

Lightweight Precast Area Drains

P-6 area drains are perfect for a variety of landscape drainage situations. The P-6 series is well suited where greater flow capacity is required. Prime examples would include subdivisions, condominium/apartment complexes, parks and golf courses. The P-6 is used in areas where larger structures have historically been used, but represents a smaller footprint and easier installation. Unlike larger drain structures, adjustment for grade changes in the future are easy with the P-6.

Where greater flow capacity is required, it is the natural choice...

FEATURES

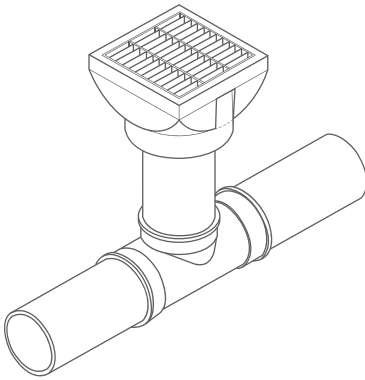
- › Lifting Notches
- › Durable and lightweight precast concrete
- › Field cut plastic pipe risers
- › Model P6 can be specified with plastic debris grate
- › Can take wheel loading
- › Allows for precise alignment with surface improvements
- › Gasketed joint offers tight connection with riser

BENEFITS

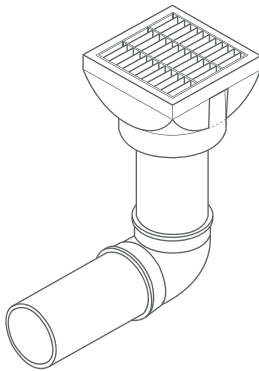
- › Allows maximum flexibility in grade adjustments
- › Eliminates the need for poured concrete base
- › Offers excellent cleanout capacity
- › Can be specified for any diameter main line pipe
- › Can use saddle tee for larger diameter pipe

**The flexibility of
plastic with the
durability of concrete.**

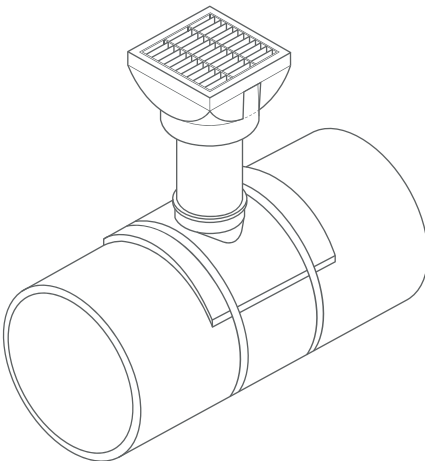
P-Series Tee installation



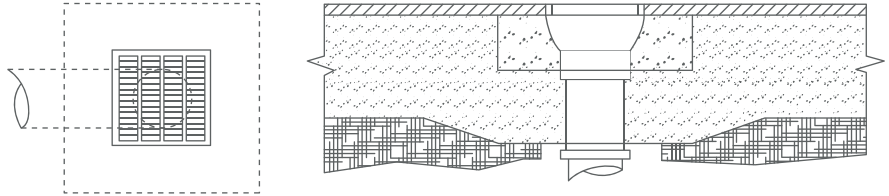
P-Series End of Line installation



P-Series Saddle Tee installation



Typical traffic area installation
with concrete collar



P-6 dimensions and specifications

Dimensions (in inches)

Full height	Setting height	Top dimension	Grate dimension	Bottom diameter
10	8	14x14	12x12	12

Open Surface area (in inches²)

Galvanized steel grate	Plastic grate	Cast iron grate
119	49.5	43

Note: P-6 can be used in 4" and 8" pipe installations by using appropriate reducer fitting.



CORCONPRECAST

1415 Fulton Road #205
PMB #455
Santa Rosa, CA 95403

www.corconprecast.com 

sales@corconprecast.com

Ph: 707-978-8150