

CONTAINER SPECIFICATIONS

Dimensions are guidelines only.



20' Dry Container

Length:	5.90 m
Width:	2.35 m
Height:	2.39 m
Door width:	2.34 m
Door height:	2.28 m
Max payload:	28.20 t
Capacity:	33 cbm
Max EUR pallets:	11



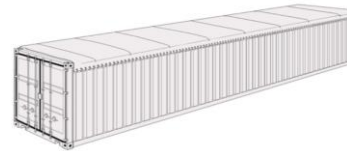
40' Dry Container

Length:	12.03 m
Width:	2.35 m
Height:	2.39 m
Door width:	2.34 m
Door height:	2.28 m
Max payload:	28.80 t
Capacity:	67 cbm
Max EUR pallets:	25



20' Open Top Container

Length:	5.90 m
Width:	2.34 m
Height:	2.35 m
Door width:	2.29 m
Door height:	2.25 m
Max payload:	28.20 t
Roof opening:	5.68 x 2.25 m
Capacity:	32 cbm



40' Open Top Container

Length:	12.03 m
Width:	2.34 m
Height:	2.35 m
Door width:	2.29 m
Door height:	2.25 m
Max payload:	26.60 t
Roof opening:	11.81 x 2.22 m
Capacity:	64 cbm



20' Flat Rack Container

Length:	5.97 m
Length (inner):	5.70 m
Width:	2.36 m
Height:	2.24 m
Max payload:	27.15 t



40' Flat Rack Container

Length:	12.06 m
Length (inner):	11.66 m
Width:	2.37 m
Height:	2.28 m
Max payload:	39.30 t

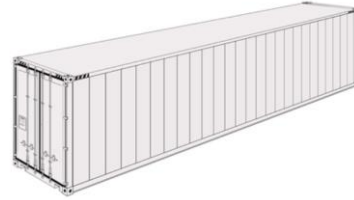
CONTAINER SPECIFICATIONS

Dimensions are guidelines only.



20' Reefer Container

Length:	5.45 m
Width:	2.29 m
Height:	2.25 m
Door width:	2.29 m
Door height:	2.24 m
Max payload:	27.49 t
Capacity:	28 cbm
Max EUR pallets:	10



40' Reefer High-cube Container

Length:	11.58 m
Width:	2.29 m
Height:	2.50 m
Door width:	2.29 m
Door height:	2.50 m
Max payload:	28.35 t
Capacity:	67 cbm
Max EUR pallets:	23



40' Dry High-cube Container

Length:	12.04 m
Width:	2.35 m
Height:	2.70 m
Door width:	2.34 m
Door height:	2.58 m
Max payload:	28.62 t
Capacity:	76 cbm
Max EUR pallets:	25



45' Dry High-cube Container

Length:	13.56 m
Width:	2.35 m
Height:	2.70 m
Door width:	2.34 m
Door height:	2.58 m
Max payload:	27.60 t
Capacity:	85 cbm
Max EUR pallets:	27