

## Soft Top Mounting System Instructions

[www.disruptiverestomods.com](http://www.disruptiverestomods.com)

Revision  
Sept 26, 2022

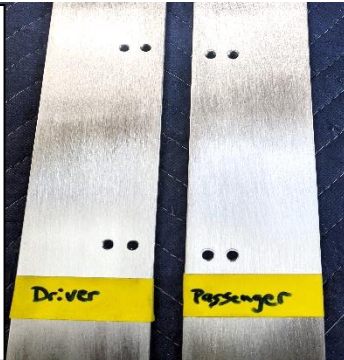


**\*\* IMPORTANT- Start** with these instructions in mounting your Rampage top. You will **not** have to drill holes into the top of your bed rails/quarterpanels **or** your tailgate.

1. Do **not** perform step 1 or step 2 of Rampage Bow Installation Instructions use these instructions **instead**.

2. Identify which provided Bedside Mount you will use for driver side and passenger side.

Note: the mounts can be used for either side. The (4) tapped holes go towards inside of Bronco.



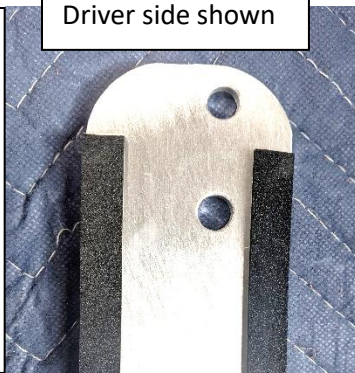
3. Install (1) ¼-28 x 1 ¼” set screw at tailgate/rearward area of the Bedside Mounts. Tighten until bottom of set screw is flush with bottom of the mount. Use blue Loctite (not included)

Passenger side shown



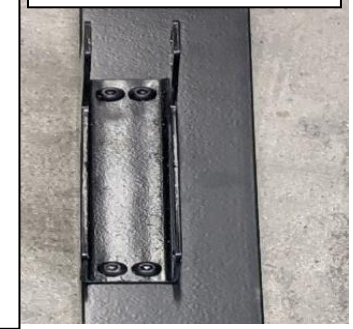
4. Apply the provided weatherstripping to the **bottom** of the Bedside Mounts along the entire length with the front section being applied as shown.

Driver side shown



5. Using the supplied hex key, bolt the Bow Mount (B2) with the **tall** section of (B2) facing towards the front of the Bronco to the top of the Bedside Mount with (4) black ¼-28 x 3/8” button head screws. Use blue Loctite (not included).

Passenger side shown



6a. Place driver side Bedside Mount on top of the driver bed side/quarterpanel of the Bronco, then place the Rampage aluminum mount (B1) on top of the Bedside mount. Align the Rampage mount to be 1 1/8” from inside edge of the body and the inside of the front hole of the Bedside mount to be 1/16” from the edge of the rear quarterpanel so the Door Frame Upright (D2) can be inserted later. Then bolt and **compress the weather stripping approximately 1/8”** of the Bedside mount & Rampage aluminum mount assembly by using (6) of the supplied 5/16-18 x 1 ¼” hex bolts, 5/16” washers & 5/16-18 flanged nuts. Use blue Loctite (not included). Check top of door interference while opening/closing door.  
6b. Place (1) ¼” black washer and ¼-28 nut onto the ¼-28 x 1 ¼” set screw from Step 3. Hold set screw while tightening nut.  
6c. Repeat on Passenger side and then **proceed** to Step 3 of the Rampage Bow Installation instructions

7. Perform Step 1 of Rampage Header Channel and Door Frame Installation instructions.

8. Do **not** perform Step 2 of Rampage Channel and Door Frame Installation instructions.

9. Perform Step 3 and close door. You will have a gap at the rear side of the door frame to the Rampage Door Frame Top (D1). Measure this gap while pressing down on Rampage Upright (D2). Then measure the gap at the windshield side of door frame and add 1/4” as the back section should be a little higher as a start. \*Example of how much to cut from the bottom rod of Door Frame Upright (D2). windshield gap is 3/8” + ¼” = 5/8”, rear gap is 1”. 1” – 5/8” = cut 3/8” off of rod.

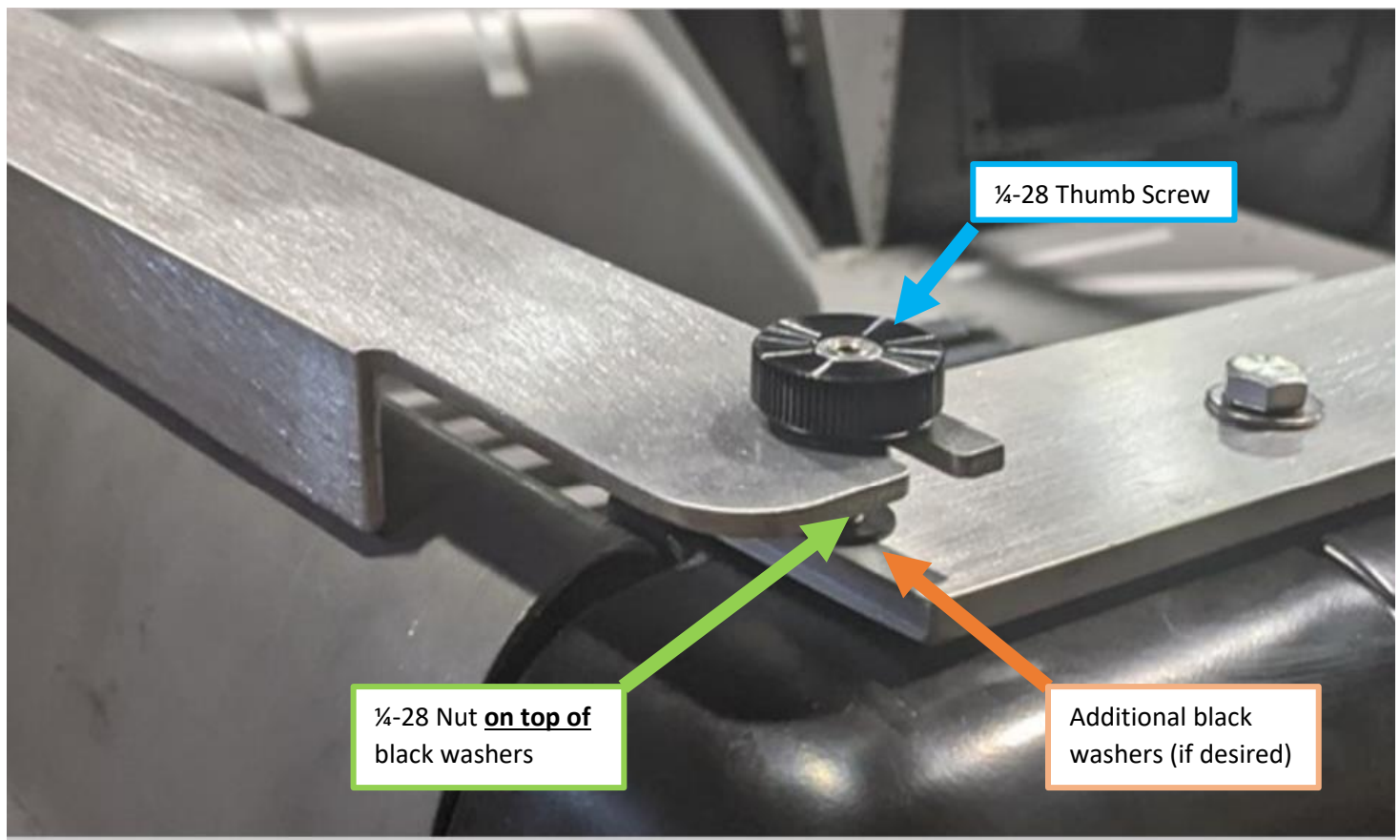
10. After top is fully installed the Door Frame Upright (D2) could be trimmed more if necessary. Then paint end of rod.

11. Perform Step 4 of Rampage Header Channel and Door Frame Installation instructions.

12. Do **not** perform Step 1 of Rampage Tailgate Channel

13. Place Tailgate Crossbrace over Bedside Mount set screws and center on tailgate tighten with the (2) ¼-28 Thumb screws.

- Note: to adjust the height of the Tailgate Crossbrace for your desired “tuck in” force of the back window channel and back edges of the top which go under the Tailgate Crossbrace additional black washers are provided.
  - The black washers can be added under the Thumb screws for testing and once you have determined your desired “tuck in” force then the ¼-28 nut can be removed and the black washers can be placed onto the set screws and secured by replacing and tightening the ¼-28 nut.



14. Proceed with the remainder of Rampage Instructions