

Kerr County Soil & Water  
Conservation District



2104 Memorial Boulevard  
Suite 103

Kerrville, Texas 78028

Tel: 830-896-4911 x 3

Fax: 830-896-3336

E-mail: [kerrcountyswcd@tx.nacdn.net](mailto:kerrcountyswcd@tx.nacdn.net)

[www.kerrcountyswcd.com](http://www.kerrcountyswcd.com)



<https://www.facebook.com/kerrcoswcd>



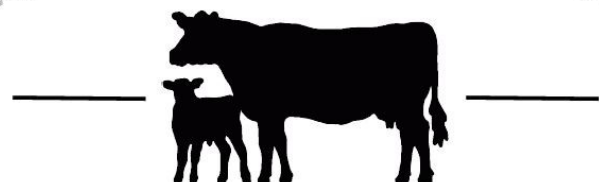
Meet Sid! I've hidden him inside this  
Newsletter. The first person to find him and  
post it on the Kerr County SWCD's  
Facebook page gets a prize!

~Missie Dreiss, Kerr County SWCD District Technician

# Save The Date!



COW POKES & LAND FOLKS



TEXAS A&M  
AGRI LIFE  
EXTENSION

**Conference**

**Friday, May 6, 2022 8:00am - 4:00pm**

**Hill Country Youth Event Center ~ 3785 Hwy. 27 Kerrville, TX 78028**

\$30.00 Early Bird Special ~ \$45.00 At The Gate

5 CEU's (Pesticide Lic.)

Please make checks payable to Kerr County SWCD and Mail to: 2104 Memorial Blvd. Ste. 103, Kerrville, TX 78028



## KERR CO. SWCD NEWS



Kerr County Soil & Water Conservation District January 2022 Volume 12, Issue 1

### 2022 Kerr County Conservation Awards

The Texas State Soil & Water Conservation Board (TSSWCB) hosts a Conservation Awards Program each year to acknowledge, recognize and honor those who dedicate themselves and their talents to the conservation and wise use of our renewable natural resources. The conservation awards program provides competition and incentives to expand and improve conservation efforts, resource development, and increase the wise utilization of our renewable natural resources. As a result, soil and water conservation districts and both rural and urban citizens of Texas are benefited. Local winners are determined by the district and may be submitted for area competition. State winners will be selected from the five area winners.

## Congratulations!!!

### Conservation Rancher

Real Wallace Ranch LP

Thomas Wallace

### Friend of Conservation

Riverside Nature Center

### Conservation Teacher

Callie Hough

Divide ISD

### Wildlife Conservationist

Crider & Crider

Mark Crider

#### District Directors:

Zone 1

Barbara Oates

Zone 2

Jack Thorn, Vice-Chairman

Zone 3

Paula Russ, Secretary

Zone 4

David Symm

Zone 5

Jack Clarke, III, Chairman

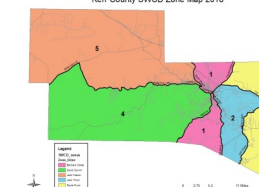
#### District Clerk

Denise Griffin

#### District Technician

Missie Dreiss

Kerr County SWCD Zone Map 2018



#### Natural Resources Conservation Service (NRCS)

##### Resource Team Leader

Cole Jacoby

##### Programs Assistant (Farm Bill)

Katy Meador

##### Soil Conservationists

Nathan Orsac

Preston Stull

##### Rangeland Specialist

Christian Hopkins

#### OFFICE HOURS:

NRCS 8:00-4:30 Mon-Fri

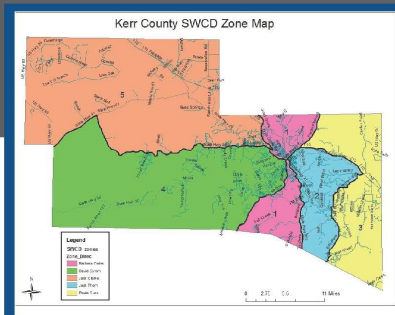
SWCD 9:00-3:00 Tues-Thurs

**Cole Jacoby, Resource Team Leader**  
2104 MEMORIAL BLVD. STE 103  
KERRVILLE, TEXAS 78028  
830.896.4911 EXT 3  
WWW.TX.NRCS.USDA.GOV

# Kerr County 2021 Report

## Conservation Implementation - A snapshot of success

Practice Name	Units	Applied Amount
Brush Management	Ac	2,959
Fence	Ft	14,913
Herbaceous Weed Treatment	Ac	191
Livestock Pipeline	Ft	4,456
Pasture and Hay Planting	Ac	191
Prescribed Grazing	Ac	31,388
Pumping Plant	No	3
Range Planting	Ac	208
Roof Runoff Structure	No	1
Water Well	No	3
Watering Facility	No	12



Through conservation planning assistance in Fiscal Year 2021, the below conservation outcomes were accomplished in Kerr County:

Conservation plans were written on **29,506** acres of agriculture land.

Conservation practices were applied on **80,898** acres of grazing land.

Conservation practices were applied on **40,411** acres of land actively managed for wildlife habitat.

Conservation practices were applied on **56,072** acres to improve overall water quality.

Conservation practices applied on **81,043** acres to improve overall environmental quality.

### Fiscal Year 2021 Farm Bill Program Investments

#### Kerr County

NRCS Program	Dollars **	Number of Contracts
Environmental Quality Incentives Program (EQIP)	\$487,055	17
Conservation Stewardship Program (CSP)	\$757,102	5

\*\* Obligated

## Spring Planting Season Is Just Around The Corner

**Kerr SWCD can take care of your seed needs! From custom grass mixes, wildlife/deer/dove mixes, tank dam mixes or specific species seed, we can order exactly what your needs call for! Call the office to discuss what you are looking for and get your seed in time for the Spring planting season! (830) 896-4911x3**

### Tips To Planting Seed

**Always plant on fresh disturbed soil**

**Establish a firm seedbed**

**Don't plant too deep**

**Develop a root system**

One of the most common mistakes when planting is not planting the seed into freshly disturbed soil. There have been several field plantings that farmers would begin planting and be rained out before finishing. Some would go back into the field and continue planting without disturbing the un-sown part of the field. The part of the field that was not disturbed after the rain would never have the stand that the freshly disturbed seedbed would have. The only exception to this is when the seed is planted with a no-till grass drill. The second problem that occurs when planting

small seed is having a firm seedbed. When most fields are plowed, air pockets are placed in the soil by the plow. During limited rainfall times, these pockets can allow the seed to germinate and then die when the roots grow into air pockets. With adequate moisture, the "raindrop splash" effect will firm the seedbed where there aren't any air pockets. Through years of planting it has been found that a seedbed can never be too firm. In fact, the firmer the seedbed, the better the stand. Some people will firm the seedbed by rolling it before planting the seed. Others will plant the seed then roll the seedbed. Both ways work in establishing a crop. We feel that rolling the seedbed before planting is more important than after and rolling before and after is best. The third problem in planting is the depth in which the seed is planted. The old timers had a saying that seven times the diameter of the seed is the maximum depth that any seed should be planted. The state of Oklahoma did a study, and found out that up to fifty percent of the wheat seed planted in Oklahoma never came up because it was planted too deep. Considering the size of wheat in comparison to grass and flower seed makes depth of planting critical to success. If a grass seeder with disk openers is used, then make sure that each disk has a depth band on it to insure proper depth placement. If the seed is broadcasted, firming the seedbed by rolling it will insure that the seed is not placed too deep. The fourth problem in planting seed is the amount of time that the stand needs to establish itself. The Government recommends one full growing season before grazing. This is a wise management practice. Perennials, unlike annuals, need to establish a root system before being grazed. Few stands, if any, have ever died during the winter of the first year if they were allowed to develop their root system. Several stands have been wiped out by grazing or haying the first season due to lack of root development.



## Kerr County SWCD Scholarship Program

*Honoring Mr. Buck Menges*

**Deadline for applications**

**Thursday, March 31st**

Do you have a graduating senior interested in pursuing a career in agriculture?

The Kerr County SWCD offers a **\$1,000 Scholarship** for students that reside in or attend/ attended school in Kerr County. Download the application from our website today!

[www.kerrcountyswcd.com](http://www.kerrcountyswcd.com)