

Kerr County Soil & Water
Conservation District



2104 Memorial Boulevard
Suite 103

Kerrville, Texas 78028

Tel: 830-896-4911 x 3

Fax: 830-896-3336

E-mail: kerrcountyswcd@tx.nacdn.net

www.kerrcountyswcd.com



<https://www.facebook.com/kerrcoswcd>



Meet Sid! I've hidden him inside this
Newsletter. The first person to find him and
post it on the Kerr County SWCD's
Facebook page gets a prize!

~Missie Dreiss, Kerr County SWCD District Technician



Native Tree Sale

Orders Due Tuesday November 1st

5 gal. \$35 ~ 15 gal. \$140 ~ 30 gal. \$310

5 gal. American Beauty Berry	5 gal. Eve's Necklace	15 and 30 gal. Montezuma Cypress
5 gal. Button Bush	5 gal. Mexican Buckeye	15 & 30 gal. Burr Oak Live Oak
5 gal. Elbow Bush	5 gal. Mexican Plum	30 gal. Live Oak
5 gal. Esperanza " Gold Star	5 gal. Texas Redbud	Download order form at:
3 gal. Pride of Barbados	5 gal. Rusty Blackhaw Viburnum	www.kerrcounty.swcd.com
5 gal. Sage, Compact Texas	5 gal. Prairie Flame Leaf Sumac	
5 gal. Sage, Green Texas	15 & 30 gal. Cedar Elm	

KERR CO. SWCD NEWS

Kerr County Soil & Water Conservation District October 2022 Volume 12, Issue 4

Fall Fish Restocking Program



The Fall Fish Restocking Program was a huge success. Thank you to the crew at Henneke Fish Hatchery and all our buyers for supporting the Kerr County SWCD's Scholarship Programs! If anyone is still interested in buying live fish give me a call. Ask me about larger fish like 1.5-2lbs Bass!

SUGGESTED STOCKING RATES

BASS: 1 acre **New Lake:** 400 Bluegill Mediums, 4000 Fathead Minnows, 1000 Golden Shiners, 100 Red Ear. Let the above forage fish spawn twice before adding 100 Medium bass.

BASS: 1 acre **Old Lake:** 600 Bluegill Medium, 6000 Fathead Minnows, 3000 Golden Shiner Minnows, 100 Medium Red Ear

CATFISH: 1 acre **lake Fed-** 1000 (4"-6") catfish, 1000 Perch, 10,000 Fathead Minnows, 100 Medium Red Ear

CATFISH: 1 acre **Non- Fed-** 300 Catfish, 300 Perch, 6000 Fathead Minnows, 100 Medium Red Ear



District Directors:

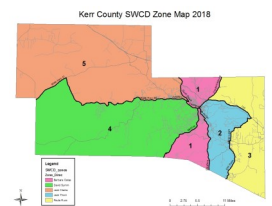
- Zone 1
Barbara Oates
- Zone 2
Jack Thorn, Vice-Chairman
- Zone 3
Paula Russ, Secretary
- Zone 4
David Symm
- Zone 5
Jack Clarke, III, Chairman

District Clerk

Denise Griffin

District Technician

Missie Dreiss



Natural Resources Conservation Service (NRCS)

Resource Team Leader

Cole Jacoby

Programs Assistant (Farm Bill)

Katy Meador

Soil Conservationists

Nathan Orsac

Preston Stull

Rangeland Specialist

Christian Hopkins

OFFICE HOURS:

NRCS 8:00-4:30 Mon-Fri

SWCD 9:00-3:00 Tues-Thurs

(830) 896-4911x3



Plant ID Pasture Walk

WHAT IS THE NAME OF THAT PLANT?

IS IT GOOD FOR ANYTHING?

HOW DO I MANAGE IT?



When:
October 20, 2022
9:00 am—1:30 pm

Where:
La Quinta Real Ranch

Cost:
\$35
Lunch Included

RSVP by October 17th to 830-896-4911x3 or missie.dreiss@tx.nacdn.net

Directions:

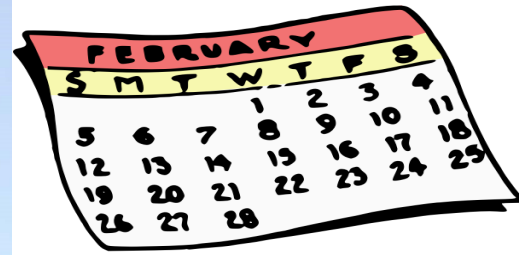
At the intersection of 173 and the loop, continue on 173 towards Bandera. After passing Comanche Trace about 3 miles take a right at FM 2771 (Lower Turtle Creek) and go another 3 miles until you begin to descend the hill. There are 2 large oaks across from a set of mailboxes. Iron gate will be open and have 667 on it. Come down the road 7/10 of a mile and park by the barn.

We will have the opportunity to identify and discuss management of 100's of native plants both important to wildlife and grazing with local experts in a small group setting. We will see plants like Sideoats, KR, Silver and Little Bluestem, Buffalograss, Tall Dropseed, Texas Wintergrass, Vine Mesquite, Texas Cupgrass, Orange Zexmenia, Wild Patunia, Antelope Horn Milkweed, Curly Mesquite and many other rare and important species. Space is limited RSVP today!

This event will be in a pasture setting and may include limited physical exertion. You agree that any risks taken are your own decision with no liability to landowners or Pasture Walk partners and personnel.



USDA is an equal opportunity provider, employer, and lender.



Be on the lookout for our **2023 Calendars!** If you haven't already placed your ad you still have time! A \$120 Donation will get you a business card size ad. Email me today!!!

We Sell Seed!

It's time to plant Wild Flower Seeds. **Texas Native Wildflower Mix (FALL) & Starburst Wildflower Mix (FALL) are available for \$25 Per Pound—** Prices are subject to change due to availability.

NRCS Announces Conservation Assistance Funding for FY2023

NRCS accepts applications for these programs year-round, producers and landowners should apply by the state-specific application "due by" dates to be considered for fiscal year's funding.

Texas Application Cutoff Dates

EQIP: Nov. 4, 2022

EQIP-CIC: Nov. 4, 2022

RCPP: Nov. 4, 2022

CSP: Feb. 24, 2023

Temple, Texas, Oct. 4, 2022 — The USDA-Natural Resources Conservation Service (NRCS) in Texas announced Fiscal Year 2023 financial assistance opportunities for agricultural producers and landowners for the Conservation Stewardship Program (CSP), Environmental Quality Incentives Program (EQIP), Environmental Quality Incentives Program - Conservation Incentives Program (EQIP-CIC) and Regional Conservation Partnership Program (RCPP). While

Report Noninsured Crop Disaster Assistance Program (NAP) Losses

NAP provides financial assistance to you for crops that aren't eligible for crop insurance to protect against lower yields or crops unable to be planted due to natural disasters including freeze, hail, excessive moisture, excessive wind or hurricanes, flood, excessive heat and qualifying drought (includes native grass for grazing), among others.

To receive payment, you had to purchase NAP coverage for 2022 crops and file a notice of loss the earlier of 15 days of the occurrence of the disaster or when losses become apparent or 15 days of the final harvest date.

For hand-harvested crops and certain perishable crops, you must notify FSA within 72 hours of when a loss becomes apparent.

Eligible crops must be commercially produced agricultural commodities for which crop insurance is not available, including perennial grass forage and grazing crops, fruits, vegetables, mushrooms, floriculture, ornamental nursery, aquaculture, turf grass, ginseng, honey, syrup, bioenergy, and industrial crops. Deadline to apply for 2023 NAP is December 1, 2022 and deadline for acres reported is December 15, 2022.

Submitting Production Losses for Disaster Declarations

Farmers and ranchers know all too well that natural disasters can be a common, and likely a costly, variable to their operation. The Farm Service Agency (FSA) has emergency assistance programs to provide assistance when disasters strike, and for some of those programs, a disaster designation may be the eligibility trigger. When natural disaster occurs, there is a process for requesting a USDA Secretarial disaster designation for a county. You can play a vital role in this process.

If you have experienced a production loss as a result of a natural disaster, you may submit a request to your local FSA county office for your county to be evaluated for a Secretarial disaster designation. Once a request is received, the county office will collect disaster data and create a Loss Assessment Report. The County Emergency Board will review the Loss Assessment Report and determine if a recommendation is sent forward to the U.S. Secretary of Agriculture for the designation.

Disaster Assistance for 2022 Livestock Forage Losses

Producers in Kerr County are eligible to apply for 2022 Livestock Forage Disaster Program (LFP) benefits on small grain, native pasture, improved pasture, annual ryegrass.

LFP provides compensation if you suffer grazing losses for covered livestock due to drought on privately owned or cash leased land or fire on federally managed land.

County committees can only accept LFP applications after notification is received by the National Office of qualifying drought or if a federal agency prohibits producers from grazing normal permitted livestock on federally managed lands due to qualifying fire.

You must complete a CCC-853 and the required supporting documentation no later than January 30, 2023 for 2022 losses.

For more information, contact Tamara Hayes at the Kerr County USDA Service Center at (830) 896-4199x103 or visit fsa.usda.gov/nap.