

Kerr County Soil & Water Conservation District

2104 Memorial Boulevard
Suite 103

Kerrville, Texas 78028

Tel: 830-896-4911 x 3

Fax: 830-896-3336

E-mail: kerrcountyswcd@tx.nacdn.org

www.kerrcountyswcd.com



<https://www.facebook.com/kerrcoswcd>



Meet Sid! I've hidden him inside this Newsletter. The first person to find him and post it on the Kerr County SWCD's Facebook page gets a prize!

~Missie Dreiss, Kerr County SWCD District Technician



CONGRATULATIONS TO OUR 2024 SCHOLARSHIP RECIPIENT

HADLEY REEVES OF INGRAM TOM MOORE HIGH SCHOOL!



"My plan is to attend Texas A&M University and pursue a degree in Poultry Science. I would like to obtain my doctorate in Poultry Science as well. During my studies, I plan to conduct under graduate research on poultry nutrition. With this research, I would like to educate developing and impoverished countries about raising poultry as a major source of protein. The Poultry industry provides multiple people across the world with a nutritious source of protein. In

terms of poultry, both meat and eggs are considered a valuable source of nutrients to people who otherwise would not be able to afford red meat like beef. I hope to grow the knowledge I already possess and share vital information with those in need.", explains Hadley Reeves. We have no doubt that Hadley will make a huge impact in the world through Ag Education!



KERR CO. SWCD NEWS

Kerr County Soil & Water Conservation District

July 2024

Volume 14, Issue 3

Pollinators Need Native Grasses Too!

The role grasses play in the pollinator life cycle is often overlooked



Incorporating grasses into pollinator-friendly initiatives and habitat restoration efforts can have a positive impact on the abundance and diversity of pollinators in our ecosystems. (USDA NRCS)

WASHINGTON — National Pollinator week is June 17-23 and while blooming plants are important to pollinators like bees, bats, butterflies, beetles, hummingbirds, and more, grasses play a foundational role in the pollinator lifecycle and in USDA-NRCS conservation practices. Grasses provide soil stability, protect waterways, create shelter and food for wildlife, and are an indicator of ecosystem health. Specific ways in which grasses help pollinators include:

Habitat and Shelter

Grasses provide essential [habitat and shelter](#) for pollinators. Their dense foliage and upright growth form create microhabitats where insects are protected from adverse weather conditions, predators, or disturbances. The clumps or bunches of grasses also offer nesting sites for ground-nesting bees and other insects.

Connectivity and Corridors

Warm-season grasses can create pollinator corridors and add connectivity between habitats. These [grasses are often planted](#) in large swaths or prairie restorations, forming a network of suitable foraging areas for pollinators. This interconnectedness helps pollinators find suitable resources, enhancing their foraging efficiency and genetic exchange.

Incorporating grasses into pollinator-friendly initiatives and habitat restoration efforts can have a positive impact on the abundance and diversity of pollinators in our ecosystems. NRCS partners and cooperators have [resources available](#) to get started on your own pollinator initiatives!

For additional information on specific species of plants mentioned in the document links, please see the [USDA PLANTS database](#). Technical information and guidance on the use of conservation plants for pollinator habitat can be found on the [Plant Materials Program website](#) by searching for "pollinator" in [technical documents](#) or [contact the nearest Plant Materials Center or plant materials specialist](#).

— USDA Natural Resources Conservation Service

District Directors:

Zone 1

Barbara Oates

Zone 2

Jack Thorn, Vice-Chairman

Zone 3

Paula Russ, Secretary

Zone 4

David Symm

Zone 5

Jack Clarke, III, Chairman

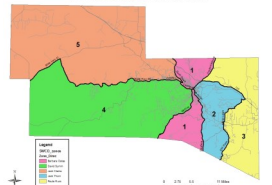
District Clerk

Denise Griffin

District Technician

Missie Dreiss

Kerr County SWCD Zone Map 2018



Natural Resources Conservation Service (NRCS)

Resource Team Leader

Cole Jacoby

District Conservationists

Nathan Orsak

Rangeland Specialist

Christian Hopkins

Programs Assistant (Farm Bill)

Katy Meador

OFFICE HOURS:

NRCS 8:00-4:30 Mon-Fri

SWCD 9:00-3:00 Tues-Thurs

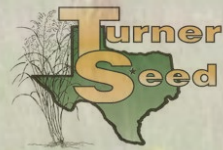
(830) 896-4911x3

CUSTOM SEED SALES

GIVE US A CALL AND WE CAN ASSIST YOU WITH A CUSTOM ORDER FOR YARD PLANTING, RANGE SEEDING, PASTURE PLANTING, FOOD PLOTS AND EROSION CONTROL.

KERR COUNTY BLEND \$50 / ACRE (5LBS. BAG)

BERMUDAGRASS \$60 / 5LBS BAG



Blue Catfish - Also known as HUMPBACK BLUES OR HIGH FIN BLUES by different folks in different locales. Henneke's has the improved blue cats. They get bigger and faster. Wonderful upper level water game fish and very tasty on your plate.

FALL FISH SALE

OCTOBER 24, 2024

RESTOCK YOUR PONDS AND TANKS DURING THE KERR COUNTY SWCD FALL FISH RESTOCKING PROGRAM. THIS ANNUAL FUNDRAISER HELPS THE

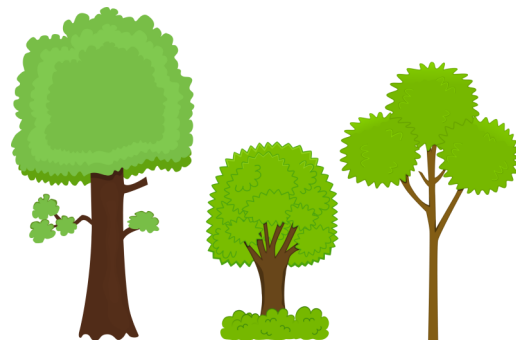
DISTRICT RAISE MONEY FOR OUR SCHOLARSHIP FUND. PHOTO GALLERY WITH IMAGES AND DESCRIPTIONS CAN BE FOUND AT WWW.KERRCOUNTYSWCD.COM

FALL NATIVE TREE SALE

PRE-ORDER BY NOVEMBER 18TH

PICK UP ON NOVEMBER 21, 9-3PM

ORDER FORMS WWW.KERRCOUNTYSWCD.COM



Texas Section Society for Range Management

YOUTH RANGE WORKSHOP

Stewardship

Leadership

Management



George Holekamp Belt Buckle Awarded at the Annual Youth Range Workshop

"TSSRM Youth Range Workshop 2024 was a huge success! High School aged youth from across the state came together for a week in Junction, Texas for the **70th Annual Youth Range Workshop**. Activities and presentations included plant identification, collecting, and pressing, soil health, principles of ecology, grazing and wildlife management, prescribed burning, brush management, range planting and many more. The campers visited and learned from local ranchers, toured the Kerr Wildlife Management Area, and swam in the headwaters of Johnson Creek. This was all made possible by their amazing donors and sponsors, an excellent group of students and our hard working and outstanding adult directors and speakers.

Kerr SWCD participated in the Youth Range Workshop's field day at the Kerr Wildlife Management Area. The SWCD served the campers and staff lunch. After lunch, the Kerr SWCD hosts a public speaking contest and awards one camper with the George Holekamp Belt Buckle Award. Marichel Hernandez of Eagle Pass won this year's contest, for demonstrating outstanding public speaking skills and knowledge on his chosen ecological topic. The Youth Range Workshop incorporates this contest and Belt Buckle Award into their program each year.

