

Kerr County Soil & Water
Conservation District

2104 Memorial Boulevard
Suite 103

Kerrville, Texas 78028

Tel: 830-896-4911 x 3

Fax: 830-896-3336

E-mail: kerrcountyswcd@tx.nacdn.net

www.kerrcountyswcd.com



<https://www.facebook.com/kerrcoswcd>

Meet Sid! I've hidden him inside this Newsletter. The first person to find him and post it on the Kerr County SWCD's Facebook page gets a prize!

-Missie Dreiss, Kerr County SWCD District Technician



United States Department of Agriculture

DISASTER ASSISTANCE

Farm Service Agency

LFP

Livestock Forage Disaster Program

FACT SHEET

July 2019



Overview

The Livestock Forage Disaster Program (LFP) provides payments to eligible livestock owners and contract growers who have covered livestock and who are also producers of grazed forage crop acreage (native and improved pasture land with permanent vegetative cover or certain crops planted specifically for grazing) that have suffered grazing losses due to a qualifying drought during the normal grazing period for the county. LFP also provides payments to eligible livestock owners or contract growers that have covered livestock and who are also producers of grazed forage crop acreage on rangeland managed by a federal agency if the eligible livestock producer is prohibited by the federal agency from grazing the normal permitted livestock on the managed rangeland due to a qualifying fire. The qualifying drought and qualifying grazing losses, and/or notification of prohibition to graze Federal land due to fire, must have occurred in the grazing period and crop year. LFP is administered by the Farm Service Agency (FSA) of the U.S. Department of Agriculture (USDA). For more information on this program contact Tamara Hayes at the Kerrville FSA office (830) 896-4911x103 or

LIVESTOCK PAYMENT RATES

KIND	TYPE	WEIGHT RANGE	PAYMENT RATE PER HEAD	
			2018	2019
Beef	Adult	Bulls, Cows	\$28.07	\$29.34
	Non-Adult	500 pounds or more	\$21.05	\$22.01
	Non-Adult	Less than 500 pounds	\$14.67	\$14.67
Dairy	Adult	Bulls, Cows	\$72.98	\$76.29
	Non-Adult	500 pounds or more	\$21.05	\$22.01
	Non-Adult	Less than 500 pounds	\$14.67	\$14.67
Beefalo	Adult	Bulls, Cows	\$28.07	\$29.34
	Non-Adult	500 pounds or more	\$21.05	\$22.01
	Non-Adult	Less than 500 pounds	\$14.67	\$14.67
Buffalo/Bison	Adult	Bulls, Cows	\$28.07	\$29.34
	Non-Adult	500 pounds or more	\$21.05	\$22.01
	Non-Adult	Less than 500 pounds	\$14.67	\$14.67
Sheep	All		\$7.02	\$7.34
Goats	All		\$7.02	\$7.34
Deer	All		\$7.02	\$7.34
Equine	All		\$20.77	\$21.71
Elk	All	Less than 400 pounds	\$6.18	
		400 to 799 pounds	\$11.51	
		800 pounds or more	\$15.16	
Reindeer	All		\$6.18	\$6.46
Alpacas	All		\$23.12	\$24.17
Emus	All		\$14.37	\$15.02
Llamas	All		\$10.25	\$10.71

KERR CO. SWCD NEWS

Kerr County Soil & Water Conservation District January 2020 Volume 10, Issue 1



Caddo Sugar Maple Tree

Acer Saccharum "Caddo"

Natives of Texas Nursery, Dr. David Winingham

Sugar Maples often have significant problems growing well in our Southwest weather. The hot, often dry summers and windy conditions can shorten the life of these trees. High pH soils, such as those found in the Texas Hill Country, frequently cause Iron Chlorosis in maple trees. However, some Sugar Maples are better adapted to Texas conditions than others.

Kansas State University's John C. Pair Horticulture Center has evaluated Sugar Maples for more than 20 years and has identified selections that are much better adapted to Southwest conditions. Of particular interest are the Caddo Sugar Maples, which originated from an isolated population in Caddo County, Oklahoma. These are true Sugar Maples and are considered an ecotype. Caddo Sugar Maples are more resistant to leaf scorch and tatter than the normal Sugar Maples.

Data from the research center shows just how impressive the resistance to scorch is in the Caddo Sugar Maples. The last three weeks of August in 2003 saw temperatures at the research station reach over 100 degrees each day with no rain for the month prior. All other sugar maples in the trial had severely scorched leaves. Not a single leaf of any of the Caddo Maples was scorched. Leaf water potential readings taken pre-dawn showed all other trees in the trial past the wilting point while the Caddo Maples were barely stressed.

Another interesting characteristic of Caddo Maples are that they tend to retain their leaves in the Winter and therefore have been suggested as screens or for use in windbreaks.

We have had a lot of inquiries over the years about sugar maples. We have told customers we try to focus on natives or well adapted plants to this area of Texas. As the discussion above points out, Northern US and Asian varieties have significant problems in our soil and climate.

We have teamed up with a grower in Southwestern Oklahoma to provide a Caddo Maple suitable for here in the Hill Country. We should have some 5 or 30 gallon ones ready for sale next Fall.



The shape of the Caddo Maple leaf is distinctively different than our local Big Tooth Maple.



Caddo Color— This tree is located in the Red Rock canyon area where they are native in Caddo County Oklahoma.

District Directors:

Zone 1

Barbara Oates, Secretary

Zone 2

Jack Thorn, Vice-Chairman

Zone 3

Paula Russ

Zone 4

David Symm

Zone 5

Jack Clarke, III, Chairman

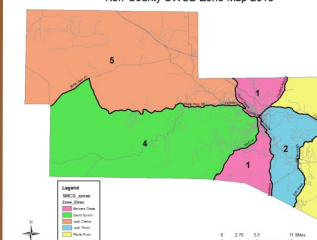
District Clerk

Denise Griffin

District Technician

Missie Dreiss

Kerr County SWCD Zone Map 2018



Natural Resources

Conservation Service (NRCS)

Resource Team Leader

Cole Jacoby

Programs Assistant (Farm Bill)

Katie Meador

Soil Conservationist

Richard Atkinson

OFFICE HOURS:

NRCS 8:00-4:30 Mon-Fri

SWCD 9:00-5:00 Tues-Thurs

(830) 896-4911x5

Recognizing
 Kerr County
 SWCD #217
 75 Years
 Of
 Public Service
 To Farmers and Ranchers
 Assisting Them To Address
 Their
 Soil and Water
 Conservation Needs
 1944-2019



AG LAW in the Field with TIFFANY LASHMET

Check out this award-winning podcast!

Hear interviews with agricultural attorneys on a variety of topics from water law to immigration, estate planning to business entities, and everything in between.

All episodes are available for free on iTunes, your phone's podcast app, or on your computer.

Their most recent episode features Shannon Ferrell's lesson on what the Corb Lund song "S Lazy H" can teach us about farm and ranch transition planning. Shannon used the song as inspiration for a research project looking at the likelihood of a farm surviving when left in equal shares to on-farm and off-farm heirs. The results

were surprising and important.

www.aglaw.libsyn.com

Do You Have A Graduating Senior
 Interested In Pursuing A Career
 In Agriculture?

The Kerr County SWCD offers a **\$1,000 Scholarship** for students that reside in or go to school in Kerr County. *Applications are due March 16, 2020.* Download the application from our website today!

www.kerrcountyswcd.com



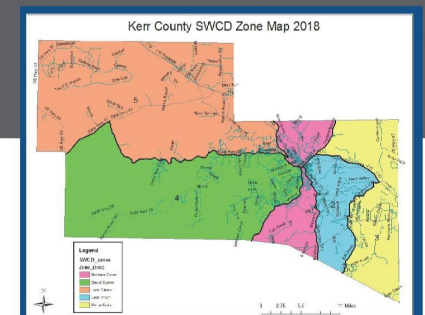
Natural Resources Conservation Service • Texas

Helping People Help the Land

Cole Jacoby, Resource Team Leader
 2104 MEMORIAL BLVD. STE 103
 KERRVILLE, TEXAS 78028
 830.896.4911
 WWW.TX.NRCS.USDA.GOV



Kerr County 2019 Report



Conservation Implementation - A snapshot of success

Practice Name	Units	Applied Amount
Brush Management	ac	2,138
Diversion	ft	6,534
Fence	ft	3,224
Livestock Pipeline	ft	5,752
Prescribed Grazing	ac	32,078
Pumping Plant	no	2
Range Planting	ac	71
Roof Runoff Structure	no	5
Watering Facility	no	9
Water Well	no	2
Upland Wildlife Habitat Management	ac	980

Through conservation planning assistance in Fiscal Year 2019, the below conservation outcomes were accomplished in Kerr County:

Conservation plans were written on **37,556** acres of agriculture land.

Conservation practices applied on **980** acres of agriculture land to enhance wildlife habitat.

Conservation practices were applied on **55,008** acres of grazing land.

Conservation practices were applied on **53,293** acres to improve overall water quality.

Conservation practices applied on **55,097** acres to improve overall environmental quality.

Fiscal Year 2019 Farm Bill Program Investments*

Kerr County		
NRCS Program	Dollars	Number of Contracts
Environmental Quality Incentives Program (EQIP)	\$ 1,153,922	34

*Obligated



USDA Natural Resources Conservation Service | 2104 Memorial Blvd. Kerrville, Texas 78028 | 830.896.4911 | www.tx.nrcs.usda.gov

USDA is an equal opportunity provider, employer, and lender.