

# Introducing QbCheck

## **QbCheck is an online ADHD test that supports early identification, assessment and treatment of ADHD.**

It is a computer-based test that objectively measures the core signs of ADHD: hyperactivity, impulsivity and inattention.

During the test, a number of symbols will appear on your computer screen. Your task is to push the spacebar when a certain symbol appears.

Meanwhile, a webcam uses facial recognition technology to track your movements during the test.

After test completion, your test result is compared with individuals of the same age and gender, who have ADHD and those who do not.

Together with other clinically relevant information, the comparison to the age and gender matched groups will inform your provider about the presence of ADHD symptoms and/or your response to ADHD treatment.



**FDA**  
Cleared

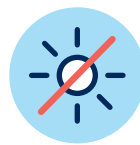
# Preparing for QbCheck

To support a successful test experience, please ensure the following before starting your QbCheck test:



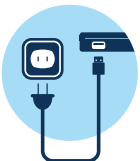
## Access to a laptop, computer or MacBook with a built-in webcam

QbCheck does not work on Smartphones, iPads, Chromebooks or Surfaces.



## Avoid direct sunlight and bright lighting

Try to position the webcam without having windows, mirrors or other objects that produce bright light behind you.



## Plug your device into a power outlet

Avoid running the test in battery mode and make sure that your power settings are set to 'High Performance'.



## Use a stool for children (<12) and otherwise a chair with a backrest but without armrests or wheels

If you do not have access to a stool or this type of chair, make sure that your seating is sturdy and to avoid sofas or chairs that can swivel, move or recline.



## Ensure internet connection and use one of the approved browsers

Please only use Chrome, Edge for Windows 10 or Firefox.



## Close all other browsers and programs

This to optimise the performance of your device.



## Make sure your face is fully visible and uncovered

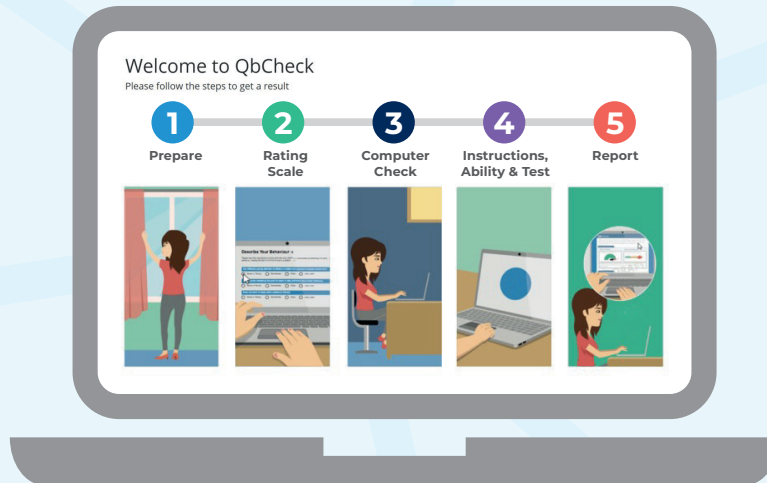
Headwear (hats, caps, scarfs etc.) and facial decorations (rings, piercings etc.) may cause issues. Glasses, however, can be worn.



## Find a quiet space

Do your best to give your full attention to the task and ensure your surroundings are calm and quiet, and turn your personal devices off.

# Starting QbCheck



To start the test please access [www.qbcheck.com](http://www.qbcheck.com) and select the red button “Start Test”. You will then be asked to enter your voucher code (case sensitive) and conduct a performance test, followed by a general overview outlining the following steps:

- 1 Prepare:** consists of 12 simple instructions to get ready for the test.
- 2 Rating Scale:** prompting you to rate your behaviour.
- 3 Computer Check:** checking your test conditions and environment (e.g., seating position, lighting).
- 4 Instructions:** explaining the computer task in detail.  
**Ability Test:** asking you to conduct a 1 minute ability test.  
**Real Test:** asking you to conduct the full 15 or 20 minute test.
- 5 Report:** uploading of your results.

**The test will automatically stop after 15 or 20 minutes. You cannot pause the test and please avoid aborting the test: the results will not be valid and your provider may ask you to repeat the test.**

**Your results will not be made available to you upon test completion but during a subsequent appointment.**

**Questions? Please refer to the FAQs or contact your provider.**

# Frequently Asked Questions

---

## Will I be recorded during the test?

The webcam does not record images but only tracks movements. It might also be worth noting that your test results are anonymised and processed according to local data protection regulations.

---

## I feel like I did not perform well during my test – should I be concerned?

The test is designed to be challenging to assess your ability to sustain attention, impulse control and level of activity. You should not be concerned if you feel you did not perform well – there is no such thing as “pass or fail” for this type of tests and the test is not dependent on language, reading or mathematical skills.

---

## I could not complete my test due to an interruption or technical issue – what should I do?

When interrupted, you can restart the test at a (more) appropriate time and when further interruption can be avoided. If you experience a technical issue that prevents you from performing the test, please contact your provider, so they can assist you accordingly.

---

## How long does the test take?

The test itself takes 15 or 20 minutes but additional time should be allowed for the setup, rating scale completion as well as ability test.

---

## How will my provider use the results?

QbCheck results are used to aid in the assessment and treatment of ADHD. We encourage you to speak with your provider to learn more.

---

## Is QbCheck validated?

QbCheck is well documented, widely used, CE-marked, and registered or cleared by all concerned authorities, including The European Medicines Agency (EMA) and The Food and Drug Administration (FDA).

---