

NINA AND ALEXANDER

HAVE THE GREAT PLEASURE
OF ANNOUNCING THEIR WEDDING AND CORDIALLY INVITE YOU

TO THE

CHURCH CEREMONY

ON SATURDAY, JUNE 21, 2025, AT 11:00 A.M.
AT THE LUTHERISCHE STADTKIRCHE
DOROTHEERGASSE 18, 1010 VIENNA

FOLLOWING THE CEREMONY, YOU ARE INVITED
TO JOIN US FOR AN AGAPE RECEPTION
AT THE SCHWIND FOYER OF THE VIENNA STATE OPERA.
OPERNRING 2, 1010 VIENNA

DRESS CODE: CUTAWAY, DARK SUIT, TRADITIONAL ATTIRE, OR DRESS

R.S.V.P. by May 21, 2025, to weddingstremitzer@gmail.com or +41 79 8859118

NINA AND ALEXANDER

REQUEST THE PLEASURE
OF YOUR COMPANY AT THEIR

WEDDING SOIRÉE

ON SATURDAY, JUNE 21, 2025, AT 7:00 P.M.
AT PALAIS PALLAVICINI.
JOSEFSPLATZ 5, 1010 VIENNA

DRESS CODE: BLACK TIE, EVENING GOWN

R.S.V.P. by May 21, 2025 to: weddingstremitzer@gmail.com or +41 79 885 9118.

INFORMATION

NINA AND ALEXANDER

21. JUNI 2025

Information in English and updates can be found on:
www.weddingstremitzer.com



WEDDING REGISTRY GIFTS

Your presence at our celebration
is the greatest gift of all.
Should you wish to honor us further
with a wedding present,
we would gratefully welcome a contribution
toward furnishing our shared home.

N26: DE55 1001 1001 2626 6809 33
BIC: NTSBDEB1XXX

UBS: CH26 0023 0230 6818 4140 Q
BIC: UBSWCHZH80A

ZELLE: astremit@gmail.com

LOCATIONS

All venues are located in the heart of Vienna,
only a few steps away from the Vienna State Opera.

CHURCH CEREMONY: LUTHERISCHE STADTKIRCHE
<https://stadtkirche.at/>

AGAPE RECEPTIONS: VIENNA STATE OPERA
<https://www.wiener-staatsoper.at/en/architecture/from-the-inside/>

WEDDING SOIRÉE: PALAIS PALLAVICINI
<http://www.palais-pallavicini.at/en/>

DIRECTIONS/PARKING

BY CAR

Opera Garage
Garage Neuer Markt
Garage Palais Corso

BY TAXI

All of the venues are directly accessible by taxi.

BY PUBLIC TRANSPORT (SUBWAY)

U1, U3: Stephansplatz
U1, U2, U4: Karlsplatz

BY PLANE

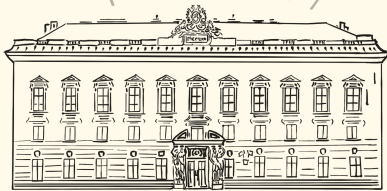
Vienna International Airport is about a 30-minute taxi
ride from the city center.
Austrian Airlines operates numerous direct flights to Vienna.

HOTELS

On all major booking websites, you will find countless hotels
and guesthouses in every price range within walking distance.

Examples of well-known nearby hotels include:

HOTEL SACHER
LE MERIDIEN
HOTEL AMBASSADOR
HOTEL WANDL



Palais Pallavicini



Lutherische
Stadtkirche

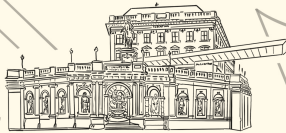


Josefsplatz

Augustinerstraße

Dorotheergasse

Albertina

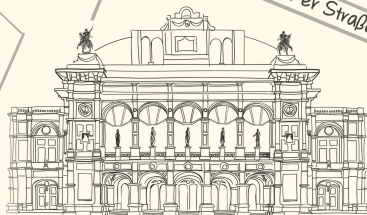


Burggarten

Philharmoniker Straße

NINA & ALEXANDER

21. JUNI 2025



Wiener Staatsoper

Operngasse