

## Syght for Health Care

Remote monitoring has a multitude of uses within a Health Care environment, including:

- Cold Storage
- Legionella Pipe Monitoring
- Leak Detection
- Air Quality



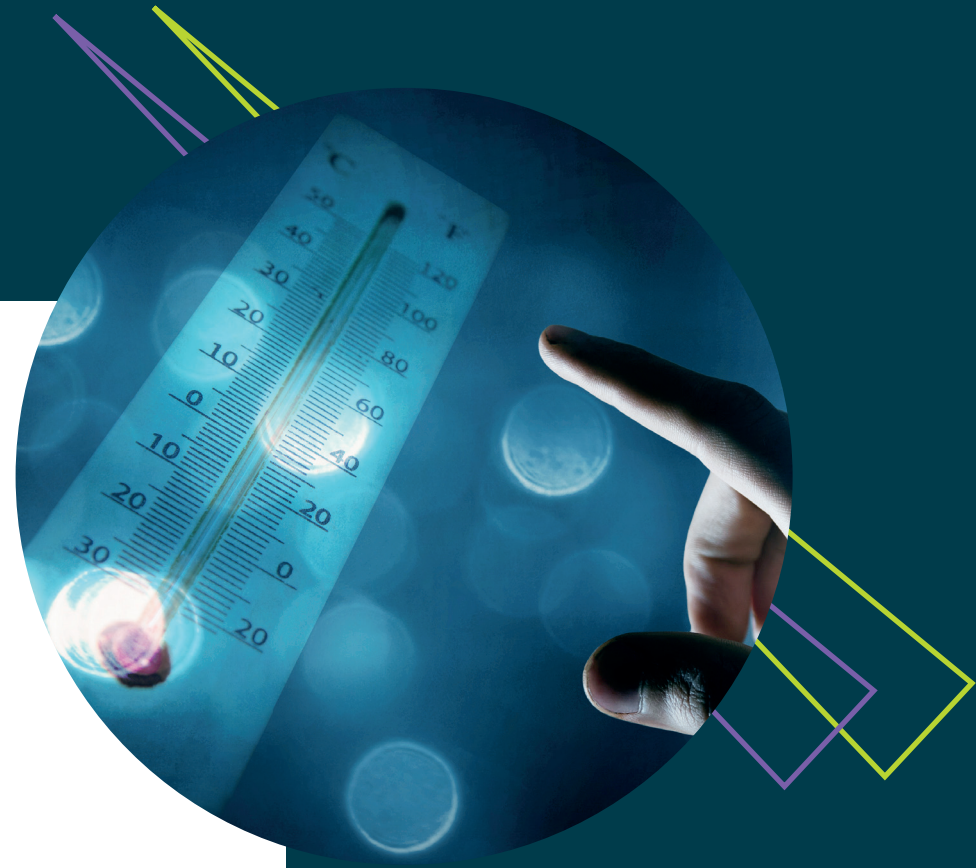


**IoT Sensor Solutions**  
To drive efficiency and savings

## Cold Storage

Our sensors address the compliance requirements around temperature monitoring of medication fridges, food fridges and freezers.

Our cold storage sensors constantly monitor temperatures inside fridges, freezers and walk-in chillers, sending data to the platform every 5 minutes.

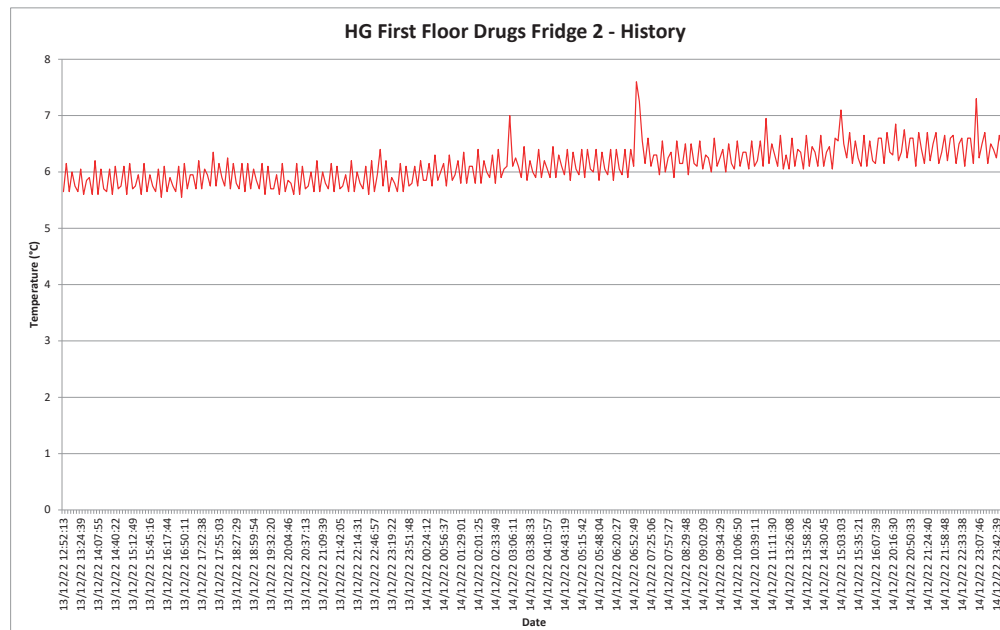


## Cold Storage

Cold storage sensors eliminate the need for staff to repeatedly check and manually record cold storage temperatures, saving many hours of staff time. When premises get audited by CQC, an EHO or any inspecting body, simply refer to the data from the platform instead of producing paper copies of manual temperature checks.



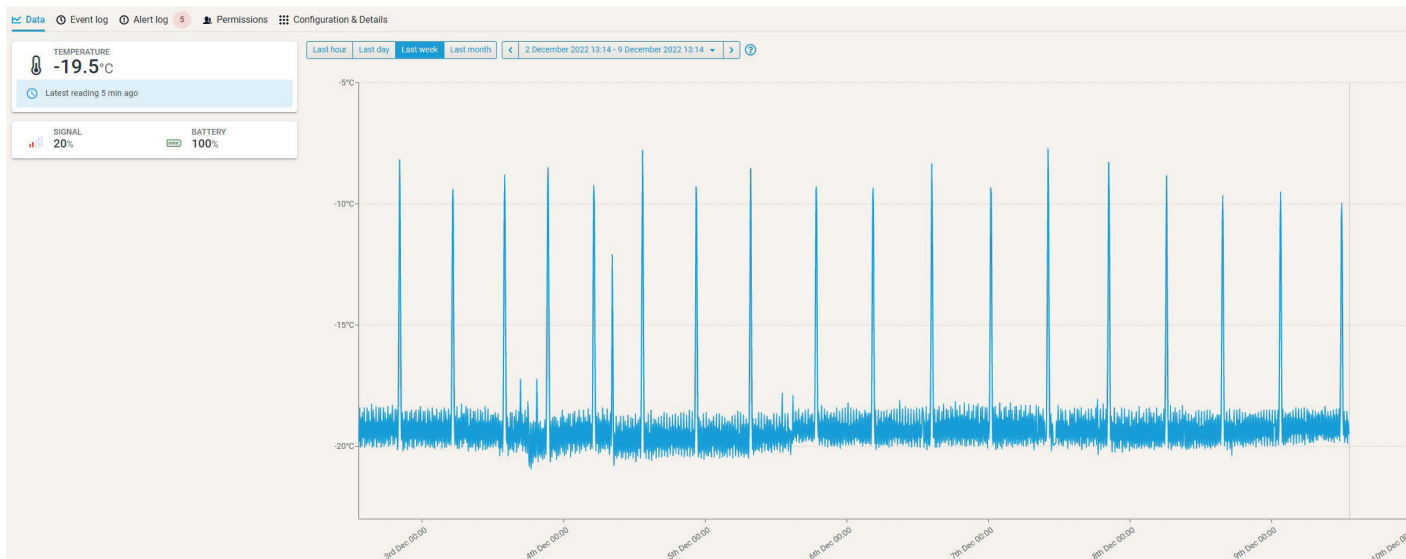
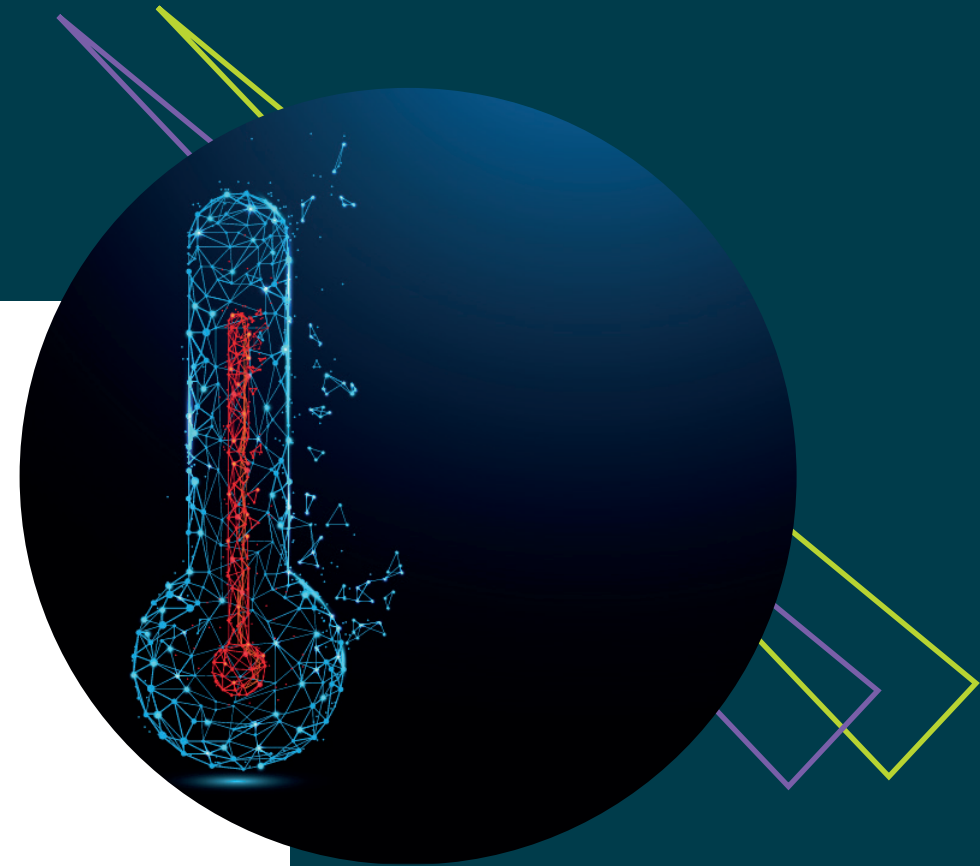
| Date                | Temperature (°C) |
|---------------------|------------------|
| 2022-12-13 12:52:13 | 5.65             |
| 2022-12-13 12:57:37 | 6.15             |
| 2022-12-13 13:03:01 | 5.65             |
| 2022-12-13 13:08:29 | 6                |
| 2022-12-13 13:13:50 | 5.75             |
| 2022-12-13 13:19:14 | 5.65             |
| 2022-12-13 13:24:39 | 6.05             |
| 2022-12-13 13:30:04 | 5.6              |
| 2022-12-13 13:46:20 | 5.85             |
| 2022-12-13 13:51:42 | 5.9              |
| 2022-12-13 13:57:08 | 5.6              |
| 2022-12-13 14:02:30 | 6.2              |
| 2022-12-13 14:07:55 | 5.6              |
| 2022-12-13 14:13:19 | 6.05             |
| 2022-12-13 14:18:44 | 5.7              |
| 2022-12-13 14:24:08 | 5.65             |
| 2022-12-13 14:29:33 | 6.05             |
| 2022-12-13 14:34:58 | 5.6              |
| 2022-12-13 14:40:22 | 6.1              |
| 2022-12-13 14:45:47 | 5.7              |
| 2022-12-13 14:51:11 | 5.75             |
| 2022-12-13 14:56:36 | 6.1              |
| 2022-12-13 15:02:00 | 5.6              |
| 2022-12-13 15:07:25 | 6.15             |
| 2022-12-13 15:12:49 | 5.7              |
| 2022-12-13 15:18:14 | 5.75             |
| 2022-12-13 15:23:38 | 5.95             |
| 2022-12-13 15:29:03 | 5.6              |
| 2022-12-13 15:34:27 | 6.15             |
| 2022-12-13 15:39:52 | 5.65             |
| 2022-12-13 15:45:16 | 5.95             |
| 2022-12-13 15:50:42 | 5.75             |
| 2022-12-13 15:56:06 | 5.65             |
| 2022-12-13 16:01:30 | 6.05             |
| 2022-12-13 16:06:55 | 5.55             |



## Cold Storage

Sensors can detect issues with equipment prior to costly failure by indicating irregular outputs. This can prevent stock loss and expensive replacement of equipment.

Irregular temperature fluctuations can indicate that a fridge or freezer is faulty or requires maintenance, which enables them to be repaired or serviced prior to failure or breakdown.

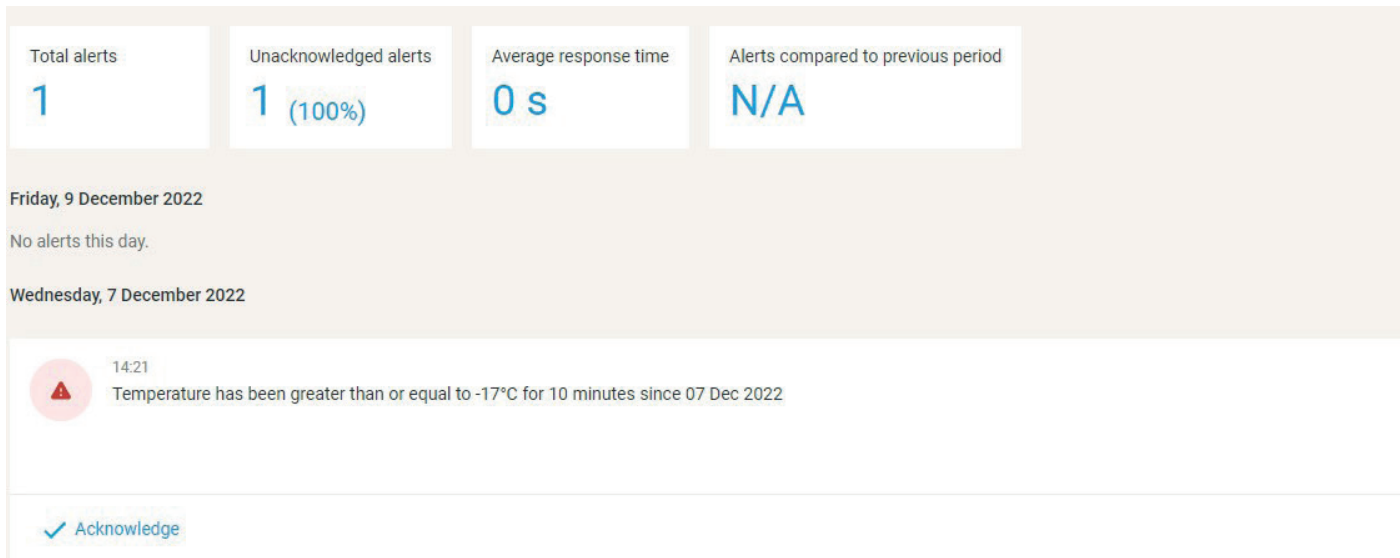




# Cold Storage

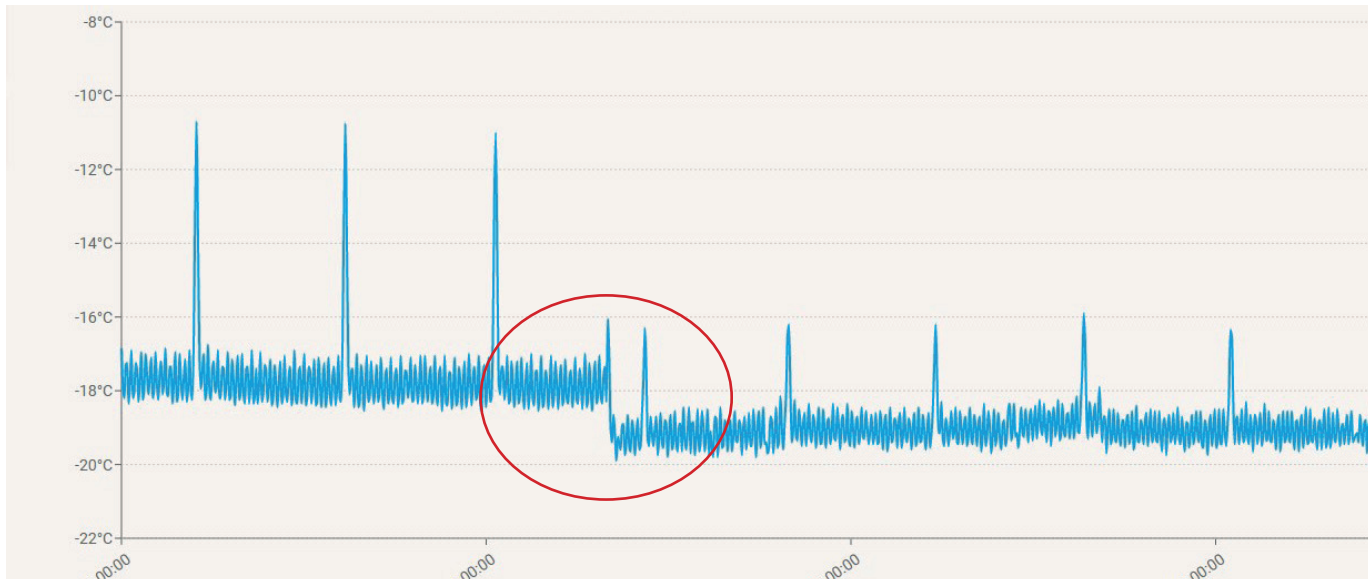
Get alerts sent to your designated members of staff by email or SMS when temperatures go outside of acceptable range. This enables you to act quickly and resolve any problems before they result in wasted stock or illness.

Get automated reports to show temperatures over time to comply with medication and food safety requirements.

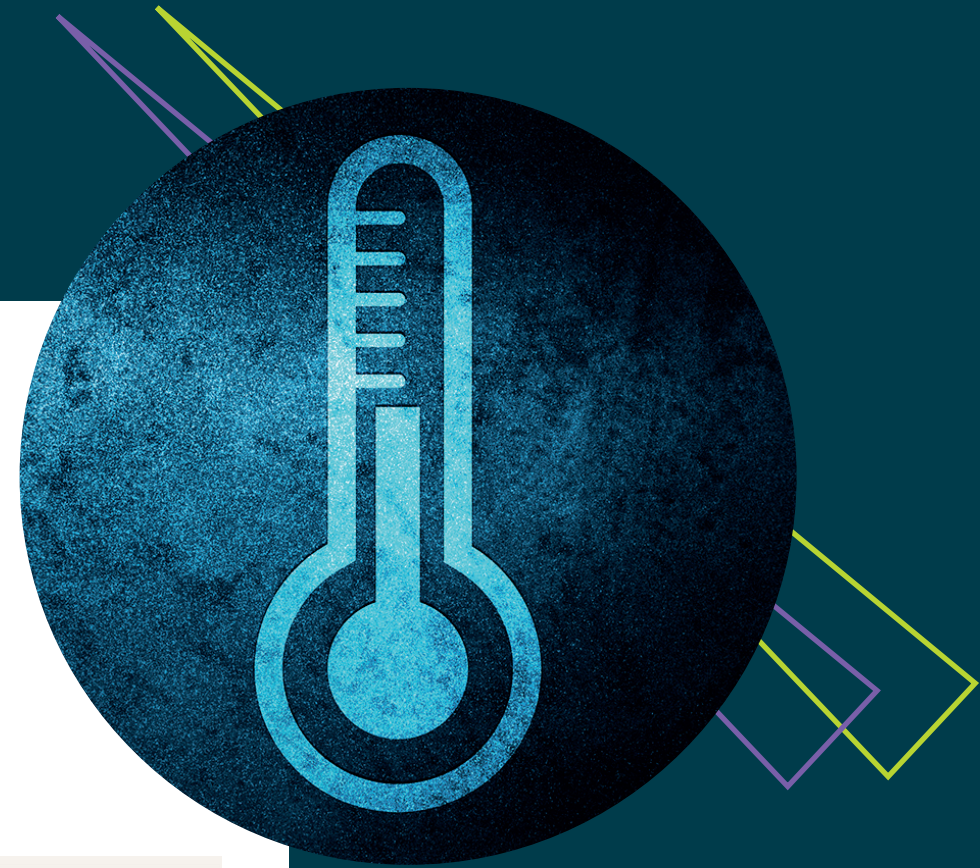


# Cold Storage

Monitor by exception. The platform is available to see temperatures at any time, however, the real strength is in monitoring by exception. Have peace of mind, knowing that all temperatures are as they should be, unless you get an alert to tell you otherwise. Working by exception creates huge efficiencies and saves valuable staff time.



\*An alert was triggered that this freezer was outside of required parameters, so the freezer was turned down by 2 degrees.

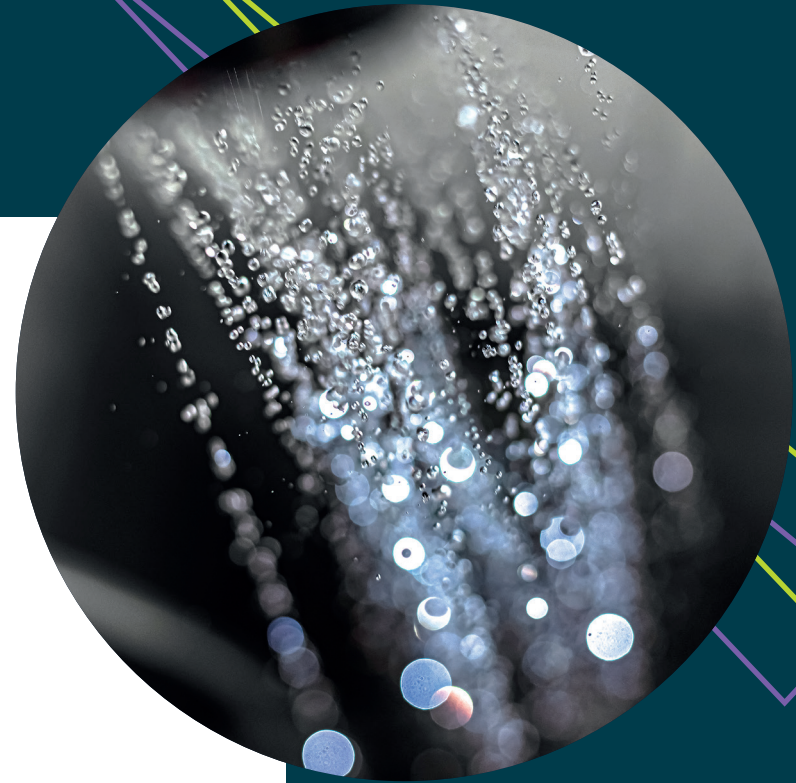


## Legionella & Pipe Monitoring

HSG274 Part 2, also known as ACOP L8 outlines what steps are necessary to control legionella in hot and cold water systems.

Whether you undertake these steps internally, or engage an external company, there is a huge cost in terms of time and money to comply.

Flushing one tap once a week for 5 minutes at the required temperature uses around 600 litres of water annually, plus there is an energy cost to heat the water and a staff cost to manually flush, record it and produce the compliance report.







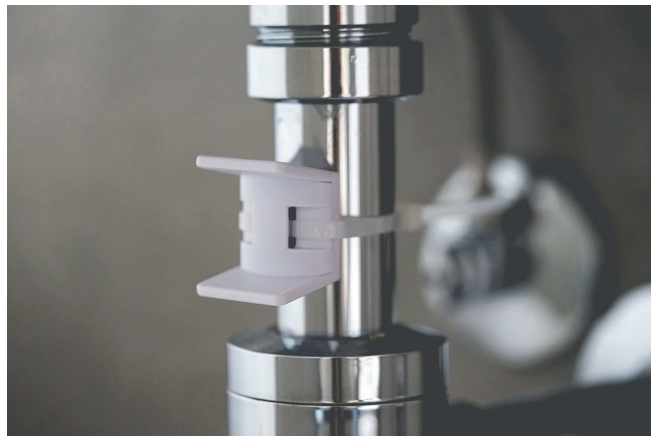
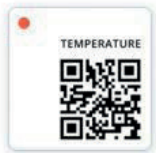
**IoT Sensor Solutions**  
To drive efficiency and savings

## Legionella & Pipe Monitoring

Typically only 2-10% of pipes actually need flushing, but as there is no way to identify which ones, they all get flushed for L8 compliance

With Syght's remote monitoring system, a sensor is installed on pipes to continuously monitor water flow and temperature.

As a result, facilities and maintenance managers can know exactly which taps have been used and whether or not they need flushing.





## Leak Detection

Sensors can be mounted on pipes and monitor for leaks, which can save damaged stock or premises.

Get alerts for high humidity and water leaks the moment they happen, so you can act fast and fix problems before they cause damage and disruption.

Don't wait for problems to be reported or identified during inspections, be alerted as soon as they happen to avoid damage and costly repairs.



## Air Quality

The conditions of indoor environments have never been more important to peoples' health, safety and comfort. On top of the risk of viruses spreading, levels of pollutants can be two to five times higher indoors than outdoors.

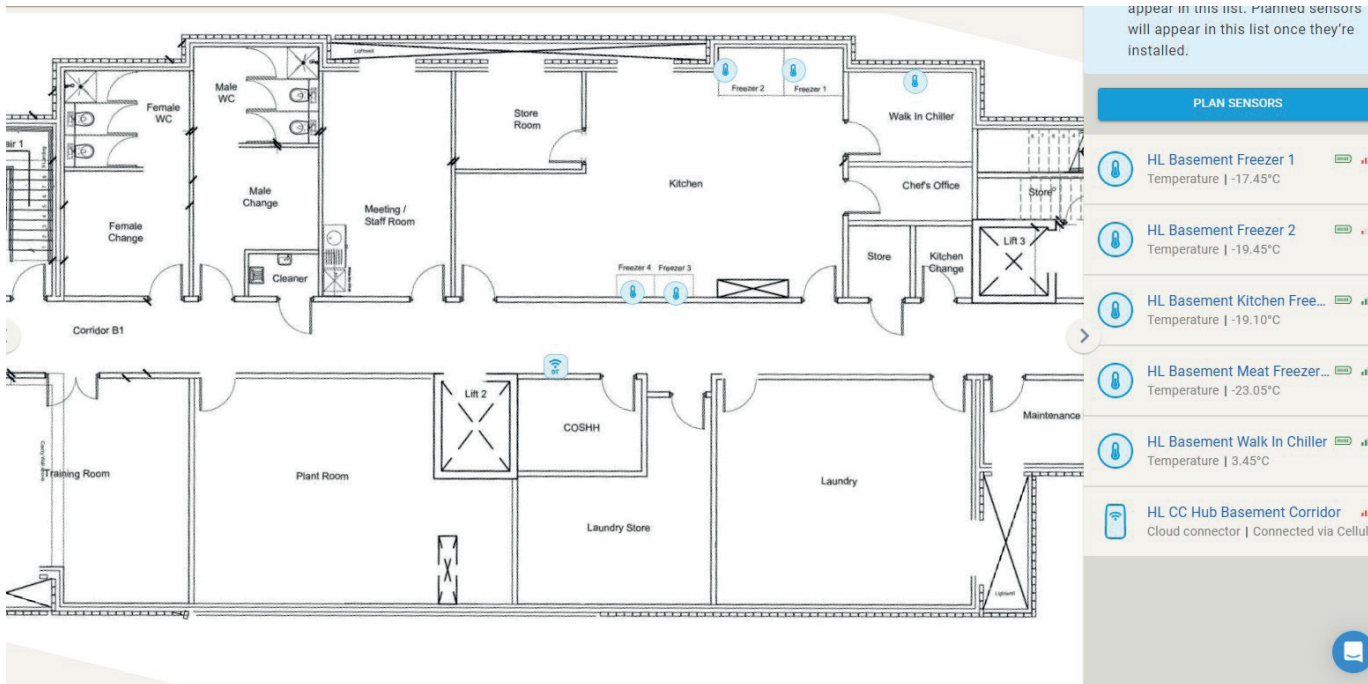
Measurable factors affect viral risk within buildings such as temperature, humidity and CO2 levels.

Get air quality data and alerts in real-time to mitigate viral risk, with sensor technology feeding your decisions and actions.



## Set Up

To set up we upload your floor plan to the app and map your sensors to give you overview of your premises:



# SET UP





**IoT Sensor Solutions**  
To drive efficiency and savings

# Thank you

for more information visit

<https://syght.co.uk/>

We are happy to arrange a product demo and talk through a bespoke solution for your requirements.

