



Thermography Case Studies

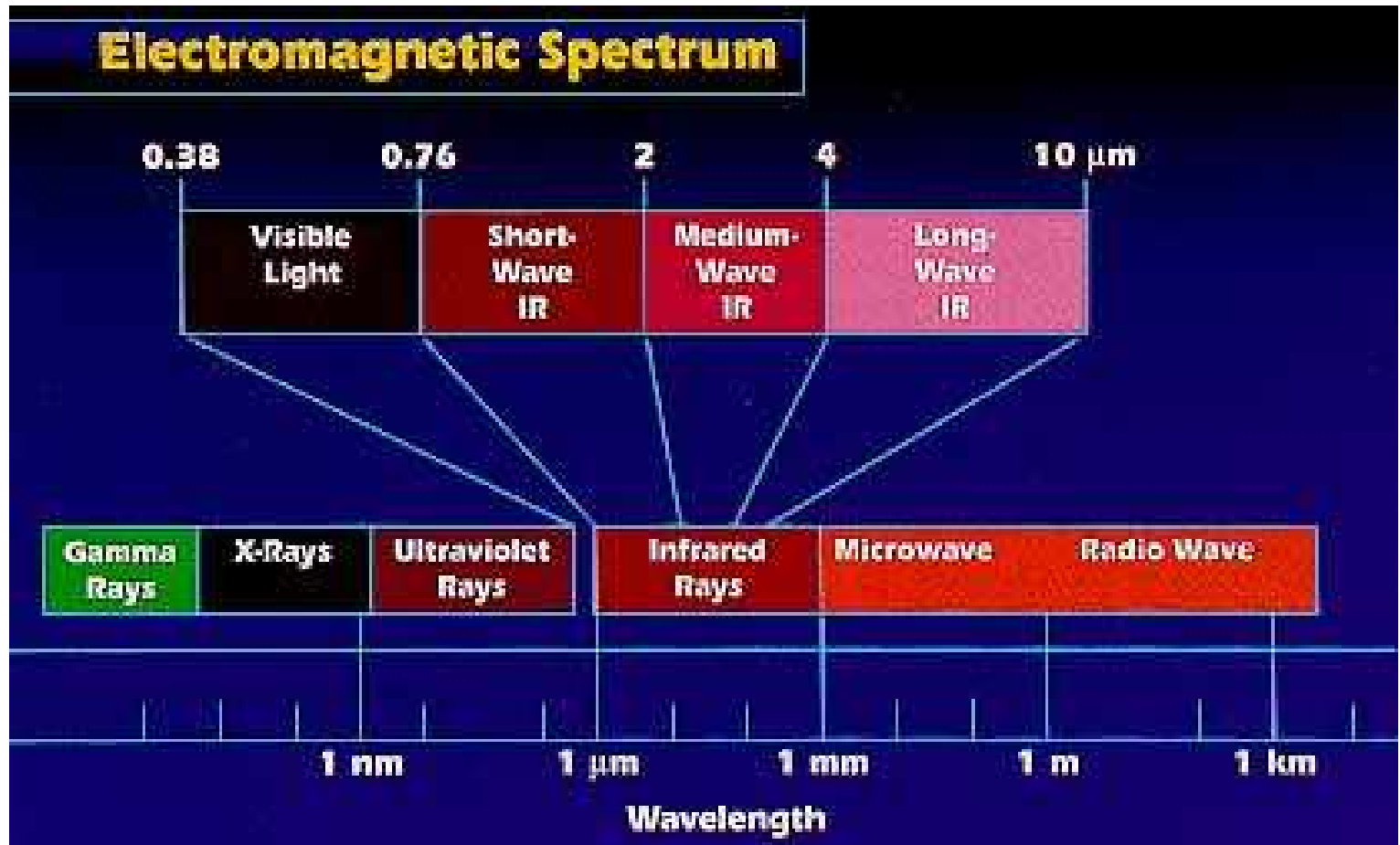
**Piedmont Chapter of the
Vibration Institute
September 17, 2010**

David Gleaton

Carolina **INFRARED LLC**

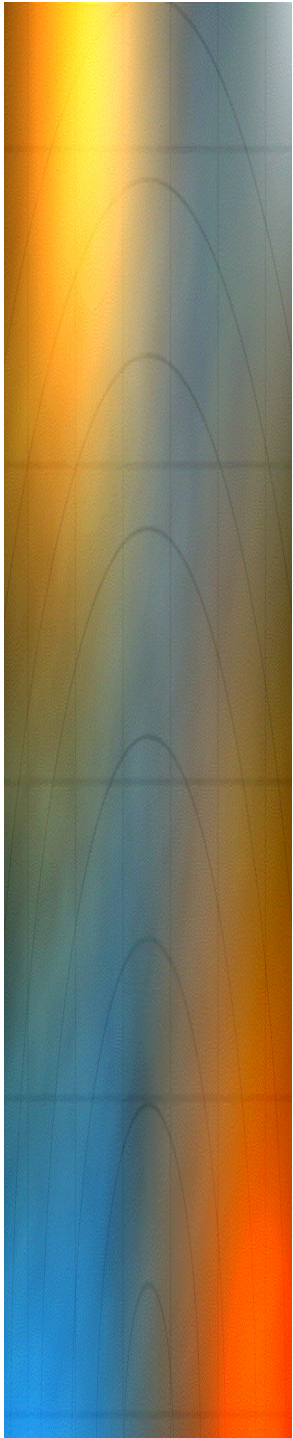
Lexington, SC

What is Infrared?

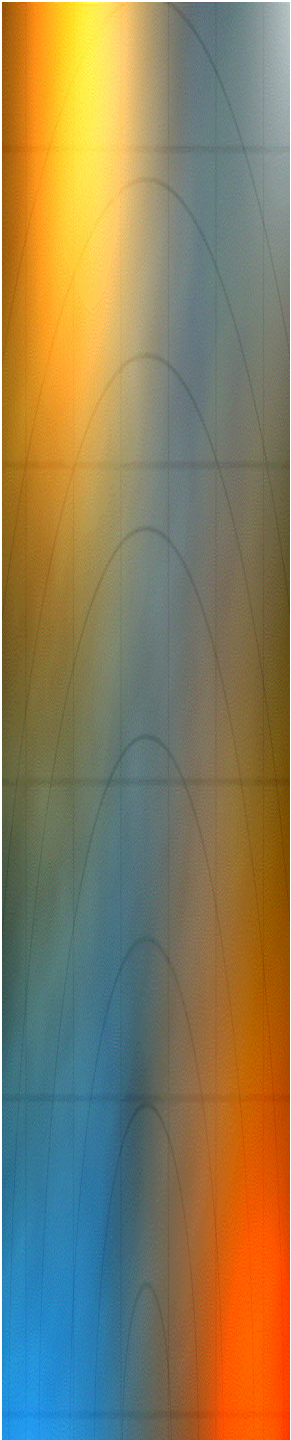
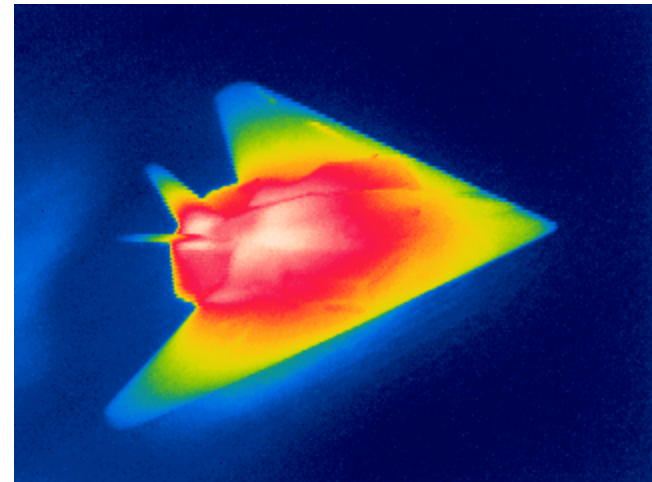
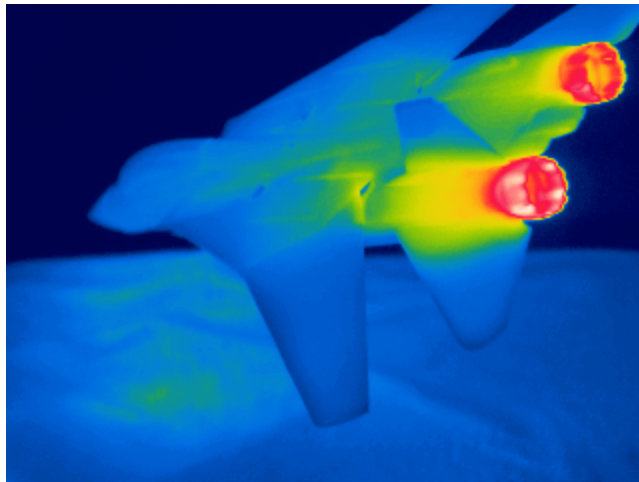
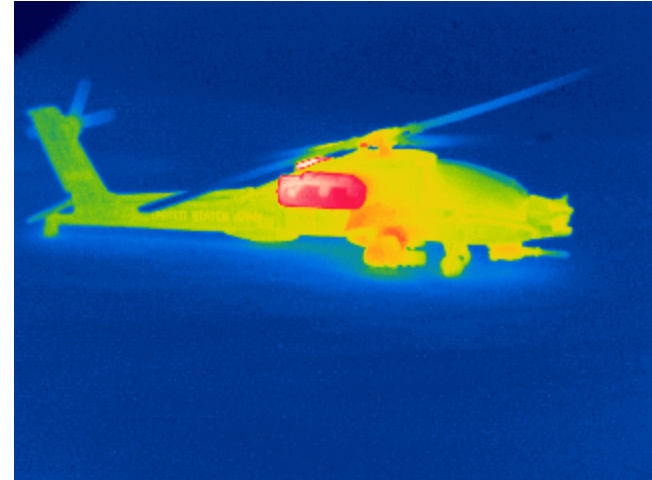
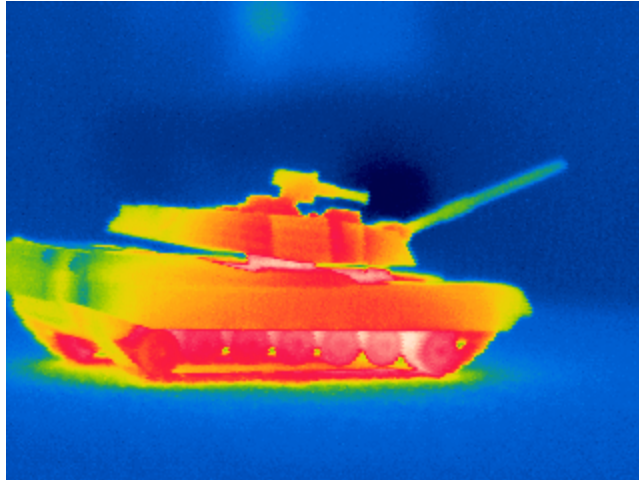


It is invisible thermal energy radiated by all objects above absolute zero degrees Kelvin.

Infrared detection equipment



Technology Advancements



Technology Advancements





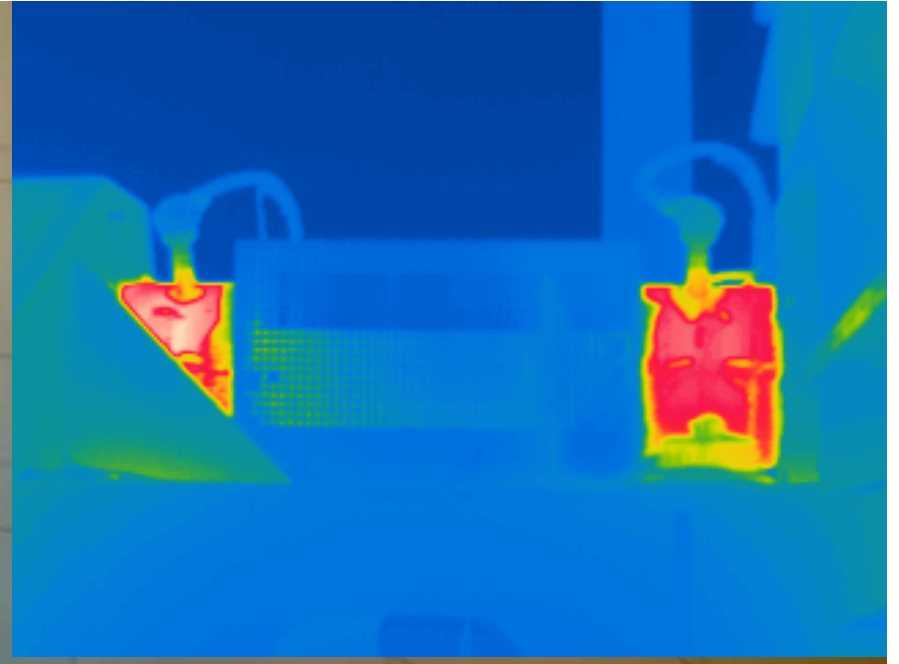




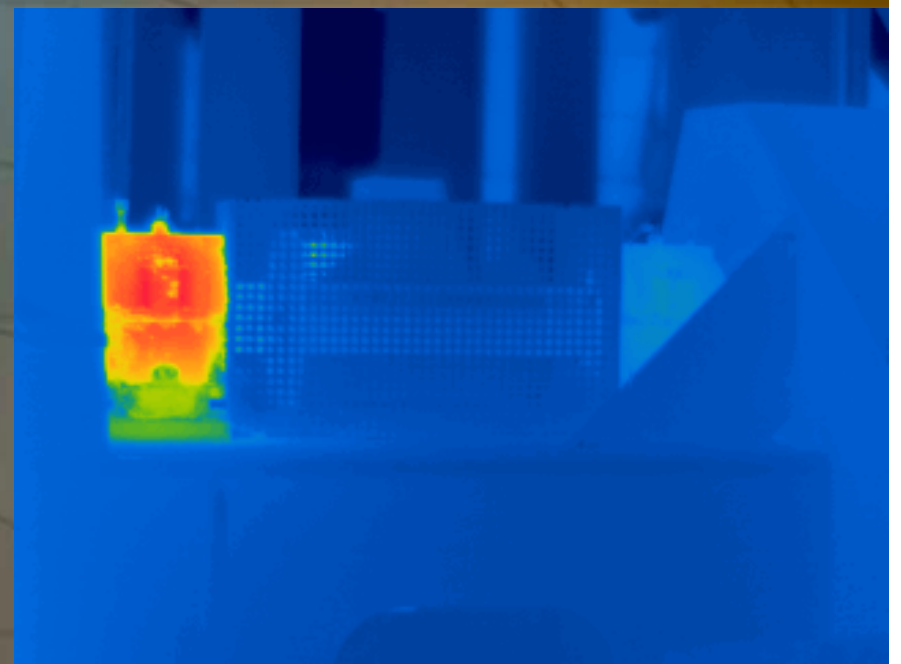
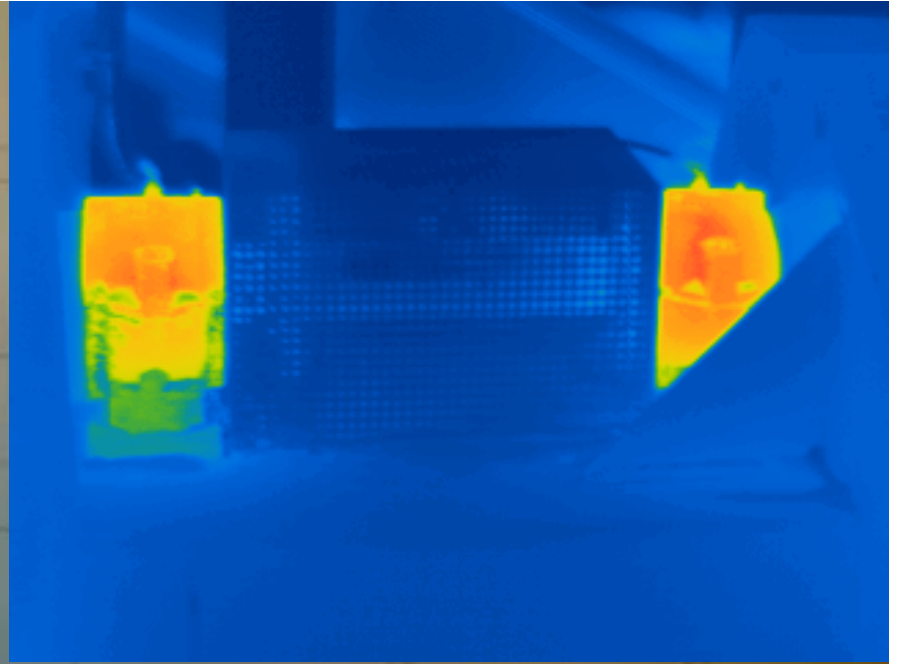




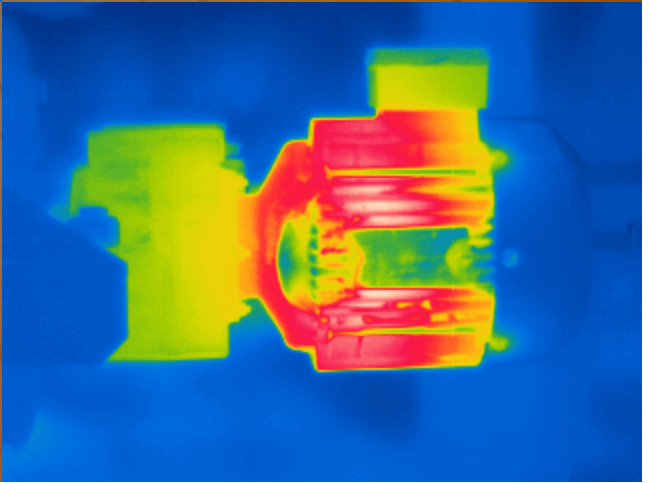
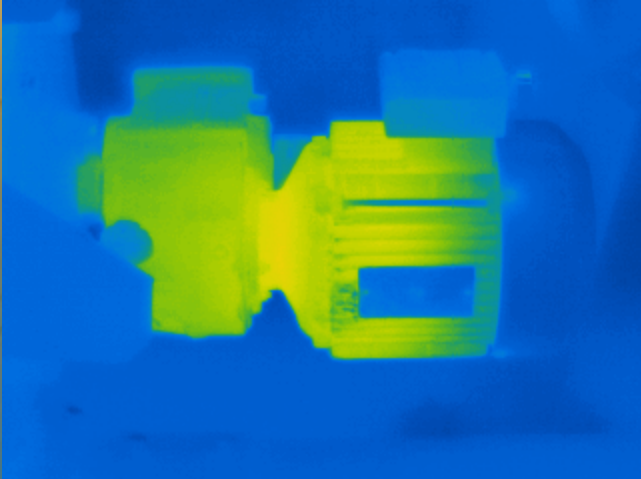
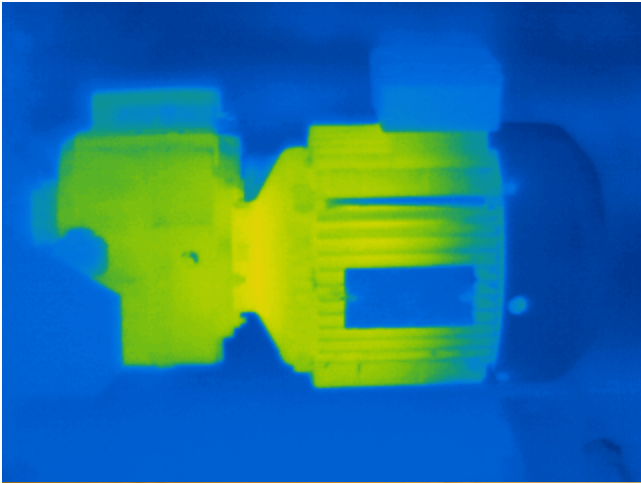


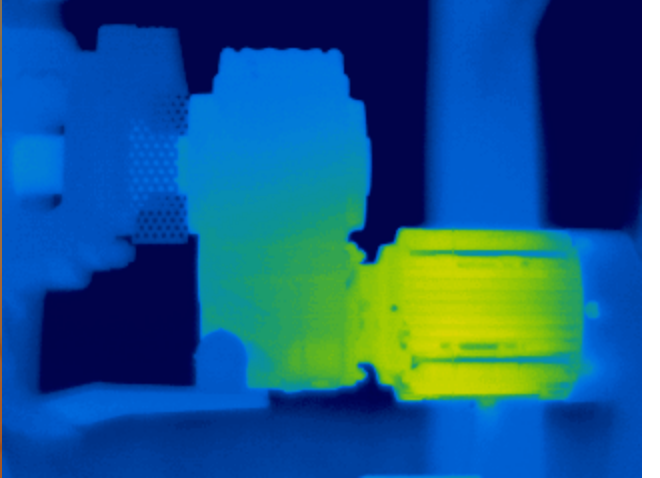
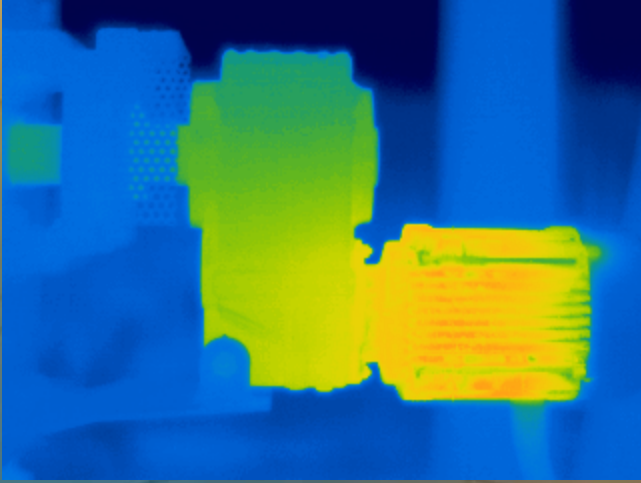
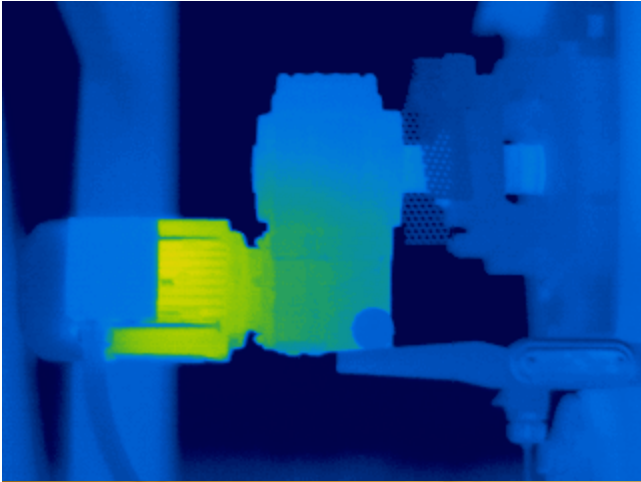


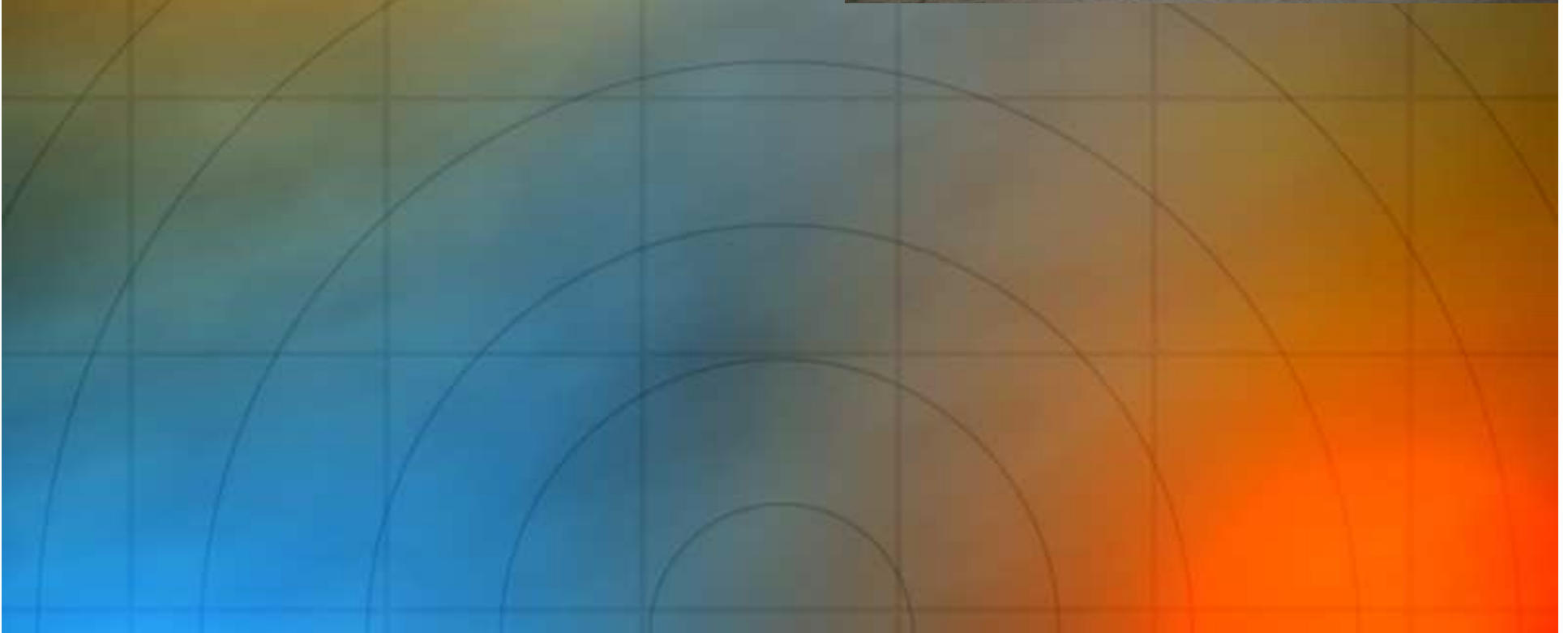


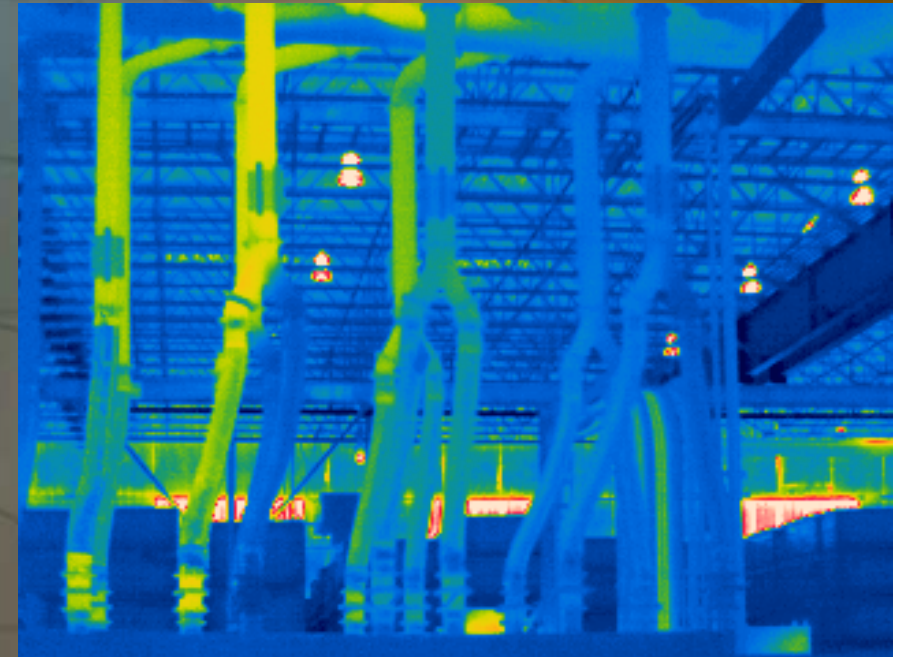
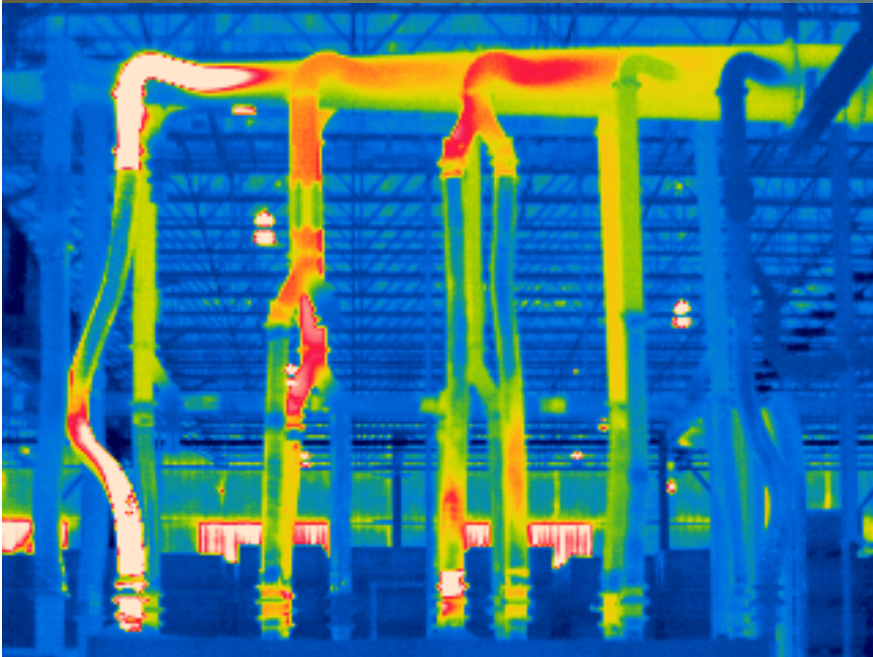




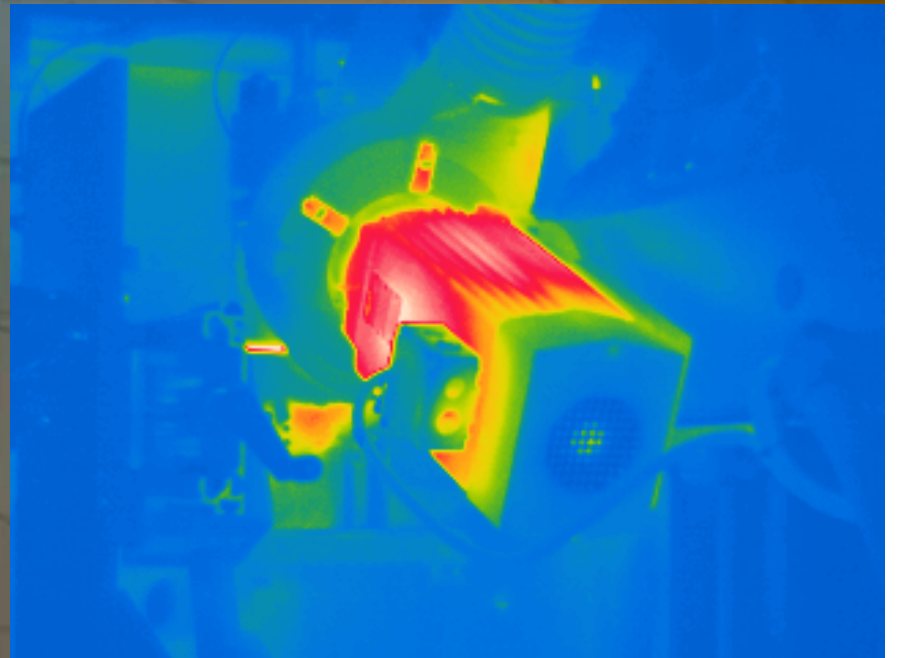
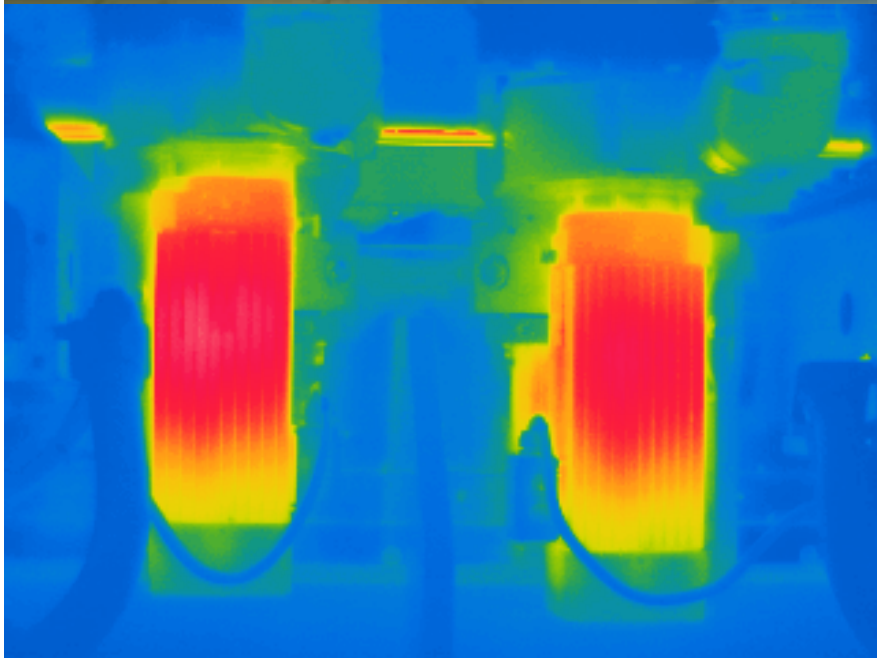
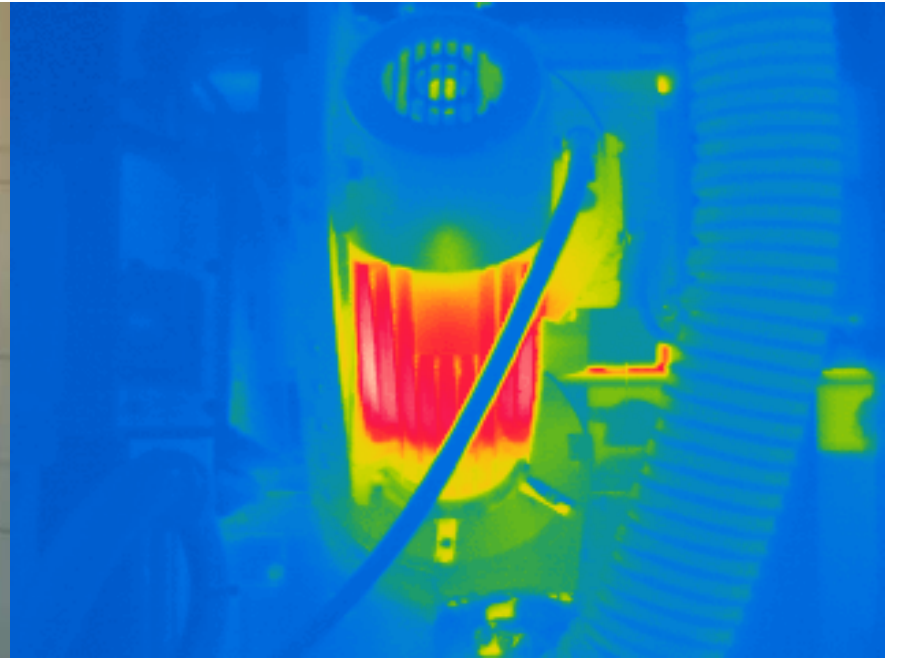
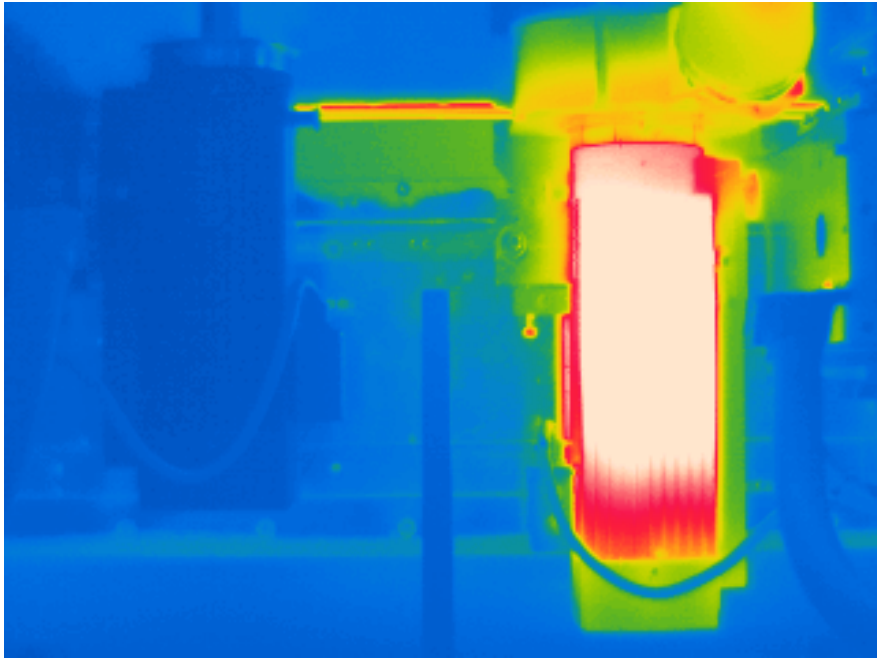


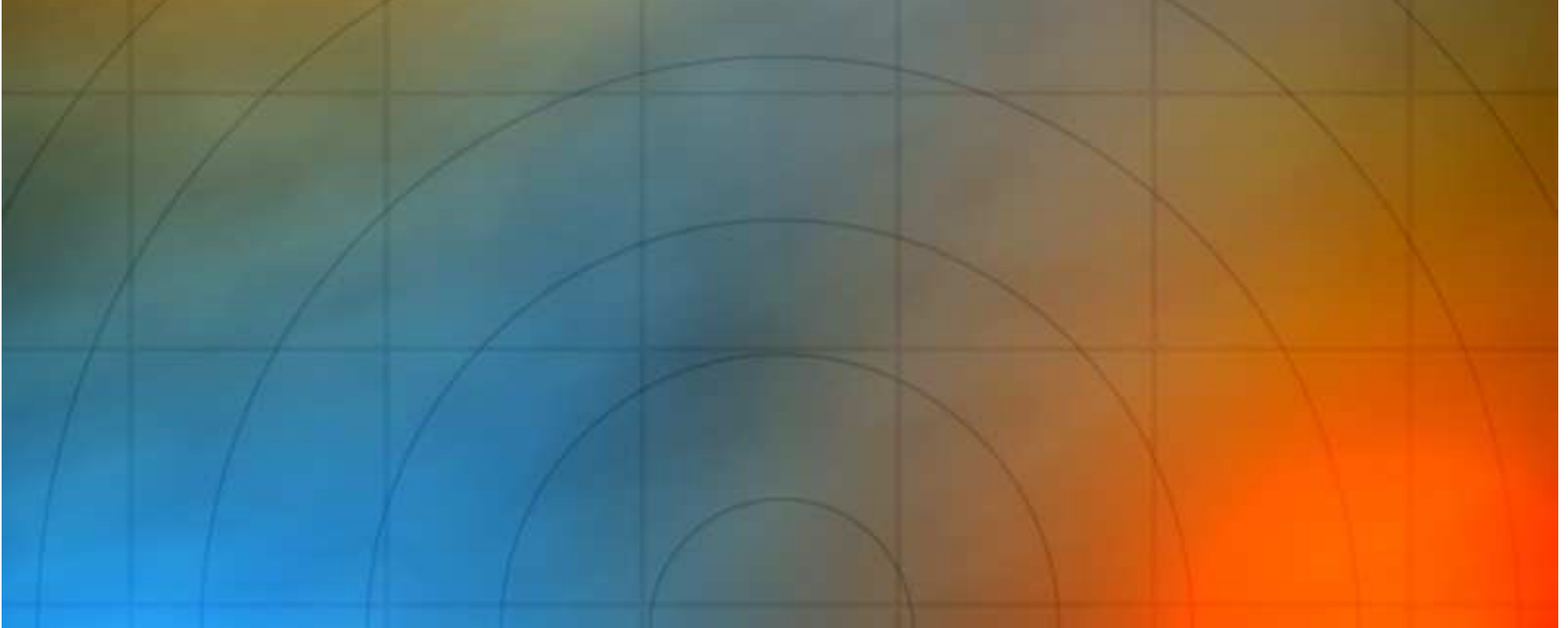


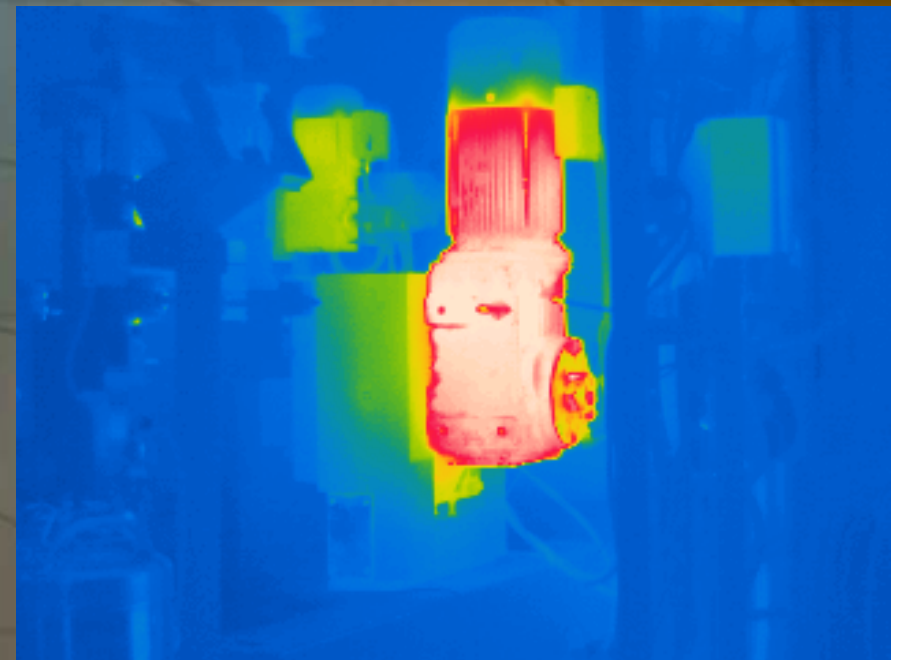
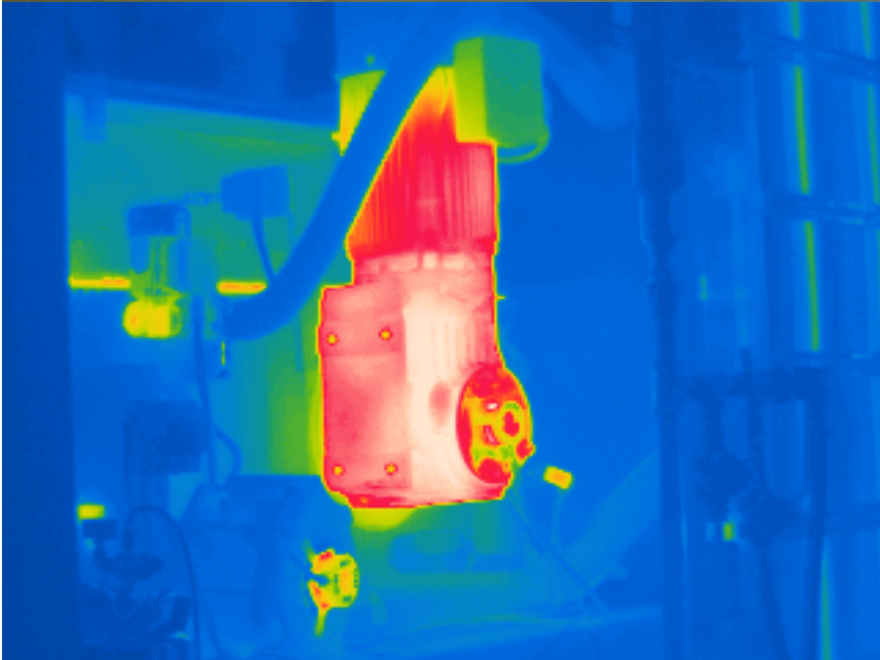




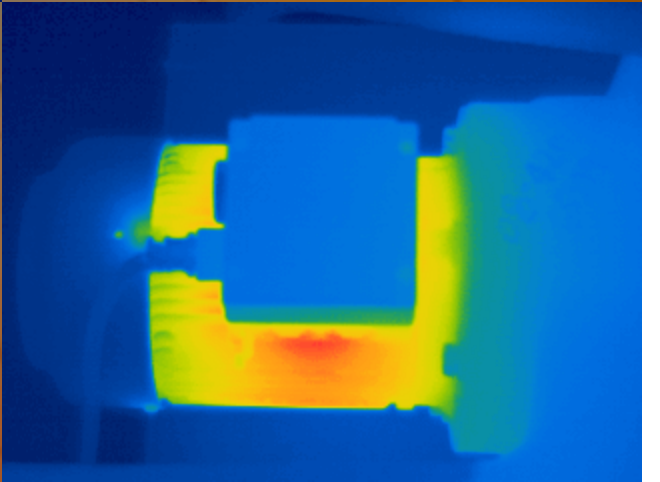
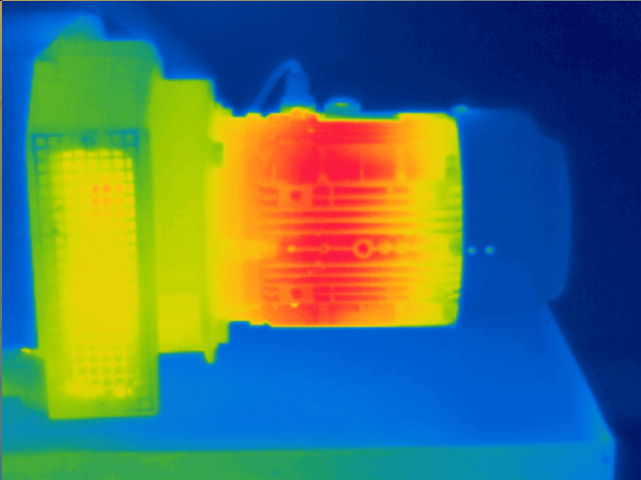
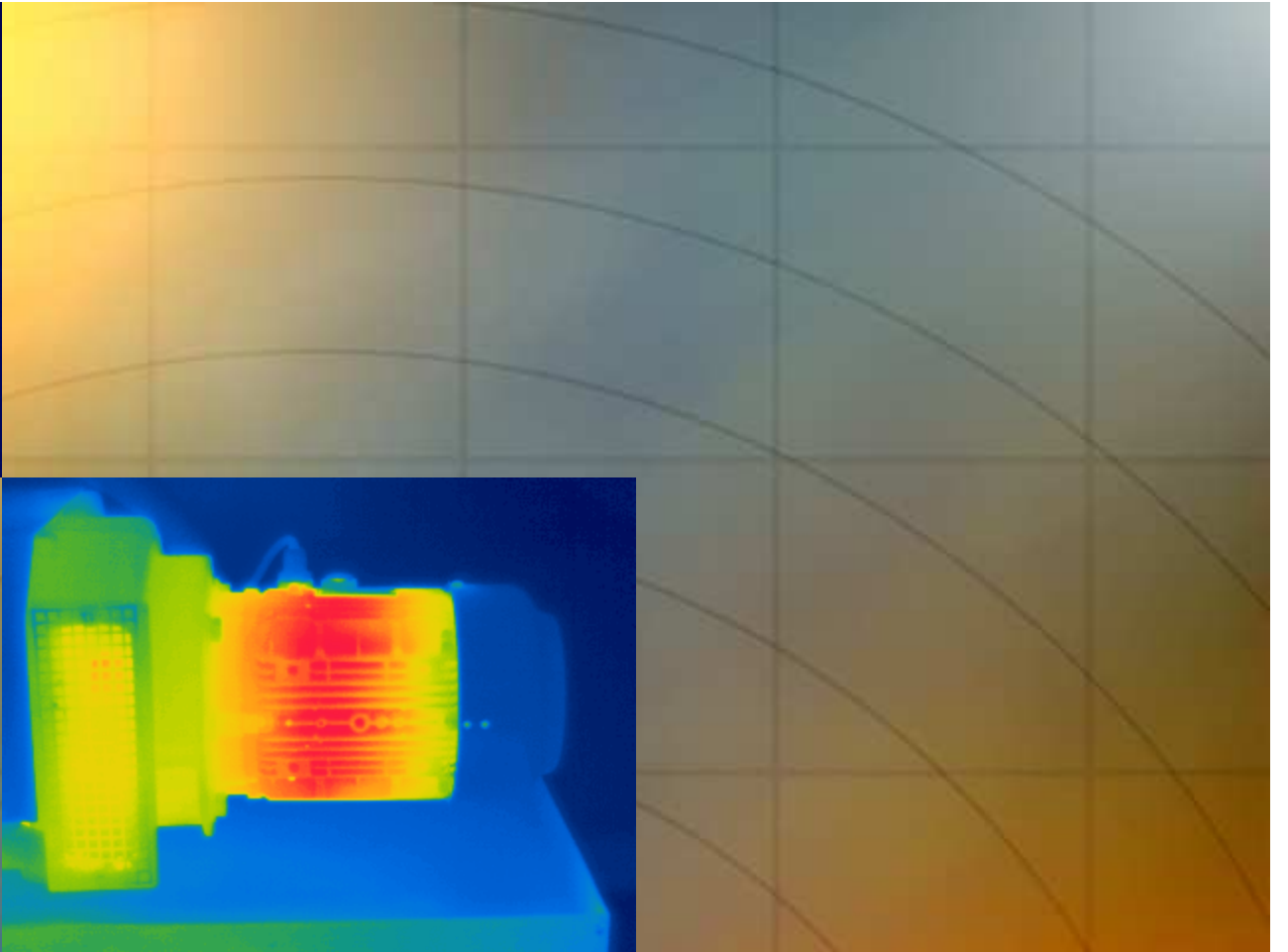
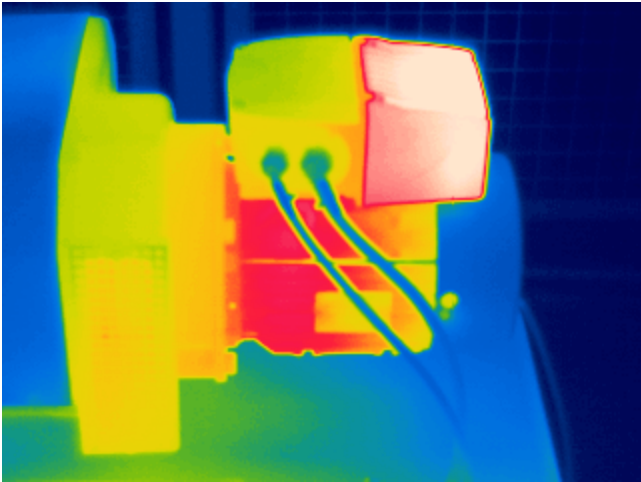




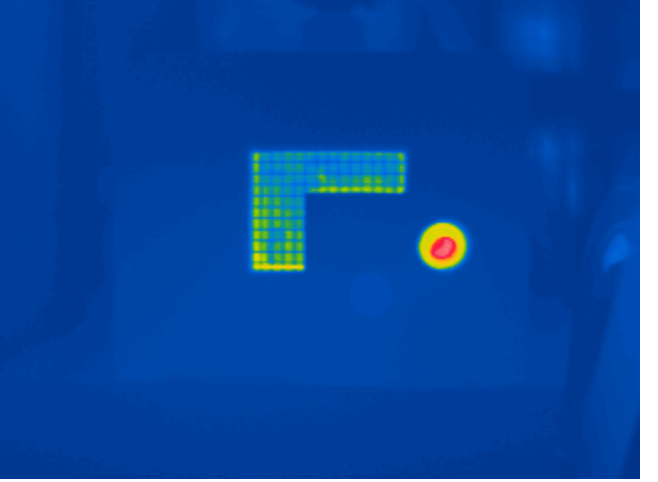
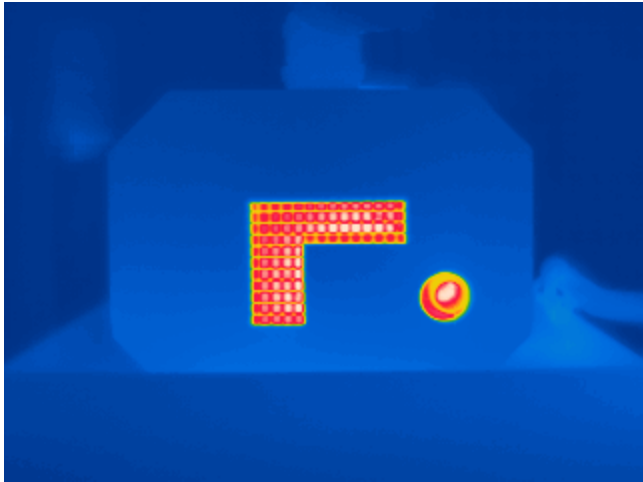


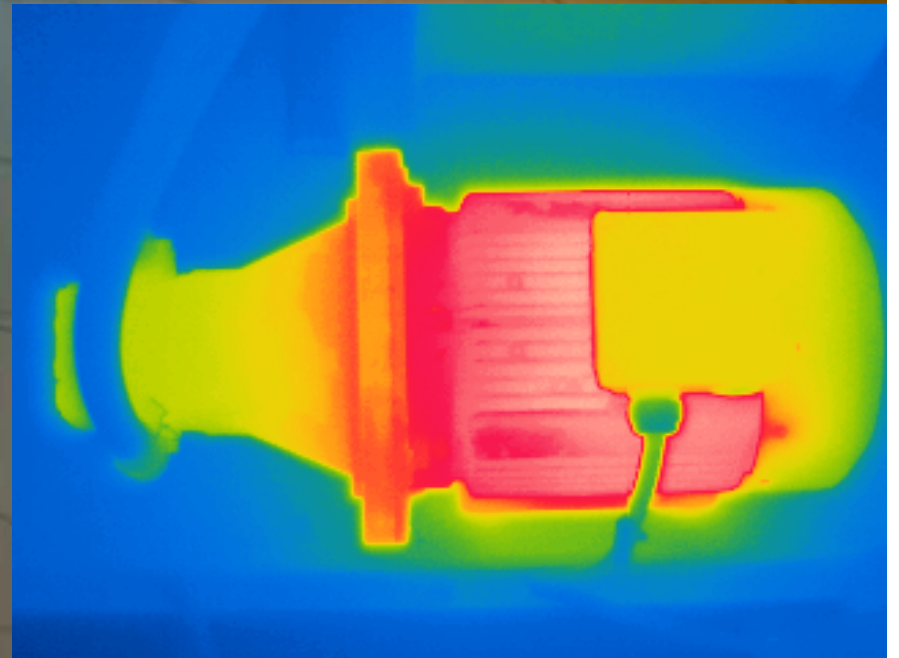
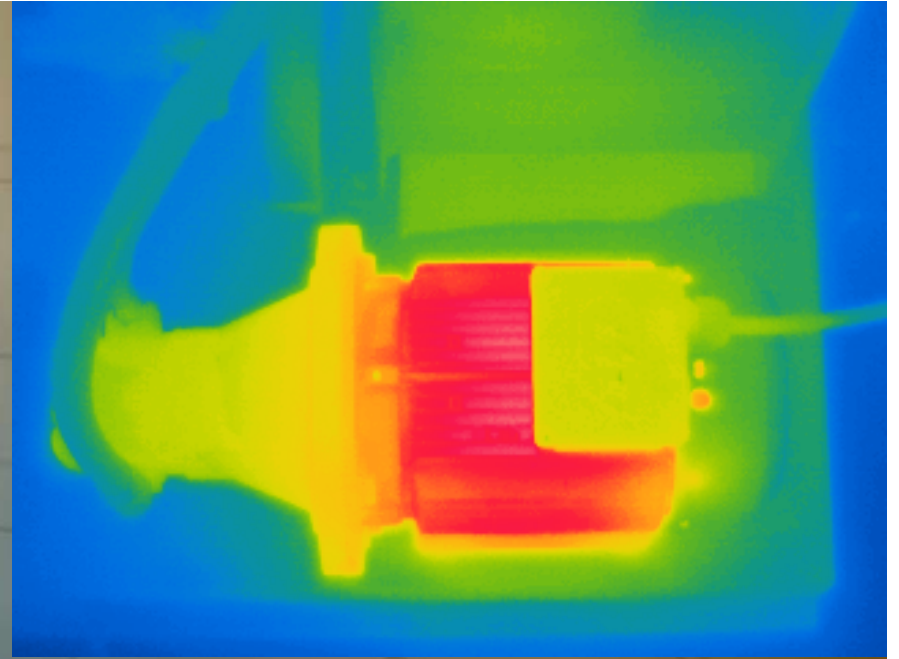


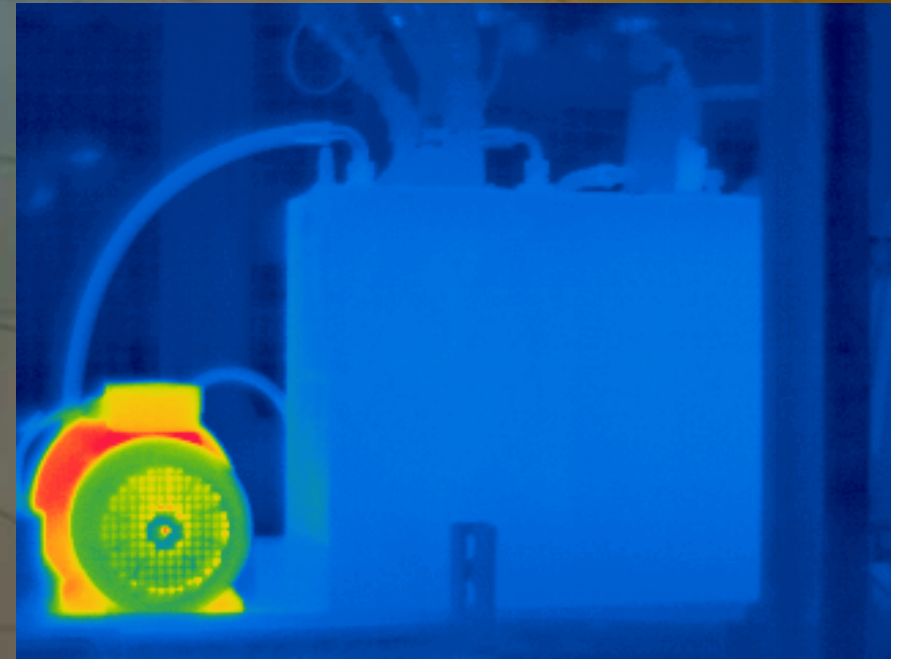
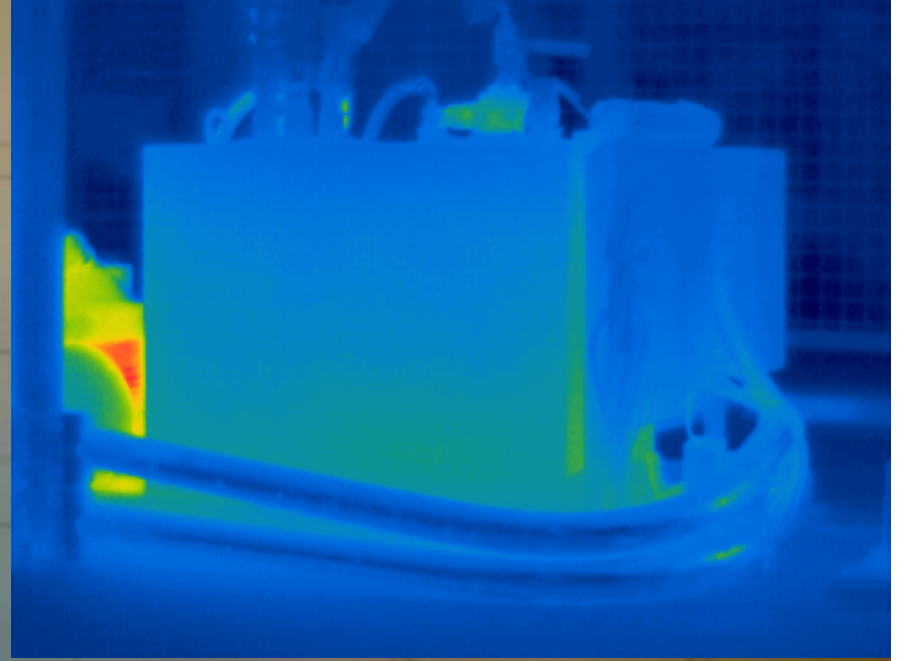


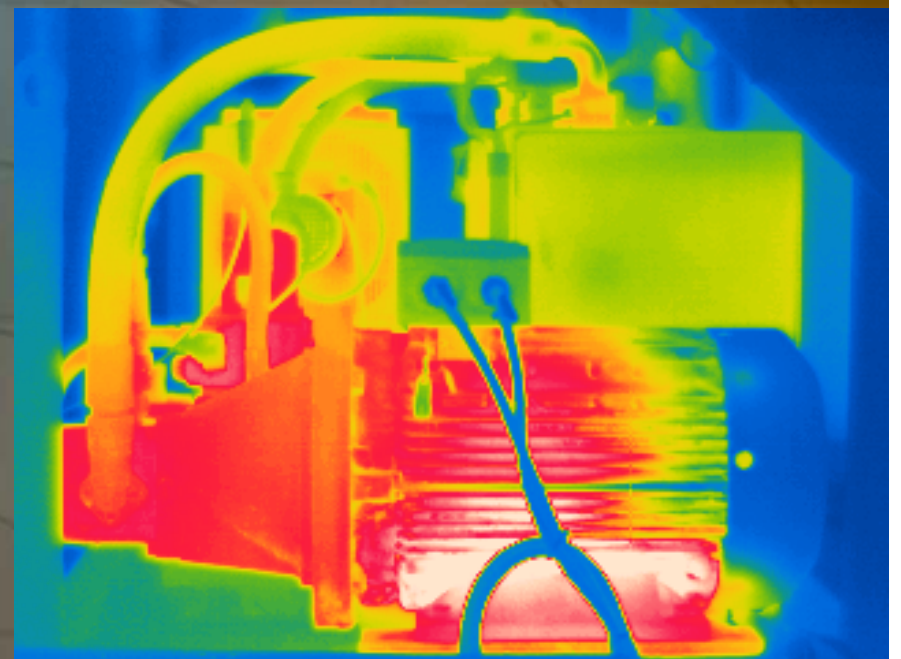
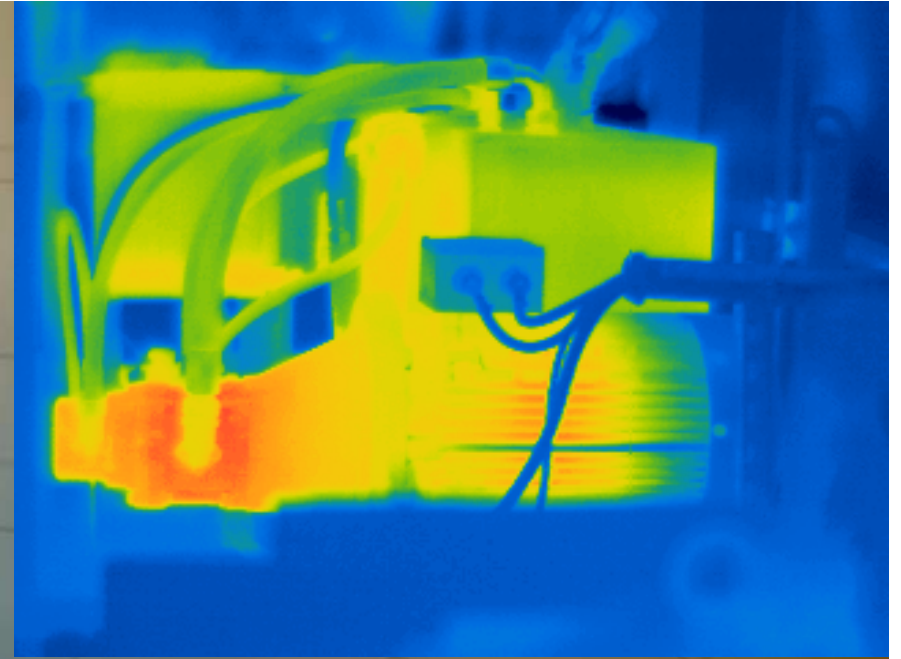
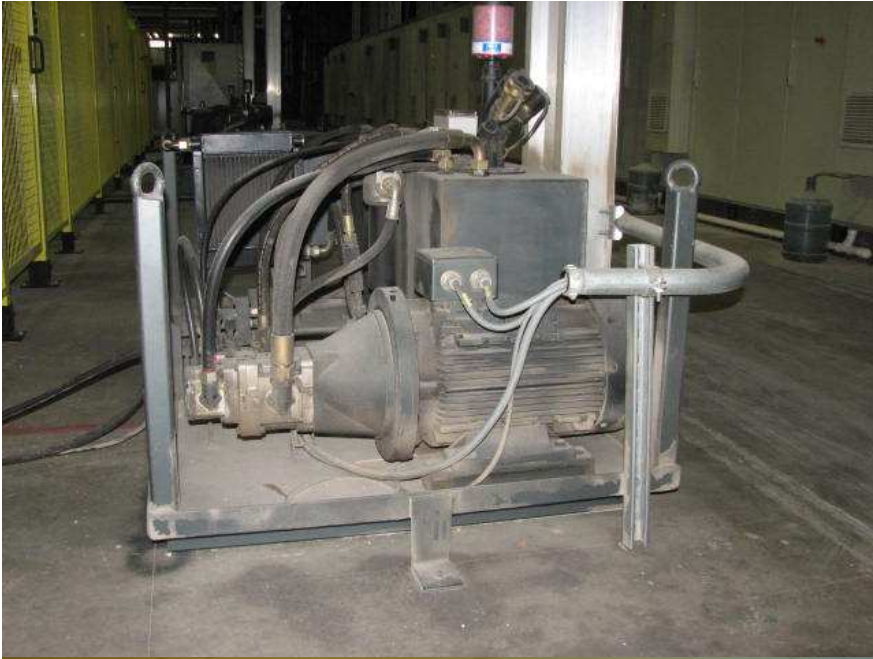


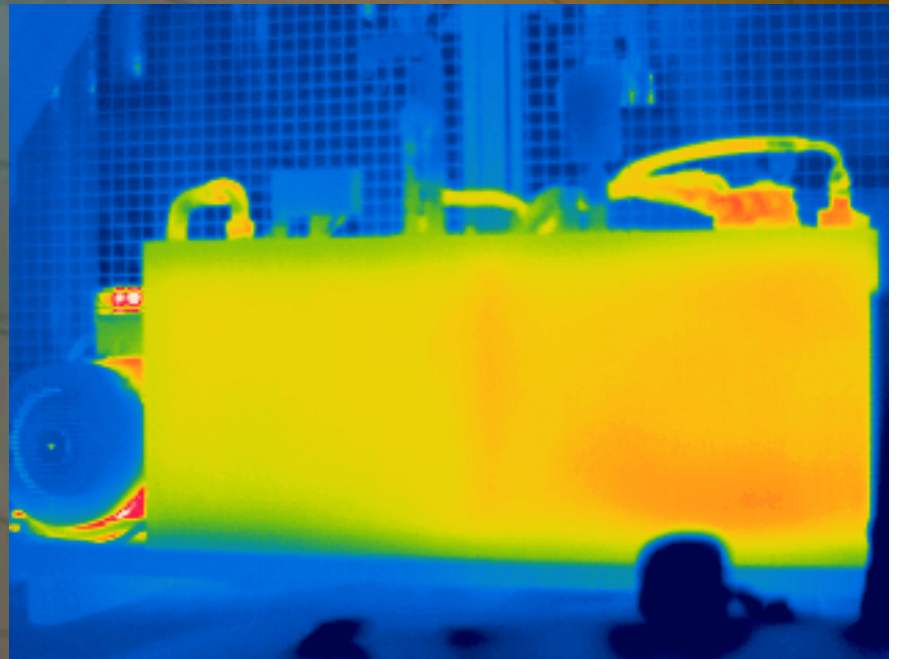
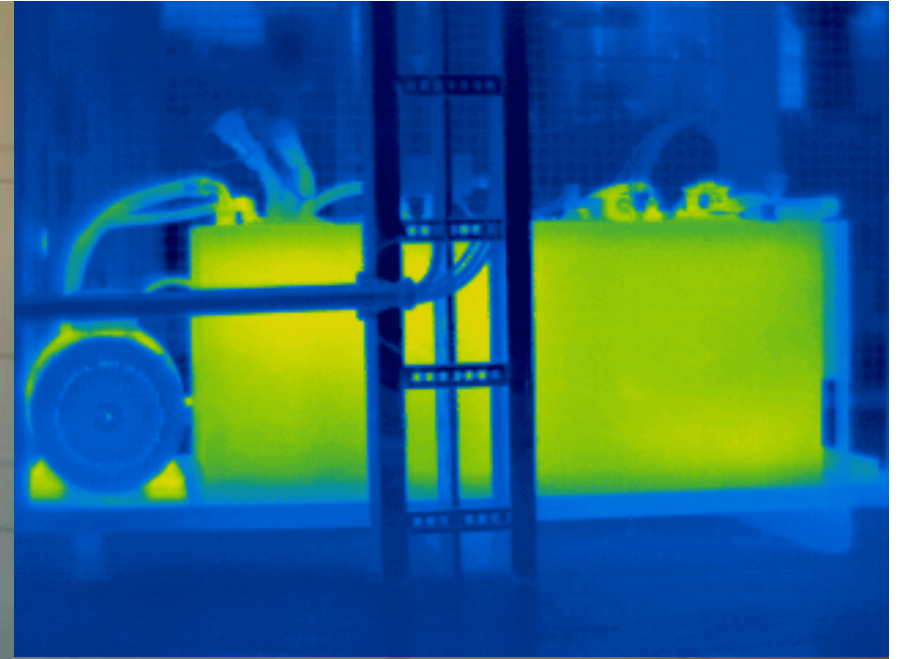




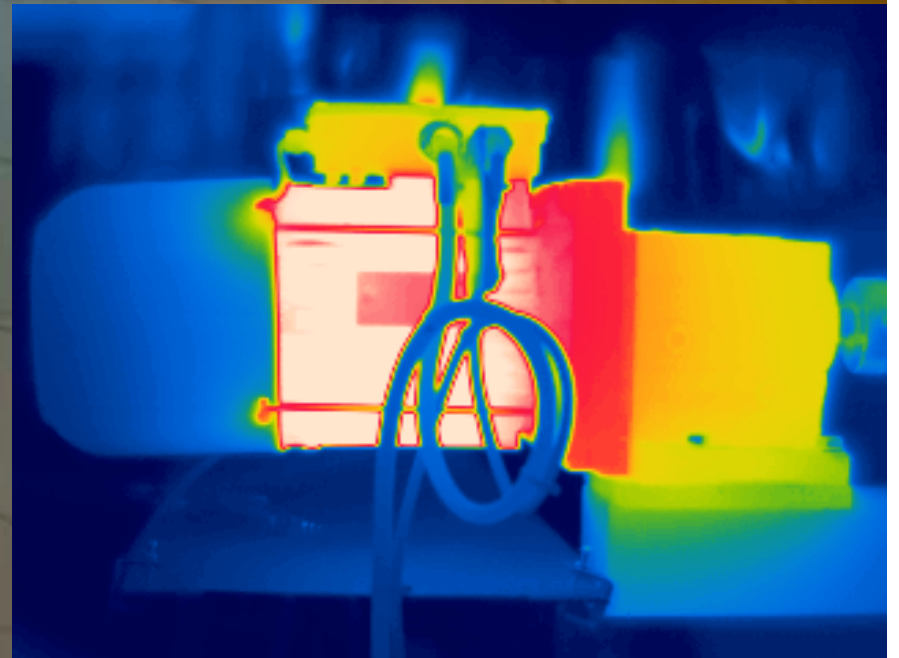
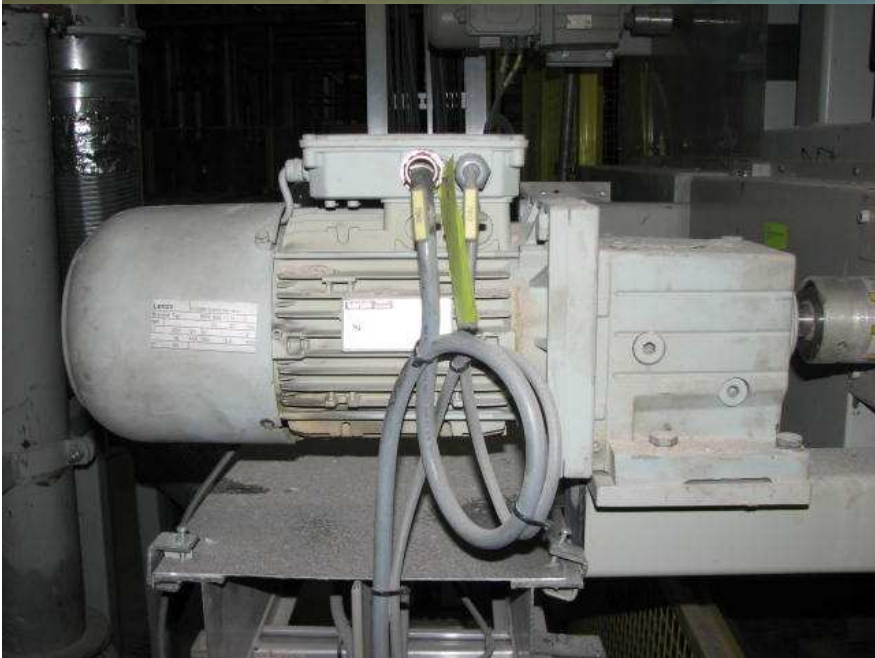
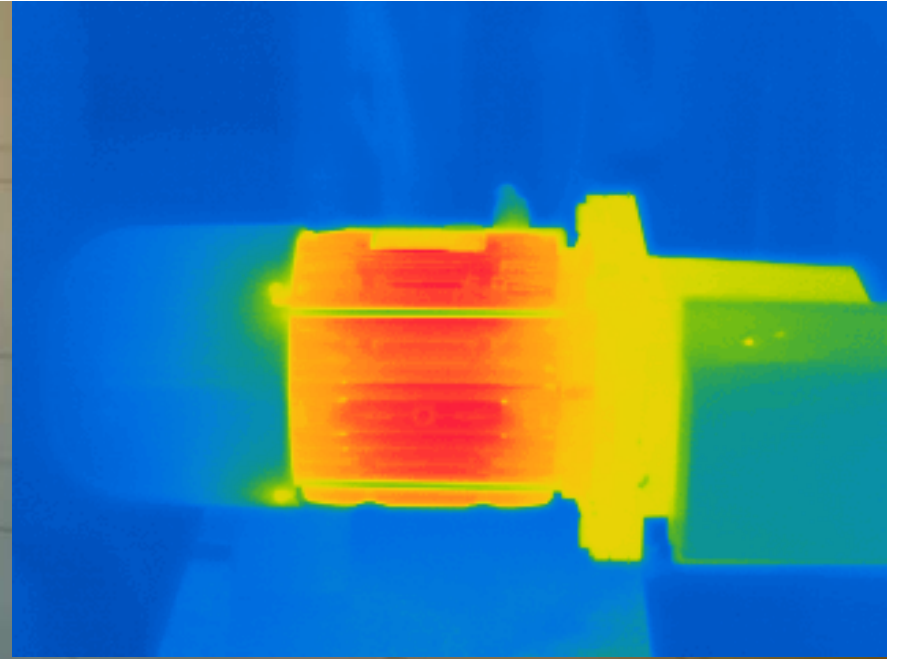


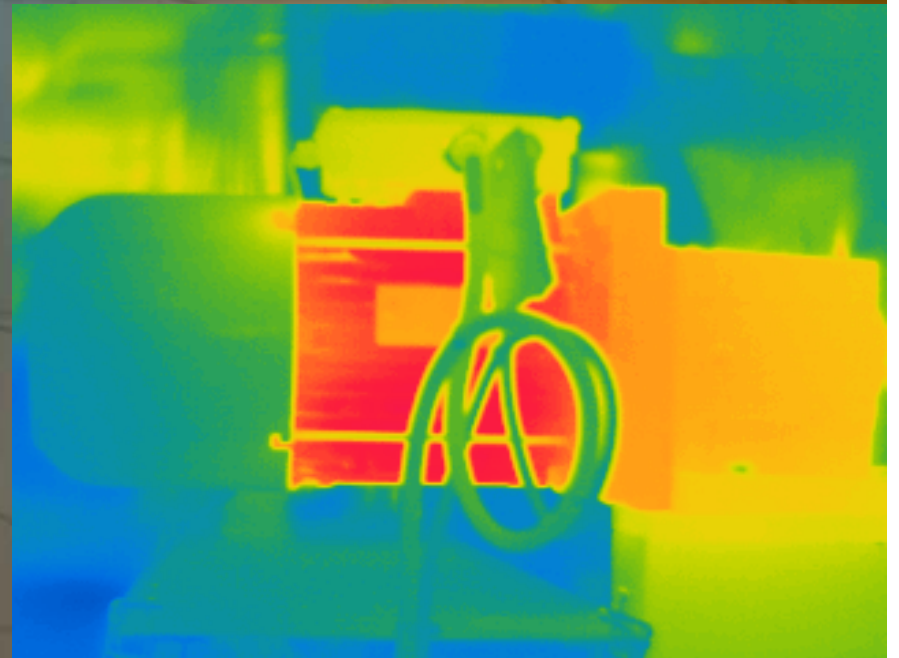
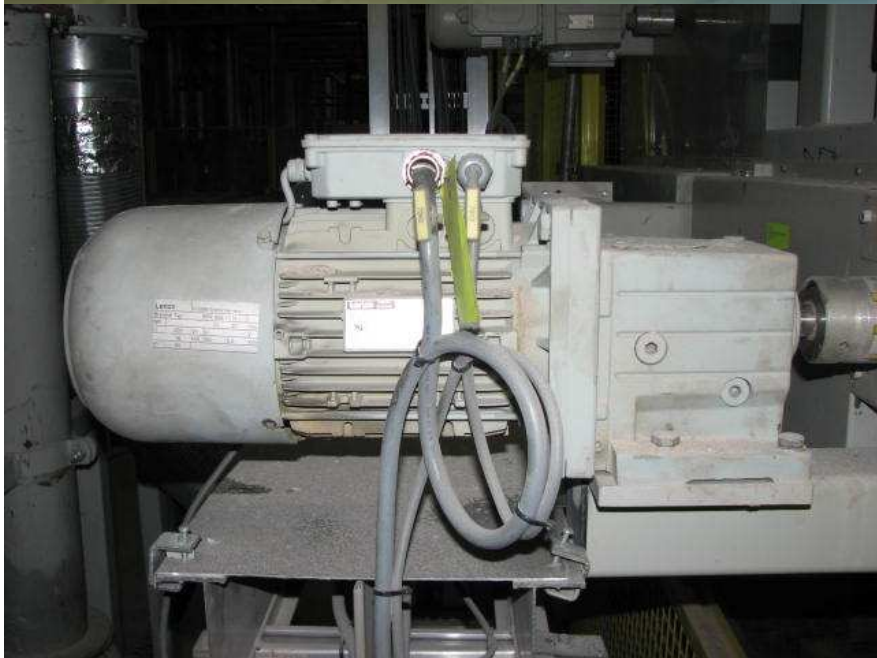
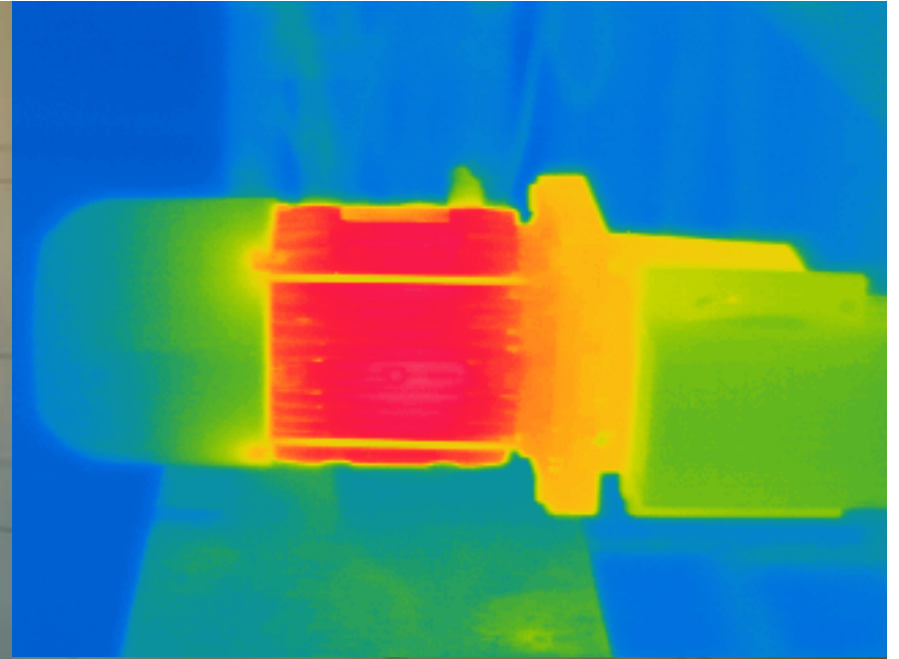


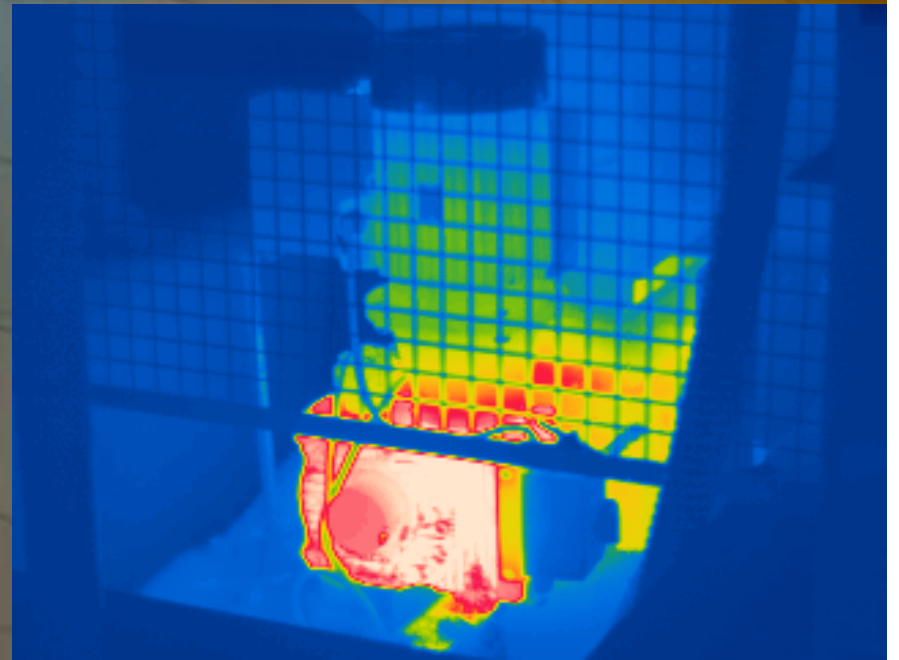
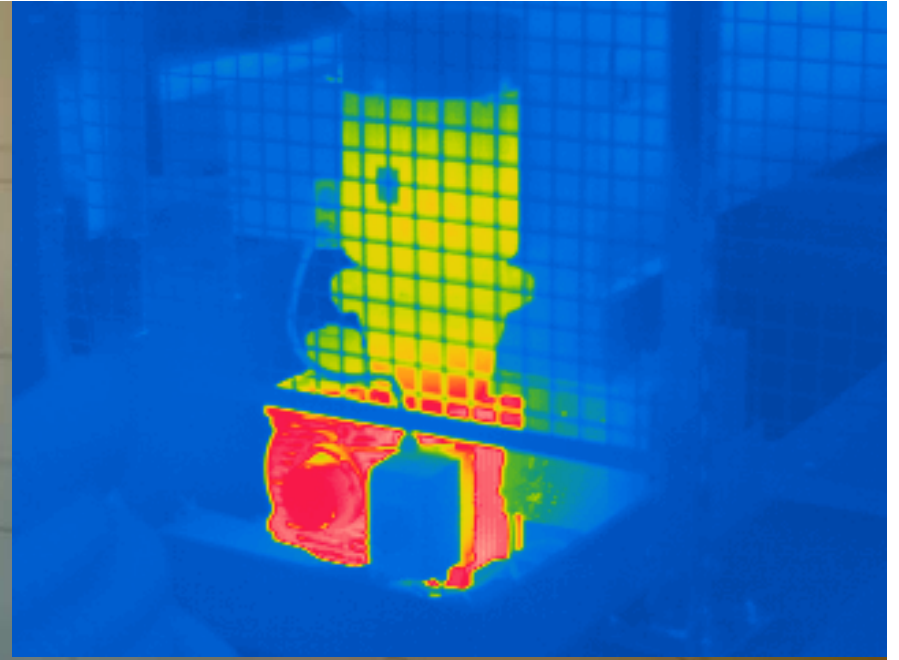


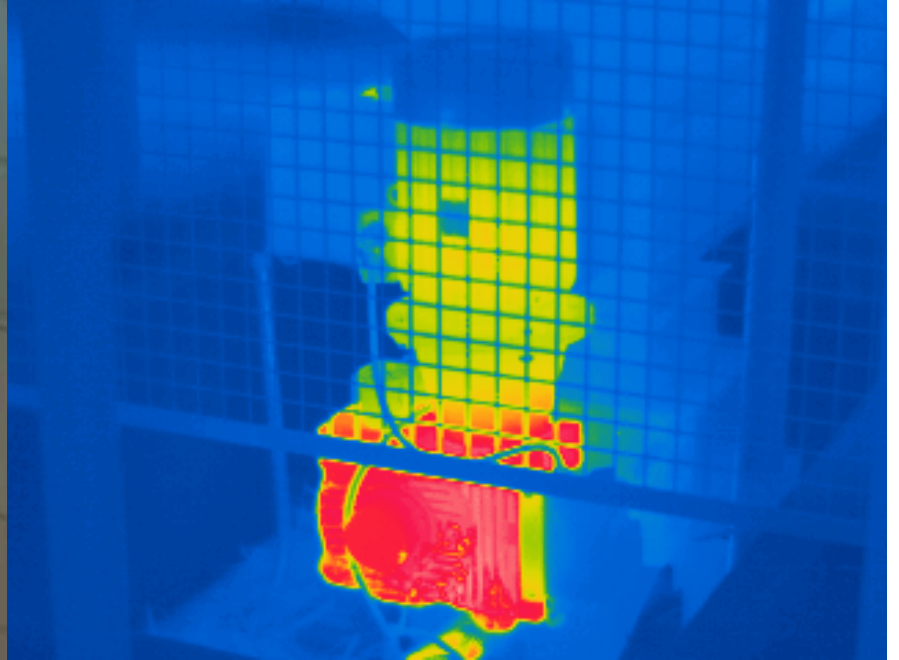
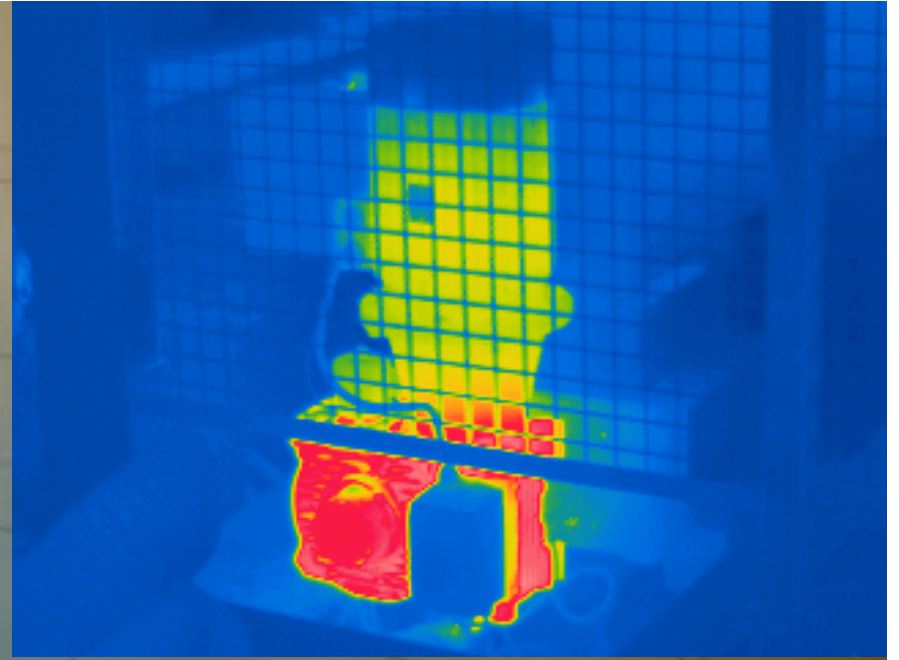


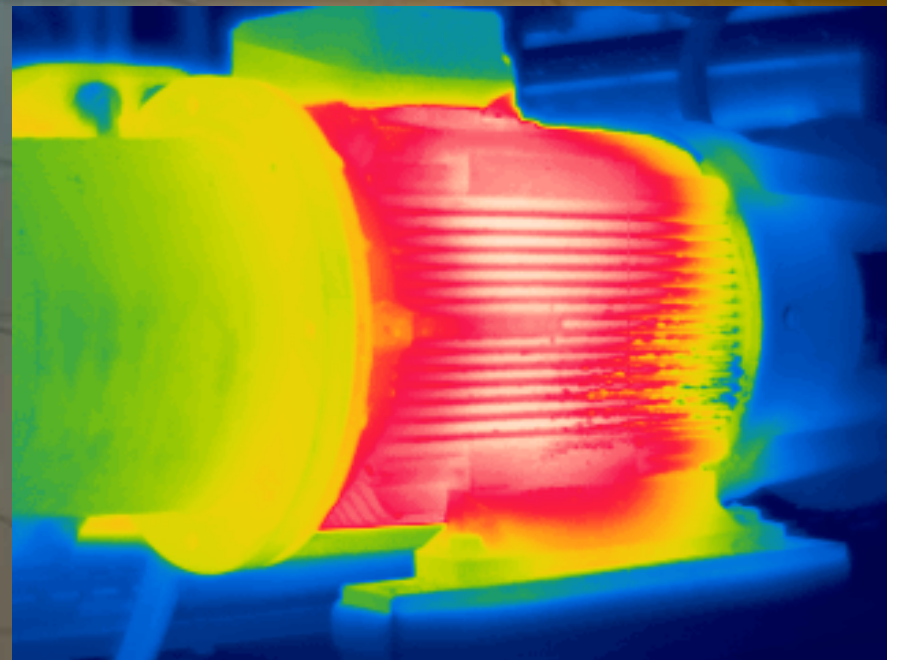
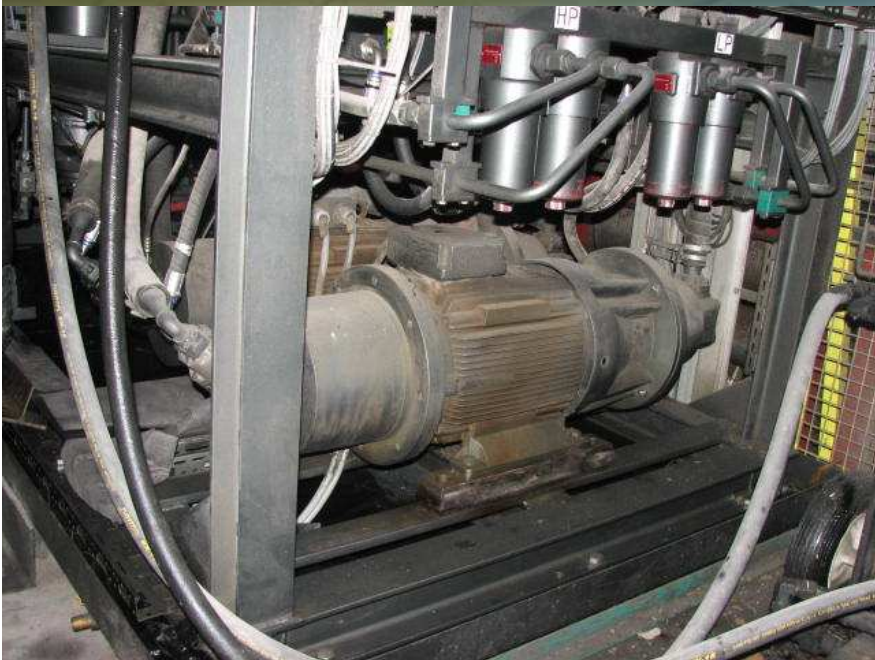
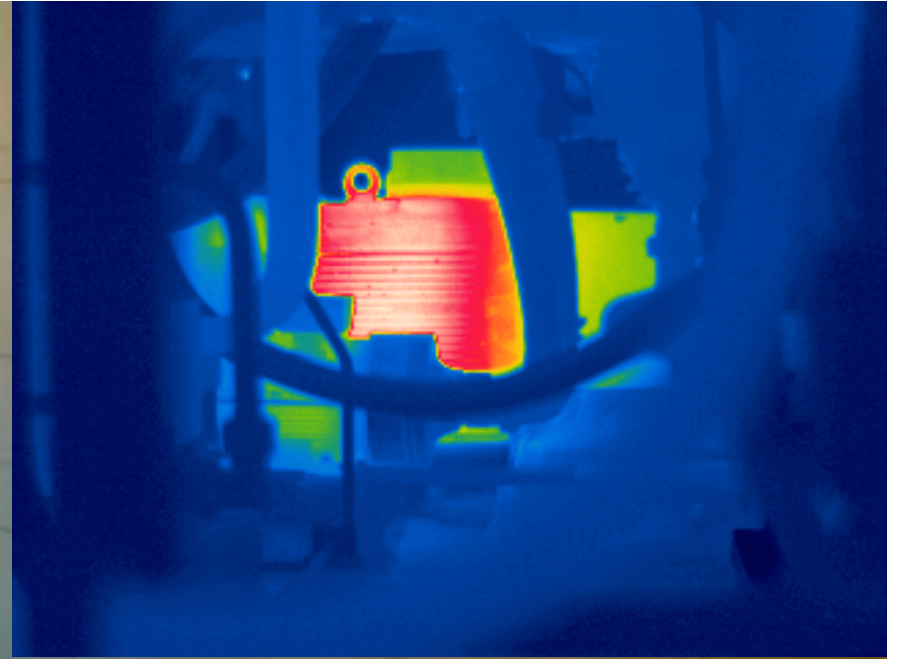




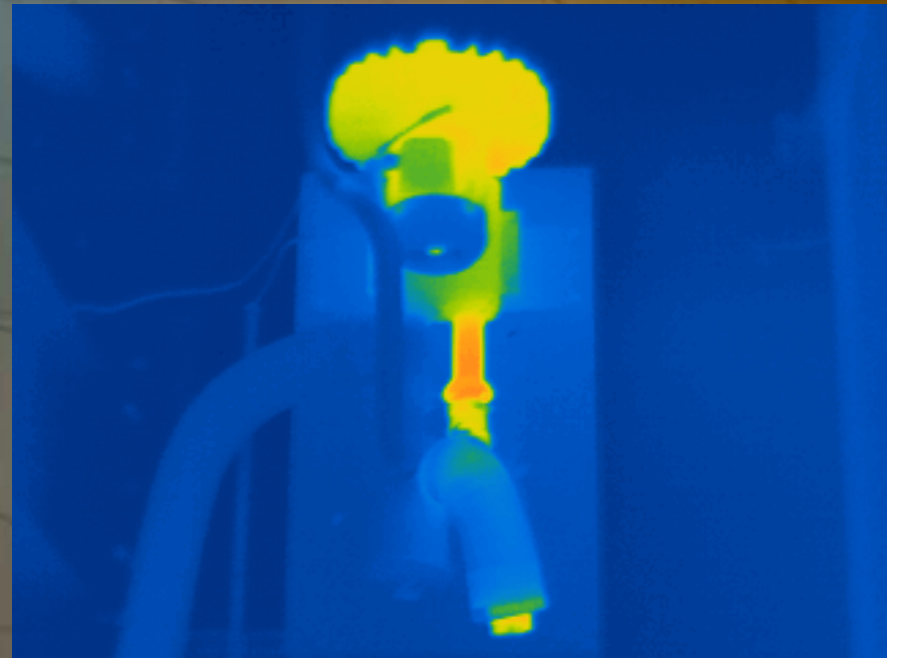
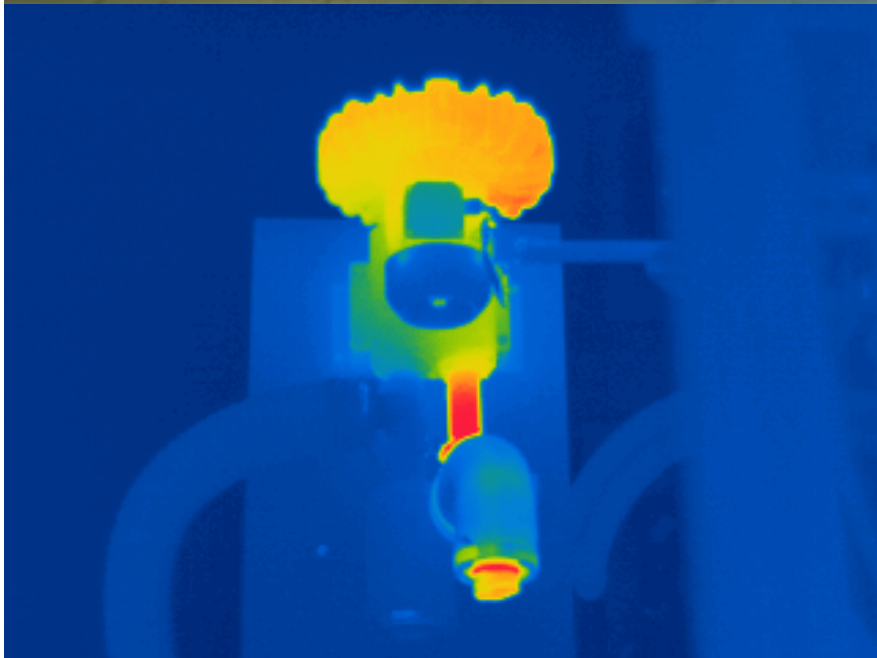
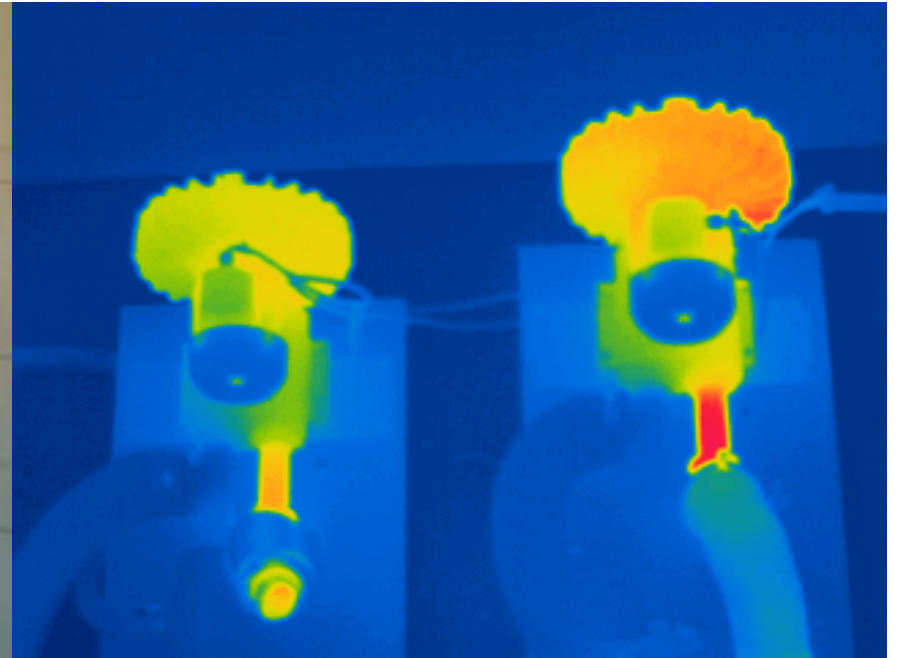
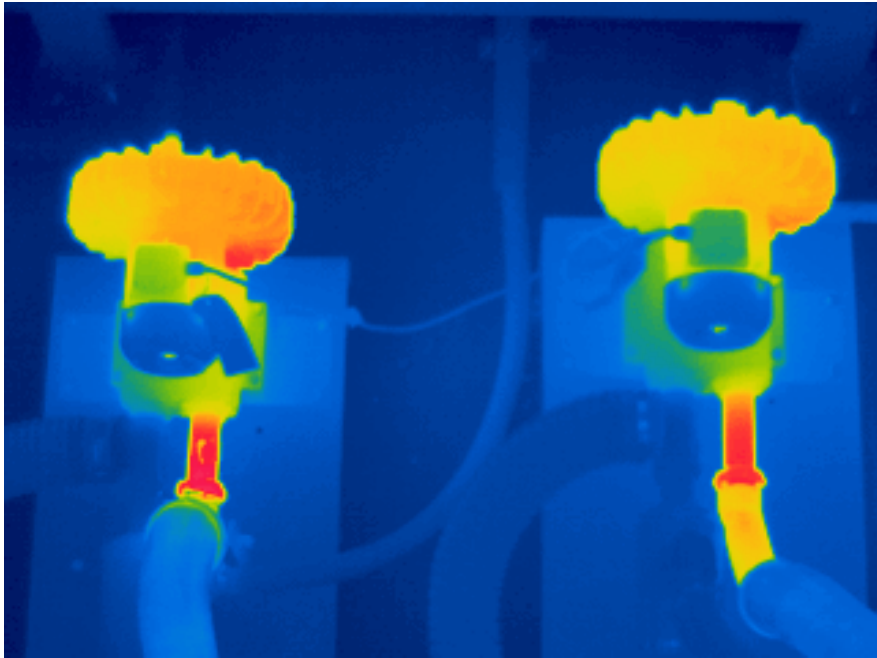




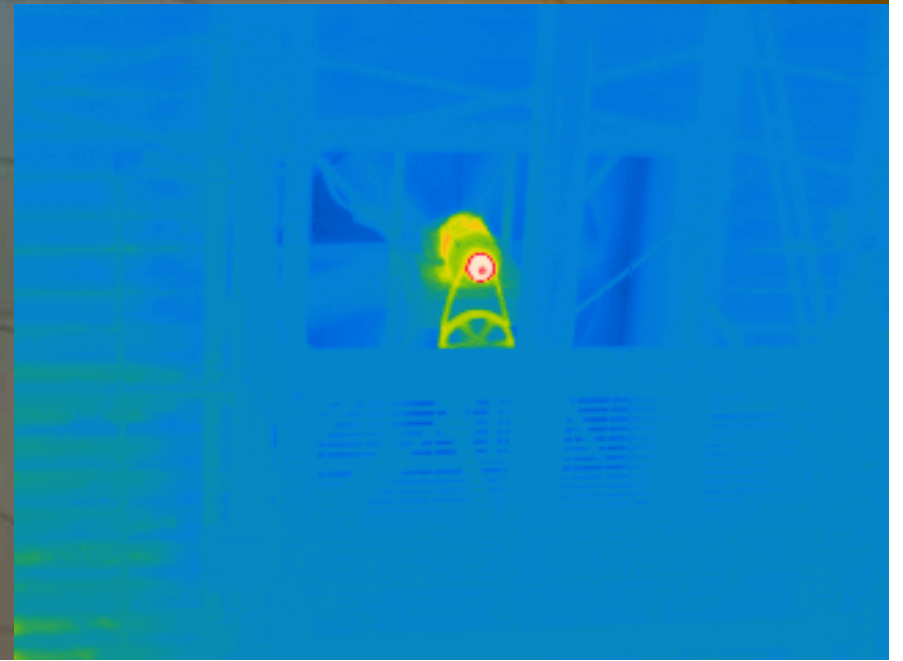
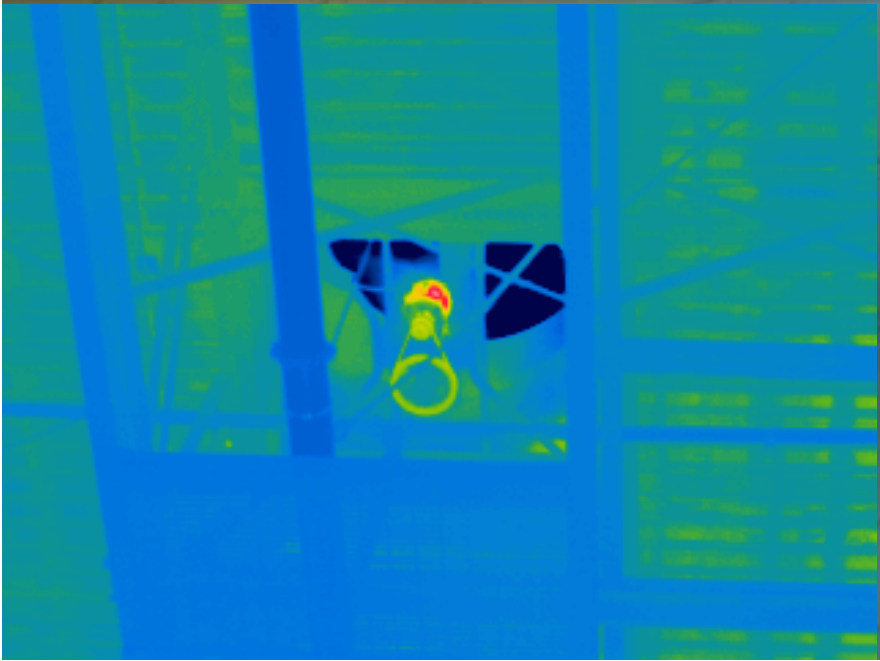
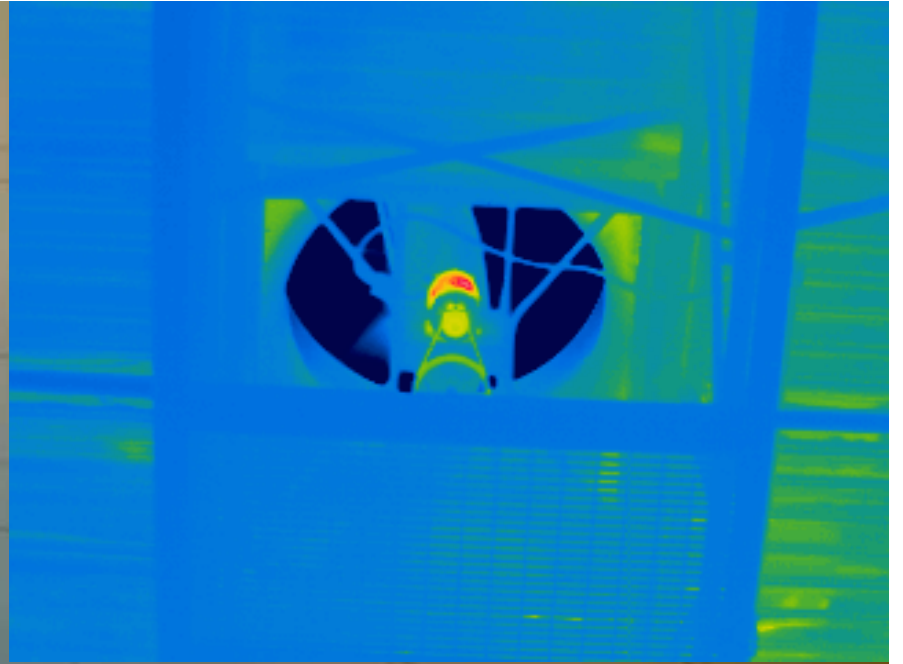
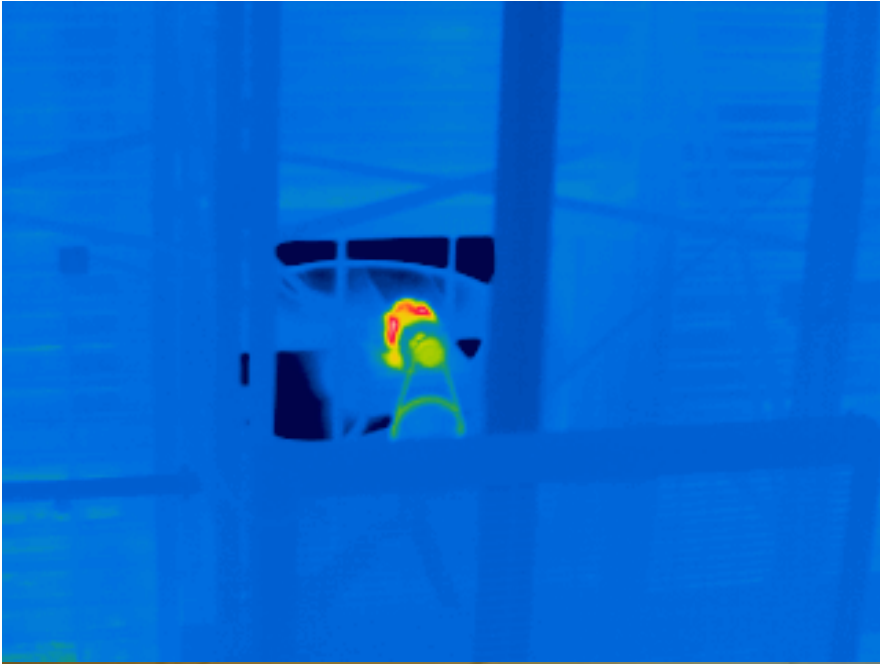


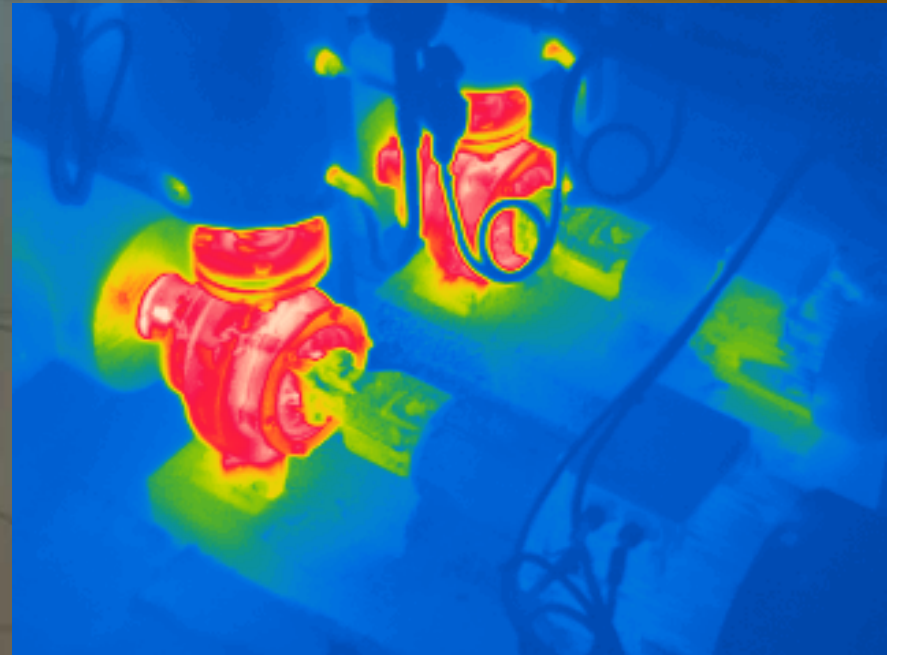
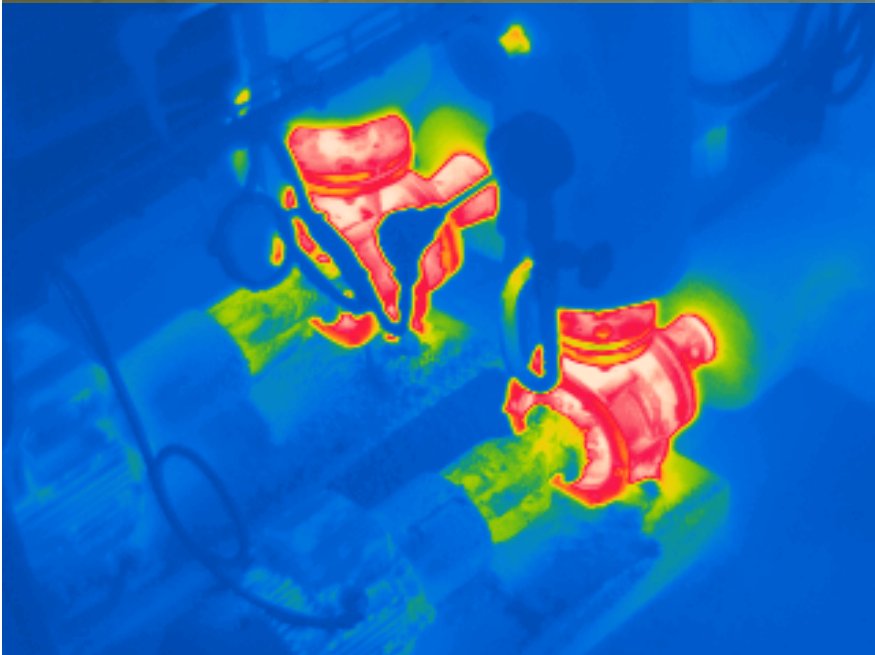
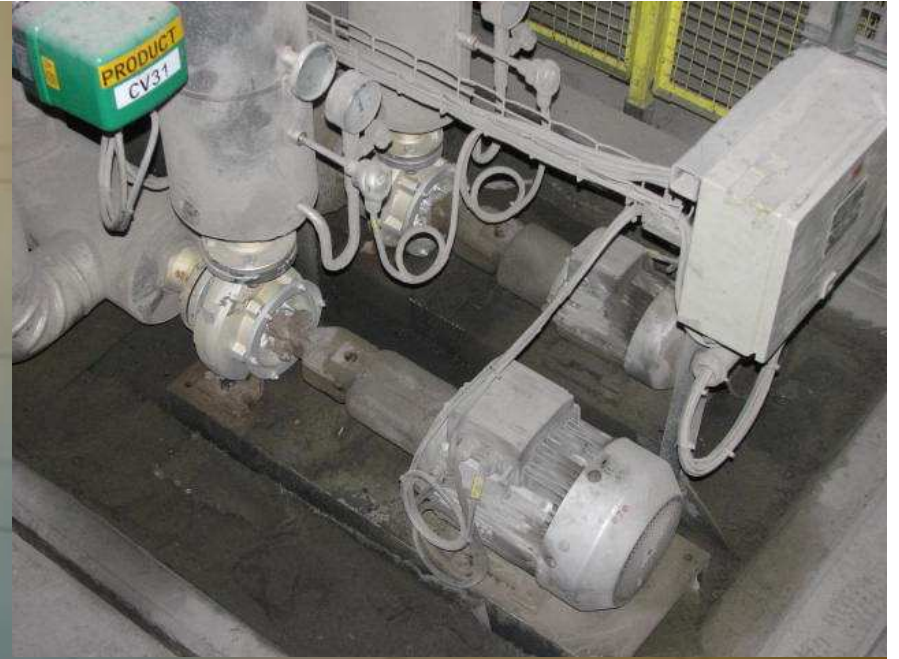


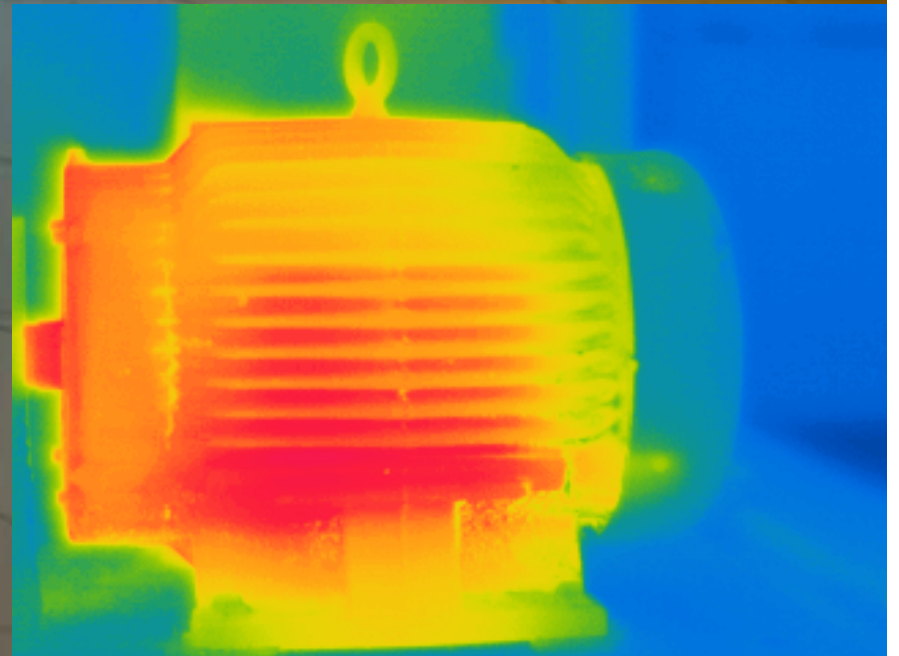
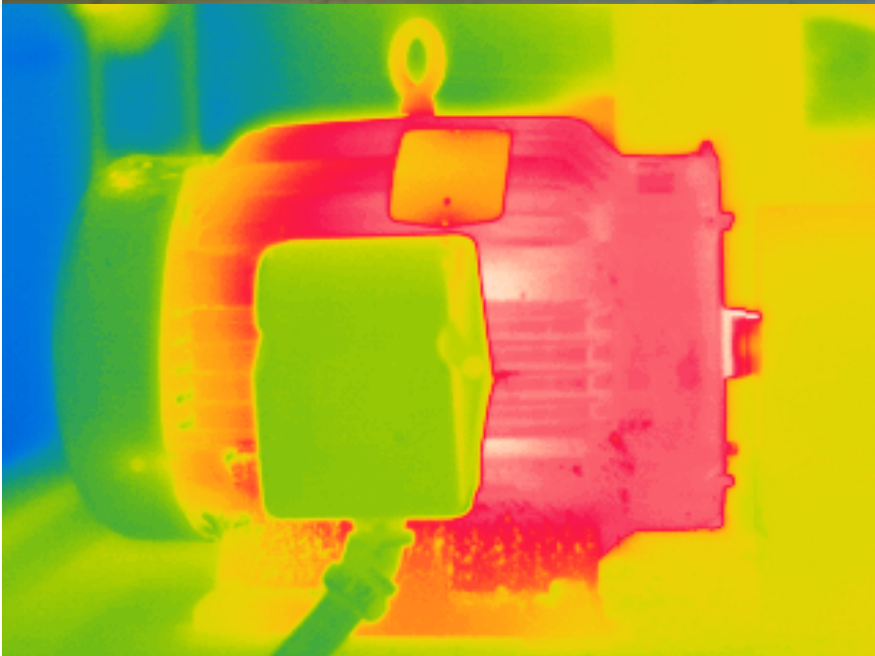
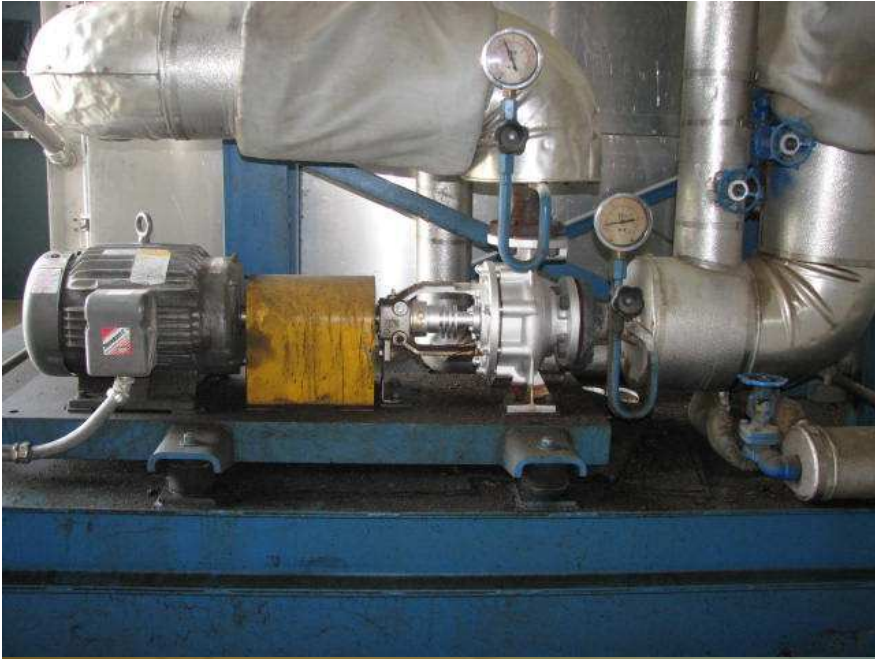


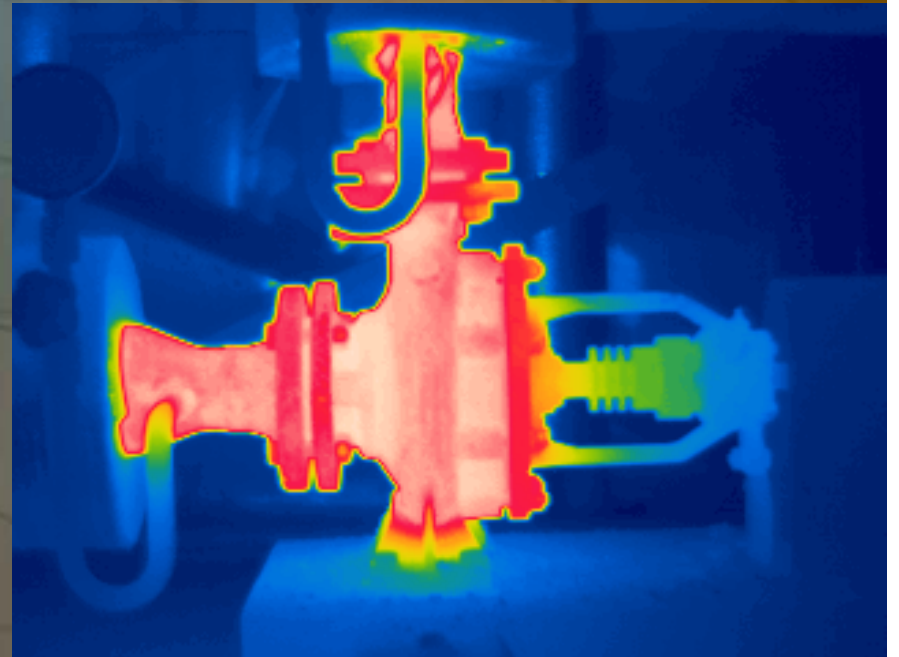
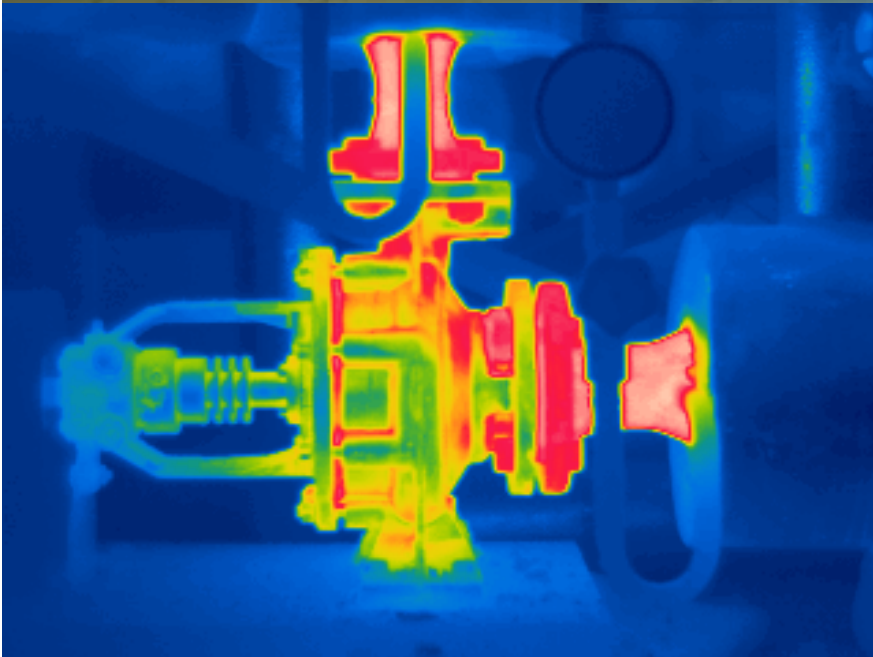
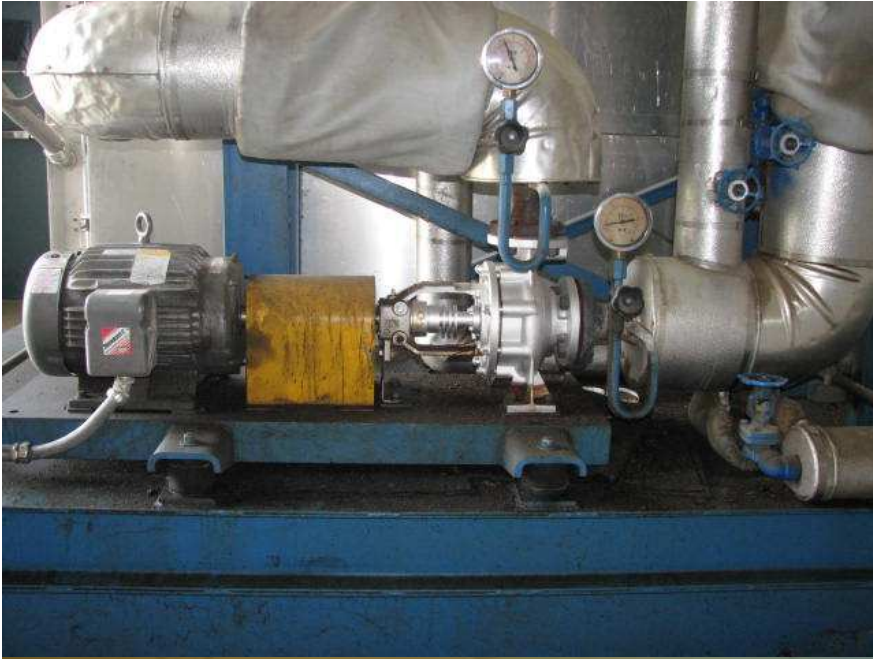












Electrical Room

Cuarto eléctrico

Not An Exit

No es salida

Electrical Room



SQUARE D
Schneider Electric



Terminal block with multiple rows of screw terminals and a small control panel below it.

Terminal block with multiple rows of screw terminals.

Terminal block with multiple rows of screw terminals.

Terminal block with multiple rows of screw terminals.

Vertical indicator light panel with several red and green lights.

Warning label with text in multiple languages.

Warning label

Warning label

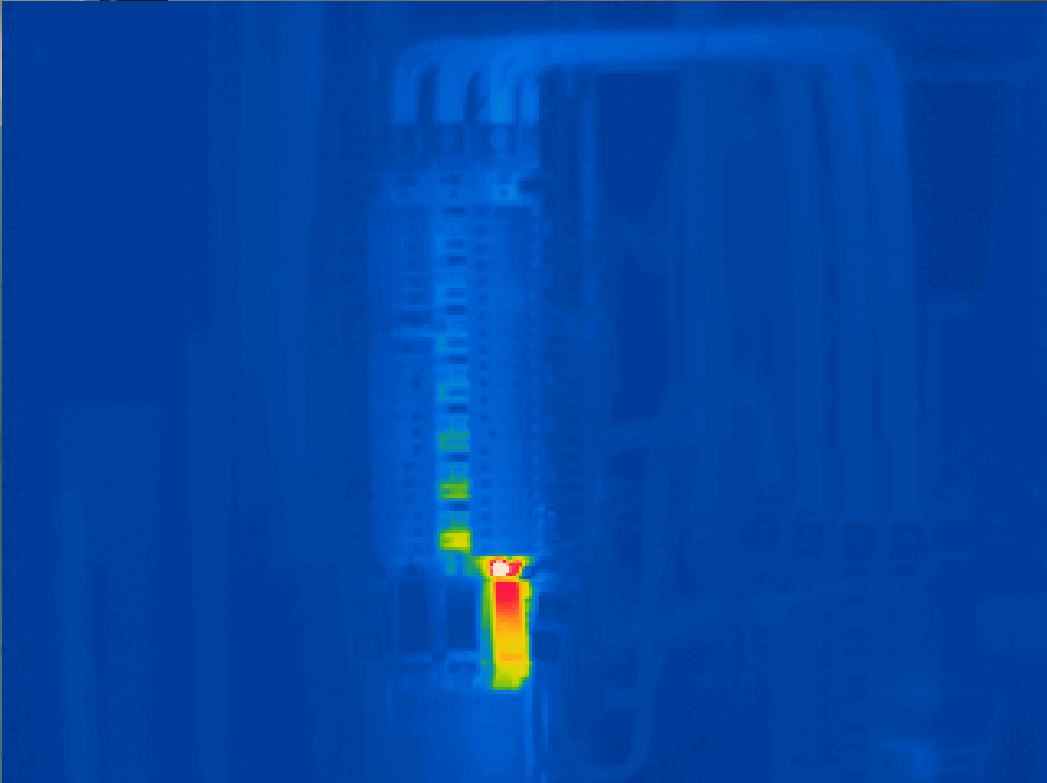
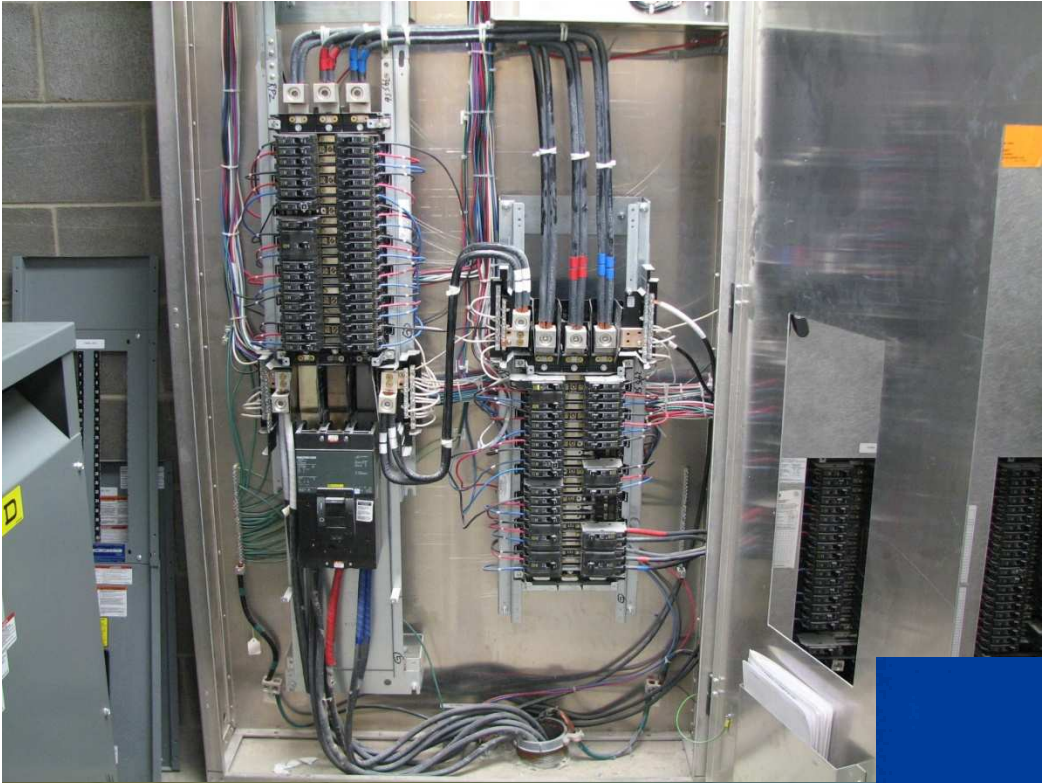
Warning label

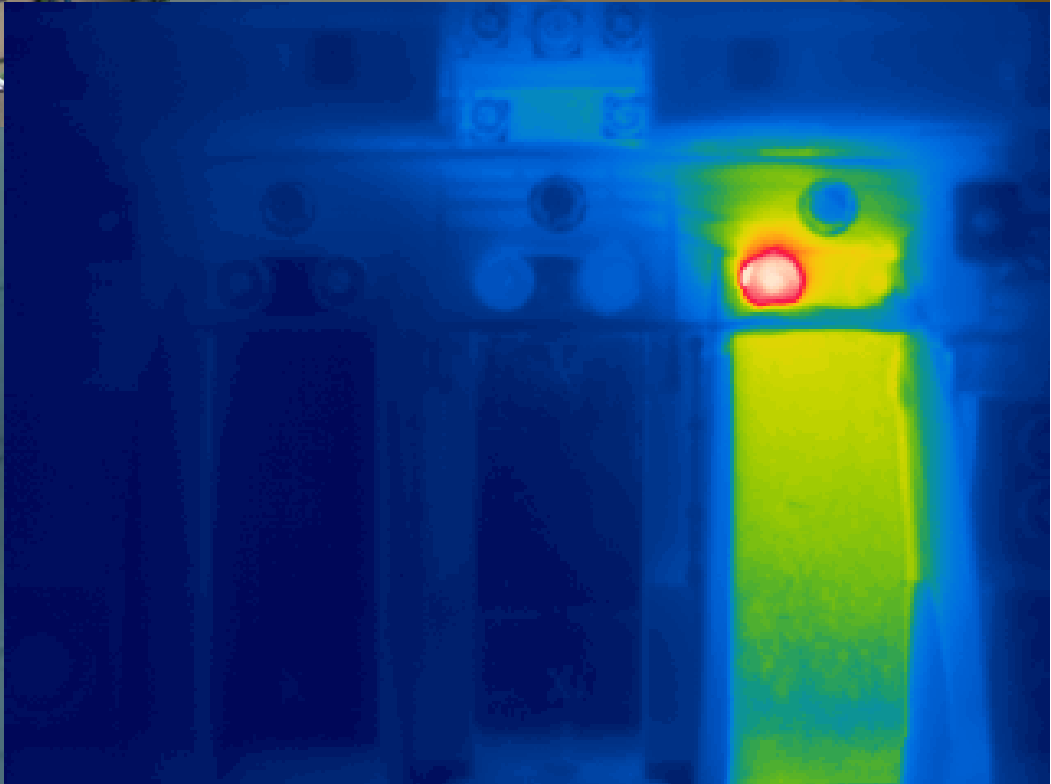
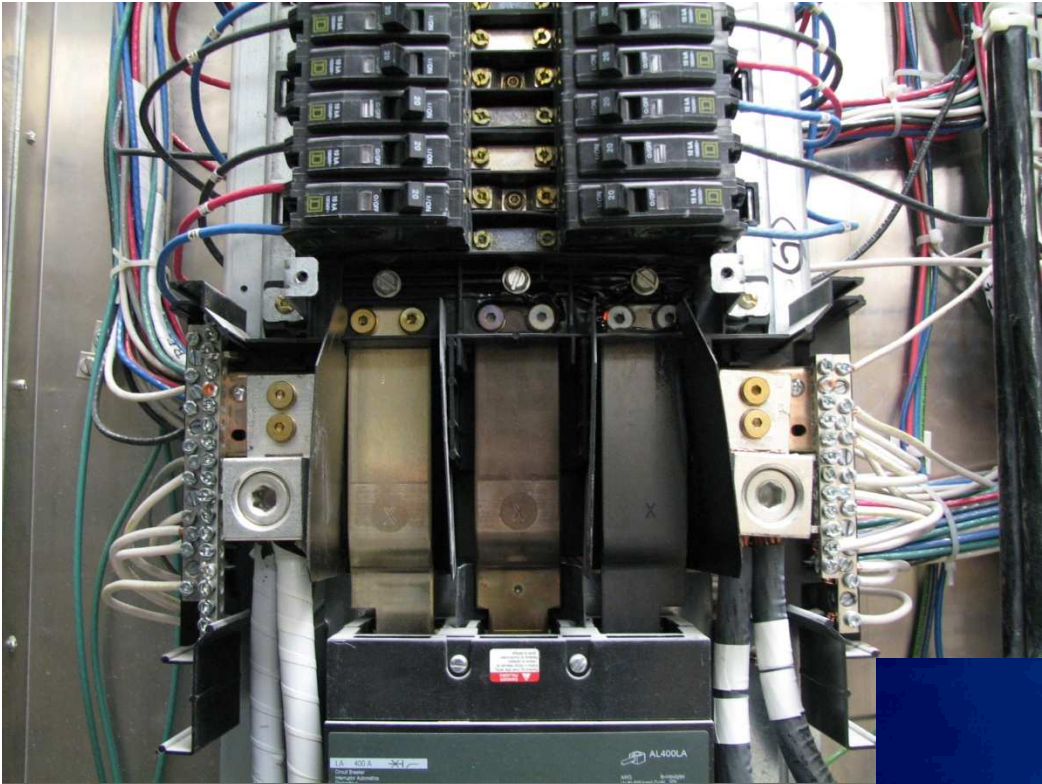
Warning label

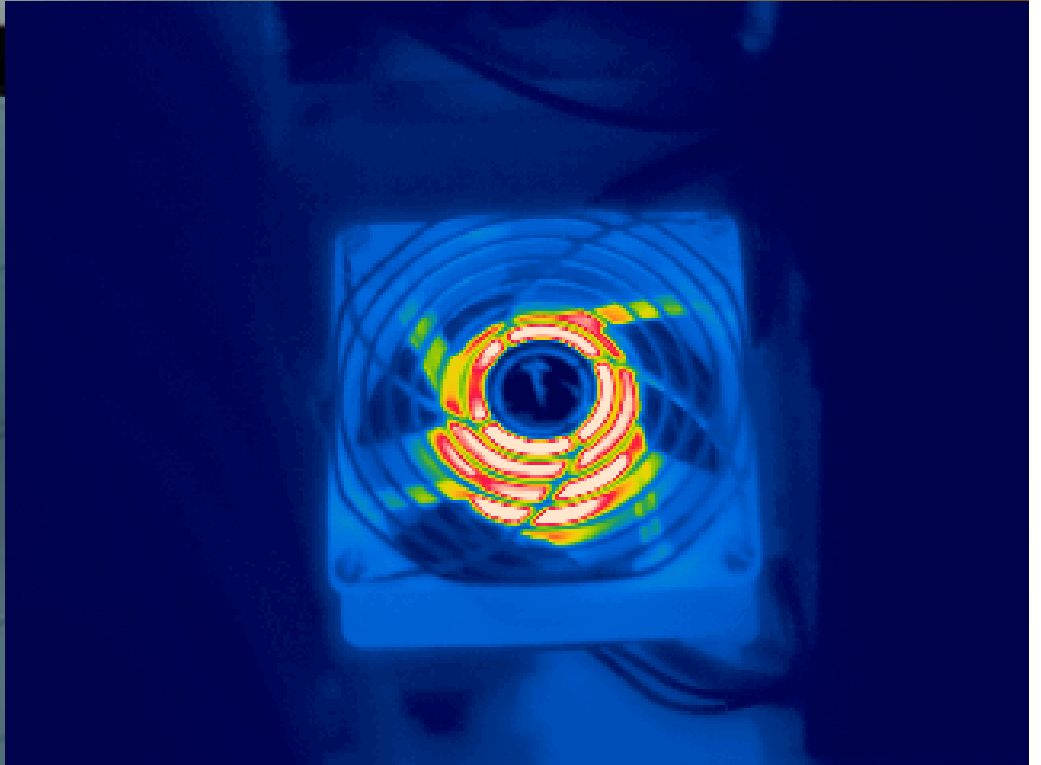
Warning label

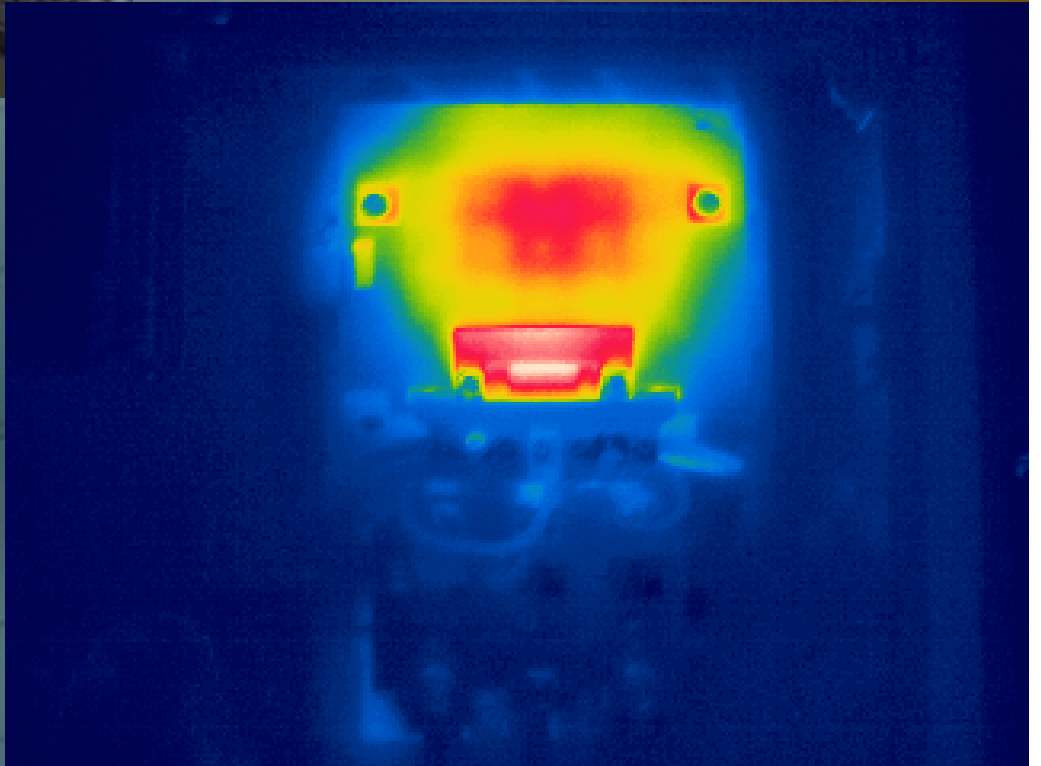
Warning label

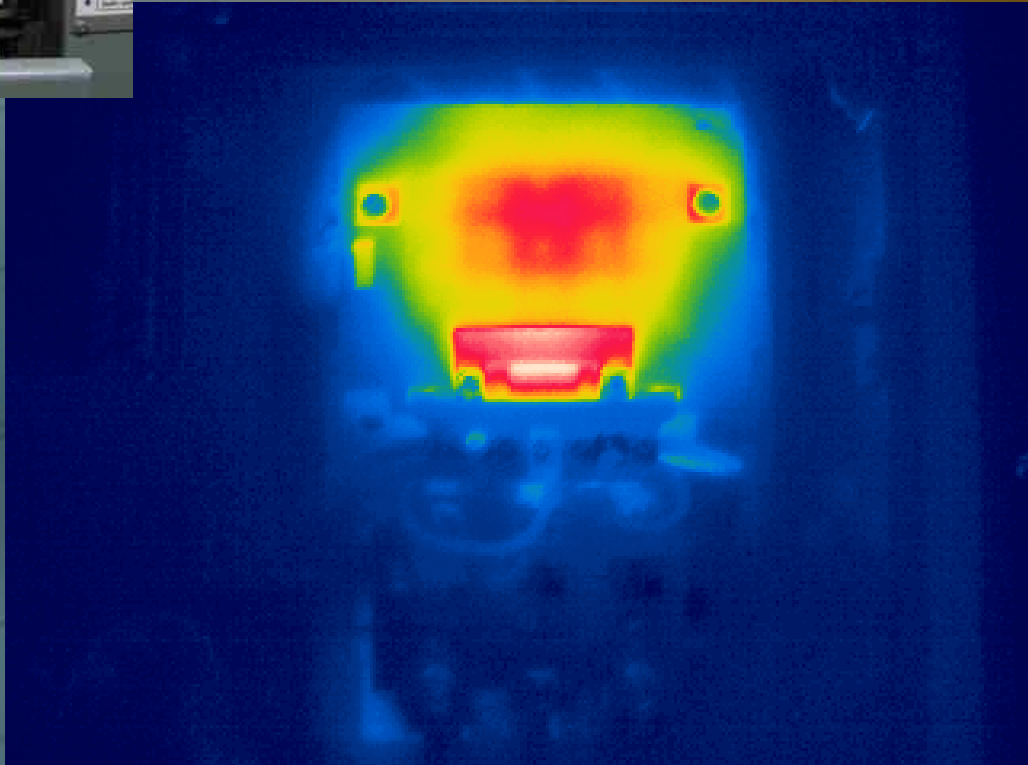
Warning label

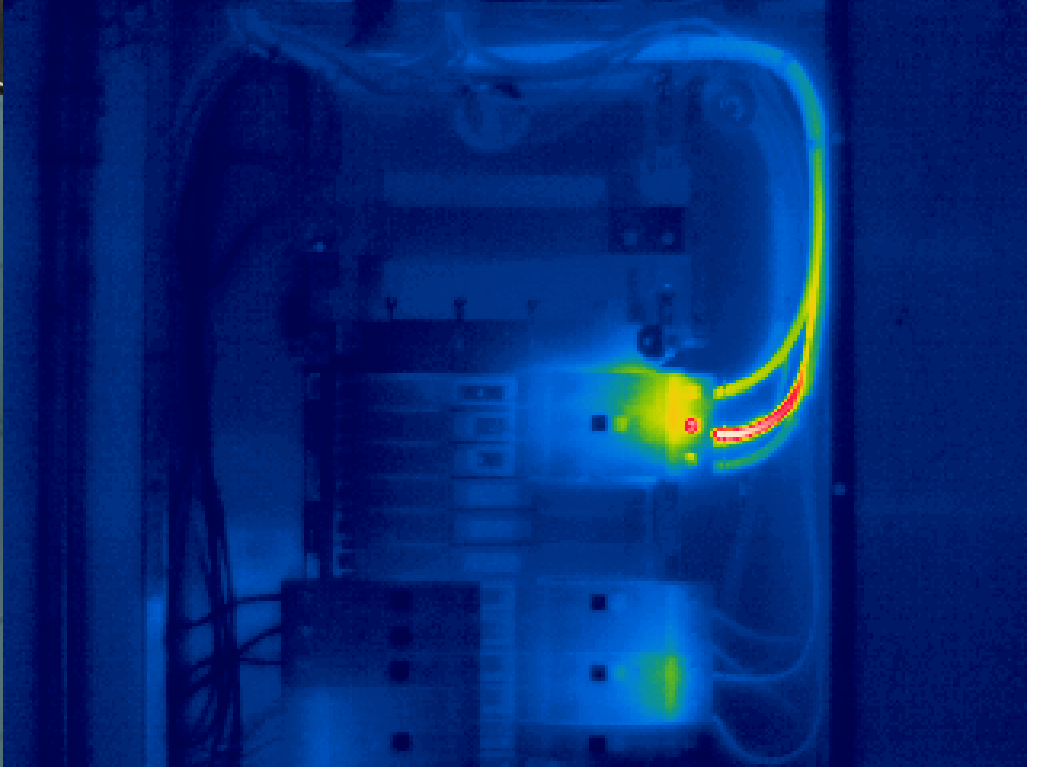
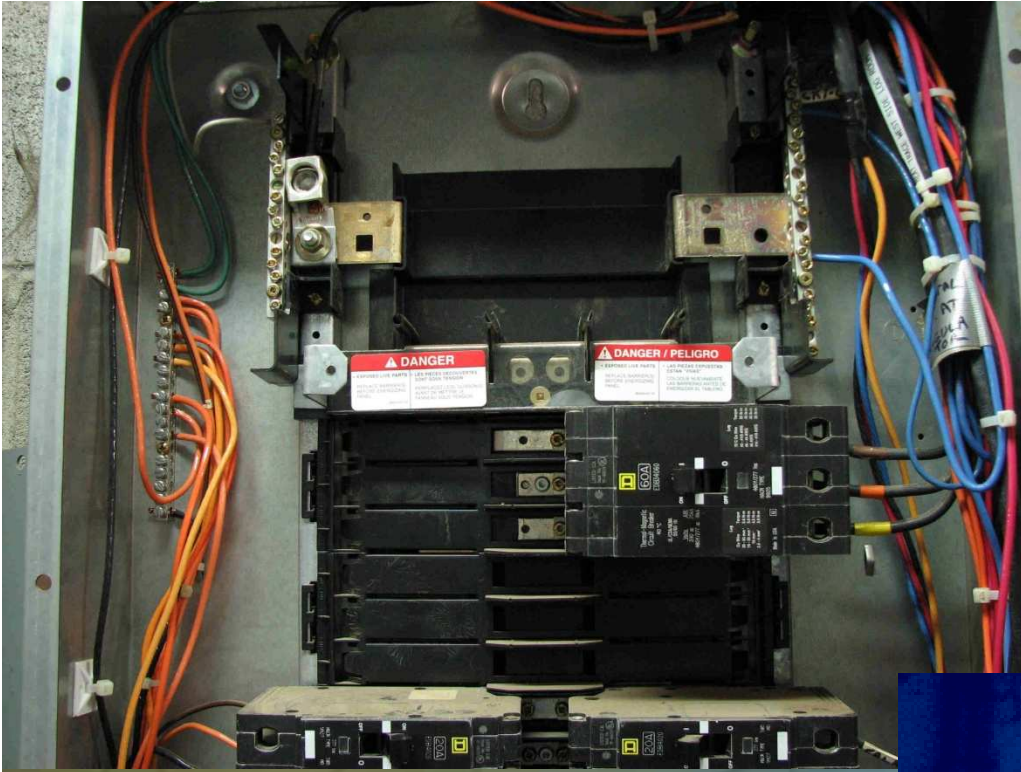


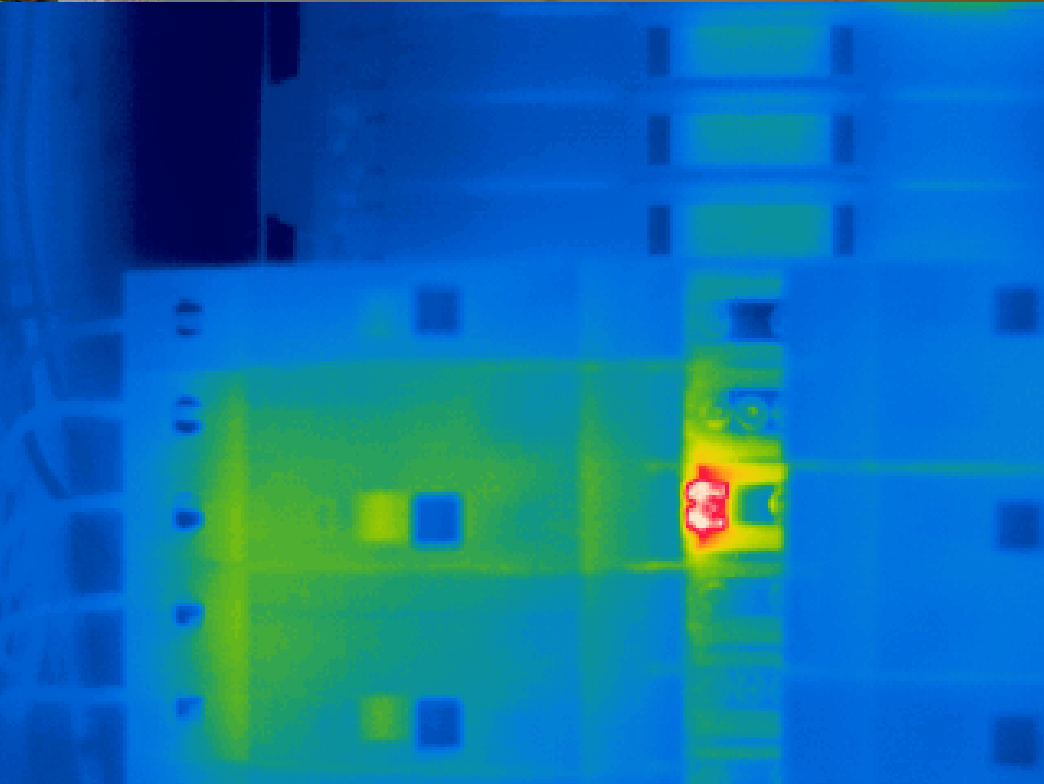
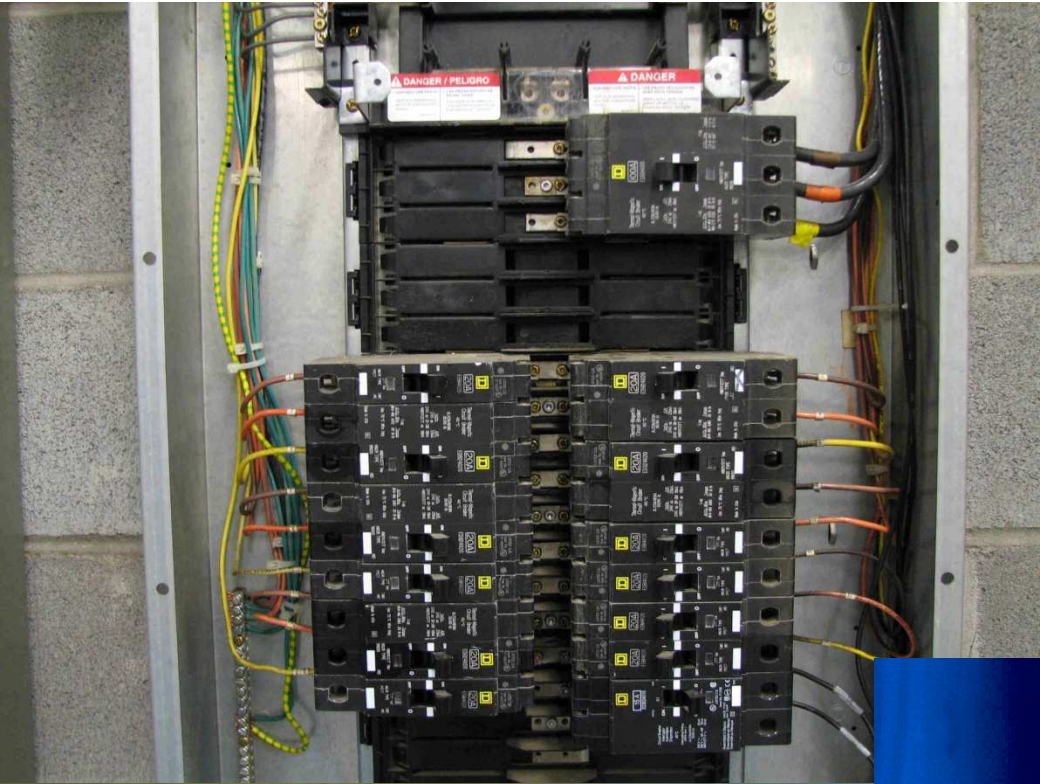












LINE LIGNE

UTION ATTENTION

¡CUIDADO AL TOCAR!
Riesgo de choque eléctrico o de quemaduras graves. Evite el contacto con los conductores de las partes energizadas de cualquier equipo eléctrico. Mantenga un espacio libre alrededor de los equipos eléctricos para permitir el acceso para el mantenimiento.

Riesgo de contaminación de la superficie.
Evite el contacto con la superficie de los componentes eléctricos. Evite el uso de herramientas metálicas que puedan dañar la superficie de los componentes eléctricos.

Riesgo de incendio.
Evite el uso de materiales inflamables o volátiles cerca de los componentes eléctricos. Evite el uso de herramientas que puedan generar chispas.

Riesgo de explosión.
Evite el uso de herramientas que puedan generar chispas cerca de los componentes eléctricos.

Riesgo de lesiones físicas.
Evite el uso de herramientas que puedan causar lesiones físicas.

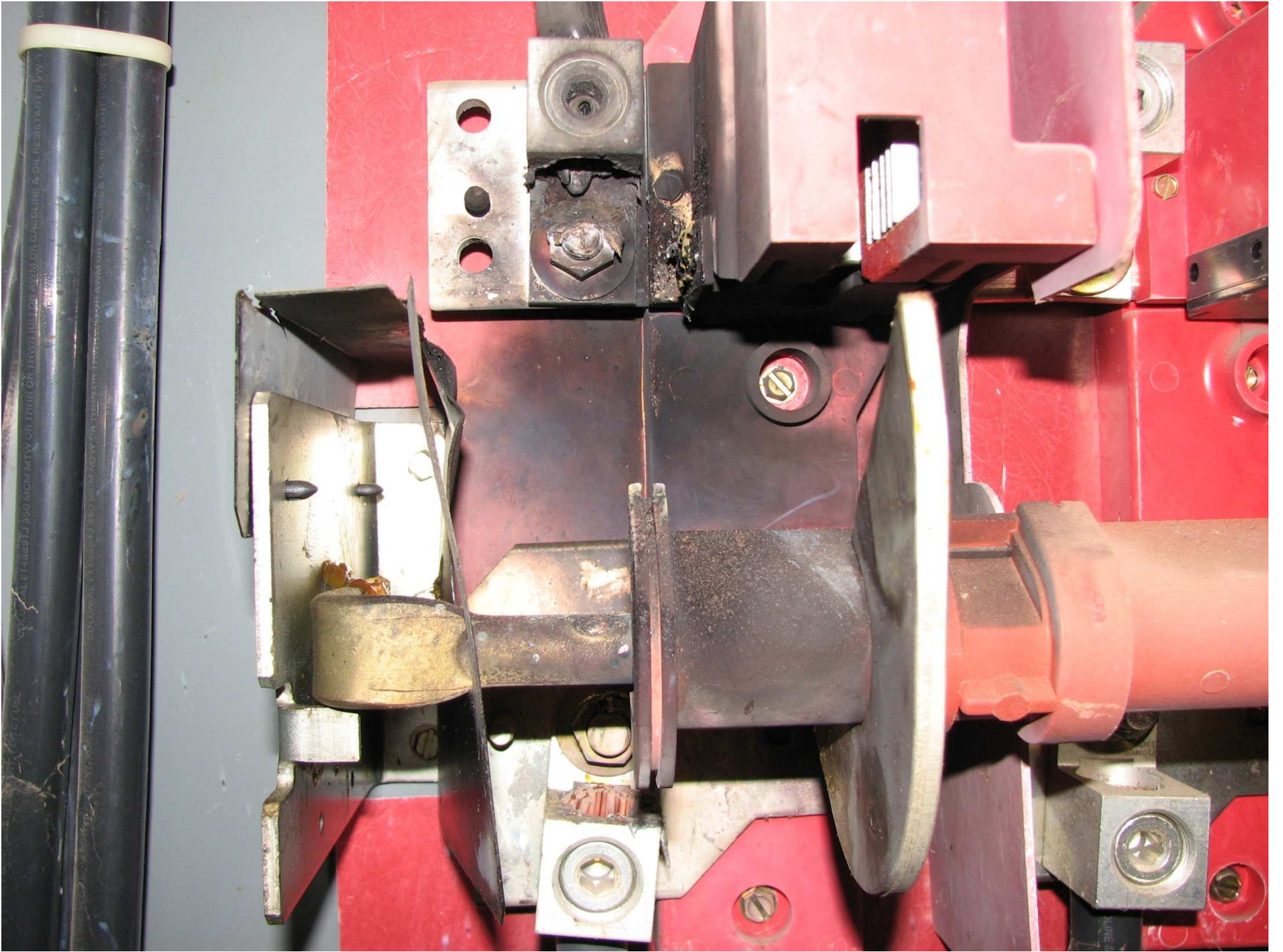
Riesgo de contaminación ambiental.
Evite el uso de herramientas que puedan causar contaminación ambiental.

Riesgo de contaminación de la superficie.
Evite el uso de herramientas que puedan dañar la superficie de los componentes eléctricos.

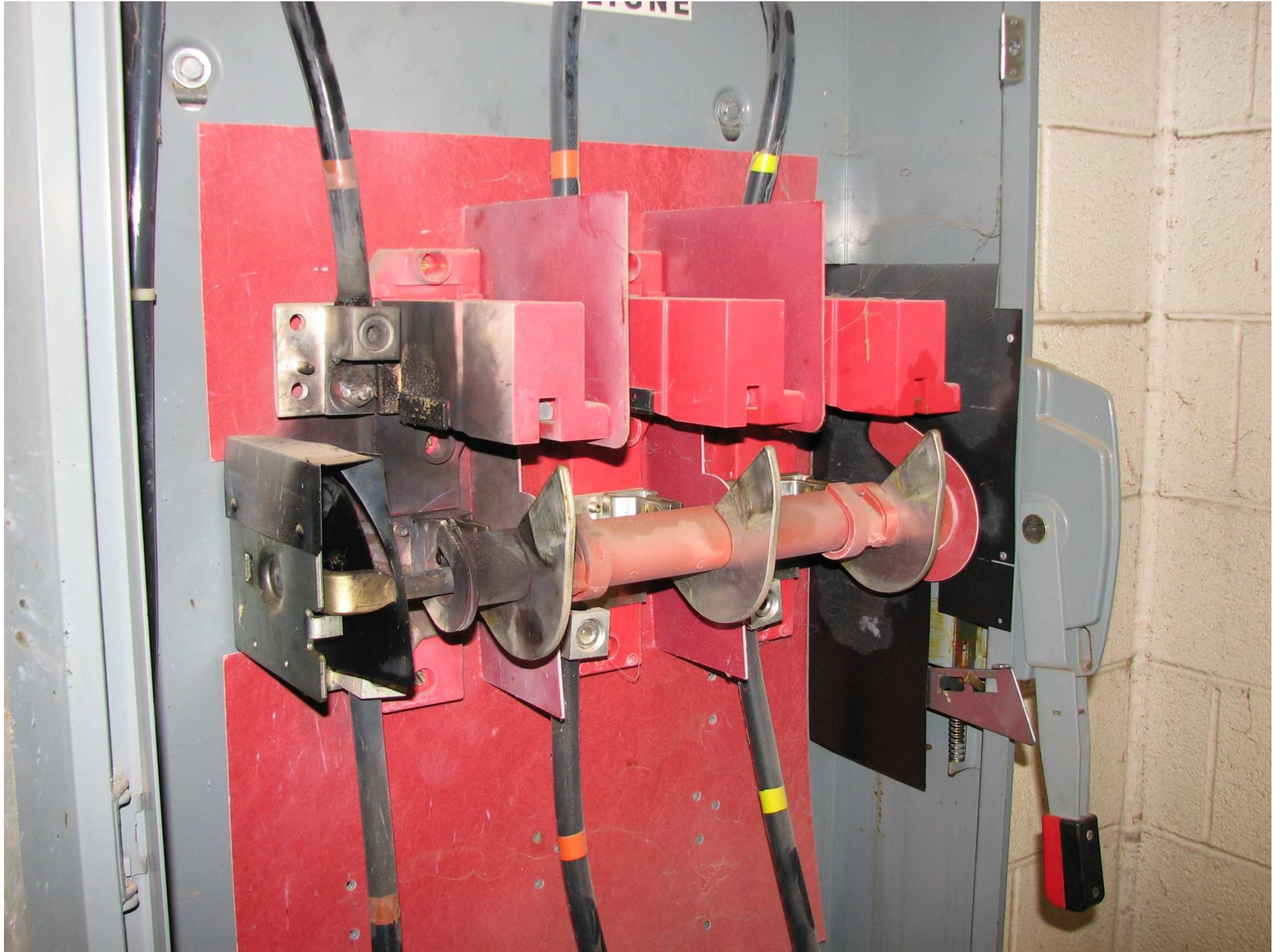
Riesgo de contaminación de la superficie.
Evite el uso de herramientas que puedan dañar la superficie de los componentes eléctricos.

INGERO / PELIGRO
Evite el contacto con los componentes eléctricos. Evite el uso de herramientas que puedan causar lesiones físicas.

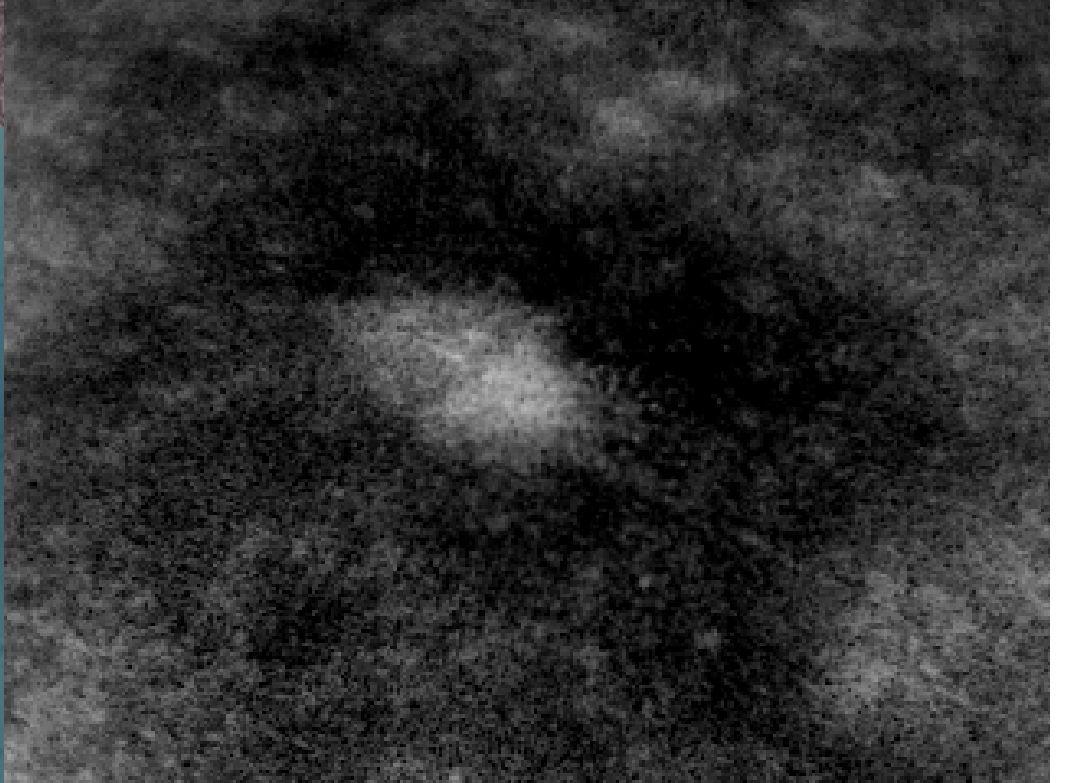


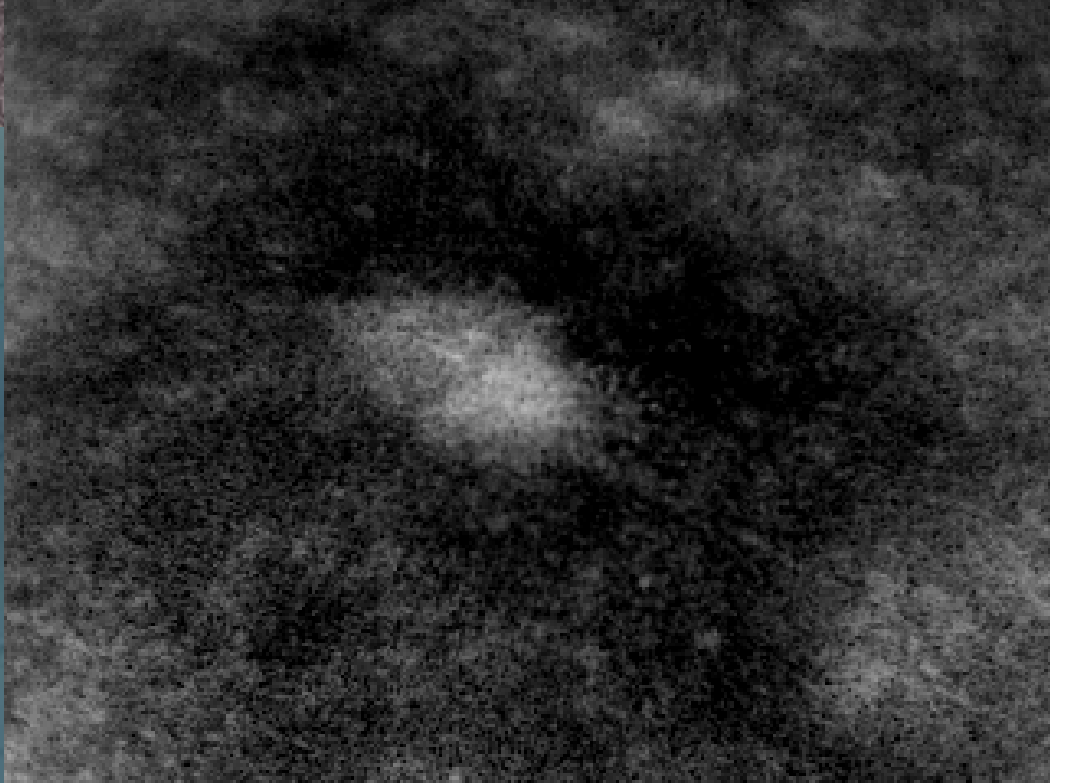






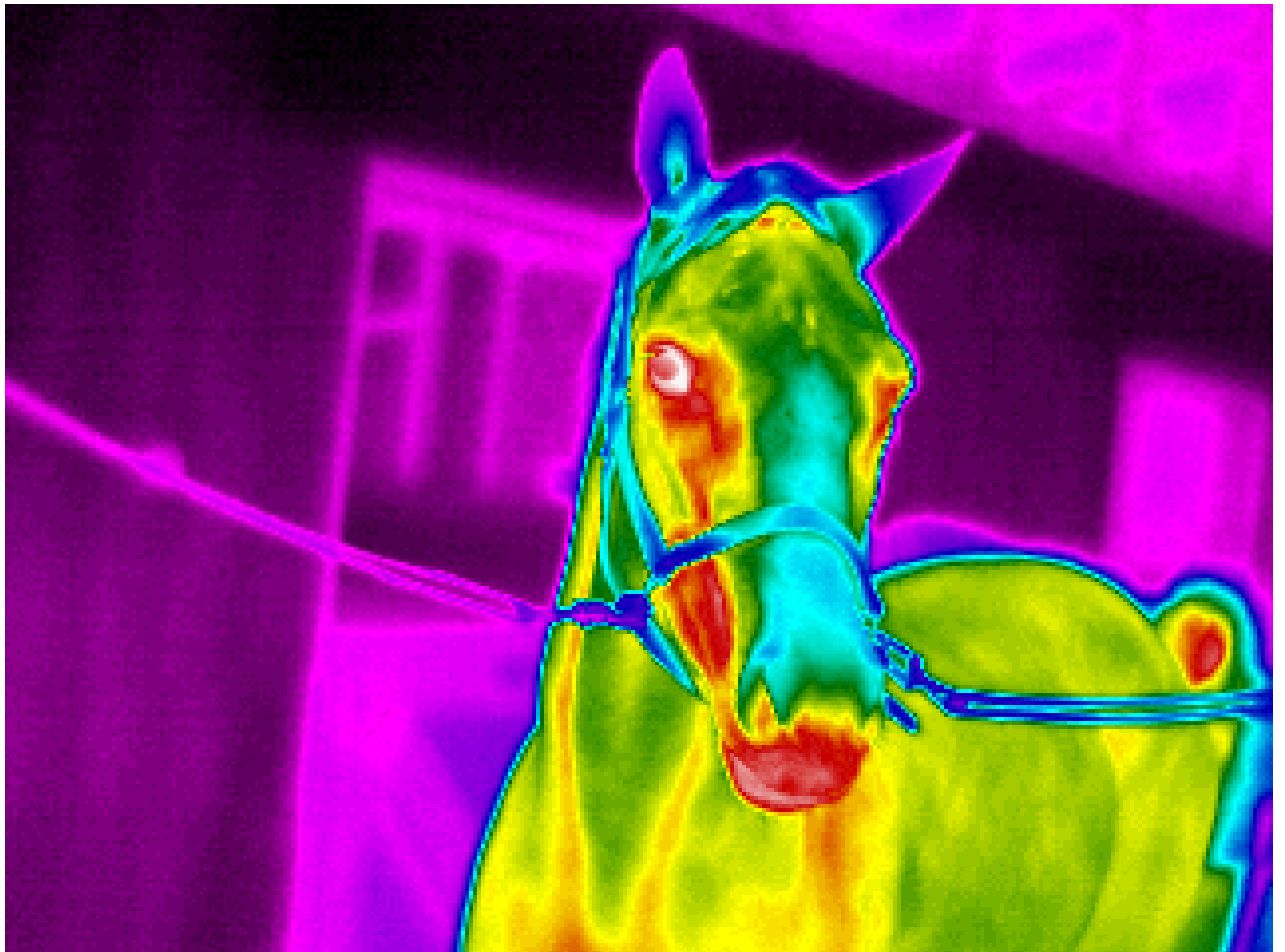


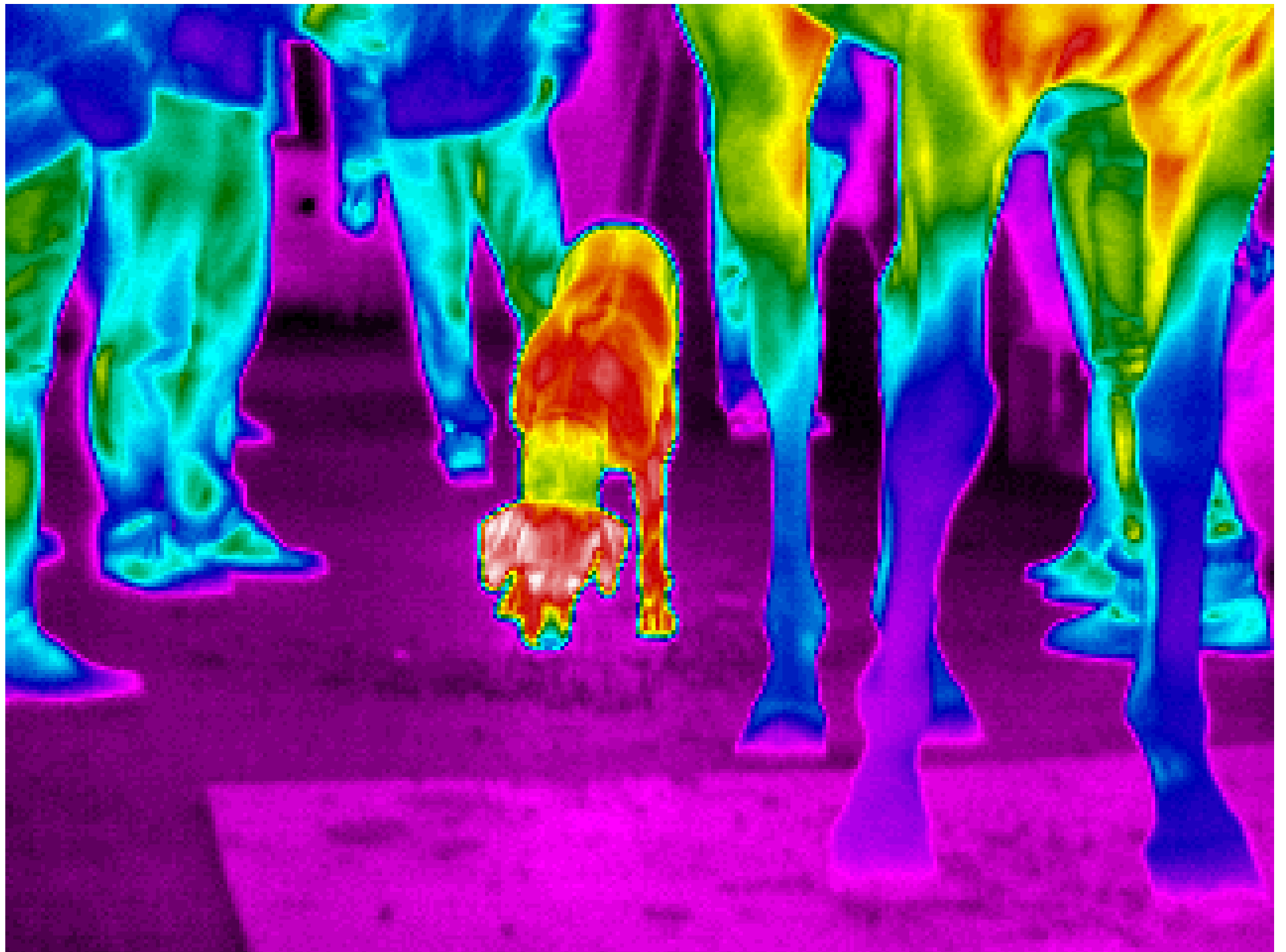














Questions???

