

Pleurothallis equipedites K.W. Holcomb, *sp. nov.*

Plant very small in size, epiphytic, caespitose, roots very slender.

Ramicauls 6 cm long, very slender, horizontal to pendant, enclosed by a thin tubular sheath below the middle and another at the base.

Leaf 7.5 cm long, 2.25 cm wide, coriaceous, rigid, narrowly ovate, cordate, the base sessile.

Inflorescence a single, successive, resupinate flower, 12 mm long, borne from a spathaceous bract at the base of the leaf.

Labellum (Lip) 3 mm long, 2 mm wide, amber colored, horseshoe-shaped, the base truncate, dorsal surface glabrous with a very deep cavity in the center, a defined channel down the center of the lower third, apex acute.

Dorsal Sepal 6 mm long, 6 mm wide, amber colored, glabrous, 5-veined, orbicular, concave, subacute.

Synsepal 6 mm long, 6 mm wide, amber colored, glabrous, 4-veined, orbicular, concave, subacute.

Petals 4 mm long, 1 mm wide, amber colored, glabrous, 1-veined, lanceolate, acute.

Column 2 mm long, 1 mm wide, bilobed, the anther and stigma ventral.

Etymology: From the Latin equus “horse” and pedites “foot”, a reference to the lip which looks like a horse’s hoof.

ECUADOR: Without collection data. *K.W. Holcomb 18306 (Holotype: GEO)*

Diagnosis: Vegetatively, *Pleurothallis equipedites* is indistinguishable from *Pleurothallis lymiana* (Luer 2006). However, there are significant differences in the floral morphology of the two species:

- The 12 mm long flowers of *P. equipedites* are significantly smaller than the 3-cm long flowers of *P. lymiana*.
- The flowers of *P. equipedites* are resupinate, whereas the flowers of *P. lymiana* are non-resupinate.
- Finally, *P. equipedites* is most-easily distinguished by its lip which looks like the sole of a horse’s hoof. The very wide margins are reminiscent of a horseshoe while the deep cavity in the center resembles the central sulcus.

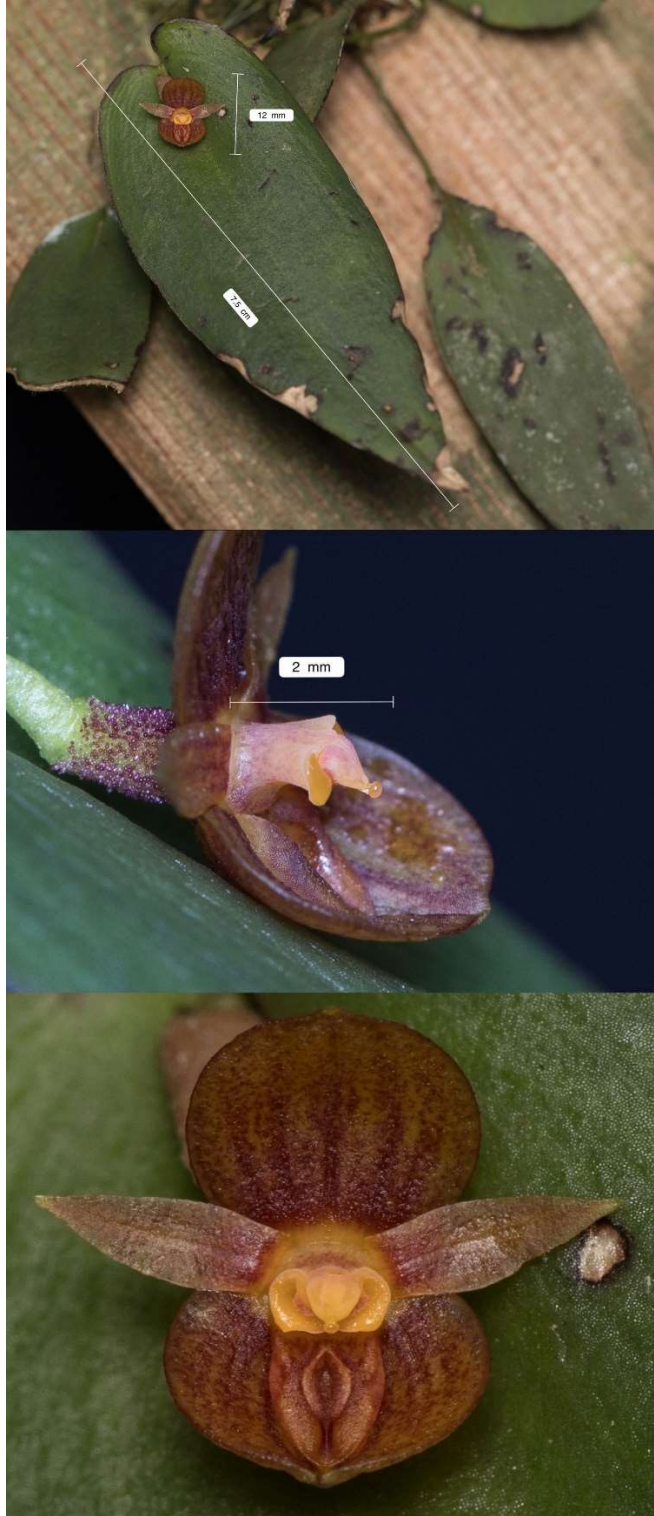


Fig. 1. *Pleurothallis equipedites*
Photos taken of the same plant used to prepare the holotype material (GEO 18306).



Fig. 2. *Pleurothallis equipedites* photographed on a roadside between Zamora and Loja, Ecuador, December 6, 2013.
Photo Credit: Ron Parsons

References

Luer, C. A. (2005). *Icones Pleurothallidarum XXVIII: A Reconsideration of Masdevallia Systematics of Specklinia and vegetatively similar taxa (Orchidaceae)*. Monographs in Systematic Botany from Missouri Botanical Garden 105, 1-274