

***Lepanthes minetii* K.W. Holcomb & W. Driessen, sp. nov.**

Plant very small, vigorous, floriferous, epiphytic, caespitose, roots very slender.

Ramicauls very slender, ascending to erect, 5-9 mm long, enclosed by two lepanthiform sheaths.

Leaf suberect to prostrate, thinly coriaceous, purple undersides, ovate, acute, 7 mm long, 7 mm wide.

Inflorescence a single, pendant, successive-flowering raceme to 5.5 cm long born from beneath the leaf.

Labellum (Lip) bright pink with yellow margins, bilaminate, the blades scurfy, reniform, acutely angled on the inner margin, enclosing the column, appendix oblong, pubescent.

Sepal membranous, ovate, acute 3 veined, 4.5 mm long, 3 mm wide, bright red suffused with yellow, margins yellow, denticulate.

Lateral Sepals connate at the base, ovate, oblique, narrowly acuminate at the tip, 4 mm long, 2.5 mm wide, 2 veined, bright red suffused with yellow, margins yellow, denticulate.

Petals bright fuchsia, scurfy, 2 mm long, 4 mm wide, transversely bilobed with an elongated, uncinuate intermediate lobe, the upper and lower lobes obliquely truncate.

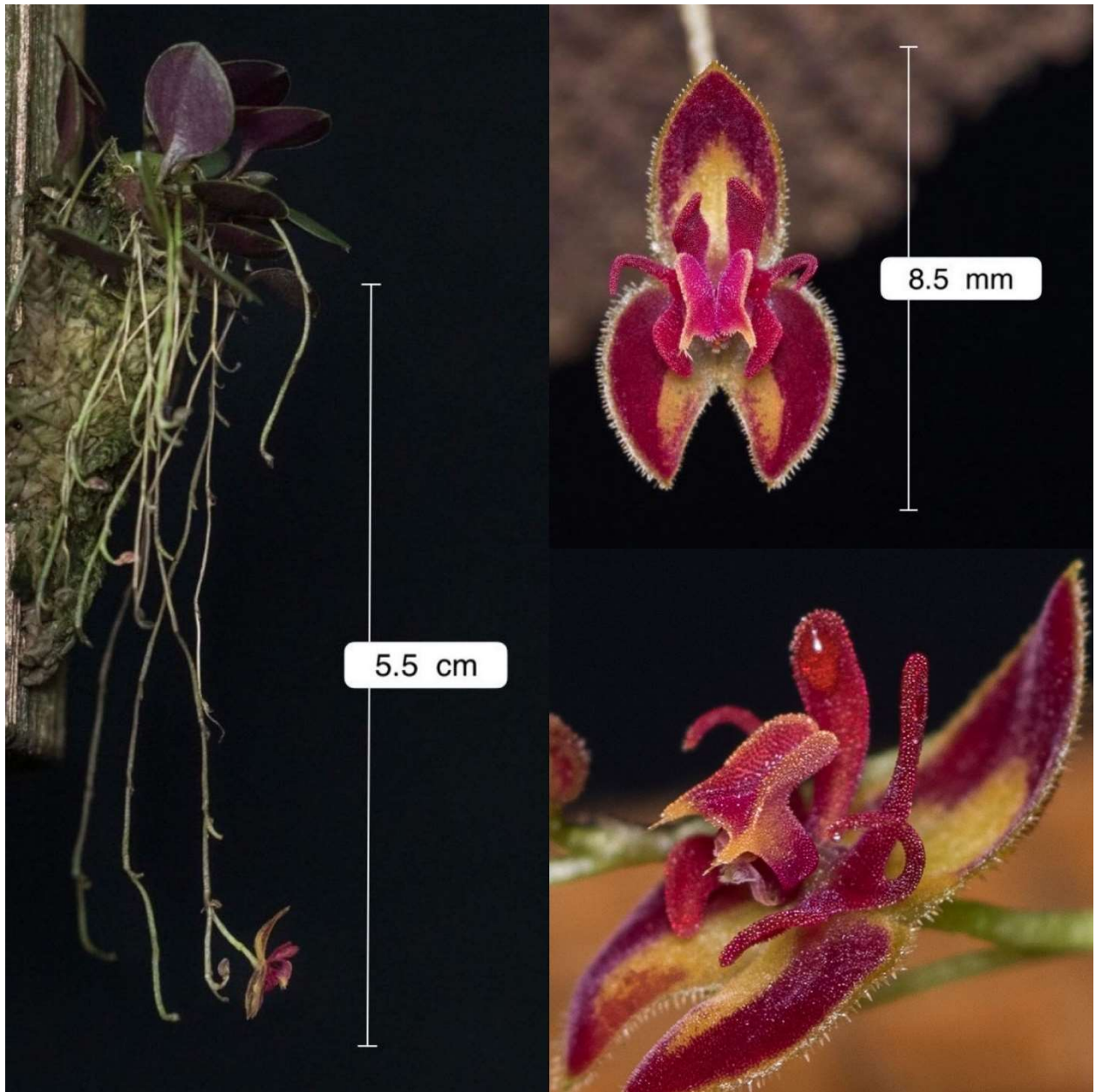
Column terete, 3 mm long, 2 mm wide, anther dorsal, stigma ventral.

Eponymy: Named in honor of Laurent Minet of Belgium, a pioneer in the field of *in vitro* propagation of orchids, particularly species in the genus *Lepanthes*.

ECUADOR: Without collection data. Obtained from Ecuagenera, Gualaceo, Ecuador as *Lepanthes* sp. "Red Limón".
K. W. Holcomb (Holotype: GEO 18286)

Distribution: The distribution of this species is currently unknown. To date, no observations that match the holotype have been found on flickr, iNaturalist, or elsewhere on the internet.

Diagnosis: *Lepanthes minetii* is unique in both floral morphology and plant growth habit. It is a floriferous species that can be easily distinguished by its brightly colored flowers that appear at the end of extremely long, pendant racemes. The bright pink, tentacle-like, tri-lobed petals have a scaly texture reminiscent of reptile skin. This species also has a somewhat creeping growth habit which is uncommon in the genus.



Lepanthes minetii.

Photos taken of the same plant used to prepare the holotype material.