

Beaufort Soil & Water Conservation District 2017 Annual Report

Serving Beaufort County for over 70 years

Mission

“To help people conserve, maintain and improve our natural resources and environment by promoting wise land use practices,



environmental education,



and technical assistance”



Board of Commissioners:

Alan A. Ulmer, Jr., Chair
Claude McLeod, Vice Chair
Denise Parsick, Sec/Treasurer
Luke Inabinett, Member
Don Sanders, Member
Art Holland, Associate
Carol Murphy, Associate
Howard Heckrotte, Associate

District Staff Members:

Shelby Berry, District Manager
Pam Floyd, Education Coordinator
Debby Way, Education Specialist
Phyllis Atkins, Community
Health, Safety, & Trails

We've Moved! New location & New Phone #

We are now at Crystal Lake Park, a Beaufort County passive park at 124 Lady's Island Drive. Our new phone is 843-255-7306. Come see the park and our new office.



The Conservation Partnership includes:

USDA-NRCS, Natural Resources Conservation Service:

Fred Tritapoe, Acting District Conservationist

SC Dep. of Natural Resources, Land Conservation Division:

Marc Cribb, Program Director for Conservation Districts

Professional Memberships:

SCACD—SC Association of Conservation Districts

NACD— National Association of Conservation Districts

SCCDEA—SC Conservation District Employees Association

Beaufort Soil & Water Conservation District 124 Lady's Island Dr. Beaufort SC 29907
Mailing PO Box 70, Port Royal, SC 29935 Tel: 843-255-7306
Email: bswcd@islc.net www.beaufortconservationdistrict.org



Natural Resources Conservation Service

On the Ground Conservation Practices in Beaufort County

NRCS and Beaufort Conservation District provided technical support to agricultural landowners in Beaufort County, approving \$337,700 and paying \$129,000 in cost share. EQIP, Environmental Quality Incentives Program, encourages Best Management Practices (BMP's) that help keep our water clean and make the land more sustainable by :

- Reducing sedimentation into nearby waters
- Offering protection for threatened and endangered species
- Fighting invasive species
- Keeping livestock out of area waters

Priority questions for cost share are discussed and approved by the Local Work Group, annually. The following BMP's were installed voluntarily by landowners through EQIP Cost share.

PRESCRIBED BURNING

Reduces Wildfires & Enhances Wildlife Habitats



TREE SITE PREP

Prepare Land to Plant Longleaf Pine



DRIP IRRIGATION

Conserves Water & Reduces Energy Use



RICE TRUNK

Improves Wetland & Wildlife Habitat



CROP ROTATION

Improves Soil Health & Reduces Crop Diseases



SEASONAL HIGH TUNNEL

Extends the Growing Season



USDA-NRCS Field Office—Serving Beaufort & Jasper Counties—Fred Tritapoe, District Conservationist
 7554 W. Main Street, Room 128 Mailing: PO Box 190 Ridgeland, SC 29936
 Phone 843-726-8148 Fax 843-726-5763

NRCS EWP Program and Hurricane Matthew

USDA-NRCS’s EWP, Emergency Watershed Protection Program, obligated approximately \$2.1 million for Town of Hilton Head and Beaufort County to help pay for clean up of critical drainage areas after the massive debris from Hurricane Matthew in October 2016. This program was designed to provide relief after a natural disaster to reduce the threat of potential flooding and to protect infrastructure.



Diane Leone, retired NRCS District Conservationist, with husband Dick Yetter

After more than 10 years as the Beaufort & Jasper Counties District Conservationist, **Diane Leone** retired in April of 2017. The Districts hosted a drop-in at the Port Royal Sound Maritime Center with colleagues and landowners to celebrate Ms. Leone’s accomplishments and wish her well in retirement. Ms. Leone still resides in the Beaufort area when not traveling.

Welcome to Acting District Conservationist, **Fred Tritapoe**. Mr. Tritapoe is the District Conservationist for Colleton County with headquarters at the Walterboro NRCS Service Center. He has been working hard to cover his county along with Beaufort and Jasper Counties. He has also gotten assistance from other staff and USDA-NRCS service centers. We appreciate all his support for Beaufort County as well as his expertise from his many years of experience.



SC Department of Natural Resources

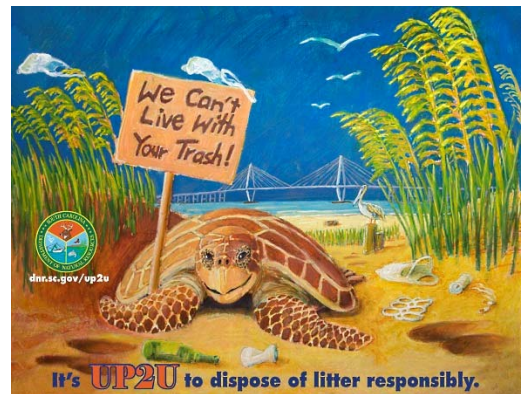
Beaufort SWCD continues its strong partnership with the SC Department of Natural Resources to stay connected with the state wide activities & education events, SWCD laws & procedures, and staff training. DNR publications, fishing and hunting information and handouts are available at our office. <http://www.dnr.sc.gov/>

SCDNR ACE Basin National Estuarine Research Reserve (NERR)

continues to provide support to Beaufort County. The ACE Basin NERR scientists and staff provide education reach and volunteer opportunities to area students and adults. <http://www.dnr.sc.gov/marine/NERR/> We especially appreciate our local DNR experts, especially Dr. Al Segars, who presents programs to both kids and adults and keep us informed on topics of marine mammals, alligators, and water quality issues.



Ashley Shaw, SCDNR, shows the multiple rows of replacement teeth in a large shark jaw.



SC DNR outreach flyer on their UP2U (Up to You) program on litter.

Education: This past year Beaufort SWCD presented **280** classroom & festival outreach programs reaching over **7232** students and adults.

Festivals: Beaufort SWCD planned and presented Earth Day at the Port Royal Farmers Market. District staff works on the Kidfest planning committee as well as setting up an outreach booth and supply volunteer staff to help with the hospitality booth. Staff and educators also presented at the Soft Shell Crab Festival, Birthday for the Birds, & Outside Foundation’s Clean Water Festival & Kayak Cleanups.

Special Presentations & Outreach: Commissioner Denise Parsick presented at the Environmental Education Association Of SC’s annual meeting. She also has been active working to encourage people to choose reusable shopping bags and promoting a plastic bag ban in Beaufort. She also attends or watches the Stormwater Board meetings. Educators attended back to school expo events.



Beaufort SWCD presented their 28th Eco Camp, Nightly News, focusing on nocturnal animals and the night sky.



Right & upper right, Dr. George Rump presented a planetarium class, complete with information about the August 21st Solar Eclipse.



Above, Kristen Mattson with Lowcountry Institute talked about ponds & turned kids into critters at Eco Camp. Below, Lila Arnold with Lowcountry Raptors showed several fascinating birds of prey to the campers.



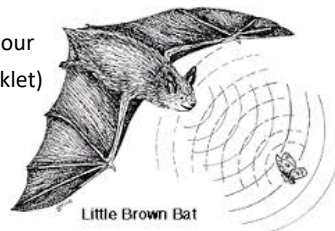
Left, Tony Mills with Coastal Kingdom shows baby alligators. Right, John O’Connell leads a program on earthworms.



Pam Floyd & Debby Way with the Marine Debris presentation at the Shelter Cove Clean Water Festival.

Insect eating bats use echolocation to find their food and fly around things.

(From our Bat Booklet)



Right, on Earth Day Denise Parsick escorts the “Bag Monster” to emphasize the overuse of plastic bags, which litter our roads and waterways.



Water Quality & Conservation Partnerships

Together for Beaufort Water Quality Coalition: As a member of the Beaufort County Human Services Alliance, Beaufort SWCD supports *Together for Beaufort* by leading the T4B Water Quality Coalition. Beaufort SWCD continues to strengthen this coalition that consists of agencies and organizations involved in promoting, educating, & enforcing clean water in Beaufort County. This year we had combined our meetings with **Lowcountry Stormwater Partners** since there are so many members belonging to both groups. Each meeting has a special presentation on a relevant topic.



Green Steps Schools: Our staff mentors Whale Branch Elementary School and work to recruit other local schools to participate in the Green Steps Schools programs. The program encourages students to participate in environmental science activities, to learn about conservation practices, as well as promoting team building and qualifying their school for project grants from the state. We are amazed at what these Green Steps Teams have accomplished. Check out programs and school websites at <http://greenstepschools.com/>

Other Education News: BSWCD provides judges for local Elementary and Middle School **Science Fairs** when possible. This past year Beaufort SWCD received a **Lowcountry RC& D Youth Education Grant** to provide 40 conservation programs that served approximately 800 youth at schools and special programs. Carol Murphy developed **resource booklets** to accompany Snakes, Bats, Spiders, Sharks, Cargo for Conservation and Arbor Day Programs. Educators have been partnering with the Outside Foundation to present the Enviroscape for **Kids in Kayaks** for Bluffton & Hilton Head Island 7th graders.

The **H.E. McCracken Memorial Scholarship** was established in honor of the late Emmitt McCracken in 1984 to benefit Clemson University students from Beaufort enrolled in Agriculture, Natural Resources or Biology studies.



Mail donations to:
Clemson University Foundation
P.O. Box 1889
Clemson, SC 29633
Include Reference # 539,
McCracken Scholarship Fund



Above, Pam Floyd, Claude McLeod, Denise Parsick, & Luke Inabinett receive the RC & D Grant Award. Left, Denise Parsick gives Debby Way her 10 year SC Conservation Districts Employee Association award.

Our Conservation Partnership Services are Available to All Citizens of Beaufort County

Technical Support to land owners, producers and government entities on BMPs through USDA-NRCS.

Educational Support and outreach programs to teachers, students, scouts, churches, camps & civic groups.

Coordinate partnerships with other agencies on variety of projects, programs, and festival outreach events.

Technical support for creation of trails, greenways, blueways, and outdoor learning centers.

Library of historic aerial photography from 1955, soil surveys, topography, and other conservation maps.

SPECIAL THANKS TO THE FOLLOWING PARTNERS WHO PROVIDE FUNDING, IN-KIND SERVICES, MATERIALS & OTHER TYPES OF SUPPORT:

ACE Basin NERR
Beaufort County Schools
Lowcountry Institute
Beaufort County Clemson Extension
Coastal Conservation League
Lowcountry Stormwater Partners

SC Sea Grant Consortium
Ms. Lorraine Robertson
Port Royal Sound Foundation
St. Peter's Catholic School
Friends of Hunting Island
Town of Port Royal

Lowcountry RC & D
Beaufort Kayak Tours
Dr. Al Segar
Dr. Tom Ogle
Mr. John O'Connell
BJWSA

Beaufort County Farm Bureau Women's Committee

Beaufort SWCD Affiliate Member Application

Supporting — \$35.00 Sustaining—\$50.00 Patron —\$100.00 Associate—\$100 +

Circle Level of support Total Enclosed: \$ _____

Please make checks Payable to: “Beaufort Conservation District”

Mail to: PO Box 70 Port Royal, SC 29935

Call : 843-255-7306 or Email: bswcd@islc.net

www.beaufortconservationdistrict.org

Name & or Company _____

Address _____

Phone _____ Email _____

Thank you for your support!

Please be an Affiliate Today & Help Educate Beaufort County about Conservation of our Natural Resources!
Donations directly fund local Environmental Science education programs for our area Students!

Affiliate Members

Beaufort County School District
WH McLeod & Sons, Inc.
Lowcountry RC & D
Unitarian Universal Fellowship of Beaufort

Ulmer Brothers, Inc.
Mr. & Mrs. William Murphy
Mr. & Mrs. Russell Berry
Beaufort County Farm Bureau Women’s Committee

Location: Crystal Lake Park, 124 Ladys Island Dr. Beaufort SC 29907

Come see us! New Office Hours: 9:00 am to 2:00 pm or call for an appointment.

Beaufort Soil & Water Conservation District
Location: Crystal Lake Park, 124 Ladys Island Dr.
Beaufort SC 29907
Mailing: PO Box 70
Port Royal, SC 29935

