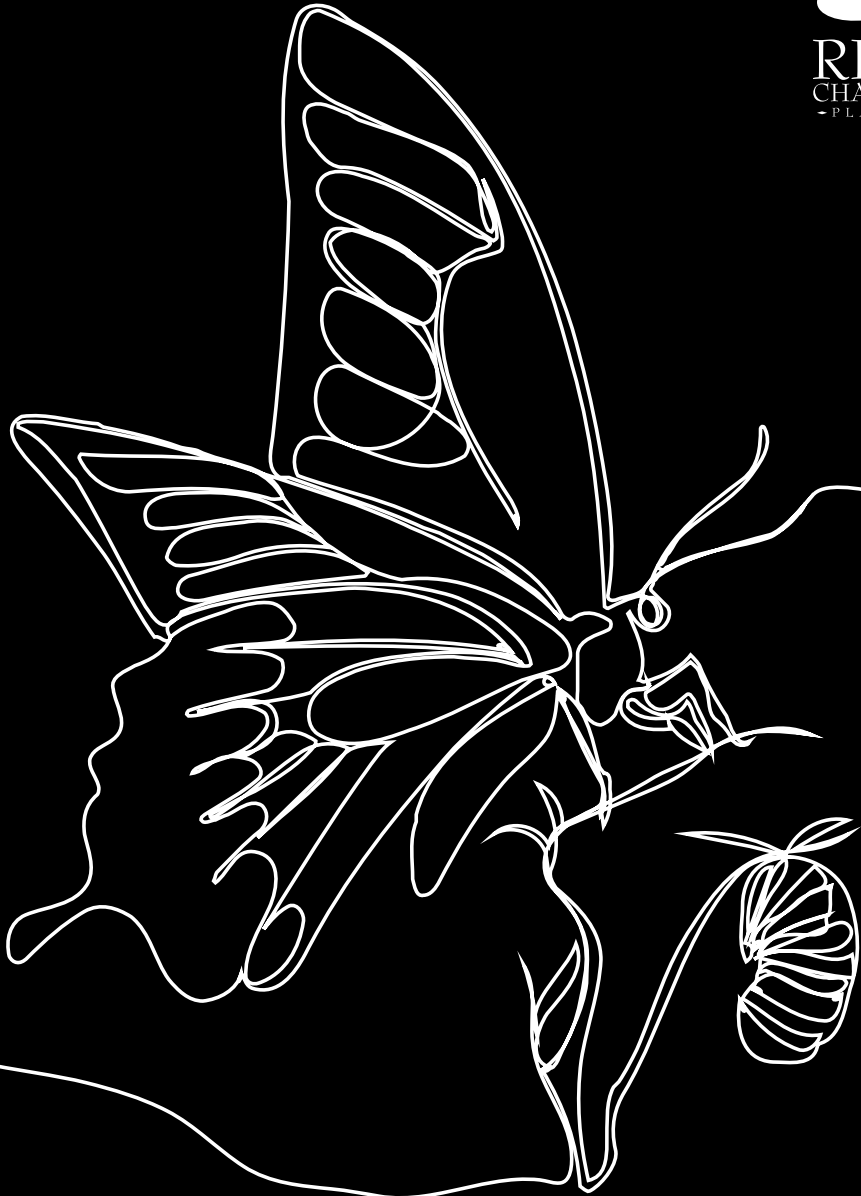


resilience and jubilation

FROM ASHES TO BEAUTY

RENEWAL AND TRANSFORMATION

RITZ
CHAMBER
- PLAYERS -



In association with Jacksonville University

APRIL 25, 2026 | 7:30 PM

Dear Friends and Music Lovers,

Welcome to the Ritz Chamber Players' 24th Season: **Resilience & Jubilation.**

Music holds a unique power to reveal our deepest wounds while also beginning the process of healing. Tonight's program, *From Ashes to Beauty*, reflects that enduring strength.

We gather for an evening of reflection—works that confront grief, honor resilience, and guide us toward renewal. From Hailstork's reimaginings of *We Shall Overcome* and *Kum Ba Yah*, to Zwilich's remembrance of *Elijah McClain*, and Lee's lament for *Trayvon Martin*, this music moves through history's shadows toward transcendence, culminating in Kodály's *Duo*. We leave not only moved, but changed.

As we look toward our milestone 25th Anniversary Season, we are deeply grateful for the donors, partners, and audiences who have sustained nearly a quarter-century of music-making. Your support remains the heartbeat of RCP.

We invite you to continue this journey with us. Please consider scanning the QR code to make a gift and help ensure this experience endures. From ashes to beauty—together.

With heartfelt gratitude,



Terrance L. Patterson
Executive & Artistic Director



OUR MISSION

To showcase diversity by spotlighting the extraordinary artistry of African American musicians, past and present. RCP seeks to transcend cultural boundaries and amplify the rich mosaic of our society through the universal language of music. Above all, we want to share the transformative power of classical music and ensure it is accessible to everyone.

TABLE OF CONTENTS

About the Ritz Chamber Players _____	4
Concert Program: From Ashes to Beauty _____	5
Meet the Ritz Chamber Players _____	6
Kelly Hall-Tompkins - Violin _____	6
Kervonna Shuford - Viola _____	7
Khari Joyner - Cello _____	8
2025-2026 Season Calendar _____	9
A Special Thank You _____	10
Honorary Chairs of RCP _____	11
Contact _____	12

ABOUT THE RITZ CHAMBER PLAYERS

THE RITZ CHAMBER PLAYERS (RCP), is hailed by *The Baltimore Sun* as “one of the most interesting and dynamic ensembles to emerge in recent years.” Boasting some of the world’s preeminent musicians spanning the African diaspora, it brings a fresh, new energy to the classical music genre. Its members perform with prestigious organizations such as the New York Philharmonic, Boston Symphony, Chicago Symphony, Pittsburgh Symphony, Philadelphia Orchestra and the London Symphony.

Founded in 2002 by clarinetist and Artistic Director Terrance L. Patterson, RCP presents a landmark series at the Terry Concert Hall at Jacksonville University in Jacksonville, Florida, which combines exceptional artistry on stage with inspiring educational programs in schools and throughout the community. Through its concert series in Jacksonville and performances across the United States, RCP continues to build the participation of multicultural audiences that reflect our diverse society.

Called “a remarkable ensemble,” the group’s flexible make-up allows for many astonishing combinations of virtuoso players, leading to “riveting” performances of the standard classical music repertoire. RCP are also unique in their dedication to showcase the works of African-American composers with exceedingly artistic and informed interpretations.

RCP made its highly successful debut concert at New York’s Weill Recital Hall in Carnegie Hall to a standing-room-only crowd, with critics proclaiming the group’s performance “extraordinary” and “vital and fresh.” Most recently, the ensemble’s performances have been enthusiastically received in Miami, Atlanta, Baltimore, Los Angeles, Raleigh, the British Virgin Islands, Chicago, and Seattle, and in several New York venues, including Rockefeller University and Lincoln Center.

RCP, one of the country’s most significant chamber ensembles, celebrated its international radio debut on the BBC World Service and WNYC New York with a concert broadcast to more than 30 countries, and its first national television appearance on the 37th Annual NAACP Image Awards. RCP have been guests of the highly-praised National Public Radio shows *Performance Today* and the *Tavis Smiley Show* and are regular guests of the Madison and Amelia Island Chamber Music Festivals.

CONCERT PROGRAM

FROM ASHES TO BEAUTY: RENEWAL AND TRANSFORMATION

ADOLPHUS HAILSTORK (B. 1941)

Three Spirituals for String Trio (2007)

I. We Shall Overcome II. Kum Ba Yah III. Great Day

Kelly Hall-Tompkins, Violin | Kervonna Shuford, Viola | Khari Joyner, Cello

LUDWIG VAN BEETHOVEN (1770–1827)

Duet mit zwei obligaten Augengläsern, WoO 32 (“Eyeglass Duo”)

I. Allegro ■ II. Minuet (Allegretto) – Trio

Kervonna Shuford, Viola | Khari Joyner, Cello

COLERIDGE-TAYLOR PERKINSON (1932–2004)

Louisiana Blues Strut: A Cakewalk for Solo Violin

ELLEN TAAFFE ZWILICH (B. 1939)

A Little Violin Music (In Memory of Elijah McClain)

DANIEL BERNARD ROUMAIN (DBR) (B. 1971)

Filter for Solo Violin (1992/2017)

Kelly Hall-Tompkins, Violin

INTERMISSION

JAMES LEE, III (B. 1975)

Abraham’s Sons (In Memoriam: Trayvon Martin)
for Solo Cello (2013/2014)

Khari Joyner, Cello

ZOLTÁN KODÁLY (1882–1967)

Duo for Violin and Cello, Op. 7

I. Allegro serioso, non troppo ■ II. Adagio – Andante
III. Maestoso e largamente, ma non troppo lento – Presto

Kelly Hall-Tompkins, Violin | Khari Joyner, Cello

MEET THE RITZ CHAMBER PLAYERS

KELLY HALL-TOMPKINS - VIOLIN



Acclaimed by The New York Times as “the versatile violinist who makes the music come alive” and praised for her “tonal mastery” (BBC Music Magazine) and “searing intensity” (American Record Guide), Kelly Hall-Tompkins is forging a dynamic career as a soloist and chamber musician. Winner of a Naumburg International Violin Competition Honorarium Prize and a Concert Artists Guild Career Grant, she has appeared as soloist with the Dallas Symphony, Oakland Symphony, Jacksonville Symphony, Tulsa Philharmonic, Chamber Orchestra of New York, and a Brevard Festival Orchestra under Keith Lockhart, in addition to concerts and recitals throughout the world. For 13 months on Broadway, Ms. Hall-Tompkins served as the “Fiddler” – violin soloist – for the Bartlett Sher production of *Fiddler on the Roof*, with solos written especially for her, in a Grammy and Tony-nominated production. She received an Honorary Doctorate from the Manhattan School of Music in 2016, where she also delivered the Commencement address, and is one of three 2017 recipients of the Sphinx Medal of Excellence, presented at the U.S. Supreme Court by Justice Sotomayor. She is the founder of Music Kitchen – Food for the Soul, bringing live classical music to

6 unboxed communities in New York City.

KERVONNA SHUFORD - VIOLA



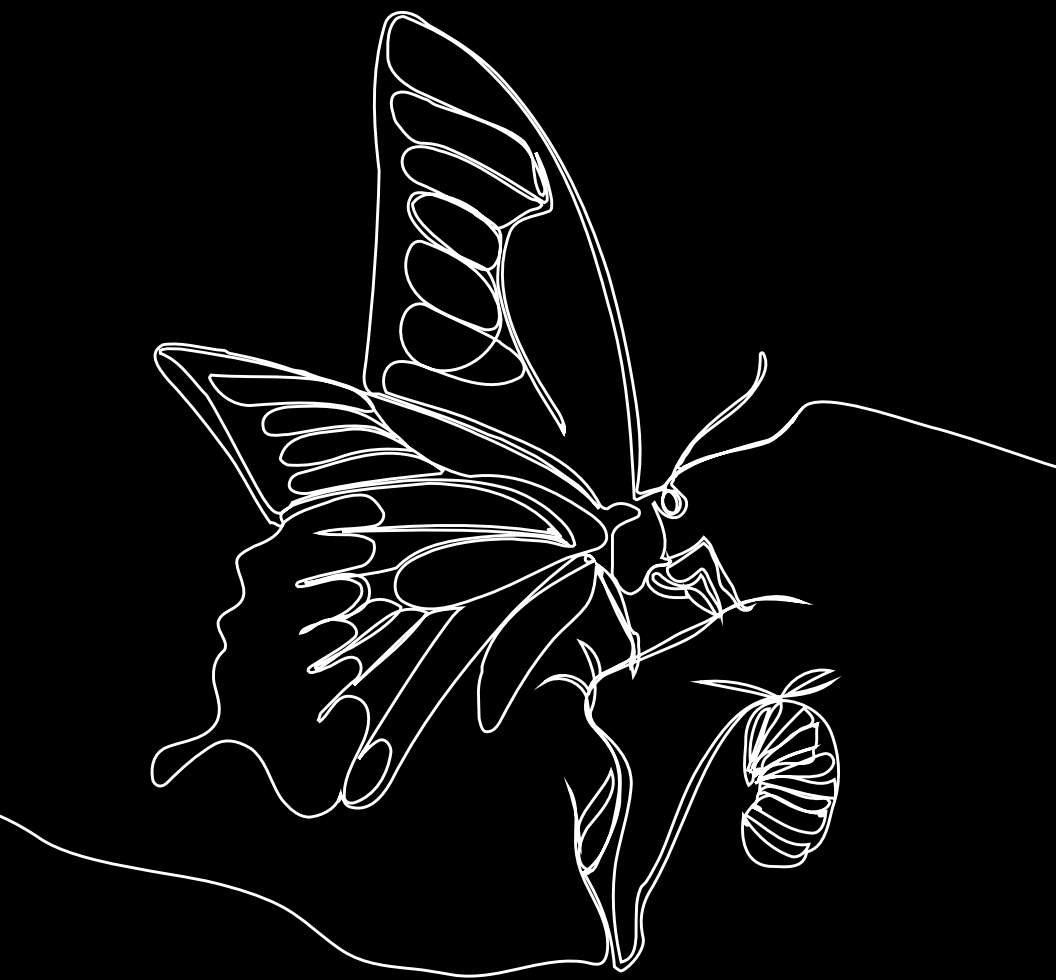
Kervonna Shuford is a vibrant violist with a passion for collaborative projects. A native of Florida, she completed her Bachelor of Music degree at the New England Conservatory under the tutelage of Martha Katz. She is a member of the Boston Philharmonic and performs with numerous Boston-based ensembles. Ms. Shuford served as principal viola under the baton of Valery Gergiev and has had the pleasure of working with esteemed artists such as Janine Jansen, Denis Matsuev, Emmanuel Ax, Jaime Laredo, and Christoph Eschenbach. She has participated in masterclasses with Kim Kashkashian, Paul Katz, Dimitri Murrath, and Clive Greensmith. As a member of the National Youth Orchestra (2016), she performed at major concert halls across Europe and the United States, including the Concertgebouw and Carnegie Hall. A committed arts educator, she established a youth string program at Faith's Place Center for Arts Education in her home state of Florida and serves as a resident musician with Musicconnects.e

KHARI JOYNER - CELLO



Acclaimed musician and arts ambassador Khari Joyner is one of the leading cellists of his generation. Dubbed by New York Classical Review as “one of the most exciting young musicians on the classical scene,” he has a following nationally and abroad. A passionate advocate for the music of today, his achievements include performing the world premiere of MacArthur “Genius” Tyshawn Sorey’s *Cycles of My Being*, the New York premiere of Kaija Saariaho’s cello concerto *Notes on Light*, and the world premiere of Carman Moore’s *MADIBA* for cello and orchestra. Further accolades include a private performance for President Barack Obama in the Oval Office, a performance of Britten’s *Symphony for Cello and Orchestra* as soloist with the Juilliard Orchestra, and the U.S. premiere of Valentin Bibik’s *Cello Concerto No. 2* with the New Juilliard Ensemble. Heralded by the Atlanta Journal Constitution as “one of the most promising cellists in the country,” Joyner made his orchestral debut at 17 with the Atlanta Symphony under Robert Spano and has since performed concertos with the Buffalo, New World, New Jersey, Akron, and Sphinx Symphonies. He is the recipient of a 2017–2018 career grant from the Leonore Annenberg Fellowship for the Performing and Visual Arts and holds a Doctor of Musical Arts degree from The Juilliard School. Dr. Joyner serves as Assistant Professor of Cello and head of the strings area at Baldwin Wallace University. A frequent guest with the Ritz Chamber Players, he is also a founding member of the KAJ Trio.

Ritz Chamber Players 2025-2026 Season



Experience the Transformative Power of Music!

FROM ASHES TO BEAUTY: RENEWAL AND TRANSFORMATION

Saturday, April 25, 2026

JUNETEENTH CELEBRATION: TRIUMPH & JUBILEE

Saturday, June 20, 2026

A SPECIAL THANK YOU TO

Holly Smith-Hale	Kenneth G. and Rosine Bramly Charron	Gladys Vaughn
Kimberly Morrison	Darnell Smith	Kerfong Lee
Nadine Carswell	Arts Committee Bold City Chapter of The Links, Inc	Anita P. Ranelli
Amanda Anderson	Martha Frye Baker	Claudia Baker
Jean Aikens	Marsha Oliver	Dayan Sandler
Aleizha Batson	Angela Getter	Elizabeth Player
City of Jacksonville Senior Services	Conchita Robinson	Allister Fisher
Alonzo and Judy Batson	Brenda Ezell	Judy Dines
Bishop Anthonée J. Patterson	Diane Halverson	Reva Oliver
Kimberly Beasley	Kenneth Charron	Ingrid Montgomery
Craig Gibbs	Kristen and Thomas Majdanics	Marguerite Stewart
Russell Collins	Stephen Williams	Gretchen Mitchell
Mary Turner	Eartha M. M. White Fund	Jeffrey Mumford
Susan Bancks		Regine Denis

Delores Barr Weaver Funds *Legacy*
established 2012



**THE COMMUNITY
FOUNDATION**
— FOR NORTHEAST FLORIDA —



**NATIONAL
ENDOWMENT
for the ARTS**
arts.gov



Linda Berry Stein
College of Arts & Sciences



RITZ CHAMBER MUSIC SOCIETY
BOARD OF DIRECTORS

EXECUTIVE COMMITTEE

Conchita Robinson, *Chair*

Haesuk Heagney, *Vice Chair*

Jean Aikens, *Secretary*

Brenda B. Ezell, B.C.S., *RCMS Board Attorney*

MEMBERS

Claudia Baker, Esq

Judy Batson, PhD

Kristen Petrillo Majdanics

Angela Y. Getter

Maxwell H. Lee, Principal

Allyson Reese

Shamika Wright

STAFF

Terrance L. Patterson - *Executive and Artistic Director*

Sarah Chau - *Director of Operations*

Unlock the Power of Music with Your Support

RCP has been a beacon of cultural excellence and diversity in Jacksonville for over two decades. Supporting RCP isn't just philanthropy—it's a gateway to enriching cultural experiences and fostering diversity in the arts.

Help keep the music alive with a donation.



RITZ
CHAMBER
- PLAYERS -



Thank you for your support of RCP.

New this year, we are offering a “Pay What You Can” option, giving you the opportunity to support our mission in any way that feels right. Every gift, no matter the size, helps us nurture world-class artists, inspire audiences, and uplift the spirit of our city through music.

CONTACT

Ritz Chamber Players • Ritz Chamber Music Society
Jacksonville Center for the Performing Arts
300 Water Street, Suite 200 • Jacksonville, Florida 32202
RitzChamberPlayers.org