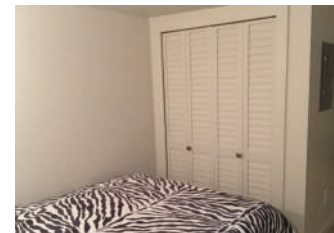
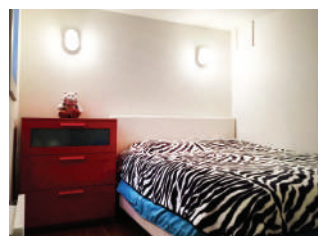




**1-452 VALADE ST.
WINNIPEG, MB R2H 2V8**



SUR LE PARC | SUITE 1 | BASEMENT



640 sqft

FEATURES:

- Concrete Countertops
- Eat-at Kitchen Island for Flexibility
- Stainless Steel Kitchen Appliances
- Dishwasher & Microwave-Range hood
- Solid Wood & Marble Bathroom Furnishings from Restoration Hardware
- Window Coverings Included
- Front Yard Overlooking Verendrye Park
- Separate In-suite Laundry Closet
- Energy Efficient Building Construction
- Low-Profile Wall Mounted Air Conditioning
- Quaint Courtyard Common Space with Patio Furnishings
- Yard Maintenance
- Elpha Built-In Closet Storage Solutions
- In-Suite, European Style Washer/Dryer Combo Unit

BASE RENT:

\$1,300/month

VALUE ADDED PACKAGE:

\$195/month

- Parking Stall
- High Speed Internet
- Basic Cable (digital)
- Hot & Cold Water
- Common Hydro

TOTAL MONTHLY RENT:

\$1,495/month

SECURITY DEPOSIT

\$747.50

PET DEPOSIT*

\$747.50

LEASE TERM

1 YEAR

