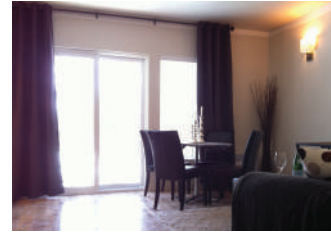




2-452 VALADE ST.
WINNIPEG, MB R2H 2V8



SUR LE PARC | SUITE 2 | MAIN FLOOR

 2

 1

 670 sqft

FEATURES:

- Concrete Countertops
- Eat-at Kitchen Island for Flexibility
- Stainless Steel Kitchen Appliances
- Dishwasher & Microwave-Range hood
- Solid Wood & Marble Bathroom Furnishings from Restoration Hardware
- Window Coverings Included
- Balcony Overlooking Verendrye Park
- Separate Laundry Closet
- Energy Efficient Building Construction
- Low-Profile Wall Mounted Air Conditioning
- Elm & Iron Entertainment Unit from Restoration Hardware with Wall Mounted TV
- Quaint Courtyard Common Space with Patio Furnishings
- Yard Maintenance
- Elpha Built-In Closet Storage Solutions
- In-Suite, European Style Washer/Dryer Combo Unit

BASE RENT:

\$1,550/month

VALUE ADDED PACKAGE:

\$225/month

- Heated Garage Stall
- High Speed Internet
- Basic Cable (digital)
- Hot & Cold Water
- Common Hydro

TOTAL MONTHLY RENT:

\$1,775/month

SECURITY DEPOSIT

\$887.50

PET DEPOSIT*

\$887.50

LEASE TERM

1 YEAR

