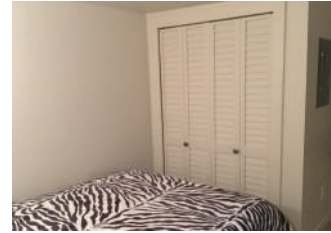
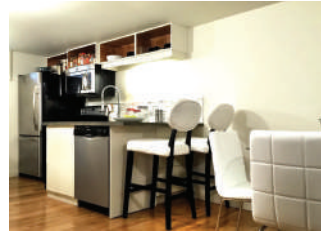
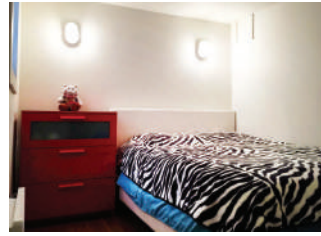




1-452 VALADE ST.
WINNIPEG, MB R2H 2V8



SUR LE PARC | SUITE 1 | BASEMENT



640 sqft

FEATURES:

- Concrete Countertops
- Eat-at Kitchen Island for Flexibility
- Stainless Steel Kitchen Appliances
- Dishwasher & Microwave-Range hood
- Solid Wood & Marble Bathroom Furnishings from Restoration Hardware
- Window Coverings Included
- Front Yard Overlooking Verendrye Park
- Separate In-suite Laundry Closet
- Energy Efficient Building Construction
- Low-Profile Wall Mounted Air Conditioning
- Quaint Courtyard Common Space with Patio Furnishings
- Yard Maintenance
- Elpha Built-In Closet Storage Solutions
- In-Suite, European Style Washer/Dryer Combo Unit

BASE RENT:	\$1,350/month
VALUE ADDED PACKAGE:	\$230/month
• Parking Stall	
• High Speed Internet	
• Basic Cable (digital)	
• Hot & Cold Water	
• Common Hydro	

TOTAL MONTHLY RENT: \$1,580/month

SECURITY DEPOSIT	\$790.00
PET DEPOSIT*	\$790.00
LEASE TERM	1 YEAR

