



LED lamp for industrial machines.
 Anodized aluminum structure with glass protection 4mm thick and internal PMMA diffuser.
 High efficiency homogeneous light. Light color 5000K.
 Integrated driver LED system.
 24VDC power supply.
 M12 4P (M) for electrical connection.
 Four length version available.

TECHNICAL FEATURES

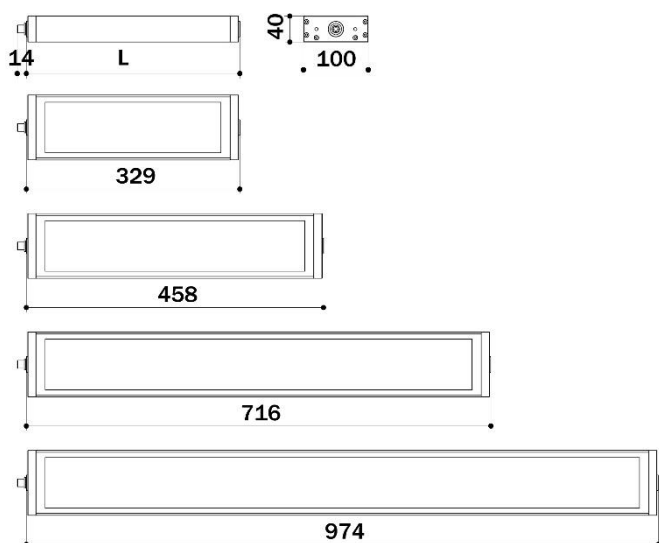
Model	Power supply	Power Watt	Current	Light color	Beam	Lumen led	Weight
HERIONOVA.27.50	24 VDC	27 W	1,2 A	5000 K - CRI75	120°	2800 lum	1,60 Kg ~
HERIONOVA.42.50	24 VDC	42 W	1,8 A	5000 K - CRI75	120°	4200 lum	2,20 Kg ~
HERIONOVA.68.50	24 VDC	68 W	2,9 A	5000 K - CRI75	120°	7000 lum	3,30 Kg ~
HERIONOVA.96.50	24 VDC	96 W	4,0 A	5000 K - CRI75	120°	9800 lum	4,45 Kg ~

Mechanical features

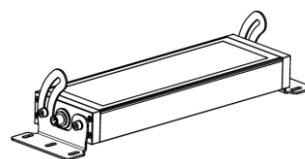
Structure
 Frontal glass
 Internal diffuser
 Fastening
 Electrica connection
 Operating temperature

Anodized aluminum
 Transparent tempered 4mm thick
 In PMMA
 Side plates / Adjustable rear mounting
 M12 4P (M) connector
 min -20° C - max +55° C

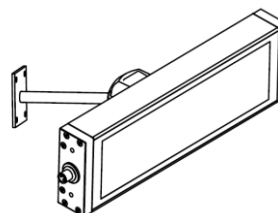
DIMENSIONS (all values in millimeters)



FASTENING ACCESSORIES



HERIONOVA.FX01
 Stainless steel fastening plates 2mm thick – 45° lamp rotation.

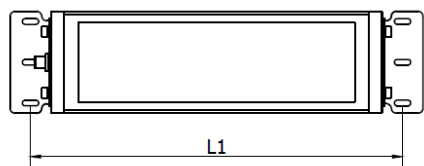
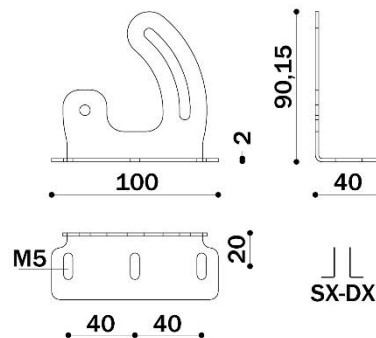
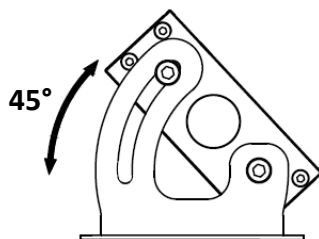
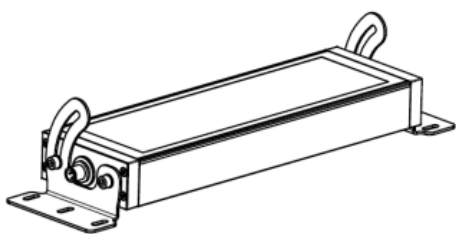


HERIONOVA.FX02
 Rear Fastening kit for HERIONOVA.



INSTALLATION

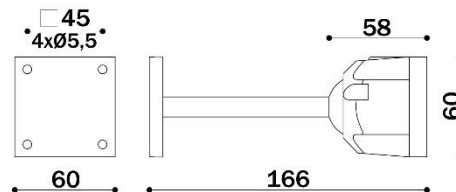
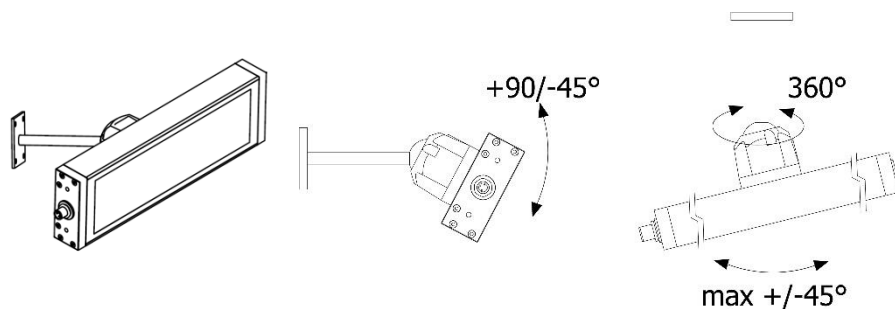
Fastening with HERIONOVA.FX01 accessories



Model	L1- in mm
HERIONOVA.27	369
HERIONOVA.42	498
HERIONOVA.68	756
HERIONOVA.96	1014

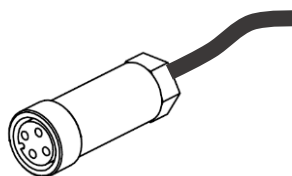
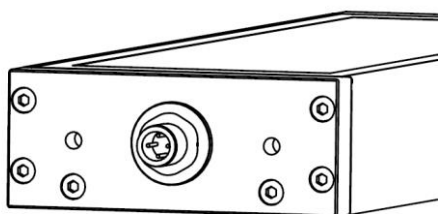
Interholes for fastening

Fastening with HERIONOVA.FX02 accessories



ELECTRICAL CONNECTION

Lamp with M12 4P (M) connector



Respect PIN polarities to connect the female connector

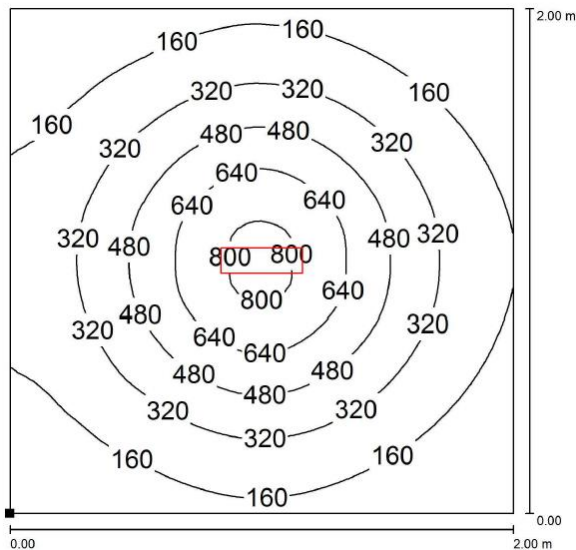
- PIN1 : 24 VDC positive
- PIN2 : GND ⚡
- PIN3 : 0 VDC negative
- PIN4 : not connected

Lamp protected against reverse polarity

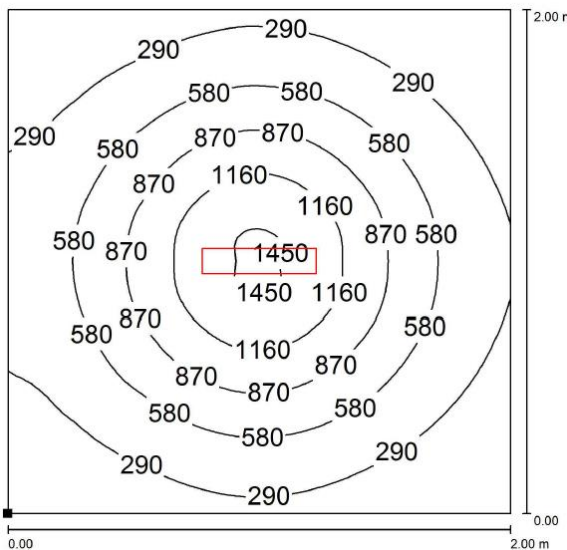


PHOTOMETRIC DATA – 1000mm FROM THE SURFACE 2000x2000mm

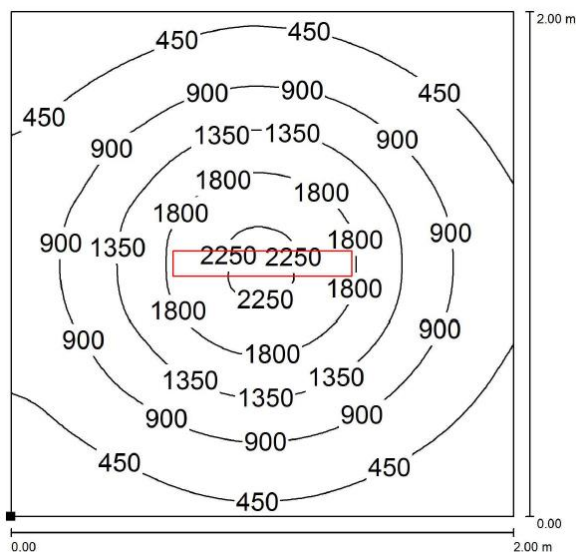
HERIONOVA.27.50



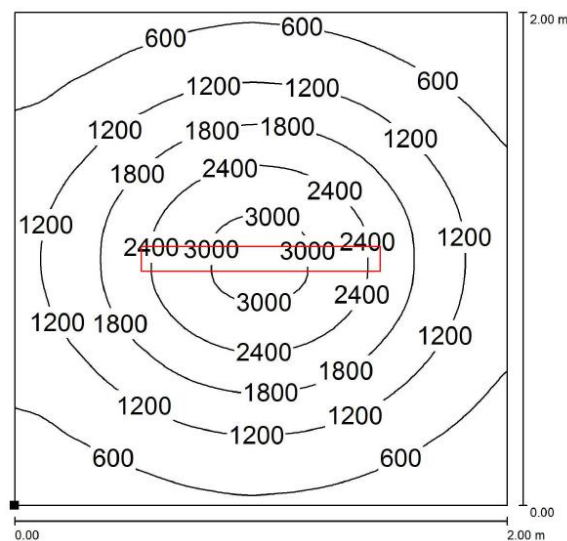
HERIONOVA.42.50



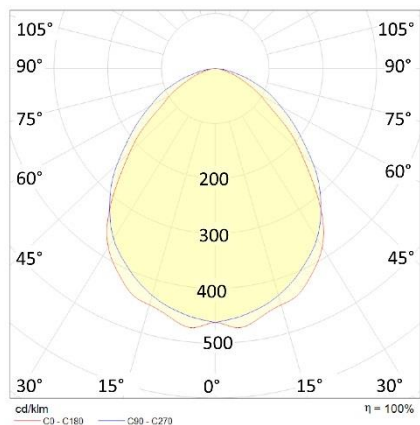
HERIONOVA.68.50

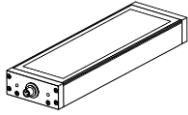


HERIONOVA.96.50




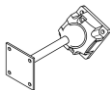







PHOTOMETRIC DATA



**ORDER CODES**

CODE	LIGHT COLOR	WATT	POWER SUPPLY	CONNECTION
HERIONOVA.27.50	5000K CRI75	27W	24VDC	M12 4P (M)
HERIONOVA.42.50	5000K CRI75	42W	24VDC	M12 4P (M)
HERIONOVA.68.50	5000K CRI75	68W	24VDC	M12 4P (M)
HERIONOVA.96.50	5000K CRI75	96W	24VDC	M12 4P (M)

ACCESSORIES CODE

CODE	DESCRIPTION
 HERIONOVA.FX01	Fastening plates (use M5 screws for fastening) – 45° regulation
 HERIONOVA.FX02	Rear fastening kit
 A0361005060922D	AC/DC converter 110-230/24VDC 60W
 A0371005061023D	AC/DC converter 110-230/24VDC 100W
 M12V.F.3C1,5	M12 4P (F) connector with PUR 3x0,75 L.1,5m cable
 M12V.F.3C3	M12 4P (F) connector with PUR 3x0,75 L.3m cable
 M12V.F.3C5	M12 4P (F) connector with PUR 3x0,75 L.5m cable
 M12V.F.3C10	M12 4P (F) connector with PUR 3x0,75 L.10m cable
 N11810001040302	M12 4P (F) connector for \varnothing 6-8mm cable