



Led lamp for industrial machines, CNC and EDM machines.
 Anodized aluminum structure with diffusing glass 5mm thick.
 New led technology with Integrated Driver System (IDS).
 High efficiency white homogeneous light.
 Easy to install. Easily adjustable thanks to the innovative mounting system.
 220-240V 50/60Hz Power supply. M12 connection.
 Built-in AC/DC converter .
 Three sizes available.

*Particularly suitable for high speed milling machines, CNC, extreme working environments.
 It can be installed also in wet environments.*

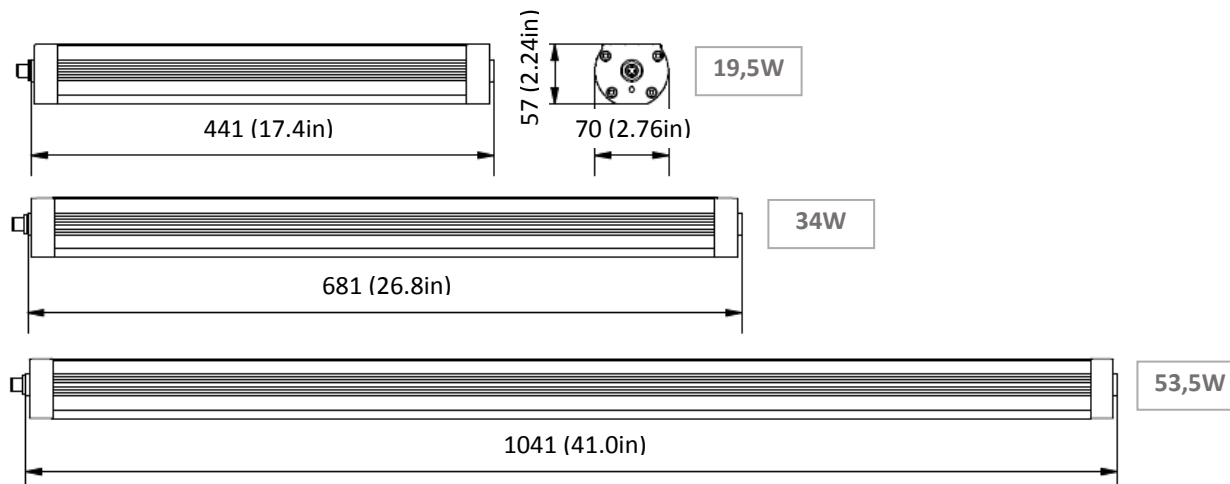
230V VERSION – Electrical features

Model	Power supply	Nr di LED	Watt	Current	Light color	Beam	Weight
TRACKALPHA.3.50.230	220-240V	54	19,5 W	0,9 A	5000 K - CRI75	120°	1,85 Kg / 4.08 lb ~
TRACKALPHA.5.50.230	220-240V	90	34 W	1,5 A	5000 K - CRI75	120°	2,40 Kg / 5,29 lb ~
TRACKALPHA.8.50.230	220-240V	144	53,5 W	2,4 A	5000 K - CRI75	120°	4,00 Kg / 8,82 lb ~

Description structure

Heatsink	extruded aluminum anodized
Side caps	painted aluminum
Frontal glass	tempered 5mm thick
Diffuser	internal glazed diffuser
Index of protection	IP67
Operating temperature	-20 / +55°C

DIMENSIONS (all values in millimeter / inch)

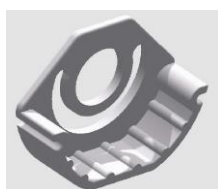




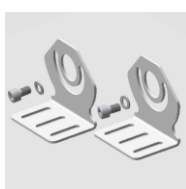
Fastening accessories – to be ordered separately



ALPHA.CLIP

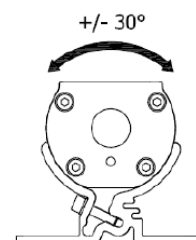
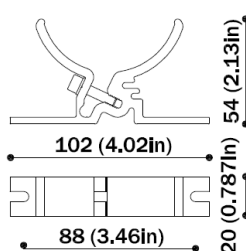


ALPHA.ADP

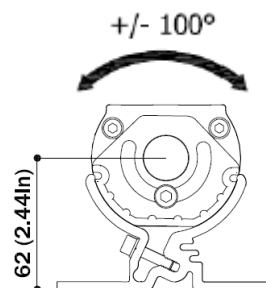
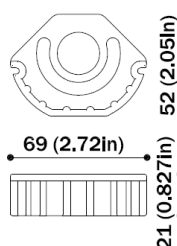
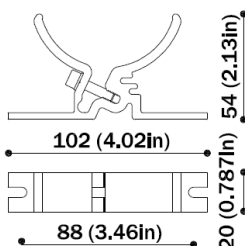


ALPHA.FX01

Rear fastening with ALPHA.CLIP

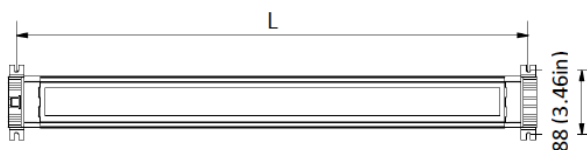


Side fastening with ALPHA.CLIP+ALPHA.ADP

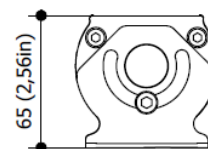
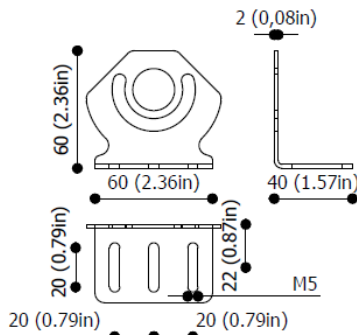


Model	L - in mm / inch
TRACKALPHA.3.50	455 / 17.9
TRACKALPHA.5.50	695 / 27.4
TRACKALPHA.8.50	1055 / 41.5

Interaxis distance

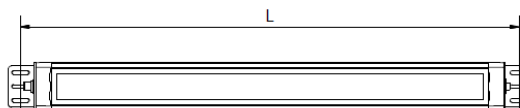


Side fastening with ALPHA.FX01



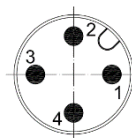
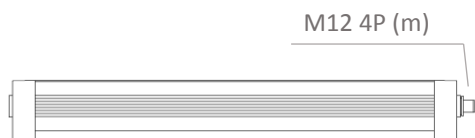
Model	L - in mm / inch
TRACKALPHA.3.50	478 / 18,8
TRACKALPHA.5.50	718 / 28,3
TRACKALPHA.8.50	1078 / 42,4

Interaxis distance





ELECTRICAL CONNECTION 230V – M12 4P MALE CONNECTOR

**RESPECT POLARITIES**






Respect PIN polarities to connect the female connector

PIN1 : L – 230V
 PIN2 : GND – ground connection
 PIN3 : N – 230V
 PIN4 : not connected

ORDER CODES 230V

CODE	N.LED	LIGHT COLOR	POWER W	POWER SUPPLY	CONNECTION
TRACKALPHA.3.50.230	54	5000K CRI75	19,5W	220-240 V	CON M12 (4P)
TRACKALPHA.5.50.230	90	5000K CRI75	34W	220-240 V	CON M12 (4P)
TRACKALPHA.8.50.230	144	5000K CRI75	53,5W	220-240 V	CON M12 (4P)

ACCESSORIES CODES

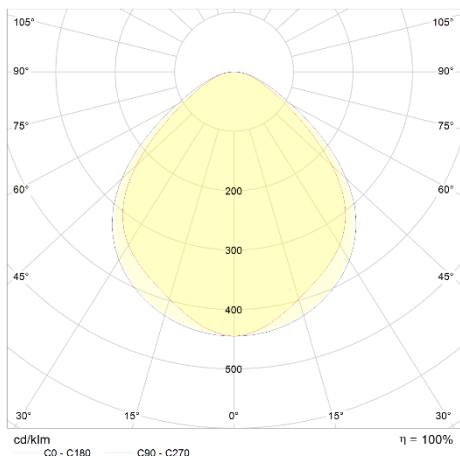
	CODICE	DESCRIZIONE
	ALPHA.CLIP	Fastening plates with M5 screws for rear fastening
	ALPHA.ADP	Adapters with M6 screws for side fastening
	ALPHA.FX01	Stainless steel fastening plates with M6 screw
	M12V.F.3C1,5 M12V.F.3C3 M12V.F.3C5 M12V.F.3C10	M12 4P (F) CONN + cable PUR 3x0,75 L1,5m M12 4P (F) CONN + cable PUR 3x0,75 L3m M12 4P (F) CONN + cable PUR 3x0,75 L5m M12 4P (F) CONN + cable PUR 3x0,75 L10m
	N11810001040302	CONN M12 4P (F) for 6-8mm cable

Data sheet
TRACK ALPHA 230V
 Industrial lighting system

C.C.E.A. s.r.l
 Via Piave, 2
 36077 Altavilla Vicentina (VI) - Italy
 Tel. ++39 0444 572083
 Fax. ++39 0444 572337
 E-mail: ccea@ccealights.com
 www.ccealights.com



PHOTOMETRIC DATA 230V VERSIONS – 1000mm FROM THE SURFACE (LUX)



Modell	Lumen LED
TRACKALPHA.3.50	2100
TRACKALPHA.5.50	3500
TRACKALPHA.8.50	5600

