



Led lamp for industrial machines, CNC and EDM machines.
 Anodized aluminum structure with diffusing glass 5mm thick.
 New led technology with Integrated Driver System (IDS).
 High efficiency white homogeneous light.
 Easy to install. Easily adjustable thanks to the innovative mounting system.
 Power supply 24Vdc - M12 4P (M) connection.
 Five sizes available.

*Particularly suitable for high speed milling machines, CNC, extreme working environments.
 It can be installed also in wet environments.*

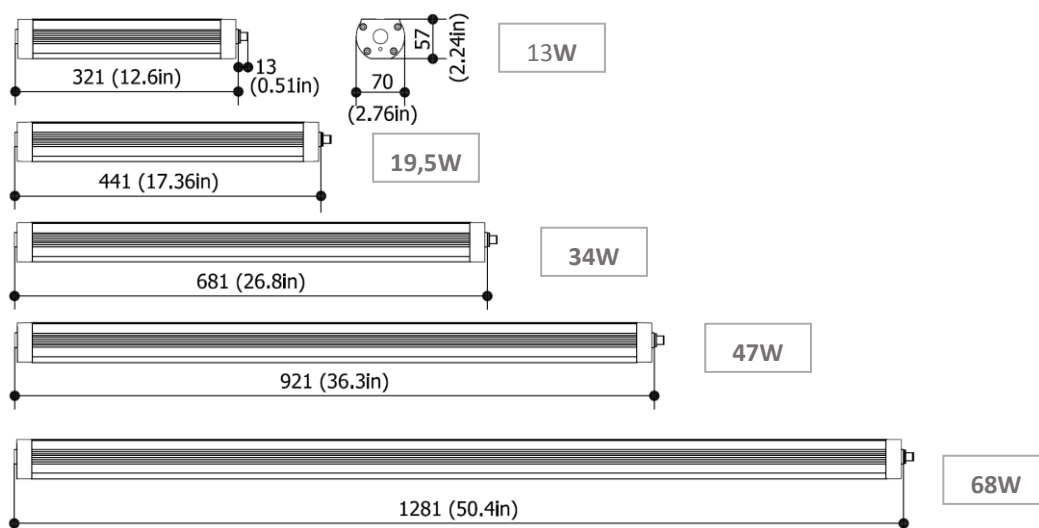
24VDC VERSION – Electrical features

Model	Power supply	Nr di LED	Watt	Current	Light color	Beam	Weight
TRACKALPHA.2.50	24 VDC	36	13 W	0,6 A	5000 K - CRI75	120°	1,15 Kg / 2,54 lb ~
TRACKALPHA.3.50	24 VDC	54	19,5 W	0,9 A	5000 K - CRI75	120°	1,85 Kg / 4,07 lb ~
TRACKALPHA.5.50	24 VDC	90	34 W	1,5 A	5000 K - CRI75	120°	2,20 Kg / 4,85 lb ~
TRACKALPHA.7.50	24 VDC	126	47 W	2,1 A	5000 K - CRI75	120°	3,25 Kg / 7,17 lb ~
TRACKALPHA.10.50	24 VDC	180	68 W	3,0 A	5000 K - CRI75	120°	4,50 Kg / 9,92 lb ~

Structure

Heatsink	extruded aluminum anodized
Side caps	painted aluminum
Frontal glass	tempered 5mm thick
Diffuser	internal glazed diffuser
Index of protection	IP67
Operating temperature	-20 / +55°C

DIMENSIONS (all values in millimeter / inch)

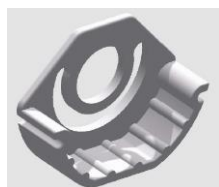




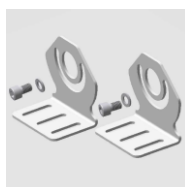
Fastening accessories – to be ordered separately



ALPHA.CLIP

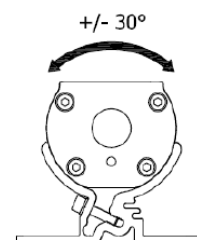
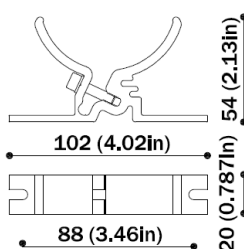


ALPHA.ADP

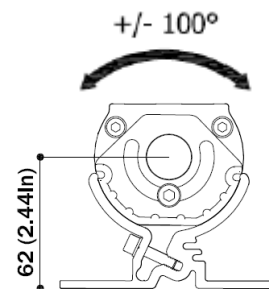
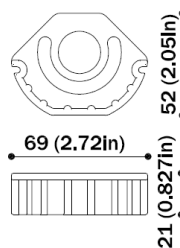
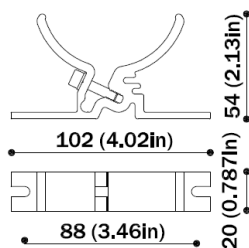


ALPHA.FX01

Rear fastening with ALPHA.CLIP

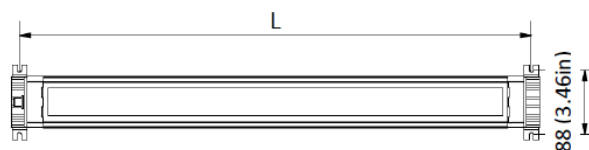


Side fastening with ALPHA.CLIP+ALPHA.ADP

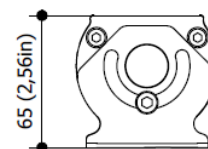
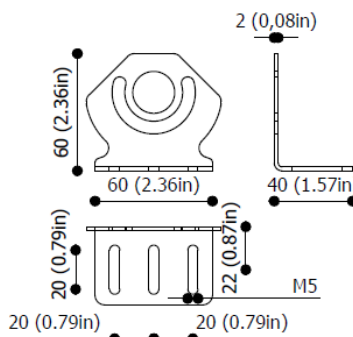


Model	L- in mm / inch
TRACKALPHA.2.50	335 / 13,2
TRACKALPHA.3.50	455 / 17,9
TRACKALPHA.5.50	695 / 27,4
TRACKALPHA.7.50	935 / 36,8
TRACKALPHA.10.50	1295 / 51,0

Interaxis distance

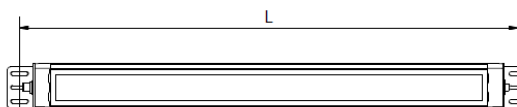


Side fastening with ALPHA.FX01



Model	L- in mm / inch
TRACKALPHA.2.50	358 / 14,1
TRACKALPHA.3.50	478 / 18,8
TRACKALPHA.5.50	718 / 28,3
TRACKALPHA.7.50	958 / 37,7
TRACKALPHA.10.50	1318 / 51,9

Interaxis distance





ELECTRICAL CONNECTION 24VDC – M12 4P MALE CONNECTOR

⚠ RESPECT POLARITIES

Respect PIN polarities to connect the female connector

PIN1 : 24 VDC
 PIN2 : GND \oplus
 PIN3 : 0 VDC
 PIN4 : not connected

Protection: reversed polarity

ORDER CODES 24VDC

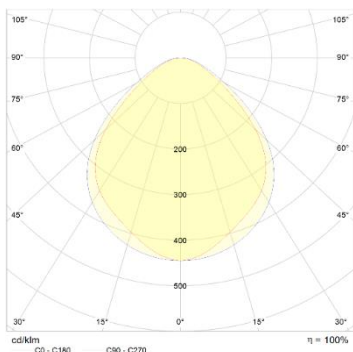
CODE	N.LED	LIGHT COLOR	POWER W	POWER SUPPLY	CONNECTION
TRACKALPHA.2.50	36	5000K CRI75	13W	24VDC	CON M12 (4P)
TRACKALPHA.3.50	54	5000K CRI75	19,5W	24VDC	CON M12 (4P)
TRACKALPHA.5.50	90	5000K CRI75	34W	24VDC	CON M12 (4P)
TRACKALPHA.7.50	126	5000K CRI75	47W	24VDC	CON M12 (4P)
TRACKALPHA.10.50	180	5000K CRI75	68W	24VDC	CON M12 (4P)

ACCESSORIES CODES

	CODICE	DESCRIZIONE
	ALPHA.CLIP	Fastening plates with M5 screws for rear fastening
	ALPHA.ADP	Adapters with M6 screws for side fastening
	ALPHA.FX01	Stainless steel fastening plates with M6 screw
	M12V.F.3C1,5 M12V.F.3C3 M12V.F.3C5 M12V.F.3C10	M12 4P (F) CONN + cable PUR 3x0,75 L1,5m M12 4P (F) CONN + cable PUR 3x0,75 L3m M12 4P (F) CONN + cable PUR 3x0,75 L5m M12 4P (F) CONN + cable PUR 3x0,75 L10m
	N11810001040302	CONN M12 4P (F) for 6-8mm cable



PHOTOMETRIC DATA 24VDC VERSIONS – 1000mm FROM THE SURFACE (LUX)



Modello	Lumen LED
TRACKALPHA.2.50	1400
TRACKALPHA.3.50	2100
TRACKALPHA.5.50	3500
TRACKALPHA.7.50	4900
TRACKALPHA.10.50	7000

