

LUCILLE
STUDIO

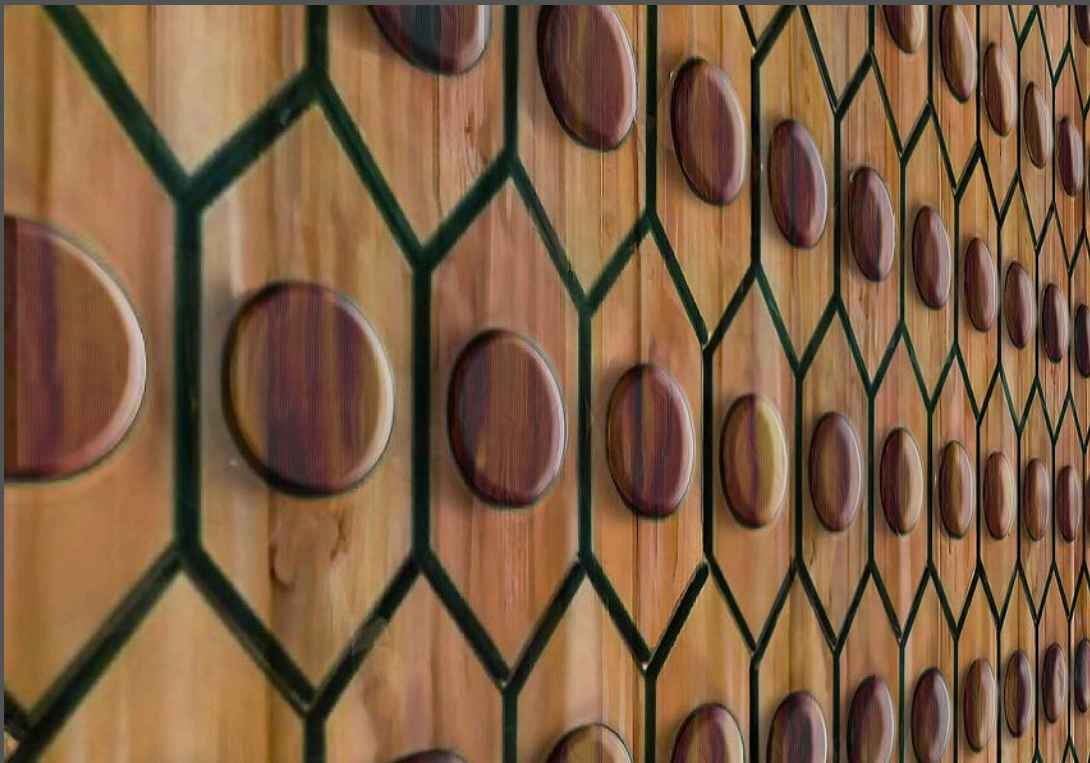
Custom 3D Tiles and Tambour

2025 CATALOG

www.lucille.studio



ONE
OF
A
KIND



What can you
dream up?

Honeycomb in White Oak with Walnut Pucks



Lucille Studio is more than a product—it's a celebration of artistry, innovation, and the enduring power of creativity. Named in honor of the founder's mother, Lucille, the brand embodies her spirit of resilience, love for the unique, and passion for fostering connection through art and design.

Lucille was a quiet yet powerful presence whose creativity shone brightest when she was surrounded by family and nature. She encouraged dreaming big and finding beauty in the details of life—a philosophy that lives on in every piece created by Lucille Studio.

Inspired by this legacy, Lucille Studio offers innovative, customizable tiles for walls, ceilings, and floors that blend craftsmanship, collaboration, and imagination. Each design is a testament to the values Lucille cherished: freedom of expression, individuality, and an unwavering commitment to excellence.

Lucille Studio doesn't just transform spaces—it tells stories, sparks wonder, and leaves lasting impressions. By bringing together art, functionality, and a bold vision, Lucille Studio is redefining what's possible in architectural design, one space at a time.



Aaron Cabeen, Owner, and his Mother, Betty Lucille



AARON CABEEN

Owner and CEO of Lucille Studio and Cabeen Originals

Aaron Cabeen's journey began with a pickup truck, a passion for authentic materials, and summers spent building alongside his dad and brother. These early experiences instilled a love for hardwoods and hands-on craftsmanship, eventually leading him to create Cabeen Originals. What started as a one-man shop grew into a premier fabrication company specializing in custom wood, metal, glass, and upholstery designs.

Building on this foundation, Aaron launched Lucille Studio to honor his late mother, Lucille. At Lucille Studio, he designs bold, customizable 3D tiles for walls, ceilings, and floors; blending creativity and collaboration to bring his clients' visions to life.

DESIGN PROCESS

"From Concept to Creation"

We partner with you every step of the way, from initial sketches to final production. Our streamlined process ensures your vision is realized with precision and care.

COLLABORATION

"We Build Together"

Great design is a partnership. We work closely with architects, designers, and clients to craft tailored solutions that elevate every space.

CUSTOMIZATION

"Your Vision, Made Reality"

Our Tiles and Tambour provide endless options in designs, scale, and materials to create one-of-a-kind solutions for your unique needs.

MATERIALS

"Sustainable. Durable. Beautiful."

We use premium, responsibly sourced woods and finishes that balance sustainability with timeless design.

TILES

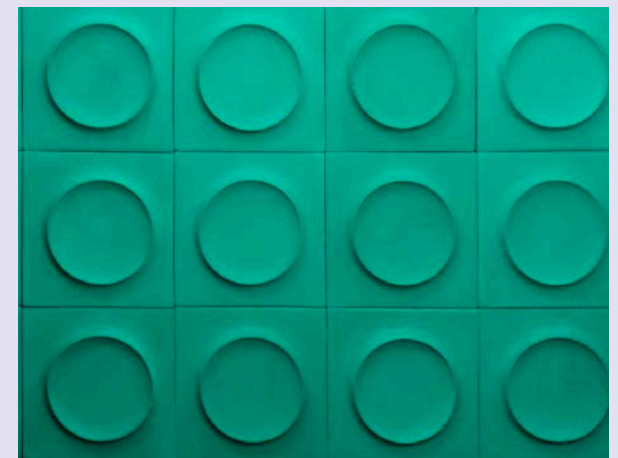
3D - INTERCONNECTING - ARCHITECTURAL - TILES



Aztec in Bleached White Oak



Honeycomb in Walnut with
Walnut, Clear, and Colored Glass Pucks



Dot Surprised in Colored Concrete



Angle Bangle in Walnut



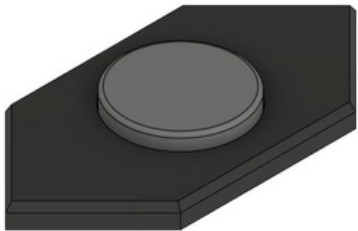
Honeycomb - Lucille Studio's first and signature design, Honeycomb, captures the essence of nature's most efficient structure. Its layered geometry creates a vibrant, multi-dimensional texture that inspires creativity. Perfect for mixing materials and colors, Honeycomb energizes spaces with its bold yet timeless design; embodying the innovation at the heart of Lucille Studio



☐ HONEYCOMB

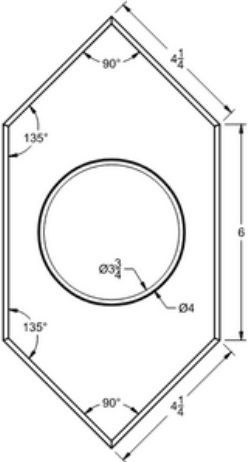
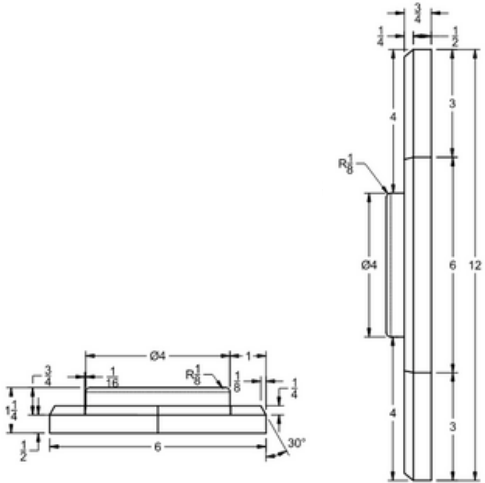
PROFILE:
Ver. 1

FIRE RATING:
SOUND RATING:



3D VIEW
SCALE:

AXON VIEW
SCALE:



DETAIL ELEVATION
SCALE:

DETAIL PLAN
SCALE:

SHEET NAME:

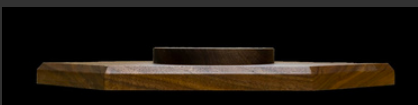
Tile



HONEYCOMB

Walnut, Glass

3D ARCHITECTURAL TILE || WALL • CEILING • FLOOR • FURNITURE



WWW.LUCILLE.STUDIO

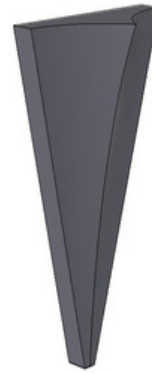
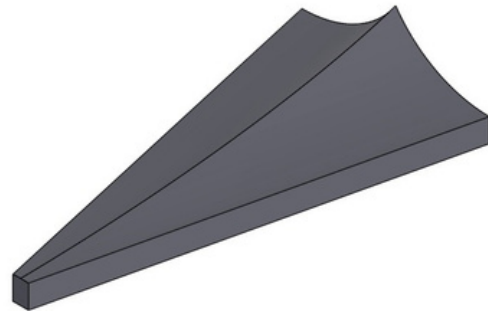
Paper Airplane - This tile pushes the boundaries of 3D tile design with its sculptural peaks and valleys. Inspired by the lotus flowers on the tops of Egyptian columns. This design combines architectural innovation with a sense of lightness and grace, making it a standout feature in any modern space.



AIRPLANE

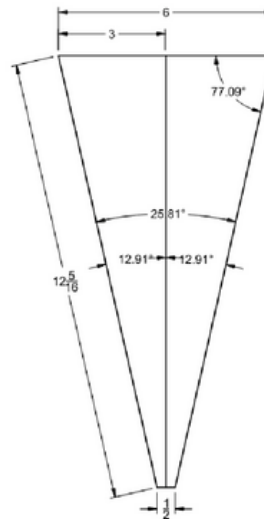
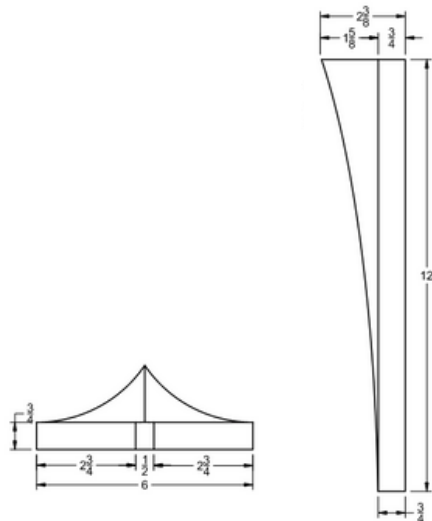
PROFILE:
Ver. 1

FIRE RATING:
SOUND RATING:



3D VIEW
SCALE:

AXON VIEW
SCALE:



DETAIL ELEVATION
SCALE:

DETAIL PLAN
SCALE:

SHEET NAME:

Tile

IIDA
IIDA/WESTEDGE
DESIGN FAIR
PRODUCT AWARDS
**BEST OF
COMPETITION**
2024

IIDA
IIDA/WESTEDGE
DESIGN FAIR
PRODUCT AWARDS
WINNER
2024

Winner of WestEdge Design Fair's 2024 IIDA Awards
for Wall Treatments and Best of Competition



AIRPLANE

Knotty Alder

3D ARCHITECTURAL TILE

|| WALL • CEILING • FLOOR • FURNITURE



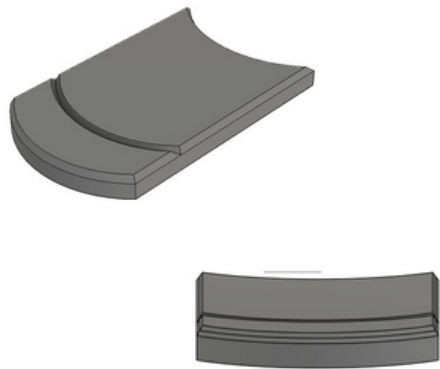
Oyster/Shield - This tile energizes any space with its fluid arches that transform into two distinct patterns: a flowing wave reminiscent of an oyster shell when arranged in alternating rows or a bold shield design when aligned side by side. Versatility and creativity define this design, evoking the natural elegance of smoothed shells on the beach. Perfect for any surface, Oyster adds a timeless, organic aesthetic to modern interiors.



OYSTER/SHIELD

PROFILE:
Ver. 1

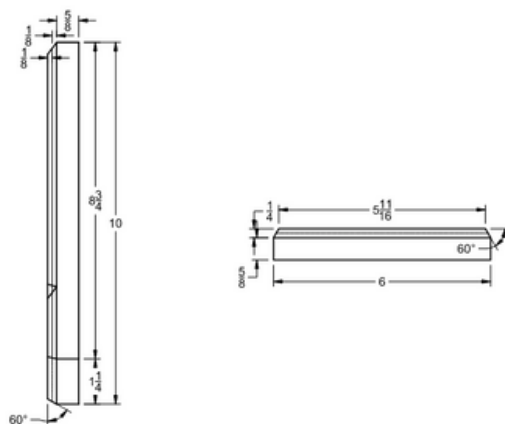
FIRE RATING:
SOUND RATING:



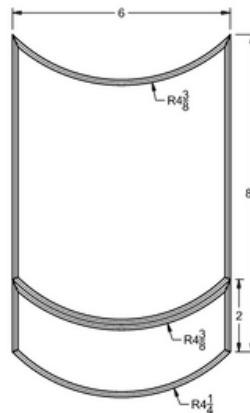
3D VIEW
SCALE:



AXON VIEW
SCALE:



DETAIL ELEVATION
SCALE:



DETAIL PLAN
SCALE:

SHEET NAME:

Tile



OYSTER/SHIELD

Walnut

3D ARCHITECTURAL TILE || WALL • CEILING • FLOOR • FURNITURE



WWW.LUCILLE.STUDIO

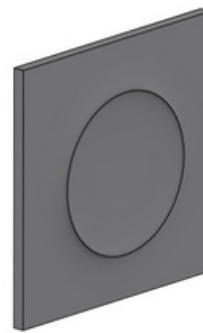
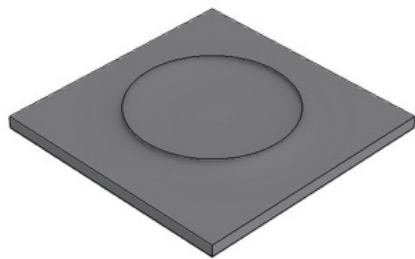
Dot Surprised - This tile adds a touch of whimsy and spontaneity to your space. Its playful design captures the excitement of a moment of surprise, bringing a lively and uplifting energy to walls, ceilings, or other creative installations.



DOT SURPRISED

PROFILE:
Ver. 1

FIRE RATING:
SOUND RATING:

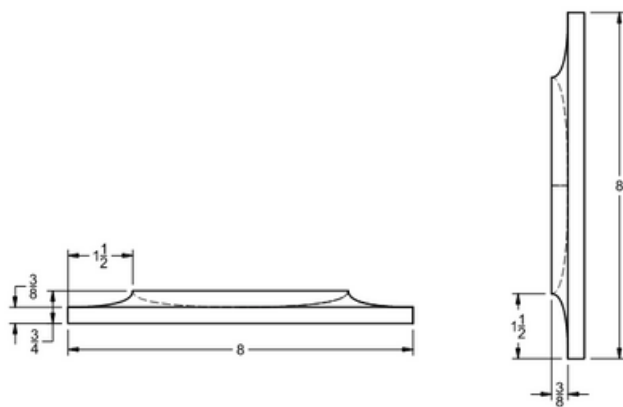


3D VIEW

SCALE:

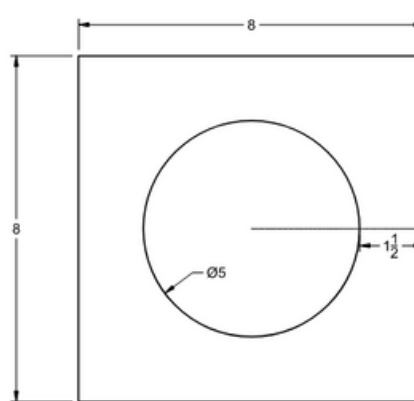
AXON VIEW

SCALE:



DETAIL ELEVATION

SCALE:



DETAIL PLAN

SCALE:

SHEET NAME:

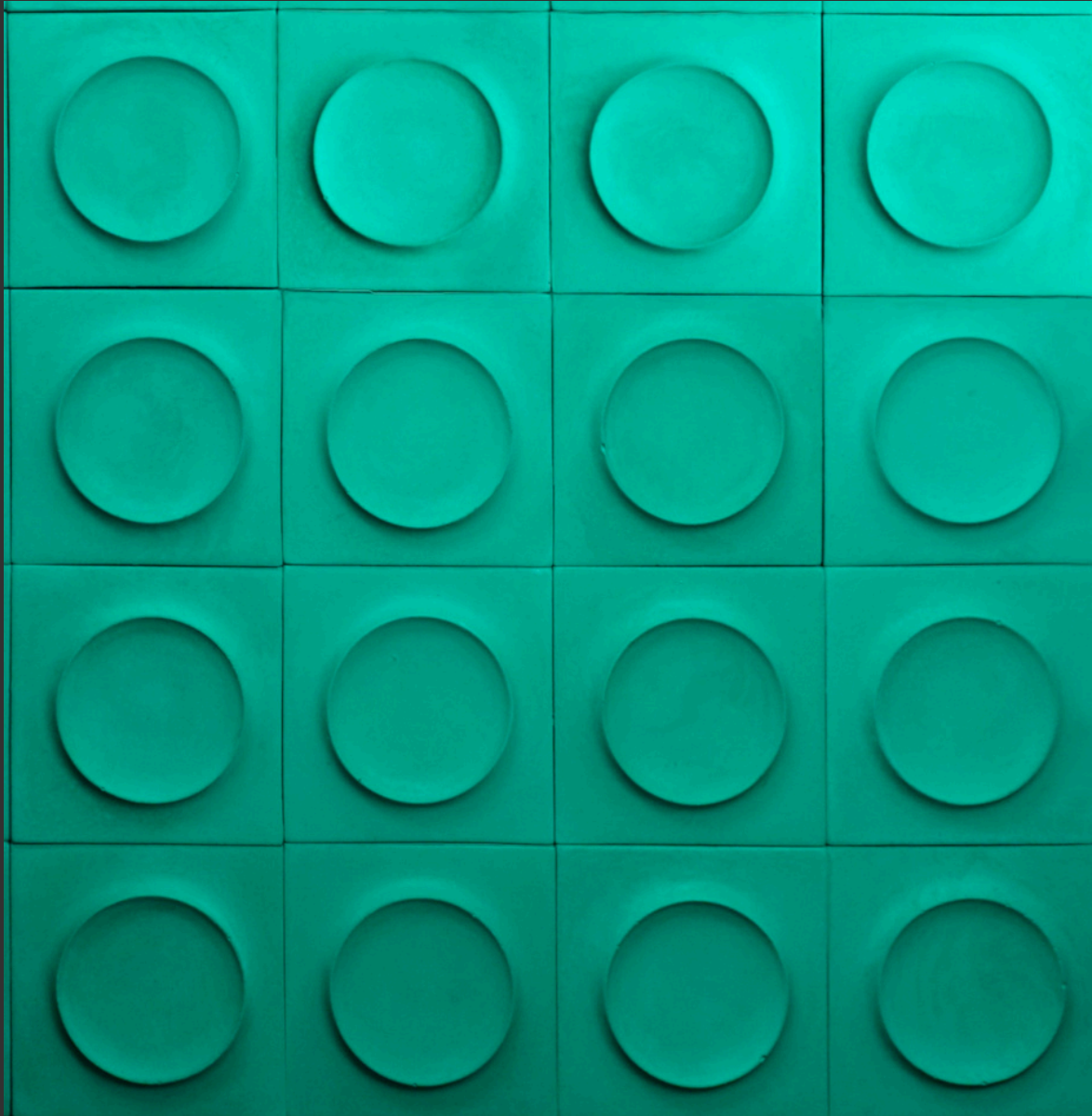
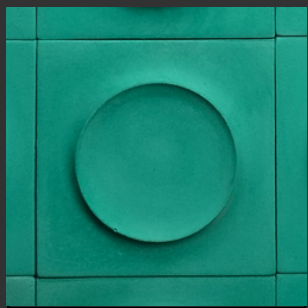
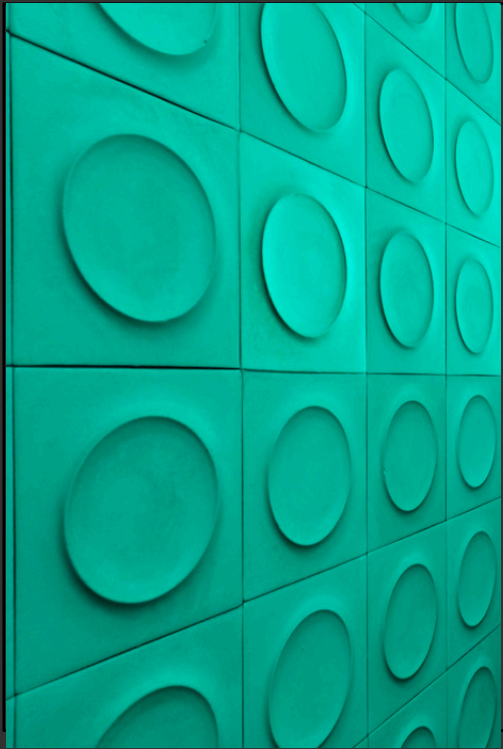
Tile



DOT SURPRISED

Colored Concrete

3D ARCHITECTURAL TILE || WALL • CEILING • FLOOR • FURNITURE



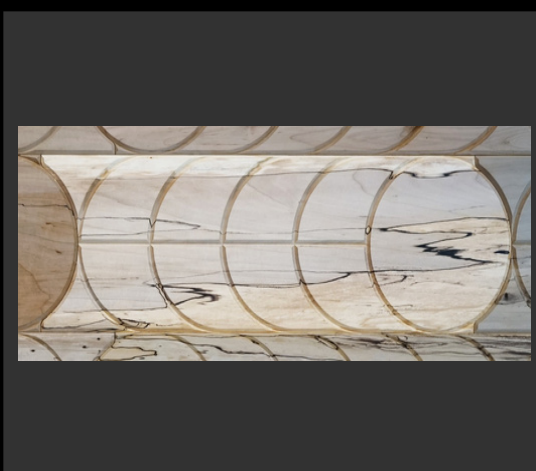
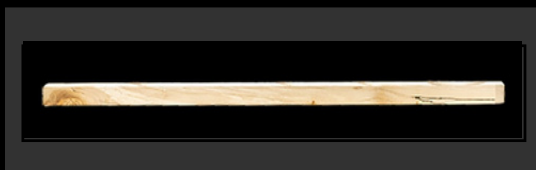
WWW.LUCILLE.STUDIO



CIRCLE IN MOTION

Spalted Maple

3D ARCHITECTURAL TILE || WALL • CEILING • FLOOR • FURNITURE



WWW.LUCILLE.STUDIO

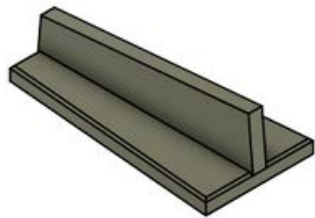
Angle Bangle - This tile combines precision and illusion to create a stunning effect. Its sharp, intersecting lines create a vertical harmony when viewed head-on, while a shift in perspective reveals dynamic diamonds and playful patterns. A sophisticated choice for spaces that demand intrigue and versatility.



ANGLE BANGLE

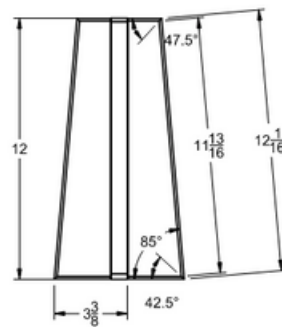
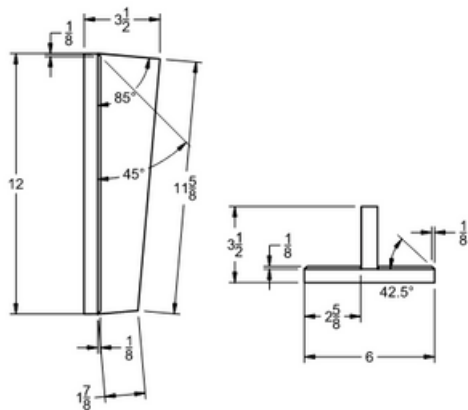
PROFILE:

FIRE RATING:
SOUND RATING:



3D VIEW
SCALE:

AXON VIEW
SCALE:



DETAIL ELEVATION
SCALE:

DETAIL PLAN
SCALE:

SHEET NAME:

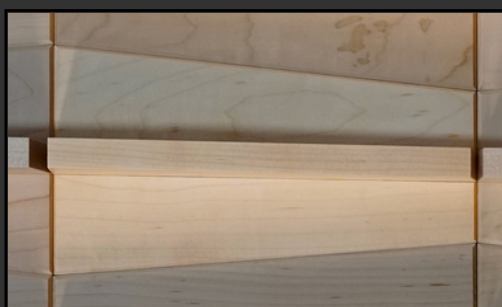
Tile



ANGLE BANGLE

Maple

3D ARCHITECTURAL TILE || WALL • CEILING • FLOOR • FURNITURE



WWW.LUCILLE.STUDIO

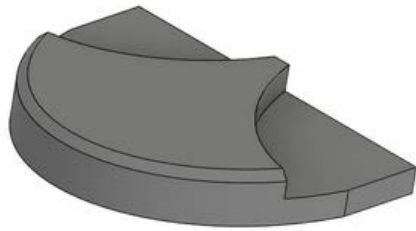
Scales - This tile features a fluid, overlapping pattern inspired by the elegance of natural forms. Its layered, curved design adds depth and movement to any surface, transforming walls and ceilings into dynamic, textural masterpieces.



SCALES

PROFILE:
Ver. 1

FIRE RATING:
SOUND RATING:

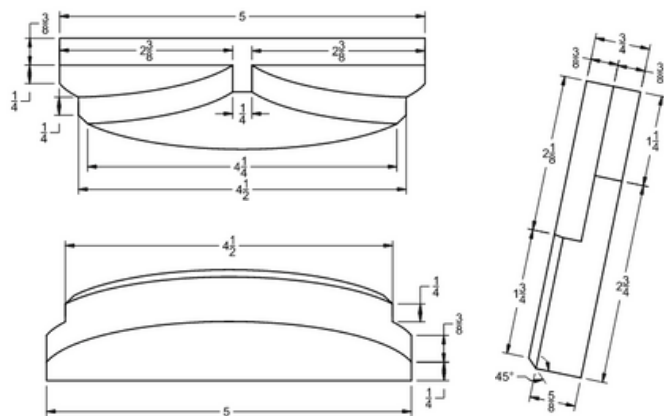


3D VIEW

SCALE:

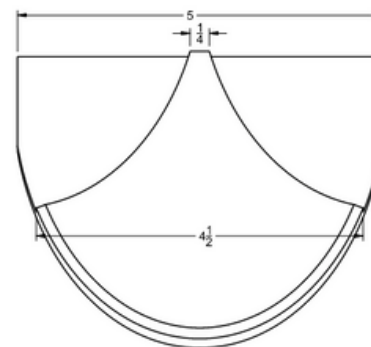
AXON VIEW

SCALE:



DETAIL ELEVATION

SCALE:



DETAIL PLAN

SCALE:

SHEET NAME:

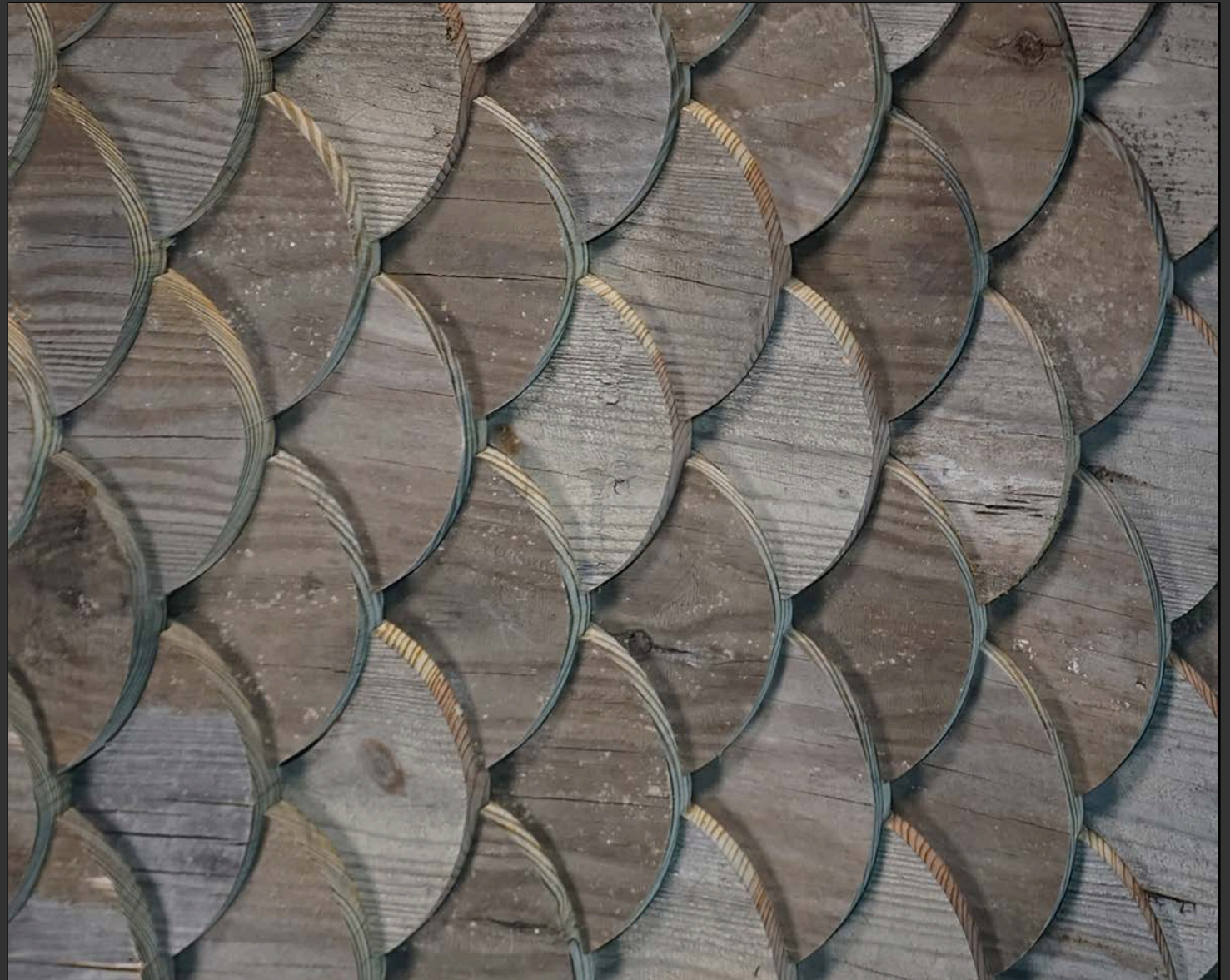
Tile



SCALES

Weathered Wood

3D ARCHITECTURAL TILE || WALL • CEILING • FLOOR • FURNITURE



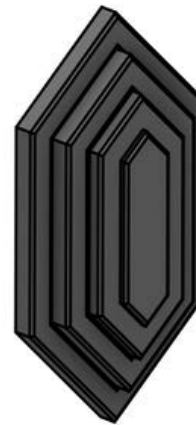
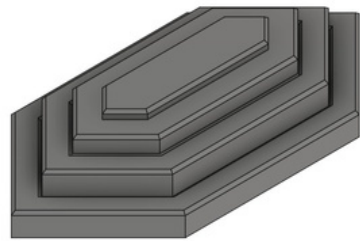
Aztec - This tile offers a versatile, multi-layered design that provides endless layout possibilities. With its intricate geometry and striking depth, this tile allows for custom configurations while maintaining its signature boldness. Whether used as a single stacked design or in creative arrangements, Aztec transforms any surface into a powerful visual statement.



AZTEC

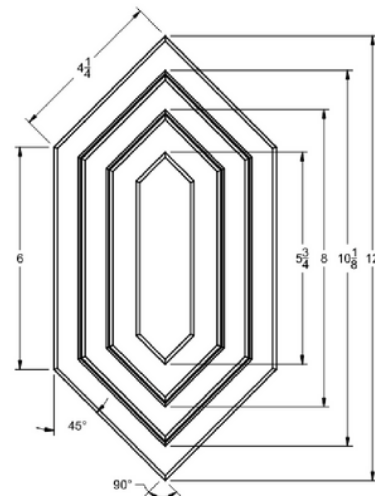
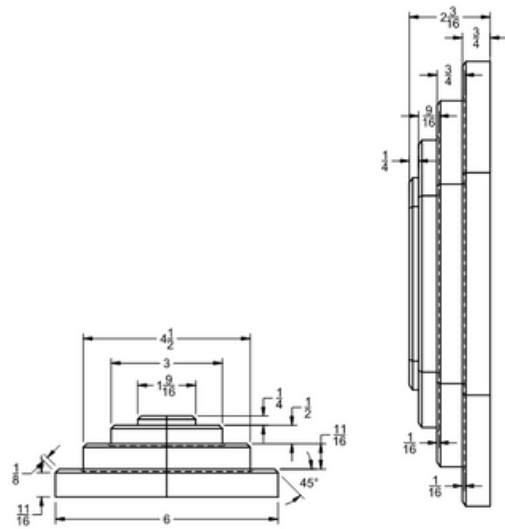
PROFILE:
Ver. 1

FIRE RATING:
SOUND RATING:



3D VIEW
SCALE:

AXON VIEW
SCALE:



DETAIL ELEVATION
SCALE:

DETAIL PLAN
SCALE:

SHEET NAME:

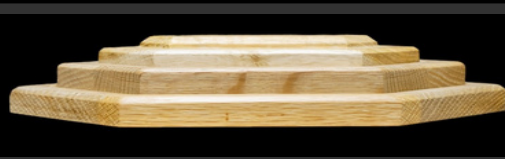
Tile



AZTEC

Bleached White Oak

3D ARCHITECTURAL TILE || WALL • CEILING • FLOOR • FURNITURE



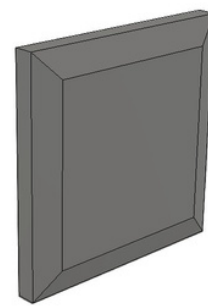
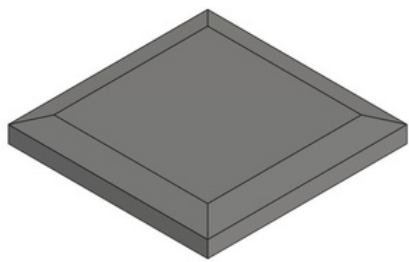
Beveled Waffle - This tile pairs cozy nostalgia with sleek modernity. Its clean, intersecting lines mimic the texture of a classic waffle while creating a bold architectural statement. A playful yet refined design for contemporary interiors.



BEVELED WAFFLE

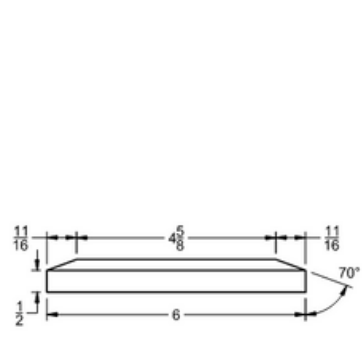
PROFILE:
ver. 1

FIRE RATING:
SOUND RATING:

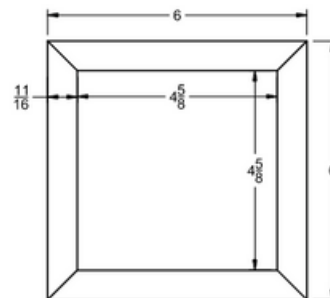


3D VIEW
SCALE:

AXON VIEW
SCALE:



DETAIL ELEVATION
SCALE:



DETAIL PLAN
SCALE:

SHEET NAME:

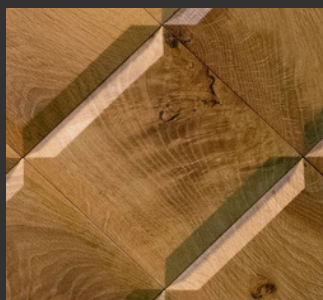
Tile



BEVELED WAFFLE

White Oak

3D ARCHITECTURAL TILE || WALL • CEILING • FLOOR • FURNITURE



WWW.LUCILLE.STUDIO

Apex Concave - This tile balances simplicity and elegance with its subtle interplay of raised and recessed edges. Light dances across its surfaces, creating depth and movement that evoke a pixelated shift in texture. Ideal for adding a refined touch to modern interiors, Apex Concave is understated yet captivating.



APEX CONCAVE

PROFILE:
Ver. 1

FIRE RATING:
SOUND RATING:

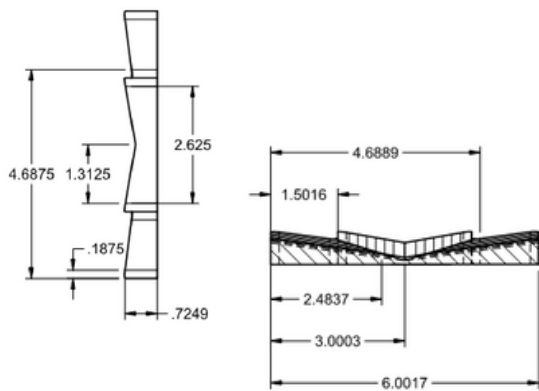


3D VIEW

SCALE:

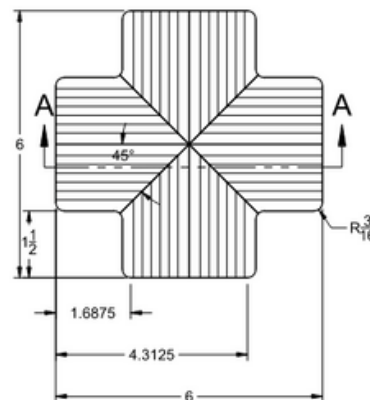
AXON VIEW

SCALE:



DETAIL ELEVATION

SCALE:



DETAIL PLAN

SCALE:

SHEET NAME:

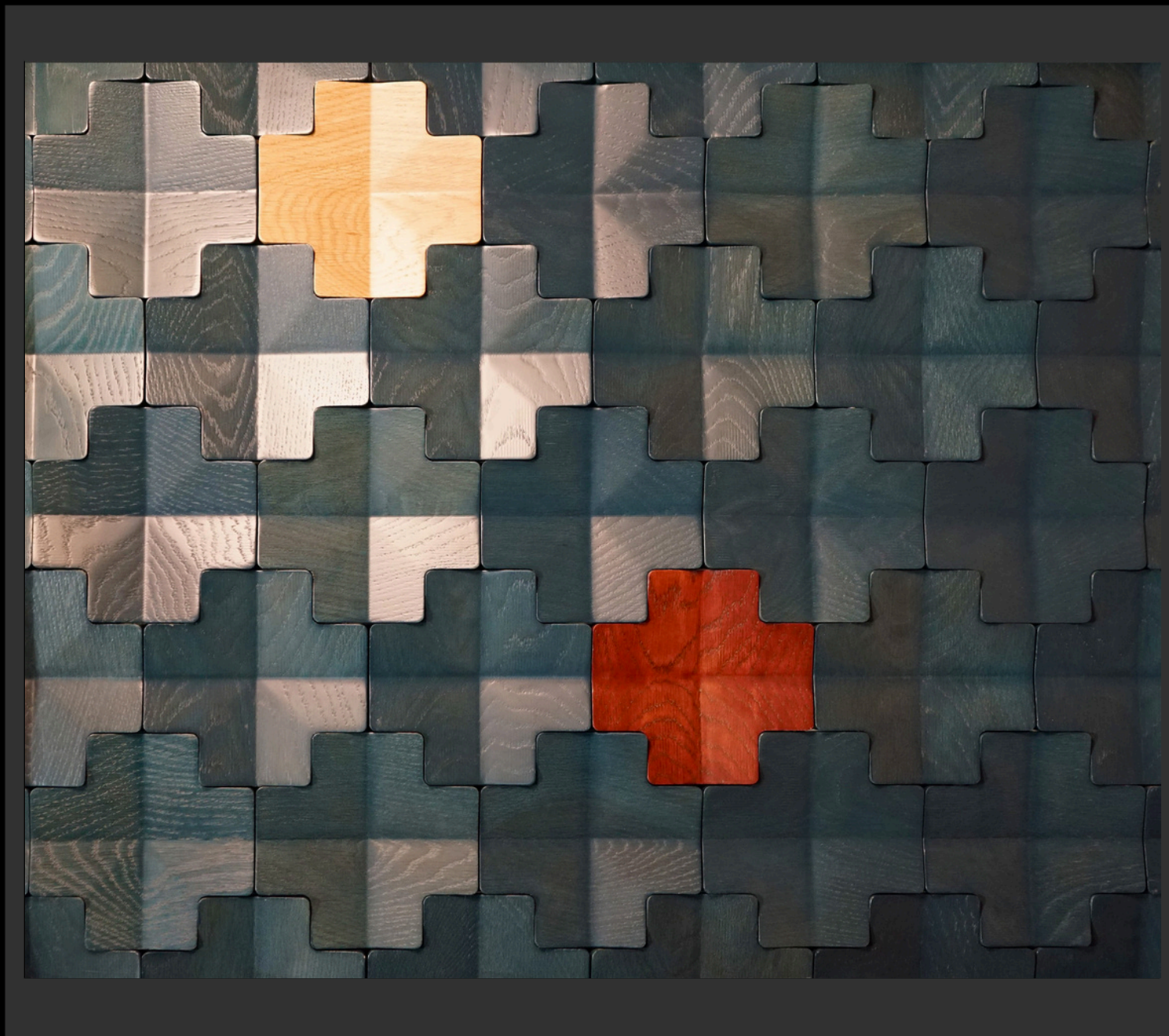
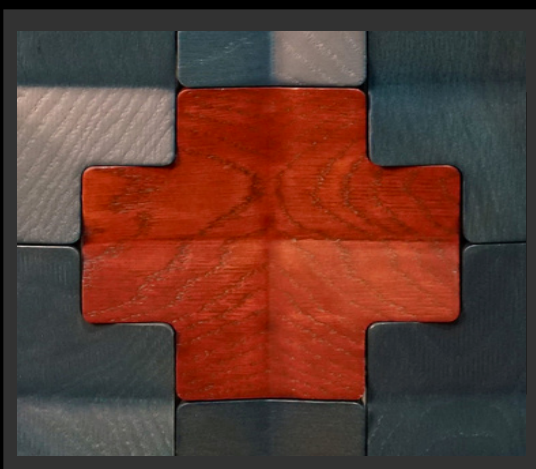
Tile



APEX CONCAVE

White Oak and Stain

3D ARCHITECTURAL TILE || WALL • CEILING • FLOOR • FURNITURE



WWW.LUCILLE.STUDIO

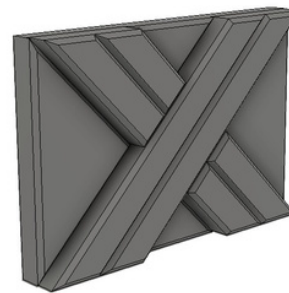
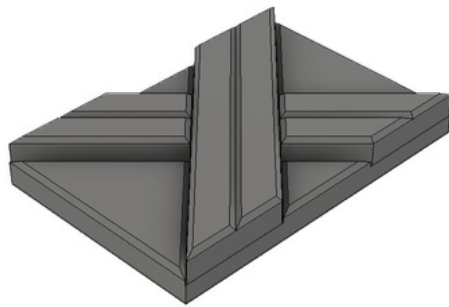
Knotty Business - This tile is a bold statement piece that brings striking geometry to life. Featuring a sleek, angular design; this tile is defined by intersecting lines and sharp contours that create depth and dynamic movement across its surface.



KNOTTY BUSINESS

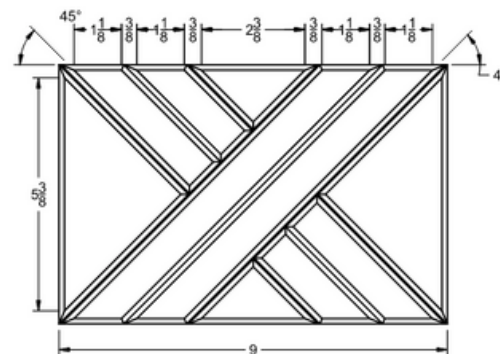
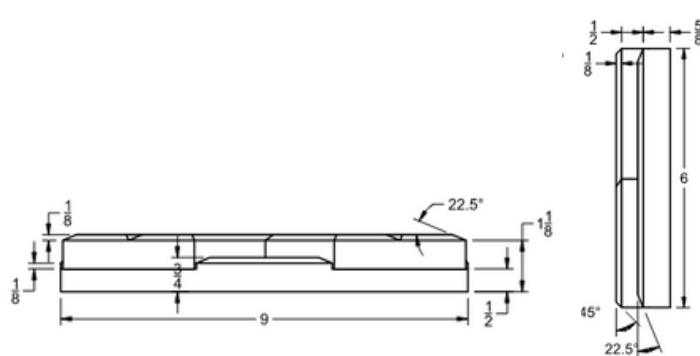
PROFILE:
Ver. 1

FIRE RATING:
SOUND RATING:



3D VIEW
SCALE:

AXON VIEW
SCALE:



DETAIL ELEVATION
SCALE:

DETAIL PLAN
SCALE:

SHEET NAME:

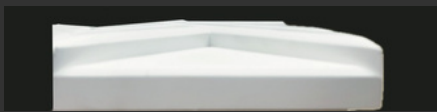
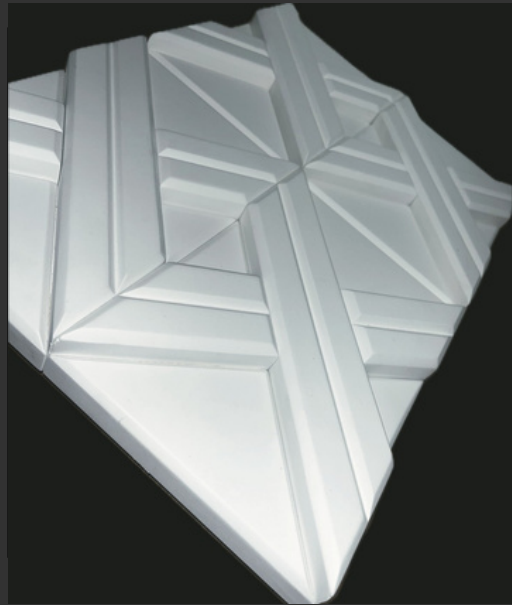
Tile



KNOTTY BUSINESS

Painted MDF

3D ARCHITECTURAL TILE || WALL • CEILING • FLOOR • FURNITURE





WAVE

Rustic Cherry

3D ARCHITECTURAL TILE || WALL • CEILING • FLOOR • FURNITURE



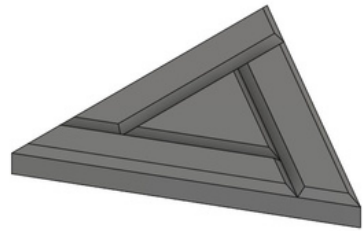
Escher 2D - This tile explores geometric sophistication through its interplay of angled lines and recessed shapes. The result is a visually dynamic surface that evokes movement and depth, adding a modern edge to walls, ceilings, and furniture.



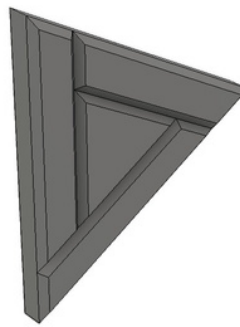
ESCHER 2D

PROFILE:
Ver. 1

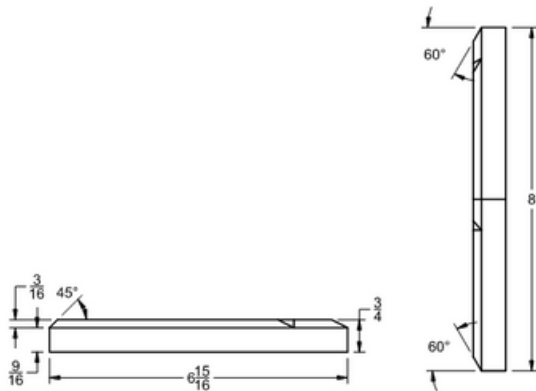
FIRE RATING:
SOUND RATING:



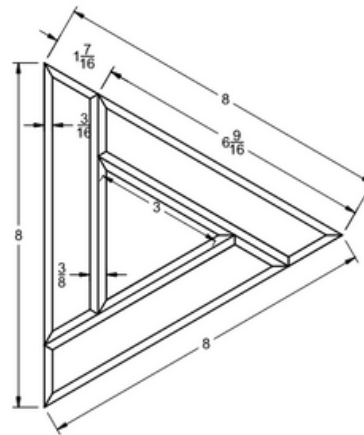
3D VIEW
SCALE:



AXON VIEW
SCALE:



DETAIL ELEVATION
SCALE:



DETAIL PLAN
SCALE:

SHEET NAME:

Tile



ESCHER 2D

White Oak

3D ARCHITECTURAL TILE || WALL • CEILING • FLOOR • FURNITURE



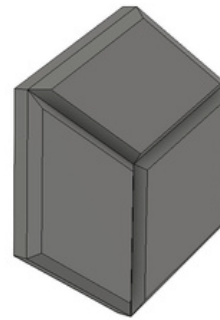
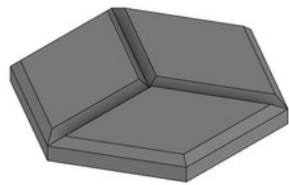
Escher Hex- This tile mesmerizes with its optical illusion of interlocking hexagonal forms. This versatile tile transforms walls, ceilings, or floors into captivating visual experiences, making your space a destination of intrigue and design excellence.



ESCHER HEX

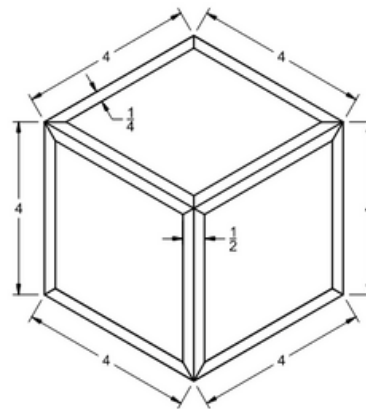
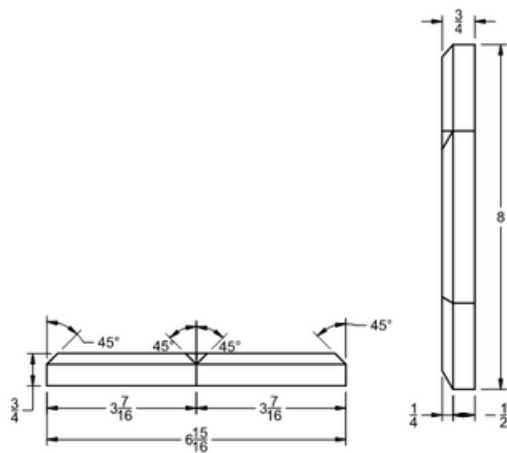
PROFILE:
Ver. 1

FIRE RATING:
SOUND RATING:



3D VIEW
SCALE:

AXON VIEW
SCALE:



DETAIL ELEVATION
SCALE:

DETAIL PLAN
SCALE:

SHEET NAME:

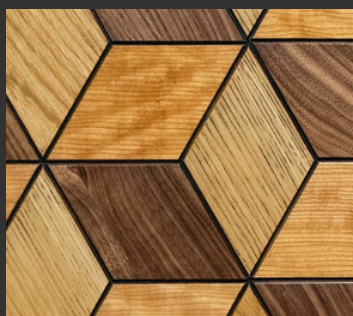
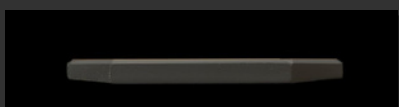
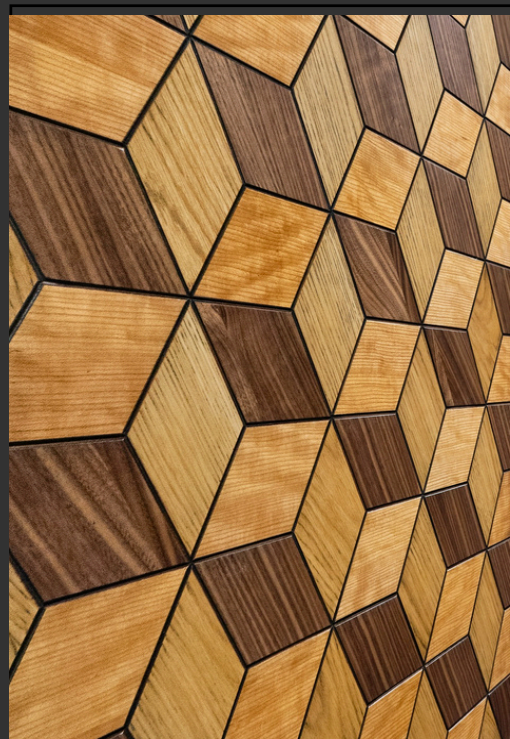
Tile



ESCHER ΦEX

Walnut, Cherry, White Oak

3D ARCHITECTURAL TILE || WALL • CEILING • FLOOR • FURNITURE



WWW.LUCILLE.STUDIO

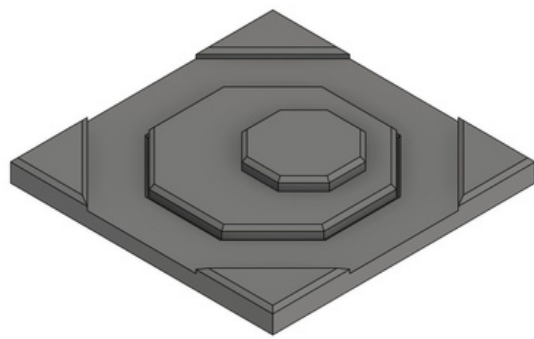
Amelia - This tile is a celebration of clean lines and geometric shapes, it creates a striking visual impact. The interplay of octagons and triangles creates a dynamic pattern that enhances the richness and elegance of any space.



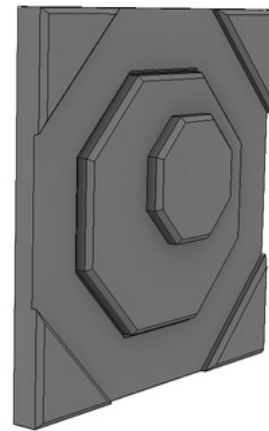
AMELIA

PROFILE:
Ver. 1

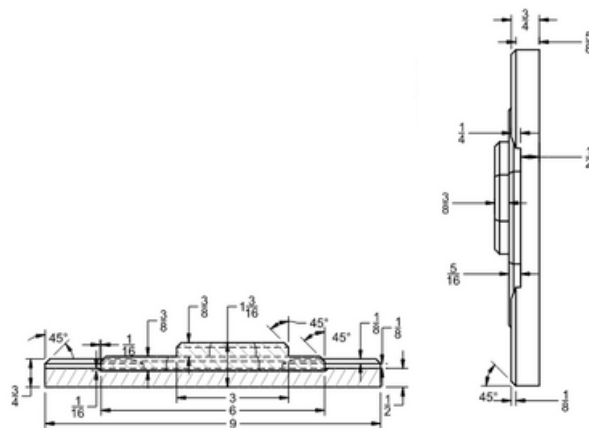
FIRE RATING:
SOUND RATING:



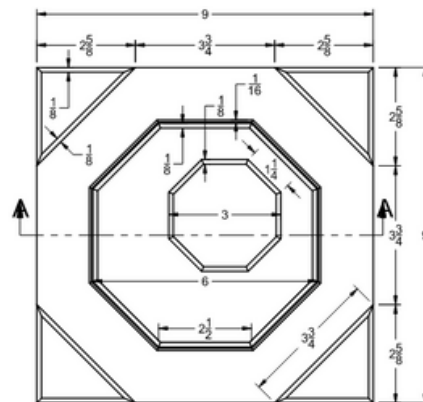
3D VIEW
SCALE:



AXON VIEW
SCALE:



DETAIL ELEVATION
SCALE:



DETAIL PLAN
SCALE:

SHEET NAME:

Tile



AMELIA

Painted MDF

3D ARCHITECTURAL TILE || WALL • CEILING • FLOOR • FURNITURE



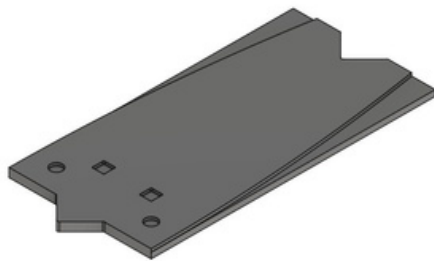
Glasgow - This tile is made up of clean lines and geometric shapes, it creates a striking visual impact. The interplay of octagons and triangles creates a dynamic pattern that adds depth and sophistication to any space.



GLASGOW

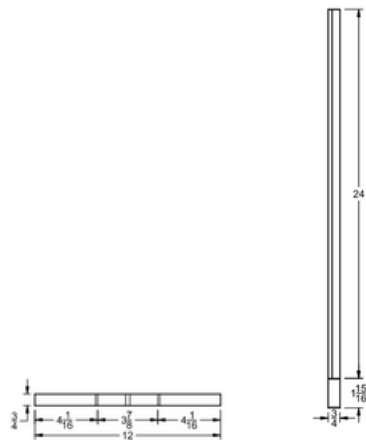
PROFILE:
Ver.1

FIRE RATING:
SOUND RATING:

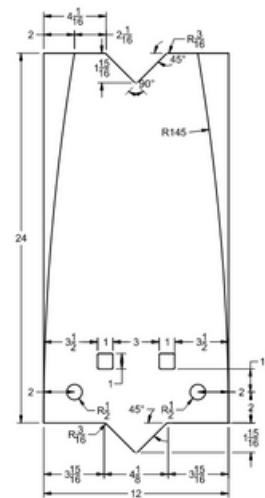


3D VIEW
SCALE:

AXON VIEW
SCALE:



DETAIL ELEVATION
SCALE:



DETAIL PLAN
SCALE:

SHEET NAME:

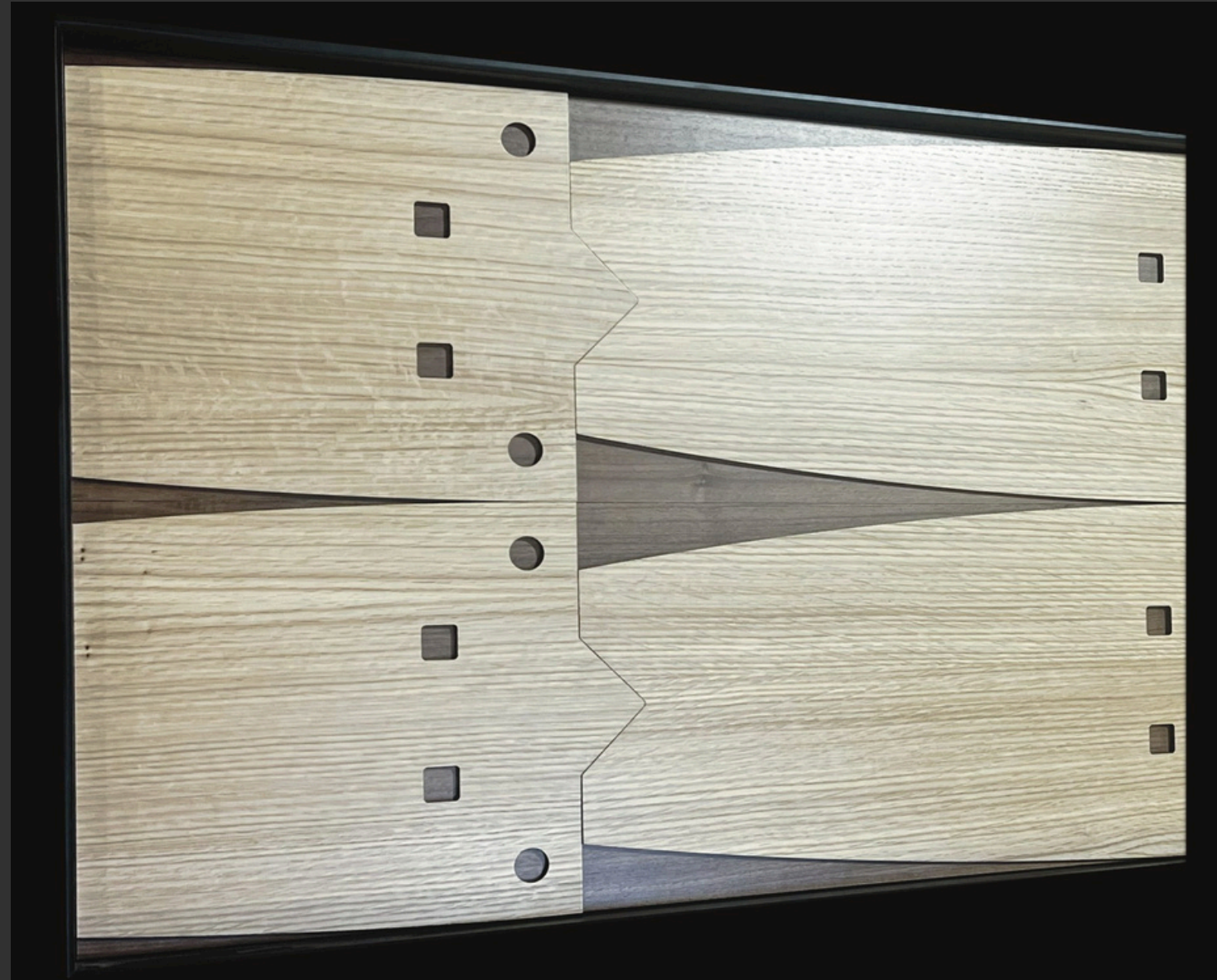
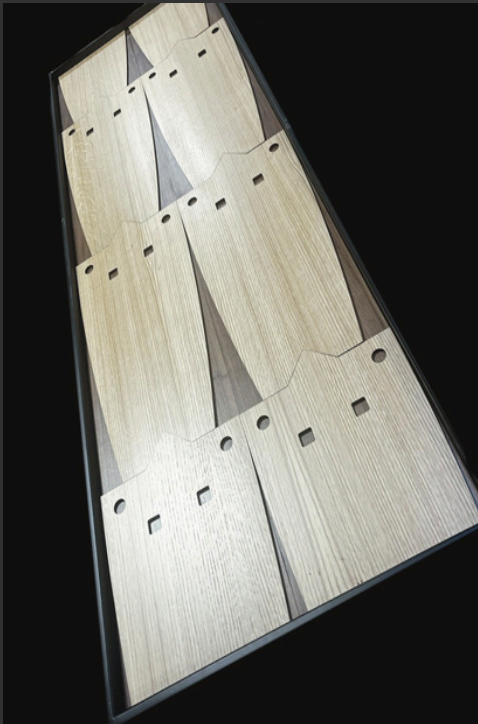
Tile



GLASGOW

Walnut, White Oak

3D ARCHITECTURAL TILE || WALL • CEILING • FLOOR • FURNITURE



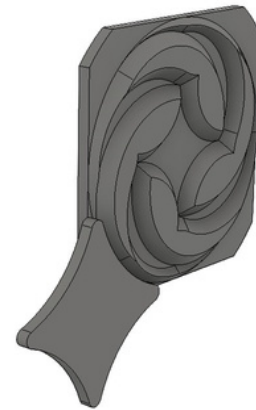
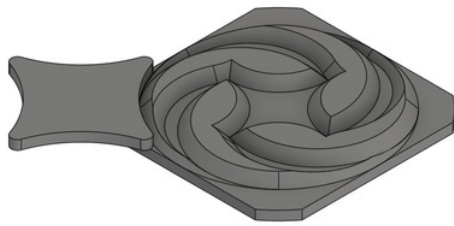
Bloom - This tile is inspired by the delicate unfurling of a flower, it adds a touch of organic elegance to any space. Its intricate swirling pattern creates a sense of movement and depth, bringing life to your walls.



BLOOM

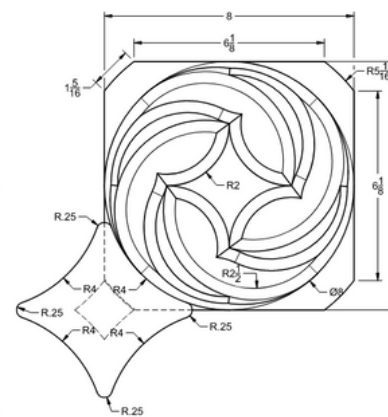
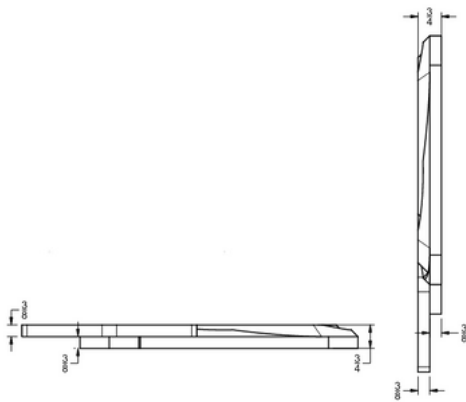
PROFILE:
Ver. 1

FIRE RATING:
SOUND RATING:



3D VIEW
SCALE:

AXON VIEW
SCALE:



DETAIL ELEVATION
SCALE:

DETAIL PLAN
SCALE:

SHEET NAME:

Tile



BLOOM

Painted MDF

3D ARCHITECTURAL TILE || WALL • CEILING • FLOOR • FURNITURE

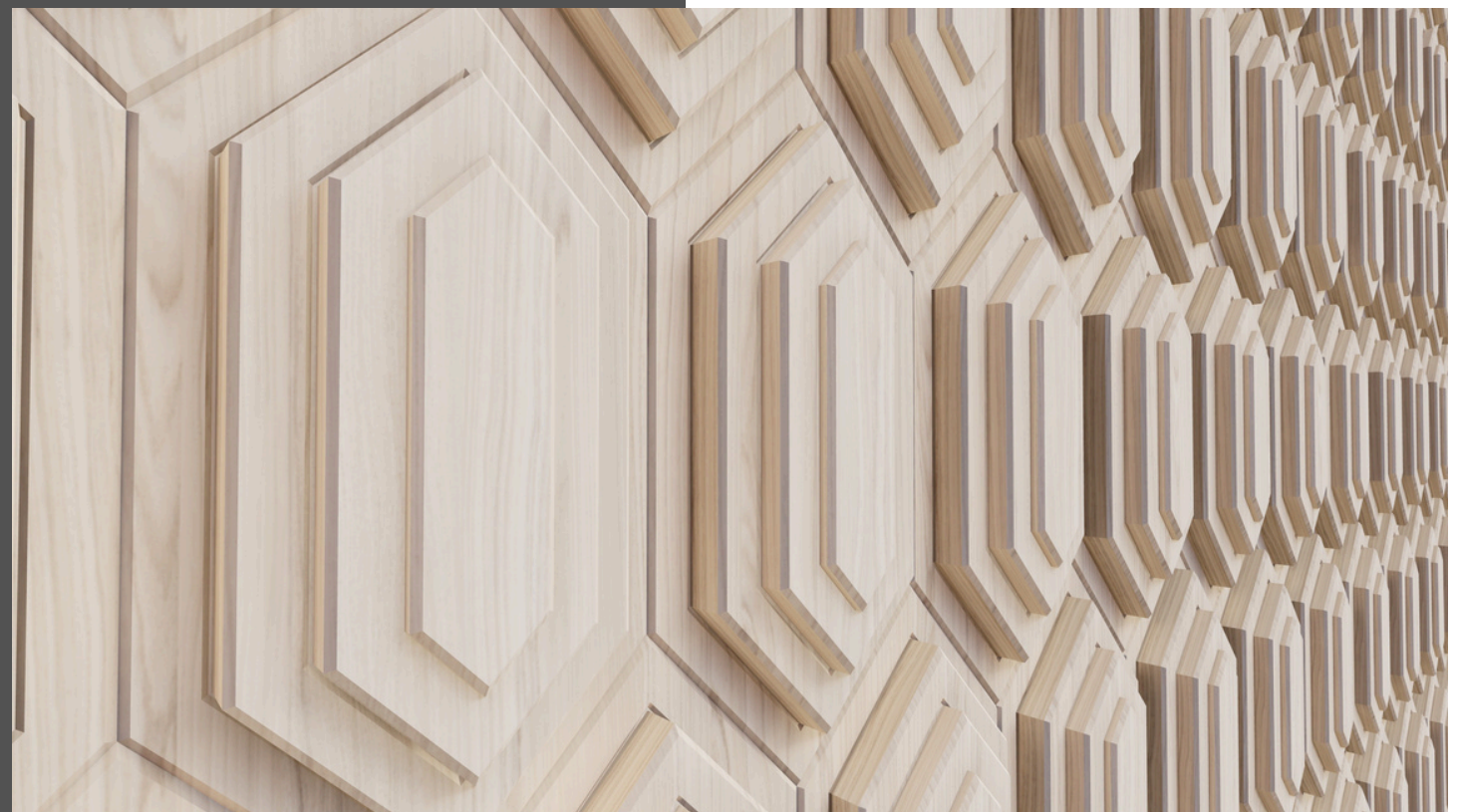


WWW.LUCILLE.STUDIO



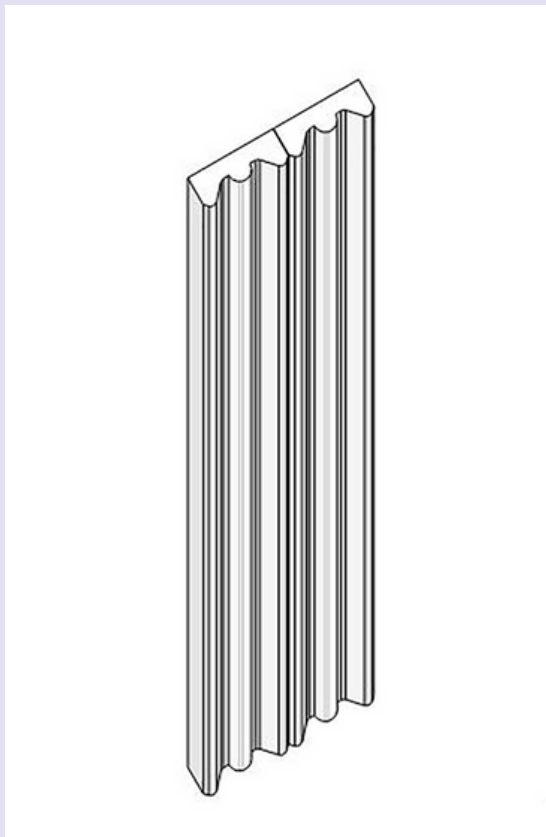
Aztec in Maple

**BOLD
PATTERNS.
BOUNDLESS
CREATIVITY.**

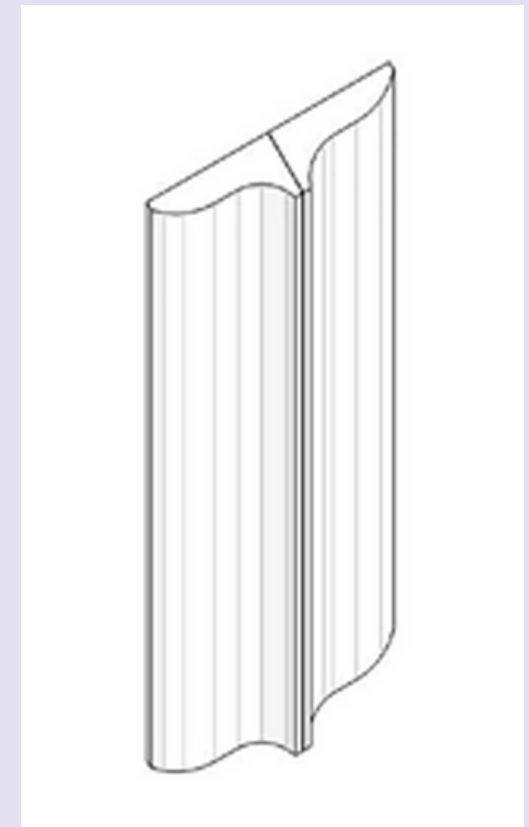


TAMBOUR

Custom-crafted tambour to suit your vision,
down to the smallest detail.



Rook



Optimist

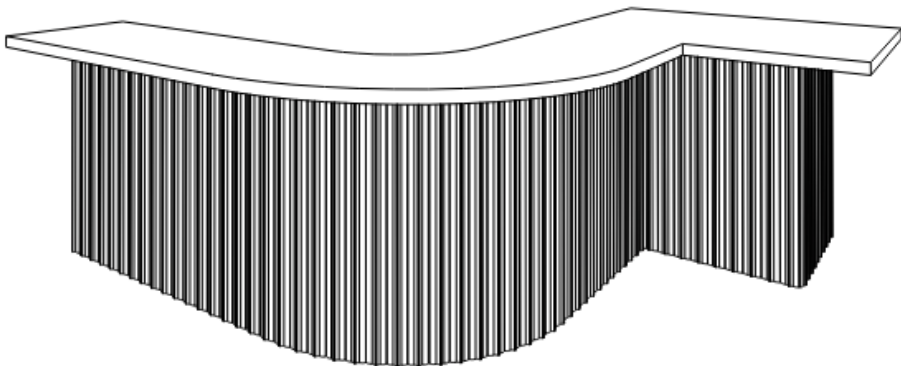
Optimist 1 and 2 - This tambour is a celebration of smooth, uplifting curves, and balanced symmetry. Its gentle arcs create a sense of optimism and lightness, evoking a fresh, harmonious aesthetic. Whether used as a statement on walls, ceilings, or furniture, Optimist 1 and 2 brings an inviting energy to any space; making it a versatile and timeless addition to your design vision.



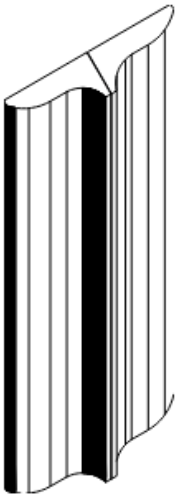
OPTIMIST 1

PROFILE: #1
 -One part process
 -Mirror repeat of profile

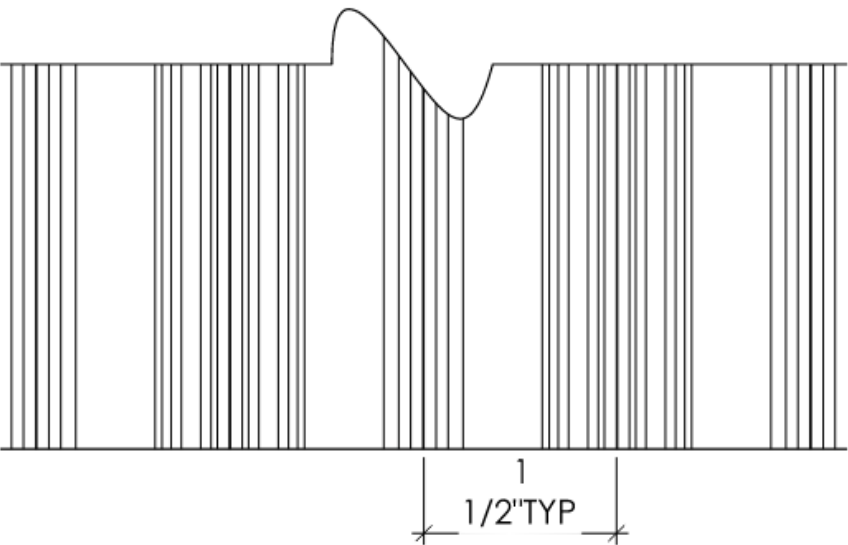
FIRE RATING:
 SOUND RATING:



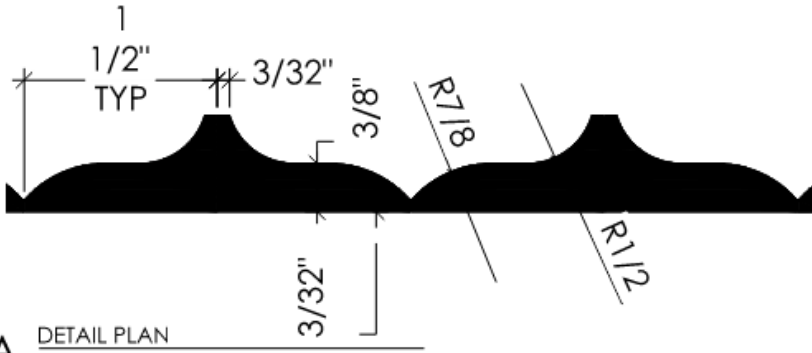
3 OPTIMIST 1 3D VIEW
 SCALE: NOT TO SCALE



2 OPTIMIST 1 AXON VIEW
 SCALE: NOT TO SCALE



1 DETAIL ELEVATION
 SCALE: 12" = 1'-0"



A DETAIL PLAN
 SCALE: 12" = 1'-0"

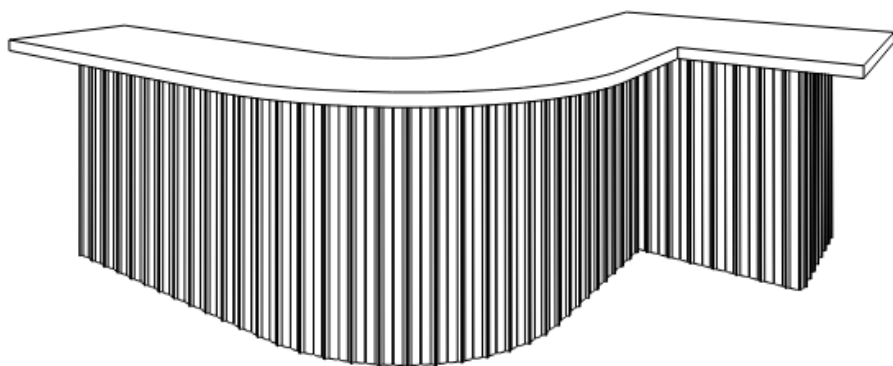
SHEET NAME:



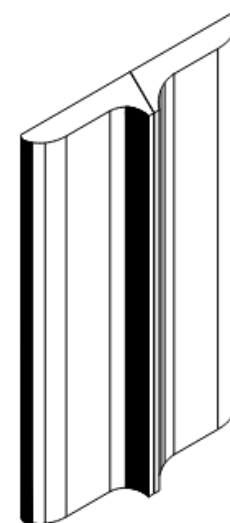
OPTIMIST 2

PROFILE: #2
 -One part process
 -Mirror repeat of profile

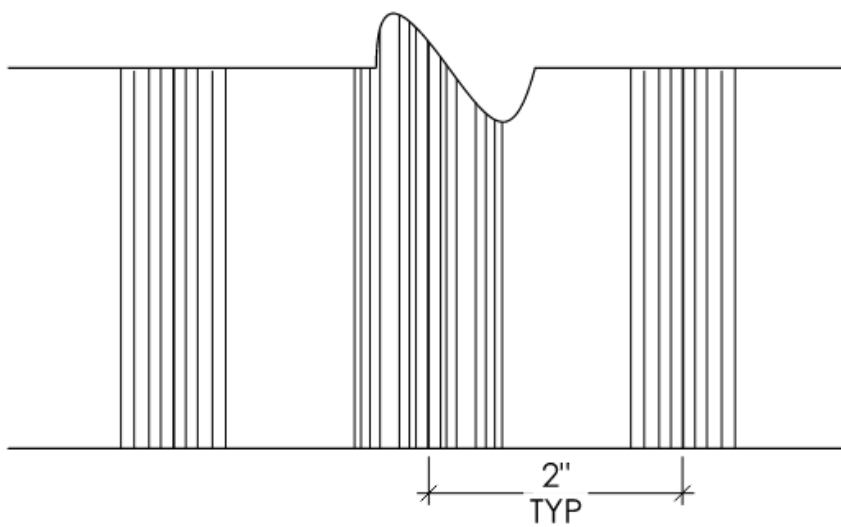
FIRE RATING:
 SOUND RATING:



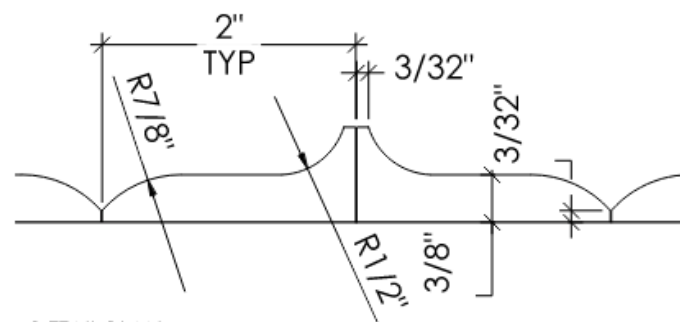
3 OPTIMIST 2 3D VIEW
 SCALE: NOT TO SCALE



2 OPTIMIST 2 AXON VIEW
 SCALE: NOT TO SCALE



1 DETAIL ELEVATION
 SCALE: 12" = 1'-0"



A DETAIL PLAN
 SCALE: 12" = 1'-0"

SHEET NAME:

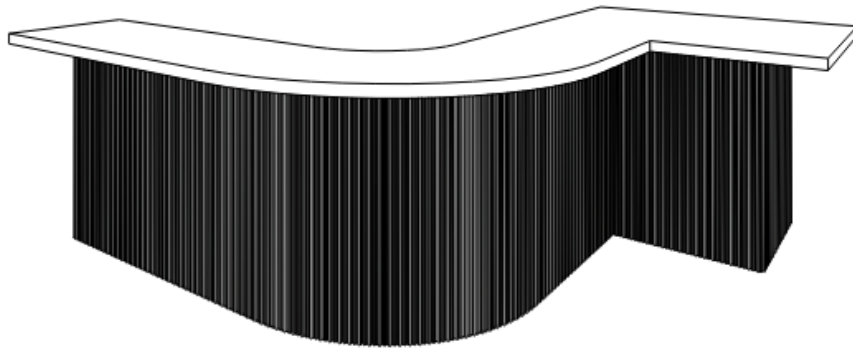
Chess - This tambour evokes a sense of strategic elegance with its alternating pattern of tall and short elements. Like the pieces on a chessboard, the design creates a captivating interplay of light and shadow; adding depth and dimension to any space. The rhythmic arrangement of elements creates a sense of movement and dynamism, drawing the eye and adding a touch of sophistication to the overall aesthetic. Whether used to create a focal point or a subtle textural backdrop, Chess effortlessly complements a range of interior styles, from modern to traditional.



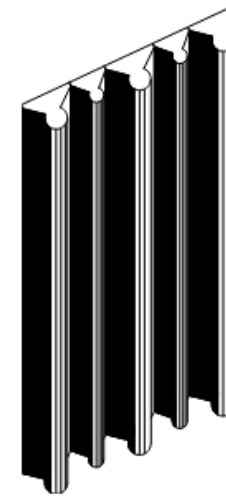
CHESS

PROFILE: #3
 -Two part process
 -Alternate repeat of profiles

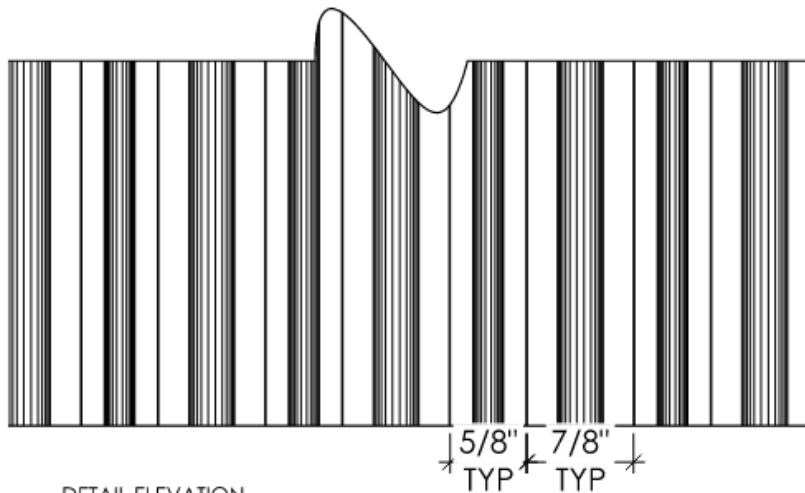
FIRE RATING:
 SOUND RATING:



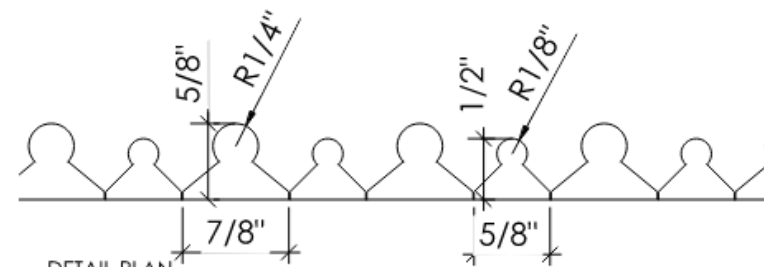
3 CHESS 3D VIEW
 SCALE: NOT TO SCALE



2 CHESS AXON VIEW
 SCALE: NOT TO SCALE



1 DETAIL ELEVATION
 SCALE: 12" = 1'-0"



A DETAIL PLAN
 SCALE: 12" = 1'-0"

SHEET NAME:

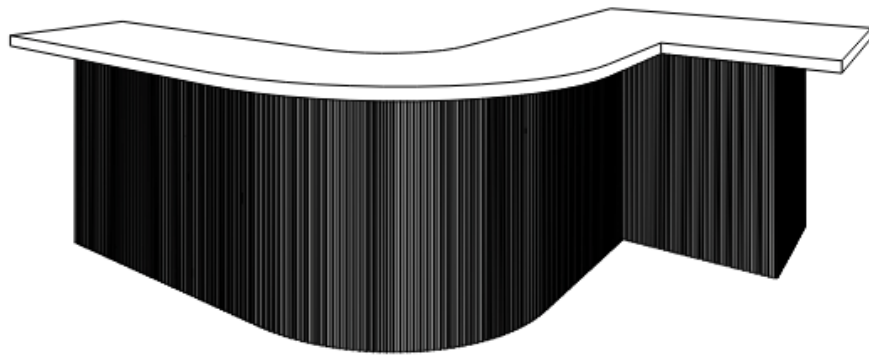
Rook - This tambour design evokes a sense of playful energy with its dynamic, undulating pattern. Like a flock of birds in flight, the vertical elements create a sense of movement and rhythm; adding a touch of whimsy and sophistication to any space. The interplay of solid and void creates a captivating visual texture; drawing the eye and adding depth to the overall aesthetic. Whether used to create a focal point or a subtle textural backdrop, Rook effortlessly complements a range of interior styles, from modern to eclectic.



ROOK

PROFILE: #4
 -One part process
 -Repeat of profile

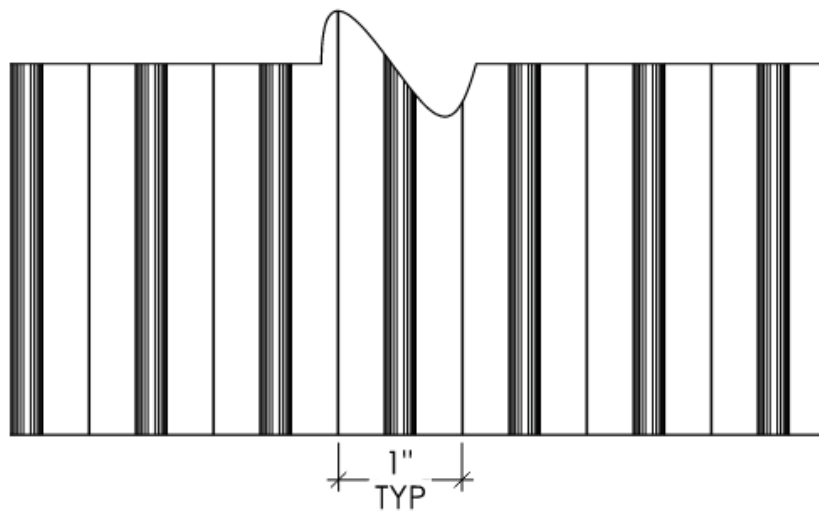
FIRE RATING:
 SOUND RATING:



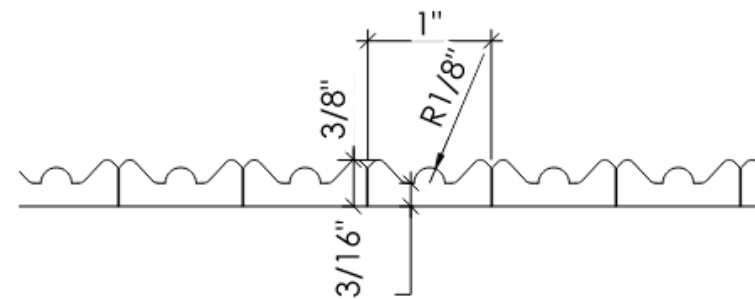
3 ROOK 3D VIEW
 SCALE: NOT TO SCALE



2 ROOK AXON VIEW
 SCALE: NOT TO SCALE



1 DETAIL ELEVATION
 SCALE: 12" = 1'-0"



A DETAIL PLAN
 SCALE: 12" = 1'-0"

SHEET NAME:

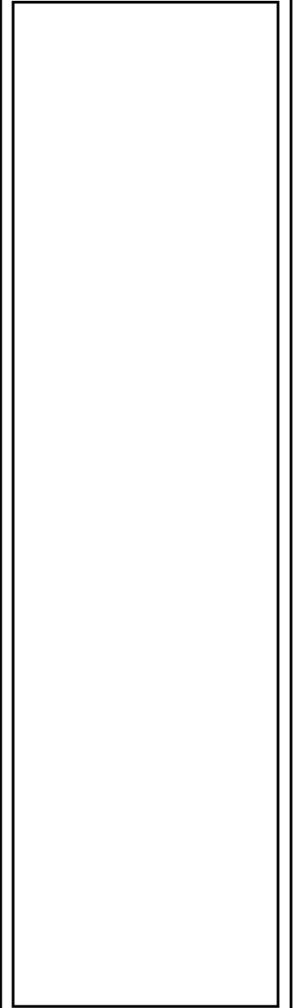
Plaid - This tambour weaves a captivating story with its intersecting lines and classic grid structure. Like a well-tailored garment, this design exudes an air of refined elegance; bringing a touch of heritage and warmth to any space. The interplay of lines and squares creates a visual rhythm, adding depth and dimension to the overall aesthetic. Whether used to create a focal point or a subtle textural backdrop, Plaid effortlessly complements a range of interior styles, from traditional to contemporary.



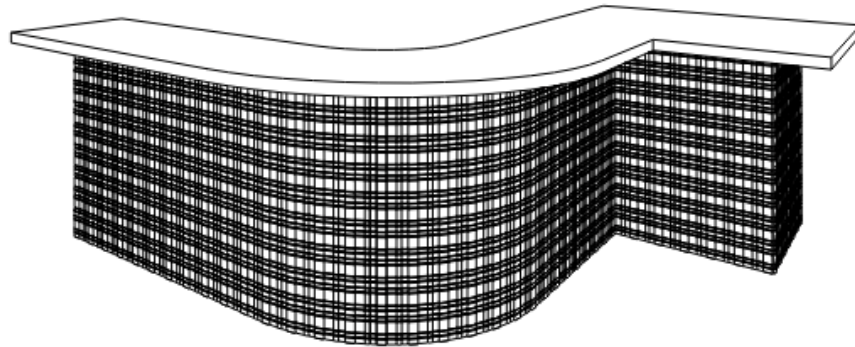
PLAID

PROFILE: #6
 -Two part process
 -Four piece profile repeat
 -Route pattern repeat perpendicular to profiles

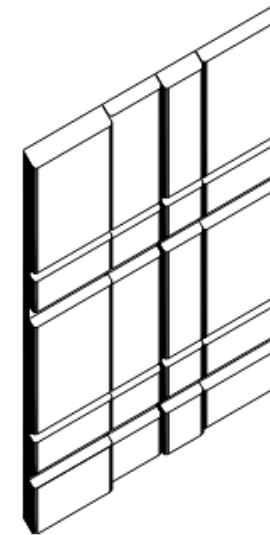
FIRE RATING:
 SOUND RATING:



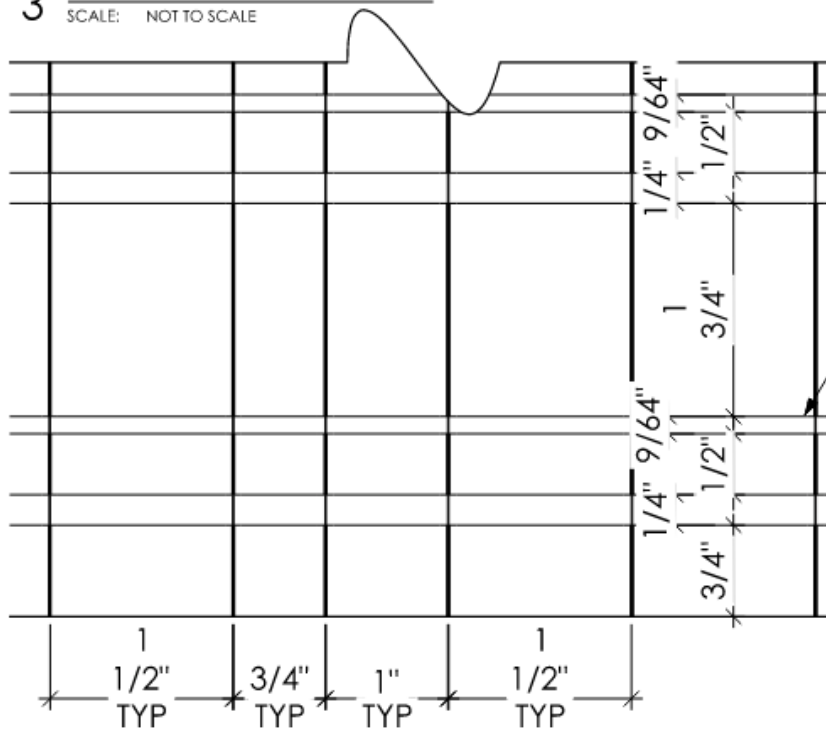
SHEET NAME:



3 PLAID 3D VIEW
 SCALE: NOT TO SCALE

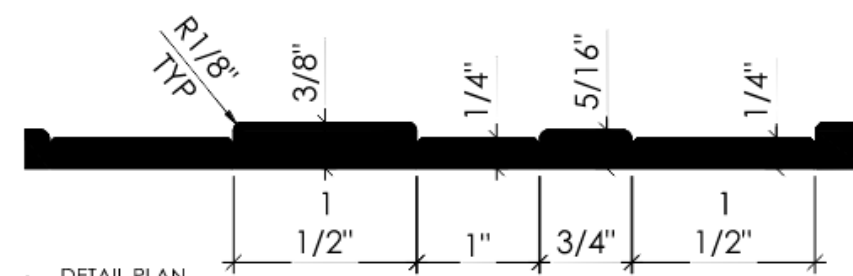


2 PLAID AXON VIEW
 SCALE: 6" NOT TO SCALE



1 DETAIL ELEVATION
 SCALE: 12" = 1'-0"

PERPENDICULAR ROUTE PATTERN ACROSS PROFILE REPEATS



A DETAIL PLAN
 SCALE: 12" = 1'-0"

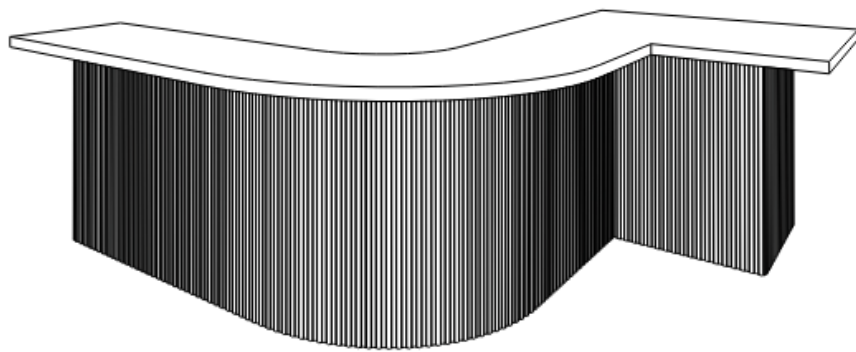
Landscape - This tambour captures the flowing contours and gentle rhythms of rolling hills and valleys. Its alternating profile creates a seamless play of light and shadow, evoking a sense of natural movement and tranquility. Whether used on curved surfaces, walls, or furniture, Landscape transforms any space into a harmonious reflection of nature's artistry, inviting warmth and elegance into your design.



LANDSCAPE

PROFILE: #5
 -Two part process
 -Alternate repeat of profiles

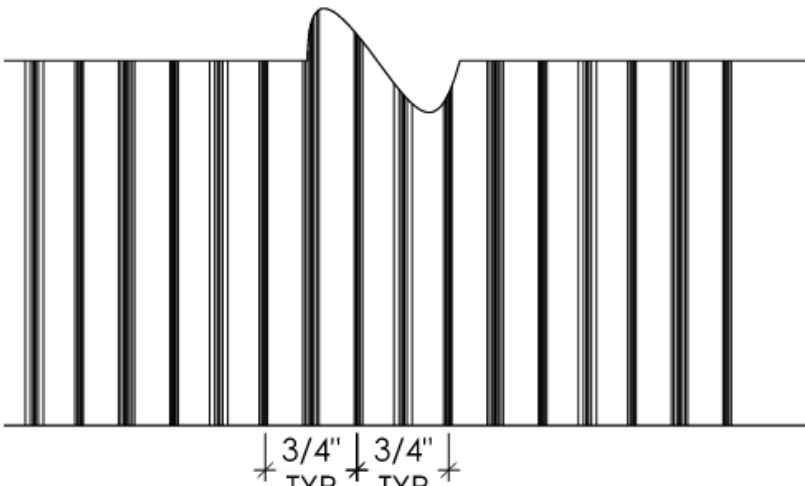
FIRE RATING:
 SOUND RATING:



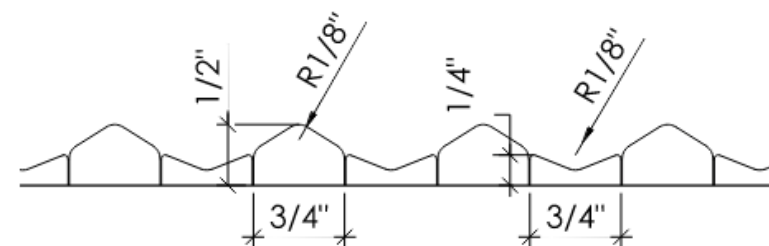
3 LANDSCAPE 3D VIEW
 SCALE: NOT TO SCALE



2 LANDSCAPE AXON VIEW
 SCALE: NOT TO SCALE



1 DETAIL ELEVATION
 SCALE: 12" = 1'-0"



A DETAIL PLAN
 SCALE: 12" = 1'-0"

SHEET NAME:

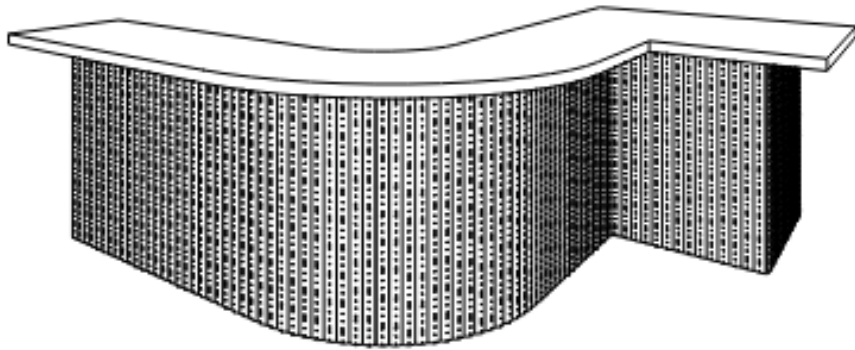
Buttons - This tambour design introduces a modern, textural effect with precise vertical grooves and recessed oval details that resemble buttons. This two-part process design creates a sleek and rhythmic pattern; perfect for adding dimension to walls, cabinetry, or furniture. Its distinct repeating elements, combined with shifts in board alignment, allow for a stepped visual flow; making it a versatile and stylish choice for contemporary interiors.



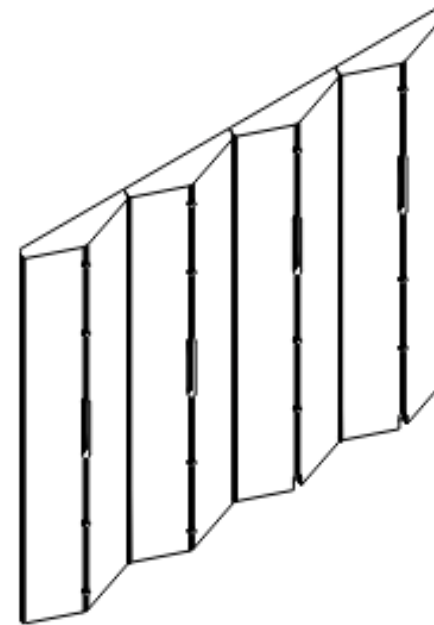
BUTTONS

PROFILE: #7
 -Two part process
 -Repeat of profile
 -Route patter vertically in profile
 -Shift board vertically to get a stepped pattern

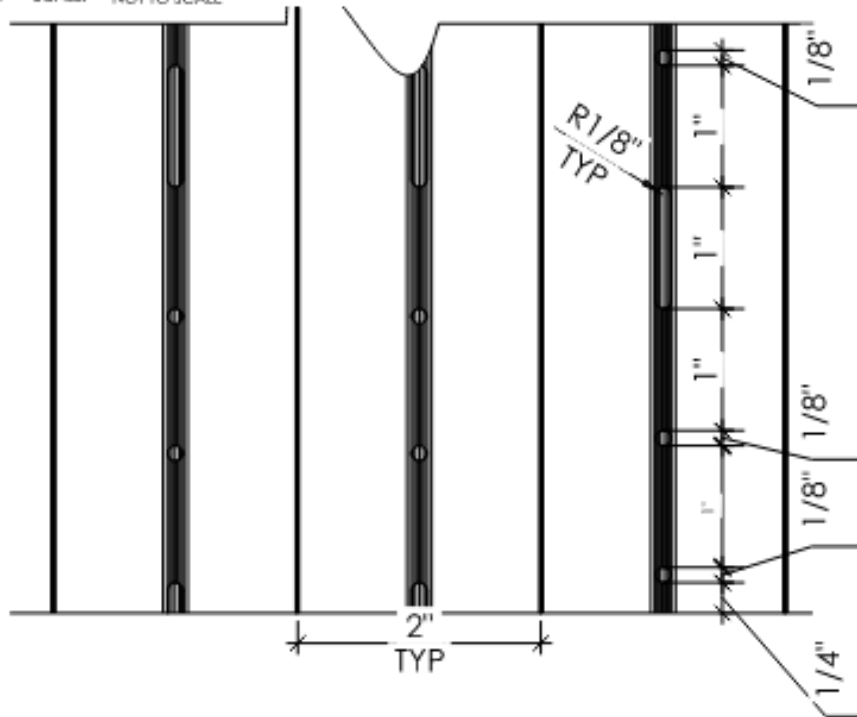
FIRE RATING:
 SOUND RATING:



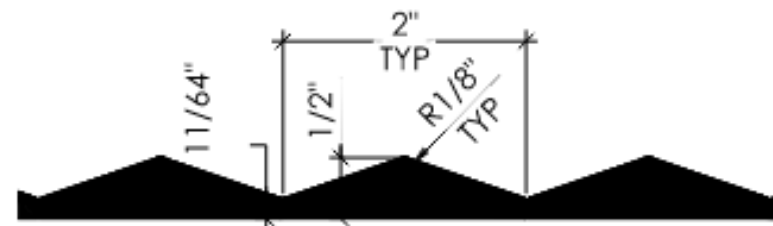
3 BUTTONS 3D VIEW
 SCALE: NOT TO SCALE



2 BUTTONS AXON VIEW
 SCALE: NOT TO SCALE



1 DETAIL ELEVATION
 SCALE: 12" = 1'-0"



A DETAIL PLAN
 SCALE: 12" = 1'-0"

SHEET NAME:

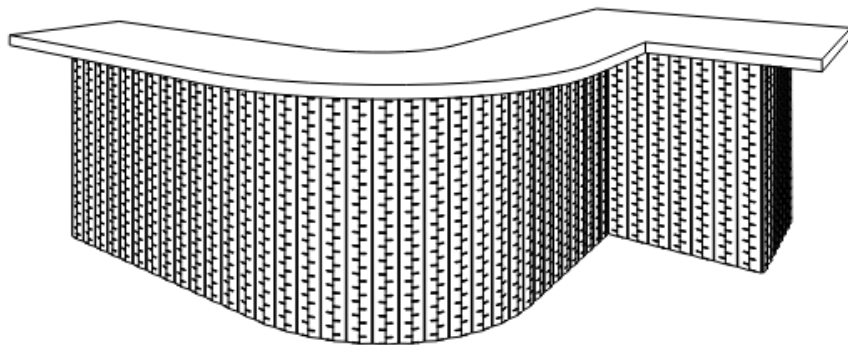
Zipper - This tambour design is a dynamic and textured panel, distinguished by its angular and interlocking pattern that creates a bold visual rhythm. Its distinct design features alternating profiles that form a "zipper-like" effect, adding depth and interest to any surface. Zipper is perfect for spaces seeking a modern edge, whether as a statement wall, furniture cladding, or ceiling treatment, it provides a structured yet playful architectural detail.



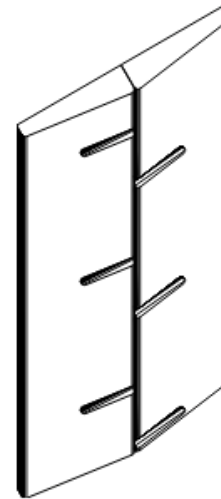
ZIPPER

PROFILE: #8
 -Two part process
 -Mirror repeat of profile
 -Route pattern repeat perpendicular to profiles

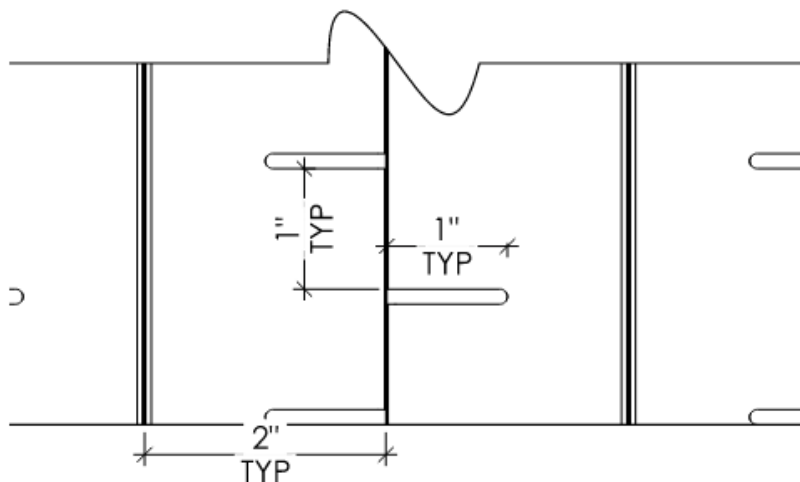
FIRE RATING:
 SOUND RATING:



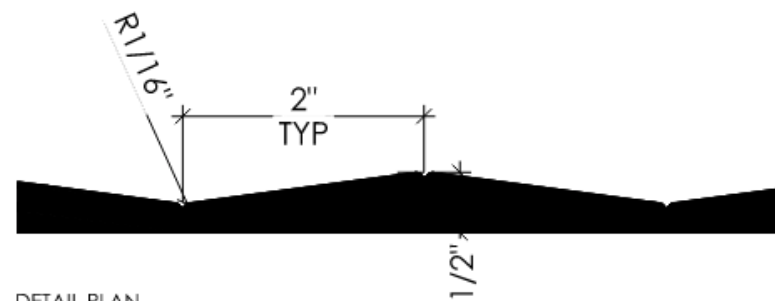
3 ZIPPER 3D VIEW
 SCALE: NOT TO SCALE



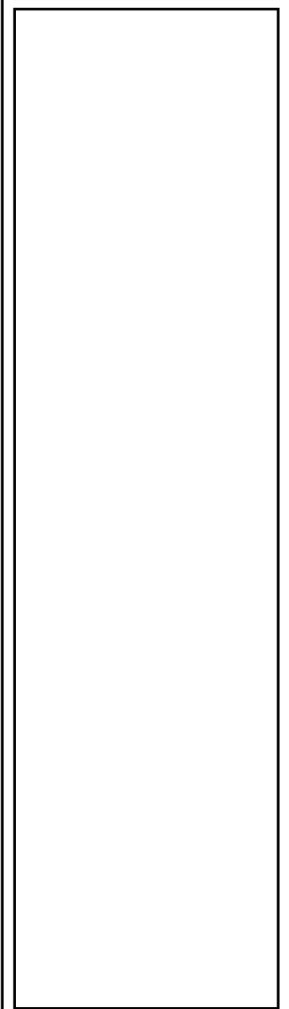
2 ZIPPER AXON VIEW
 SCALE: NOT TO SCALE



1 DETAIL ELEVATION
 SCALE: 12" = 1'-0"



A DETAIL PLAN
 SCALE: 12" = 1'-0"



SHEET NAME:

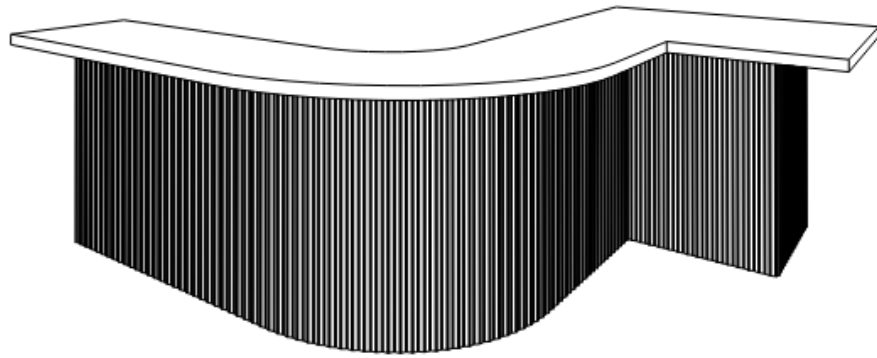
Snap 1 and 2 - This tambour design is defined by its clean, linear profile and contemporary simplicity. With its minimalistic yet striking lines, Snap 1 and 2 offers a refined texture that enhances both modern and transitional interiors with either curved or square connection points. Its balanced proportions and smooth repetition make it an ideal choice for applications where subtle sophistication is key, such as accent walls, ceilings, or bespoke furniture elements.



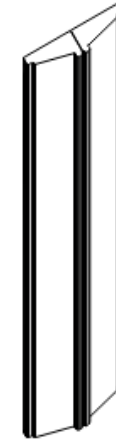
SNAP 1

PROFILE: #9
 -One part process
 -Mirror repeat of process

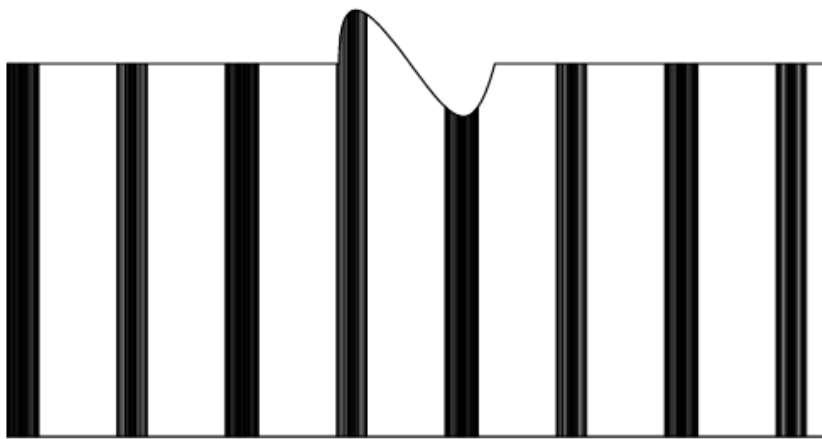
FIRE RATING:
 SOUND RATING:



3 SNAP 1 3D VIEW
 SCALE: NOT TO SCALE

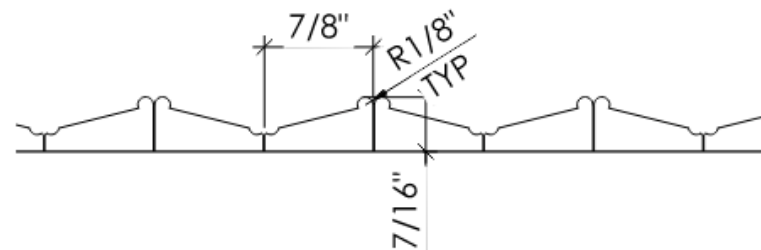


2 SNAP 1 AXON VIEW
 SCALE: NOT TO SCALE



1 DETAIL ELEVATION
 SCALE: 12" = 1'-0"

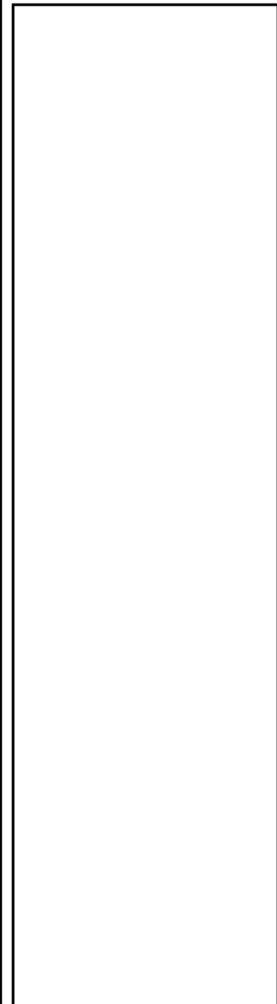
7/8"
 TYP



A DETAIL PLAN
 SCALE: 12" = 1'-0"

7/8"
 R1/8"
 TYP

7/16"



SHEET NAME:



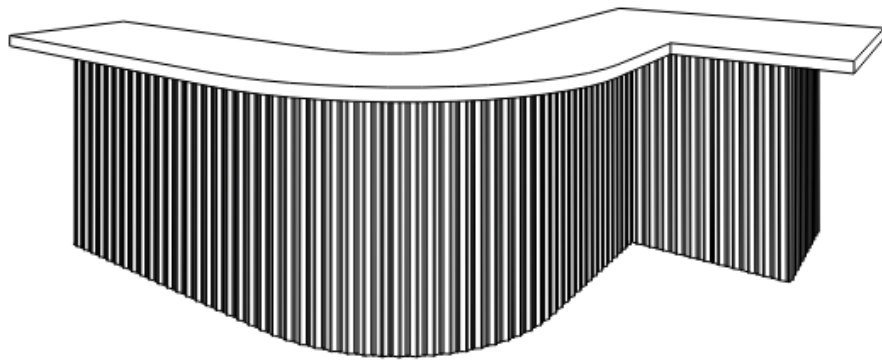
SNAP 2

PROFILE: #10
-One part process
-Mirror repeat of process

FIRE RATING:
SOUND RATING:

Blank area for specifications or notes.

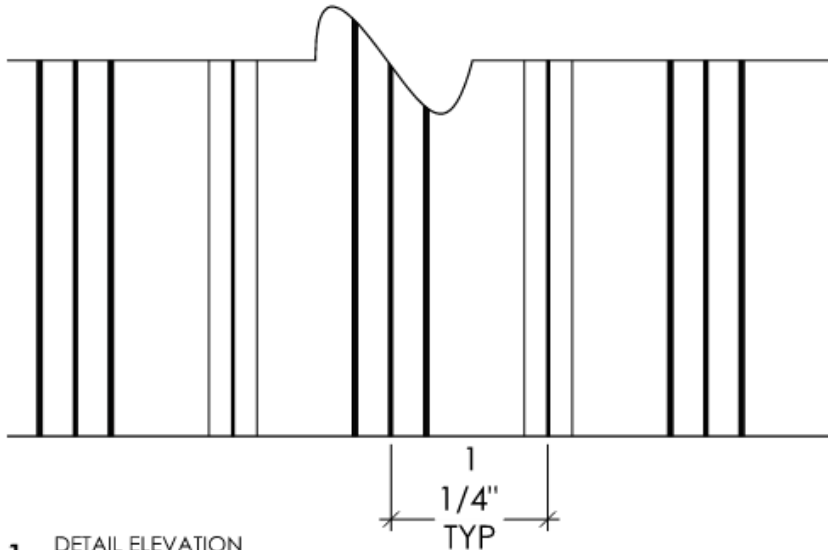
SHEET NAME:



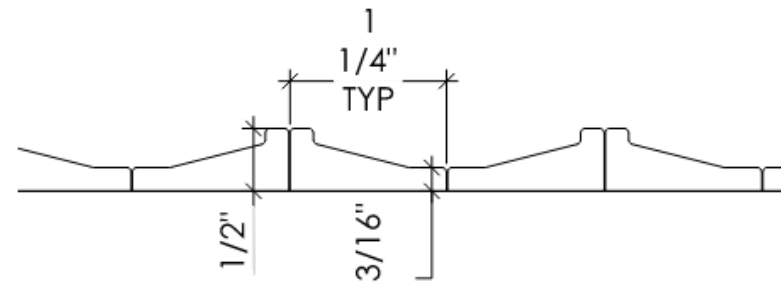
3 SNAP 2 3D VIEW
SCALE: NOT TO SCALE



2 SNAP 2 AXON VIEW
SCALE: NOT TO SCALE



1 DETAIL ELEVATION
SCALE: 12' = 1'-0"



A DETAIL PLAN
SCALE: 12' = 1'-0"

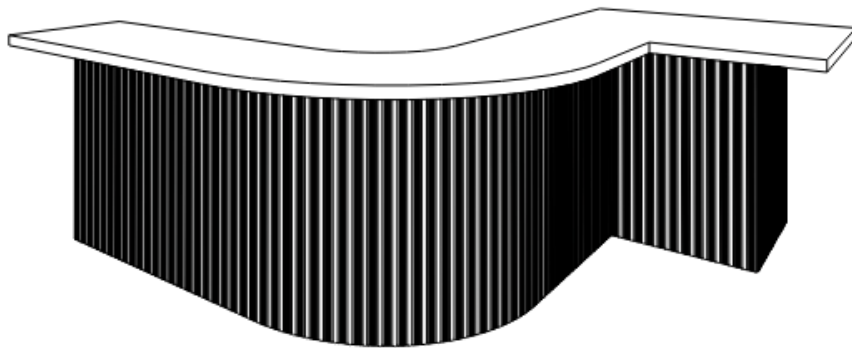
Preppy Stripes - This tambour offers a fresh, tailored aesthetic with its alternating widths and clean, rhythmic pattern. This design embodies a crisp and polished style, bringing an element of refined structure to walls, ceilings, or furniture. Ideal for creating both bold statements and subtle textures, Preppy Stripes adapts seamlessly to modern, classic, or eclectic spaces.



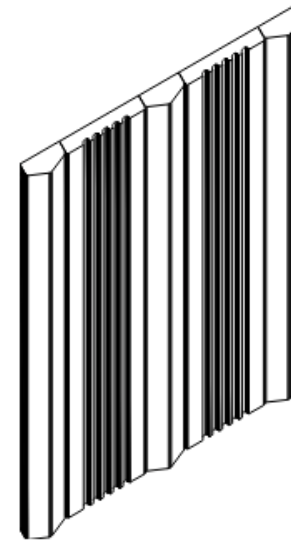
PREPPY STRIPES

PROFILE: #11
 -Two part process
 -Alternate repeat of profiles

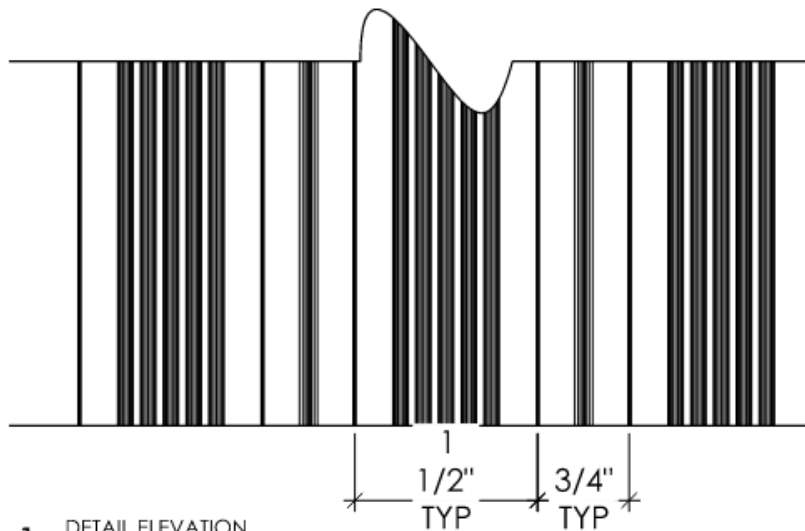
FIRE RATING:
 SOUND RATING:



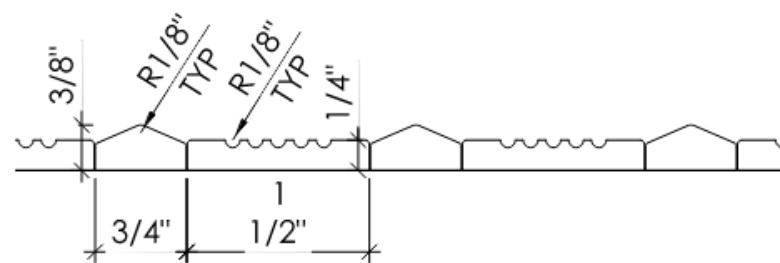
3 PREPPY STRIPES 1 3D VIEW
 SCALE: NOT TO SCALE



2 PREPPY STRIPES 1 AXON VIEW
 SCALE: NOT TO SCALE

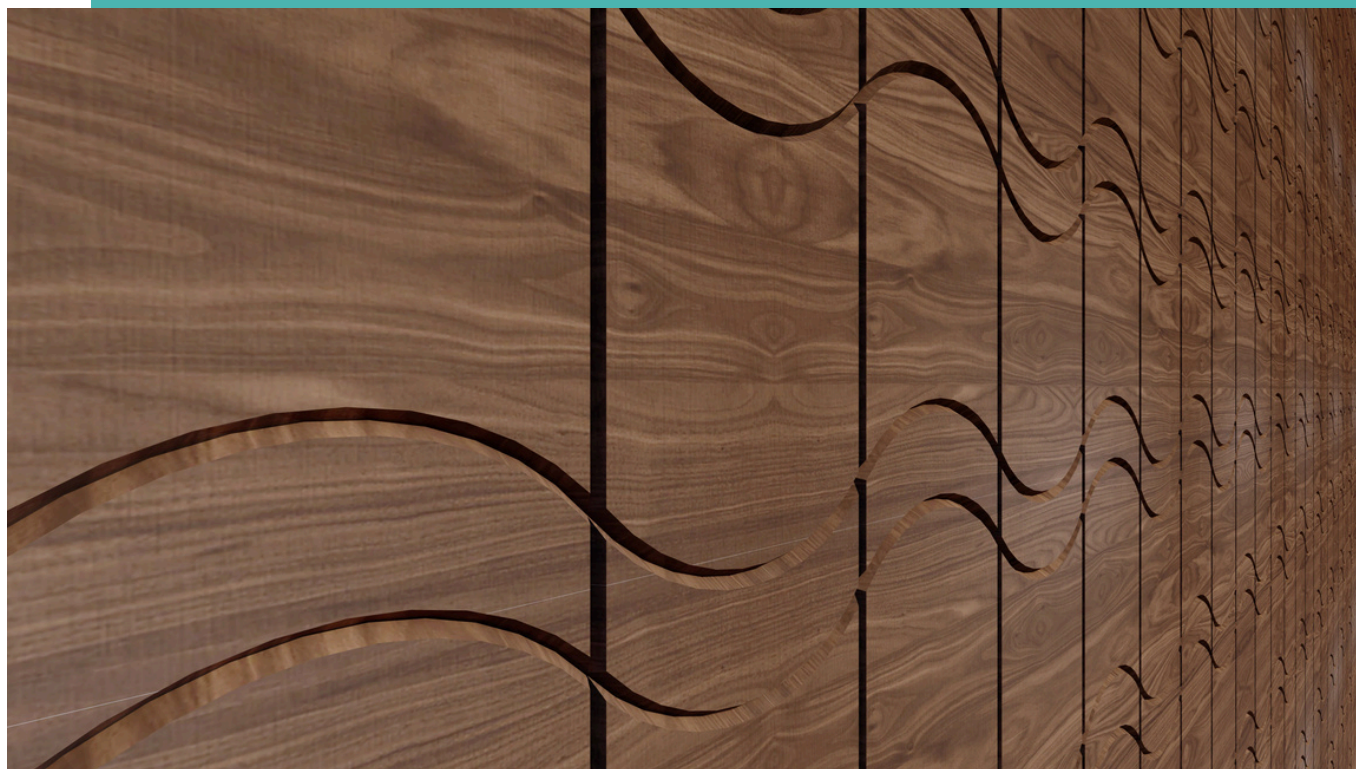


1 DETAIL ELEVATION
 SCALE: 12" = 1'-0"



A DETAIL PLAN
 SCALE: 12" = 1'-0"

SHEET NAME:



Oyster/Shield in Walnut

MADE FOR CREATORS,
BY CREATORS - A
CELEBRATION OF
TEXTURE, ARTISTRY, AND
INNOVATION.



Scale in White Oak



GET IN TOUCH

Aaron@lucille.studio

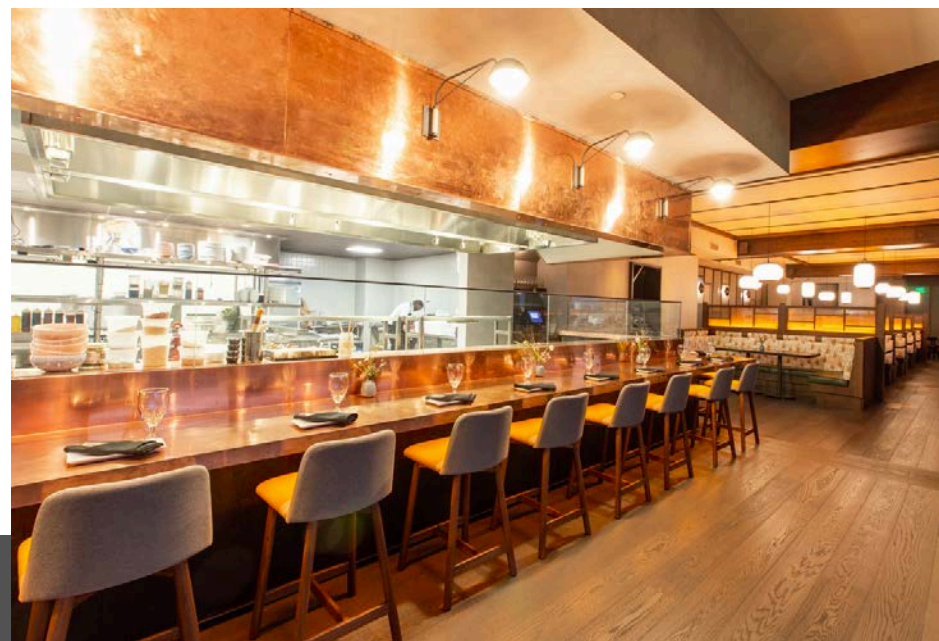
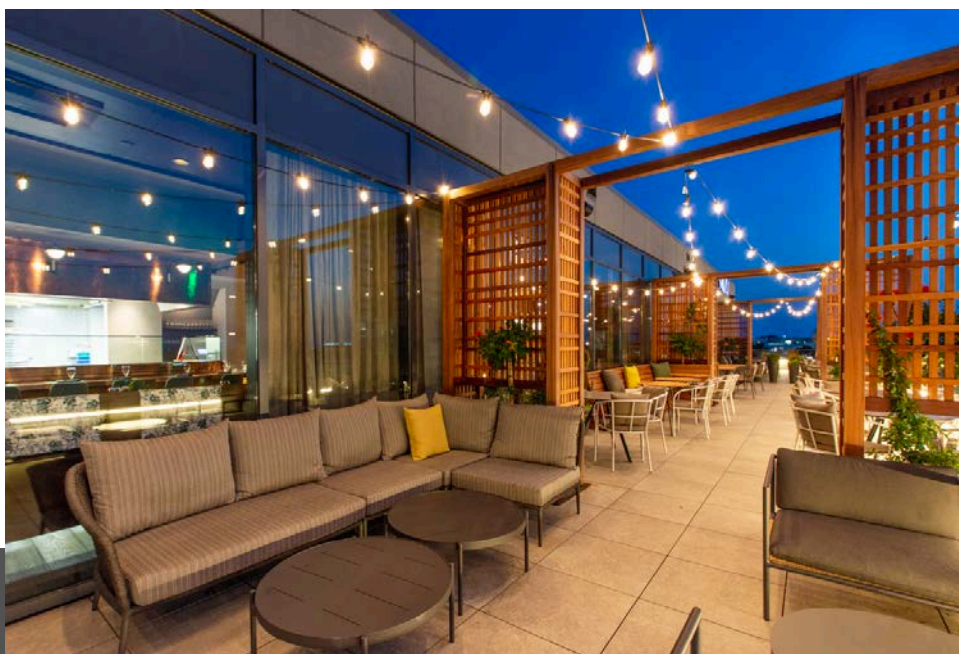
423-218-9658

2305 Dodson Ave. Suite C

Chattanooga, TN 37406



Website: www.lucille.studio



CUSTOM MILLWORK FOR HOSPITALITY, COMMERCIAL, AND RESIDENTIAL SPACES



Aaron Cabeen has a full service millwork company to help with all your needs.



Check out our website to see the exceptional custom millwork Cabeen Originals has done.

