

Our Mission

The Gaynor Family Regional Library is a destination like no other. Space to relax and read, enjoy a conversation or take in a class. All the while knowing that every effort has been made to reduce the buildings impact on your environment.

The Library is designed and constructed to meet the requirements of Manitoba's Green Building Policy. The building and process has been independently verified and recognized as Power Smart and designated with a three Green Globe rating.

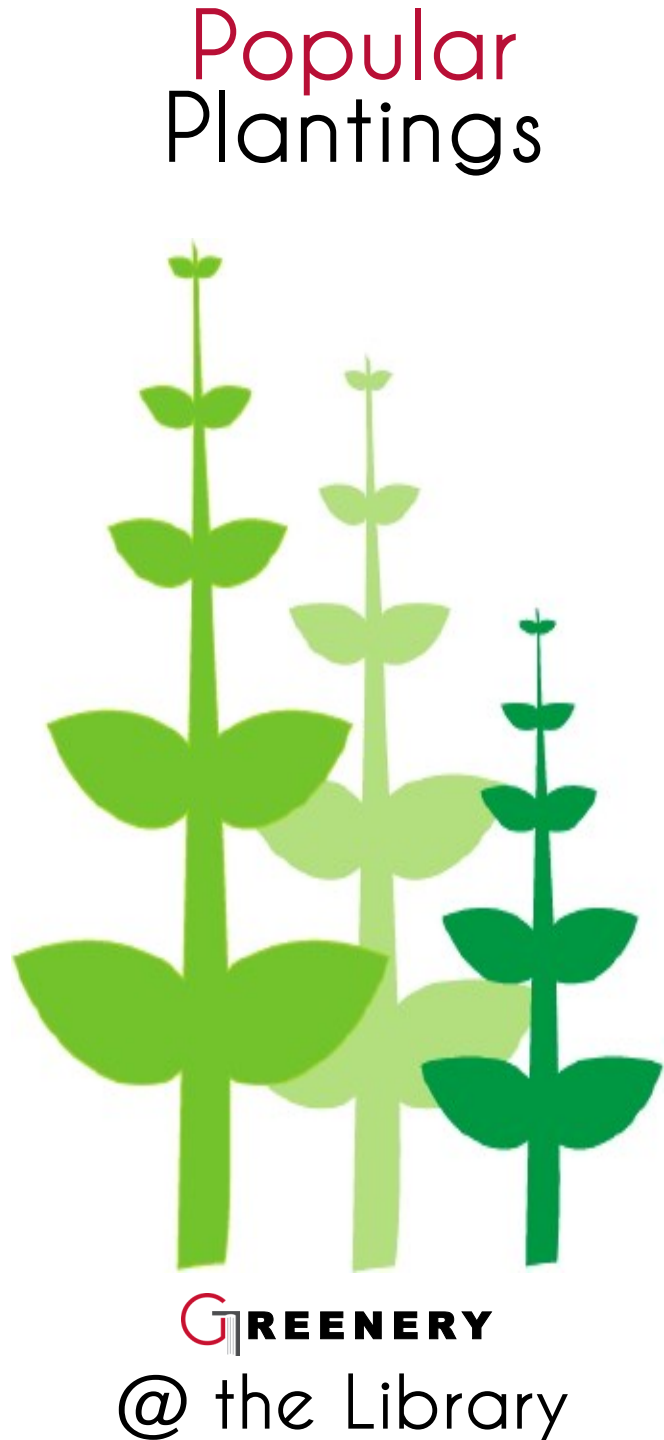
These ratings are based on the design of new and renovated buildings. How the building is constructed and how it performs from an environmental, energy and CO² reduction status.

Our facility is 38.7% more efficient than the Model National Energy Code for Buildings (MNECB).



806 Manitoba Avenue
Selkirk MB R1A 2H4

Phone: 204-482-3522
Fax: 204-482-6166
E-mail: library@gfrl.org
website: www.gfrl.org



Site/Urban Prairie

The Library encourages non personal vehicle use, through public (bus) transportation with a pick up and drop off location, bike racks and pedestrian only walkways.

The high efficiency parking lot lighting is controlled by the WattStopper system, which functions only as required.

A parking lot avoids heat islands with considerable green space.

All rain water and parking lot drainage is handled on property using the natural prairie as a filter. A partnership with Lake Friendly Manitoba and the East Interlake Conservation District has been created an Urban Prairie oasis.

Local farmers helped provide the composted biomass for the soil used in the Urban Prairie.

The structure was strategically oriented to capture the regional prairie vista. In the landscape, a system of bio-swales were introduced to direct water to the existing natural drainage.

The total size of the project is just under five acres, three acres of which are dedicated to the Urban Prairie reserve. Over 50 different local and natural grasses and flowers were used to return the property to its original historical state.



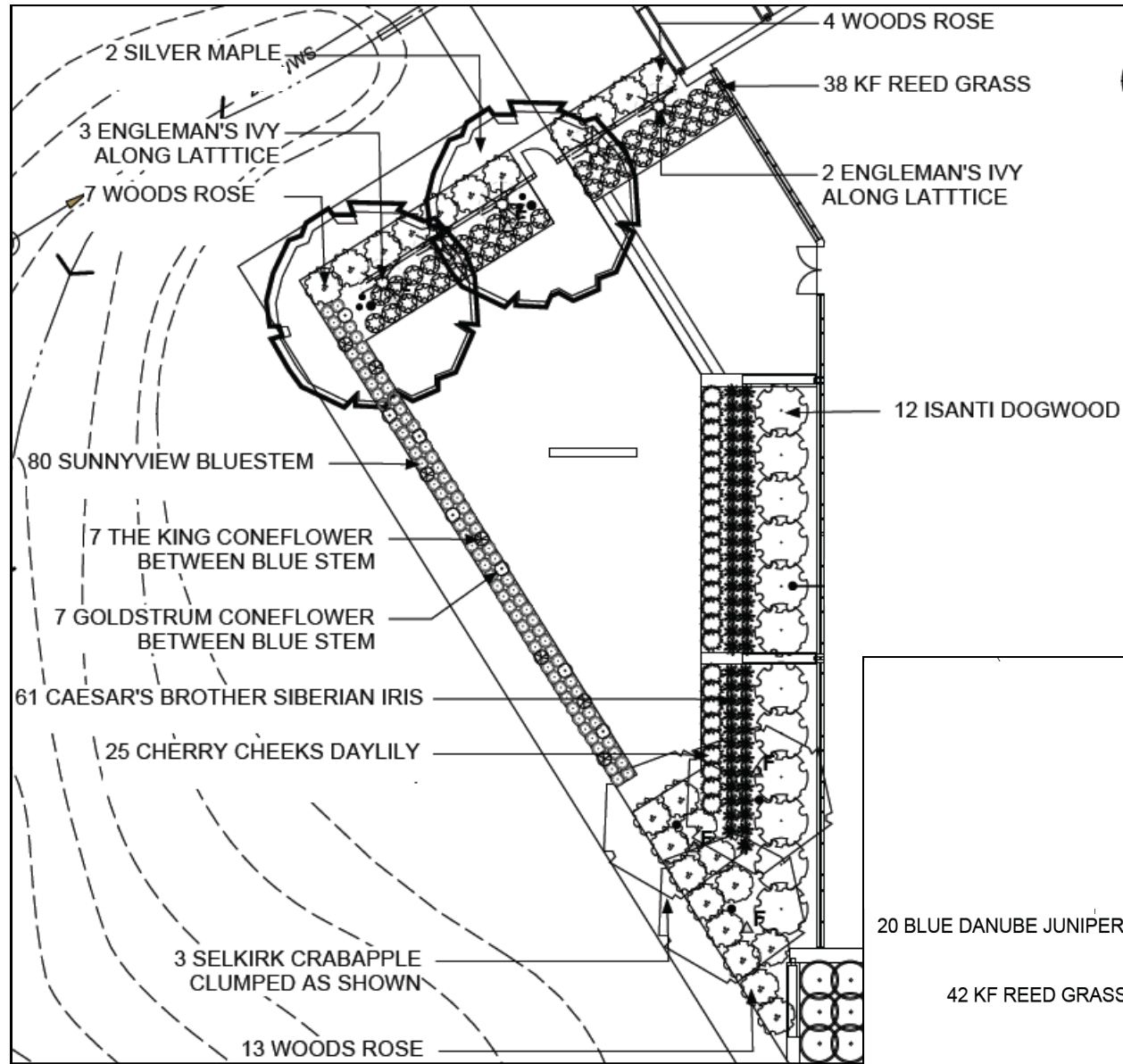
Photo: LM Architectural Group & Environmental Space Planning

Welcome to your Library



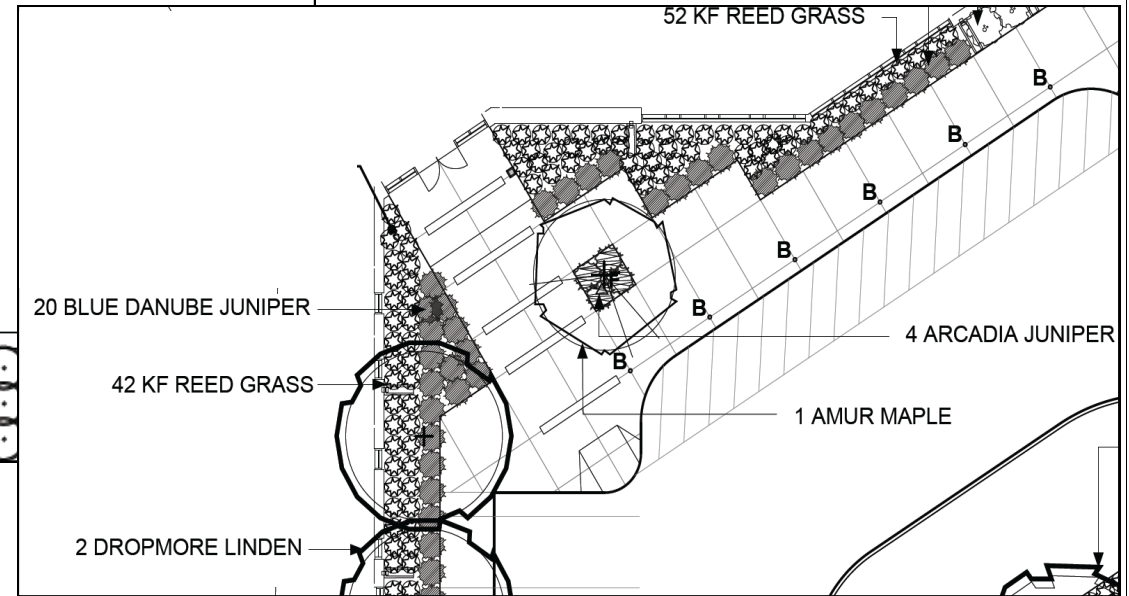
PLANT SPECIFICATION LIST

QTY	BOTANICAL/ COMMON NAME
Coniferous Trees	
5	<i>Picea pungens</i> / Colorado Spruce
10	<i>Thuja occidentalis 'Pyramidalis'</i> / Pyramidal White Cedar
Deciduous Trees	
3	<i>Acer ginnala</i> / Amur Maple
6	<i>Acer saccharinum</i> / Silver Maple
3	<i>Mauls 'Selkirk'</i> / Selkirk Crabapple
2	<i>Populus deltoides</i> / Cottonwood
20	<i>Tilia x flavescens 'Dropmore'</i> / Dropmore Linden
14	<i>Ulmus davidiana var. Japonica 'Discovery'</i> / Discovery Elm
Coniferous Shrubs	
68	<i>Juniperus sabina 'Arcadia'</i> / Arcadia Juniper
61	<i>Juniperus sabina 'Blue Danube'</i> / Blue Danube Juniper
Deciduous Shrubs	
18	<i>Cornus sericea 'Isanti'</i> / Isanti Dogwood
34	<i>Ribes alpinum</i> / Alpine Currant
50	<i>Rosa woodsii</i> / Woods Rose



Library Back/Patio

Perennials, Vines & Grasses		
251	<i>Calamagrotis x acutiflora 'Karl Foerster'</i> / Karl Foerester Reed Grass	
80	<i>Andropogon girardii 'Sunnyview'</i> / Sunnyview Bluestem	
7	<i>Echinacea purpurea 'The King'</i> / The King Coneflower	
7	<i>Rudbeckia fulgida 'Goldstrum'</i> / Goldstrum Coneflower	
40	<i>Hemerocallis 'Cherry Cheeks'</i> / Cherry Cheeks Daylily	
79	<i>Iris sibirica 'Caesar's Brother'</i> / Caesar's Brother Siberian Iris	
5	<i>Parthenocissus quinquefolia 'englemannii'</i> / Englemann's Ivy	



Library Front