



Lead Exposure

and Prevention

Table of Contents

Be sure to click to
get to the next
page!

01 Introduction to Chemistry

02 About Lead

03 Ways to be Exposed to Lead

04 What happens when lead enters my
body?

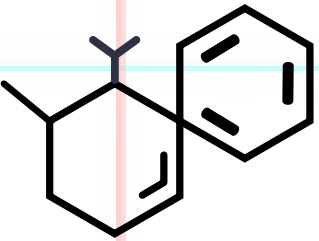
05 Potential Health Problems

06 Reducing Future Exposures

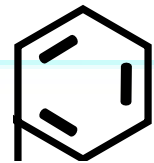
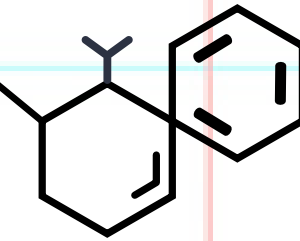
07 Resources

CLICK 

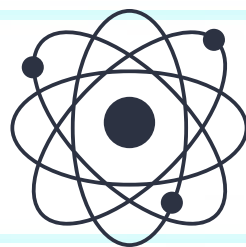
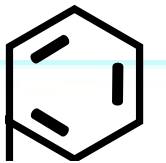
Introduction to Chemistry



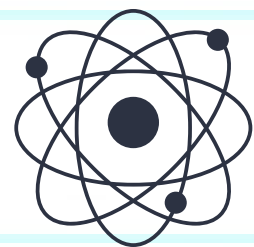
Chemical compounds and chemical mixtures are combinations of different types of elements.



Chemicals that are made up of one type of atom are *elements*.



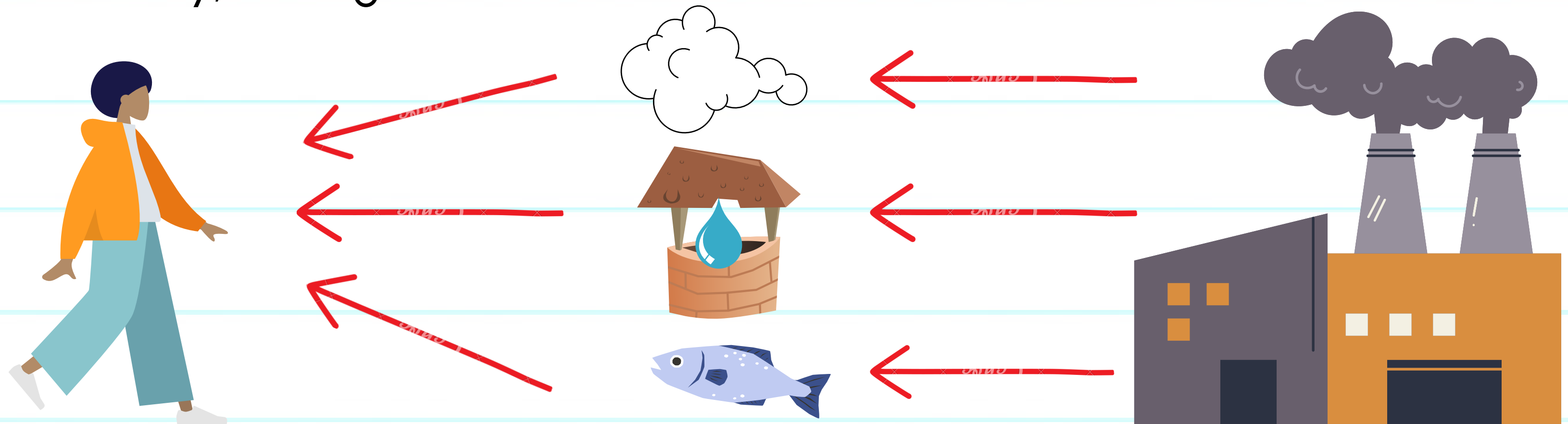
Atoms are the building blocks for all things in the universe because they make up everything.



Introduction to Chemistry

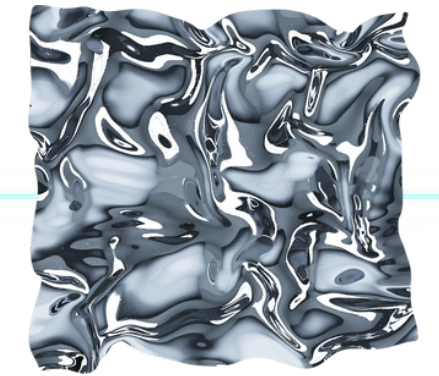
Human Exposure

When a person comes in contact with a chemical this is called exposure. Chemicals can get into the body through eating, drinking, breathing, and occasionally, through skin contact.



About Lead

Lead is an elemental metal that is found naturally in the Earth.



It can be found in the air, water, and soil.



Because lead is an element, it does not break down in the environment.

About Lead

Lead has historically been used to make:

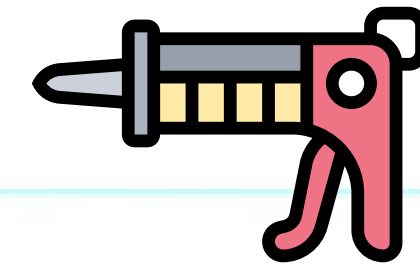
Batteries



Paint**



Caulking



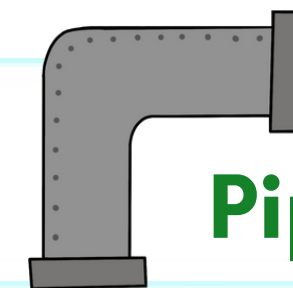
Ceramic Products**



Additive in Gasoline**



Ammunition



Pipes**

*****Due to health concerns, lead is no longer used in production of these products.***

Source: ATSDR

Ways to be Exposed to Lead

Drinking
Contaminated Water



Homes with Lead-
based Paint



Eating
Contaminated Food



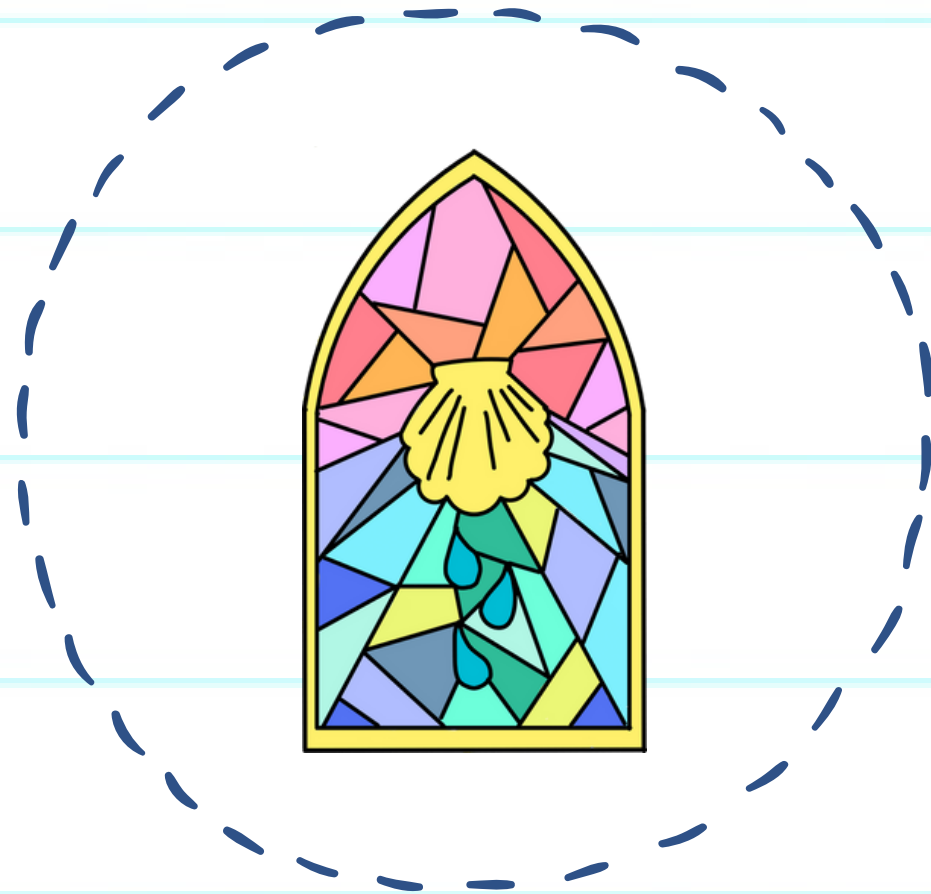
Contaminated
Soil



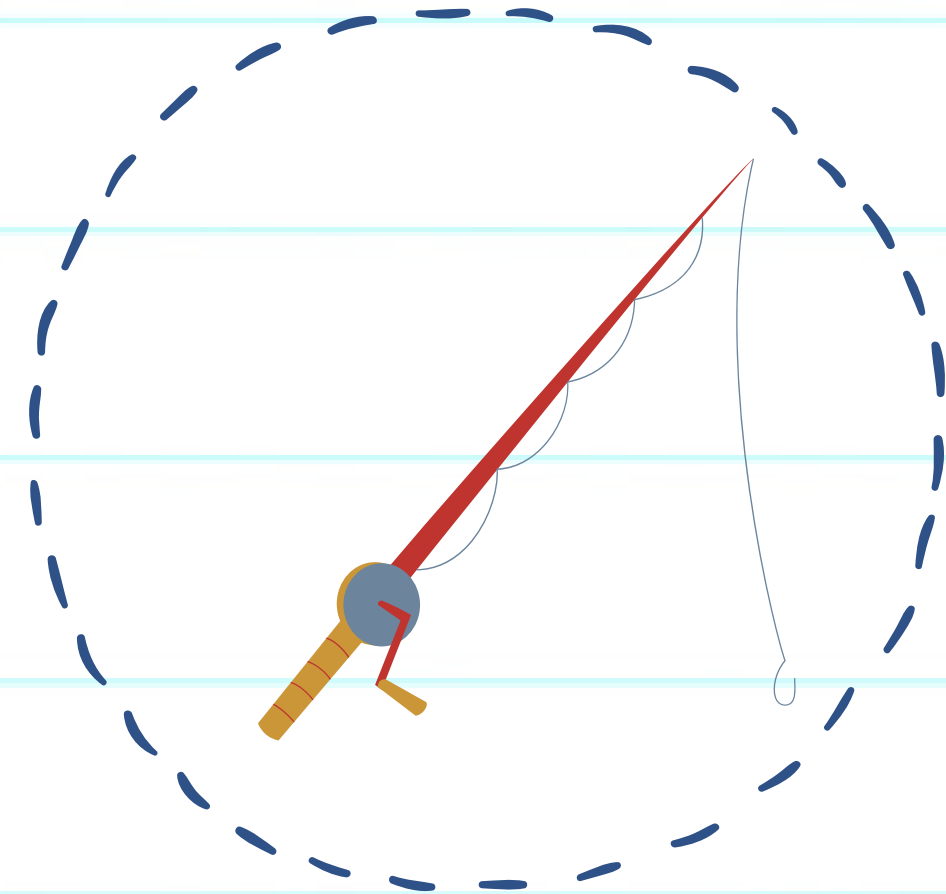
Ways to be Exposed to Lead

Hobbies where Lead is Involved

Making Stained Glass



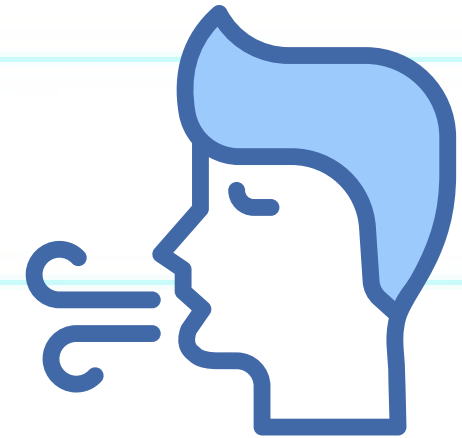
Fishing Weights



What happens when lead enters my body?

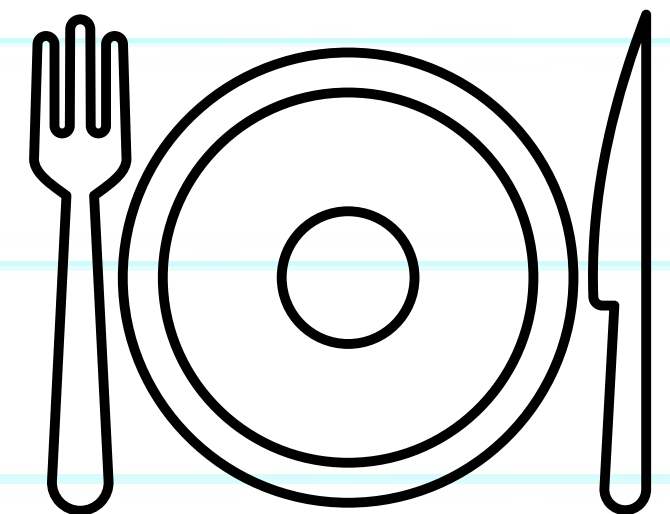
Breathing

- 60-80% of the lead that is inhaled will be absorbed into the bloodstream.



Eating

- 40-50% of the lead that is ingested is absorbed into the bloodstream of children and 3-10% in adults.



Lead primarily leaves the body through urine and feces.

Potential Health Problems

Just because you have been exposed to lead does not mean that you will feel sick or have any health problems.

Lead can cause health problems in almost every organ and system in the body.

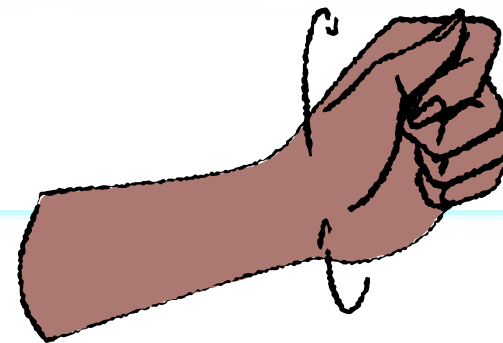
**Decreased learning,
memory, and attention.**



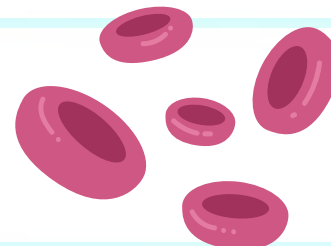
**Increased Blood
Pressure**



**Weakness in fingers,
wrists, or ankles.**

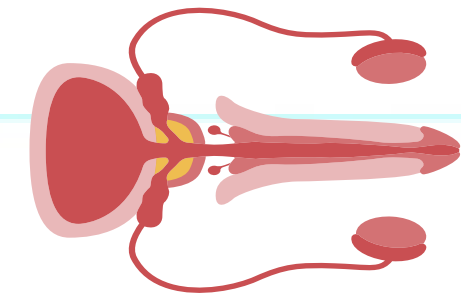


**Anemia (low iron in
the blood)**

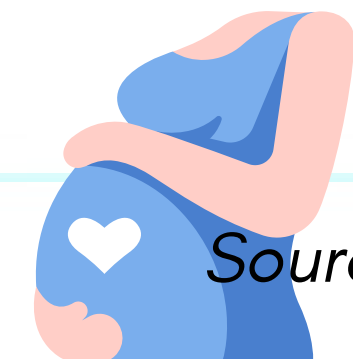


Kidney Damage

**Damage to
Reproductive
Organs in Men**



**Miscarriage in
pregnant women.**



Source: ATSDR

Potential Health Problems

Just because you have been exposed to lead does not mean that you will feel sick or have any health problems.

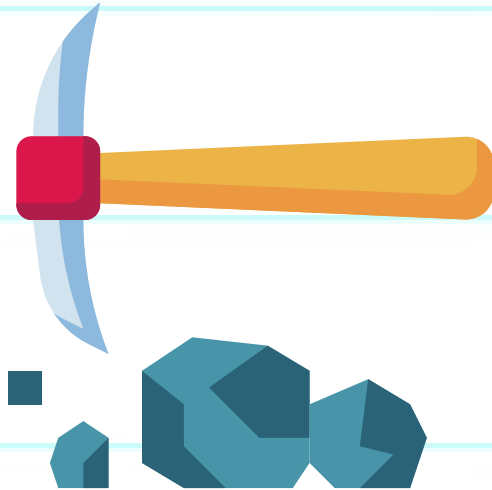
Lead has been classified by the Department of Health and Human Services and the Environmental Protection Agency as probable to cause cancer in humans.



Source: ATSDR

You are at a higher risk of coming in contact with lead if you work in the following industries:

Lead smelting, mining, and refining



Battery manufacturing



Steel welding or cutting operations



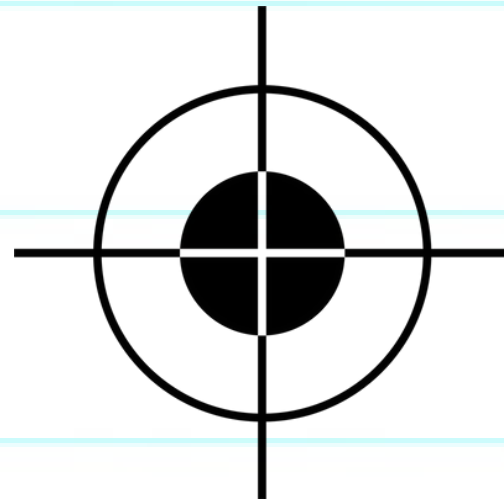
Construction



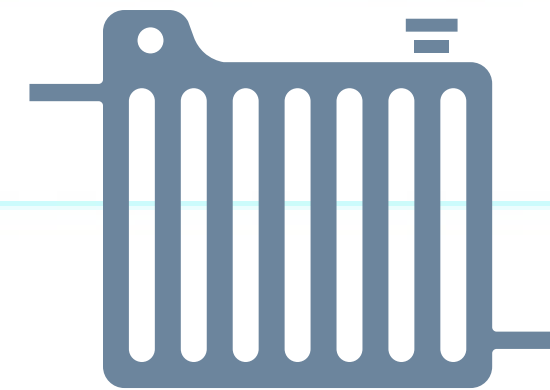
Source: ATSDR

You are at a higher risk of coming in contact with lead if you work in the following industries:

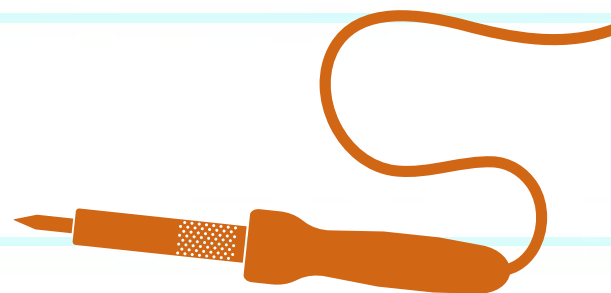
Firing ranges



Radiator repair shops



Industries requiring flame soldering of lead



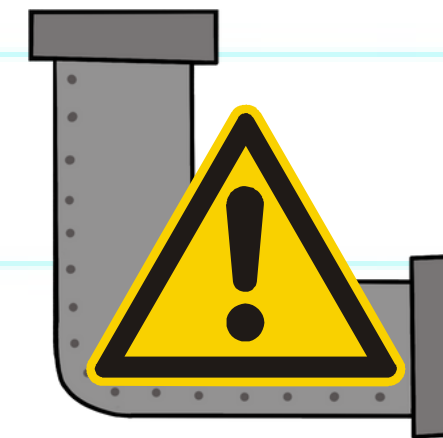
Source: ATSDR

Reducing Future Exposures

Check for lead in consumer products.



Avoid drinking water that traveled through pipes with lead solder.



Check the construction date of your home and homes you spend a lot of time in. Homes built before 1978 may contain lead-based paint. Clean and dust regularly with a damp cloth.



Source: ATSDR

Resources

The resources listed below work on issues related to health and/or environmental pollution in Glynn County.

Emory University

Phone: 404-727-0250

Email: BrunswickExposure@emory.edu

One Hundred Miles

Website: <https://onehundredmiles.org/>

Phone: (912) 264-4111

Email:

Glynn County Health Department

Phone: (912) 264-3961

Website: <https://bit.ly/3NkOIFv>

Environmental Justice Advisory Board

Website: environmentaljusticeadvisoryboard.org

Phone: (912) 398-9923

Email: ejab.brunswick@gmail.com

Coastal Community Health

Website: <https://coastalchs.org/>

Phone: 912-275-8028

Email:

EcoAction

Phone: 470-963-0389

Email: info@eco-act.org

Glynn Environmental Coalition

Website: <https://www.glynnenvironmental.org/>

Phone: (912) 466-0934

Email: GEC@glynnenvironmental.org

UGA Marine Extension and Sea Grant

Website: www.gacoast.uga.edu/

Phone: 912-264-7268

Email: klaustina@uga.edu

Rebuilding Together of Glynn County

Phone: 912-398-9923

Website: rebuildglynncounty.org

Coastal Equity and Resilience Hub

Website: cearhub.org

References

Agency for Toxic Substances and Disease Registry (ATSDR). 2020. Toxicological Profile for Lead. Atlanta, GA: U.S. Department of Health and Human Services, Public Health Service.