



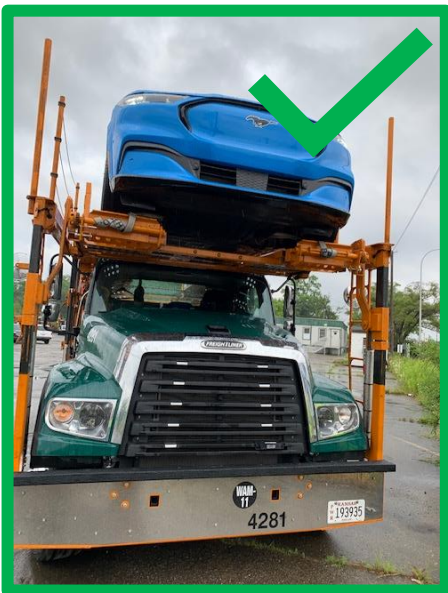
**QUALITY ASSURANCE BULLETIN #388
NORTH AMERICAN VEHICLE LOGISTICS**

27-January-2021

To: USA/Canadian Carhaul Carriers Transporting Ford Product

Subject: Mustang Mach-E Forward Only in Over the Cab Position (headrack)

The purpose of this bulletin is to make all carhaul carriers transporting the Ford Mustang Mach-E aware of a potential risk to rear glass blowout should a Mach-E be loaded in the “backed-on” orientation in the forward most position on the headrack directly over the cab of the truck. Should a Mach-E need to be loaded in this position, you must do so in the “drive-on” facing-forward orientation.



Note: Continue to reference the “Ford Motor Co Carrier Guide to Mach-E” that has been updated with this direction and was included in the email that published this bulletin.

Please contact me should you have any questions.

Kind Regards,
Benjamin A. Pohl
NA Vehicle Delivery Quality – Damage Prevention
bpohl4@ford.com | c. (734) 635-1042