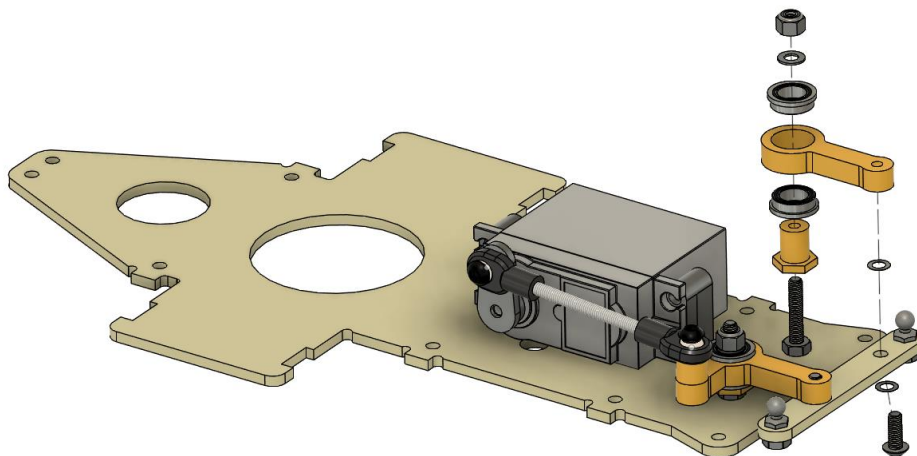


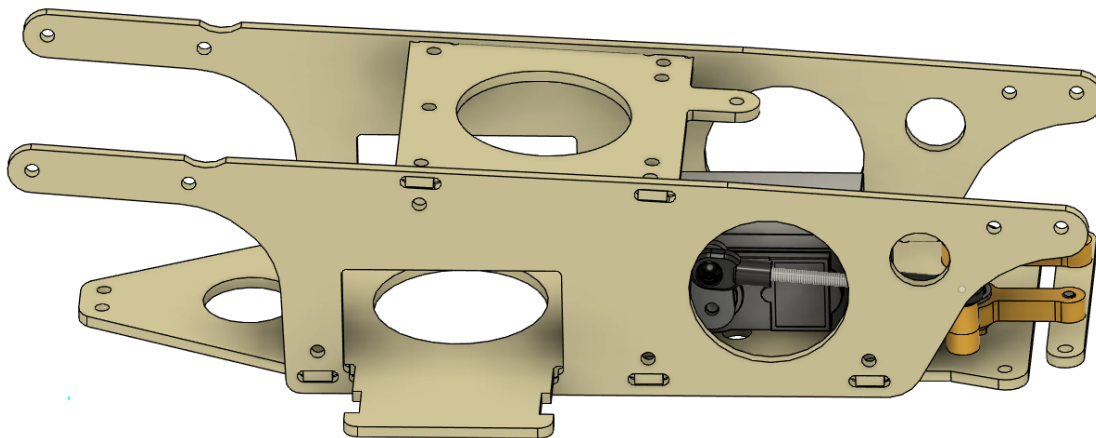
Factory Works Hotshot chassis set

Start by removing the chassis from your front and rear gearboxes. Remove the front bumper and roll cage. Remove the wheels and tires. Remove your electronics and set them aside. Disassemble your front steering rods from the ball joints. Remove the body post.

Preassemble the Chassis set by first installing the ball bearing steering kit. Install the 3x20mm flat head screws through the chassis, secure with a plain nut and nylon post. Install a bearing, the bellcrank, and another bearing. Follow with a flat washer and locknut. Make sure that the bellcranks operate smoothly. You may need to loosen each pivot slightly. Now, install the rack bar using the 3x8mm screws and a shim on each side noting the offset of the rack bar holes to match the offset of the chassis. Hand tight, then back off slightly until free. Transfer your ball joints, facing upward as shown. Install your servo. Build and install your new steering link. Make sure your servo is centered and the steering is functioning before proceeding. It is much easier to do now before the sides are installed.



Next, assemble the sides and top chassis as shown. Use zip ties to hold the plates together, three at the bottom and one at the top on each side. You do not need to crank these down. The chassis is allowed to twist for the best performance. If you wish to retain the driver head, install it in the center, rearmost hole in the upper plate. Transfer your front body post into the offset front tab.



Install the rear transmission assembly. Don't forget to install the short screws at the bottom of the trans, using the old battery door hinge. If you are installing the roll cage, you can attach that now. Use the thinner spacers at the very rear. If you are not using the roll cage, use the longer black spacers.

Install the front transmission while making sure that the prop shaft is in place and not binding. Assemble your ball joints with 40mm threaded rods and install them between the steering rack and the hub carriers. Try to get the tie rods as parallel as possible with the lower suspension arms, this will reduce bump steer. You can use spacers, washers, or nuts to adjust the height on the rack or the carrier side to achieve this. Install the remaining electronics and set the toe. Install the front bumper. You should now be ready to race!