



# DISCOVER CABINETRY







# A NEW KIND OF CABINET COMPANY

**Yes, we have that shaker white cabinet you may be looking for, however, we also offer 12 additional trendsetting styles. With an abundance of stock, we ship palletized product within 24 hours of execution of order.**

**Whether you are a cabinet dealer in Colorado or have the need for us to install your multifamily in Houston, TX...Discover Cabinetry is here to help!**

**Reach out to a Discover Cabinetry representative today or call 800.861.2535.**



**SHAKER WHITE**  
**(HSW)**



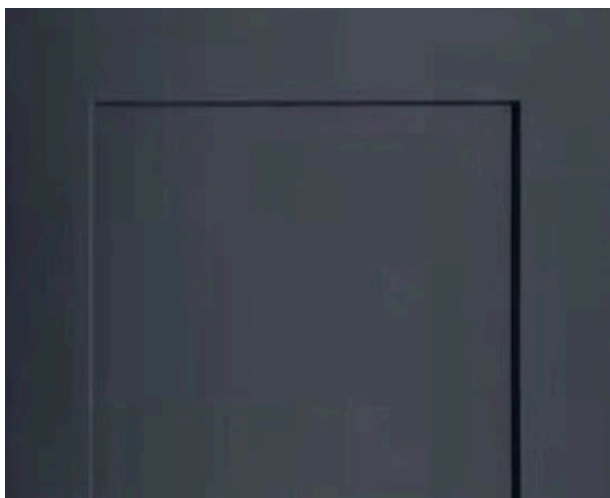
**SHAKER GRAY ASH**  
**(HSG)**



**SHAKER DARK GRAY**  
**(HDG)**



**SHAKER LIGHT GRAY**  
**(HLG)**



**SHAKER BLUE**  
**(HSB)**



**SHAKER BLACK**  
**(HBK)**

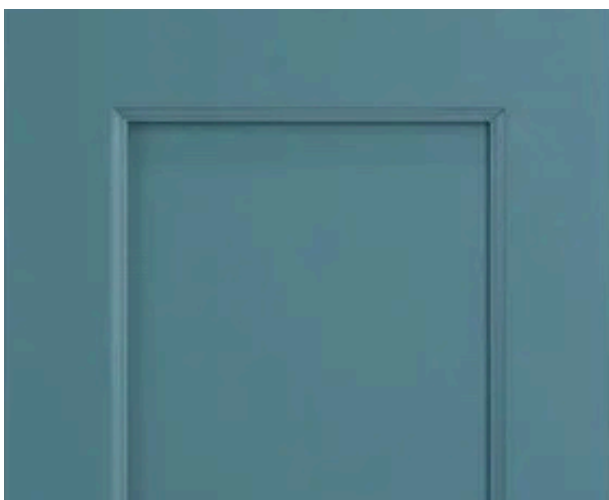




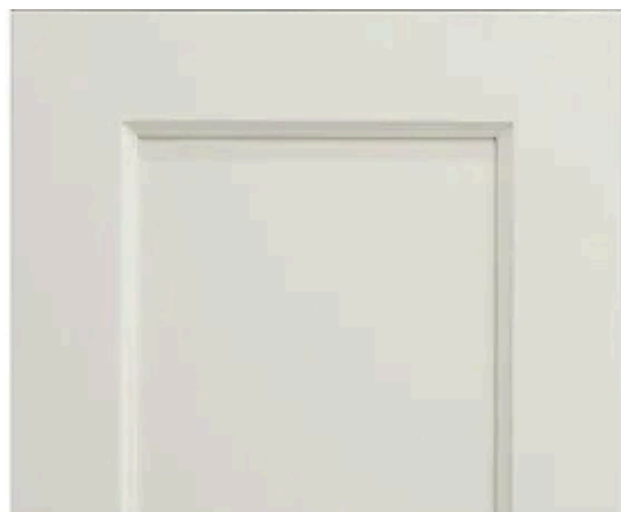
**SLIM MOCHA  
(SLM)**



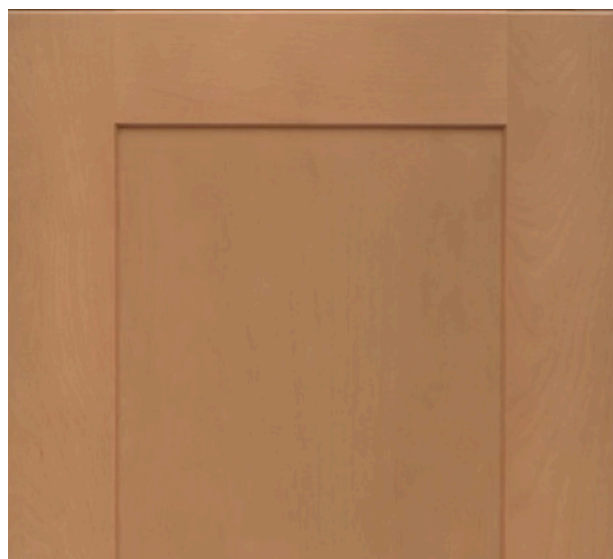
**SLIM WHITE  
(SLW)**



**TRENTON GREEN  
(HTG)**



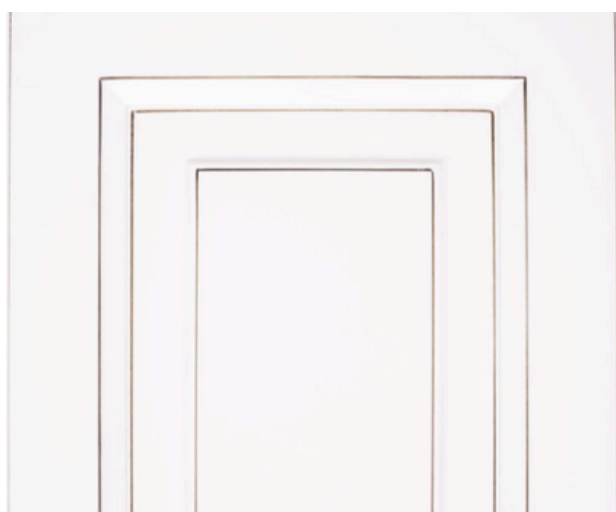
**TRENTON WHITE  
(HTW)**



**NATURAL MAPLE  
(HNM)**



**DALLAS CINNAMON  
(DC)**



**DALLAS IVORY  
(DI)**

# **PRICING**

**Please see your representative for latest price list or email:  
[sales@discovercabinetry.com](mailto:sales@discovercabinetry.com).**

## **Level 1 Pricing:**

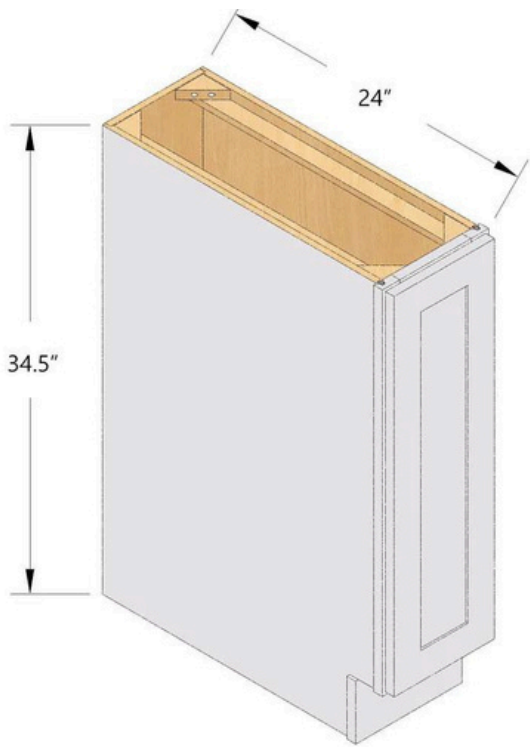
**Shaker White (HSW) Shaker Gray Ash (HSG)**

## **Level 2 Pricing:**

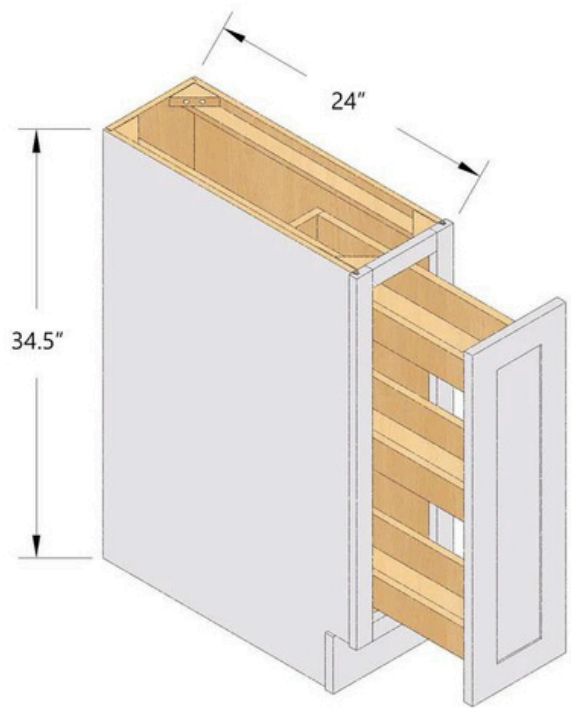
**Shaker Dark Gray (HDG) Shaker Light Gray (HLG) Shaker Blue (HSB)**

**Shaker Black (HBK) Slim Mocha (SLM) Slim White (SLW) Trenton Green (HTG)**

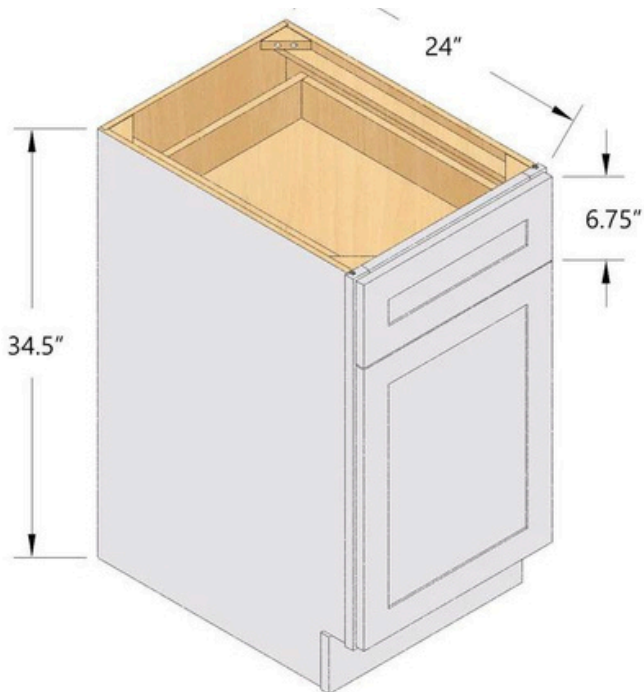
**Trenton White (HTW) Natural Maple (HNM) Dallas Cinnamon (DC) Dallas Ivory (DI)**



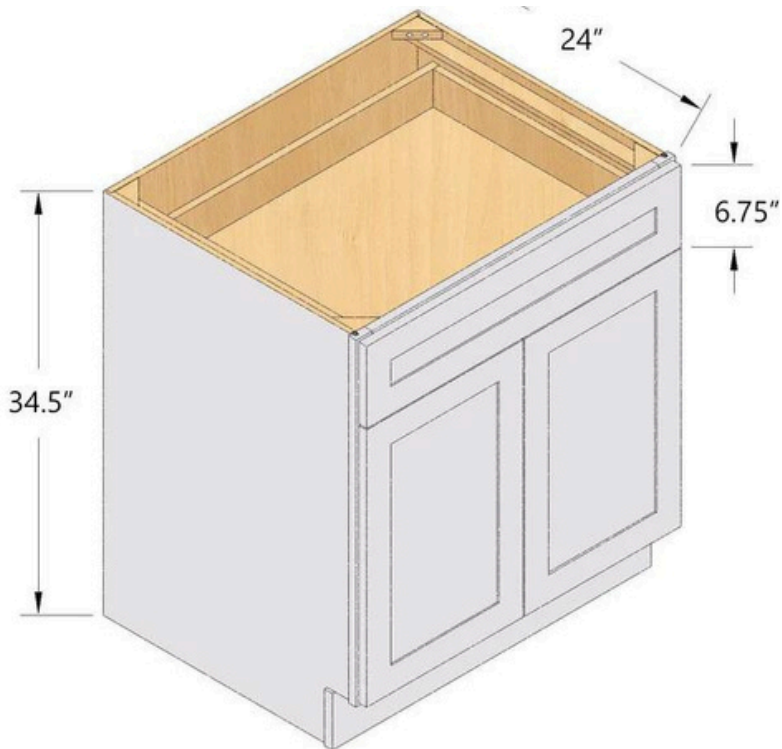
**B09 BASE  
FULL HEIGHT DOOR**



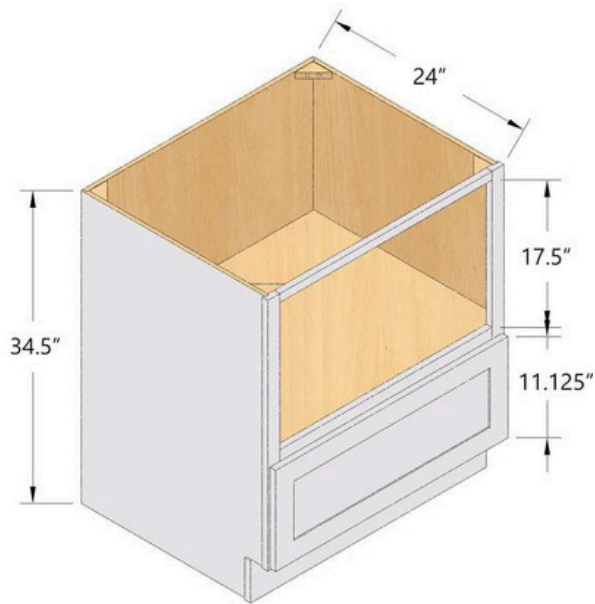
**B09SP BASE  
FULL HEIGHT DOOR**



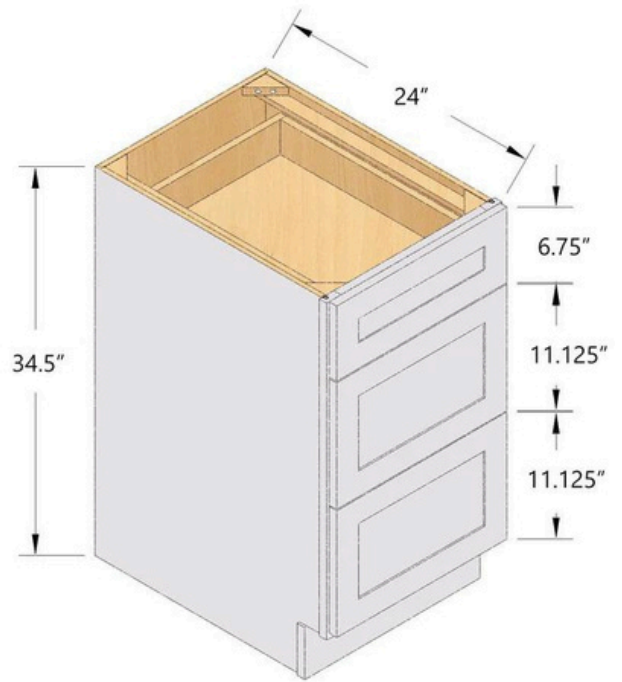
**BASE CABINET  
B12 - B21  
AVAILABLE IN 3" INCREMENTS**



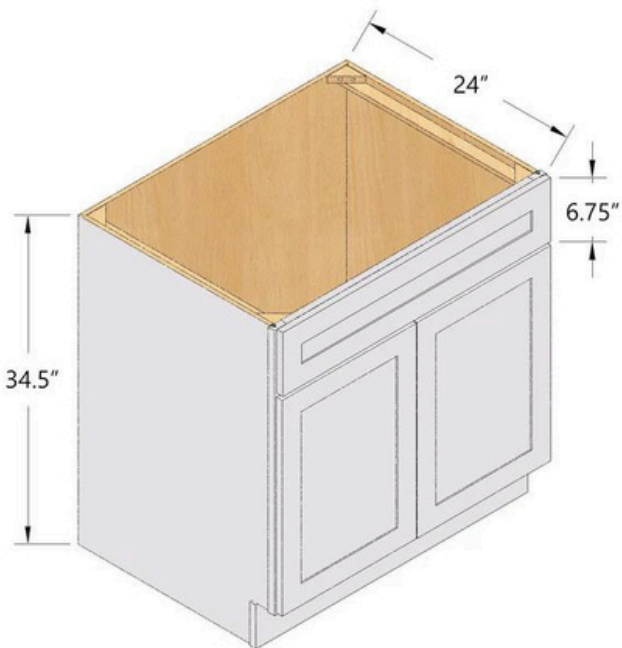
**BASE CABINET  
B24 - B42  
AVAILABLE IN 3" INCREMENTS**



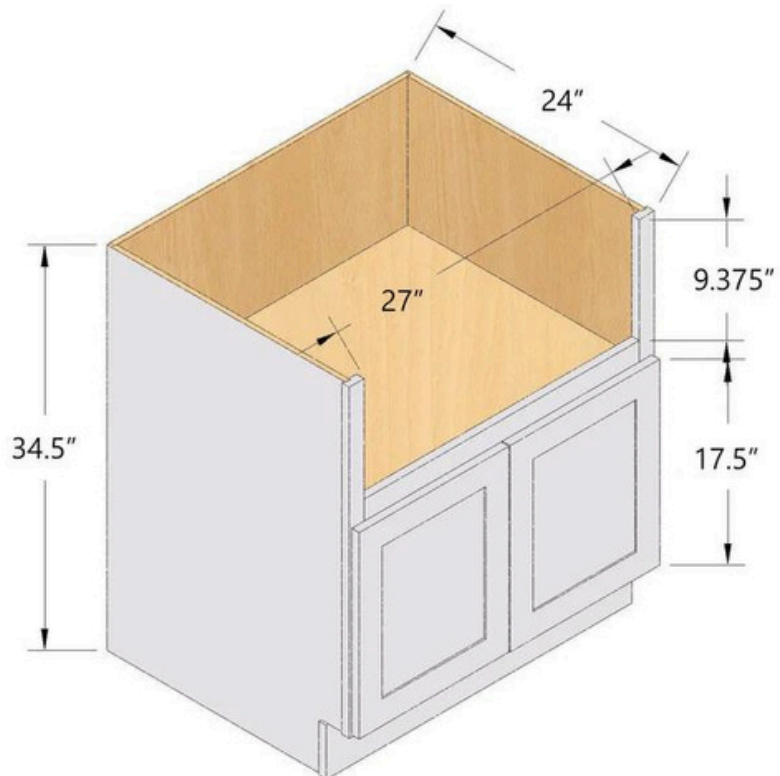
**BMD30 MICROWAVE BASE**  
**30" WIDE**



**THREE DRAWER BASE CABINET**  
**3DB12 -3DB36**  
**AVAILABLE IN 3" INCREMENTS**

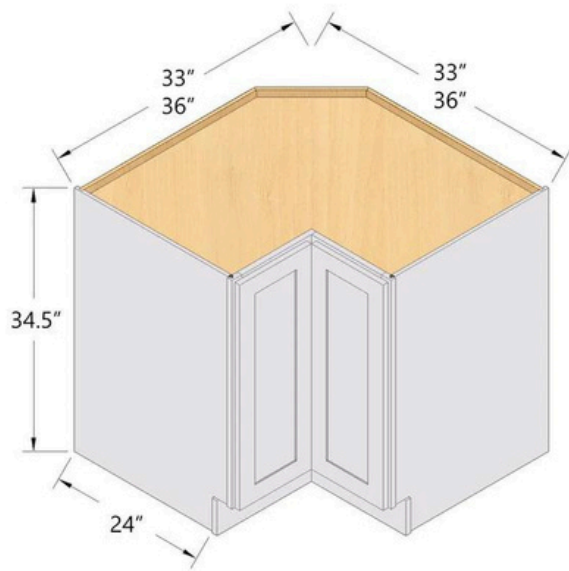


**SINK BASE CABINET**  
**SB24 - SB36**  
**AVAILABLE IN 3" INCREMENTS**

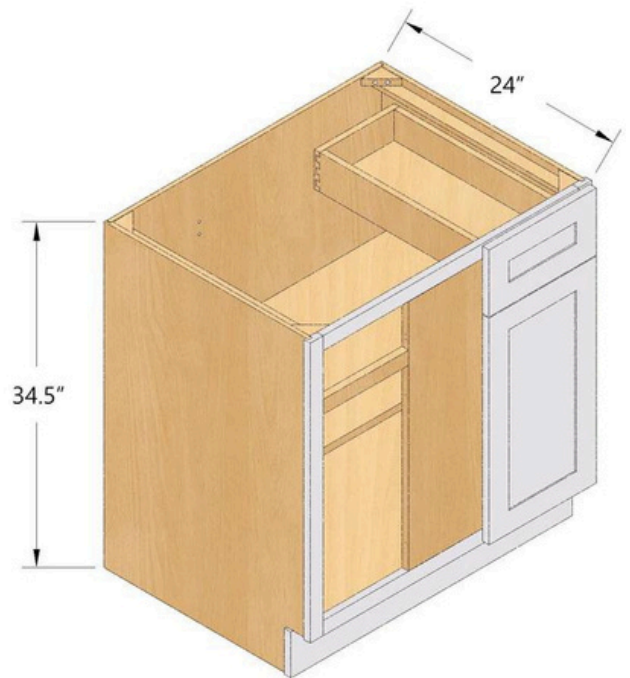


**FARM SINK BASE CABINET**  
**FSB36**

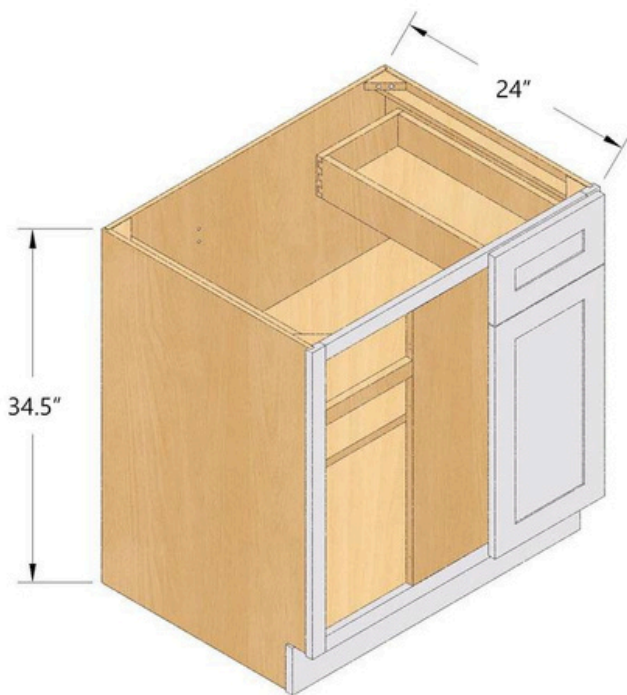




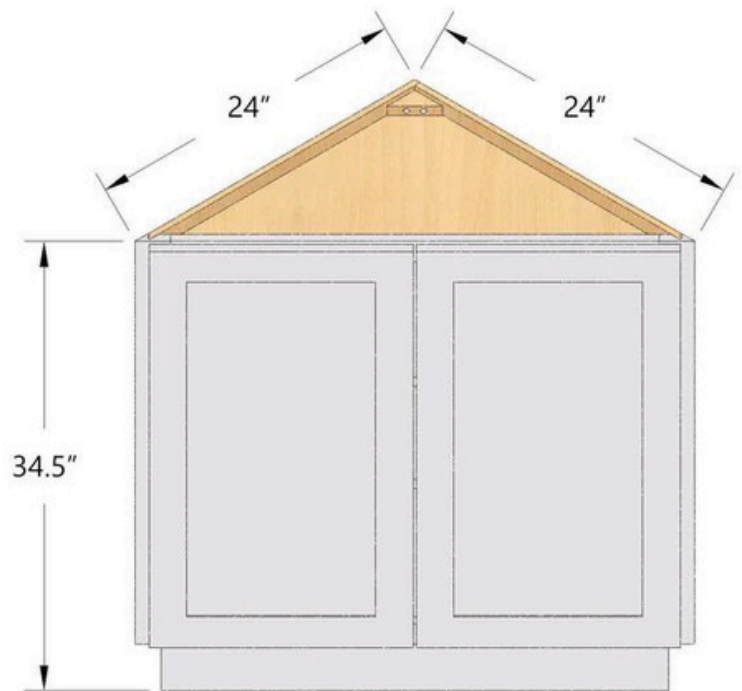
**LAZY SUSAN CORNER BASE**  
**LSB33 OR LSB36**



**BLIND CORNER BASE CABINET**  
**BLB39/42**  
**CABINET 39" WIDE. CAN BE**  
**PULLED 3"**

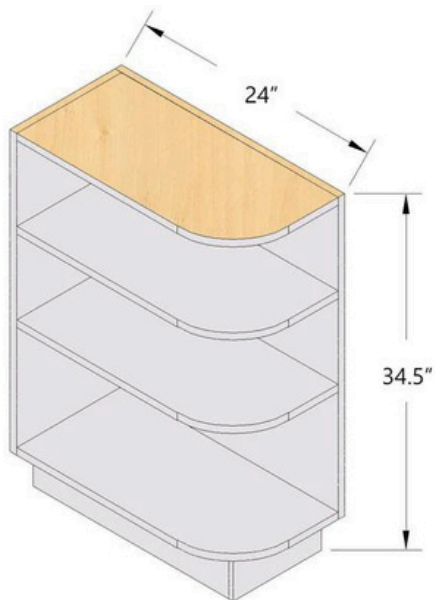


**BLIND CORNER BASE CABINET**  
**BLB42/45**  
**CABINET 42" WIDE. CAN BE**  
**PULLED 3"**

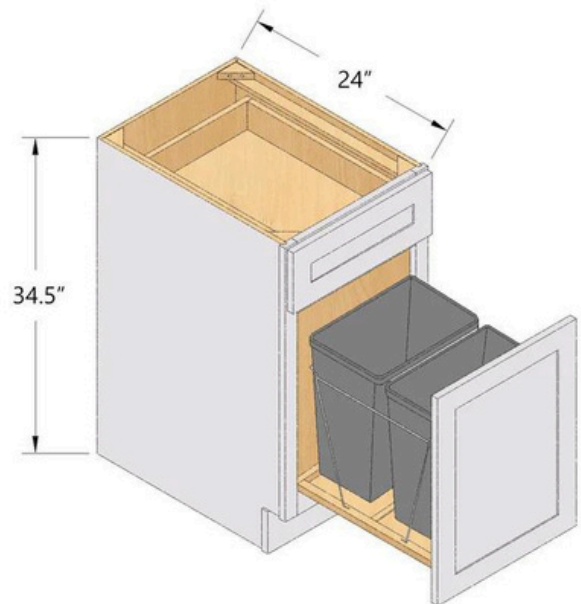


**BASE END CABINET**  
**BEC24**

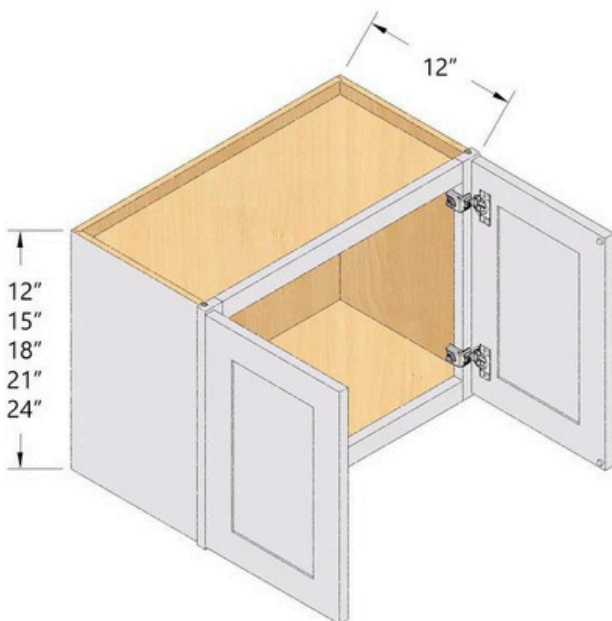




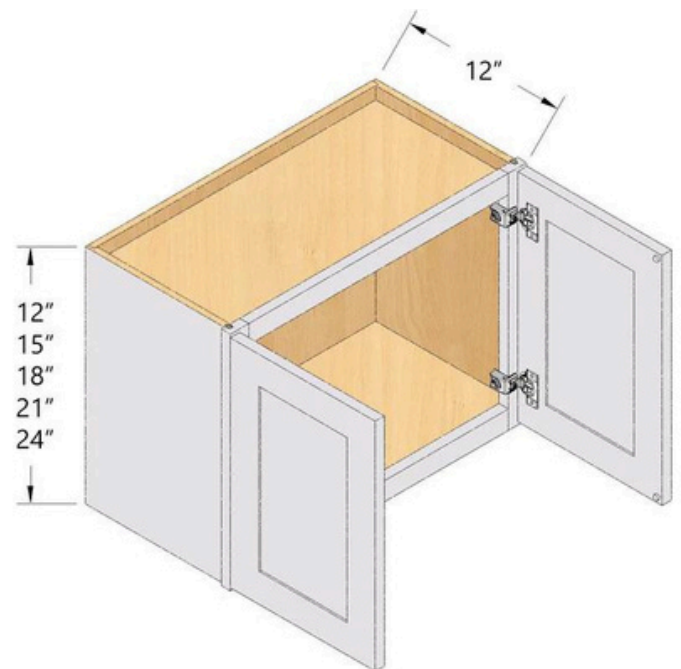
**BASE END SHELF CABINET  
BES12**



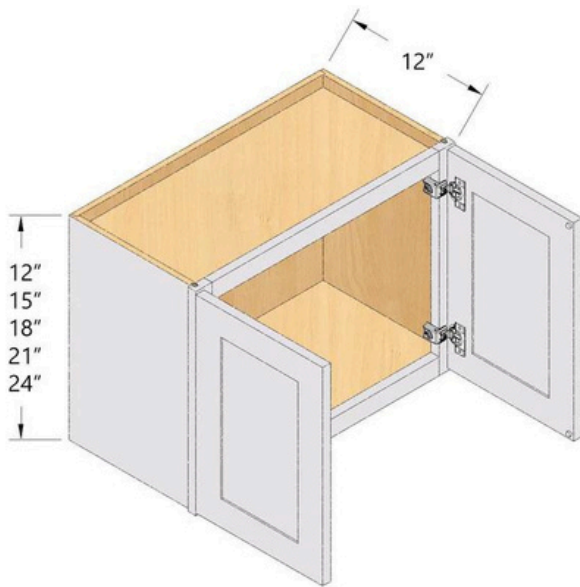
**BASE WASTEBASKET  
BWB18**



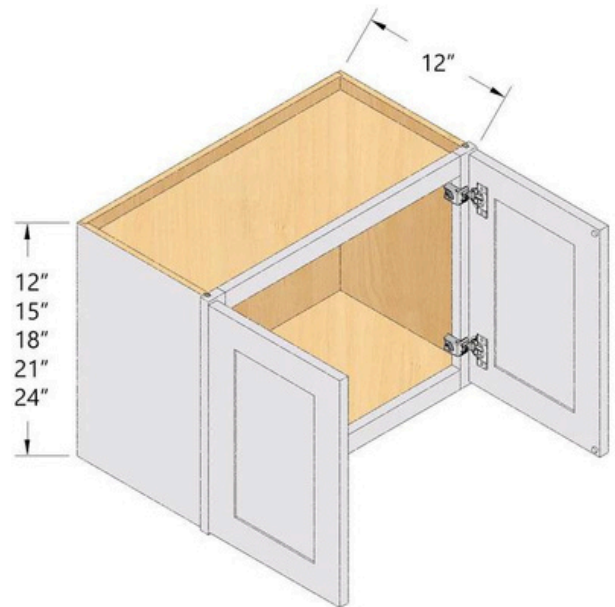
**WALL CABINET - 12" HIGH  
W3012, W3312, W3612 & W3912**



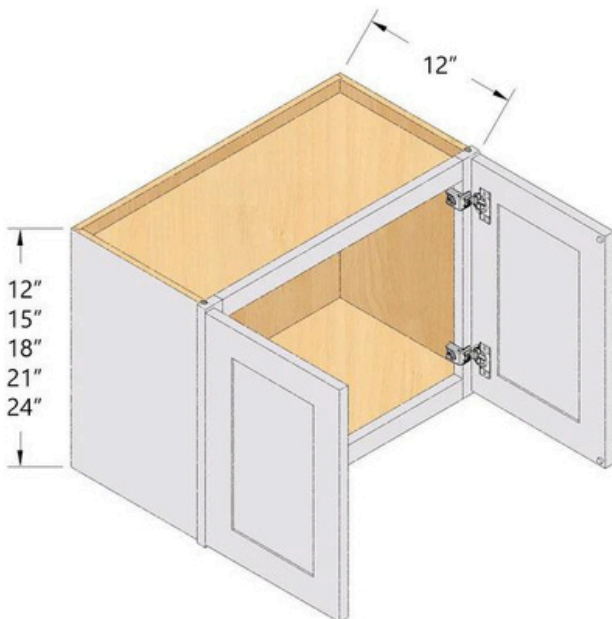
**WALL CABINET - 15" HIGH  
W1215, W1515, W1815 & W2115  
(ONE DOOR)  
W2415, W2715, W3015, W3315,  
W3615 & W3915 (TWO DOORS)**



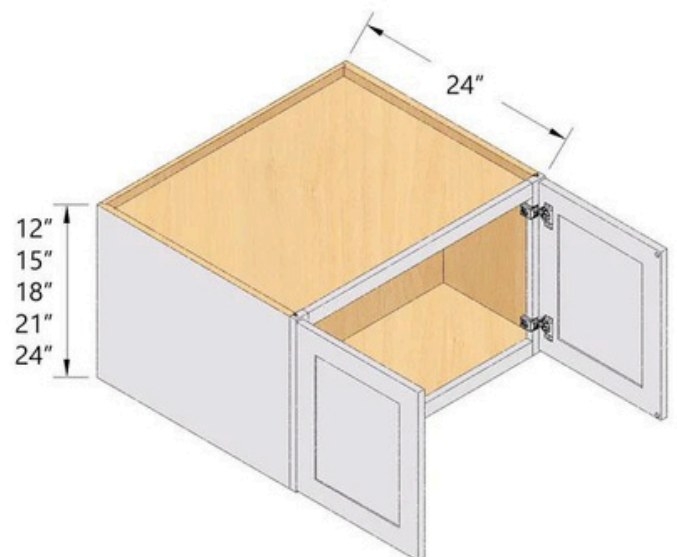
**WALL CABINET - 18" HIGH**  
**W2418, W3018, W3318, W3618 &**  
**W3918**



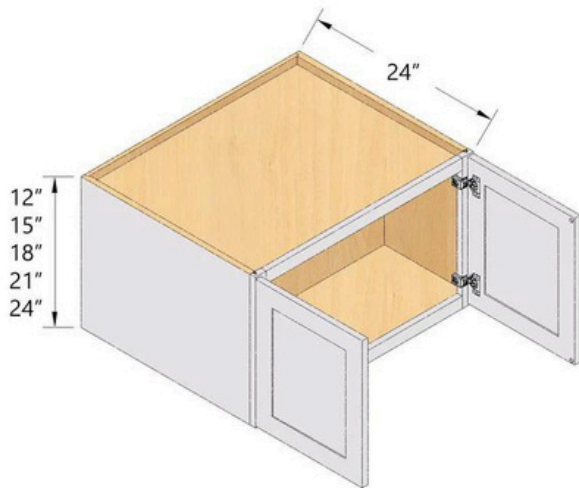
**WALL CABINET - 21" HIGH**  
**W3021, W3321 & W3621**



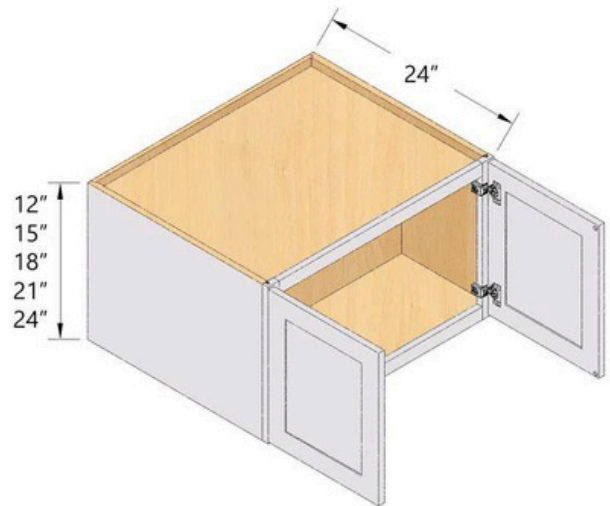
**WALL CABINET - 24" HIGH**  
**W2424, W3024, W3324, W3624 &**  
**W3924**



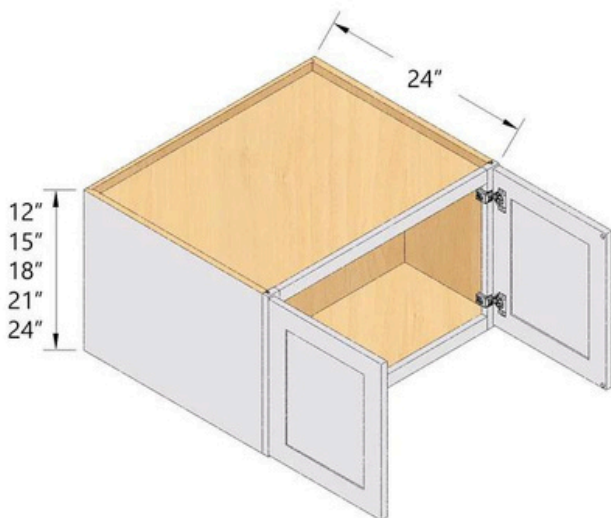
**DEEP WALL CABINET - 12" HIGH**  
**W301224, W331224, W361224 &**  
**W391224**



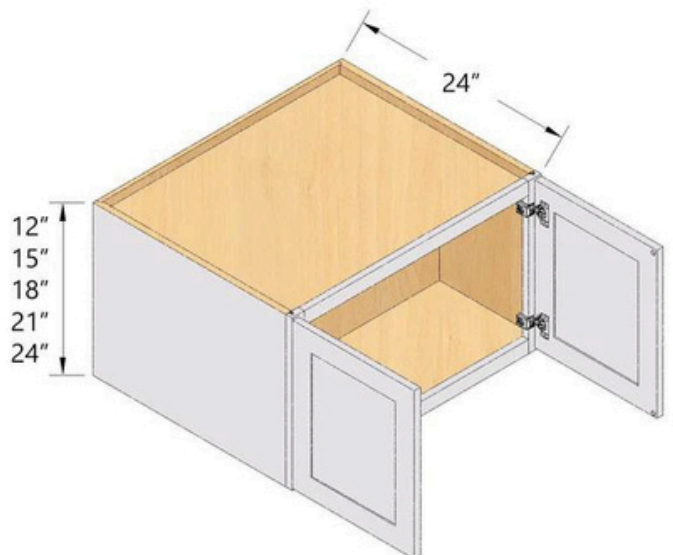
**DEEP WALL CABINET - 15" HIGH**  
**W301524, W331524, W361524 &**  
**W391524**



**DEEP WALL CABINET - 18" HIGH**  
**W301824, W331824, W361824 &**  
**W391824**

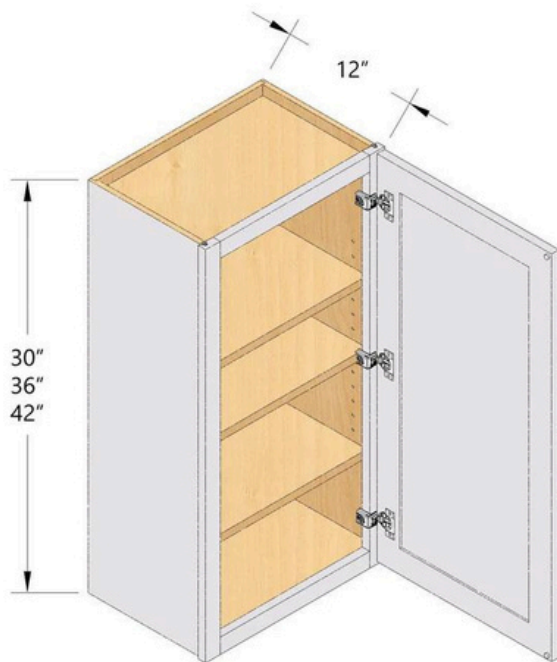


**WALL CABINET - 21" HIGH**  
**W362124**

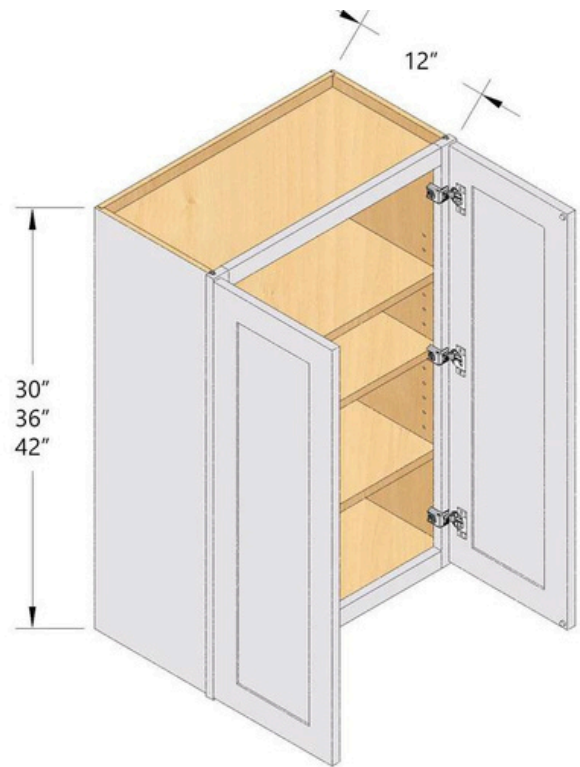


**DEEP WALL CABINET - 24" HIGH**  
**W302424, W332424, W362424 &**  
**W392424**

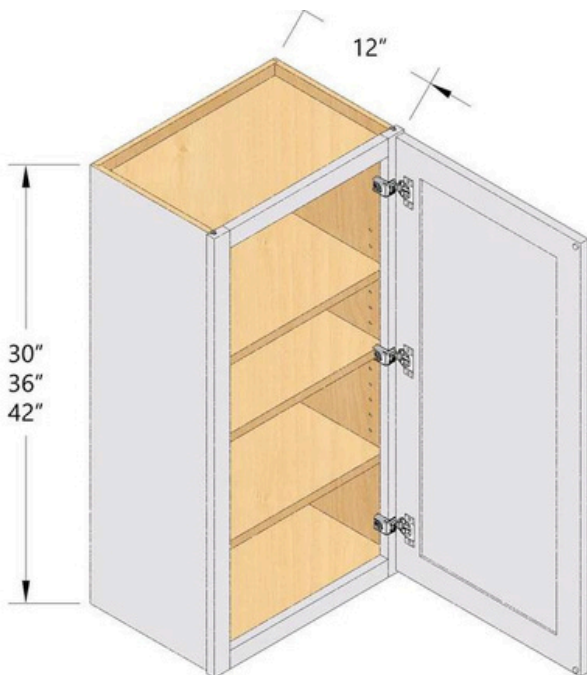




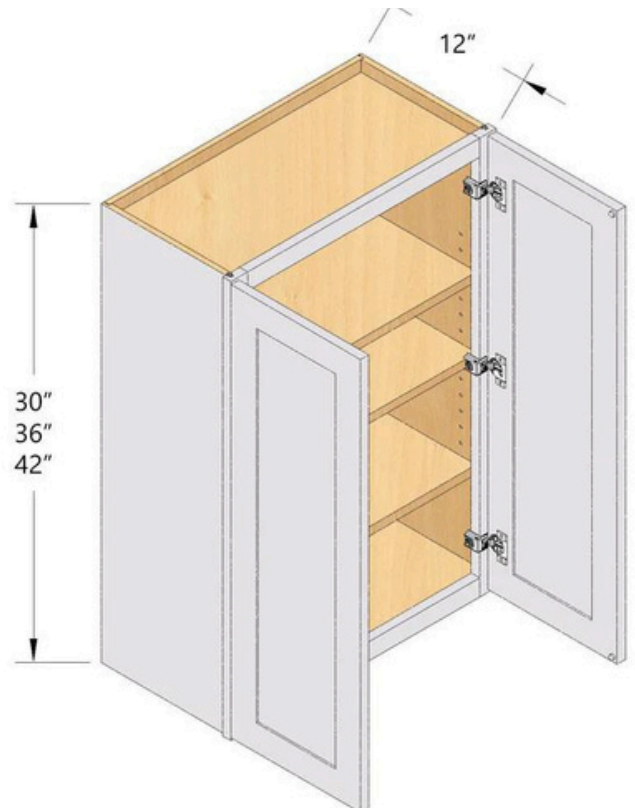
**WALL CABINET - 30" HIGH  
SINGLE DOOR CABINETS  
W0930, W1230, W1530, W1830 &  
W2130**



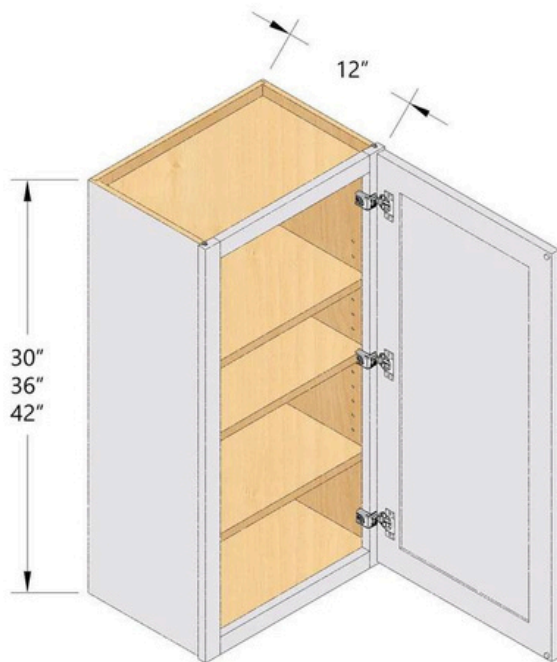
**WALL CABINET - 30" HIGH  
DOUBLE DOOR CABINETS  
W2430, W2730, W3030, W3330,  
W3630, W3930 & W4230**



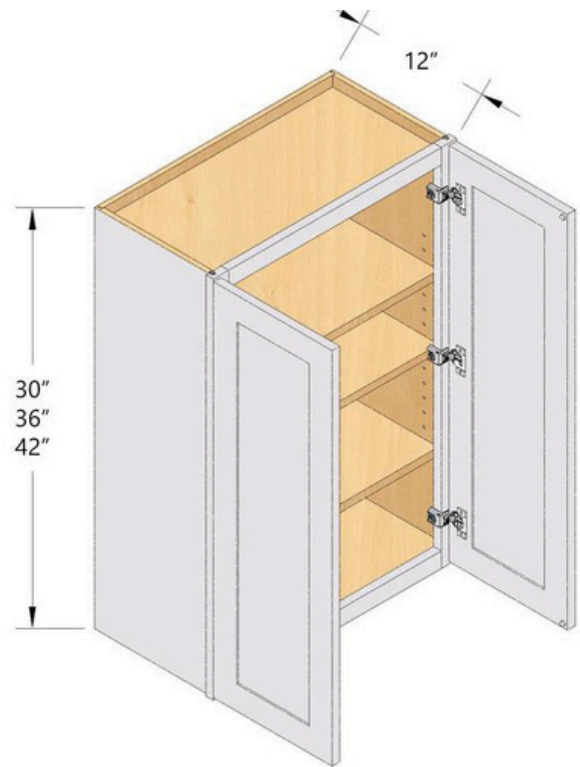
**WALL CABINET - 36" HIGH  
SINGLE DOOR CABINETS  
W0936, W1236, W1536, W1836 &  
W2136**



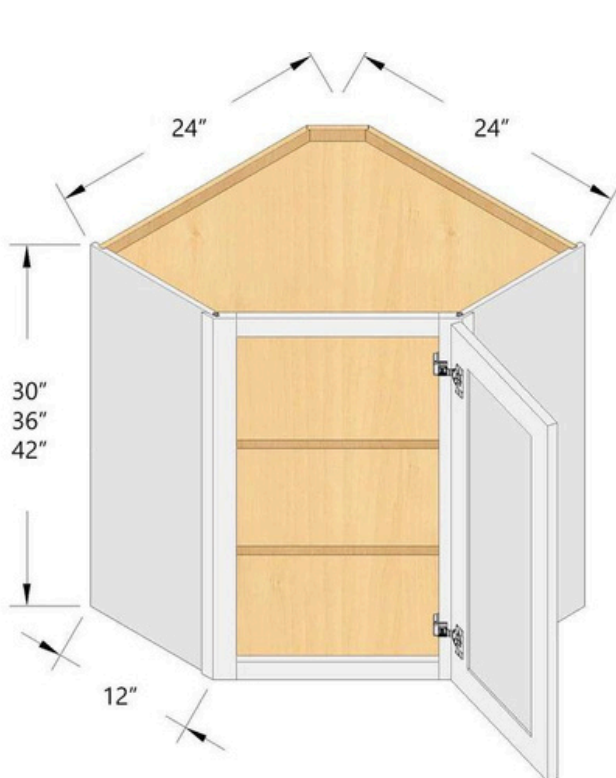
**WALL CABINET - 36" HIGH  
DOUBLE DOOR CABINETS  
W2436, W2736, W3036, W3336,  
W3636, W3936 & W4236**



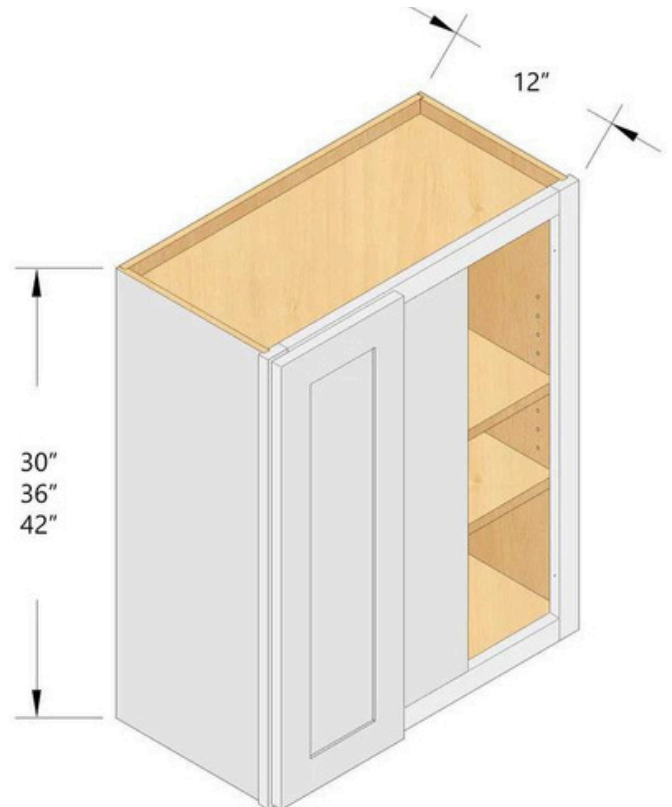
**WALL CABINET - 42" HIGH  
SINGLE DOOR CABINETS  
W0942, W1242, W1542, W1842 &  
W2142**



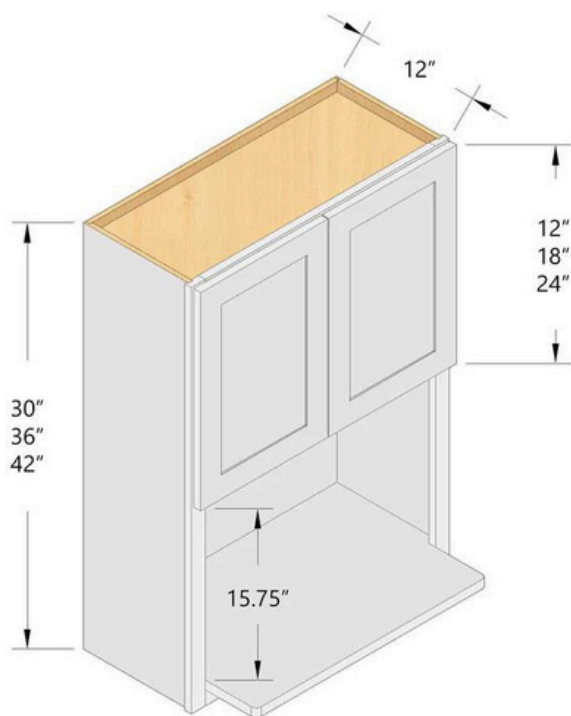
**WALL CABINET - 42" HIGH  
DOUBLE DOOR CABINETS  
W2442, W2742, W3042, W3342,  
W3642, W3942 & W4242**



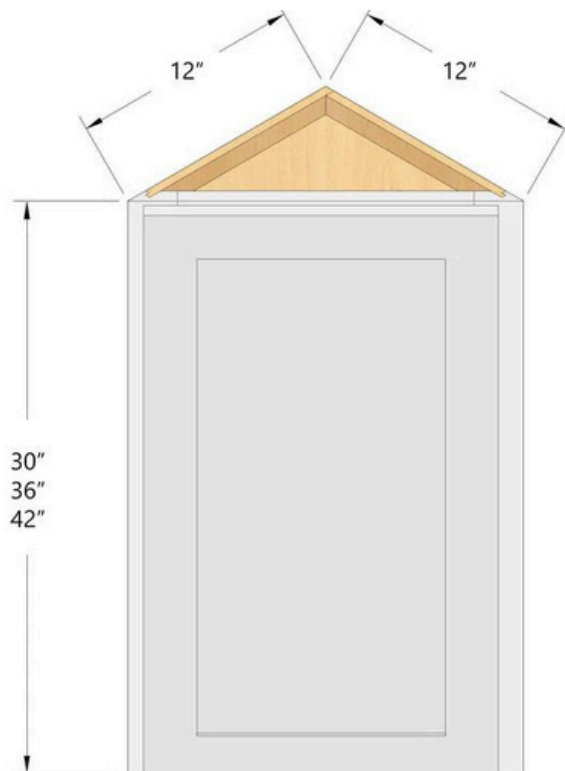
**WALL DIAGONAL CORNER  
30", 36" & 42" HIGH  
WDC2430, WDC2436 & WDC2442**



**WALL BLIND CORNER  
30", 36" & 42" HIGH  
WBC2730, WBC2736 & WBC2742**



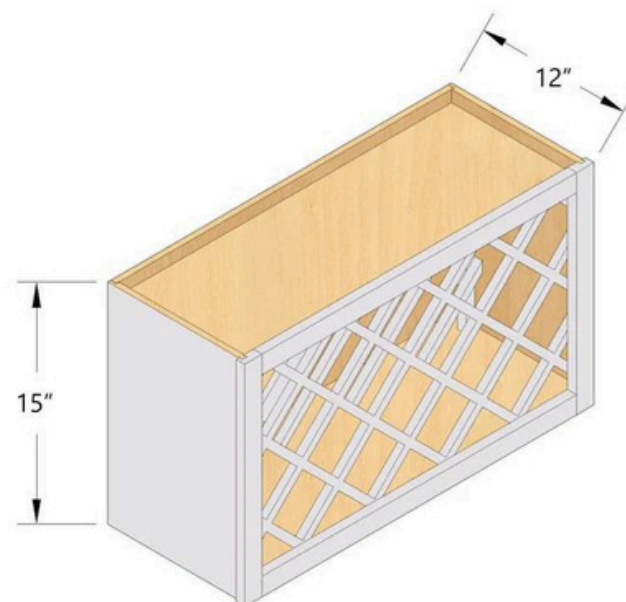
**WALL MICROWAVE CABINET**  
**30", 36" & 42" HIGH**  
**WM03030, WM03036 &**  
**WM03042**



**WALL ANGLE CABINET**  
**30", 36" & 42" HIGH**  
**AW1230, AW1236 & AW1242**

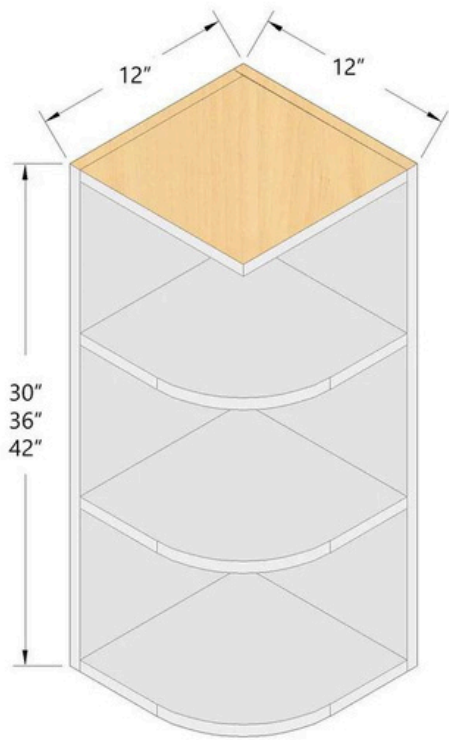


**WALL PLATE RACK CABINET**  
**WPR3015**

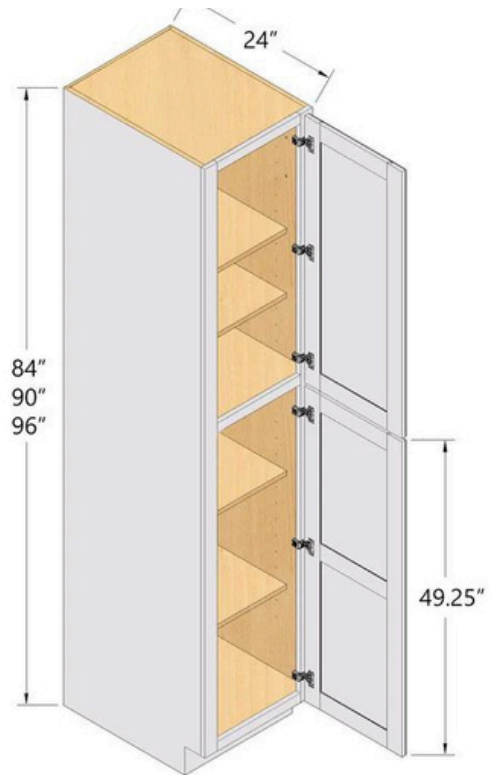


**WALL WINE RACK CABINET**  
**WRC3015 & WRC3615**

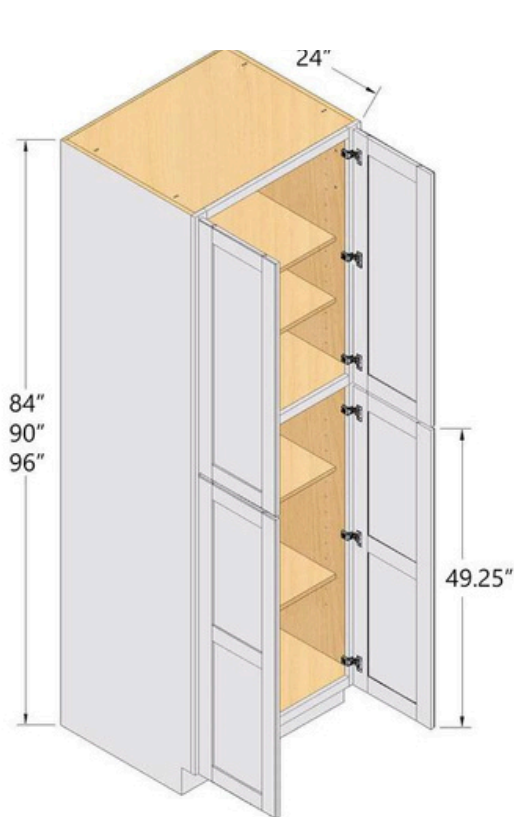




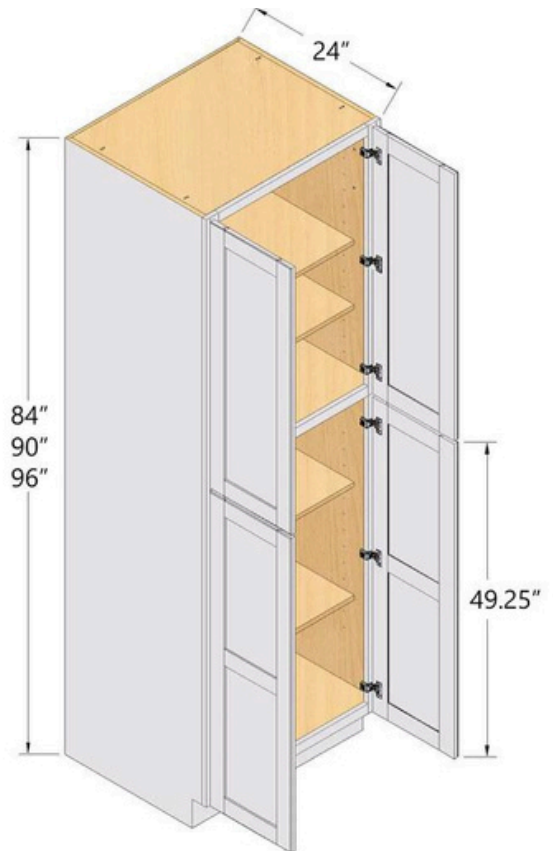
**WALL OPEN END CABINET**  
**30", 36" & 42" HIGH**  
**WOE1230, WOE1236 & WOE1242**



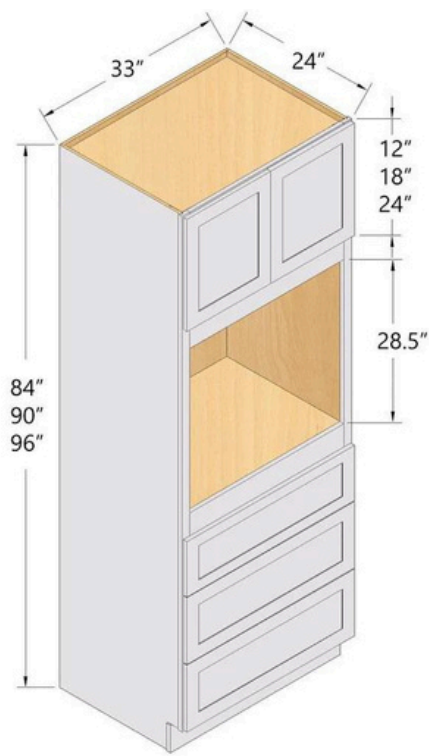
**18" WIDE TALL PANTRY CABINET**  
**84", 90" & 96" HIGH**  
**TP188424, TP189024 & TP189624**



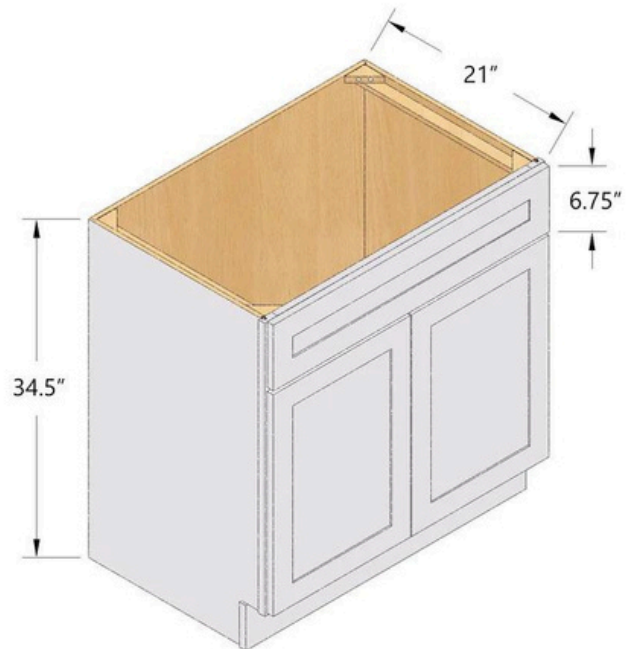
**24" WIDE TALL PANTRY CABINET**  
**84", 90" & 96" HIGH**  
**TP248424, TP249024 & TP249624**



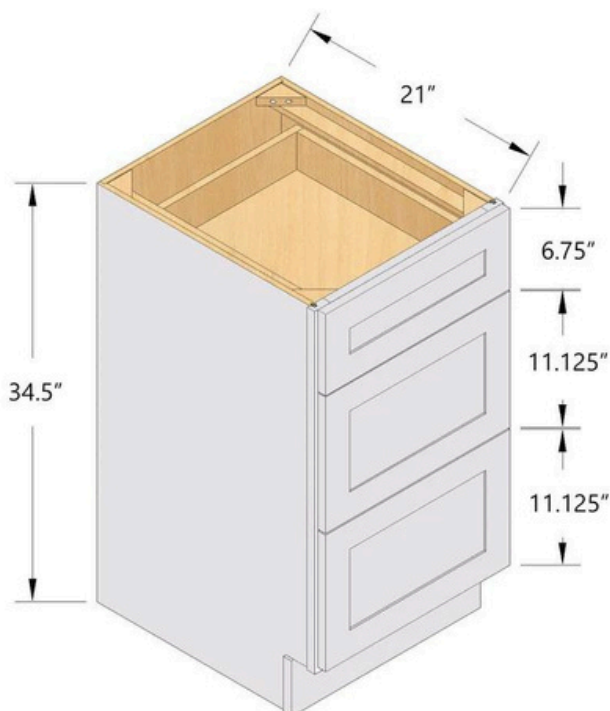
**30" WIDE TALL PANTRY CABINET**  
**84", 90" & 96" HIGH**  
**TP308424, TP309024 & TP309624**



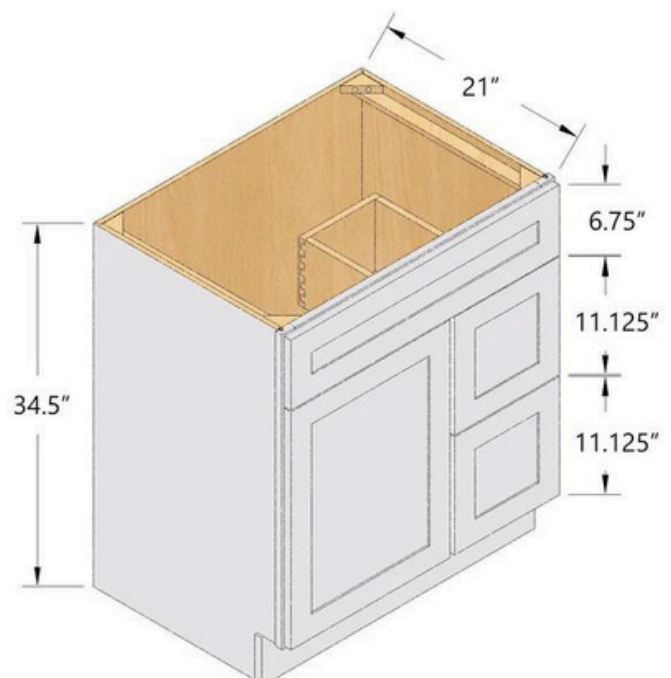
**33" WIDE OVEN CABINET**  
**84", 90" & 96" HIGH**  
**OC338424, OC339024 &**  
**OC339624**



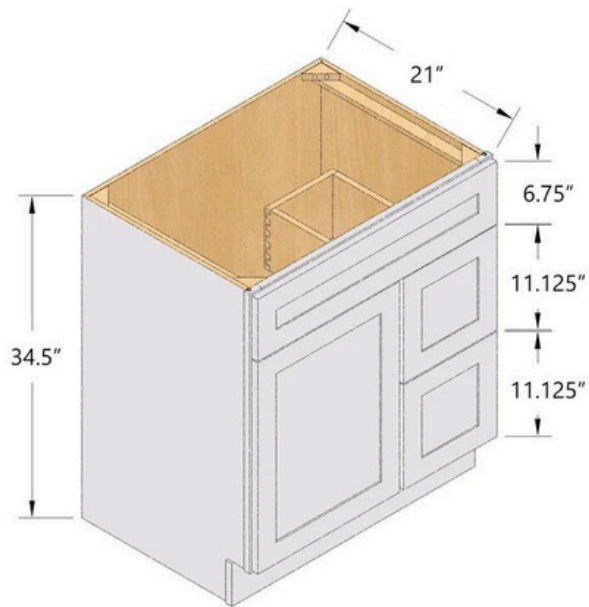
**VANITY SINK BASE CABINET**  
**24", 27", 30", 33" & 36" WIDE**  
**VSB24, VSB27, VSB30, VSB33 &**  
**VSB36**



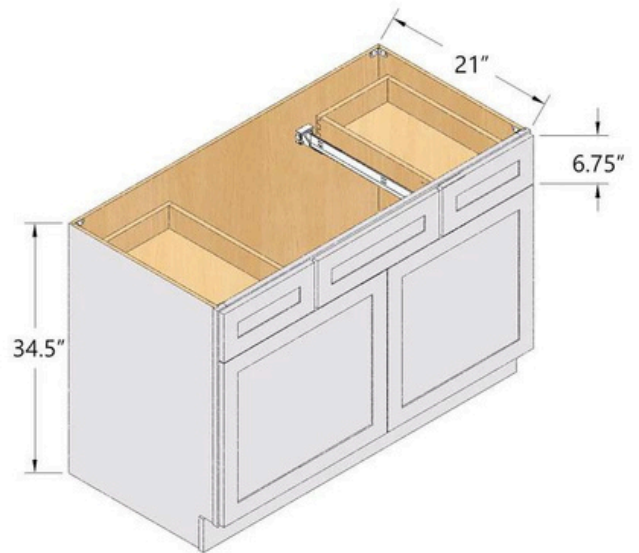
**VANITY DRAWER BASE CABINET**  
**12", 15", 18", 21" & 24" WIDE**  
**VDB12, VDB15, VDB18, VDB21 &**  
**VDB24**



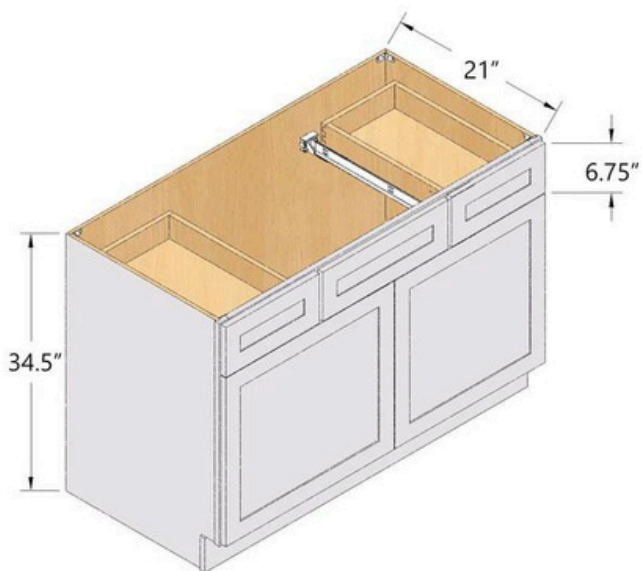
**30" WIDE VANITY COMBO SINK**  
**SPECIFY DRAWER LEFT OR RIGHT**  
**VSD30L & VSD30R**



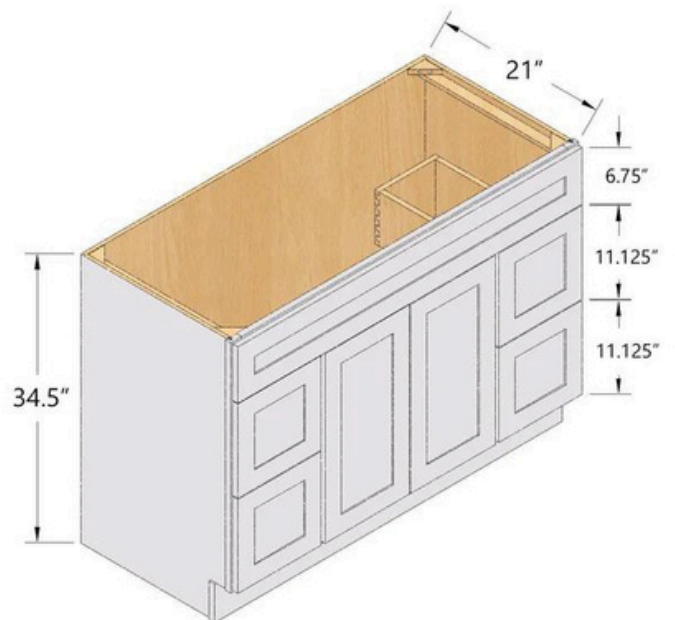
**36" WIDE VANITY COMBO SINK  
SPECIFY DRAWER LEFT OR RIGHT  
VSD36L & VSD36R**



**36" WIDE VANITY COMBO SINK  
DRAWERS TOP LEFT AND RIGHT  
VSD36**

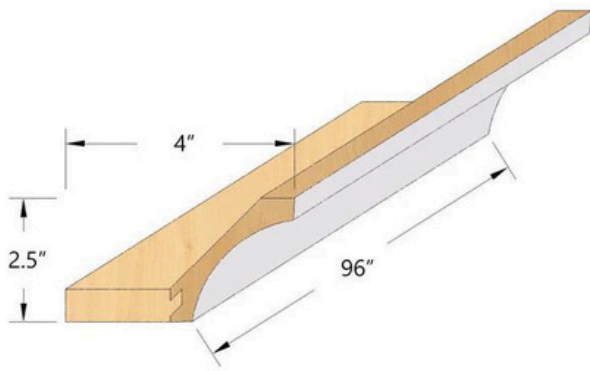


**42" WIDE VANITY COMBO SINK  
DRAWERS TOP LEFT AND RIGHT  
VSD42**

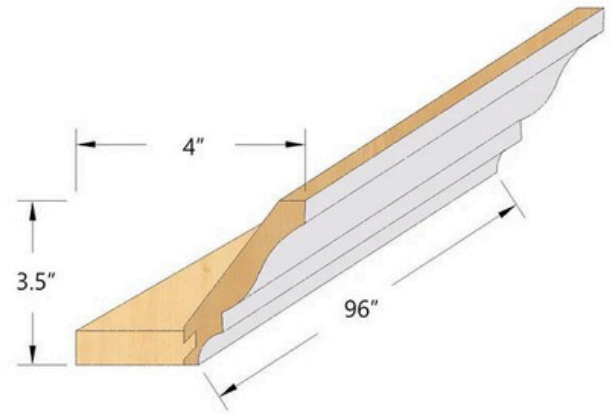


**48" WIDE VANITY DELUXE SINK  
VSD48D**

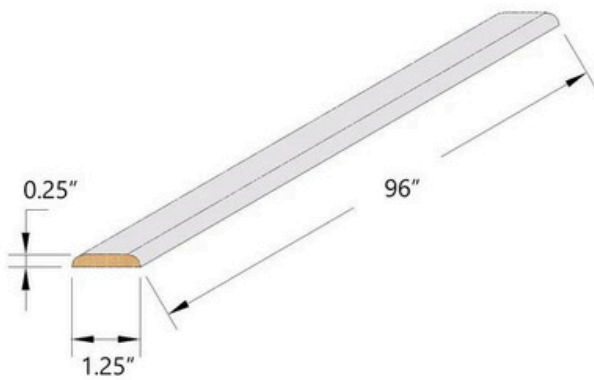




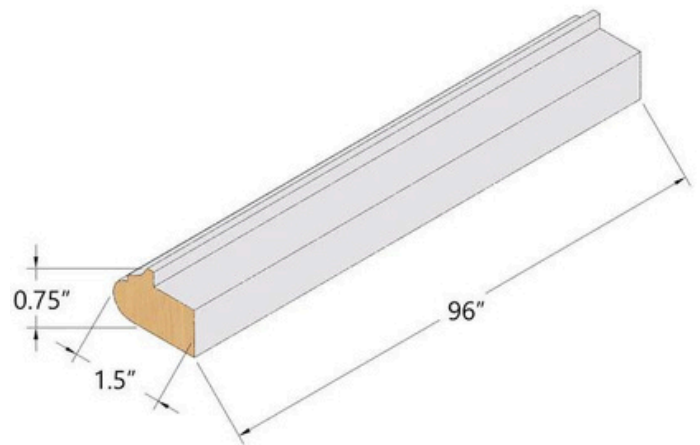
**CM4 - COVE CROWN MOLDING**



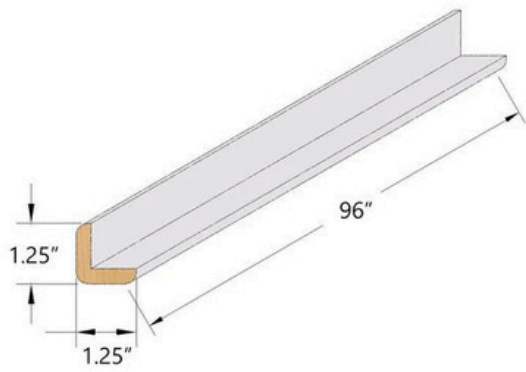
**CM6 - DECORATIVE CROWN  
MOLDING**



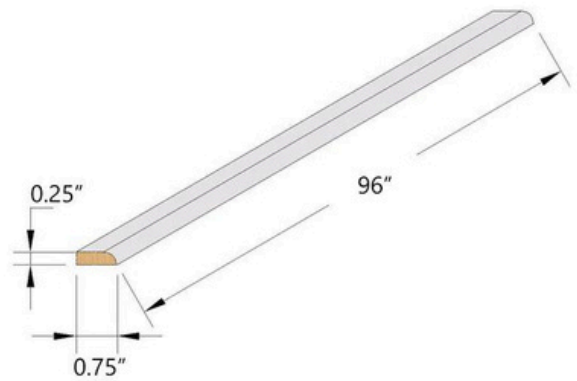
**BM8 - BATTEN MOLDING**



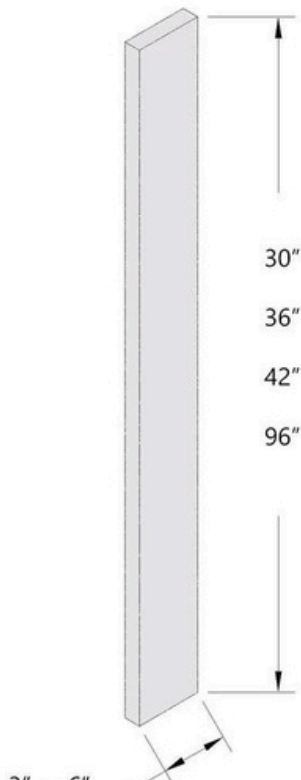
**LRM8 - LIGHT RAIL MOLDING**



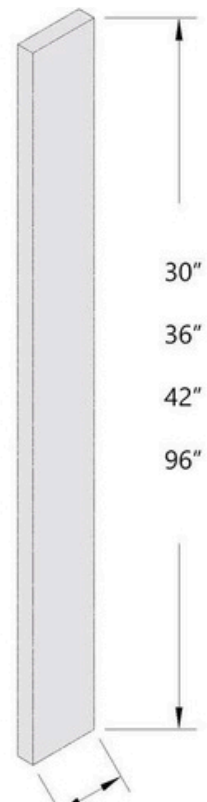
**OCM8 - OUTSIDE CORNER  
MOLDING**



**SM8 - SCRIBE MOLDING**



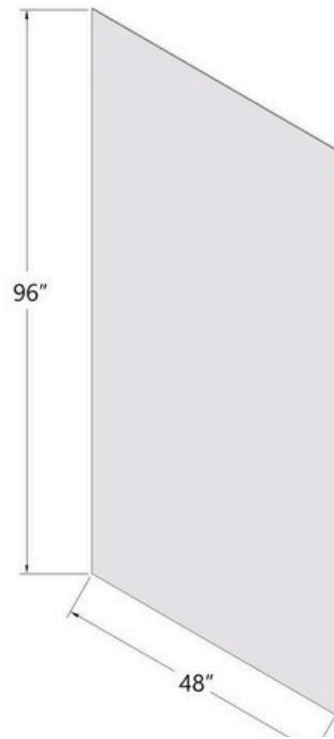
**3" & 6" WALL FILLER  
WF342 AND WF642**



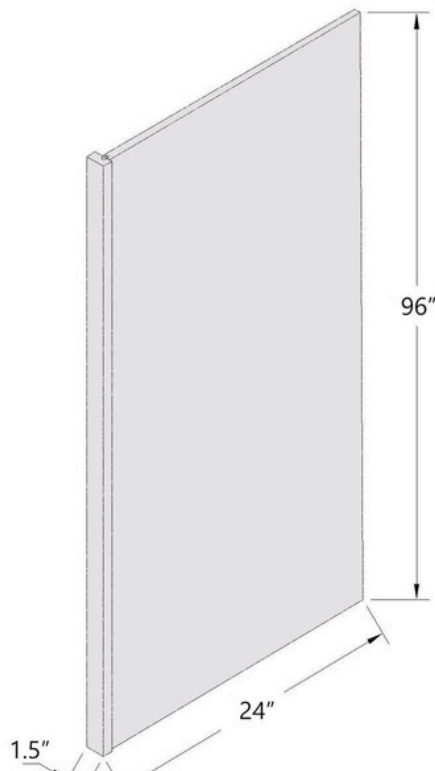
**3" & 6" TALL FILLER  
TF396 & TF696**



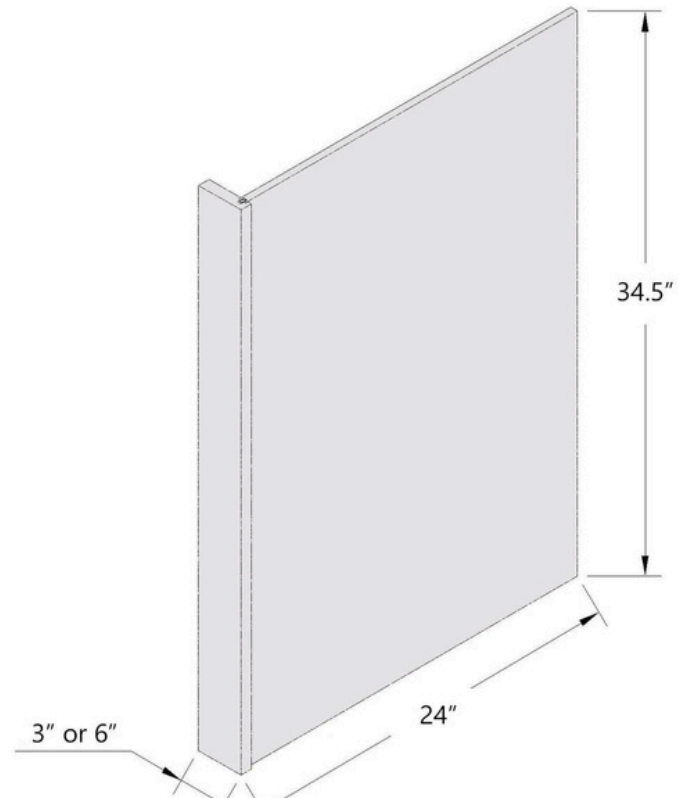
**BP3496.25 - 1/4" PANELING**



**BP4896.25 - 1/4" PANELING**

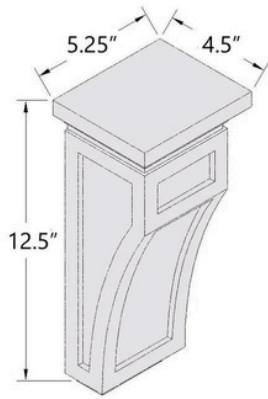


**REP96-1.5 - REFRIGERATOR  
END PANEL**

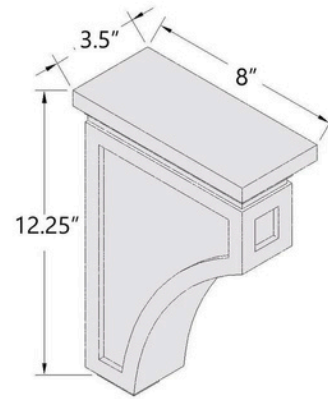


**DWR3 - DISHWASHER  
END PANEL**

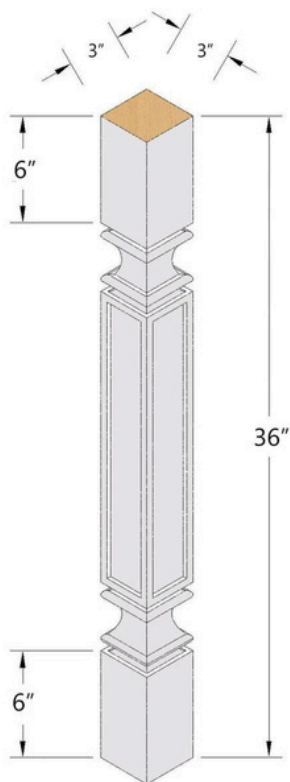




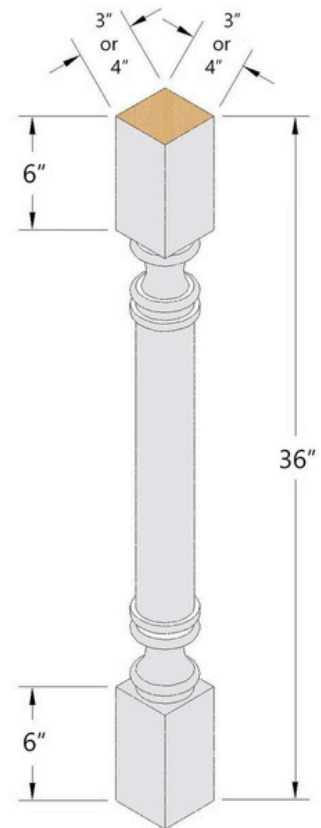
**CML - LARGE CORBEL**



**CMCB - EXTRA LARGE CORBEL**



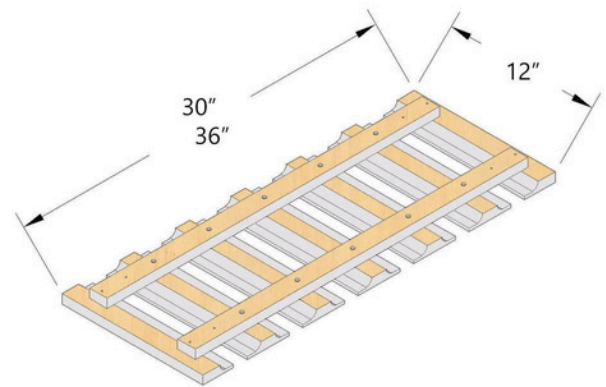
**SP336 - SQUARE ROMAN POST**



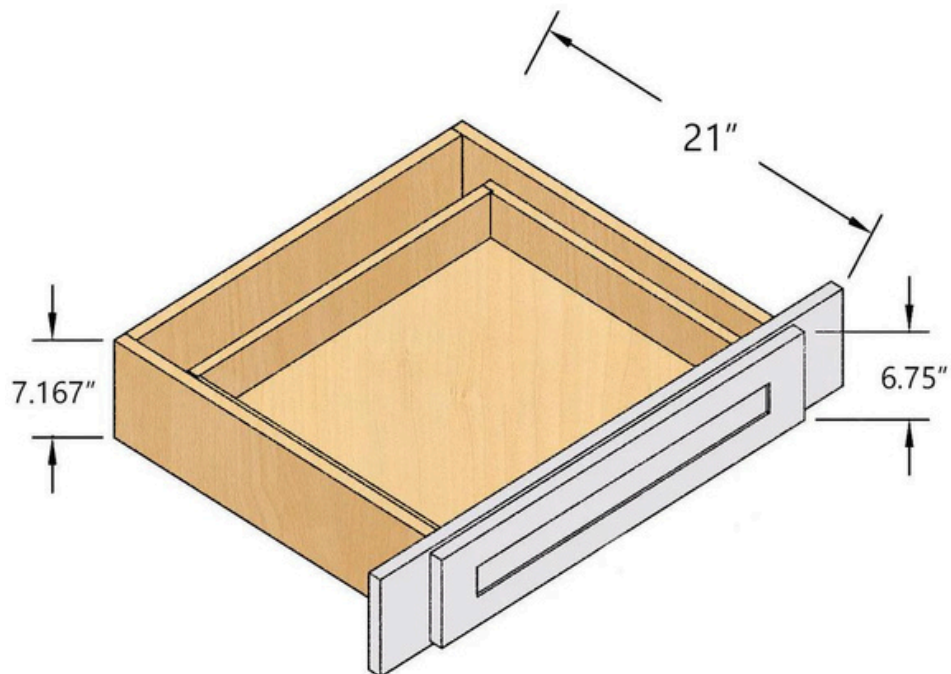
**RP336 - ROUND ROMAN POST**



**TUK - TOUCH UP KIT**



**STEM GLASS HOLDER  
SGH30 OR SGH36**



**KD30 - KNEE DRAWER**



# DISCOVER CABINETRY

## DEALER APPLICATION

### A. Contact Information

To ensure prompt handling of your application, please provide all information requested below.

- Business/Individual Name \_\_\_\_\_
- Mailing Address \_\_\_\_\_ City \_\_\_\_\_
- Delivery Address \_\_\_\_\_ State \_\_\_\_\_
- Postal/Zip Code \_\_\_\_\_ Email \_\_\_\_\_
- Phone # \_\_\_\_\_

### B. Account Information

- Tax Status ☐ Taxable ☐ Exempt
- Business Type \_\_\_\_\_
- Sales Tax # \_\_\_\_\_
- Us Customer-Federal Tax ID (EIN) or SSN \_\_\_\_\_

### C. Other

- Is a Purchase Order Required? \_\_\_\_\_
- Authorized to Purchase \_\_\_\_\_
- Accounts Payable Contact \_\_\_\_\_
- Phone # \_\_\_\_\_ Email \_\_\_\_\_

Name (Signature) \_\_\_\_\_

Name (Print) \_\_\_\_\_ Date \_\_\_\_\_

Title \_\_\_\_\_

Additional Comments:

\_\_\_\_\_  
\_\_\_\_\_  
\_\_\_\_\_  
\_\_\_\_\_

Return Application to: [sales@discovercabinetry.com](mailto:sales@discovercabinetry.com)

Thank you and we look forward to working with you!

Sincerely,

Jeff Hawkins  
President

## Discover Cabinetry Product Warranty

Discover Cabinetry warrants all of its products to be free of defects in workmanship and material for a period of one year (12 months) from the date of purchase. This limited warranty applies only to the use of Discover Cabinetry products in normal residential use. Defects are defined as any imperfection that may prohibit the use of the cabinet in normal residential applications or which otherwise do not measure up to our quality standards. This warranty applies to the original owner and cannot be transferred to subsequent owners.

### Disclaimers

Defects do not include items beyond our reasonable control, including but not limited to the following:

- **Wood and Color Variations.** Natural variations in the color, textures and grain of the wood used to manufacture our cabinets or changes in the color of the wood caused by the natural aging process of the wood material are not considered defects.
- **Wood Doors.** Changes to wooden doors caused by changes in humidity, temperature and other local atmospheric conditions are not considered defects. Door warpage of up to 1/4" shall not be considered a defect.
- **Painted Finishes.** Changes (such as finish stress lines) caused by the use of diffuse porous woods (such as birch) or by changes in humidity, temperature and other local atmospheric conditions are not considered defects.
- **Glazed Finishes.** Glazed finishes are by nature uneven, and some edges and profiles will be larger than others. Glazed finishes may vary from item to item, resulting in variations in color, texture and finish. These types of variations are not considered defects.

Defects or damage caused by improper assembly or disassembly, intentional damage, misuse, product modifications, exposure to the elements, accident, or negligence on the part of persons other than Discover Cabinetry is not covered by this limited warranty.



Discover Cabinetry reserves the right to discontinue or modify any of its products without notice and shall not be liable for providing warranty replacements in the event of such discontinuance. If Discover Cabinetry replaces any product under this warranty, it may substitute parts of products designated by Discover Cabinetry to be of comparable quality or price in the event the parts or products initially purchased have been discontinued.

Discover Cabinetry's obligation under this limited warranty is expressly limited to the replacement of the affected cabinets or component parts, at our discretion. This limited warranty does not cover the cost of assembly, installation, removal, subsequent damage or transportation of the defective products regardless of the work performed by customers or by a contractor, service company or consumer. Without limiting the foregoing, labor charges for removal or installation of warranted materials, as well as incidental and consequential damages, are excluded

### **Claims Policy**

All product must be inspected upon receipt for damage. ***Claims for damages not related to manufacturing defects must be submitted within 7 business days of receipt of product.*** Claims submitted after 7 business days that are not found to be manufacturing related, may be denied. Freight claims for noticeable damage or shortages must be notated on the bill of lading at the time of delivery. To submit a claim, all documentation including pictures of the damage, proof of purchase and/or order numbers must be provided.

Product may be returned to Discover Cabinetry with a 25% restocking fee if the following criteria is met:

- The product is not assembled (flat pack only)
- The return is initiated within 60 days of receipt of the product
- The product is not damaged and is in original packaging
- The product has not been discontinued



DISCOVER CABINETRY

## Contact

Phone: 800.861.2535

Web. [www.discovercabinetry.com](http://www.discovercabinetry.com)

Email: [sales@discovercabinetry.com](mailto:sales@discovercabinetry.com)