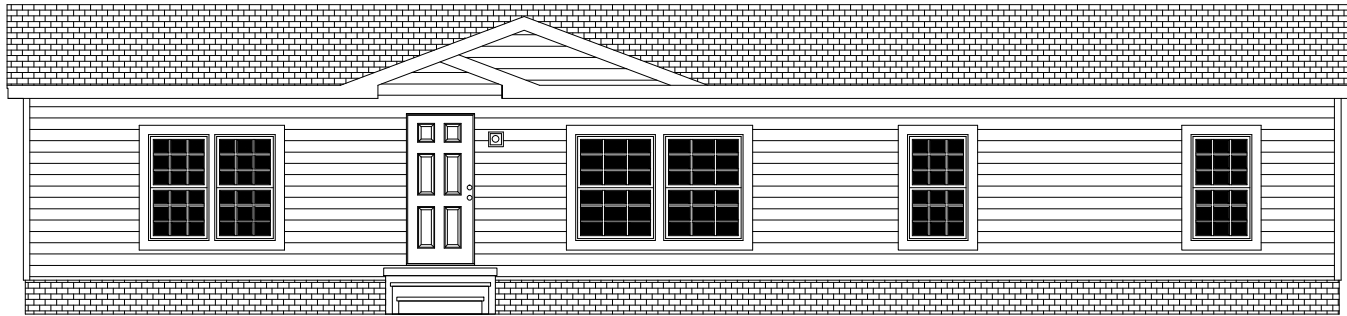
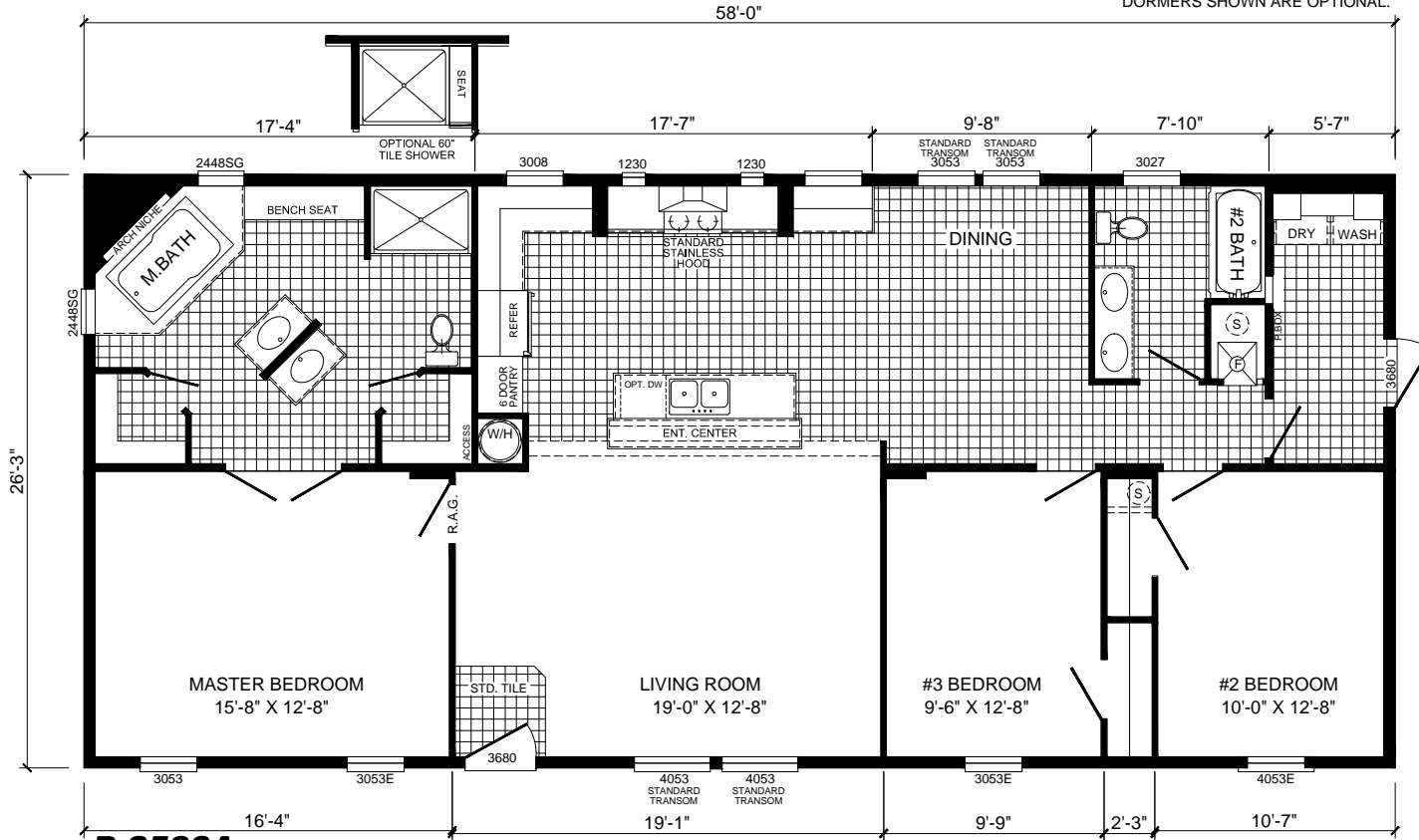


PRINCETON



DORMERS SHOWN ARE OPTIONAL.



P-2583A

3-BEDROOM / 2-BATH

28 x 62 - Approx. 1508 Sq. Ft.

Date: 1-30-2014

* All room dimensions include closets and square footage figures are approximate.
 * Transom windows are available on optional 9'-0" sidewall houses only.