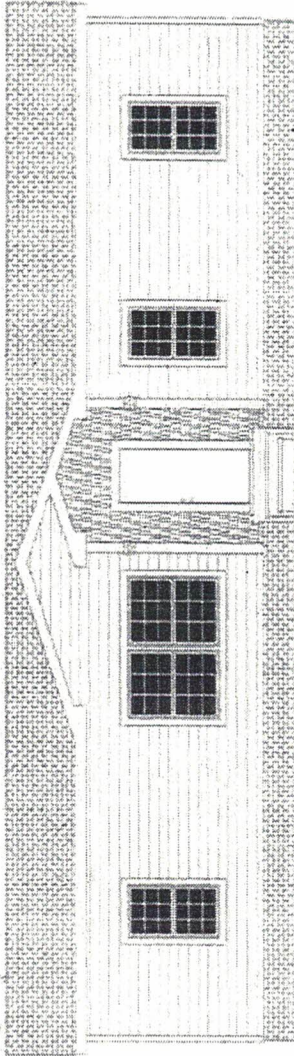
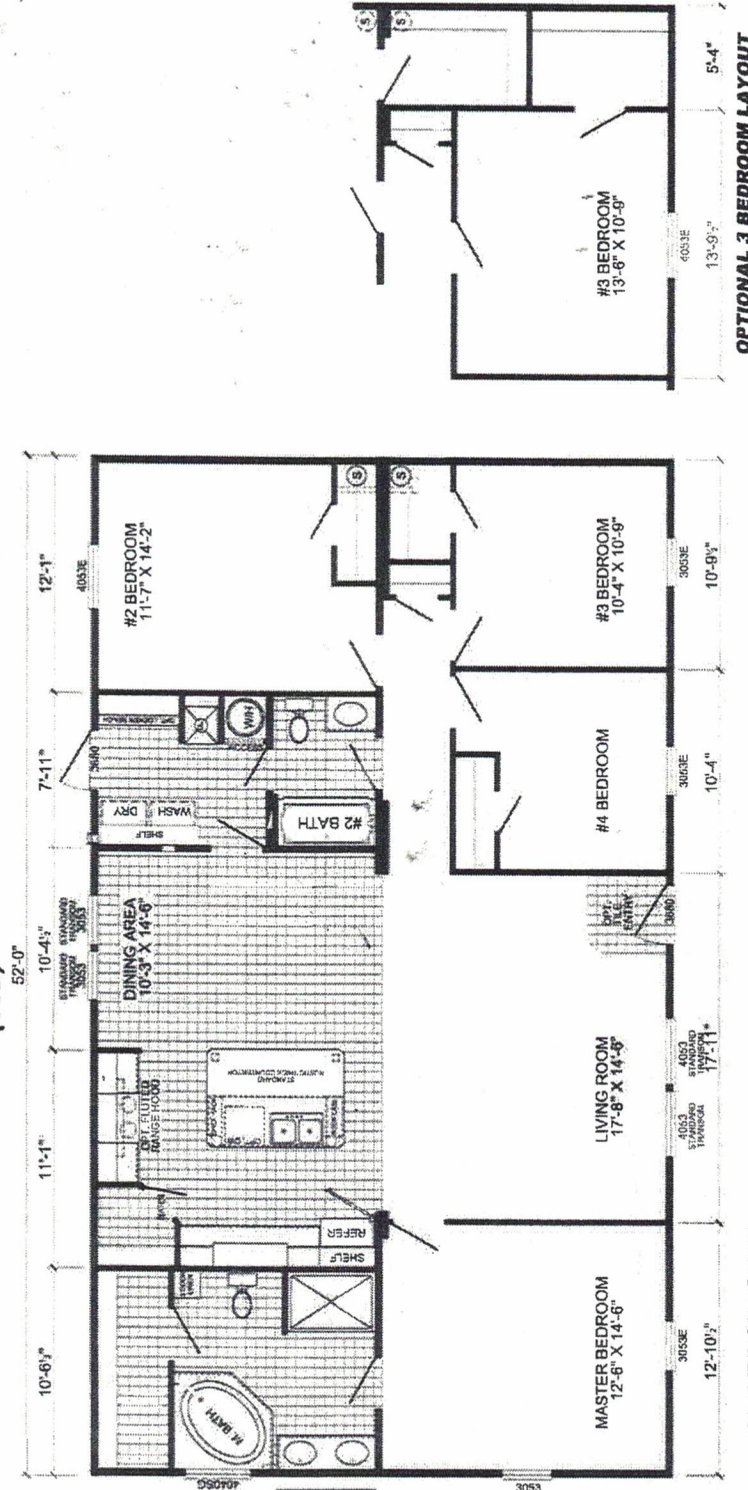


DUKE



EXTERIOR VINYL SHAKER PACKAGE (STD)



OPTIONAL 3 BEDROOM LAYOUT

OAKS
Signature Series

Date: 05/23/19
 * All room dimensions include closets and square footage figures are approximate.
 * Transom windows are available on optional 9'-0" sidewalk houses only.
 * Underpinning shown is optional.
 * Live Oak Homes reserves the right to modify product offering at any time.