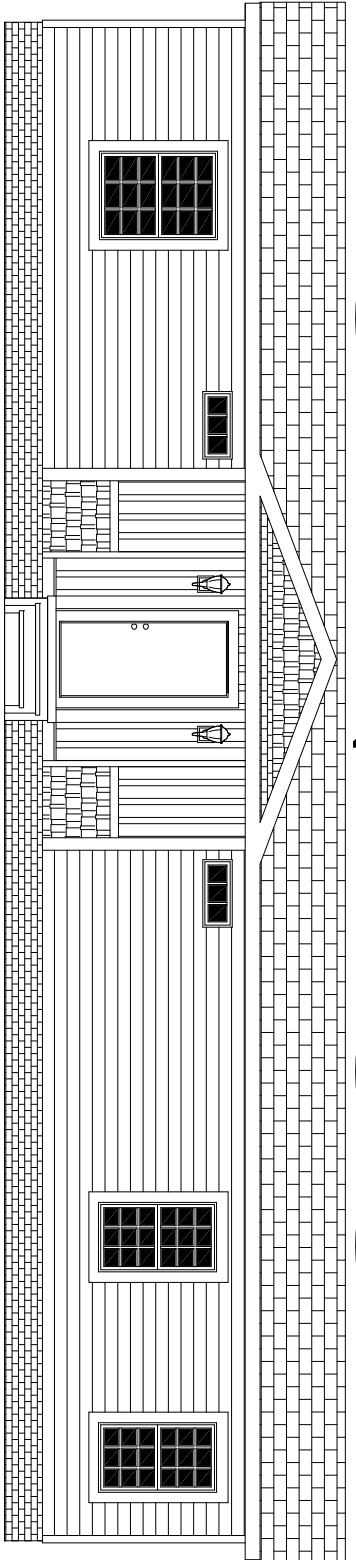
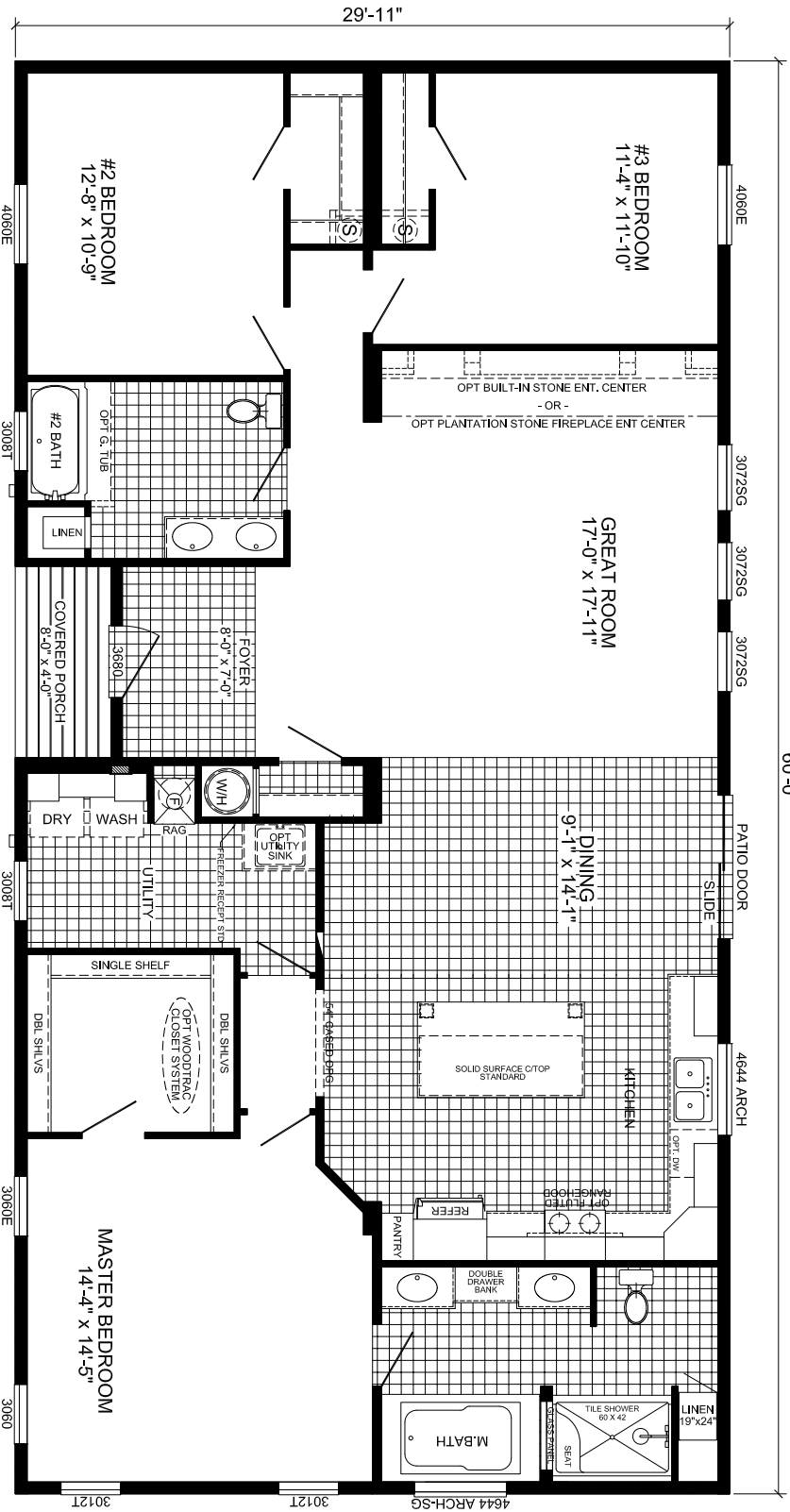


HOMMEWOOD



**SHAKE w/ VINYL B&B EXTERIOR (STD)
(OPT SHAKE w/ CEMENT B&B)**

60'-0"



P-3603N

**3-BEDROOM / 2-BATH
32 X 64 - Approx. 1795 Sq. Ft.**

Date: 01/06/21

* All room dimensions include closets and square footage figures are approximate.
* Transom windows are available on optional 9'-0" sidewall houses only.