

How to apply for DDDP/SIIT

Prof. Stanislav Makhanov

School of Information, Computer and
Information Technology

Sirindhorn International Institute of Technology
Thammasat University

131 Muang Pathum Thani 12000, Thailand

Phone : +66 (0) 2501 3505-20

Fax: +66 (0) 2501 3524

Email: makhanov@siit.tu.ac.th



How to apply for DDDP/CU

Prof. Hideaki Haneishi

Center for Frontier Medical Engineering

Chiba University

1-33, Yayoi-cho, Inage-ku, Chiba 263-8522

Phone/Fax: +81-43-290-3405

Email: haneishi@faculty.chiba-u.jp

Two degrees in four years
Two years in Thailand
Two years in Japan
Free tuition



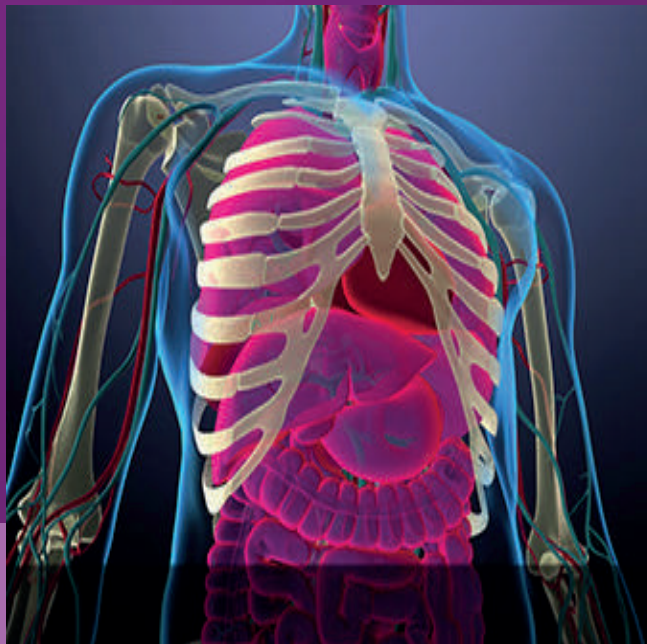
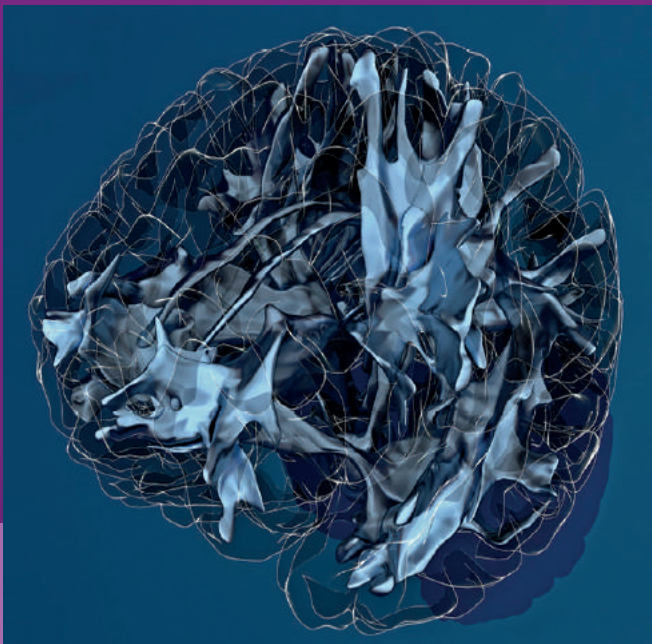
Why should you join the Double Degree Doctoral Program in Biomedical Engineering ?

- Invest in your future, by obtaining two international PhD degrees
- Work and study with the best instructors
- Work and study in the interdisciplinary, multicultural environment
- Make connections with people, companies and universities in Japan and Thailand
- Increase your financial prospects
- Contribute to the world's knowledge and to the society



Joint Double Degree Doctoral Program in Biomedical Engineering





Joint Double Degree Doctoral Program in Biomedical Engineering: Sirindhorn International Institute of Technology of Thailand / Chiba University (CU) of Japan

The double degree doctoral program (DDDP) produces engineers and scientists capable of solving advanced problems in medicine and biology using computers. The examples are analysis of ultrasound and CT-scan images, retinal images, signal processing of human neural systems, producing smart prosthetics, medical implants and development of new medical devices.

The cooperation between School of Information, Computer, and Communication Technology/ Biomedical Engineering Unit of SIIT (BiomedSiit.com) from one side and Department of Medical System Engineering, Faculty of Engineering of Chiba University creates a fantastic opportunity for graduate students to work in the interdisciplinary and multicultural environment at the cutting edge of this exciting discipline.

The DDDP students are jointly supervised by the best and the most qualified instructors from SIIT and Chiba University. The DDDP students enrolled by SIIT stay at SIIT during the first and the third years and at CU during the second and the fourth years. The DDDP students enrolled by CU stay at CU during the first and the third years and at SIIT during the second and the fourth years.

During their studies the students will be provided the opportunity to study the Thai and the Japanese languages.

After four years of study the DDDP students who have fulfilled the academic requirements of both SIIT and CU are awarded the doctoral degrees of SIIT and CU. Obtaining the degree solely from CU or SIIT is not allowed.

CU waives the entrance examination, admission, registration, and tuition for SIIT students whereas SIIT waives the entrance examination, admission, registration, and tuition for CU students.

SIIT students can be provided with an additional financial support or scholarships such as Excellent Thai Student Scholarship (ETS) or Excellent Foreign Student (EFS) Scholarship. For SIIT students it is advisable to apply to DDDP and ETS/EFS at the same time.

SIIT cooperates with the Thailand government agencies to provide an additional financial support for research and to increase the student's living allowance.

The CU students can be awarded by relevant scholarships provided by the Japanese government and research agencies.