



Bellevue East High School Band
1401 High School Drive
Bellevue, NE 68005
(402) 293-4174
<http://www.cheiftainband.com/>

Charles A. Wright, Director of Bands – charles.wright@bpsne.net
Kyle Sandall, Assistant Director of Bands – kyle.sandall@bpsne.net

PERFORMANCE INFORMATION

EVENT: UNO Jazz Festival
GROUP: Jazz Ensemble
DATE: Friday, February 23, 2018
LOCATION: UNO

TIMES:

11:00 AM - Jazz Ensemble Reports and loads (BRING A LUNCH)
12:00 PM – Jazz Ensemble Departs for UNO
12:30 PM - Arrive at UNO and go to homeroom
1:00 PM - Watch Jazz Ensembles
2:00 PM - Return to Home and prepare for performance
3:00 PM – Jazz Ensemble performs
4:15 PM - Load Bus and Depart for East
4:45 PM – Arrive at East and unload equipment

EQUIPMENT: Instrument, Music, Mutes

DRESS: All Black, Tasteful Tie

Thank you for all the hard work you have done in preparing for this concert! I am very proud of you!

Mr. Wright

2018 UNO Great Plains Jazz Festival

Friday, February 23 Milo Bail Student Center (MBSC) Ballroom

Class	School	Group Name	Director	Homeroom	Perform
AA	Papillion LaVista	Monarch Jazz Orchestra	Tim Keller	MBSC Nebraska	8:00am
AA	Bellevue West	Jazz Ensemble	Pat Hunninghake	MBSC Nebraska	8:30am
AA	Papillion LaVista South	Silver Tones	Joe Homan	MBSC Council	9:00am
A	Waverly	Jazz Ensemble	Jim Kucera	MBSC Nebraska	9:30am
AA	Benson	Jazz Bunnies	Andrew Brown	MBSC Nebraska	10:00am
AA	Elkhorn	Jantlers	Matthew Rom	MBSC Nebraska	10:30am
AA	Papillion LaVista South	Combo	Joe Homan	MBSC Council	11:00am
C/D	Brownell Talbot	Raider Blues Combo	J. R. Gould	MBSC Redick	11:30am

12:00pm UNO Jazz Ensemble with Indrikis Veitners,

Barry Long, Rick Hirsch, & Jim McFalls

AA	Lewis Central	Jazz Ensemble	Dan Tucker	MBSC Tower	1:00pm
AA	Gretna	Jazz Ensemble	Andrew Norris	MBSC Omaha	1:30pm
AA	Millard North	Jazz Ensemble	Ryan Placek	MBSC Nebraska	2:00pm
AA	Kearney	Jazz Ensemble	Nathan LeFeber	MBSC 222	2:30pm
AA	Bellevue East	Jazz Ensemble	Charles Wright	MBSC Nebraska	3:00pm
AA	Brandon Valley	Jazz Ensemble	Chris Borchardt	MBSC Nebraska	3:30pm
AA	Bryan	Jazz Ensemble	Chris Cotignola	MBSC Nebraska	4:00pm
A	Skutt	Jazz Ensemble	Rosario Nelson	MBSC Omaha	4:30pm

5:00pm UNO Jazz Combo I

A	Nebraska City	Pioneers of Jazz	Emily Roth	MBSC Nebraska	5:30pm
A	Blair	Jazz Ensemble	Jeff Mount	MBSC Council	6:00pm
A	Chilicothe	Jazz Ensemble	Cavanah and Hull	MBSC Nebraska	6:30pm

Friday, February 23 Milo Bail Student Center (MBSC) Dodge Room

Class	School	Group Name	Director	Homeroom	Perform
VI	Brownell Talbot M.S.	Jazz Combo	J. R. Gould	MBSC Redick	8:00am
VI	Lewis Central M.S.	Titan Jazz 8	Johnny Kurt	MBSC Tower	8:30am
VI	Pound M.S.	Jazz Ensemble	Scott Vicroy	MBSC Nebraska	9:00am
C/D	Brownell Talbot	Gold Tones Combo	J. R. Gould	MBSC Redick	9:30am
VI	Mission M.S.	Jazz Ensemble	Mark Benson	MBSC Nebraska	10:00am
B	Treynor	Jazz Ensemble	Jeff Schoening	MBSC Nebraska	10:30am
VI	Lewis & Clark M.S.	Scout Jazz Band	Brandi Kawula	MBSC Nebraska	11:00am
C/D	Centennial	Sapphire Swing	Liz Purdham	MBSC Nebraska	11:30am

12:00pm BREAK

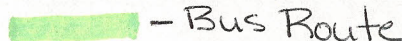
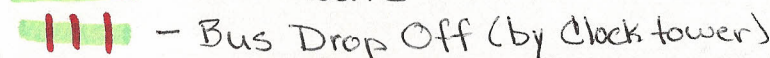
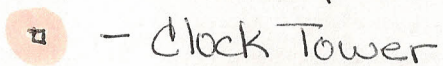
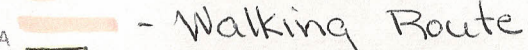
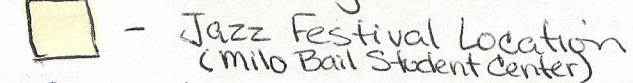
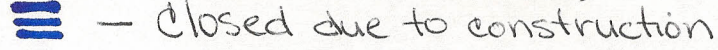
VI	Logan Fontenelle M.S.	Jazz Ensemble	Schuttler & Casart	MBSC Nebraska	1:00pm
AA-2	Kearney	Jazz Lab Band	Rick Mitchell	MBSC 222	1:30pm
VI	Waverly M.S.	Jazz Ensemble	Jim Kucera	MBSC Nebraska	2:00pm
VI	Papillion M.S.	Titan Jazz Band	Zac Konrad	MBSC Nebraska	2:30pm
AA-2	Papillion LaVista	Blue Notes	Joe Homan	MBSC Council	3:00pm
AA-2	Gretna	Jazz Ensemble II	Landon Barada	MBSC Omaha	3:30pm
A-2	Blair	Jazz Ensemble II	Jeff Mount	MBSC Council	4:00pm
AA-2	Millard North	Stage Band	Craig Mathis	MBSC Nebraska	4:30pm
C/D	Homer	Jazz Ensemble	Noelle Petersen	MBSC Tower	5:00pm
B	Pierce	Jazz Ensemble	Mike Sindt	MBSC Nebraska	5:30pm
B	Platteview	Jazz Ensemble	Jerry Layher	MBSC Redick	6:00pm
B	Concordia	Jazz Ensemble	Peter Klemp	MBSC Nebraska	6:30pm

8:00pm Awards/Concert: Rick Hirsch's Big Ol' Band PLUS

Metropolitan Area Youth Jazz Orchestra with Indrikis Veitners

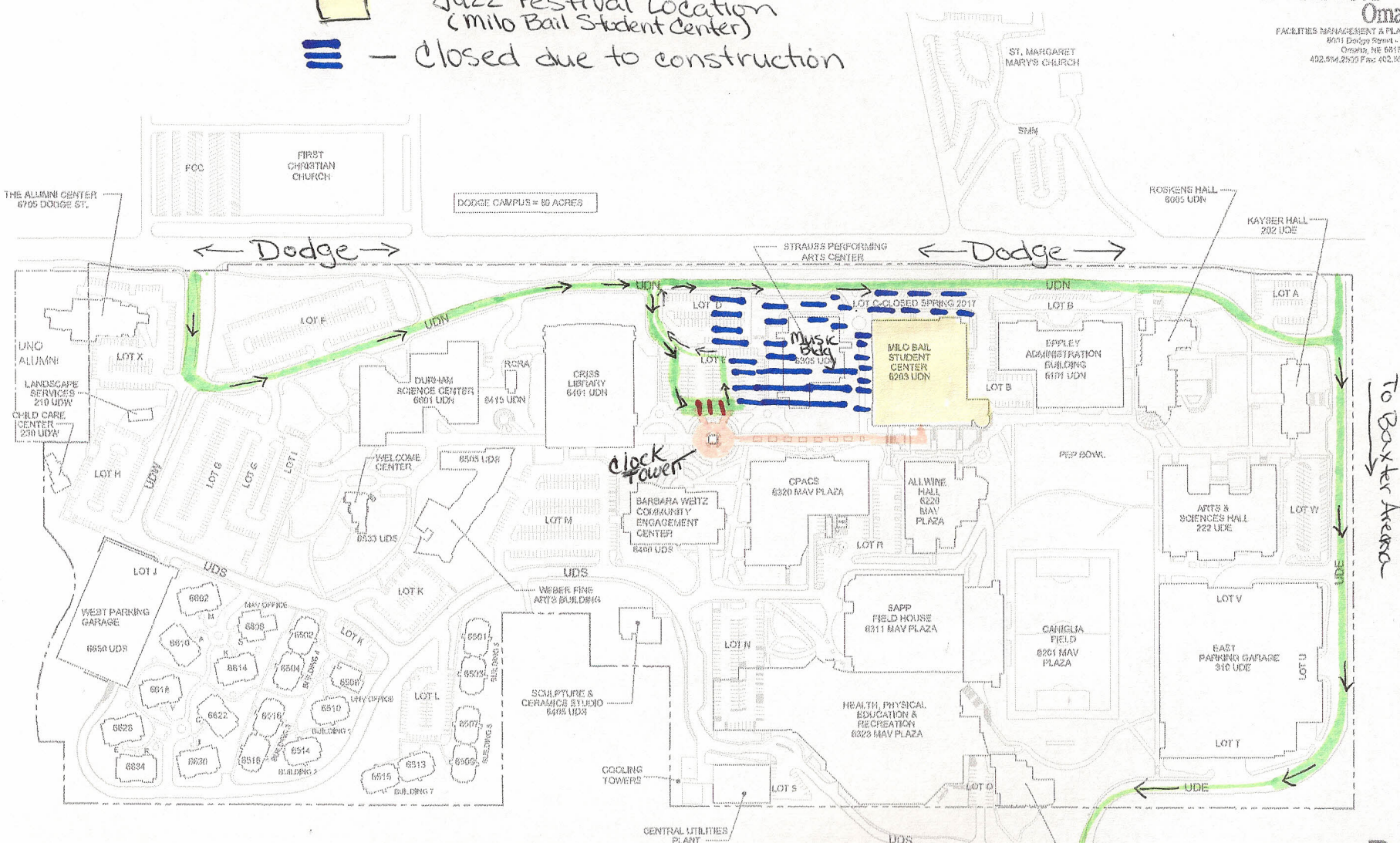
\$15 general public/\$5 students

Tickets for the 8:00pm Rick Hirsch Big Ol' Band concert will be available online soon

-  - Bus Route
-  - Bus Drop Off (by Clock tower)
-  - Clock Tower
-  - Walking Route
-  - Jazz Festival Location (Milo Bail Student Center)
-  - Closed due to construction

UNIVERSITY OF NEBRASKA OMAHA
Dodge Campus

UNIVERSITY OF
Nebraska
Omaha
FACILITIES MANAGEMENT & PLANNING
801 Dodge Street - R41438
Omaha, NE 68182-0278
402.694.2933 Fax 402.694.2337



Use University Drive North (UDN) to Lot E, to drop off at clocktower.

To Baxter Arena for Bus Parking.

To Baxter Arena

DODGE CAMPUS
PROJECT NOV. AUGUST 2016

D-1
DATE: 10/7/16
REV: