

**ATTENTION:**  
**ATC IS NOT RESPONSIBLE FOR CLEARANCE OF VEHICLE UNTIL CUSTOMER/DEALER COMPLETES VEHICLE CLEARANCE FORM AND IS VERIFIED BY ATC ENGINEERING DEPARTMENT.**

**DIMENSIONS ARE NOMINAL. STRUCTURAL MEMBERS OFTEN DICTATE WHERE INTERIOR FEATURES CAN BE PLACED. CONSEQUENTLY, SOME DIMENSIONED ITEMS RETAIN A +/- 2" TOLERANCE. CRITICAL (BUBBLED) DIMENSIONS WILL RETAIN A TOLERANCE OF +/- 1/4".**

**NOTES:**  
**1. SQUARE NOSE GOOSENECKS NOT RECOMMENDED WITH SHORT BED TRUCKS**

BOM TABLE				
ITEM NO	PART NO	FILE NAME	DESCRIPTION	QTY
1		0036668 - COVER, HYDRAULIC JACK, .063 MILL, 12.00 X 16.00 X 9.00	COVER, HYDRAULIC JACK, .063 MILL, 12.00 X 16.00 X 9.00	2
2		0036901 - Shade - Roll Up - Night - 50 x 34 - Black Rail, Black Shade - with 1in Bracket	Shade - Roll Up - Night - 50 x 34 - Black Rail, Black Shade - with 1in Bracket	2
3		AC LG COMPRESSOR	2 TON	1
4		AC LG EVAPORATOR	9K WALL MOUNT	3
5		AIRCONDITIONER	13,500 BTU - LOW PROFILE - 10.5 HEAT PUMP	1
7		AWNING	17' LCI POWER	2
8	0014991	AXLE - TORSION-SIMPLIFIED	7000#, HF-93 OB-78, 22.5° Up	3
9	13580	BOGEY WHEEL	BOGEY WHEEL	2
10		CABINET, DRAWER INSERT		1
11		CABINET, DRAWER INSERT		1
12		COUPLER, GOOSENECK	25,000#	1
13		COVER, WATER FILL		1
14		FILL, WATER	Gravity Only	1
15		FILL, WATER	CITY FILL - WHITE	1
16		FUEL FILL		1
17		GENERATOR	10.0 KW ONAN DIESEL	1
18		GRAB HANDLE-FOLDING		1
19		JACK, HYDRAULIC - LEVELING SYS	24" STROKE	2
20		JACK, HYDRAULIC - LEVELING SYS	EQUALIZER 20K	2
21		JACKS (LANDING GEAR), GN	MANUAL, 24,000# RATING/PR	1
22		LIGHT, CEILING - SURFACE MOUNT	LIGHT, CEILING, LED, SURFACE MOUNT	16
23		LIGHT, LED CLEARANCE	AMBER LENS	10
24		LIGHT, LED CLEARANCE	RED LENS	9
25		LIGHT, LICENSE PLATE	LP-31CB	1
26		LIGHT, SLIM LINE	Back-up light	2
27		LIGHT, SLIM LINE	Brake light	4
28		SINK, OVAL SST 13.25 x 10.5 x 5	SINK, OVAL SST, 13.25 x 10.50 x 5.00	3
29		TANK, FUEL	28 GAL TOP FILL (ST24-2)D	1
30		TANK, WASTE	Tank, Waste Water, 45.0 Gal	3
31	138609	TANK, WATER	100 GAL	1
32		TIRES	235/80R16	6
33		TURN SIGNAL		2
34		VENT, ROOF	MAXXFAN DELUXE	4
35		WHEEL WELL - AL	8.5 x 12.0 x 124.0	2
36		WINDOW	18" x 24"	1
37		WINDOW - ARV	48 x 32 - Frameless - Dual Pane	2

REVISION TABLE			
REV.	DESCRIPTION	DATE	DONE BY
A	UPDATE MODEL FOR CUSTOMER	2/28/2025	BR
B	INCREASE OVERALL LENGTH BY 24", CHANGE GENERATOR, ADD SINKS, ADD VENTS, ADD A/C, ADD LIGHTS, ADJUST PARTITION WALLS	9/16/2025	BR
C	INCREASE LENGTH BY 2', ADJUST PARTITION WALLS, ADD WINDOW TO INTERIOR DOOR, ADJUST CABINETS, MOVE WINDOWS TO C/S	11/14/2025	BR

FOR FRAME	DIMENSION TOLERANCES	ALL DIMENSIONS ARE NOMINAL UNLESS CRITICAL DIMENSIONS ARE SPECIFICALLY NOTED
EXTERIOR	STANDARD	
INTERIOR	+ 1/16", 1.0"	
STRUCTURAL	CRITICAL	+ 1/32", 0.5"

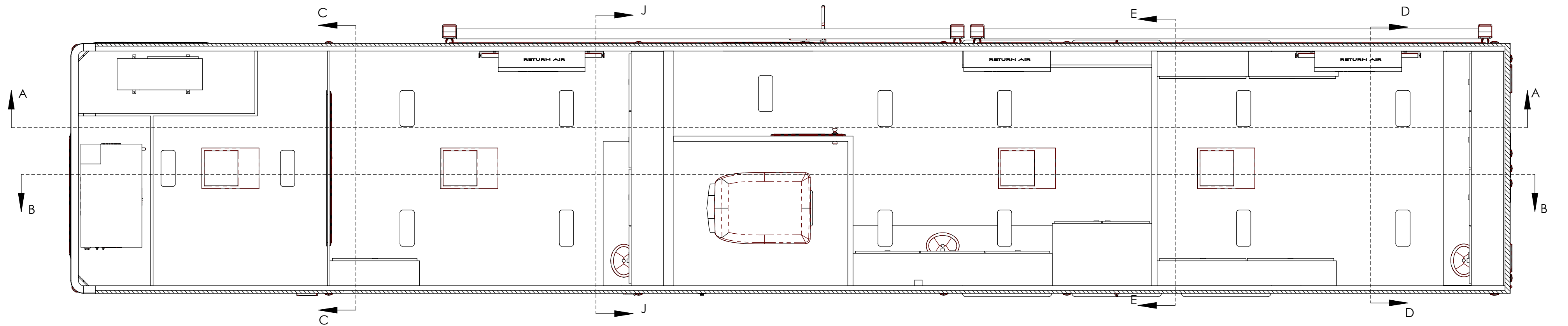
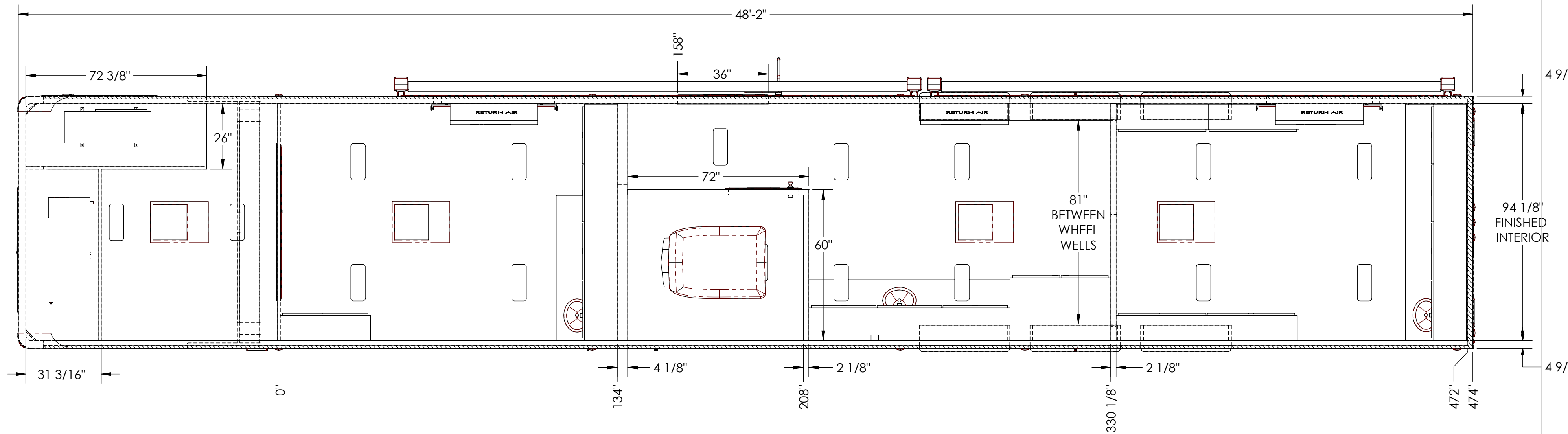
TITLE: PR300\_G85804800+0-3T7.0K-  
MATERIAL: (THICKNESS - TYPE - ALLOY - SIZE)

WEIGHT: LBS



PROPRIETARY AND CONFIDENTIAL: THE INFORMATION CONTAINED IN THIS DRAWING IS THE SOLE PROPERTY OF ATC TRAILERS. ANY REPRODUCTION IN PART OR AS A WHOLE WITHOUT THE WRITTEN PERMISSION OF ATC TRAILERS IS PROHIBITED.

ACUMATICA PN: OPP0001801  
DRAWN BY: BR  
REVISION: C  
DATE: 02/19/25  
SCALE: 1:30



FOR FRAME	DIMENSION TOLERANCES	ALL DIMENSIONS ARE NOMINAL UNLESS CRITICAL DIMENSIONS ARE SPECIFICALLY NOTED
EXTERIOR	STANDARD	
INTERIOR	CRITICAL	
STRUCTURAL		

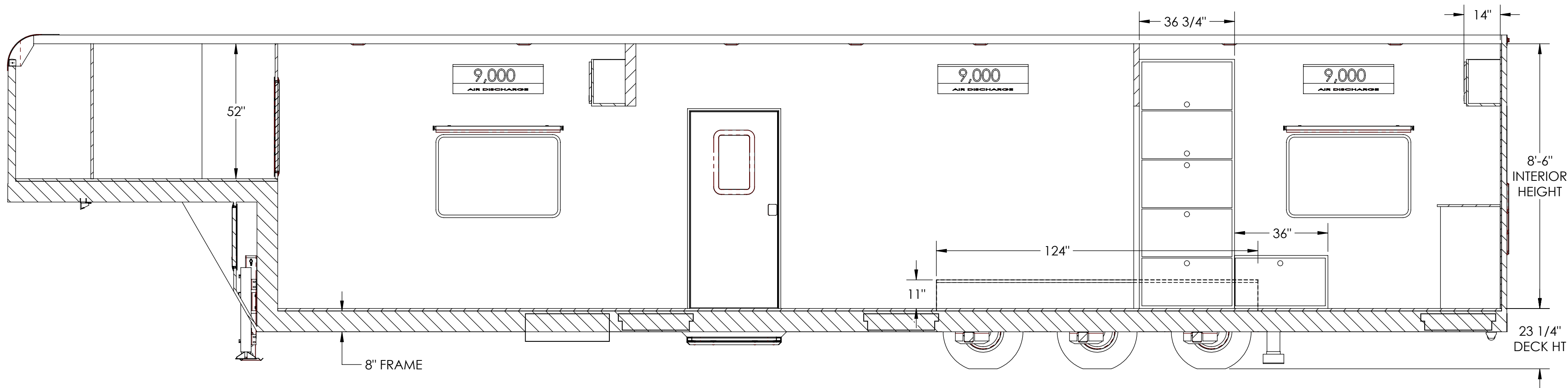
TITLE: PR300 G85804800+0-3T7.0K-  
MATERIAL: (THICKNESS - TYPE - ALLOY - SIZE)

WEIGHT: LBS

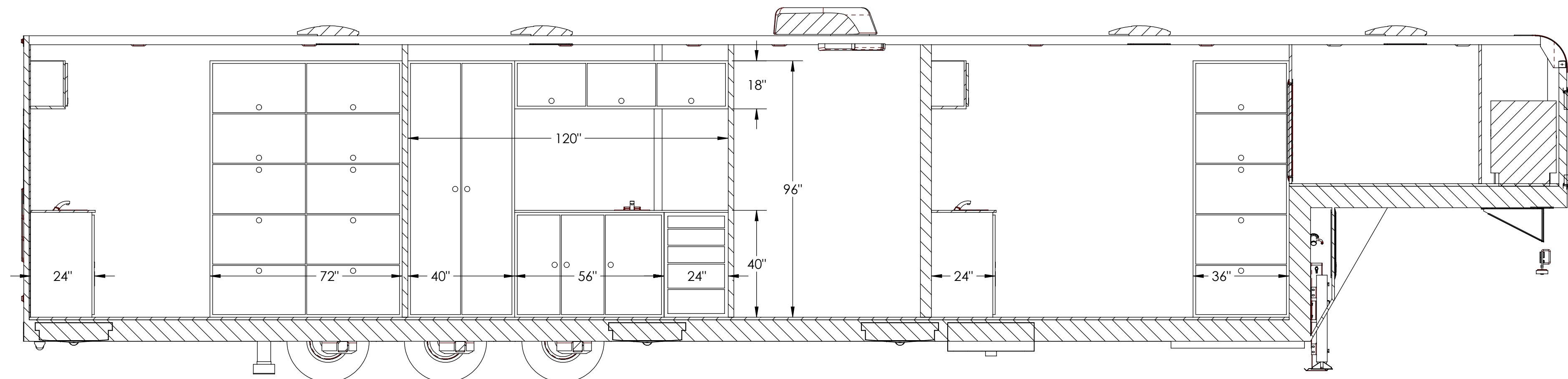


PROPRIETARY AND CONFIDENTIAL: THE INFORMATION CONTAINED IN THIS DRAWING IS THE SOLE PROPERTY OF ATC TRAILERS. ANY REPRODUCTION IN PART OR AS A WHOLE WITHOUT THE WRITTEN PERMISSION OF ATC TRAILERS IS PROHIBITED.

ACUMATICA PN: **OPP0001801**  
DRAWN BY: REVISION: **BR C**  
DATE: **02/19/25**  
SCALE: 1:30  
SHEET 2 OF 6



**INTERIOR CURB SIDE**



**INTERIOR ROAD SIDE**

FOR FRAME	DIMENSION TOLERANCES
EXTERIOR	STANDARD
INTERIOR	CRITICAL
STRUCTURAL	

+ 1/16 " , 1.0 °
+ 1/32 " , 0.5 °

ALL DIMENSIONS ARE NOMINAL UNLESS CRITICAL DIMENSIONS ARE SPECIFICALLY NOTED

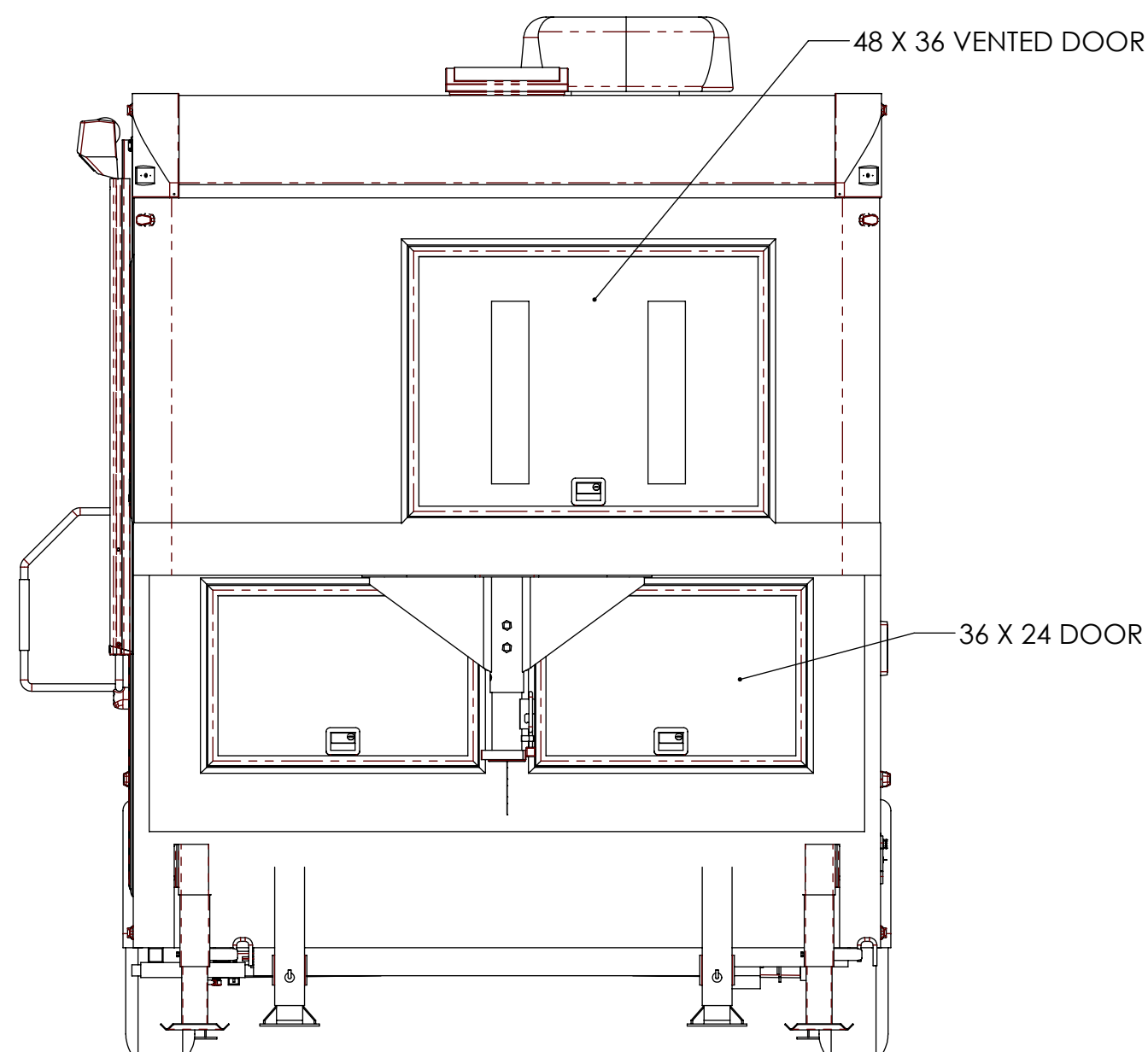
TITLE: PR300 G85804800+0-3T7.0K-  
MATERIAL: (THICKNESS - TYPE - ALLOY - SIZE)

WEIGHT: LBS

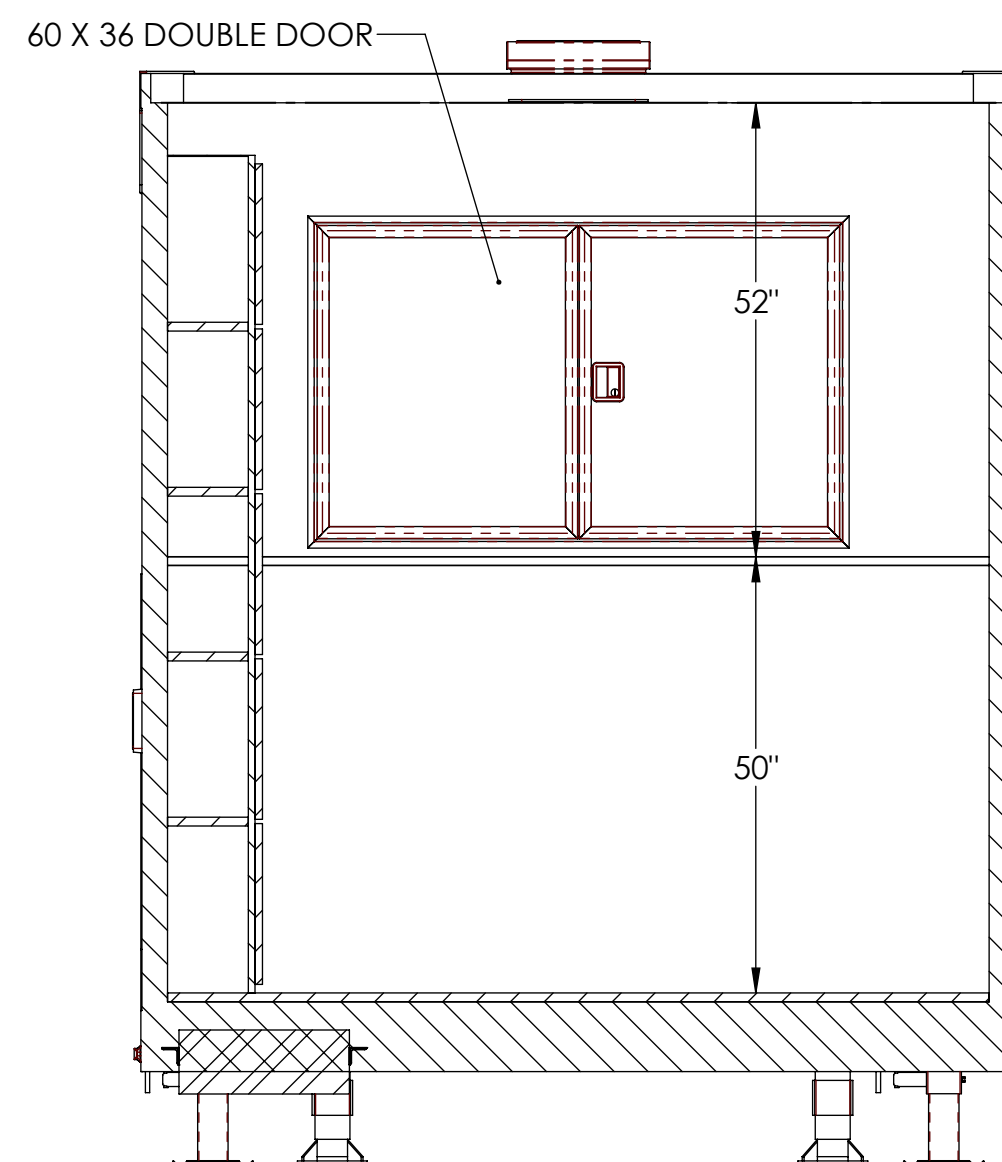


PROPRIETARY AND CONFIDENTIAL: THE INFORMATION CONTAINED IN THIS DRAWING IS THE SOLE PROPERTY OF ATC TRAILERS. ANY REPRODUCTION IN PART OR AS A WHOLE WITHOUT THE WRITTEN PERMISSION OF ATC TRAILERS IS PROHIBITED.

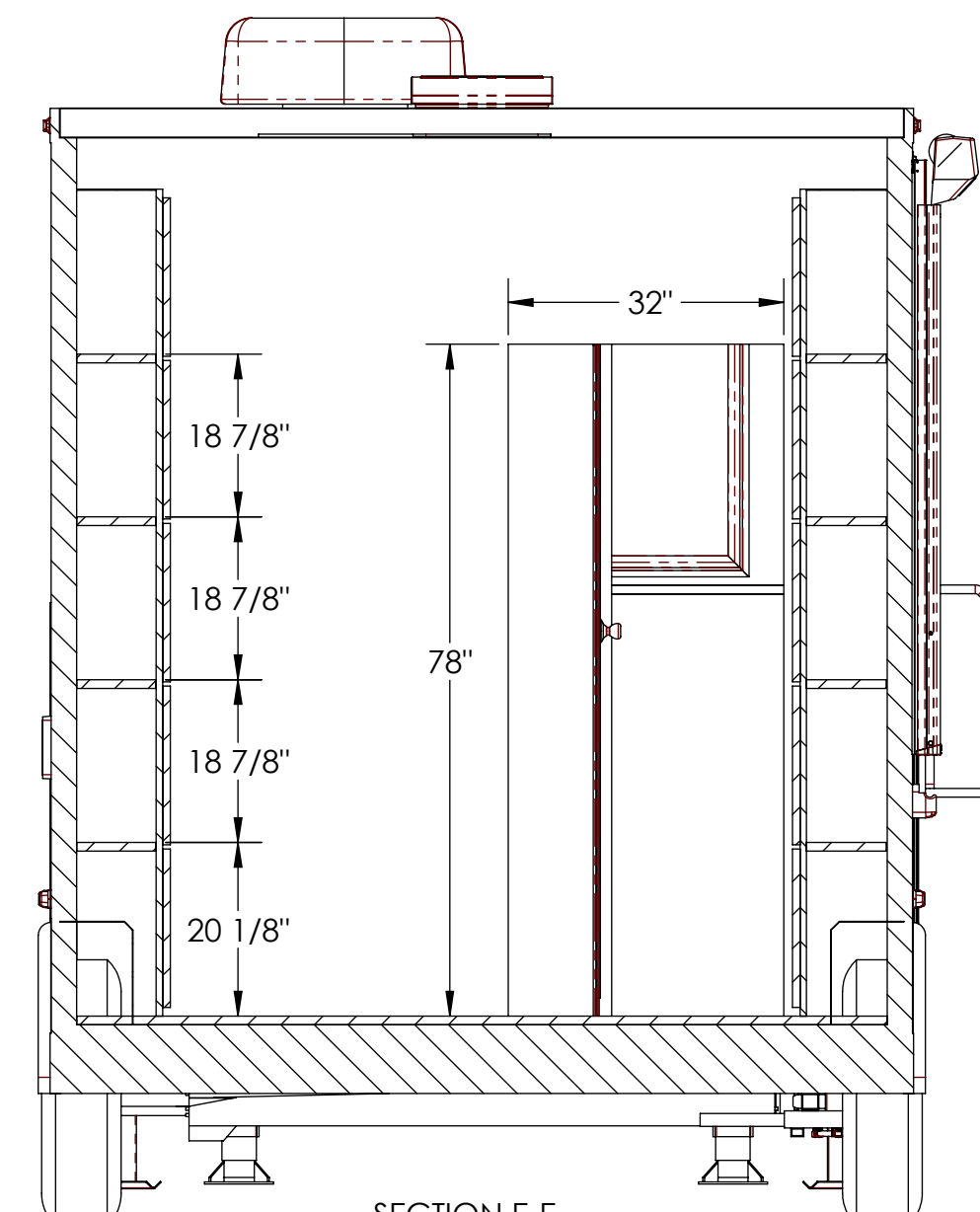
ACUMATICA PN: **OPP0001801**  
DRAWN BY: BR  
REVISION: C  
DATE: 02/19/25  
SCALE: 1:30  
SHEET 3 OF 6



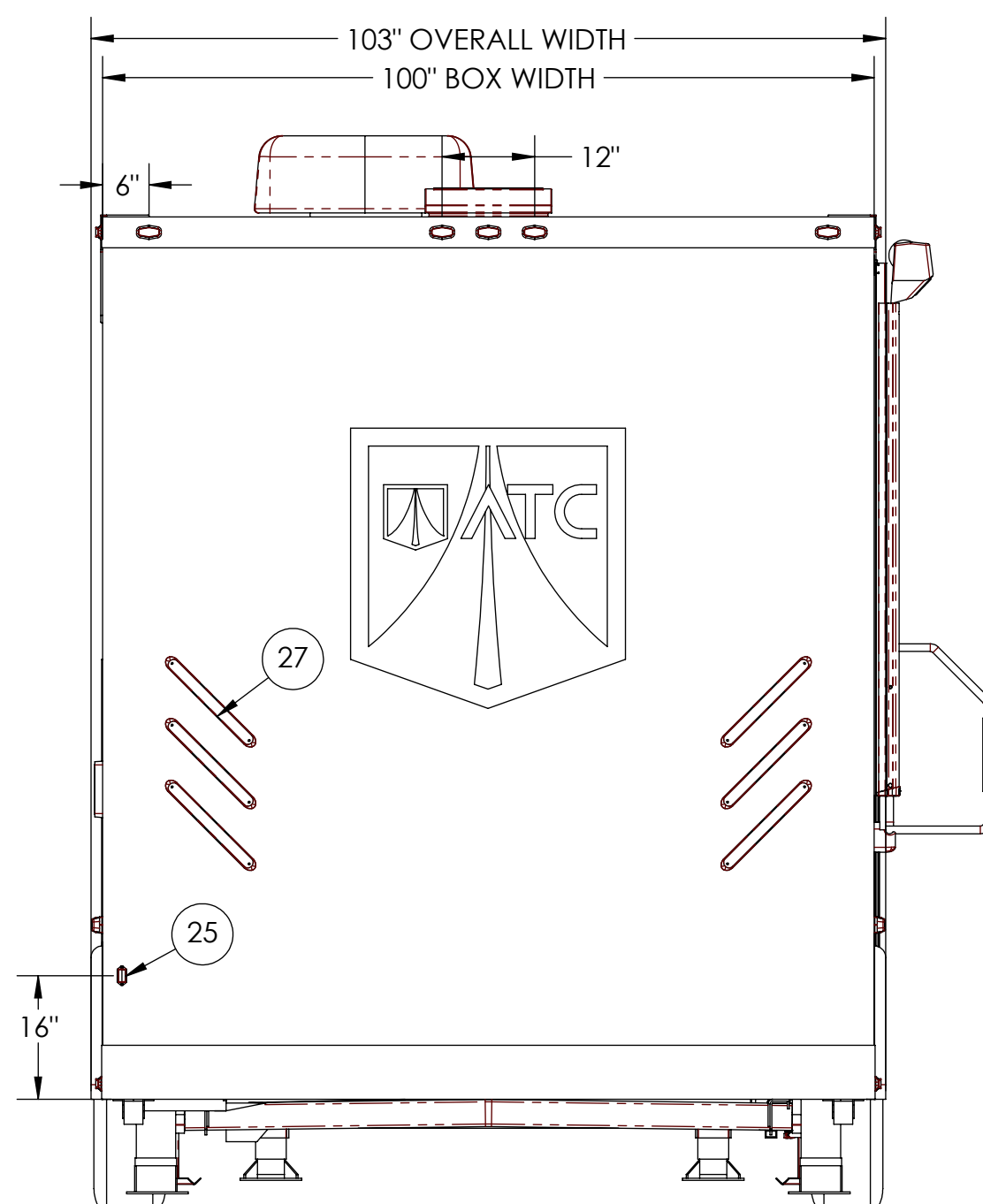
**EXTERIOR FRONT**



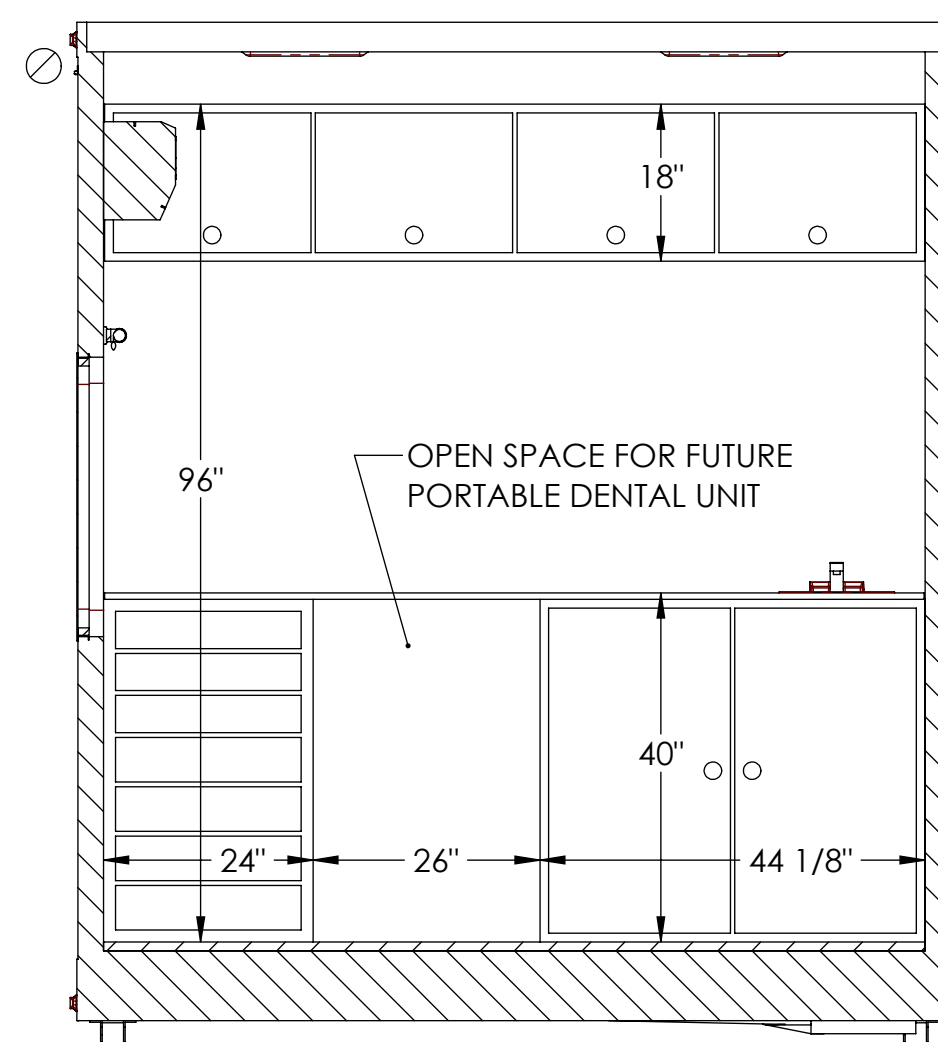
**INTERIOR FRONT**



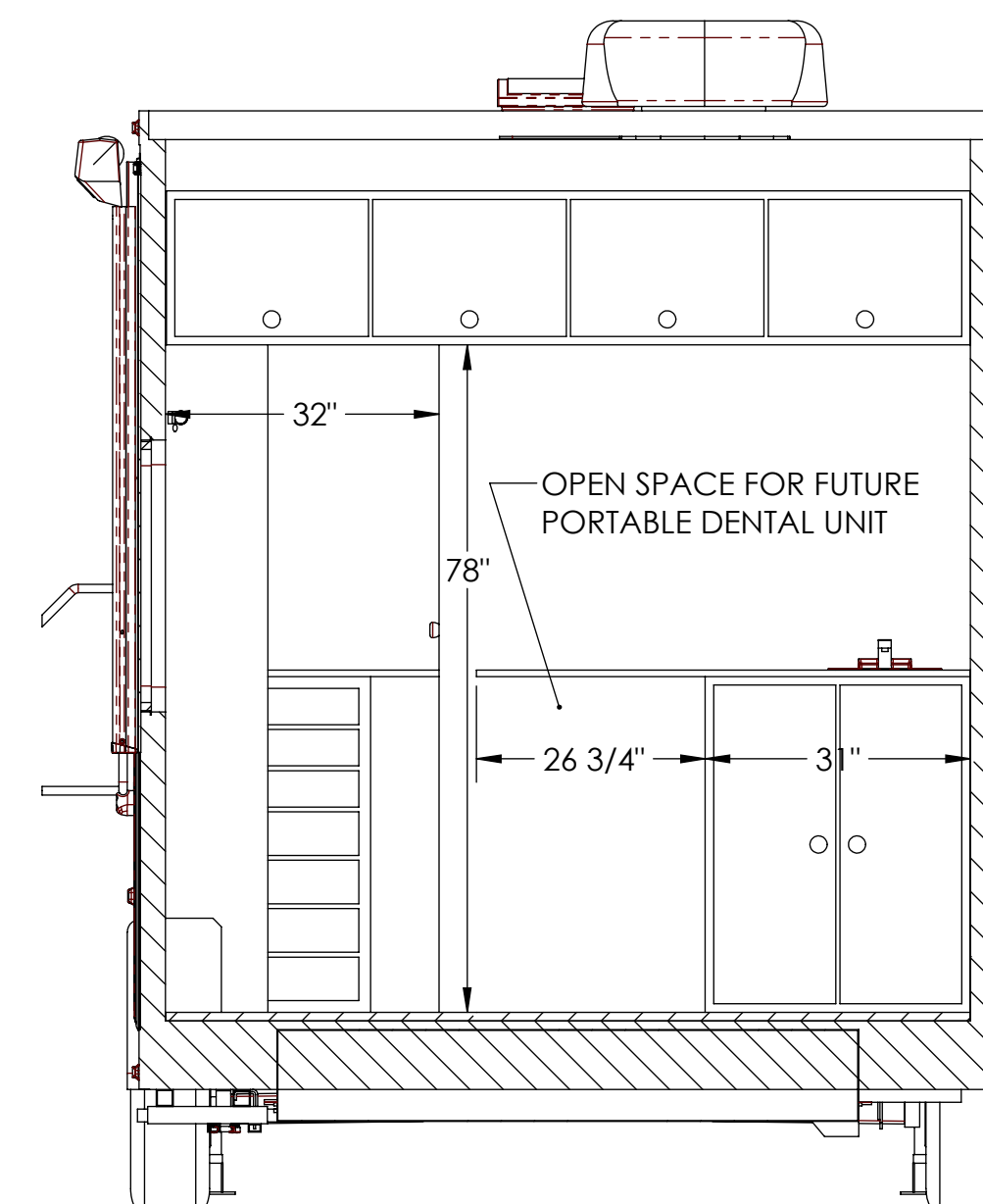
SECTION E-E  
SCALE 1 : 22



**EXTERIOR REAR**



**INTERIOR REAR**



SECTION J-J  
SCALE 1 : 22

**ALL LOCATIONS ARE NOMINAL UNLESS CRITICAL DIMENSIONS ARE SPECIFICALLY NOTED**

PROPRIETARY AND CONFIDENTIAL:  
THE INFORMATION CONTAINED IN THIS DRAWING IS THE SOLE  
PROPERTY OF THE ALUMINUM TRAILER COMPANY. ANY  
REPRODUCTION IN PART OR AS A WHOLE WITHOUT THE WRITTEN  
PERMISSION OF THE ALUMINUM TRAILER COMPANY IS PROHIBITED.



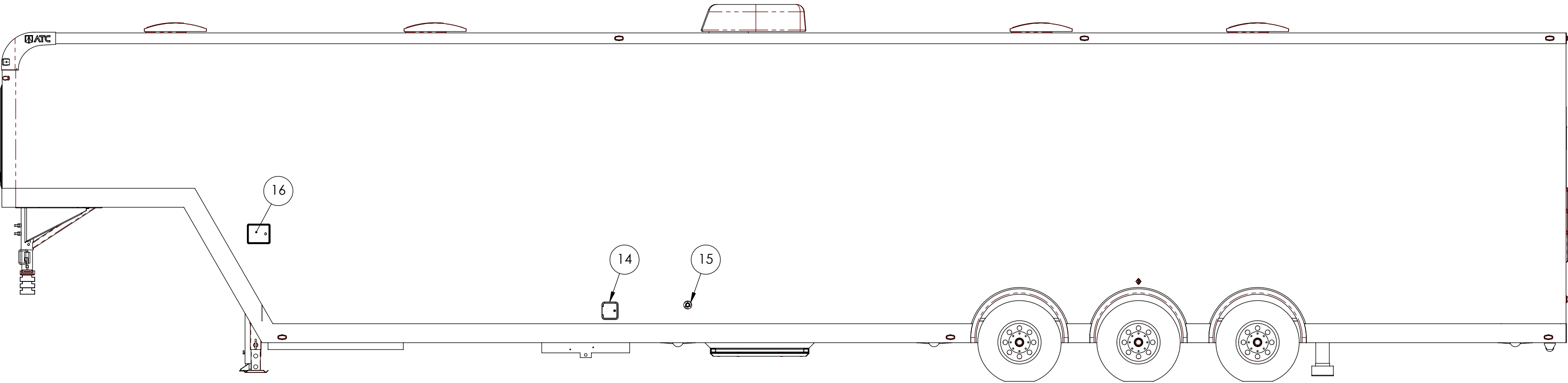
TITLE:  
PR300\_G85804800+0-3T7.0K-\_\_\_

DRAWN BY: BR DATE: 02/19/25 VIN/PART # REV. C

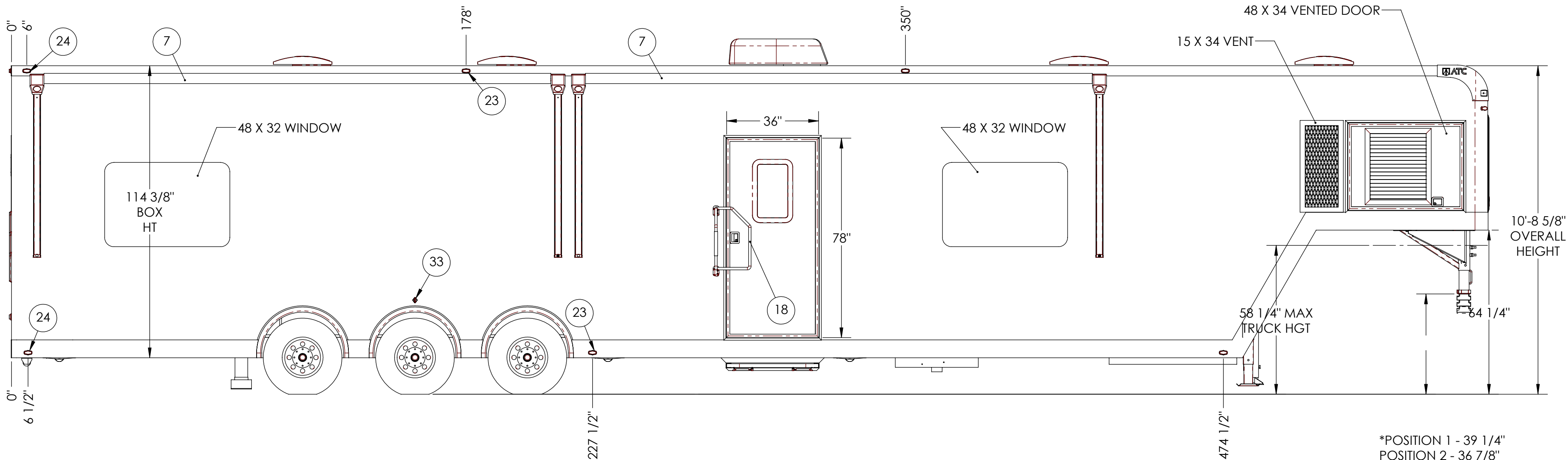
FILE NAME: OPP0001801 - PRD

SCALE:1:29 DATE PRINTED: 11/14/2025 SHEET 4 OF 6

ATTENTION:  
ATC IS NOT RESPONSIBLE FOR  
HIGHER THAN DESIRED TONGUE  
WEIGHTS OF TRAILERS DUE TO OPTIONS  
ON/NEAR TONGUE OF TRAILER

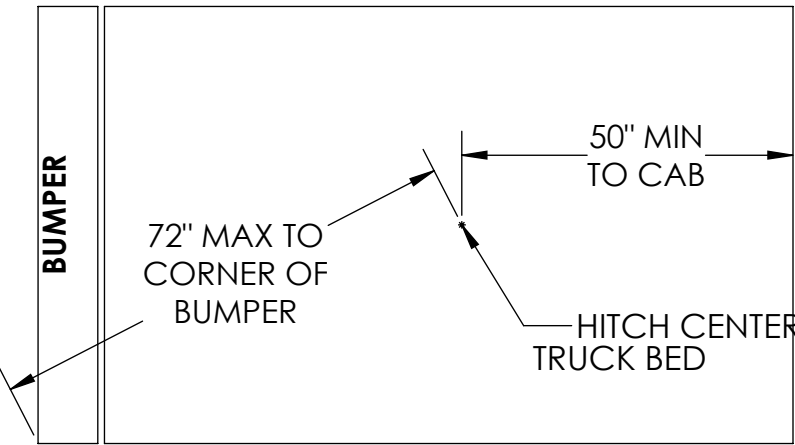


**EXTERIOR ROADSIDE**



\*POSITION 1 - 39 1/4"  
POSITION 2 - 36 7/8"  
POSITION 3 - 34 1/4"  
POSITION 4 - 31 5/8"

**EXTERIOR CURB SIDE**



ATTENTION:  
PLEASE REVIEW THE SPECIFIC GOOSENECK PIN DIMENSIONS AND TOW  
VEHICLE CLEARANCES. YOUR SIGNATURE OF THIS PRINT INDICATES YOUR  
ACCEPTANCE OF THESE DIMENSIONS.

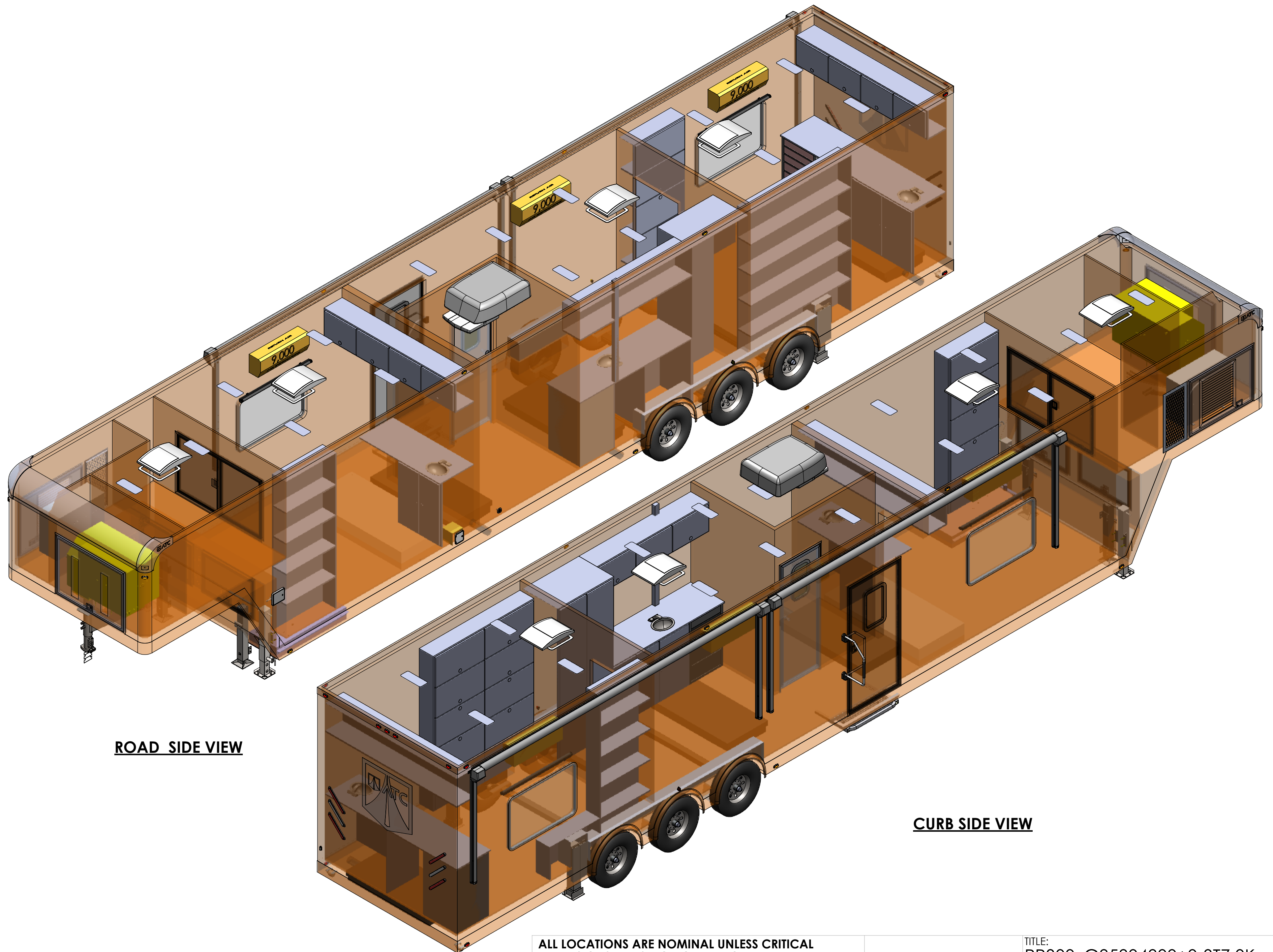
**ALL LOCATIONS ARE NOMINAL UNLESS CRITICAL  
DIMENSIONS ARE SPECIFICALLY NOTED**

PROPRIETARY AND CONFIDENTIAL:  
THE INFORMATION CONTAINED IN THIS DRAWING IS THE SOLE  
PROPERTY OF THE ALUMINUM TRAILER COMPANY. ANY  
REPRODUCTION IN PART OR AS A WHOLE WITHOUT THE WRITTEN  
PERMISSION OF THE ALUMINUM TRAILER COMPANY IS PROHIBITED.



TITLE: PR300_G85804800+0-3T7.0K-__			
DRAWN BY: BR	DATE: 02/19/25	VIN/PART #	REV. C
FILE NAME: OPP0001801 - PRD			
SCALE:1:29	DATE PRINTED: 11/14/2025	SHEET 5 OF 6	





**ROAD SIDE VIEW**

**CURB SIDE VIEW**

**ALL LOCATIONS ARE NOMINAL UNLESS CRITICAL  
DIMENSIONS ARE SPECIFICALLY NOTED**

PROPRIETARY AND CONFIDENTIAL:  
THE INFORMATION CONTAINED IN THIS DRAWING IS THE SOLE  
PROPERTY OF THE ALUMINUM TRAILER COMPANY. ANY  
REPRODUCTION IN PART OR AS A WHOLE WITHOUT THE WRITTEN  
PERMISSION OF THE ALUMINUM TRAILER COMPANY IS PROHIBITED.



TITLE: PR300_G85804800+0-3T7.0K-___			
DRAWN BY: BR	DATE: 02/19/25	VIN/PART #	REV. C
FILE NAME: OPP0001801 - PRD			
SCALE:1:32	DATE PRINTED: 11/14/2025	SHEET 6 OF 6	