



11-Day Japan – Spring Flowers
March 6th - 17th, 2027

Balcony Stateroom: From \$3557 CAD
Mini Suite: From \$4668 CAD

Per person based on double occupancy
Taxes included

A Network Travel Escorted Tour

Highlights

Join Network Travel for an unforgettable 11-day roundtrip voyage from Tokyo aboard the *Sapphire Princess*, timed perfectly for the beginning of Japan's breathtaking cherry blossom season in the south. Your journey begins in Tokyo before sailing to Toba, home of Mikimoto Pearl Island and the sacred Ise Grand Shrine, and Kochi, with its historic castle and bustling markets. After a relaxing day at sea, discover Busan, South Korea, where colorful temples, vibrant shopping, and world-famous seafood create a fascinating cultural blend. Returning to Japan, you'll explore Nagasaki's moving peace monuments and unique East-West heritage, followed by Kagoshima, framed by the dramatic Sakurajima volcano. In Matsuyama, soak in the timeless charm of Dogo Onsen, Japan's oldest hot spring, and take in the views from its hilltop castle. Sail on to Miyazaki, with its striking coastlines and sacred shrines, before reaching Kobe, where a late evening stay allows ample time to experience Kyoto's golden temples, Nara's friendly deer, and the world-renowned flavors of Kobe beef.

Please Note: The timing of the cherry blossom season may vary each year depending on weather conditions and whether spring arrives early or late.

Stateroom Categories, Pricing & Deposits:

Pricing is in Canadian dollars, including taxes. Based on double occupancy and availability. Please request other stateroom categories – A deposit is required to confirm your stateroom. International flights & insurance are not included.



Sapphire Princess

As you set your sights on the wonders of the world, let Sapphire Princess indulge your every whim. Over 700 balconies, world-class gourmet dining and dazzling entertainment options are just the beginning of your sea-going adventure. **Guests:** 2680

Inaugural date: May 16, 2004. **Refurbished date:** March 18, 2018

Itinerary

Tokyo, Japan

Saturday, March 6, 2027

Departs at 3:00 PM

Contemporary Tokyo may be the most astonishing city on earth. It's a paradoxical mix of ancient tradition and postmodern culture. The Ginza, an international shopping mecca, stands near the serene grounds of the Imperial Palace, and the hyper-speed of 21st century consumerism is mysteriously reconciled with the elegance and serenity of traditional culture. Tokyo provides the traveler with a dizzying experience.



Toba, Japan

Sunday, March 7, 2027

7:00 AM - 4:00 PM

Toba, located at the northeastern end of the Shima-hanto Peninsula in Mie, flourished as the castle town of the Kuki family who ruled this region from the 16th century. It was also a landing spot for visitors on the sea route to Ise-jingu Shrine and belongs to Ise-Shima National Park.



Kochi, Japan

Monday, March 8, 2027

9:00 AM - 5:00 PM

Kochi sits on the broad alluvial plain facing Urado Bay. This city in Shikoku takes its name from the great feudal castle that sits at its very heart. Completed in 1611, Kochi Castle was the seat of Yamauchi Kazutoyo, a noted warrior who supported Tokugawa Ieyasu in his successful quest to become Shogun. Tosa Province and Kochi Castle were Yamauchi's reward for faithful service. There is a historical irony here: 250 years later, a Kochi native son - a former low-ranked samurai and now ronin named Sakamoto Ryoma - played a pivotal role in bringing the Tokugawa Shogunate to an end and restoring the Emperor of Japan to political prominence. The prize once awarded for faithful service had become a hotbed of support for the Meiji Restoration. Kochi is one of the wettest places in Japan - and a frequent target for cyclonic storms or typhoons. Southeast of the city, warm oceans currents washing against the Aki Mountains create a subtropical landscape of hibiscus, palm and ficus at Muroto-Anan Quasi-National Park.



At Sea

Monday, March 9, 2027

With an atmosphere of comfortable elegance, tantalizing dining options and dazzling entertainment, your stay on board Grand Princess will be anything but ordinary. Enjoy Movies Under the Stars® poolside or dine on tantalizing cuisine at venues like Crown Grill and more.

Busan, South Korea

Wednesday, March 10, 2027

7:00 AM - 4:00 PM

The second largest city in South Korea, Busan, is your gateway to a fascinating land whose culture is a unique amalgam of old and new. Modern high-rise towers dwarf ancient Buddhist temples. The city's bustling business district offers a stark contrast to the serene grounds of Yongdusan Park. In short, Busan is a microcosm of South Korea, a nation whose startling economic success often obscures one of Asia's most sophisticated and venerable cultures. Busan was the scene of bitter fighting during the Korean War. The United Nations Memorial Cemetery marks the final resting place for the troops from 16 nations who gave their lives during the conflict.



Nagasaki, Japan

Thursday, March 11, 2027

7:00 AM - 4:00 PM

For most travelers, Nagasaki is a symbol of the horror and the inhumanity of war. An estimated 75,000 people perished in 1945 when the city became the second target of a nuclear attack. Today, Nagasaki's Peace Park and Atomic Bomb Museum draw visitors from around the world. But this beautiful city on Kyushu offers other sights. Often described as the San Francisco of Japan, the city occupies verdant hills surrounded by a deep-water bay. For three centuries, Nagasaki was Japan's sole window on the world. The city is also celebrated as the setting for Puccini's opera "Madame Butterfly."



Kagoshima, Japan

Friday, March 12, 2027

7:00 AM - 4:00 PM

From the 12th century to the Meiji Restoration of 1868, Kagoshima was the chief stronghold of the mighty Shimazu clan. The city lies at the top of the Satsuma Peninsula, a mountainous, geothermal wonderland of hot springs and geysers. The area is also rich in modern Japanese history: Saigo Takamori and the Satsuma samurai were leaders of the Meiji Restoration that toppled the shogun and restored the Emperor to power in 1868. In 1877, dissatisfied with the direction of the new government, Saigo led the Satsuma Rebellion, which ended in his death and the final defeat of the samurai. The symbol of Kagoshima is Sakura Jima - the volcanic island that sits just offshore. The volcano has erupted over 30 times in recorded history.



Matsuyama, Japan

Saturday, March 13, 2027

10:00 AM - 7:00 PM

Matsuyama, Japan, is a peaceful haven where you can indulge in the healing waters of hot springs, satisfy your sweet tooth with amazing Japanese confections, and discover the area's rich literary tradition. The largest city on the island of Shikoku, Matsuyama developed around its celebrated 17th-century castle. Lined with cherry trees, this extensive fortress is a museum of historic relics from weaponry to armor, calligraphy and art. It also offers phenomenal views of the city and the Seto Inland Sea from its hilltop perch. Another city hotspot is Dogo



Onsen, Japan's oldest hot springs. Known throughout Japan as a popular setting in the late author Natsume Soseki's famed novel, Botchan, Dogo Onsen features an elegant and inviting public bathhouse where many a visitor renews their spirit. Matsuyama is also the birthplace of Masaoka Shiki, considered the "Father of Modern Japanese Haiku Poetry," and there are several monuments to the haiku located throughout the city. From the hospitality at the hot springs to the renowned

Matsuyama tarts and botchan dango (rice dumplings in bean paste), you won't want to leave this port!

Miyazaki (aburatsu), Japan

Sunday, March 14, 2027

7:00 AM - 4:00 PM

Boasting the second warmest temperatures in Japan, Miyazaki offers a playground of outdoor activities that take full advantage of its balmy breezes and aquamarine waters. A resort atmosphere permeates Miyazaki, fragrant by blooms from local botanical gardens. Emerald green golf courses, some of the best surfing in Japan, and a zoo with the largest number of



flamingos in captivity in all of Japan add to the festive atmosphere. A Peace Tower, built with stones from throughout Asia anchors the city and Heiwadai Park and is one of the most noted landmarks. Visit Haniwa Gardens where over 400 replica haniwa (burial statues) make for wonderful photo opportunities, and see Miyazaki's history and culture on display at The Miyazaki Prefectural Museum of Nature and History, located on the same grounds as the picturesque Miyazaki Shrine. For a change of pace, stop into the Miyazaki Science Center where an animatronics "Dr. Cosmo" welcomes you to this hands-on museum. Looking for a little adventure? Try a side trip to Aoshima, a small island just off the coast of Miyazaki City, and enjoy the charming Aoshima Shrine and over 400 species of subtropical plants. The options are endless in Miyazaki to soak up local color...or just soak up the sun!

Kobe (for Kyoto), Japan

Monday, March 15, 2027

9:00 AM - 11:00 PM

Kobe is the fifth-largest city in Japan and is the capital city of Hyogo Prefecture on the southern side of the



main island of Honshu. Its name comes from "kanbe", an archaic title for supporters of the city's Ikuta Shrine. With a population of about 1.5 million, the city is part of the Keihanshin (Keihanshin) metropolitan area along with Osaka and Kyoto. The earliest written records regarding the region come from the Nihon Shoki, which describes the founding of the Ikuta Shrine by Empress Jingu in AD 201. For most of its history the area was never a single political entity, even during the Tokugawa Period, when the port was controlled directly by the

Tokugawa Shogunate. Kobe did not exist in its current form until its founding in 1889. Kobe was one of the cities to open for trade with the West following the end of the policy of seclusion and has since been known as a cosmopolitan port city. While the 1995 Great Hanshin Earthquake diminished much of Kobe's prominence as a port city, it remains Japan's fourth busiest container port. The city is the point of origin and namesake of Kobe beef as well as the site of one of Japan's most famous hot spring resorts, Arima Onsen. Kobe is also your gateway to Kyoto, Japan's ancient imperial capital and the nation's cultural and spiritual center.

At Sea

Tuesday, March 16, 2027

With an atmosphere of comfortable elegance, tantalizing dining options and dazzling entertainment, your stay on board Grand Princess will be anything but ordinary. Enjoy Movies Under the Stars® poolside or dine on tantalizing cuisine at venues like Crown Grill and more.

Tokyo, Japan

Wednesday, March 17, 2027

Arrival at 6:30 AM

Contemporary Tokyo may be the most astonishing city on earth. It's a paradoxical mix of ancient tradition and postmodern culture. The Ginza, an international shopping mecca, stands near the serene grounds of the Imperial Palace, and the hyper-speed of 21st century consumerism is mysteriously reconciled with the elegance and serenity of traditional culture. Tokyo provides the traveler with a dizzying experience.



Complimentary & Main Dining

Main Dining Rooms (Sit-Down Table Service)

- Elegant, waiter-served meals included in your cruise fare, with menus that change daily and offer varied choices (e.g., vegetarian, gluten-free).
- Multiple rooms with different décor — International, Vivaldi, Savoy, Santa Fe and Pacific Moon, give a relaxed but refined feel.
- You can choose from traditional fixed seating, flexible reservations, or walk-in anytime dining.



Afternoon Tea

- A lovely sea-day tradition served with scones, sandwiches, and desserts, great for a light mid-afternoon treat.

Buffet & Café

- World Fresh Marketplace buffet offers international breakfast, lunch, dinner, and plenty of variety in a casual setting.
- International Café serves pastries, sandwiches, coffee drinks, and snacks throughout the day, ideal for casual bites or a latte break.

Casual & Poolside Eats

- Prego / Alfredo's Pizzeria: Fresh Neapolitan-style pizza (often called some of the best at sea).
- Trident Grill: Burgers, hot dogs, pulled pork, and other grill fare near the pool.
- Swirls Ice Cream Bar: Soft-serve treats for dessert or a sweet break.
- Casual spots are great for quick meals between activities or after lounging by the pool.

Specialty & Premium Dining (Extra Cost or Included with a Package)

Sapphire Princess has enhanced its dining lineup, offering higher-end specialty restaurants for that extra-special night out, reservations usually recommended and often included if you book a Princess Premier or similar package:

- Sabatini's Italian Trattoria – Classic Italian multi-course dinner.
- Crown Grill – Steakhouse with premium cuts and classic sides.
- Makoto Ocean – Japanese sushi & seafood experience.
- Brazilian-style Churrascaria and seasonal Crab Shack pop-ups may also be offered.

Room Service

- Breakfast (and sometimes other meals) can be delivered to your stateroom, a nice start to the day without leaving your cabin.

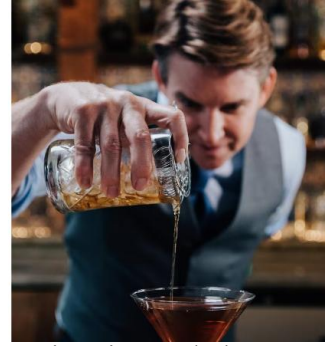
Main Bars & Lounges

Crooners Bar

A classic cocktail lounge with *live piano music* and a vintage, Rat-Pack-style atmosphere, perfect for martinis, classic cocktails, and relaxed pre-dinner drinks.

Vines Wine Bar

Sophisticated wine spot with an extensive global wine list, wine flights, and often complimentary antipasti or tapas with purchases. A mellow place to sip wine and chat.



Wheelhouse Bar

Nautical-themed pub bar with a lively yet relaxed feel, great for beer, cocktails, and spirits with a bit of maritime character and sometimes live music.

Good Spirits at Sea

Contemporary cocktail lounge inspired by the TV series *Good Spirits*, where mixologists craft creative drinks tied to global flavors, fun for trying something new.

Lobby & Promenade Bars

Casual spots near the Piazza and promenade, easy for a quick drink while people-watching, meeting up with friends, or before heading to dinner or a show.

Pool & Outdoor Bars

These bars are perfectly set up for sunny days, swims, and lounging:

Tradewinds, Calypso & Mermaid's Tail Bars

Poolside bars serving summer cocktails, mixed drinks, beer and soft drinks, great for unwinding by the water or during *Movies Under the Stars*.

Oasis & Outrigger Bars

Located aft near hot tubs and terrace pools, offering drinks with ocean views, ideal for lazy afternoons or sunset sips.

Wake View Bar

A scenic aft lounge bar with sweeping ocean views — particularly lovely at sunset or for a quiet drink while watching the ship's wake.

Late Night & Specialty Spots

Grand Casino Bar

Grab a drink between hands or while trying your luck on slots and tables.

Skywalkers Nightclub (Bar area)

For later-night dancing and drinks with a higher-energy crowd.

Churchill's Cigar Lounge

A dedicated cigar and whiskey lounge if you're into spirits paired with a smoke (and some screens for sports

Relaxation & Recreation

- Pools & Hot Tubs – Several freshwater pools including Neptune's Reef & Pool and Calypso Reef Pool plus hot tubs — perfect for lounging, swimming or soaking up sun.
- Fitness & Sports – A well-equipped fitness center, jogging track, and sports court (basketball, volleyball, etc.) help you stay active at sea.
- Lotus Spa® & Wellness – Spa treatments, saunas and relaxation areas if you want pampering and downtime.
- Lawn & Games – Lawn court for putting and classic lawn games adds a playful outdoor option.



Entertainment & Shows

- Princess Theater – Broadway-style stage productions, musicals, magic shows, comedy and variety performances.
- Live Music & Lounges – Piano sing-alongs, jazz nights and performances pop up in lounges like Wheelhouse Bar or Crooners.
- Nightclubs & Dance Spots – Skywalkers Nightclub, Explorer's Lounge and club-style dance floors after dinner.
- Movies Under the Stars® – Outdoor LED screen shows films and entertainment on the pool deck in the evening.

Daytime Activities & Enrichment

- Culinary & Cultural Events – Cooking demos, wine tastings and destination-themed activities tied to places you're visiting.
- Trivia, Dance & Games – Trivia contests, dance classes, pool games and group competitions keep days social.
- Art & Auctions – Browse the art gallery, learn about pieces, and maybe bid at a Champagne art auction.
- Shopping – Duty-free shops with jewelry, perfumes, keepsakes and fashion.

Casino & Social Spots

- Grand Casino – Slots, table games, tournaments and Vegas-style fun.
- The Piazza & Atrium – Central social hub where people gather, listen to music, grab a drink or watch performers.

Main Stage & Live Shows

Princess Theater

- Broadway-style theatrical productions with singers, dancers, and professional performers, big, polished stage shows that run most evenings.
- Variety acts include musicals, themed performances, and sometimes magic or comedy nights.



Live Music & Lounge Acts

- Smaller, intimate performances happen throughout the ship — jazz in lounges, piano nights, live bands in bars and the Piazza.

Movies Under the Stars®

- Outdoor giant LED screen by the pool plays blockbusters, concerts, and even sporting events, often with nightly showings and complimentary popcorn.

Interactive & Casual Entertainment

Princess Live!

- A hybrid café/bar venue with interactive game shows, trivia, talk-show formats, karaoke, and live music throughout the day and evening.

Explorer's Lounge & Club Fusion

- Spaces where comedy acts, karaoke nights, dance classes, and social game shows come alive, great if you're into participatory fun.

Theme Nights & Deck Parties

- Throughout the cruise, expect themed evenings, costume parties, and fun group events tied to seasonal or itinerary-specific themes.

Nightlife & Dancing

Skywalkers Nightclub & Other Lounges

- Late-night spots with DJs or dancing, perfect for post-dinner socializing and letting loose into the wee hours.

Bars with Music

- Many bars offer live piano, acoustic, and lounge music to match the vibe, from mellow to upbeat.

Other Entertainment Elements

Grand Casino & Gaming Events

- Casino gaming tables, slot machines, and scheduled tournaments or lessons add another layer of excitement.

Discovery & Enrichment Programs (varies by sailing)

- Collaboration with Discovery (e.g., stargazing, shark/animal features, themed talks) on select itineraries.

Join the group!

Please contact Jackie Abello – Network Travel

E: JAbello@NetworkTravel.ca

P: 780-454-4933 ext.: 103

NETWORK
Travel.ca

A promotional advertisement for Princess Cruises Japan cruises. The background features a large cruise ship sailing on the water with Mount Fuji in the distance. The text is overlaid on the left side of the image.

Japan
by Princess

JAPAN CRUISES AND CRUISETOURS

**Unlock the
soul of
Japan**

From iconic landmarks to hidden traditions,
Princess Cruises delivers endless discoveries both
onboard and ashore.