

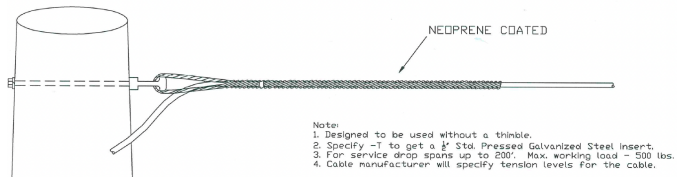


- Dead-ends
- Supports
- Suspension
- Dampers
- Downlead clamp

DEAD-ENDS

DROP CABLE DEAD-END

Heliformed dead-end for ADSS, round profile for drop cable application, up to 200' span, 500 lb maximum working load
Type: **FODC**



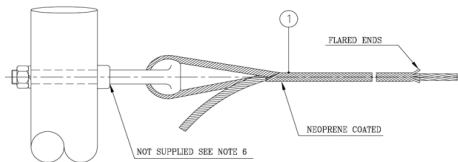
MOSDORFER	Min [in]	Max [in]	Length [in]	Color code	Std pack	Span length [ft]	Working load [lb]	PLP X-Reference (*)
FODC0640	0.251	0.260	18	Red	100	200	500	288811285
FODC0765	0.301	0.310	22	Red	100	200	500	288811337
FODC0890	0.351	0.360	22	Black	100	200	500	288811274
FODC0905	0.361	0.370	22	Black	100	200	500	288811269
FODC0940	0.371	0.380	27	Yellow	100	200	500	288811353
FODC1280	0.504	0.512	34	Red	100	200	500	---

Note: add suffix "T" to include Thimble

LITE TENSION DEA-END

Light tension dead-end for ADSS cable, for short spans (<300'), 800 lb working load.

TYPE: **FOLT**



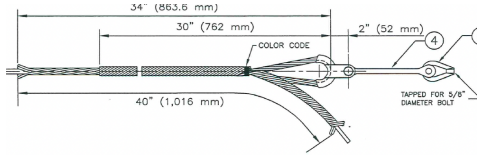
MOSDORFER	Min [in]	Max [in]	Color code	Length [in]	PLP X-Reference
FOLT0700	0.275	0.295	Brown	20	---
FOLT0775	0.296	0.315	Orange	22	---
FOLT0815	0.316	0.325	Red	22	---
FOLT0895	0.351	0.360	Black	24	2875001

Note: add suffix "T" to include Thimble

LIMITED TENSION DEAD-END

Limited tension dead-end for ADSS cable,
2500 lb maximum heavy loading condition.

Type: FDES



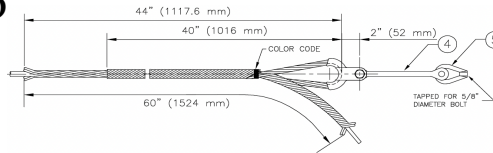
MOSDORFER	Min [in]	Max [in]	Color code	Length [in]	PLP X-Reference (*)
FDES0300	0.300	0.349	Blue	30	---
FDES0350	0.350	0.399	Orange	30	---
FDES0400	0.400	0.449	Green	30	2872001
FDES0450	0.450	0.499	Red	30	2872003
FDES0500	0.500	0.549	Black	30	2872005
FDES0550	0.550	0.599	Yellow	30	2872006
FDES0600	0.600	0.649	Purple	30	2872008
FDES0650	0.650	0.699	Brown	30	2872009
FDES0700	0.700	0.749	Blue	30	2872010
FDES0750	0.750	0.799	Orange	30	2872011
FDES0800	0.800	0.849	Green	30	2872012
FDES0850	0.850	0.899	Red	30	2872013
FDES0900	0.900	0.949	Black	30	2872014
FDES0950	0.950	0.999	Yellow	30	2872015
FDES1000	1.000	1.049	Purple	30	2872016

Note: add "AS01" prefix to include 10" extension link, clevis eye & Oval eye nut.
add "AS02" prefix to include 14" Extension link, clevis eye & Oval eye nut.

MEDIUM TENSION DEAD-END

Medium tension dead-end for ADSS cable,
4000 lb maximum working load.

Type: **FDEM**



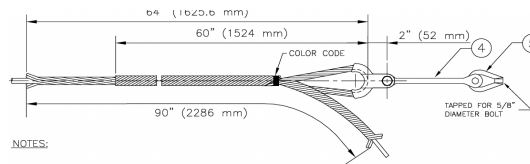
MOSDORFER	Min [in]	Max [in]	Color code	Length [in]	PLP X-Reference (*)
FDES0300	0.300	0.349	Blue	40	---
FDES0350	0.350	0.399	Orange	40	---
FDES0400	0.400	0.449	Green	40	2872098
FDES0450	0.450	0.499	Red	40	2872099
FDES0500	0.500	0.549	Black	40	2872101
FDES0550	0.550	0.599	Yellow	40	2872102
FDES0600	0.600	0.649	Purple	40	2872104
FDES0650	0.650	0.699	Brown	40	2872105
FDES0700	0.700	0.749	Blue	40	2872106
FDES0750	0.750	0.799	Orange	40	2872107
FDES0800	0.800	0.849	Green	40	2872108
FDES0850	0.850	0.899	Red	40	2872109
FDES0900	0.900	0.949	Black	40	2872110
FDES0950	0.950	0.999	Yellow	40	2872111
FDES1000	1.000	1.049	Purple	40	2872112

Note: add "AS01" prefix to include 10" extension link, clevis eye & Oval eye nut.
add "AS02" prefix to include 14" Extension link, clevis eye & Oval eye nut.

HIGH TENSION DEAD-END

High tension dead-end for ADSS cable,
7300 lb maximum working load.

Type: **FDEL**



MOSDORFER	Min [in]	Max [in]	Color code	Length [in]	PLP X-Reference (*)
FDEL0410	0.410	0.434	Orange	60	---
FDEL0435	0.435	0.459	Black	60	---
FDEL0460	0.460	0.484	Yellow	60	---
FDEL0485	0.485	0.509	Brown	60	---
FDEL0510	0.510	0.534	Orange	60	---
FDEL0535	0.535	0.559	Green	60	---
FDEL0560	0.560	0.579	Red	60	---
FDEL0580	0.580	0.600	Black	60	---
FDEL0601	0.601	0.619	Yellow	60	---
FDEL0620	0.620	0.645	Purple	60	---
FDEL0646	0.646	0.670	Brown	60	---
FDEL0671	0.671	0.695	Blue	60	---
FDEL0696	0.696	0.720	Orange	60	---
FDEL0721	0.721	0.745	Green	60	---
FDEL0746	0.746	0.770	Red	60	---
FDEL0771	0.771	0.795	Black	60	---

FDEL0796	0.796	0.820	Yellow	60	---
FDEL0821	0.821	0.845	Purple	60	---
FDEL0846	0.846	0.870	Brown	60	---
FDEL0871	0.871	0.895	Blue	60	---
FDEL0896	0.896	0.920	Orange	60	---
FDEL0921	0.921	0.945	Green	60	---
FDEL0946	0.946	0.970	Red	60	---
FDEL0971	0.971	0.995	Black	60	---
FDEL0996	0.996	1.020	Yellow	60	---
FDEL1021	1.021	1.045	Purple	60	---

Note: add "AS01" prefix to include 10" extension link, clevis eye & Oval eye nut.
 add "AS02" prefix to include 14" Extension link, clevis eye & Oval eye nut.

SUPPORTS

ALUMINUM SUPPORT

Aluminum support clamp for ADSS cable, span < 600 ft.

Type: **FOSC**

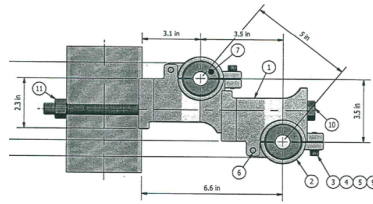


MOSDORFER	Min [in]	Max [in]	Clamp	Insert	PLP X-Reference (*)	PLP X-Reference insert (*)
FOSC0325	0.276	0.325	FOSC0000	FOSC-I-0325	4450096	00070236
FOSC0375	0.326	0.375	FOSC0000	FOSC-I-0375	4450097	00070237
FOSC0425	0.376	0.425	FOSC0000	FOSC-I-0425	4450098	00070238
FOSC0475	0.426	0.475	FOSC0000	FOSC-I-0475	4450099	00070239
FOSC0525	0.476	0.525	FOSC0000	FOSC-I-0525	4450100	00070125
FOSC0575	0.526	0.575	FOSC0000	FOSC-I-0575	4450101	00070126
FOSC0625	0.576	0.625	FOSC0000	FOSC-I-0625	4450102	00070127
FOSC0675	0.626	0.675	FOSC0000	FOSC-I-0675	4450103	00070128
FOSC0725	0.676	0.725	FOSC0000	FOSC-I-0725	4450104	00070129
FOSC0775	0.726	0.775	FOSC0000	FOSC-I-0775	4450105	00070130
FOSC0825	0.776	0.825	FOSC0000	FOSC-I-0825	4450105	00070130
FOSC0875	0.826	0.875	FOSC0000	FOSC-I-0875	4450106	00070131
FOSC0925	0.876	0.925	FOSC0000	FOSC-I-0925	4450106	00070131
FOSC0975	0.926	0.975	FOSC0000	FOSC-I-0975	4450107	00070132
FOSC1025	0.976	1.025	FOSC0000	FOSC-I-1025	4450108	00070133
FOSC1075	1.026	1.075	FOSC0000	FOSC-I-1075	4450109	00070134
FOSC1125	1.076	1.125	FOSC0000	FOSC-I-1125	4450109	00070134

DOUBLE SUPPORT CLAMP

Double support tangent clamp for ADDS cable, 500 ft span.

Type: **DFOSC**



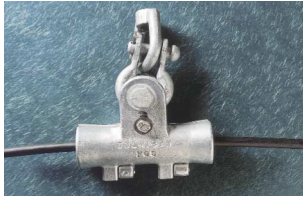
MOSDORFER	Min [in]	Max [in]	Clamp	Insert	PLP X-Reference (*)	PLP X-Reference insert (*)
DFOSC0325	0.276	0.325	FOSC0000	FOSC-I-0325	4450096	00070236
DFOSC0375	0.326	0.375	FOSC0000	FOSC-I-0375	4450097	00070237
DFOSC0425	0.376	0.425	FOSC0000	FOSC-I-0425	4450098	00070238
DFOSC0475	0.426	0.475	FOSC0000	FOSC-I-0475	4450099	00070239
DFOSC0525	0.476	0.525	FOSC0000	FOSC-I-0525	4450100	00070125
DFOSC0575	0.526	0.575	FOSC0000	FOSC-I-0575	4450101	00070126
DFOSC0625	0.576	0.625	FOSC0000	FOSC-I-0625	4450102	00070127
DFOSC0675	0.626	0.675	FOSC0000	FOSC-I-0675	4450103	00070128
DFOSC0725	0.676	0.725	FOSC0000	FOSC-I-0725	4450104	00070129
DFOSC0775	0.726	0.775	FOSC0000	FOSC-I-0775	4450105	00070130
DFOSC0825	0.776	0.825	FOSC0000	FOSC-I-0825	4450105	00070130
DFOSC0875	0.826	0.875	FOSC0000	FOSC-I-0875	4450106	00070131
DFOSC0925	0.876	0.925	FOSC0000	FOSC-I-0925	4450106	00070131
DFOSC0975	0.926	0.975	FOSC0000	FOSC-I-0975	4450107	00070132
DFOSC1025	0.976	1.025	FOSC0000	FOSC-I-1025	4450108	00070133
DFOSC1075	1.026	1.075	FOSC0000	FOSC-I-1075	4450109	00070134
DFOSC1125	1.076	1.125	FOSC0000	FOSC-I-1125	4450109	00070134

SUSPENSION CLAMPS

ALUMINUM SUSPENSION CLAMP

Aluminum suspension clamp for ADSS,
 <600 ft span without armor rods;
 <1200 ft with armor rods.

Type: **FOS**



MOSDORFER	Min [in]	Max [in]	PLP X- Reference w/o AA (*)	PLP X- Reference w/AA (*)	PLP X- Reference Insert (*)
FOS0325	0.276	0.325	4450196	---	00070236
FOS0375	0.326	0.375	4450197	---	00070237
FOS0425	0.376	0.425	4450198	---	00070238
FOS0475	0.426	0.475	4450199	4470199	00070239
FOS0525	0.476	0.525	4450200	4470200	00070125
FOS0575	0.526	0.575	4450201	4470201	00070126
FOS0625	0.576	0.625	4450202	4470202	00070127
FOS0675	0.626	0.675	4450203	4470203	00070128
FOS0725	0.676	0.725	4450204	4470204	00070129
FOS0775	0.726	0.775	4450205	4470205	00070130
FOS0825	0.776	0.825	4450205	4470205	00070130
FOS0875	0.826	0.875	4450206	4470206	00070131
FOS0925	0.876	0.925	4450206	4470207	00070131
FOS0975	0.926	0.975	4450207	4470208	00070132
FOS1025	0.976	1.025	4450208	4470208	00070133
FOS1075	1.026	1.075	4450208	4470209	00070133
FOS1125	1.076	1.125	4450209	4470209	00070134

Note: add "AS03" prefix to include Anchor shakle & 5/8" oval eye nut.

HELICAL SUSPENSION UNIT

Helical suspension unit for ADSS cable,

Type: **FOHSU**



MOSDORFER	Min [in]	Max [in]	LENGTH [in]	COLOR CODE
FOHSU0304	0.304	0.315	26	Brown
FOHSU0316	0.316	0.327	26	Red
FOHSU0328	0.328	0.342	26	Orange
FOHSU0343	0.343	0.355	26	Black
FOHSU0356	0.356	0.374	26	Green
FOHSU0375	0.375	0.389	26	Purple
FOHSU0390	0.390	0.404	36	Yellow
FOHSU0405	0.405	0.418	36	Brown
FOHSU0419	0.419	0.434	36	Green
FOHSU0435	0.435	0.450	36	Blue
FOHSU0451	0.451	0.470	36	White
FOHSU0471	0.471	0.481	36	Green
FOHSU0482	0.482	0.499	40	Red
FOHSU0500	0.500	0.512	40	Blue
FOHSU0513	0.513	0.530	41	Green
FOHSU0531	0.531	0.542	41	Yellow
FOHSU0543	0.543	0.555	44	Black
FOHSU0556	0.556	0.575	44	White
FOHSU0576	0.576	0.594	45	Brown
FOHSU0595	0.595	0.606	46	Orange
FOHSU0607	0.607	0.619	46	Purple
FOHSU0620	0.620	0.645	50	Red
FOHSU0646	0.646	0.673	54	Blue
FOHSU0674	0.674	0.690	54	Green
FOHSU0691	0.691	0.710	54	Yellow
FOHSU0711	0.711	0.731	55	Black
FOHSU0732	0.732	0.750	56	White
FOHSU0751	0.751	0.768	60	Brown
FOHSU0769	0.769	0.795	60	Orange
FOHSU0796	0.796	0.824	61	Purple
FOHSU0825	0.825	0.845	64	Red
FOHSU0846	0.846	0.870	64	Blue
FOHSU0871	0.871	0.893	65	Green
FOHSU0894	0.894	0.907	65	Green
FOHSU0908	0.908	0.920	66	Yellow
FOHSU0921	0.921	0.937	66	Black
FOHSU0938	0.938	0.962	67	White
FOHSU0963	0.963	0.986	68	Brown
FOHSU0987	0.987	1.005	69	Orange
FOHSU1006	1.006	1.022	80	Purple
FOHSU1023	1.023	1.040	82	Red
FOHSU1041	1.041	1.074	82	Blue
FOHSU1075	1.075	1.090	82	Green
FOHSU1091	1.091	1.118	82	Yellow
FOHSU1119	1.119	1.136	82	Black

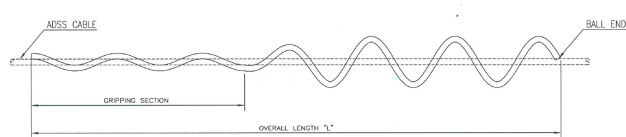
FOHSU1137	1.137	1.152	82	White
FOHSU1153	1.153	1.175	82	Brown
FOHSU1176	1.176	1.208	82	Orange
FOHSU1209	1.209	1.226	88	Purple
FOHSU1227	1.227	1.259	88	Red

DAMPERS

SPIRAL VIBRATION DAMPER

Spiral vibration damper for ADSS

Type: **SVD**

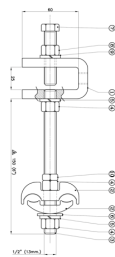


MOSDORFER	Min [in]	Max [in]	Length [in]	Color code	PLP X-Reference (*)
SVD0250BE	0.250	0.326	49	Blue	50502393
SVD0327BE	0.327	0.461	51	Black	50502272
SVD0462BE	0.462	0.563	53	Yellow	50502274
SVD0564BE	0.564	0.770	64	Green	50509862
SVD0771BE	0.771	0.876	71	Orange	50503057
SVD0877BE	0.877	1.000	75	White	50503576
SVD1001BE	1.001	1.200	90	Blue	50503909

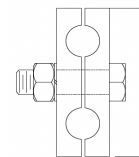
DOWNLEAD CLAMP

DOWNLEAD CLAMP

MOSDORFER	Min [in]	Max [in]	Body material (*)
FODLC0950	0.362	0.468	NBR
FODLC1190	0.469	0.562	NBR
FODLC1430	0.563	0.656	NBR
FODLC1670	0.657	0.750	NBR
FODLC1910	0.751	0.849	NBR
FODLC2160	0.850	0.948	NBR
AFODLC03075	0.300	0.750	Aluminum



Aluminum clamp with tower hardware



NBR clamp with wood pole hardware

* Cross referenced items are provided as a simplified way to determine the closest product in Mosdorfer's lineup but must be verified with detailed information (provided with Mosdorfer) at the time of making a detailed design.