

TEXOMA SAILING CLUB
2022 LADIES AT THE HELM RACE
May 28, 2022
SAILING INSTRUCTIONS

1. RULES:

- 1.1. This race will be governed by the rules as defined in *The Racing Rules of Sailing*.
- 1.2. RRS Rule 26 and A5 are changed to allow for modified start sequence and a starting window.
- 1.3. RRS Rule 33 is changed regarding communication of course changes.

2. CHANGES IN SAILING INSTRUCTIONS:

- 2.1. Any change to the sailing instructions will be posted on the Regatta Notice Board by 10:00 am on day notice is to take effect, except that any change to the schedule of races will be posted by 2000 the day before it will take effect.
- 2.2. Oral changes may be made by the Race Committee on the water prior to the time of the warning signal of any race upon the raising of signal flag "L" with one sound. Oral changes will be broadcast on VHF Channel 69.

3. NOTICES TO COMPETITORS:

- 3.1. Notices to competitors will be posted on the TSC Notice Board located at the TSC Clubhouse.
- 3.2. On the water, the race committee intends to monitor and communicate with competitors on VHF radio channel 69.

4. SIGNALS MADE ASHORE:

- 4.1. Signals made ashore will be displayed from the railing at the TSC Clubhouse.
- 4.2. Code Flag "L" means Notices to Competitors and/or changes to sailing instructions have been posted on the Regatta Notice Board.
- 4.3. Code Flag "AP" with two sound signals means the race is postponed. DO NOT leave the clubhouse area. The warning signal will not be made sooner than 30 minutes from the lowering of "AP", accompanied by one signal. This modifies "Race Signals".

5. CREW LIMITATIONS

- 5.1. Each boat shall carry no less than two persons aboard when racing, one of which must be female acting as skipper/helmsperson for the entire duration of the race.
- 5.2. No later than the warning signal for the race, a female shall helm the boat for the duration of the race. Female crew may rotate helm assignments during a race.
- 5.3. Male crew members may coach and advise the skipper/helmsperson during the race but may not helm the boat in any way. Breach of this paragraph will result in a score of DSQ.
- 5.4. Any crewperson may raise, set, adjust, and lower sails and other rigging during the race.

6. RACING SCHEDULE:

- 6.1. This race will be held on May 28, 2022. Postponed or abandoned races may be rescheduled to a later date on the club's calendar.

6.2. Daily Schedule:	0930-1000	Registration at TSC Clubhouse
	1000	Skippers Meeting at TSC Clubhouse
	1200-1210	Start Window
	1800	Awards Ceremony at TSC Clubhouse.

7. RACING AREA:

The races will be held on Lake Texoma and as indicated in the attached course diagram.

8. COURSES:

- 8.1.** Courses are diagrammed in Attachment A to these sailing instructions. The diagram shows the order in which marks are to be rounded.
- 8.2.** All marks are to be rounded to Port
- 8.3.** The length of the courses determined by the Race Officer will be final.

9. MARKS:

- 9.1.** Rounding marks will be yellow cylinders. More details will be announced during the skipper's meeting.

10. THE START:

- 10.1.** The start will be self-timed based upon the honor system. All times will use GPS based time as the standard.
- 10.2.** The starting time will be announced at the Skipper's Meeting. The start will open a 10 minute window for a boat to cross the starting line. The actual time the boat crosses the starting line will be used to calculate results. A boat starting after her starting window has closed will be scored as the Fleet start time plus 10 minutes. This changes RRS Rule 26 and A5
- 10.3.** The Start Line will be a line of sight between The Point Restaurant and the Preston Peninsula cell phone tower north of the restaurant..
- 10.4.** All fleets will start at the same time.

11. CHANGE OF THE NEXT LEG OF THE COURSE

When changing the course after the start, including notification of lost or missing marks, competitors will be notified of course changes by VHF radio. This changes Rule 33.

12. THE FINISH

- 12.1.** The Finish line will be a line of sight between The Point Restaurant and the Preston Peninsula cell phone tower north of the restaurant.
- 12.2.** A boat finishes when her bow has crossed the line.
- 12.3.** The actual time the boat crosses the finish line will be used to calculate results.

13. RECORDING TIMES

- 13.1.** Each boat shall record her start time and finish time in hh:mm:ss format. The use of the provided time sheet is encouraged.
- 13.2.** Each boat shall communicate her times to the Race Captain by telephone, text or in person, as soon as possible after finishing, but no later than 1700 hrs. The preferred method of submitting times is to photograph the time sheet and text the photograph to the Race Captain. Mobile number for reporting times is 832-444-2042.

14. PROTESTS:

- 16.1** A protesting boat will inform the race committee of their intent to protest upon finishing a race, identifying the boat being protested.
- 16.2** The Race Officer will make a sound signal upon docking. A written protest must be filed with the TSC Race Captain or designee at the TSC Clubhouse within 30 minutes from the time the Race Officer makes the sound signal upon docking. A Protest Committee will hear and rule on protests as soon as possible. Protest forms are available at the TSC clubhouse.
- 16.3** A notice will be posted on the TSC Notice Board after the expiration of the filing time limit informing the competitors when there is a hearing in which they are parties to a protest or named as witnesses. It is the responsibility of the skipper who is party to a protest to read the board.

15. SCORING

- 15.1.** The Low-Point Scoring System of RRS Appendix A will apply.
- 15.2.** PHRF handicaps will be established by the TSC Chief Handicapper. His assignments shall be final.
- 15.3.** The Time on Distance method will be used to calculate a boat's corrected time to determine a boat's finishing place.

16. AWARDS

FLEET WINNER TROPHIES – All boats will be recognized in order of finish.

TSC CHAMPIONSHIP POINTS - TSC member boats (or those who have applied for membership and pending approval) will be awarded TSC Championship points equivalent to her finish position in each race of that series. If a boat does not compete in a race, scores equivalent to DNC in that race will be used for that boat. An entrant who serves as Race Committee for a series race will receive points for the races served as Race Committee equal to the average of his/her boat's scores in the remainder of that series' races.

2022 LADIES AT THE HELM RACE

Start: _____

Finish: _____

I certify that the indicated times are true and correct.

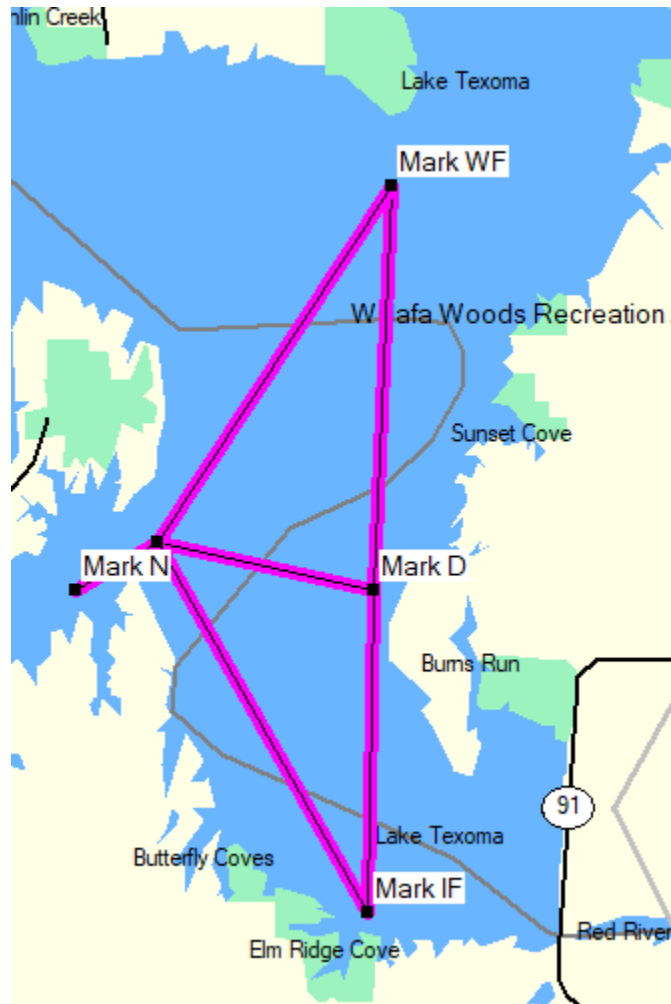
Skipper: _____

Boat: _____

Sail Number: _____

**Please photograph this form and text to
832-444-2042 as soon as possible after finishing your race.**

**APPENDIX A
FIXED MARK COURSES**



SIGNAL	MARK ROUNDING ORDER	Distance (nm)
1	N-D-N	4.8
2	N-WF-N	7.8
3	N-D-WF-N	9.3
4	N-IF-N	7.8
5	N-IF-D- N	8.7
6	N-IF-WF-N	13.2

Marks	Coordinates
Mark D	N33 51.700 W96 35.940
Mark H	N33 55.100 W96 42.951
Mark IF	N33 49.300 W96 36.000
Mark IS	N33 52.030 W96 41.585
Mark N	N33 51.700 W96 38.630
Mark WF	N33 54.723 W96 35.790
Mark O	N33 51.900 W96 36.840