

TEXOMA SAILING CLUB 2024 SPRING REGATTA SAILING INSTRUCTIONS

1. RULES:

- 1.1. This regatta is governed by the rules as defined in *The Racing Rules of Sailing*.
- 1.2. RRS Rule 26 and A5 are changed to allow for a starting window in the Recreational Fleet.
- 1.3. RRS Rule 33 is changed concerning notification of course changes.
- 1.4. RRS Rule 32.2 is changed concerning shortening the course.
- 1.5. RRS Rule 52 is changed to allow electrically powered winches.

2. CHANGES IN SAILING INSTRUCTIONS:

- 2.1. Any change to the sailing instructions will be posted before 0900 on the day it will take effect.
- 2.2. Changes to the sailing instructions may be made on by water prior to the time of the warning signal of any race upon the raising of signal flag "L" with one sound. Changes will be broadcast on VHF radio channel 69.

3. COMMUNICATIONS WITH COMPETITORS

- 3.1. Notices to competitors will be posted on the official notice boat located in the TSC clubhouse.
- 3.2. The race office will be in the TSC clubhouse. The TSC Regatta Chair may be reached at 832-444-2042 or email barneygulley@hotmail.com.
- 3.3. On the water, the race committee intends to monitor and communicate with competitors on VHF radio channel 69.

4. SIGNALS MADE ASHORE:

- 4.1. Signals made ashore will be displayed from the deck railing at the TSC Clubhouse.
- 4.2. Code Flag "L" means Notices to Competitors and/or changes to sailing instructions have been posted on the Regatta Notice Board.
- 4.3. Code Flag "AP" with two sound signals means the race is postponed. DO NOT leave the clubhouse area. The warning signal will not be made sooner than 30 minutes from the lowering of "AP", accompanied by one signal.

5. RACING SCHEDULE:

This regatta will be held on April 20-21, 2024. Two races are scheduled, one race each day. Postponed or abandoned races will not be resailed. One or more races will constitute a series.

5.1. The schedule for each day is:

Friday, April 19	1700-2000	Early Registration and Check-in at TSC Clubhouse
Saturday, April 20	0800-0930	Registration and Check-in at TSC Clubhouse
	0930	Mandatory Skippers Meeting at TSC Clubhouse
	1125	First Warning Signal
	1130	First Start of the Day
Sunday, April 21		No warning signal after 1400
	0930	Mandatory Skippers Meeting at TSC Clubhouse
	1055	First Warning Signal
	1100	First Start of the Day
		No warning signal after 1230
	1500	Awards Presentation at TSC Clubhouse

6. RACING AREA:

The races will be held on Lake Texoma. Grandpappy Point Marina is the location of the regatta harbor.

7. COURSES:

- 7.1.** Courses are diagrammed in Attachment A to these sailing instructions. The diagram shows the order in which marks are to be rounded.
- 7.2.** All marks are to be rounded to Port.
- 7.3.** No later than the warning signal, the Race Committee signal vessel will display the course to be sailed.
- 7.4.** The length of the courses determined by the Race Officer will be final.
- 7.5.** Competitors will be notified of course changes by VHF radio channel 69. This changes Rule 33.
- 7.6.** In the event that a race must be stopped due to foul weather or other reasons before the race can be shortened per Rule 32, the Race Committee may utilize the rounding times of the last mark rounded by all boats of a Division to score their race. This changes RRS Rule 32.2

8. MARKS:

- 8.1.** Rounding marks will be yellow cylinders or red/orange tetrahedrons. The Start/Finish pin will be an orange ball. More details will be announced during each day's skippers meeting.

9. ELECTRICALLY POWERED EQUIPMENT

- 9.1.** A boat may use electrically powered winches during racing. The use of autopilots is not permitted. This changes RRS 52.

10. THE START:

- 10.1.** A Five-Minute Starting Sequence (RRS 26) will be used to start each individual Division.
- 10.2.** For the Recreational Fleet, the start will open a 5-minute window for a boat to cross the starting line. The actual time the boat crosses the starting line will be used to calculate results. A boat starting after her starting window has closed will be scored as the Division start time plus 5 minutes. This changes RRS Rule 26 and A5.
- 10.3.** Each Division will be assigned a Pennant as described Appendix B of these Sailing Instructions. Pennants will serve as Class Flags for each Division.
- 10.4.** The starting line will be between a staff displaying an orange flag on the race committee signal boat and the starting pin.
- 10.5.** Boats whose Warning signal has not been made shall avoid the starting area during the starting sequence for other fleets.
- 10.6.** A boat or mark tied to the committee boat will be considered a part of the committee boat. Any boat which makes contact with this boat or mark will be considered as hitting the committee boat.

11. THE FINISH

- 11.1.** The finishing line will be between the staff displaying a blue flag on the race committee signal boat and the finishing pin.
- 11.2.** A boat that retires from a race shall notify the race committee at the first reasonable opportunity.

12. PROTESTS:

- 16.1** A protesting boat will inform the Race Committee signal boat of their intent to protest upon finishing a race, identifying the boat being protested.
- 16.2** The Race Officer will make a sound signal upon docking. A written protest must be filed with the TSC Race Captain or designee at the TSC Clubhouse within 30 minutes from the time the Race Officer makes the sound signal upon docking. A Protest Committee will hear and rule on protests as soon as possible. Protest forms are available at the TSC clubhouse. Hearing request forms are available from the race office at the TSC clubhouse.
- 16.3** A notice will be posted on the TSC Notice Board after the expiration of the filing time limit informing the competitors when there is a hearing in which they are parties to a protest or named as witnesses. It is the responsibility of the skipper who is party to a protest to read the board.

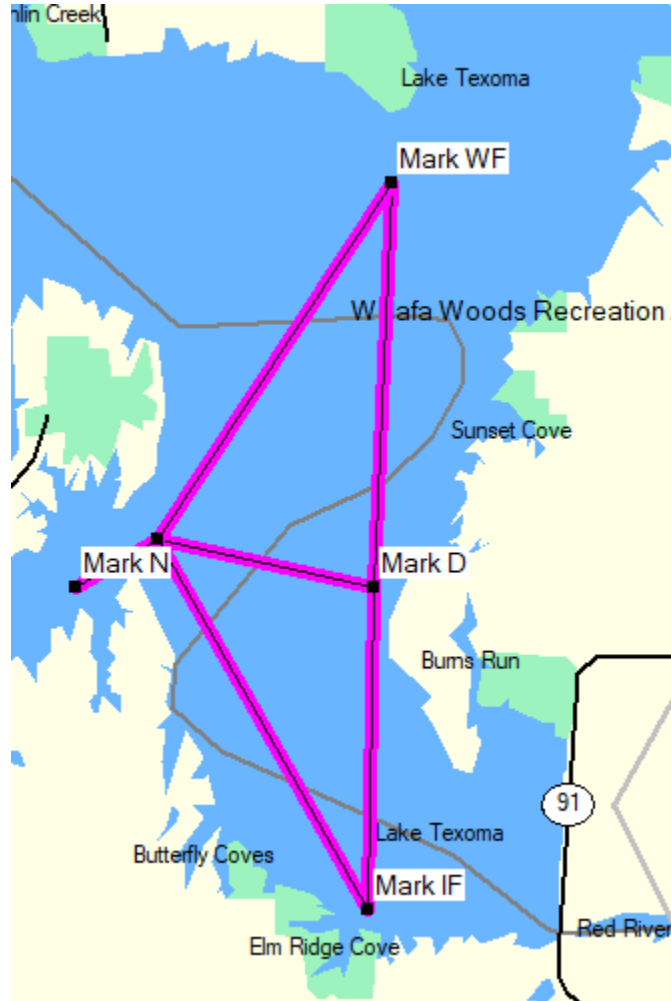
13. SCORING

- 13.1.**The Low Point Scoring System (RRS A4) will apply.
- 13.2.**All races shall be scored. No races will be excluded for scoring purposes.
- 13.3.**PHRF handicaps established by TSC will be used to calculate a boat's corrected time using a Time on Distance method to determine a boat's finishing place.
- 13.4.**Fleets will be subdivided into Divisions, grouping boats of similar handicaps.

14. AWARDS

Awards presentation will be held April 23 at 1500 hrs. or following the close of any protest period. Boats in first, second or third place in the final standings in a Division shall receive an award. If 4 or less boats are entered in a Division, only two awards will be given. If 2 or less boats are entered in a Division, only 1 award will be given.

ATTACHMENT A

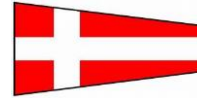


SIGNAL	MARK ROUNDING ORDER	Distance (nm)
1	N-D-N	4.8
2	N-WF-N	7.8
3	N-D-WF-N	9.3
4	N-IF-N	7.8
5	N-IF-D- N	8.7
6	N-IF-WF-N	13.2
7	N-IF-D-IF-N	12.6
8	N-IF-D-IF-D-N	13.5
9	N-D-WF-IF-N	14.8
10	N-D-WF-D-WF-N	15.4
11	N-D-WF-IF-D-N	15.6
12	N-IF-WF-IF-D-N	19.6

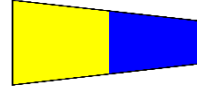
Marks	Coordinates
Mark D	N33 51.700 W96 35.940
Mark IF	N33 49.300 W96 36.000
Mark N	N33 51.700 W96 38.630
Mark WF	N33 54.723 W96 35.790

Appendix B DIVISION PENNANTS

Division A – Numeric 4



Division B – Numeric 5



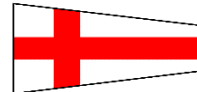
Division C – Numeric 6



Division D – Numeric 7



Division E – Numeric 8



All Divisions Start – Numeric 9

