

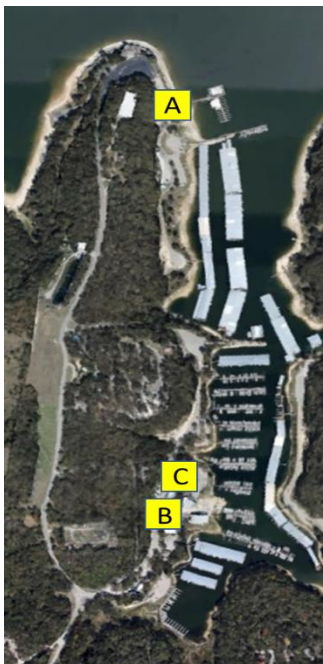


## TEXOMA SAILING CLUB EMERGENCY CARD

### EMERGENCY OR LIFE THREATENING INJURY

- Render Assistance and reduce any further hazard to the injured person (Extinguish any fire, turn off electrical breakers, neutralize any hazardous material, etc.)
- Call for Help and Emergency Medical Attention
  - 9-1-1
  - Grandpappy Point Marina
- Be prepared to tell 9-1-1
  - Current location of injured person
  - Description of boats (if requesting on-water help)
  - Where you plan to bring injured person ashore
  - Age/gender/number of injured people
  - Type of injury/situation
  - Your name and call back number
- The Grandpappy Gas Dock is the best place to meet EMT/Ambulance when coming ashore. If Grandpappy is aware of the emergency, they will be waiting for you at the gas dock to render assistance and direct medical personnel.
- At the clubhouse or marina, send someone to the “Y” on the main road to meet and direct Emergency Vehicles
- Administer first-aid and monitor until transfer to First Responder team
  - **AED** - Grandpappy Main Office
  - **Trauma Kit** - Grandpappy Main Office, Gas Dock, Yacht Sales Office
  - **First Aid Kit** - Texoma Sailing Clubhouse
- Notify a club officer about the incident at the earliest convenience after immediate emergency has resolved

### EMERGENCY RESPONSE PICKUP LOCATIONS



A	GRANDPAPPY MARINA GAS DOCK 903-465-6330 Gas - Dock	1789 Harbor Drive N33° 51'30" W096° 38'27"
B	GRANDPAPPY MARINA OFFICE 903-465-6330 - Office	132 Grandpappy Dr N33° 50'57" W096° 38'29"
C	TEXOMA SAILING CLUBHOUSE	132 Grandpappy Dr. N33°51'01" W096° 38'29"

## MINOR MEDICAL INJURY

- Render Assistance and reduce any further hazard to the injured person (Extinguish any fire, turn off electrical breakers, neutralize any hazardous material, etc.)
- Administer first aid and monitor
  - **Trauma Kit** - Grandpappy Main Office, Gas Dock, Yacht Sales Office
  - **First Aid Kit** - Texoma Sailing Clubhouse
- Emergency Rooms and Urgent Care locations

<b>Texoma Medical Center</b>	<b>Red River ER</b>
US Hwy 75 Exit 65 (FM691)	US Hwy 75 Exit 63 (US 82 and proceed South on service road)
5016 South US Highway 75 Denison, TX 75020	2022 N US Highway 75, Sherman, TX 75090
Phone: 903-416-4000	Phone: 903-357-5003
Hospital and Emergency Room	Emergency & Urgent Care
Open 24/7	Open 24/7
<b>Urgent Care - Denison</b>	
Us Hwy 75 Exit 69 (FM120 – Morton Street)	
3126 W. FM 120 (Morton Street) Denison, TX 75020	<b>ER at Sherman</b>
Phone: 903-416-7544	US Hwy 75 Exit 64 (South Loy Lake Rd)
Urgent Care and Minor Medical	4226 North Highway 75 Sherman, TX 75090
Monday - Friday: 8 a.m. – 7 p.m.	Phone: 903-487-0857
Saturday: 9 a.m. – 3 p.m.	Emergency & Urgent Care
Sunday: 1 p.m. – 5 p.m.	Open 24/7
<b>Urgent Care - Pottsboro</b>	
557 W. FM 120 Pottsboro, TX 75076	
Phone: 903-786-3911	
Urgent Care and Minor Medical	
Monday-Friday: 8:30 a.m. – 5:30 p.m.	
Saturday: 9 a.m. – 1 p.m.	

## OTHER USEFUL NUMBERS

Marina Security	General Security	Grandpappy Night Security	903-814-6706
Lake Security	Campground Patrol	US Army Corps of Engineers	903-465-4990
Mechanical Breakdown	Towing and Mechanic	Grandpappy Service Dept	903-465-6330
Mechanical Breakdown	Towing	Towboat US	800-395-2628
General Assistance	Lake Patrol - Volunteer	USCG Auxiliary	VHF Channel 16
Law Enforcement	Game Warden	Texas Parks and Wildlife	512-389-4848 Dispatch
Law Enforcement	Lake Patrol	Grayson County TX Sheriff	903-813-4091
Law Enforcement	Lake Patrol	Bryon County OK Sheriff	580-931-0673
Law Enforcement		Denison Police Dept	903-465-2422
Fire and Rescue		Pottsboro Fire Dept	903-786-3010
Fire and Rescue		Denison Fire and Rescue	903-4644427
Ambulance		Preston Emergency Services	903-786-3010