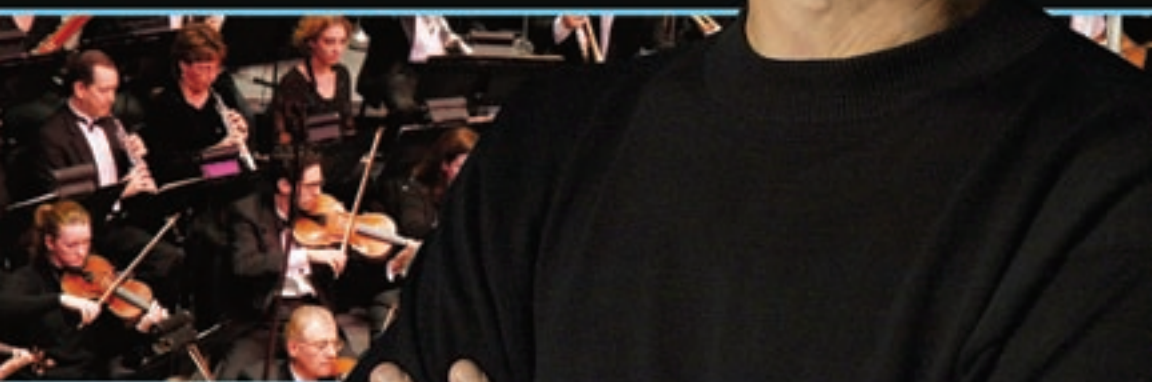


0|0
7|8

AN INAUGURAL
SEASON



REACHING NEW HEIGHTS
LAS VEGAS PHILHARMONIC

David Itkin, Music Director and Conductor

Support for the Las Vegas Philharmonic

The Philharmonic draws its support from a variety of sources. Ticket sales, while vital to our growth and development, account for approximately 45% of the total revenue needed to maintain the Philharmonic and its educational programs. The remainder comes from both the public and private sectors, including individual patrons, foundations and corporations.

Your gift establishes a personal relationship with the Philharmonic. All of our donors receive year-long recognition in our concert programs and a free subscription to *Con Brio*, our informative and entertaining newsletter. Your gift is also an investment in the exciting cultural vitalization of the Las Vegas community, where a wide variety of entertainment options are available. As you complete your subscription order, please consider making an additional donation that will enable the Philharmonic to continue presenting the kind of engaging, high-caliber performances you've come to expect and appreciate.

The Las Vegas Philharmonic is a 501c3 organization, and donations are tax deductible to the full extent of the law.



Contact Us

The Las Vegas Philharmonic
1412 South Jones Boulevard
Las Vegas, Nevada 89146
P: 702.258.5438 | F: 702.893.7757
www.lvphil.com | lvphilinfo@lvphil.com



Dear Friends



With great excitement, I come to my first season as music director of the Las Vegas Philharmonic. During this season you will hear some of my favorite works, and I hope some of yours, too. You'll probably hear some things new to you, and I look forward to those pieces becoming new favorites of yours.

During this season we'll explore many of the most popular works in our orchestral repertoire, including **Brahms' 2nd Symphony, Schubert's 9th Symphony, Beethoven's Piano Concerto No. 3, *Les Preludes* by Liszt, and Mozart's Symphony No. 40.** Our soloists this year are

an exciting combination of some of my favorite and dearest colleagues—**pianist Navah Perlman, Bulgarian violinist Kiril Laskarov, and Russian pianist Ilya Yakushev**—and some new friends with whom I'm very excited to be working in Las Vegas, **Israeli sensational 'cellist Gal Nyska** and [INSERT NARRATOR NAME]).

The most important way that we'll get to know each other during this season will be through our performances. This season, **I will give personally the Philharmonic's pre-concert talks at 7:15 p.m. before each of our Masterworks concerts**, and I hope you'll join me. During these pre-concert talks, I look forward to sharing with you my thoughts about great music and the music you'll be hearing that evening. In addition, I'll ask some of our guest artists to join me.

At the same time, I'm hoping to meet and learn about you. Not only am I looking forward to getting to know the music-lovers of my new, adopted home, I'd like also to have the opportunity to hear your thoughts about what we're doing, as well as how we're doing it. It is extremely important that the music we choose to perform is music you're excited about hearing, so please share your thoughts on that subject with me. If I don't happen to have a chance to meet you at a post-concert reception or elsewhere, then please take a moment during our season to send me an e-mail. When you do, please let me know what music or soloists you'd like to hear, what you'd rather not hear, or just about anything else.

I look forward to meeting you and hearing from you.

With best regards,

A handwritten signature in dark ink, appearing to read "David Pitman". The signature is fluid and cursive, with a long horizontal stroke at the end.

Music Director and Conductor
Las Vegas Philharmonic
daviditkin@hotmail.com

www.lvphil.com



Itkin



Laskarov



Yakushev

Masterworks I

"Music is the wine that fills the cup of silence"
Robert Fripp

09 | 29 | 07 8 p.m.

Artemus W. Ham Concert Hall

Hector Berlioz

Roman Carnival

Felix Mendelssohn

Violin Concerto in E minor

Kiril Laskarov, violin

Johannes Brahms

Symphony No. 2 in D major

Concert sponsored by Bill and Lynn Weidner

Masterworks II

"There is no truer truth obtainable by man than comes from music"
Robert Browning

11 | 17 | 07 8 p.m.

Artemus W. Ham Concert Hall

Dmitri Shostakovich

Ballet Suite No. 1

Maurice Ravel

Piano Concerto in G major

Ilya Yakushev, piano

Franz Schubert

Symphony No. 9 in C major
("The Great")

Las Vegas Philharmonic

07 | 08 Season

Save 15% Off Your Season Subscription when You Subscribe by June 15, 2007!

All-New Holiday Program



12 | 08 | 07 8 p.m.

12 | 09 | 07 2 p.m.

Artemus W. Ham Concert Hall

Maestro Itkin brings you an ALL-NEW HOLIDAY PROGRAM filled with...

Joined by the Las Vegas Master Singers

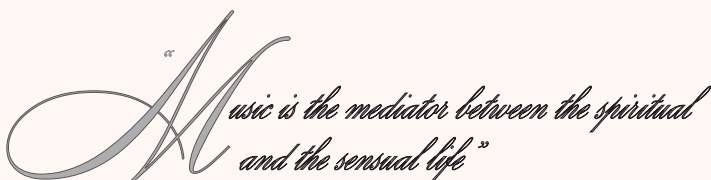
Concerts sponsored by

Sprint



Las Vegas Master Singers

Masterworks III



Ludwig van Beethoven

02 | 16 | 08 8 p.m.

Artemus W. Ham Concert Hall

Ludwig van Beethoven

Piano Concerto No. 3 in C minor

Navah Perlman, piano

Sergei Rachmaninoff

Symphony No. 3 in A minor

Concert sponsored by Richard & Wendy Plaster, Signature Homes

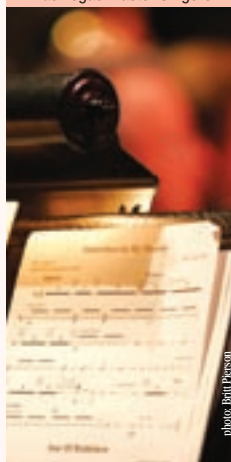


photo: Britt Person



Perlman

www.lvphil.com

Call (702) 895-ARTS (2787) or complete the enclosed subscription form to place your order.



Nyska

Masterworks IV

*"Music produces a kind of pleasure
which human nature cannot do without"*

Confucius

04 | 05 | 08 8 p.m.

Artemus W. Ham Concert Hall

Franz Liszt

Les Preludes

Camille Saint-Saëns

'Cello Concerto No. 1 in A minor

Gal Nyska, cello

Wolfgang Amadeus Mozart

Symphony No. 40 in G minor

Concert sponsored by The Las Vegas Philharmonic Guild

Guest Narrator



Chambers

Masterworks V

"He who sings scares away his woes"

Miguel de Cervantes

05 | 10 | 08 8 p.m.

Artemus W. Ham Concert Hall

Robert Schumann

Symphony No. 4 in D minor

Arthur Honegger

King David

possible narrator

Lynnette Chambers, mezzo soprano

Mark Thomsen, tenor



Thomsen

Las Vegas Philharmonic

07 | 08 Season

Save 15% Off Your Season Subscription when You Subscribe by June 15, 2007!

Family Concert

“Movie Magic”

01 | 00 | 08 7pm

Artemus W. Ham Concert Hall

Richard McGee, Guest Conductor

Featuring the music of John Williams, the highly popular Family Concert will include music from *Star Wars*, *Jaws*, *Hook*, *Schindler's List* and more! Paying tribute to the lives of two great film composers Elmer Bernstein and Jerry Goldsmith, the Philharmonic will present themes from Goldsmith's *Patton* score and Bernstein's *The Magnificent Seven*. Associate Conductor Richard McGee will lead the orchestra, as well as provide insight throughout the night. Concertmaster DeAnn Letourneau will be highlighted in *Schindler's List*.



McGee



“Star Spangled Spectacular”

07 | 04 | 07 8pm

(Gates open at 4:30pm)

The Hills Park in Summerlin

The Philharmonic, under Music Director David Itkin and Associate Conductor Richard McGee, will perform patriotic tunes and marches for this family-style Independence Day event, which has become one of Las Vegas' most popular traditions. For the finale, starting with the “1812 Overture,” there will be a full fireworks show by legendary pyrotechnics company, Zambelli Internationale. This ninth annual concert is sponsored by the Howard Hughes Corporation, the City of Las Vegas and Ruth's Chris Steak House.

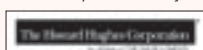


July 4, 2006



July 4, 2006

Concert Sponsored by...



The City of Las Vegas
CULTURAL AFFAIRS DIVISION



www.lvphil.com

Call (702) 895-ARTS (2787) or complete the enclosed subscription form to place your order.

Connoisseur Series

The Las Vegas Philharmonic's Connoisseur Series will once again offer intimate performances by top artists in the city's most elegant homes during the 2007-08 season. The dates will be October 3, 2007, November 7, 2007, March 5, 2008, and April 9, 2008. Each evening begins with a 6:30 p.m. reception. Tickets are \$125—or \$400 for the whole series. Watch for announcements of guest performers on the Philharmonic's website, www.lvphil.com. Call 258-5438, Ext. 226, for details.

These Performances Sponsored by...



Guest artist Soo Bae, March 2007

Please Support the Kids to Concerts Fund



Kids to Concerts

For a minimum donation of \$50, you can help grow the Las Vegas Philharmonic's Kids to Concerts Fund, which supports musical programs for Clark County youths. Each year, through funding from the title sponsor, local businesses and individuals, this program enables the Philharmonic to conduct Master Classes with young musicians performing in the presence of one of the orchestra's renowned guest artists; a Youth Concert Series, which in eight years has provided free symphonic experiences for more than 80,000 fourth- and fifth-graders; and a Young Artists Competition, whose winners perform solos in the Concert Series. Your donation, which is tax-deductible, will be acknowledged in a special listing in our concert programs for the entire season.

Las Vegas Philharmonic

07|08 Season

Save 15% Off Your Season Subscription when You Subscribe by June 15, 2007!

Join the Guild

The Las Vegas Philharmonic Guild is a four-year-old organization consisting of 250 classical music lovers whose fundraising events and membership dues have contributed more than \$110,000 to the orchestra's operating budget. Guild activities are many and varied, and include providing volunteers to assist the orchestra at its concerts, soirees, youth concerts, youth concert auditions, and, perhaps most importantly, the effort put forth at the Fourth of July concert. Call 492-1577 for membership information

A Special 50% Offer for an Inaugural Season!

The Philharmonic is offering a special discount package for new subscribers for the inaugural season of our new Music Director David Itkin. If you have been a single ticket buyer in the past or hesitant to make a seasonal commitment to all six of our sensational subscription concerts, now is the time to become a part of the Philharmonic's growing family of engaged listeners at a very affordable price!

As a one time offer to **new subscribers**, Section II seating can be purchased for 50% off of the single ticket price! This opportunity will allow new subscribers the advantage of establishing their preferred seating into the future as we build toward the opening of the Smith Performing Arts Center in just a few years. And it will put you in outstanding seats at either the orchestra or balcony levels.

In addition, you, as a new subscriber will receive all the benefits of a regular subscriber that include your favorite seating reservation, free replacements for lost tickets and a donation credit for tickets returned to the box office by 2:00 pm on the day of the performance.

This extraordinary offer in Section II is open to **new subscribers** only for their first year as subscribers and is available for a limited time.



Itkin



The Las Vegas Philharmonic



McGee



www.lvphil.com

Call (702) 895-ARTS (2787) or complete the enclosed subscription form to place your order.

Subscriber Benefits

When you become a Las Vegas Philharmonic subscriber, you will enjoy all the benefits listed below:

- ❖ **Season Discount** - save up to 15% off single ticket prices
- ❖ **Guaranteed Seating** - always have your seats and tickets secured in advance
- ❖ **Ticket Exchange** - scheduling conflict, no worry: we will exchange your tickets for another concert in the same series (based on availability) or you can donate them back to the Box Office by 2 p.m. on the day of the performance for resale and you will receive a receipt for tax purposes
- ❖ **Lost Tickets** - no problem; we're able to provide you with free replacements
- ❖ **Advance Ticket Opportunities** - receive advance notice and buy tickets for special events and concerts before they go on sale to the general public
- ❖ **Priority Seating for Next Season** - your seats will be reserved for you for next season, at the lowest prices available

Shuttle Bus Service

Tired of driving through the Las Vegas traffic to hear the Phil? Then join the growing group of Philharmonic patrons who have found a way to arrive at the concert hall relaxed and refreshed!

For subscribers and single-ticket purchasers, shuttle buses will be available to take audience members directly to the Artemus W. Ham Concert Hall from the Starbright Theatre Parking Lot in Summerlin at 2215 Thomas Ryan Blvd.

The buses will depart the parking lot at 6:20 p.m. on Saturday evenings and at 12:30 p.m. for Sunday matinée concerts. The buses will return after the concert performances. The cost for this service will be \$60 for the season or \$10 per individual concert in advance of the bus departure.

Please place your bus requests with the box office (895-2787) when purchasing your concert tickets. A bus pass will be mailed to you with your concert tickets. Bus passes will not be available for purchase at the departure lot.



2007-2008 Ticket Prices and Seating

Save 15% off the single ticket price!
When you subscribe today.

Three EASY Ways to Order:



MAIL

the enclosed
order form and
envelope with payment



PHONE

your order to:
(702) 895-ARTS (2787)



FAX

your order to:
(702) 895-1940

Your Subscription Package Includes All Masterworks (5) & Holiday Concert (1)

Section	6 Single Concerts	Save 15% Subscribe by June 15, 2007	Save 10% Subscribe after June 15, 2007	Single Ticket Prices*
I	\$438 ⁰⁰	\$372 ³⁰	\$394 ²⁰	\$73 ⁰⁰
II	\$300 ⁰⁰	\$255 ⁰⁰	\$270 ⁰⁰	\$50 ⁰⁰
III	\$174 ⁰⁰	\$147 ⁹⁰	\$145 ⁶⁰	\$29 ⁰⁰

New Subscriber? Receive 50% off the single ticket price
in Section II only when you purchase all six concerts
for \$150⁰⁰ by September 28, 2007

Add These Special Event Concerts to Your Order!

July 4th Concert	V.I.P.	Adult (Lawn)	6 to 12 (Lawn)	0 to 5 (Lawn)
In Advance	\$100 ⁰⁰ *	\$25 ⁰⁰	\$20 ⁰⁰	FREE!
At the Gate	N/A	\$25 ⁰⁰	\$25 ⁰⁰	FREE!

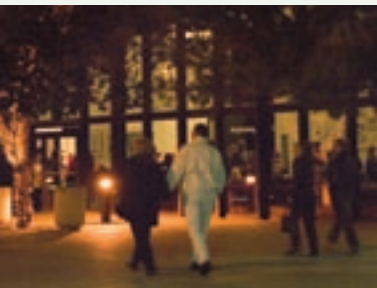
*No children price. Alcohol service precludes minors.

	Adult	3 to 12
Family Concert	\$10	\$7

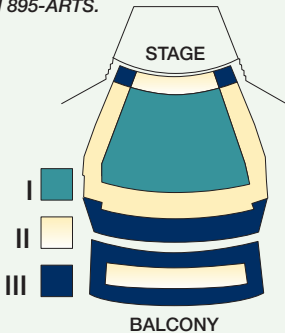
\$10⁰⁰ per concert, \$60⁰⁰ subscription

Soirée Series\$125⁰⁰ single ticket, \$400⁰⁰ subscription (4)

Group Prices Available for All Concerts. Call 895-ARTS.



*All ticket sales are final. No refunds can be made on ticket orders. Subscription tickets will be mailed after September 11, 2007. Renewing subscribers will be seated first. Subscription requests are filled in the order in which they are received. All programs and artists are subject to change.



Artemus W. Ham Concert Hall



www.lvphil.com

Call (702) 895-ARTS (2787) or complete the enclosed subscription form to place your order.



David Hahn, Music Director

1412 South Jones Boulevard
Las Vegas, Nevada 89146
702.258.5438
www.lvphil.com

If you receive two brochures, please pass one on to a friend.



U.S. AIRWAYS



PERFORMING ARTS GROUP
2004 • 2005 • 2006



"This project has been funded, in part, by a grant from the Nevada Arts Council, a state agency, and the National Endowment for the Arts, a federal agency."



SEASON TICKETS AVAILABLE NOW! Call 702.895.ARTS

