



1412 S. Jones Blvd. | Las Vegas, NV 89146 | 702-258-5438 | lvphil.com



U.S. AIRWAYS

Official airline of the Las Vegas Philharmonic



NATIONAL
ENDOWMENT
FOR THE ARTS

"This project has been funded, in part, by a grant from the Nevada Arts Council, a state agency, and the National Endowment for the Arts, a federal agency."



Except where noted all photos by Audrey Dempsey, Infinity Photo
Design by Dempsey Graphics, Craig Meland, Senior Designer
Editor-in-Chief, Renato N. Estacio, LVP Director of Marketing

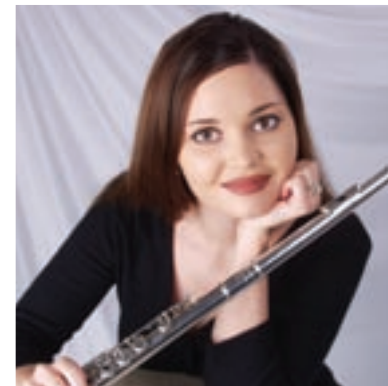
NonProfit Org
U.S. Postage
PAID
Las Vegas, NV
Permit No. 2613



DeAnn Letourneau, Concertmaster



Tom Wright, Trumpet



Tina Hadley, Flute

Celebrating **10 Years** of **Great Music**

Season Tickets **AVAILABLE NOW!** Call **702.895.2787**

08/09 season

Dear Friends



As you may have already observed, there are some big changes at the Philharmonic this year. This season, for the first time, we'll offer two different series of concerts: our traditional Masterworks series and our new Pops series. I hope you'll choose both and join us all season long for great music and entertainment.

The Pops is a series of three concerts, and we are very excited about this new entertainment option for Las Vegas. In the Fall 2008, we're joined by the spectacular and showy jazz trumpeter Byron Stripling with his tribute to Louis Armstrong. In December, subscribers to this series will hear our Christmas Celebration concert; in the Spring 2009, our new Pops series will close with a special performance of Broadway hits by Brent Barrett, star of the Phantom Las Vegas Spectacular.

On opening night of the 2008-2009 Masterworks series, we'll welcome to Las Vegas my dear friend and colleague, the legendary pianist Misha Dichter. Misha's playing is as fresh and dynamic now as the day he won the Tchaikovsky Piano Competition in 1966, and he'll be performing the ever-popular piano concerto by Edvard Grieg.

In other concerts this season, we'll be joined by the world's reigning king of the saxophone, Eugene Rousseau, one of the 'cello world's brightest young stars, Zuill Bailey, and the dazzling young violinist Shannon Lee.

Our repertoire for the season includes many of your favorites, including the Paganini Violin Concerto #1, Dvořák's fiery Symphony #7, and Rimsky-Korsakoff's magical Scheherazade. In addition, we'll have an all-Tchaikovsky program on Valentine's Day, and close the season in May of 2009 with Beethoven's Ninth Symphony featuring the Las Vegas Master Singers, The Desert Chorale, and four magnificent vocal soloists.

Once again during the 2008-2009 season, I'll be giving our pre-concert talks at 7:15, before all our Masterworks concerts. I hope you'll join me for our talks, and all season long for great music with the Philharmonic.

With best regards,

A handwritten signature in dark ink, appearing to read 'David Itkin'. The signature is fluid and cursive, with a long horizontal stroke at the end.

David Itkin
daviditkin@lvphil.com



Robin Reinarz, Cello

Masterworks Series

September 6, 2008 8 p.m.

Masterworks I

Misha Dichter plays Grieg

Misha Dichter, piano

RAVEL	Bolero
GRIEG	Piano Concerto in A minor
DVOŘÁK	Symphony #7

Sponsored by Rick and Jeri Crawford, Green Valley Grocery



Misha Dichter

November 15, 2008 8 p.m.

Masterworks II

The magic of Scheherazade

Eugene Rousseau, alto saxophone

MENDELSSOHN	The Hebrides ("Fingal's Cave")
TOMASI	Concerto for Alto Saxophone
RIMSKY-KORSAKOFF	Scheherazade

Sponsored by George and Denise Mehocic



Eugene Rousseau

All performances will be at Artemus W. Ham Concert Hall unless otherwise noted.

Masterworks Series

February 14, 2009 8 p.m.

Masterworks III

All-Tchaikovsky concert

Zuill Bailey, cello

TCHAIKOVSKY Symphony #6 "Pathétique"
Roccoco Variations
Nocturne for 'cello and orchestra
Romeo and Juliet
Overture-Fantasy



Zuill Bailey

All performances will be at Artemus W. Ham Concert Hall unless otherwise noted.

April 4, 2009 8 p.m.

Masterworks IV

Paganini and Shostakovich fireworks

Shannon Lee, violin

MOZART Overture to *Don Giovanni*
PAGANINI Violin Concerto #1
SHOSTAKOVICH Symphony #5

Sponsored by The Las Vegas Philharmonic Guild



Shannon Lee



Alex Stopa, Robert Bonora, Patrick Bowen, and Joni LeClercq, Percussionists

Masterworks Series

May 16, 2009 8 p.m.

Masterworks V

Beethoven's Ninth!

Veera Asher, soprano

Juline Barol-Gilmore, mezzo-soprano

Mark Thomsen, tenor

Paul Rowe, baritone

MILHAUD *La Création du Monde*

BEETHOVEN *Symphony #9*

Las Vegas Master Singers,

Jocelyn K. Jensen, Ph.D., Director

Desert Chorale, *Nancy Helm, Director*

Sponsored by Art and CJ Woolston



Juline Barol-Gilmore



Mark Thomsen



Paul Rowe



Veera Asher

All performances will be at Artemus W. Ham Concert Hall unless otherwise noted.



David Itkin, Music Director & Conductor

Pops Series

October 11, 2008 8 p.m.

Pops I

A tribute to Louis Armstrong

with Trumpeter and showman

Byron Stripling



Byron Stripling

December 13, 2008 2 p.m. & 8 p.m.

Pops II

A Christmas Celebration!

Sponsored by Sprint



The Las Vegas Philharmonic

March 21, 2009 8 p.m.

Pops III

"You and the Night and the Music"

a night on Broadway with "Phantom" star

Brent Barrett

Sponsored by Bill and Lynn Weidner



Brent Barrett

All performances will be at Artemus W. Ham Concert Hall unless otherwise noted.





Jim Stallings "Painter To The Symphonies"

Jim Stallings will appear at our Masterworks V concert! He is considered an artist's artist and will paint his impressions of the music that the audience is hearing, on stage, while the orchestra is performing *La Création du Monde*. The painting will be available for purchase after the concert.

Private painting classes at age eight started the course of Stallings' destiny. He has explored the relationship of music and pure color for the whole of his artistic career. Deciding early on to pursue canvasses of whimsy and purity, questions about the relationship of music to art led Stallings to paint live on stage with major symphony orchestras.

Painting the sound of music was a defining moment Stallings career. He has continued to explore the vibrational harmony of music, color and the human spirit with world renowned conductors and physicists which have led to several experiments aboard the spaceship Columbia.

Never complacent, Stallings will continue to stretch his artistic limits while enjoying traveling, meeting new friends and creating new works that are unfolding as this artist lives his dreams.

Star Spangled Spectacular

July 4, 2008 8 p.m.

The Hills Park in Summerlin

The Philharmonic, under Music Director David Itkin and Associate Conductor Richard McGee, will perform patriotic tunes and marches for this family-style Independence Day event, which has become one of Las Vegas' most popular traditions. For the finale, starting with the "1812 Overture," there will be a full fireworks show by legendary pyrotechnics company, Zambelli Internationale. This concert is sponsored by the Howard Hughes Corporation, the City of Las Vegas and Ruth's Chris Steak House.

Sponsored by:



A photograph of three musicians performing outdoors at night. On the left, a man in a light blue shirt and dark pants plays a violin. In the center, a man in a black shirt plays a double bass. On the right, a man in a white shirt and dark pants plays a violin. They are standing in front of a large, illuminated, textured wall that looks like a rock formation or a large sculpture. The scene is lit with warm, golden light.

Connoisseur Series

The Philharmonic will offer intimate performances of top artists in its Connoisseur Series during the 2008-09 season. The city's most elegant settings provide the backdrop for these exquisite evenings which commence at 6:30 p.m. with a delightful reception of hors d'œuvres and cocktails. The dates will be October 1, 2008; November 5, 2008; February 4, 2009; and March 25, 2009. Guest performers and locations will be announced on the Philharmonic's website, www.lvphil.com early Fall 2008. To reserve your place and receive more information, please call (702)258-5438, ext. 226. Individual tickets are \$125, or \$400 for the whole series.

Homes provided by Paula Sepulvado & Kristen Routh Silberman, REALTORS®

A close-up photograph of a group of children smiling and looking up. The children have various hair colors and are wearing colorful clothing. The image is bright and cheerful, with a soft focus on the children's faces.

Kids To Concerts

For a minimum donation of \$50, you can help grow the Las Vegas Philharmonic's Kids to Concerts Fund, which supports musical programs for Clark County youths. Each year, this program enables the Philharmonic to conduct Master Classes with young musicians performing in the presence of one of the orchestra's renowned guest artists; a Youth Concert Series, which in nine years has provided free symphonic experiences for more than 100,000 fourth- and fifth-graders; and a Young Artists Competition, whose winners perform solos in the Youth Concert Series. Your donation, which is tax-deductible, will be acknowledged in a special listing in our concert programs for the entire season.



Join The **Guild**

For five years, the Philharmonic's Guild has contributed to the immense growth of the Las Vegas Philharmonic. Over 250 dynamic classical music lovers and members volunteer to assist the orchestra at its concerts, soirées, youth concert auditions, and with the biggest undertaking of all – the Fourth of July celebration. For membership information, visit them on the web at www.lasvegasguild.com, or call (702) 258-5438, x 227. Come join in the activities and become a part of this wonderful group!

Join **MUSE**

Founded in 2007, MUSE welcomes culturally interested Las Vegans. Each season, MUSE hosts a series of social and educational events to raise awareness, build affinity as well as cultivate the next generation of the audience base and leaders for the Las Vegas Philharmonic.

As a MUSE member, you have access to many benefits, including; discounted symphony tickets, exclusive invitations to pre- and post-performance social events and advance notice of special events such as galas and private social activities.

For more information about MUSE - becoming a member, corporate sponsor programs and benefits, visit the Las Vegas Philharmonic Website at: www.lvphil.com, email MUSE at muse@lvphil.com or contact LV Philharmonic MUSE Program at (702) 258-5438 x227.



Subscriber Benefits

When you become a Las Vegas Philharmonic subscriber, you will enjoy all the benefits listed below:

- ✓ **Season Discount** - save up to 20% off single ticket prices
- ✓ **Guaranteed Seating** - always have your seats and tickets secured in advance
- ✓ **Ticket Exchange** - scheduling conflict, no worry: we will exchange your tickets for another concert in the same series (based on availability) or you can donate them back to the Box Office by 2 p.m. on the day of the performance for resale and you will receive a receipt for tax purposes
- ✓ **Lost Tickets** - no problem; we're able to provide you with free replacements
- ✓ **Advance Ticket Opportunities** - receive advance notice and buy tickets for special events and concerts before they go on sale to the general public
- ✓ **Priority Seating for Next Season** - your seats will be reserved for you for next season, at the lowest prices available



David Itkin, Music Director & Conductor



DeAnn Letourneau, *Concertmaster*

Support for the Philharmonic

The Las Vegas Philharmonic continues to play to capacity audiences throughout the concert season and has emerged as the leading musical organization in Southern Nevada. Planning for the future includes an expanded subscription series and increased educational programs for students, young and old. The Philharmonic has become a dynamic ambassador for the arts, and with your help, it can continue to provide quality programming for our community.

Ticket sales, while an important measure of our success, provide less than half the revenue necessary to sustain the Philharmonic's concert series, youth programs and educational outreach efforts. A broad base of support from foundations, local businesses and individuals is vital to maintaining the Philharmonic's extraordinary level of artistic excellence and its accessibility to the community. We invite you to examine the opportunities and benefits of partnering with the Las Vegas Philharmonic. Together, we will make great music happen.

The Las Vegas Philharmonic is a 501c3 organization, and donations are tax deductible to the full extent of the law.



Shuttle Bus Service

Tired of driving through the Las Vegas traffic to hear the Phil? Then join the growing group of Philharmonic patrons who have found a way to arrive at Artemus W. Ham Concert Hall relaxed and refreshed!

For subscribers and single-ticket purchasers, shuttle busses will be available to take audience members directly to the Artemus W. Ham Concert Hall from the Starbright Theatre Parking Lot in Summerlin at 2215 Thomas Ryan Blvd.

The busses will depart the parking lot at 6:20 p.m. on Saturday evenings and at 12:30 p.m. for matinée concerts. The busses will return after the concert performances. The cost for this service will be \$10 per individual concert in advance of the bus departure.

Please place your bus requests with the box office (895-2787) when purchasing your concert tickets. A bus pass will be mailed to you with your concert tickets. Bus passes will not be available for purchase at the departure lot. Please reserve your seat at least 24 hours in advance.

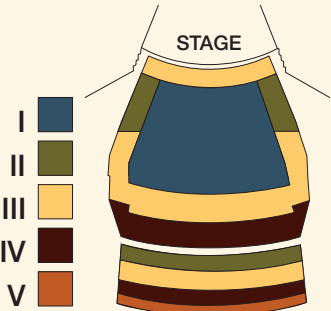
Ticket Prices and Seating

Masterworks Series (5 Performances)

	5 Single Concerts	Save 10% Subscribe by March 15, 2008	Save 5% Subscribe after March 15, 2008	Single Ticket Prices*
Section I	\$375 ⁰⁰	\$337 ⁰⁰	\$356 ⁰⁰	\$75 ⁰⁰
Section II	\$250 ⁰⁰	\$225 ⁰⁰	\$237 ⁰⁰	\$50 ⁰⁰
Section III	\$175 ⁰⁰	\$157 ⁰⁰	\$166 ⁰⁰	\$35 ⁰⁰
Section IV	\$150 ⁰⁰	\$135 ⁰⁰	\$142 ⁰⁰	\$30 ⁰⁰
Section V	\$125 ⁰⁰	\$112 ⁰⁰	\$118 ⁰⁰	\$25 ⁰⁰

Pops Series (3 Performances)

	3 Single Concerts	Save 10% Subscribe by March 15, 2008	Save 5% Subscribe after March 15, 2008	Single Ticket Prices*
Section I	\$195 ⁰⁰	\$175 ⁰⁰	\$185 ⁰⁰	\$65 ⁰⁰
Section II	\$150 ⁰⁰	\$135 ⁰⁰	\$142 ⁰⁰	\$50 ⁰⁰
Section III	\$105 ⁰⁰	\$94 ⁰⁰	\$99 ⁰⁰	\$35 ⁰⁰
Section IV	\$90 ⁰⁰	\$81 ⁰⁰	\$85 ⁰⁰	\$30 ⁰⁰
Section V	\$75 ⁰⁰	\$67 ⁰⁰	\$71 ⁰⁰	\$25 ⁰⁰



Artemus W. Ham Concert Hall

Masterworks and Pops Series (8 Performances)

	8 Single Concerts	Save 20% Subscribe by March 15, 2008	Save 15% Subscribe after March 15, 2008
Section I	\$570 ⁰⁰	\$456 ⁰⁰	\$484 ⁰⁰
Section II	\$400 ⁰⁰	\$320 ⁰⁰	\$340 ⁰⁰
Section III	\$280 ⁰⁰	\$224 ⁰⁰	\$238 ⁰⁰
Section IV	\$240 ⁰⁰	\$192 ⁰⁰	\$204 ⁰⁰
Section V	\$200 ⁰⁰	\$160 ⁰⁰	\$170 ⁰⁰



Add This Special Event Concert to Your Order!

July 4th Concert	V.I.P.	Adult (Lawn)	6 to 12 (Lawn)	5 & Under (Lawn)
In Advance	\$100 ⁰⁰ *	\$25 ⁰⁰	\$20 ⁰⁰	FREE!
At the Gate	N/A	\$30 ⁰⁰	\$25 ⁰⁰	FREE!

*No children price. Alcohol service precludes minors.

*All ticket sales are final. No refunds can be made on ticket orders.

Subscription tickets will be mailed and single tickets will go on sale August, 2008.

Renewing subscribers will be seated first. Subscription requests are filled in the order in which they are received.

All programs and artists are subject to change.

Group Prices Available for All Concerts. Call 895-ARTS.