

THE 2025 RCHJA

Autumn Extravaganza

Join us for hunter/jumper competition for riders of all levels from the leadline to the 1.0m, featuring the Frankly My Derby and Hunter Spectaculaire Hunter derbies courtesy of the Yaldir-Costello Family.



SEPT | 20-21 | 2025

Clay County Fairgrounds
Green Cove Springs, Florida

RCHJA 2025 Rules and Regulations

1. All trainers, exhibitors, and guardians must be familiar with and are responsible for adhering to the Rules and Regulations set for RCHJA.
2. RCHJA presents its shows under the guidance of USEF's rules and regulations. Where those rules and regulations do not apply, the decision of RCHJA management is binding.
3. Any act of discourtesy to any judge, official, management, owner, exhibitor, trainer or staff member will be grounds for removal without refund and may bar said individual from participating in future RCHJA events.
4. Stalls are held either by entry with credit card on file or by prepayment, refundable if cancelled on or before the entry deadline (one week prior to show). Stall counts can be texted to Alexis Gamel at 904-993-2053.
5. Scratch Fees: a scratch fee is billable at the time of scratch regardless of entry deadline. Stalls can be cancelled prior to the pre-entry deadline without penalty; however, a scratch fee will apply. Stalls cancelled after the pre-entry deadline are due in full plus any applicable scratch fee.
6. Coggins provided with stall entries will expedite the check-in process. **All horses must be checked into the office accompanied by a negative Coggins prior to unloading unless provided in advance.**
7. All riders must check into the office prior to riding. **Back numbers and ASTM/SEI approved helmets must be worn by all riders when mounted.** Back numbers will not be issued without an open check or credit card on file along with a signed liability release.
8. Ponies to be exhibited by adults only in open divisions with suitability considered.
9. Lunging is limited to individuals 16 years of age or older.
10. In cases where a division offers more than one jump height, rider must confirm jump height by 4pm the day before showing. **Same-day adds and scratches must be done at the office including additional warm up rounds.**
11. Online adds/scratches will close at 4pm daily.
12. RCHJA can accept cash, check, or credit card (4% processing fee applies). Billing splits must be confirmed prior to the close of office hours on Friday. Returned checks and credit cards that are non-negotiable for any reason are subject to a \$40 fee. Repeat offenders may be barred from returning to RCHJA events or may be required to leave a cash deposit at Management's discretion.
13. Points will be awarded as follows: First – 10, Second – 6, Third – 4, Fourth – 2, Fifth – 1, Sixth – ½, Champion – 20, Reserve Champion – 12. Champion/Reserve Champion ribbons to be awarded for all divisions with three or more classes.
14. Division/Class splits left to Management's discretion.

Gate calls will be enforced without exceptions.

Under Florida law, an equine activity sponsor or equine professional is not liable for an injury to, or the death of, a participant in equine activities resulting from the inherent risks of equine activities.

RCHJA 2025 SEASON PROUD PARTNERS



HUNTLEY
EQUESTRIAN®



GRAND PRIX



FARMCREEK TACK



Kristen A
PHOTOGRAPHY



THE 2025 RCHJA SHORT/LONG STIRRUP HUNTERS
IS PROUDLY SPONSORED BY

HUNTLEY EQUESTRIAN

+ Grand Prix

A PASSION FOR RIDING AND THE LOVE OF HORSES



FOOTWEAR + APPAREL

From paddock boots to half chaps, riding jackets to rain pants, Huntley Equestrian and Grand Prix have you covered with durable and comfortable gear.



RIDING ACCESSORIES

Whether you're shopping for fashion or function, Huntley Equestrian and Grand Prix has a wide variety of travel totes, equipment bags, and so much more!



HORSE CARE + TACK

Bridles, martingales, halters and leads. Huntley Equestrian and Grand Prix have all your needs met including leather care!



www.HuntleyEquestrian.com



www.GrandPrixRiding.com



Sales@HuntleyEquestrian.com



Sales@GrandPrixRiding.com



866-985-7877



HUNTLEY
EQUESTRIAN®



GRAND PRIX®

RCHJA INVITES YOU TO THE

HUNTER SPECTA CULAIRE



&



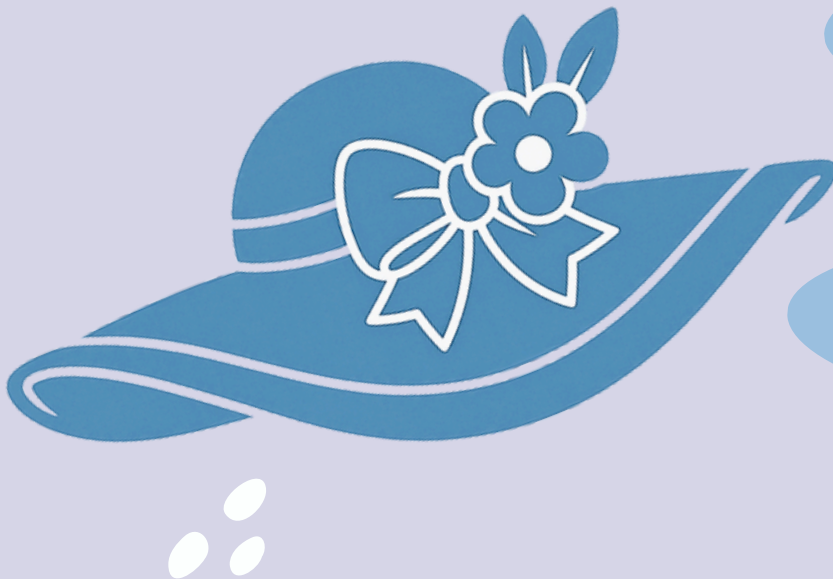
FRANKLY MY DERBY

Courtesy of the Costello-Yaldir Family

September 20-21, 2025
Green Cove Springs, Florida

HOSTED BY BV EQUESTRIAN SHOW STABLES

DERBY GARDEN PARTY



SEPTEMBER 20TH

4:00PM TO 6:00PM

AT RIVER CITY'S AUTUMN
EXTRAVAGANZA HORSE SHOW

2493 FL-16, Green Cove
Springs, FL 32043

FOOD • FUN • PRIZES

www.bv-equestrian.com

A rider in a dark jacket and helmet is jumping a white horse over a wooden fence. The background shows a blurred landscape with trees and a small building.

BV EQUESTRIAN SHOW STABLES

Premier Hunter Jumper Training, Boarding, & Sales

OUR PROGRAM

Located in St. Augustine, FL, our facility features 28 stalls, an arena with premium footing, lush grass paddocks, and 24/7 staff presence. BV Equestrian provides a safe, well-managed environment where horses receive exceptional care and riders benefit from personalized, full-service training and boarding. Our program is thoughtfully designed to support both competitive and developmental goals, guiding riders toward success in and out of the show ring.

HORSE SHOWING

BV Equestrian regularly attends USEF and USHJA-rated horse shows across the Southeast, including WEC Ocala, TIEC, Blowing Rock, Aiken, and more. In our first year, our riders and their horses have earned numerous champions, reserve champions, and class wins at rated shows. Whether you're aiming for your first show or the winner's circle, BV is the place to grow, compete, and achieve your goals alongside a team that's committed to your success.

SALES

Our sales program combines personalized service, clear communication, and strong industry connections to ensure every horse finds their ideal home and every client finds the right partner.



COURSE LANDSCAPING PROVIDED BY

**PAT'S
NURSERY, INC.**

7060 HWY.17 • Fleming
Island, FL 32003

904-284-2011

At Pat's Nursery, Inc., our goal is to help you beautify your home both inside and out with landscaping and plants that thrive in the North Florida area. We feature a broad spectrum of trees, landscape plants and shrubs along with ground cover and beautiful blooming flowers that will acclimate to your home in sunny Florida.

PLANTS - POTS - LANDSCAPING - MULCH - SOD - AND MORE!

(904) 825-1782

6355 County Road 208

St. Augustine, FL 32092



ALL YOUR FEED AND STABLE NEEDS ARE MET WHEN YOU HORSE SHOW WITH RCHJA!



Shavings and hay orders are a breeze to add to your entry by simply texting Alexis at 904-993-2053 and will be delivered to your stalls. Looking for something more? Just let us know and we will make arrangements for Feedin' Time to supply your every need.

RCHJA 2025 Fee List

Weekend Stall (Friday-Sunday)	\$75.00
Shavings (2 bag minimum)	\$10.00/bag
Security	\$30.00
Ship In	\$35.00/day
Non-Showing Fee	\$50.00
Office Fee	\$15.00
Weekend RV Hookup (\$45/daily rate available)	\$80.00
Standard Class Fee	\$20.00/ea
SEMF Medal Class	\$25.00/ea
Featured Class Fee	\$35.00/ea
Non-negotiable Payment	\$40.00
Post-Entry Fee (Entries received after entry deadline)	\$25.00
Post-Close Fee (Accounts not closed prior to end of the show)	\$25.00
Scratch Fee (Any entry submitted that is subsequently cancelled)	\$25.00
Annual Membership	\$60.00
Lifetime Membership	\$350.00
Barn/Family Membership	\$100.00
Division/High Point Sponsorship (includes EOY perpetual trophy)	\$800.00
Medal Sponsorship (includes EOY award plaque)	\$600.00
Year-End Award Renewal	\$50.00
Featured Class Sponsorship	\$250.00
Show Program Advertisements	\$150/full page \$100/half page
Arena Banners (6' long x 2' high banner to be provided)	\$500.00

Entries should be completed online through www.HorseShowsOnline.com. RCHJA will be able to accept cash, check or credit card (4% processing fee applies) as payment methods.

Splits must be finalized by office closure on Friday. Same day adds/scratches must be performed at the office and cannot be done at the ingates.

Stalls must be reserved prior to the show via online entry with credit card on file. Stall requests received after the pre-entry deadline will be accommodated based on availability.

Coggins must be submitted to Entries@rchja.org in advance or provided prior to unloading at the show.

River City Hunter Jumper Association, LLC presents the

AUTUMN EXTRAVAGANZA

September 20-21, 2025

Saturday, September 20th

Main Ring – 7:30 a.m. Start

Judge: Patty Messina

- 500. Warm Up AM
- 61. RCHJA 2' U/S
- 59, 60. RCHJA 2' O/F
- 70. Children's Hunter Pony U/S
- 68, 69. Children's Hunter Pony O/F 2', 2'3, 2'6"
- 64. Intermediate Rider Hunter U/S
- 62, 63. Intermediate Rider Hunter O/F 2'3"
- *WATER AND DRAG***
- 501. Warm Up PM
- 67. RCHJA 2'6" U/S
- 65, 66. RCHJA 2'6" O/F
- 73. Low Children's/Adult Hunter U/S
- 71, 72. Low Children's/Adult Hunter O/F 2'6"
- 79. RCHJA 3' U/S
- 77, 78. RCHJA 3' O/F
- 76. Children's/Adult Amateur Hunter U/S
- 74, 75. Children's/Adult Amateur Hunter O/F 3'
- *WATER AND DRAG***
- 58. HUNTLEY Short/Long Stirrup Hunter U/S
- 56, 57. HUNTLEY Short/Long Stirrup Hunter O/F 2'
- 55. Beginning Hunter U/S
- 53, 54. Beginning Hunter O/F 18"
- **600. Frankly My Derby**
- **601. Hunter Spectaculaire**

2'6" o/f section of Ponies will run with RCHJA 2'6"

Pony Ring – 7:30 a.m. Start

Judge: Jaime Gibson

- 1. Model Horse
- 2. Model Pony
- 3. Hunter Breeding
- 502. Warm Up
- 52. W/T Crossrails U/S
- 50, 51. W/T Crossrails O/F
- 82. WTC Crossrails U/S
- 80, 81. WTC Crossrails O/F
- *WATER AND DRAG***
- 4. Lead Line
- 5. Walk U/S
- 6. Walk Equitation
- 7. Walk Poles
- 8. W/T 9U U/S
- 9. W/T 9U Equitation
- 10. W/T 9U Poles
- 11. W/T 10-17 U/S
- 12. W/T 10-17 Equitation
- 13. W/T 10-17 Poles
- 14. W/T Adult U/S
- 15. W/T Adult Equitation
- 16. W/T Adult Poles
- 17. Open WTC U/S
- 18. Open WTC Pleasure
- 19. Open WTC Poles

Saturday, September 20th: Jumper Ring – to start at conclusion of Pony Ring

Judge: Jaime Gibson

- 300. Puddle Jumper Crossrails IV.2(b)
- 303. Beginner Jumper .55m IV.2(b)
- 306. Novice Jumper .65m IV.2(b)
- *WATER AND DRAG***
- 309. Modified Jumper .75m IV.2(b)
- 312. Hopeful Jumper .85m II.2(b)
- 315. Training Jumper .95m II.2(b)
- 318. Open Jumper 1m II.2(b)

The Jumper classes will begin following the course change at the end of our Pony Ring program. No Warm Ups.

**** Derby classes will begin with an estimated start time of 4pm, subject to change based on conclusion of regularly scheduled program.**

WATER AND DRAG SUBJECT TO CHANGE BASED ON ENTRIES.

River City Hunter Jumper Association, LLC presents the

AUTUMN EXTRAVAGANZA

September 20-21, 2025

Sunday, September 21st

Main Ring – 7:30 a.m. Start

Judge: Jaime Gibson

202. W/T Crossrails Equitation Flat

503. Warm Up AM

200, 201. W/T Crossrails Equitation O/F

205. WTC Crossrails Equitation Flat

203, 204. WTC Crossrails Equitation O/F

211. Beginner Rider Equitation Flat

209, 210. Beginner Rider Equitation O/F 18"

WATER AND DRAG

504. Warm Up PM

214. Short/Long Stirrup Equitation Flat

400. The Reinhard Family Memorial Medal 2'

212, 213. Short/Long Stirrup Equitation O/F 2'

220. Children's Pony Eq Flat

218, 219. Children's Pony Eq O/F 2', 2'3", 2'6"

WATER AND DRAG

223. Low Children's/Adult Eq Flat

401. SEMF Low Child/Adult Qualifier 2'6"

221, 222. Low Children's/Adult Eq O/F 2'6"

217. Intermediate Rider Equitation Flat

215, 216. Intermediate Rider Eq O/F 2'3"

Jumper Ring – 7:30 a.m. Start

Judge: Patty Messina

20. Pleasure Horse

21. Pleasure Pony

505. Warm Up AM

301, 302. Puddle Jumper Crossrails IV.I, IV.2(b)

304, 305. Beginner Jumper .55m IV.I, IV.2(b)

307, 308. Novice Jumper .65m IV.I, IV.2(b)

WATER AND DRAG

310, 311. Modified Jumper .75m IV.I, IV.2(b)

313, 314. Hopeful Jumper .85m II.I, II.2(b)

316, 317. Training Jumper .95m II.I, II.2(b)

319, 320. Open Jumper 1m II.I, II.2(b)

WATER AND DRAG

506. Warm Up PM

226. Children's/Adult Equitation Flat

402. SEMF Child/Adult Qualifier 3'

224, 225. Children's/Adult Eq O/F 3'

Featured Classes

(600) Frankly My Derby – *Sponsored by the Yaldir-Costello Family.* Limited to junior & amateur horse/rider combinations who are not jumping above 2'3" at the same show. Base fence height offered at 2' with 2'3" high options.

(601) Hunter Spectaculaire – *Sponsored by the Yaldir-Costello Family.* Open to all horse/rider combinations. Combinations may not cross enter in Frankly My Derby (600). Base fence height offered at 2'6" with 2'9"/3' high options.

Both Hunter Derby classes will host a traditional two round format with a two-judge panel. The first round will be judged on performance, hunter pace, jumping style, quality and movement. A base score will be given by each judge for an averaged first round score. One (1) bonus point will then be added to the base score for each high option attempted regardless of refusal, rail down or loss of good jumping style. Scores will be announced at the conclusion of each round and a cutoff score will be announced as determined.

The second round will call back the top 10 for the Handy Round, which will be judged on performance, jumping style, quality, handiness and brilliance of pace. Handiness is defined as ground saving movement without adversely affecting performance or style. This round is likely to include tests such as rollbacks, hand gallops, and trot fences as deemed appropriate for each class. A base score will be given by each judge for an averaged second round score. One (1) bonus point will then be added to the base score for each high option attempted regardless of refusal, rail down or loss of good jumping style. The final scores from the first and second round will be combined for a total score. Both classes will pin through 8th place.

RCHJA September 2025 Class List

FEATURED CLASSES (AND FUN)

(600) Frankly My Derby – *Sponsored by the Yaldir-Costello Family.* Limited to junior & amateur horse/rider combinations who are not jumping above 2'3" at the same show. Base fence height offered at 2' with 2'3" high options.

(601) Hunter Spectaculaire – *Sponsored by the Yaldir-Costello Family.* Open to all horse/rider combinations. Combinations may not cross enter in Frankly My Derby (600). Base fence height offered at 2'6" with 2'9"/3' high options.

Both Hunter Derby classes will host a traditional two round format with a two-judge panel. The first round will be judged on performance, hunter pace, jumping style, quality and movement. A base score will be given by each judge for an averaged first round score. One (1) bonus point will then be added to the base score for each high option attempted regardless of refusal, rail down or loss of good jumping style. Scores will be announced at the conclusion of each round and a cutoff score will be announced as determined.

The second round will call back the top 10 for the Handy Round, which will be judged on performance, jumping style, quality, handiness and brilliance of pace. Handiness is defined as ground saving movement without adversely affecting performance or style. This round is likely to include tests such as rollbacks, hand gallops, and trot fences as deemed appropriate for each class. A base score will be given by each judge for an averaged second round score. One (1) bonus point will then be added to the base score for each high option attempted regardless of refusal, rail down or loss of good jumping style. The final scores from the first and second round will be combined for a total score. Both classes will pin through 8th place.

**Join us during the derbies for a fabulous Garden Party hosted by
BV Equestrian Show Stables!!**

IN HAND CLASSES

(1, 2, 3) Model

To be judged on conformation, athleticism, way of movement, quality, soundness & suitability for the hunter ring. Offered to Horses (1), Ponies (2) & Hunter Breeding (3) for those under the age of 5 years old. Classes may be combined based on entries. Hunter Breeding entrants may be exhibited in a halter & lead rope.

(4) Lead Line

Open to junior riders who are not yet trotting in a show. To be exhibited at the walk on a lead rope by an adult. Riders may cross enter into Walk.

UNDER SADDLE DIVISIONS

(5, 6, 7) Walk

Open to junior & amateur riders who are not trotting at the same show. Division will be comprised of Walk Hunter Under Saddle (5), Walk Equitation (6) & Walk Poles (7). Poles to be exhibited one at a time. Riders may be accompanied by adult supervision in the ring during the classes. Riders may cross enter into Lead Line.

(8, 9, 10) Walk Trot 9 & Under

Open to junior riders ages 9 & under as of December 1 that are not cantering at the same show. Division will be comprised of Walk Trot Hunter Under Saddle (8), Walk Trot Equitation (9) & Walk Trot Poles (10). Poles to be exhibited one at a time. Riders may only cross enter into model classes.

(11, 12, 13) Walk Trot 10-17

Open to junior riders ages 10-17 as of December 1 that are not cantering at the same show. Division will be comprised of Walk Trot Hunter Under Saddle (11), Walk Trot Equitation (12) & Walk Trot Poles (13). Poles to be exhibited one at a time. Riders may only cross enter into model classes.

(14, 15, 16) Walk Trot Adult

Open to amateur riders that are not cantering at the same show. Division will be comprised of Walk Trot Hunter Under Saddle (14), Walk Trot Equitation (15) & Walk Trot Poles (16). Poles to be exhibited one at a time. Riders may only cross enter into model classes.

(17, 18, 19) Open Walk Trot Canter

Open to horse/rider combinations who are not showing over fences at the same show. Division will be comprised of Hunter Under Saddle (17), Pleasure (18) & Poles (19). Poles to be exhibited one at a time at trot or canter. Horse/Rider combination may only cross enter into model classes and pleasure classes.

(20, 21) Pleasure

To be judged on performance, versatility, responsiveness, soundness & manners. Offered to Horses (20) & Ponies (21).

LIMITED HUNTER DIVISIONS

***(50, 51, 52) WT Crossrails**

Open to horse/rider combinations that are not jumping higher than crossrails at that same show. Division will be comprised of two over fence hunter rounds (50, 51) & one under saddle class (52). Horse/Rider combination may only cross enter into model, WT Crossrail Equitation and Puddle Jumper classes.

*(80, 81, 82) WTC Crossrails

Open to horse/rider combinations that are not jumping higher than crossrails at that same show. Division will be comprised of two over fence hunter rounds (80, 81) & one under saddle class (82). Fences & lead changes may be trotted. Horse/Rider combination may only cross enter into model, pleasure, WTC Crossrail Equitation and Puddle Jumper classes.

(53, 54, 55) Beginner Hunter

Fences to be set at 18" – open to all horse/rider combinations that are not jumping over 2' at the same show. Division will be comprised of two over fence hunter rounds (53, 54) & an under saddle class (55). May trot lead changes. No in & outs. No oxers.

*(56, 57, 58) Huntley Equestrian & Grand Prix Short/Long Stirrup Hunter

Huntley Equestrian & Grand Prix are partnering to sponsor your 2025 Short/Long Stirrup Hunter division for the 2025 season!! Fences to be set at 2' – open to junior & amateur riders that have not jumped over 2' at a show. Short Stirrup is limited to riders 11 & under as of December 1. Long Stirrup is limited to riders 12 & over as of December 1. Division will be comprised of two over fence hunter rounds (56, 57) & an under saddle class (58). Division will be split by age group at management discretion. No in & outs. No oxers.

(62, 63, 64) Intermediate Rider Hunter

Fences to be set at 2'3" – Open to horse/rider combinations that are not jumping 2'6" or over at the same show. Division will be comprised of two over fence hunter rounds (62, 63) & an under saddle class (64). No in & outs.

*(68, 69, 70) Children's Hunter Pony

Fences to be set at 2', 2'3" or 2'6" – open to junior riders. Riders may elect the height of their choosing. Division will be comprised of two over fence hunter rounds (68, 69) & an under saddle class (70). No in & outs.

*(71, 72, 73) Low Children's/Adult Hunter

Fences to be set at 2'6" – open to junior & adult amateur horse/rider combinations that are not jumping over 3' at the same show. Division will be comprised of two over fence hunter rounds (71, 72) & an under saddle class (73). Division will be split by age group at management discretion. No in & outs.

*(74, 75, 76) Children's/Adult Amateur Hunter

Fences to be set at 3' – open to junior & adult amateur horse/rider combinations. Division will be comprised of two over fence hunter rounds (74, 75) & an under saddle class (76). Division will be split by age group at management discretion.

OPEN HUNTER DIVISIONS

(59, 60, 61) RCHJA Hunter 2'

Fences to be set at 2'. Division will be comprised of two over fence hunter rounds (59, 60) & an under saddle class (61).

(65, 66, 67) RCHJA Hunter 2'6"

Fences to be set at 2'6". Division will be comprised of two over fence hunter rounds (65, 66) & an under saddle class (67).

(77, 78, 79) RCHJA Hunter 3'

Fences to be set at 3'. Division will be comprised of two over fence hunter rounds (77, 78) and an under saddle class (79).

EQUITATION DIVISIONS

(200, 201, 202) WT Crossrails Equitation

Open to junior and amateur riders who are not jumping higher than crossrails at the same show. Division will be comprised of two over fence equitation rounds (200, 201) & one equitation flat class (202). Horse/Rider combination may only cross enter into model, WT Crossrail Hunter and Puddle Jumper classes.

(203, 204, 205) WTC Crossrails Equitation

Open to junior and amateur riders who are not jumping higher than crossrails at the same show. Division will be comprised of two over fence equitation rounds (203, 204) & one equitation flat class (205). Fences & lead changes may be trotted. Horse/Rider combination may only cross enter into model, pleasure, WTC Crossrail Hunter and Puddle Jumper classes.

(209, 210, 211) Beginner Rider Equitation

Fences to be set at 18" – open to junior & amateur riders that are not jumping over 2' at the same show. Division will be comprised of two over fence equitation rounds (209, 210) & an equitation flat class (211). May trot lead changes. No in & outs. No oxers.

(212, 213, 214) Short/Long Stirrup Equitation

Fences to be set at 2' - open to junior & amateur horse/rider combinations that have not jumped over 2' at a show. Short Stirrup is limited to riders 11 & under as of December 1. Long Stirrup is limited to riders 12 & over as of December 1. Division will be comprised of two over fence equitation rounds (212, 213) & an equitation flat class (214). Division will split by age group at management discretion. No in & outs. No oxers.

(215, 216, 217) Intermediate Rider Equitation

Fences to be set at 2'3" - open to all junior & amateur riders who are not jumping 2'6" or over at the same show. Division will be comprised of two over fence equitation rounds (215, 216) & an equitation flat class (217). No in & outs.

(218, 219, 220) Children's Pony Equitation

Fences to be set at 2', 2'3" or 2'6" – open to junior riders. Riders may elect the height of their choosing. Division will be comprised of two over fence equitation rounds (218, 219) & an equitation flat class (220). No in & outs.

(221, 222, 223) Low Children's/Low Adult Equitation

Fences to be set at 2'6" – open to junior & amateur riders who are not jumping over 2'6" at the same show. Division will be comprised of two over fence equitation rounds (221, 222) & an equitation flat class (223). Division will be split by age group at management discretion. No in & outs.

(224, 225, 226) Children's/Adult Equitation

Fences to be set at 3' – open to junior & amateur riders. Division will be comprised of two over fence equitation rounds (224, 225) & an equitation flat class (226). Division will be split by age group at management discretion.

JUMPER CLASSES

NEW in 2025! Saturday jumper classes will be run as Table II 2(b) (Jump Off). Sunday jumper classes will include Table II, Sec. 1 (Speed) and Table II, 2(b) (Jump Off). Optimum time format to apply where indicated.

(300, 301, 302) Puddle Jumper Crossrails

Fences to be set as cross rails.

Open to all riders. **Division will run under an optimum time format.** No combinations or oxers.

(303, 304, 305) Beginner Jumper .55m

Fences to be set at .55m

Open to all riders. **Division will run under an optimum time format.** No combinations or oxers.

(306, 307, 308) Novice Jumper .65m

Fences to be set at .65m.

Open to all riders. **Division will run under an optimum time format.** No combinations or oxers.

(309, 310, 311) Modified Jumper .75m

Fences to be set at .75m.

Open to all riders. **Division will run under an optimum time format.** No combinations.

*(312, 313, 314) Hopeful Jumper .85m

Fences to be set at .85m. Open to all riders.

*(315, 316, 317) Training Jumper .95m

Fences to be set at .95m. Open to all riders.

*(318, 319, 320) Open Jumper 1m

Fences to be set at 1m. Open to all riders.

MEDAL CLASSES

*(400) The Reinhard Family Memorial Medal – ***in honor of Tom and Lauren Reinhard***

Fences to be set at 2' – medal class open to all junior & amateur horse/rider combinations who are not jumping over 2'3" at that same show. Riders to show over a full over fences course followed by a test of the top 6 riders. Test may be over fences or on the flat at the judge's discretion.

*(401) SEMF Low Child/Adult Qualifier

Fences to be set at 2'6" – medal class open to all junior & amateur horse/rider combinations who are not jumping over 2'9" at the same show. Riders to show over a full over fences course followed by a test of the top 6 riders. Test may be over fences or on the flat at the judge's discretion.

*(402) SEMF Child/Adult Qualifier

Fences to be set at 3' - medal class open to all junior & amateur horse/rider combinations. Riders to show over a full over fences course followed by a test of the top 6 riders. Test may be over fences or on the flat at the judge's discretion.

WARM UP CLASSES

(500, 501, 502, 503, 504, 505, 506) Warm Up – un-judged round to be performed at the beginning of entered division. Horse/rider combination is limited to one warm up round up per ring/per day of competition. *Warm up class should be selected to align with corresponding division schedule by choosing the warm up that runs prior to your division, not after.*

****SOUTHEAST MEDAL FINALS SANCTIONED EVENT****

Comparable medal, equitation, hunter & jumper classes where the specifications & height are the same or similar will count towards qualification

