

iSMART | MANDRIL | CIVET | Uncage Your Data

Why CIVET ?

Because it provides a realtime analysis and network monitoring capability that is limitless. It's a game-changer that **provides real-time TDL analysis** is **easy to use**, and can handle **all aspects of TDL interoperability analysis**, whether at the BIT level or the "System-of-Systems" level performing requirements verification/certification tasks. CIVET¹ is used by both mainstream operational programs and next generation developmental programs to analyze and better understand communication system interoperability. Why is CIVET the product of choice?

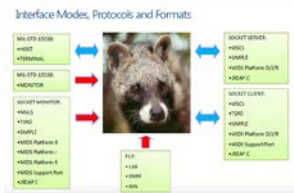
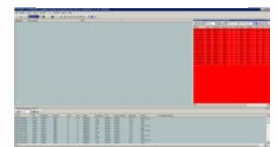
- **Actionable Decode** - both Link-11 and Link-16 Messages, down to BIT level in human readable or HEX format - so developers can use for platform debugging, and operators for a real-time systems understanding, etc.
- **Real-time Automated Analysis** - compares network Tx/Rx messages to message standard in real-time, so you know if messages are causing a network breakdown
- **Analyzes network** – Easy ID of which STN(s) transmit anomalies such as Undefined labels and sublabels, illegal and undefined field values, non-zero spare bits, Words out of sequence, Undefined Packing Limit, Multiple Initial Words, Multiple Extension Words, Multiple Continuation Words, Undefined Words, Message Type Validity, Message Field Errors, No Initial Word, Message Length Indicator errors
- **Operator Auto Alert** - filter millions of messages for Program/Mission Specific priorities including: target specific messages, Source, Slot block, NPG, Net Number, Slot Packing Level, Message Label, Message Sub-Label, Word Label, Word Number, Source Track number, Track Number (TN) / TN Addressee (as appropriate), and more
- **Central Data Feed** - Multiple SERVER and CLIENT SIMPLE ports connect to other test equipment with an array of forwarding options between connections for Multi-Network and multiple test station (Host, Simulator, JREAP, etc) connectivity.
- **On the Fly-Integrated Network design** - Allows quick and easy network design (eg NETMAN) to be built for supporting test activities. Fully featured from Network Design Parameters to Mission Specific and Platform Specific parameters and can produce terminal ID Load file. Individual terminal load files can be edited directly and updated to suit the test conditions.
 - How often have you been half way through a test and realized that one of the terminal load files doesn't give enough slots to transmit the test scenario ?
 - With the inbuilt IDPF you can modify the ID loads on the fly in 5 minutes
- **Tracks 2-D or 3-D** plays live or replays recorded data with a terrain background:
 - Play or Fly the mission – Play any or all of the tracks. Fly with them or become one of them !
 - Analyze Radar intervisibility, radar masking, LOS connectivity etc.
- **Many Interfaces** - Connectivity to MIDS terminals via MIL-STD-1553 (both Host and Terminal emulation modes*) and Ethernet, MIDS Support Port connectivity, passive monitoring via MIL-STD-1553* and Ethernet
- **Record and Replay Everything** - Record data on any, or multiple test rigs then replay into different platforms to reproduce the actual platform - faults / issues /verbal comm, etc.
- **Users** - Include both operational and next generation developmental programs as well as the companies that develop them and Ranges that verify performance: F-35, B-1B, E-3, USMC MCTSSA, Lockheed Martin, Boeing, and more. Our customers use CIVET to simplify, automate, and improve the accuracy of Data Link and Network Analysis with both simulated and live data that, with MANDRIL, comprise **over 70 formats from Link 16, Link 11.**



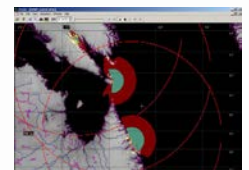
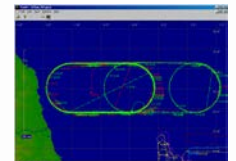
Message Decode



Auto - Alerts

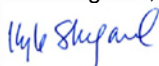


Network Design



Why not work more efficiently by using the most technically rigorous, proven, yet easiest to use interoperability analysis tool on the market today? Contact us and we will help you uncage your data and join the mainstream with CIVET.

Kind Regards,



Kyle Shepard
 President, Interoperable Systems Group, Inc.
 (858) 488-5800, kyle.shepard@interoperablesystems.com

1 – Combined Interoperability Validation and Evaluation Tool – CIVET-Uncage Your Data