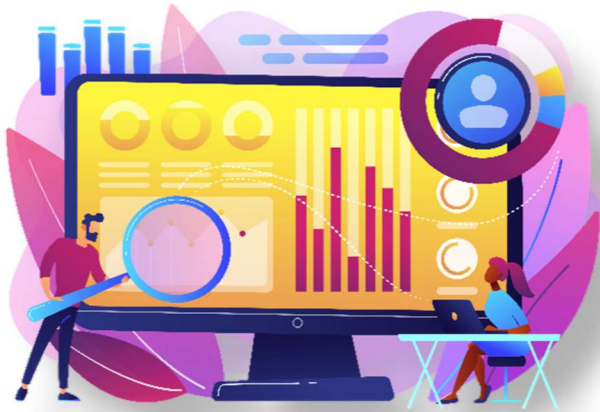




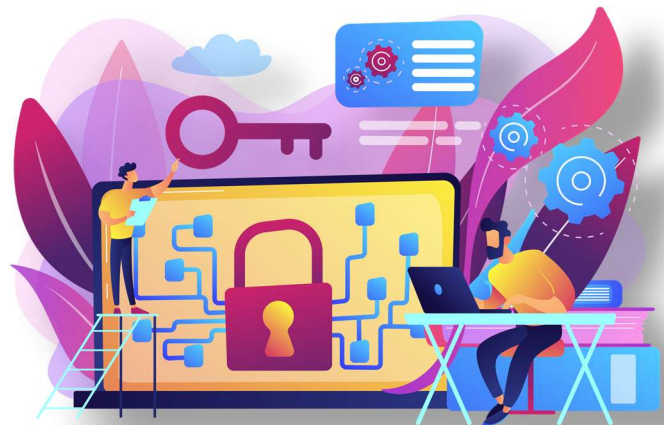
Continuous Protection for Your Business

When your network fails, it can take time to get things working again. However, by continuously attending to small issues as they arise, we can significantly reduce the risk of disasters in the future.



- **Asset monitoring is a bundle of specialized software that helps keep devices up to date, alerts IT support of issues on the network, and provides detailed information that can save your business time & money on new technology purchases.**

- **When the server is down, time is of the essence and knowledge is power. Asset monitoring makes solving IT problems easier for network professionals, resulting in quicker service times.**



Empowering organizations of all types with automated maintenance cycles, detailed technical analysis, & rapid response to critical network issues. We take care of the IT, so you can focus on what is most important, your business.



Seamlessly Manage IT Security, & Support

Protect your complex network with essential support capabilities & flexible reporting that can fulfill the essential functions of any business environment

- Create a more secure and reliable IT environment by utilizing automated updates for operating systems, customary software applications, and critical network infrastructure.



- Monitor all your devices in real-time, instantly flagging potential issues, and leveraging powerful tools to resolve most problems automatically, while working congruently, to provide our technicians with useful diagnostic information.

Who's watching your business when you're not there?

