

104th Annual



GALLUP

Inter-Tribal Indian
Ceremonial

Association

July 31 - August 10, 2026

Arts & Crafts Premium Book



Gallup Inter-Tribal Indian Ceremonial Association

206 W Coal, Gallup, New Mexico 87301

(505) 863-3896

Email: gallupceremonialoffice.com

Website: www.gallupceremonial.com

GALLUP

104th Annual
Inter-Tribal Indian
Ceremonial

Through multicultural events and other educational programs, Ceremonial encourages advanced understanding between Indian and non-Indian people bringing communities together in sharing and celebration.

All rules covered in this premium book pertain to all items displayed and offered for sale in the Juried Art Show and the Indoor market. As an exhibitor dealer or collector of Indian Hand Made items, you must be aware of all rules pertaining to the premiums you enter and the products you offer for sale. You will be held responsible for any infraction or violations of the rules and regulations.



Contents

Ribbons, Prizes & Awards.....	3
Premium Class.....	2
Deadlines & Exhibit Hall Schedules.....	4
Procedures Policies & Rules.....	5-6
Poster Selection Process	7
Ceremonial Judges.....	7

Ribbons, Prizes and Awards

Adult & Youth Prize awards to be determined

Adult Entries:

Best in Show:
Best in Class:
Best in Category:
First Prize:
Second Prize:

Youth Entries:

Best in Class:

Best in Category:
First Prize:
Second Prize:



Special Memorial Awards

Jeanneen Underwood Memorial (Eligible for any class)\$250
Paul E. Graves Memorial (Eligible for any class) \$250
Stella and Chunky Tanner Memorial (Lapidary) \$250
Irene Fraizer (Eligible for any class)\$125
Mary Naranjo (Eligible for any class)\$125
Edward S. Curtis Memorial - Eligible for Photography \$250
Harry B. Johnson - Eligible for Painting \$250.00
Russ Griswold - Eligible for any class \$250
Kathy Dawn Tanner - Eligible for Pottery \$250.00
Lucy Harris - Eligible for any class \$250
Keith Wallace - Eligible for any class \$250

Special Memorial Awards recognize deceased people who supported the Ceremonial Association; Directors, Employees, Art Patrons, Craftsmen, Collectors or Volunteers over a period of many years.

If you are interested in sponsoring a person for a memorial ribbon in 2027, please contact Joyce Graves at 505-862-1457 for information.

PREMIUM CLASSES

**NOTE: NEW POLICY FOR PAINTING SIZE.
All paintings must not exceed 48 inches in
width and 60 inches in length.**

CLASS I:WEAVINGS.....	8-9
CLASS II: KACHINA DOLLS & CARVED WOODEN FIGURES.....	10
CLASS III: METAL SMITHING	11-13
CLASS IV: LAPIDARY ARTS	14-15
CLASS V: BASKETS	16
CLASS VI: TRIBAL ARTS	17
CLASS VII: YOUTH ENTRIES	18-19
CLASS VIII: PAINTINGS & SANDPAINTINGS.....	20-21
CLASS IX: SCULPTURES.....	22
CLASS X: POTTERY.....	23-26
CLASS XI:PHOTOGRAPHY.....	27

DEADLINES

All entries submitted to the juried arts and crafts contest will be accepted from

1 PM until 6:00 PM, Friday, July 31st, 2026

8 AM until 6:00 PM, Saturday, August 1st, 2026

At the Exhibit Hall at Red Rock Park
825 Outlaw Road, Church Rock, NM 87311
(Call 505-863-3896 for directions or information)

Exhibitors, dealers and craftsmen may pick up unsold entries on

Sunday, August 9th, 2026 from 3-6 PM

Or Monday, August. 10th, 2026 from 9 AM-2PM

NO EARLY CHECKOUT!!

Artist prize checks may be picked up at checkout time Sunday, August, 9th from 3-6 PM and Monday, August 10th from 9AM-2PM. Checks may also be picked up after the conclusion of the show at the Gallup Inter-Tribal Indian Ceremonial Association Office 206 W Coal Ave., Gallup, NM 87301 or call (505) 863-3896 or (505) 862-1457.

Checks for items sold will be available at the Ceremonial office 2-3 weeks after the event.

Exhibit Hall is open to the public.

OPENING NIGHT

Wednesday, (August 5th) 6 PM – 10 PM

Thursday (August 6th) 10AM - 6 PM

Friday (August 7th) 10 AM- 8PM

Saturday(August 8th) 11AM - 8 PM

Sunday (August 9th) 10AM - 1 PM

Exhibitors, dealers and craftsmen may pick up unsold entries on Sunday, August 9th from 3 PM - 6 PM or Monday, August 10th from 9 AM - 2 PM

PROCEDURES, POLICIES, & RULES

1. Only the handmade works of Indian Artists may be entered for judging or exhibited or offered for sale on the premises. Any items entered that are not Native American hand-made will be removed from judging and deemed ineligible for judging or sale.
2. By the New Mexico Laws of 1978, Section 30-33-3, Indian Artists may be asked to prove Indian heritage by either Certified Enrollment Documents or by Certificate of Degree of Indian Blood (CDIB). Commercial Exhibitors must be able to provide documentation of all artists represented in their entries or booth displays.
3. Prohibitions: Specifically prohibited from the Inter-Tribal Ceremonial are tee shirts, offset prints, greenware pottery and other mass-produced items.
4. All items entered for the Prize Competition must have been completed by the artist / craftsman since the last Ceremonial of 2025.
5. All exhibitors must sign their computer entry forms as Certification of Authenticity.
6. All items entered for competition must have the maker's name included on the entry tag and Computer Form to be accepted for judging. Entry tags should contain as much information as possible including technique, theme, title, and types of material used. Ceremonial prefers that natural materials which are used shall be given preference in judging. Stones that have been treated or enhanced should be clearly designated as such. Natural stones shall receive judging preference.
7. Ribbons from other shows and competitions will not be accepted or displayed.
8. No change will be made as to the availability for sale and/or the sales price of any item after it has been submitted for judging.
9. All entry tags must be completed and firmly attached to the article entered either before or at the arrival for check-in.
10. The Ceremonial Association will issue all Prize Checks, to the best of its ability, payable directly to the artist or craftsman. Therefore, Social Security numbers must be provided with checks of \$600.00 or more.
11. "Not For Sale" entries will pay an entry fee of **\$100.00** per item, payable upon entry with the only exception being Juvenile entries, which will not be charged. "Not For Sale" entries will not be permitted to participate in judging at higher levels than First Prize.
12. The Ceremonial Association will not be responsible for packing materials or jewelry cases received with entries.

PROCEDURES, POLICIES, & RULES (continued)

13. Exhibitors are limited to five (5) entries in any one premium number.

14. Checkout Procedure: Exhibitors must present their copy of the computer Entry Form to the clerks at the computer center. Bring your own packing supplies at this time.

15. Entries not picked up at the Exhibit Hall by 2:00 PM on Monday, August 10th, 2026 will be transported to the Ceremonial Office. Items will be available upon appointment made with the office.

If submitted artwork is not picked up by Tuesday September 21st, 2026, Artwork will become property of The Gallup Inter-Tribal Indian Ceremonial Association.

16. The Exhibits Committee Director is vested with full authority for the enforcement of all Rules, Policies and Regulations governing exhibits and entries. Any appeal of decisions must be made in writing and submitted to the Ceremonial Association.

17. The Association shall have the right to use photographs or other reproductions on any item entered for judging for such purposes as it may deem appropriate without obligation to the artist, craftsman or exhibitor of the item. Such purpose shall benefit only the Association in conjunction with advertising, educational outreach or promotion of the Association.

18. If the total of items submitted in any one class exceeds the display area available, the judges and the Exhibits Committee Director will determine which items shall be displayed first, with sold items being replaced by those not previously displayed. This decision is final and without appeal.

19. SPECIAL NOTICE: The Association will reject any entries which include animal parts not identifiable as legal under the Endangered Species Act, the Migratory Bird Treaty Act and/or the Bald Eagle Act as specified in the United States Code of Federal Regulations.

20. Purchasers may take their items at the time of purchase with the exception of Best in Show or Best in Class items.

21. 25% of the purchase price for artwork will be retained by the Ceremonial to pay for artist awards and other Ceremonial expenses.

CEREMONIAL JUDGES

Judging will take place on Sunday, August 2nd at Red Rock Park. Each year, the Exhibits Committee selects a panel of qualified individuals to review and judge all entries received in the judged portion of our arts and crafts show. Judges are from all facets of the Native American Art world, including artists, gallery owners, traders, museum curators and art collectors. Selections are based on the following criteria:

- Working knowledge of the raw materials, processes, methods and tools used in creating the items in the class being judged.
- Understanding of history, development, and contemporary direction of the class being judged
- Willingness to serve on a volunteer basis.

The Association will attempt to avoid the selection of anyone who may have a conflict of interest or could benefit by awarding any prizes. An effort is also made to involve new judges on a regular, rotating basis. Selected Native Americans must be willing to refrain from entering their artwork when acting as a judge, and if anyone else enters their works, they must abstain from any judging involving these pieces.

Without the generous services of these individuals, we could not hold this juried art show and maintain the premiere prestige position that we enjoy. To them, we offer our heartfelt appreciation.

Poster Selection

All Items entered will be eligible for selection for next year's Poster/T-shirt, with the exception of "Not for sale" items.

The Gallup Inter-tribal Indian Ceremonial will purchase the selected poster item.

CLASS I: WEAVING

Category A1:

Hand-Spun, Native Wool, Natural Colors

Premiums

101 Less than 15 square feet

102 15 to 45 square feet or larger

Category A2:

Premiums

Two Grey Hills or similar styles with processed and pre-dyed wool

111 Less than 15 square feet

112 15 square feet or larger

113 Any Tapestry 80 threads or more per vertical inch, hand-spun or machine-processed wool 2' x 3' or bigger

Category B1:

Hand-Spun, Native Wool, Natural Dyes (plant) Includes Wide Ruin, Crystal, Burntwater, Chinle, Two Grey Hills and similar styles.

and other styles.

Exhibitor or weaver must certify in writing that dyes are true natural.

Premiums

121 Less than 15 square feet

122 15 square feet or larger

Category: B2

Natural-like Dyes, Synthetic Dyes or Plant-Dyed Machine-Spun and Pre-dyed Wool

Premiums

131 Natural-Like Dyes, less than 15 square feet

132 Natural-Like Dyes, 15 square feet or larger

133 Any Tapestry 80 threads per inch natural

Category C:

Synthetic Dyes or Plant-Dyed

Machine-Spun and Pre-Dyed Wool

Includes synthetically dyed wool of predominating regional styles, such as Ganado Red, Storm, Teec Nos Pos, outline and natural-like dyes and other styles.

140 Red Rug, less than 15 square feet

141 Red Rug, 15 to 45 square feet

142 Chief Rug, less than 15 square feet

143 Chief Rug, 15 square feet or larger

144 Teec Nos Pos Rug, less than 15 sq ft

145 Teec Nos Pos Rug, 15 sq ft or larger

146 Any Raised Outline Rug

147 Storm Pattern Rug, less than 15 sq ft

148 Storm Pattern Rug, 15 Sq Ft or larger

149 Any Synthetic-Dyed Tapestry, 80 or more threads per Vertical Inch

150 Any Reproduction Design Rugs

Category D:

Pictorial Processed wool, synthetic dyes may be used in this category

Premiums

161 Pictorial Rug, less than 15 square feet

162 Pictorial Rug, 15 square feet or larger

163 Yei or Yei'bechai Rug, less than 15 square feet or larger

164 Yei or Yei'bechai Rug, 15 square feet or larger

165 Sandpainting Rug, less than 15 sq ft

166 Sandpainting Rug, 15 square feet or larger

CLASS I: WEAVING Continued

Category E:

Miscellaneous Types: may be processed wool, synthetic dye

Premiums

- 172 Round Rug or shaped variations
- 173 Double-Faced or Twill Rug, any size
- 174 Saddle Blanket, single or double size
- 176 Multi-Pattern Rug, any size
- 177 Germantown Reproduction Rug, any size
- 178 Large Rug, any technique or style, over 45 square feet

Category F: Innovations

Premiums

- 184 Any Innovative weaving
- 185 Woven Goods, Wool or Cotton: Kilts, Dresses, Vests or Shirts
- 186 Woven Goods, Wool or Cotton; Sashes or Belts
- 187 Looms or Weaving Tools
- 188 Woven Goods, Wool or Cotton; Bags or Purses
- 189 Dye Charts

Category G: Miniature Weaving

Premiums

- 195 Any rug or tapestry less than 6" x 6" (36 square inches)
- 196 Any rug or Tapestry less than 12" x 12" (144 square inches) but larger than Premium #195 Requirements
- 197 Any set of miniature weaving individually less than 12" x 12" (144 square inches)

CLASS II: KACHINAS & CARVED WOODEN FIGURES

Note: Kachinas with illegal feathers will not be accepted!

Note: There are several acceptable spellings for the word Kachina: Katsina. For our purposes, we will use Kachina.

All entries must be made primarily of carved wood. All measurements shall be determined from the bottom of the feet to the top of the head, including tablitas, feathers, etc.

Figures carved from one piece will be given special consideration.

Category A: Kachina Dolls

Concept of Cottonwood. Open to pueblo carvers only. Includes bare wood, stained, clear finish and painted figures. Koyemsi are included in this category.

Premiums

201 Figures less than 4" in height

202 Figures over 4", but less than 12" in height

204 Figures over 12" in height

205 Figures, set consists of individual kachinas that appear together in a ceremony. They need not be mounted on a common base.

Category B: Non-Kachina Figures

Carved of Cottonwood. Open to pueblo carvers only. Includes any clown, Society figure or any other ceremonially associated Pueblo figure such as the Koshare, Buffalo Dancer, Snake Dancer, Butterfly Dancer, etc.

Category B: Non-Kachina Figures

Cont.

Premiums

211 Figure less than 4" in height

212 Figure over 4", but less than 12" in height

214 Figures over 12" in height, set

215 Figures, set, same requirements as premium #205

Category C: Concept of Cottonwood

Carved of Cottonwood. Open to pueblo carvers only. Includes Kachina sculpture, Kachina carved without feet, dioramas, Kachinas with animals, etc. and groups of Kachinas that do not appear together ceremonially, combined into a single entity.

Premiums

221 Figure less than 4" in height

222 Figure over 4", but less than 12" in height

223 Figure over 12"

224 Figures, set, same requirements as #205

Category D: Non-Pueblo Figures

Open to non-pueblo carvers only.

Includes any figure ceremonially associated with the carver's tribe, such as Navajo Yeibichai and Yei, Apache Gahn Dancers, and others.

Premiums

231 Figure 4" or less in height

232 Figure over 4", but less than 12" in height

234 Figures over 12" in height,

235 Figure, set sculpture or diorama, any size

236 Figure, set (a set consists of individual figure that appear together in a ceremony) They need to be mounted on a common base

CLASS III: METAL SMITHING

BASIC RULES OF ENTRY AND STIPULATIONS

CONCEPT, DESIGN, and EXECUTION demonstrating mastery of metal smithing as an art are the criteria on which awards will be given in this class. Process, craftsmanship, and finish are equally as important. Type or quality of stone will not be considered when judging the craftsmanship of each piece, however, using natural stones, coral, and other unadulterated gems is encouraged. Entries in the class must be manufactured using precious metals such as: Silver, 14k Gold (or finer), Platinum, or Palladium, unless judges decide otherwise at check-in, depending on craftsmanship and ability to win. Entries incorporating stones need not be cut, or polished by the artist but can have preference if photo and/or video is shown during check-in. Metal quality and maker's mark should be permanently stamped or engraved into each entry.

Matched sets must consist of 2 or more items.

ENTRY TAG MUST INCLUDE: Metal Type and quality, stone identification, technique, and theme (symbolism). All collaborating artists must be named as "Maker".

Category A: Tufa Cast (Tufa or Cuttlefish)

Tufa entries must be carved by the metal smith themselves in either Tufa Stone, or cuttlefish. Accompanying molds from entry production (whole or broken) can be given judging preference. Entries will be judged on the quality of the cast, the carving, as well as the craftsmanship, and finish of the entry. These entries may include: bezel, wire, sheet, Fabricated beads, and/or fabricated bolo tips.

Premiums

300 Belt (Man or Woman)

301 Belt Buckle

302 Bolo Tie

303 Bracelet, Cuff or Link Style

304 Buttons, 4 or more alike

305 Earrings

306 Necklace or Choker

307 Pin or Brooch

308 Ring (Man or Woman)

309 Men's Matched Set

310 Woman's Matched Set

311 Watch Bracelet or Watchband

312 Squash Blossom

Category B: Lost Wax and Sand Cast

Lost wax entries must be cast from original hand carved wax or handmade items which are then molded and assembled later. Showing the original mold upon entry for your piece shall be given preference. Sand cast items must be cast from original handmade pieces, carved wax, printed design, or from items in nature. Your entry will be judged on the quality of the cast, as well as the craftsmanship and finish of the entry. Once assembled if applicable the majority of the piece must be made from either of these types of cast. Bezel can be used in the entry. Complete cast entries can be given preference in judging.

Premiums

- | | |
|----------------------------------|---------------------------------|
| 317 Belt (Man or Woman) | 324 Pin or Brooch |
| 318 Belt Buckle | 325 Ring (Man or Woman) |
| 319 Bolo Tie | 326 Men's Matched Set |
| 320 Bracelet, Cuff or Link Style | 327 Woman's Matched Set |
| 321 Buttons, 4 or more alike | 328 Watch Bracelet or Watchband |
| 322 Earrings | 329 Squash Blossom |
| 323 Necklace or Choker | |

Category C: Hand Fabricated

All fabricated items must be crafted starting from the alloy grain of your choosing or CLEAN scrap. The sheet and/or wire fabricated will be judged on the quality of which it was made, as well as the quality of the craftsmanship and finished of the entry. NO SHEET, WIRE, OR BEADS PURCHASED AS STOCK FROM A SUPPLY COMPANY WILL BE ALLOWED.

SHOWING PICTURES OR VIDEO OF FABRICATING PROCESS UPON ENTRY WILL BE GIVEN PREFERENCE IN JUDGING.

Premiums

- | | |
|----------------------------------|---------------------------------|
| 334 Belt (Man or Woman) | 341 Pin or Brooch |
| 335 Belt Buckle | 342 Ring (Man or Woman) |
| 336 Bolo Tie | 343 Men's Matched Set |
| 337 Bracelet, Cuff or Link Style | 344 Woman's Matched Set |
| 338 Buttons, 4 or more alike | 345 Watch Bracelet or Watchband |
| 339 Earrings | |
| 340 Necklace or Choker | |

Category D: Pre-Manufactured Sheet and Wire

All stock purchased from a distributor may be used in this category. Entries will be judged on the craftsmanship and finish of each entry.

Premiums

- | | |
|----------------------------------|---------------------------------|
| 351 Belt (Man or Woman) | 359 Pin or Brooch |
| 352 Belt Buckle | 360 Ring (Man or Woman) |
| 353 Bolo Tie | 361 Men's Matched Set |
| 354 Bracelet, Cuff or Link Style | 362 Woman's Matched Set |
| 355 Buttons, 4 or more alike | 363 Squash Blossom Necklace |
| 356 Earrings | 364 Watch Bracelet or Watchband |
| 357 Gato | 365 Beads |
| 358 Necklace or Choker | |

Category E: Overlay and Applique

Fabricated stock with photos and/or video of process shown at check-in can be given preference. Entries will be judged on the complexity, cleanliness of each design and finish. Multiple alloys can gain preference while judging.

Premiums

- | | |
|----------------------------------|-------------------------------------|
| 369 Belt (Man or Woman) | 375 Necklace or Choker |
| 370 Belt Buckle | 376 Pin or Brooch, Pendant or Cross |
| 371 Bolo Tie | 377 Ring (Man or Woman) |
| 372 Bracelet, Cuff or Link Style | 378 Men's Matched Set |
| 373 Buttons, 4 or more alike | 379 Woman's Matched Set |
| 374 Earrings | |

Category F: Flatware, Holloware, Boxes, Etc.

Open to all techniques of manufacture.

Premiums

- | | |
|--|---------------------------------------|
| 383 Plates, Bowls, Trays and Ashtrays, unlidded | 387 Other non-wearable products |
| 384 Seed Pots | 388 Other wearable products |
| 385 Boxes with Lids | 389 Miniatures-Jewelry or Misc. Items |
| 386 Metal Smithing, Flatware, Holloware, Bridles | 390 Hair Pieces and Service Pieces |

G. Innovative

This category is for new techniques to the Native American market. All jewelry making techniques apply. Some examples are Keum-boo, Mokume Gane, engraved, hand engraved gem setting, etc. Let your imagination out of the box!

Premium

393. All items of innovation

CLASS IV: LAPIDARY ARTS

BASIC RULES OF ENTRY AND STIPULATIONS:

Concept, design and execution demonstrating mastery of lapidary (stone cutting, shaping and polishing) as an art, is the criteria on which awards will be given in this class. Entries in this class must be mounted in precious metals: sterling silver and 14 karat gold or finer, platinum and palladium. Metal quality should be permanently stamped into the entry as well as the maker's mark whenever possible. All mounting must be well-constructed and finished. Bezels should be well-soldered at all joints. Mounting quality may be considered as a prize qualifying factor by the judges. All stones incorporated in the entries must be cut, shaped, polished and mounted by the artist. Pieces using natural stones and coral and other unadulterated gems and shell will be given preference in the judging. Stone identification as to a) material type, b) origin, and c) quality must be completed on all entry tags. When two or more lapidary artists have collaborated in a single entry, all artists must be named as "maker". Matched sets must consist of three (3) or more elements. One pair of earrings or cuff links constitutes only one element. Judging preference may be given to the set containing the highest number of elements.

Category A: Channel Inlay

Predominant stone design elements must be contained within a bezel and are usually separated by metal strips.

Premiums

- 401 Belt (Man or Woman)
- 402 Belt Buckle
- 403 Bolo Tie
- 404 Bracelet, cuff style
- 408 Earrings
- 409 Necklace or choker
- 411 Pin or brooch, Pendant Or Cross
- 413 Ring (Man or Woman)
- 414 Squash Blossom necklace
- 415 Watchband or watch bracelet
- 416 Men's Bolo/ Buckle Set
- 417 Woman's Necklace & Set of 2 or more

Category B: Mosaic Inlay

Stone design elements are predominantly constructed stone to stone and not separated by metal strips and are usually finished flush with the metal mounting.

Premiums

- 431 Belt (Man or Woman)
- 432 Belt Buckle
- 433 Bolo Tie
- 434 Bracelet, Cuff style
- 440 Earrings
- 441 Necklace or Choker
- 442 Pin, Brooch, Pendant, or Cross
- 443 Ring, Woman or Man
- 444 Squash Blossom Necklace
- 445 Watchband or Watch Bracelet
- 446 Men's Bolo/ Buckle Set
- 447 Woman's Necklace & Earring Set
- 448 Misc. Items

CLASS IV: LAPIDARY ARTS (continued)

Category C: Cluster

Stones are to be individually cut to the cabochon style. Each stone is mounted singly within a bezel.

Premiums

- 454 Belt (Man or Woman)
- 455 Belt Buckle
- 456 Bolo Tie
- 457 Bracelet, Cuff style
- 458 Earrings
- 459 Necklace or Choker
- 460 Pin or Brooch, Pendant or Cross
- 461 Ring (Man or Woman)
- 462 Squash Blossom Necklace
- 463 Watchband or Watch Bracelet
- 464 Men's Bolo/ Buckle Set
- 465 Woman's Necklace & set of 2 or more
- 466 Misc. Items

Category D: Needlepoint

Stones are to be individually cut in the cabochon style, usually twice or more as long as the width of the stone, typically pointed at both ends, or may be square cut at both ends. Each stone is individually mounted within a bezel.

Premiums

- 471 Belt (Man or Woman)
- 472 Belt Buckle
- 473 Bolo Tie
- 474 Bracelet, Cuff style
- 478 Earrings

Category D: Needlepoint Continued

Premiums

- 479 Necklace or Choker
- 481 Pin or Brooch, Pendant or Cross
- 482 Ring (Man or Woman)
- 483 Squash Blossom Necklace
- 484 Watchband or Watch Bracelet
- 485 Men's Bolo/Buckle Set
- 486 Woman's Necklace & set of 2 or more
- 487 Misc. Items

Category E: Lapidary Arts Not Mounted

Premiums

- 493 Fetish Carving, less than 3", largest dimension
- 494 Fetish Carving, 3" to 6", largest dimension
- 495 Fetish Carving over 6"
- 496 Fetish Necklace, any length
- 497 Heishi
- 498 Jaclo
- 499 Stone Choker, other than Heishi

CLASS V: BASKETS

Classification is based on form and technique. Miniature baskets must be less than 3" in diameter, and or height.

Category A: Coiled Technique

Premiums

- 501 Navajo, Ute, or Paiute, Traditional design, 3" to 15"
- 502 Navajo, Ute, or Paiute, Traditional design over 15"
- 503 Navajo, Ute, or Paiute, Pictorial design, 3" to 15"
- 504 Navajo, Ute, or Paiute, Pictorial design, over 15"
- 505 Hopi, 3" to 15"
- 506 Hopi, over 15"
- 507 Effigy Baskets
- 508 Non-traditional Geometric design, 3" to 15"
- 509 Non-traditional Geometric design, over 15"
- 510 Coiled Sets
- 511 Other Coiled Technique

Category B: Wicker Technique

Premiums

- 521 Any Hopi
- 522 Any Apache

Category C: Miscellaneous Techniques

Premiums

- 531 Any split stitch, yucca
- 532 Any item, plaited techniques
- 533 Any item, braided
- 534 Any item, horsehair
- 535 Any item, other techniques
- 536 Other miscellaneous techniques

Category D: Miniature Baskets

Items less than 3 " in diameter and or height

Premiums

- 540 Any item, coiled
- 541 Any item, horsehair
- 542 Any other miniature basket

CLASS VI: TRIBAL ARTS

All items must be Indian handmade.
Native-tanned hide will be given preference
over commercial tanning in this class.

Category A: Wearing Apparel and Accessories

Premiums

- 601 Bag or Purse, beaded, buckskin or plain
- 602 Beaded earrings
- 603 Beaded Bracelets or leather with metal or stones
- 604 Belt, Buckle, leather beaded, or plain
- 605 Moccasins, beaded or plain, with or without leggings
- 608 Dresses, cloth, not beaded
- 609 Dresses, traditional, plain or with stones or silver or beading
- 612 Fancy work and sewing, Indian design, any style- wraps, shawls, bags, purses
- 613 Gloves or Hats, buckskin or other material, plain or beaded
- 616 Necklace or Bolo beaded
- 618 Shirt, coat, vest, or buckskin, plain or beaded or ribboned or applique
- 621 Evening Wear/Formal
Wear/Contemporary
- 622 Misc.(quilts or any other items)

Category B: Ceremonial Items

Premiums

- 643 Fans, plain or beaded
- 645 Headdresses, Bonnets
- 646 Masks, Tablitas
- 647 Musical Instruments, Drums, Rattles, or Flutes
- 648 Peace Pipes
- 649 Peyote Box or Set
- 657 Misc.

Category C: Dolls and Utilitarian Items

Premiums

- 671 Pouches
- 673 Bridle, non-precious metal
- 675 Any Cradleboard
- 678 Dolls, cloth or hide, beaded or quilled, handstitched, detailed
- 679 Dolls, fabric/Pendelton
- 680 Knives or Tomahawks or Bow and Arrow
- 681 Northwest coast items not fitting any other premium
- 682 Quiver, rawhide or buckskin, sinew sewn, plain or beaded or Scabbard, beaded or plain or Shields
- 685 Misc. (Buildings, etc., Clocks, Wall Hangings, Furniture)

Category D: Quilts

- 690 All quilts

CLASS VII: YOUTH

Makers must be 18 years of age or younger. In addition to the usual Entry Tag information, the age of the maker must be included. There will be NO ENTRY FEE for Not for Sale Entries (Youth Class Only). Not for Sale entries will not compete for awards higher than first prize. Entries will be judged using the same guidelines as the corresponding adult items.

Category A: Ages 10 and Under

Premiums

- 701 Jewelry, predominantly metal smith technique
- 702 Jewelry, predominantly lapidary technique
- 703 Drawing, pencil or charcoal
- 704 Painting, any medium or subject
- 705 Rug, synthetic (aniline) dye, any wool
- 706 Rug, natural (vegetal) dye, any wool
- 710 Pottery, decorated or undecorated
- 713 Kachina, all
- 715 Baskets, all
- 716 Carvings, wood non-pueblo makers
- 717 Sandpaintings
- 718 Sculpture
- 719 Tribal Arts

CLASS VII: YOUTH Continued

Category B: Ages 11 through 14

Premiums

- 731 Jewelry, predominantly metal smith technique
- 732 Jewelry, predominantly lapidary technique
- 733 Drawing, pencil or charcoal
- 734 Painting, any medium or subject
- 735 Rug, synthetic (aniline) dye, any wool
- 736 Rug, natural (vegetal) dye, any wool
- 740 Pottery, decorated or undecorated
- 743 Kachina, all
- 745 Baskets, all
- 746 Carvings, wood, non-pueblo makers
- 747 Sandpaintings
- 748 Sculpture
- 749 Tribal Arts

CLASS VII: YOUTH Continued

Makers must be 18 years of age or younger. In addition to the usual Entry Tag information, the age of the maker must be included. Exhibitors are limited to five (5) entries per maker for each premium number. There will be NO ENTRY FEE for Not for Sale Entries (Youth Class Only). Not for Sale entries will not compete for awards higher than first prize. Entries will be judged using the same guidelines as the corresponding adult items.

Category C: Ages 15 through 18

Premiums

- 761 Jewelry, predominantly metal smith technique
- 762 Jewelry, predominantly lapidary technique
- 763 Drawing, pencil or charcoal
- 764 Painting, any medium or subject
- 765 Rug, synthetic (aniline) dye, any wool
- 766 Rug, natural (vegetal) dye, any wool
- 768 Rug or tapestry, miniature less than 1 square foot
- 770 Pottery, decorated or undecorated
- 773 Kachina, all
- 775 Basket, all
- 776 Carving, wood, non-pueblo makers
- 777 Sandpaintings
- 778 Sculpture
- 779 Tribal Arts
- 780 Photography Native American Cultural, obvious to the viewer
- 781 Photography - General
- 782 Photography - Graphic Design

Special Youth Award

“The future of
Ceremonial”

CLASS VIII: PAINTINGS

ALL ENTRIES WILL BE JUDGED ON THE ARTIST'S MASTERY OF THE MEDIUM.

All entries must be framed, wired, and in stable condition ready for hanging and must not exceed 60" in length or width. Entries deemed inadequately prepared for safe and stable hanging will not be judged or displayed and the Association will not be responsible for glass breakage on these items.

NOTE: Tape Entry Tags to the upper right hand corner on the back of the entry or hang on entry wire.

Category A: Representational, All Media

This category is defined as realism in which the artist has obtained the most realistic rendition of his/her subject matter.

Premiums

801 Landscape

802 Portraiture

803 Still Life

804 Animal Subjects

805 Representational Style

Category B: Contemporary Style, All Media

This category is defined by abstraction which is either adding to or subtracting subject matter from reality and is not considered representational in the realm of realism. This Best Category includes all abstract paintings. If it is indefinable to other classifications, judges will select the judging category.

Premiums

811 Landscape

812 Portraiture

813 Still Life

814 Animal Subjects

815 Paintings contemporary style, all media, misc.

PAINTINGS (continued)

Category C: Traditional Native American Style, All Media

This category is defined by artwork that was, in the past, very traditional in the field of Native American art forms. It is usually accomplished through the use of non-shaded colors with a single color primary background, such as colored mat board. Examples of artists who used this style in the past are Harrison Begay, Beatien Yazz, Allan Houser and Ha So De.

Premiums

821 Landscape

822 Portraiture

823 Still Life

824 Animal Subjects

Category D: Miniatures

Any Media Entries are defined by size and can be Representational, Contemporary or Traditional as previously defined. The displayed image, excluding the frame, should not exceed 121 square inches (11 x 11 = 121 square inches).

Premiums

831 Landscape

832 Portraiture

833 Still Life

834 Animal Subjects

Category E: Sandpaintings

Sand paintings deemed inadequately prepared for safe and stable hanging will not be judged or displayed. Entries must not exceed 60 inches in length or width, including frame.

Premiums

*851 Ceremonial style is typically a smaller, partial or altered permanent representation of Navajo ceremonial sandpaintings.

852 Non-Ceremonial subject matter

853 Miniatures, any subject, not to exceed 144 sq. inches

CLASS IX: SCULPTURE

All metal sculpture castings must be accompanied by a statement of disclosure and Certificate of Authenticity

Category A: Stone Sculpture

Premiums

901 Stone, under 12", largest dimension

902 Stone, 12 to 24", largest dimension

903 Stone, over 24", largest dimension

CATEGORY B: Metal Sculpture

Premiums

911 Fabrication Metal, under 20"

912 Fabrication Metal, over 20"

914 Cast Metal, under 20"

916 Cast Metal, over 20"

Category C: Clay, Wood, Bone, Misc.

Sculpture Realistic or Impressionistic

Premiums

921 Clay, under 12"

922 Clay, over 12"

923 Wood, under 18"

924 Wood, over 18"

925 Bone

926 Mixed Media, Misc.

927 Sculpture, folk art sculpture, human figure, under 12"

928 Sculpture, folk art sculpture, animal figure, under 12"

929 Sculpture, folk art sculpture, human figure, 12" –larger

930 Sculpture, folk art sculpture, animal figure, 12"-larger

CLASS X: POTTERY

Pottery must be made of native clays, (no green ware), painted or slipped with native clays, and may not be mold poured.

Category A: Traditional Pueblo Undecorated

Premiums

1001 Jars, over 2" largest dimension

1002 Melon bowls, basket bowls & other bowls & plates, any size

1003 Wedding vases, canteens, vases, and traditional shapes not listed, any size

1004 Effigies, figurines, story tellers, and nativity scenes, and sets, any size

Category B: Traditional Pueblo Carved

Does not include sgraffito

Premiums

1010 Jars: over 2", largest dimension

1011 Melon bowls, basket bowls, other bowls and plates, any size

1012 Wedding vases, canteens, vases and traditional shapes not listed, any size

1013 Effigies, figurines, story tellers, nativity scenes, and sets, any size

Category C: Traditional Pueblo Pottery, Painted

Premiums

- 1020 Jars, Hopi, matte or polished surface, over 2", but less than 8" largest dimension
- 1021 Jars, Hopi, matte or polished surface, over 8", largest dimension
- 1022 Jars, Acoma, Laguna, or Zuni, matte or polished surface, over 2", but less than 8" largest dimension
- 1023 Jars, Acoma, Laguna, or Zuni, matte or polished surface, over 8", largest dimension
- 1024 Jars: All other tribes, Pueblos, (excluding Navajo) matte or polished surface, over 2" largest dimension
- 1025 Bowls, basket bowls, and plates, matte or polished surface, any size
- 1026 Wedding vases, canteens, vases and traditional shapes not listed, matte or polished surface, any size
- 1027 Effigies, figurines, story tellers, and nativity scenes, and sets, matte or polished surface, any size

CATEGORY D: NON-TRADITIONAL POTTERY

includes non-traditional shapes, designs, and/or materials, or glazed

Premiums

- 1033 Sgraffito, with or without stones, any color or shape, over 2" largest dimension
- 1034 Jars, over 2" largest dimension
- 1035 Bowls, basket bowls, and plates, any size
- 1036 Wedding vases, canteens, vases and other shapes not listed, any size
- 1037 Effigies, figurines, story tellers, and nativity scenes, and sets, any size

CATEGORY E: MINIATURE POTTERY

Less than 2", largest dimension

Premiums

1043 Traditional jars

1044 Traditional bowls, basket bowls, and plates

1045 Traditional, wedding vases, canteens, vases, and Traditional shapes not listed

1046 Traditional effigies, figurines, story tellers and Nativity Scenes and sets

1047 Sgraffito, any color and combination of techniques

1048 Non-traditional forms

Category F: Navajo Traditional Pottery and Non Traditional

Premiums

1054 Jars, over 2", but less than 8" largest dimension

1055 Jars, over 8" largest dimension

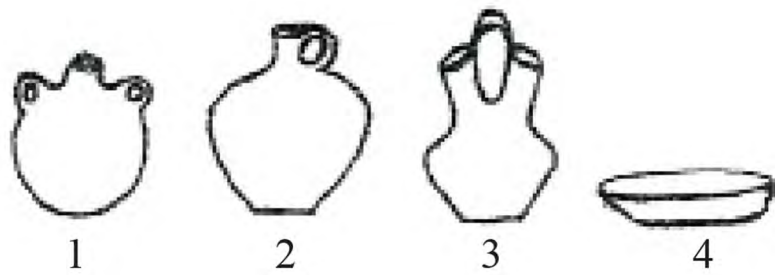
1056 Bowls, basket bowls, and plates, any size

1057 Wedding vases, canteens, and other shapes not listed, any size

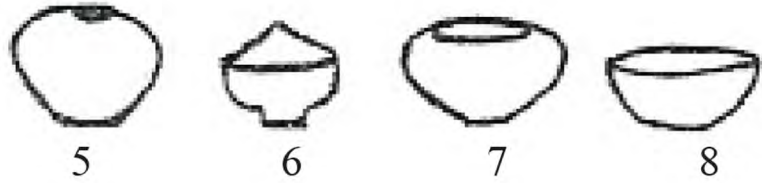
1058 Effigies, figurines, story tellers, and nativity scenes, any size

Note! Please refer next to page for an example of pottery shapes in order to get your entries in the right premium number!

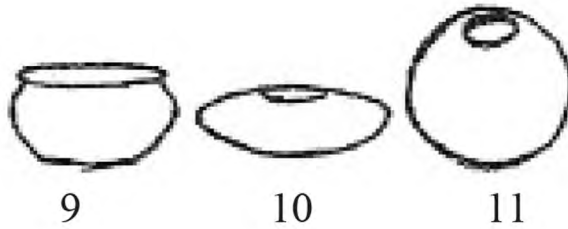
- 1. Canteen
- 2. Pitcher
- 3. Wedding Vase
- 4. Plate



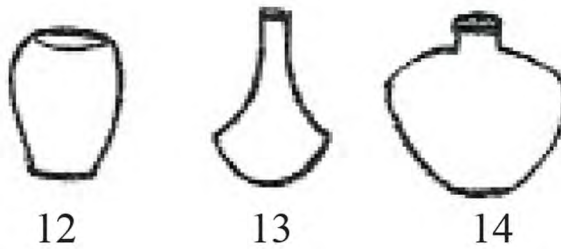
- 5. Seed Bowl
- 6. Prayer Meal Bowl
- 7. Bowl
- 8. Bowl



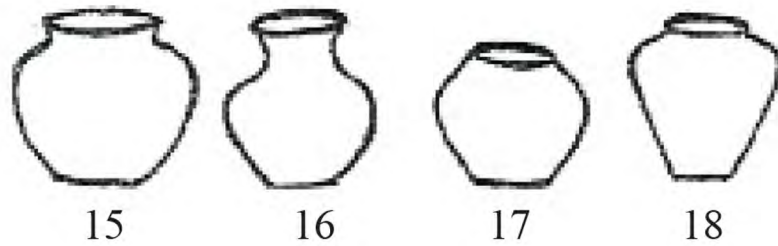
- 9. Bowl
- 10. Bowl
- 11. Bowl



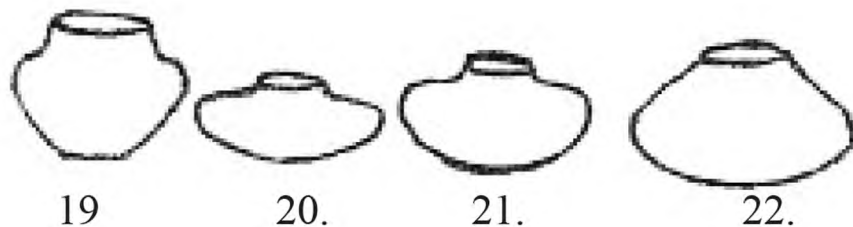
- 12. Vase
- 13. Vase
- 14. Vase or Jar



- 15. Olla or Jar
- 16. Water Jar
- 17. Jar
- 18. Jar



- 19-22 Jar



CLASS XI: PHOTOGRAPHY

Category A: Landscape Photography:

Wildlife, Scenic, Nature, Still Life

(No significant changes using editing software.)

Premiums

1101 Native American Culture, obvious to the viewer.

1102 General

Category B: Portrait Photography:

People, Domesticated Animals, Pets

Premiums

1103 Native American Culture, obvious to the viewer.

1104 General

Category C: Digital Art

(Significant use of editing software.)

Photographic-based

Premiums

1105 Native American Culture, obvious to the viewer.

1106 General

Graphic Design

Premiums

1107 Native American Culture, obvious to the viewer.

1108 General