



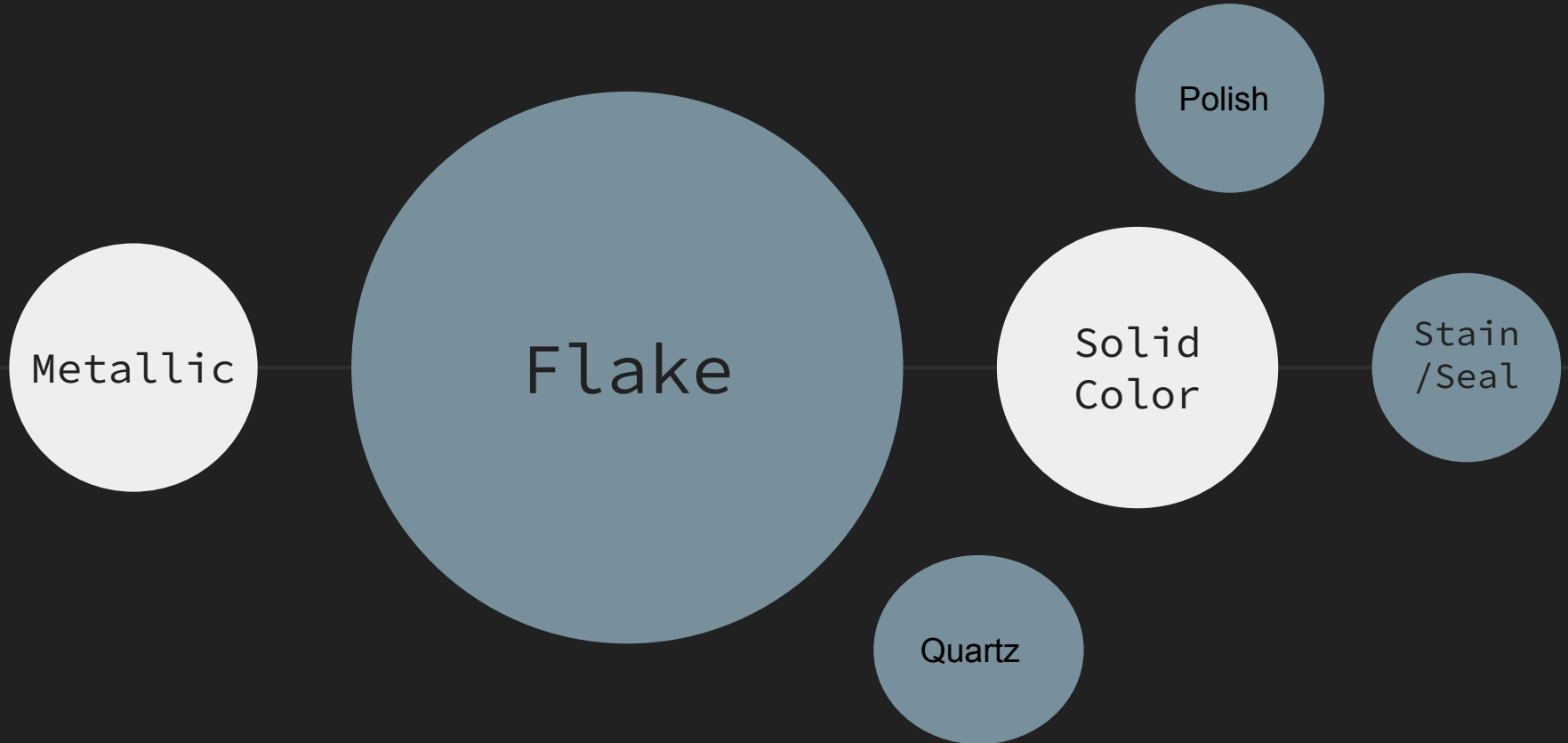
Estimate Guide and Processes

About Our Team and What Separates Us

- ❑ Co-Owners Austin and Collin have a combined 15+ years installing concrete and concrete coatings
- ❑ Family owned and owner operated (Owners will be apart of every installation)
- ❑ All WG Epoxy installers are Certified by 'Concrete Polishing University'
- ❑ Our mission is to put Quality and Excellent Customer service at the forefront of our services



Flooring Options and Finishes



Flake Flooring - Basic Package

- ❑ Basic Package: Includes installation of a 3 layer flake flooring system for the floor only
- ❑ Includes: a pigmented base coat, a layer of flake per your selection, and a clear scratch resistant/UV stable top coat



Flake Flooring - Upgraded Package

- ❑ Upgraded Package: Includes a completely sealed floor along your concrete stem walls. This package contains an additional coved sealant around the perimeter of your space
- ❑ Water will run right out of your garage, preventing underwashing of the sub-surface below your concrete

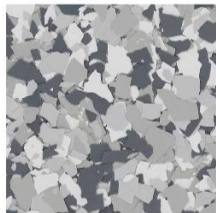


Flake Flooring - Full Package

- ❑ Full Package: Includes Floor, cove, stem walls, and stairs. Same 3 layered flake system, fully sealed in, with the addition of the vertical stem walls and stairs if applicable



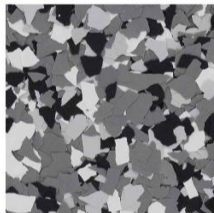
SIGNATURE BLENDS



Gravel



Silverton



Wombat



Creekbed



Cabin Fever



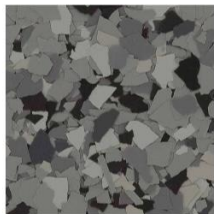
Shoreline



Tidal Wave



Steamboat



Nightfall

MARBLE BLENDS



Ash



Slate

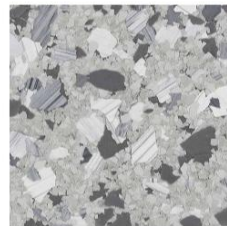


Briar

STONE BLENDS



Juneau



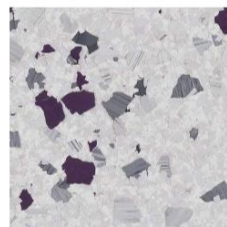
Husky



Denali



Acadia



Klondike



Cascade

Review More Custom Blends, or Customize Your Own Below:

<https://torginol.com/products/flake>



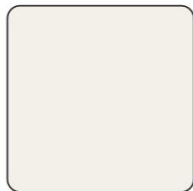
Solid Color Floors

- ❑ Solid Color Floors: Include installation of (2) coats of a pigmented epoxy/poly-aspartic. One basecoat and one scratch resistant/UV stable protective top coat. Generally floor only, but stem walls can be included upon request

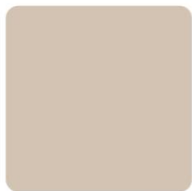


COLOR PIGMENTS

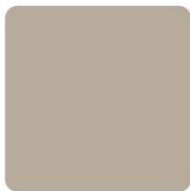
LIQUID FORMAT



WHITE
FLV-0060



BEIGE
FLV-1000



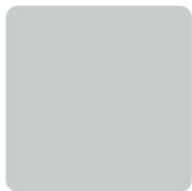
TAN
FLV-1020



KHAKI
FLV-1050



TOFFEE
FLV-1080



LIGHT GRAY
FLV-2000



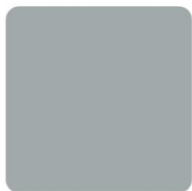
MEDIUM GRAY
FLV-2010



WARM GRAY
FLV-2020



NATURAL GRAY
FLV-2030



CEMENT GRAY
FLV-2040



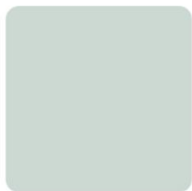
BATTLESHIP GRAY
FLV-2050



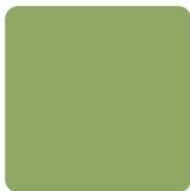
DARK GRAY
FLV-2060



CHARCOAL
FLV-2070



MINT GREEN
FLV-5000



KELLY GREEN
FLV-5030



BRIGHT GREEN
FLV-5050

STANDARD COLOR PIGMENTS

LIQUID FORMAT



LIGHT BROWN
#248



***MEDIUM GRAY**
#305



DARK YELLOW
#331



DEEP BLUE
#353



MEDIUM BLUE
#360



BURGUDY
#375



TERRA COTA
#376



***ALMOND**
#431



WHITE
#433



PEBBLESTONE
#437



LIGHT GREEN
#446



FOREST GREEN
#454



BLACK
#459



CHARCOAL
#470



AQUA
#517



PALE BLUE
#521

STANDARD COLOR PIGMENTS

LIQUID FORMAT



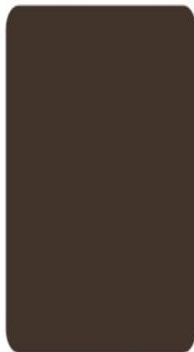
SILVER
#524



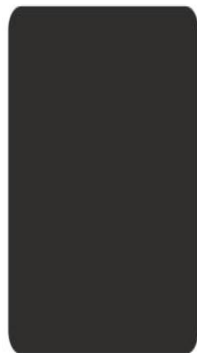
LIGHT PURPLE
#530



LIGHT GRAY
#885



CHOCOLATE
#933



DARK BROWN
#939



LIME GREEN
#952



BEIGE
#999



COLOR PIGMENTS

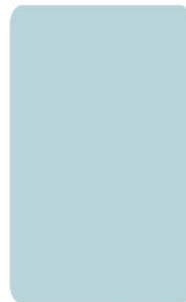
LIQUID FORMAT



FOREST GREEN
FLV-5080



SAFETY YELLOW
FLV-6010



LIGHT BLUE
FLV-7000



NEUTRAL BLUE
FLV-7040



DEEP BLUE
FLV-7070



SAFETY RED
FLV-8320



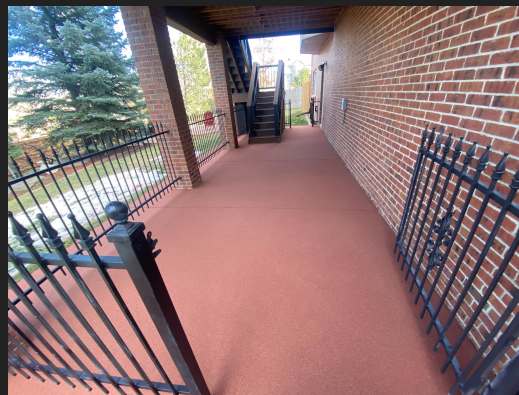
BRICK RED
FLV-8070



BLACK
FLV-9990

Quartz Flooring

- ❑ Quartz Flooring Includes: Installation of a (5) layered crushed quartz and epoxy/poly-aspartic system. One pigmented layer of moisture vapor barrier epoxy, one layer of quartz sand, an additional layer of poly-aspartic/epoxy, a second layer of quartz sand, and a final scratch resistant/UV stable protective top coat of poly-aspartic. Top coat can be optional depending on desired finish/texture



QUARTZ SAND SYSTEM

COLOR ADDITIVE



LIMESTONE
QUARTZ



SLATE
QUARTZ



FLINT
QUARTZ



COBBLESTONE
QUARTZ



MOJAVE
QUARTZ



SANDSTONE
QUARTZ



EVENING
QUARTZ



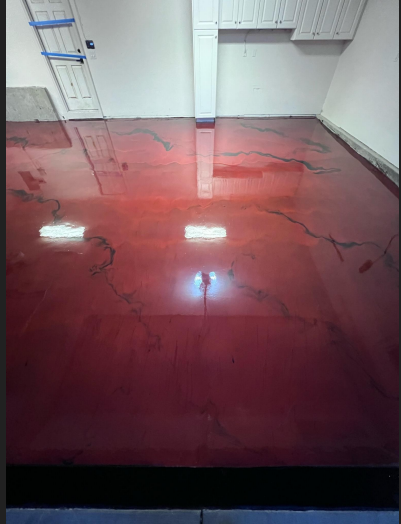
BLUE MOON
QUARTZ



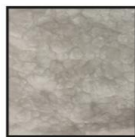
BRICK
QUARTZ

Metallic Flooring

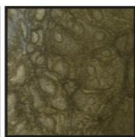
- ❑ Metallic Flooring Includes: Installation of a (3) layered epoxy system, pigmented with metallic color.
- ❑ One layer of pigmented epoxy basecoat, one layer of a multiple (or single) color decorative coat, and a final layer of a scratch resistant/UV stable protective polyurethane top-coat
- ❑ Can be installed in basic coverage rates or heavy coverage for desired depth and appearance



DESIGNER COLLECTION



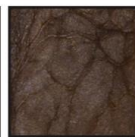
ALUMINUM



AVOCADO



BUTTERSCOTCH



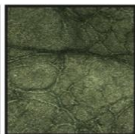
COCOA



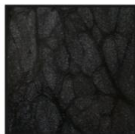
DEEP PURPLE



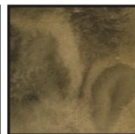
DENIM



EMERALD GREEN



JET BLACK



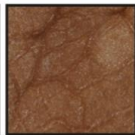
KHAKI



MAHOGANY



MOTHER OF PEARL



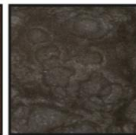
PEACH



PLUM



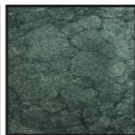
ROSE



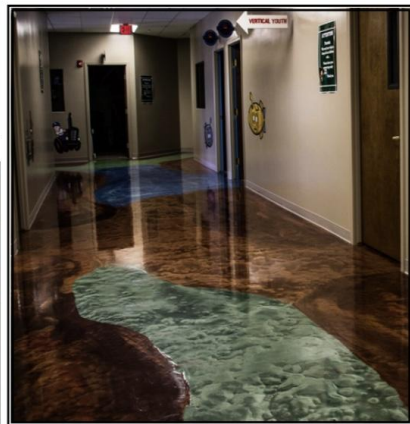
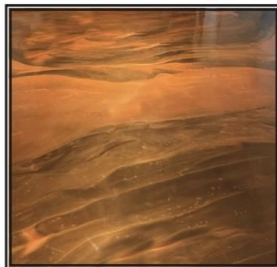
STEEL



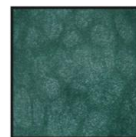
SUNRISE



TEAL



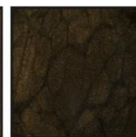
VIBRANT COLLECTION



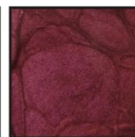
AQUAMARINE



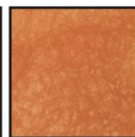
BUCKSKIN



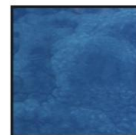
COFFEE



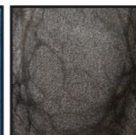
CABERNET



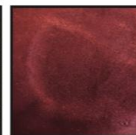
ORANGE CREAM



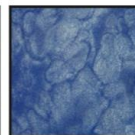
PACIFIC BLUE



PEWTER



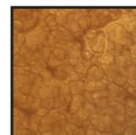
RUBY RED



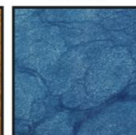
SKY BLUE



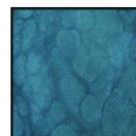
SUN KISSED



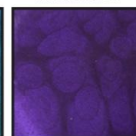
SUNFIRE



TAHOE BLUE



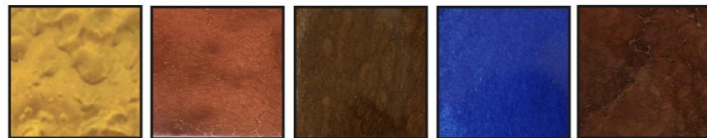
TURQUOISE



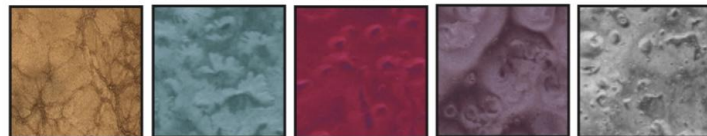
VIOLET



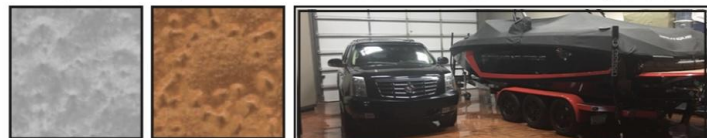
STANDARD COLLECTION



ARIZONA GOLD AUTUMN BLAZE CAPPUCCINO CARIBBEAN BLUE CHESTNUT

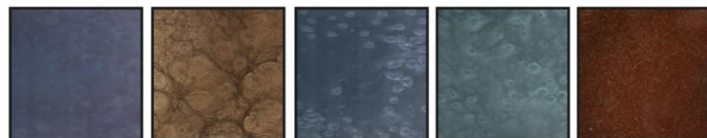


COPPER GALAXY BLUE MERLOT PURPLE HAZE QUICK SILVER

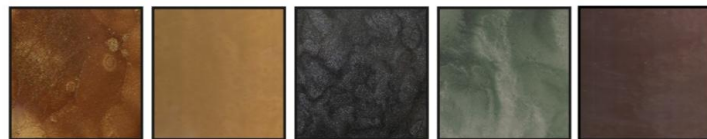


STERLING TUSCAN SUN

PREMIER COLLECTION

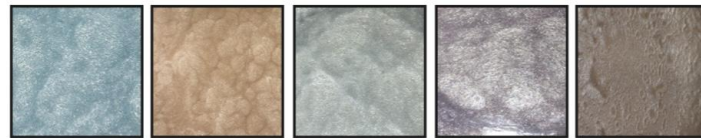


BLURPLE BURLYWOOD CELESTIAL BLUE CERULEAN BLUE CINNABAR



MANGO TANGO MAYAN GOLD ONYX PERFECT STORM SEQUOIA

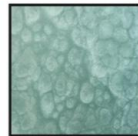
SOFT SERIES COLLECTION



BLUE ICE BLUSH FROST LAVENDER LILAC



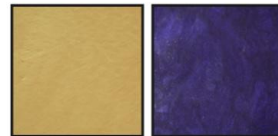
MINT PAPAYAWHIP PEARL PEBBLE BEACH PLATINUM



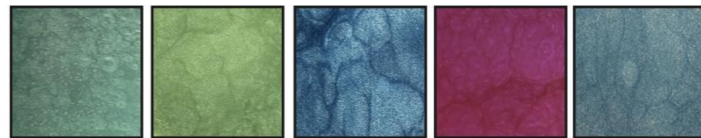
SEAFOAM SNOW DRIFT

****IT IS HIGHLY RECOMMENDED THAT A WHITE BASE/
PRIME COAT IS USED IN CONJUNCTION WITH ANY OF
THE LIGHT METALLIC COLORS.
**PLEASE NOTE THAT COVERAGE RATES AS WELL AS
APPLICATION TECHNIQUES WILL ALTER THE FINAL
APPEARANCE OF THE PROJECT.**

KIDZ COLLECTION



CABANA BANANA GRAPE



JADE LIME GREEN RACER BLUE PINK

SURFS UP



Concrete Stain/Seal

Concrete Stain: Includes installation of water or acid based stain/dye with addition of topcoat sealer. Sealer recommendation varies on application: poly-aspartic/epoxy vs standard solvent based

Concrete Seal: Includes removal and reapplication of a solvent based sealer to restore look of original sealed concrete



Products Used In All Installations

- ❑ Commercial Grade and manufacturer guaranteed/warrantied
- ❑ Differing applications and conditions produce a different recommended combination of resins: epoxy vs poly-aspartic
- ❑ Product data information is available upon request

AR-POLY 100

POLYASPARTIC COATING

PRODUCT DESCRIPTION

AR-POLY 100 is a very low VOC, two components polyurea system designed to maintain the integrity of various surfaces such as concrete, wood, metal, etc. It exhibits excellent UV stability as well as good mechanical properties, good chemical and solvent resistance, while showing a very good aesthetic appearance.

APPLICATIONS

POLY 100 is very suitable to protect:

- Industrial flooring
- Bridges
- Maintenance facilities
- Aircraft hangar
- Flooring
- Car washes
- Areas needing a resistant flooring topcoat.

PACKAGING

AR-POLY 100 is packaged in factory proportioned packaging for easy handling and mixing. Resin (A): 1 US Gallon
Hardener (B): 1 US Gallon

ADVANTAGES

- Very low odor
- Very low VOC
- UV stable
- Aesthetic finish
- Good chemical resistance
- Good mechanical properties
- Easy to clean, bacteria and moisture resistant surface

STORAGE

All PPH TECH INC components should be stored in dry, temperature-controlled areas between 12-28°C. Do not expose to freezing or excessive high heat.

TECHNICAL DATA @ 25°C

% SOLIDS BY WEIGHT	100%	VOC CONTENT	> 3 g/L
POT LIFE 1500 @ 25°C	40-50 Minutes	MIXING RATIO BY VOLUME	1:1
WORKING TIME (23°C/12% RH)	30-35 Minutes (Bmix)	MIXED VISCOSITY	300-400 cps
TACK FREE TIME (23°C/12% RH)	3 Hours (Bmix)	RECOAT TIME (MIN/MAX)	4 Hours / 6 Hours
SUGGESTED # OF COATS	1-2	LIGHT TRAFFIC	24 hours
FOOT TRAFFIC	4-6 Hours	SHELF LIFE	12 Months unopened
FULL CURE	7 Days		
COMPRESSIVE STRENGTH	9000-10000 psi	BOND RESISTANCE	268 psi
ASTM D695		ASTM D4541	
TENSILE STRENGTH	7000-8000 psi	HARDNESS (SHORE D)	70-75
ASTM D688		ASTM D2240	
PERMEABILITY	0.2%	ELONGATION	100%
ASTM D571		D58	
ABRASION RESISTANCE	0.10 g		
ASTM D4060			

WG Epoxy LLC Standard Warranty Agreement

LIMITED WARRANTY; EXCLUSION OF OTHER WARRANTIES. Contractor warrants that the product applied during the Project by it are free from defects in workmanship, materials, and delamination under normal use and service, **for a period of (22) years from the date of application** if under normal conditions of use and proper maintenance. THIS WARRANTY IS IN LIEU OF ALL OTHER WARRANTIES, EXPRESS OR IMPLIED, STATUTORY OR OTHERWISE, INCLUDING (WITHOUT LIMITATION) THE WARRANTIES OF MERCHANTABILITY AND FITNESS FOR A PARTICULAR PURPOSE.

Such warranty shall not apply to any defects resulting in whole or in part from incorrect information received from Client, substrate related issues, or the improper use or maintenance of the product. Contractor makes no warranty with respect to product manufactured by others. Contractor's obligation under this warranty shall be strictly and exclusively limited to either of the following at Contractor's sole discretion: (1) repair and re-application of the product, which are determined to be defective on inspection by an authorized representative of Contractor; or (2) reimbursement to Client for the reasonable repair or replacement of the defective product covered by this Limited Warranty. In the event Contractor elects the reimbursement option, it is the responsibility of Client to obtain and pay for any repairs or replacement. If, for any reason, it should be impractical, in Contractor's sole discretion, to provide a repair and replacement of the product, Contractor may instead refund the amount paid for the Project. Contractor's inability to correct, repair or replace a defective product or application of product despite using reasonable efforts to do so shall not render this limited remedy invalid or unenforceable as having failed its essential purpose. Written notification must be received by Contractor within the warranty period, or within thirty (30) days of any believed defect for a warranty claim, identifying yourself as having a warranty claim and description of the issue.

Collin Gibbs

Owner - WG Epoxy LLC

What To Expect Day Of & The WG Process

Steps to a Quality Floor

- Test the concrete to determine the hardness and verify which grinding diamonds will produce the best cut
- Grind the floor with a commercial grade walk behind concrete grinder, and hand grind the edges to completely remove concrete topcoat - this exposes concrete for good bonding adhesion. Note: grinders will be hooked up to vacuums to prevent airborne dust
- Patch any holes, cracks, or spalling with commercial grade urethane/concrete/epoxy patch
- Clean out all joints of packed debris
- Vacuum concrete to remove all dust/debris and acetone mop
- Seal joints and install cove on stem walls using a polyurethane based caulk that is compatible with our resin products
- Basecoat and broadcast flake on stem walls and floor. We will squeegee, roll, and brush the resin to ensure even and full coverage
- Allow basecoat to cure
- Once cured scrape (or sand) to ensure a nice texture profile
- Topcoat with a clear scratch resistant/UV stable polyaspartic



After Care/Maintenance

- Day of: we will manually shut your garage door to remain 2-3" above installed product. The garage door needs to remain off of the floor until the next day
- Foot traffic can proceed the following day after installation
- Large items such as tool boxes, shelving, etc.. need to remain off of the floor for 48 hours
- Cars will need to remain off of the floor for 72 hours to allow full cure and prevent damage
- Cleaning: No harsh chemicals are needed. Floor is cleaned best with warm water and a mild soap if needed
- A microfiber mop or bristled broom is recommended
- With a completely sealed floor, the water and soap will wash right out!

