

● SPECIFICATION

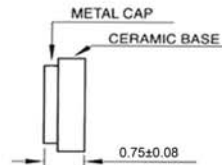
Model	OSC-S21 SERIES		
Frequency range	4.000 ~ 50.000MHz		
Storage temperature range	- 55°C ~ +125°C		
Operating temperature range	-10°C ~ +70°C , -40°C ~ +85°C		
Frequency stability	±20ppm ~ ±50ppm		
Power supply voltage	3.3V±10%	2.5V±5%	1.8V±5%
Current consumption	4.00~9.99MHz:5mA max.	4.00~9.99MHz:4mA max.	4.00~9.99MHz:3mA max.
	10.00~19.99MHz:6mA max.	10.00~19.99MHz:5mA max.	10.00~19.99MHz:4mA max.
	20.00~31.99MHz:7mA max.	20.00~31.99MHz:6mA max.	20.00~31.99MHz:5mA max.
	32.00~50.00MHz:8mA max.	32.00~50.00MHz:7mA max.	32.00~50.00MHz:6mA max.
Output level	C-MOS		
Load	15pF max.		
Output voltage level	VOL:10%Vdd max. / VOH:90%Vdd min.		
Duty cycle	40%~60% at 1/2Vdd		
RISE / FALL TIME	4.00~9.99MHz:5nS max.	4.00~9.99MHz:5nS max.	4.00~9.99MHz:6nS max.
	10.00~19.99MHz:5nS max.	10.00~19.99MHz:5nS max.	10.00~19.99MHz:6nS max.
	20.00~31.99MHz:5nS max.	20.00~31.99MHz:5nS max.	20.00~31.99MHz:5nS max.
	32.00~50.00MHz:5nS max.	32.00~50.00MHz:5nS max.	32.00~50.00MHz:5nS max.
AGING	±3ppm/Year		

● DIMENSION (mm)

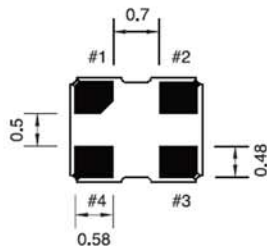
<TOP>



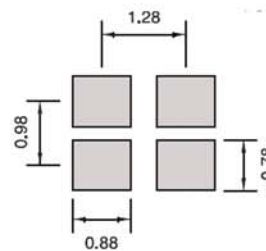
<SIDE>



<BOTTOM>

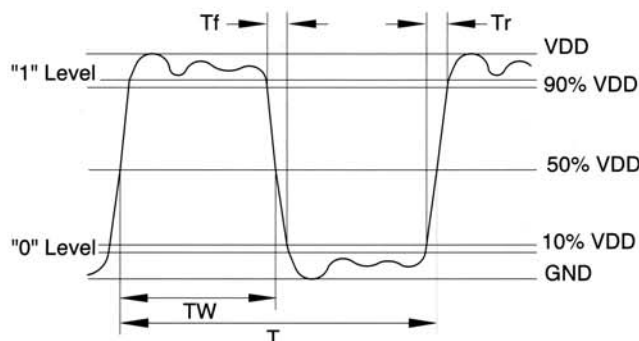


#1 : E/D #2 : GND
#4 : VDC #3 : OUTPUT

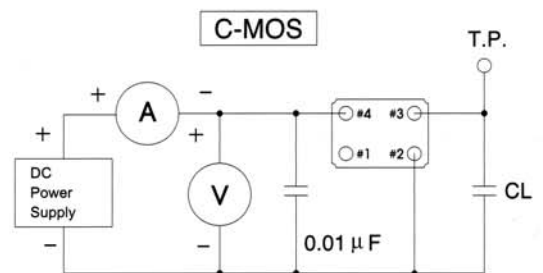


(Recommended Land Pattern)

● OUTPUT WAVEFORM



● TEST CIRCUIT



*** Because S21 series has no by pass capacitor.
So, we recommend our customer to use capacitor 0.01μF
in join Vcc and GND.