

PTZ-4160-HD36ALPR

KEY FEATURES

• LICENSE PLATE RECOGNITION

Embedded OCRALPR capabilities. Includes Vehicle features and description recognition

• AI VIDEO ANALYTICS

8 intelligent OCR modes powered by AI engine which filters objects to focus on human and vehicle detection

• 36X OPTICAL ZOOM

Zoom onto distant subjects while still maintaining clarity, delivering high quality video the entire zoom range

• UP TO 90FPS

Cameras catch images with no latency during high speed movement



LEARN MORE ABOUT THIS PRODUCT

Ultra Low Light

Able to deliver high detailed color images even in 0.002LUX low light environments without any supplemental lighting.

Smart IRII

Self adjusting Infrared high beam and low beam functionality suitable for all lighting conditions. Up to 180 Meters.

HLC

High Light Compensation. Improving image visibility under strong light sources.

IP67-Rated Resistance

Camera is built to withstand all weather conditions.

Local Storage Backup

Up to 1 Terabyte local storage for video and plate backup.

Integrated Cable Mgmt.

POE, Power, and Alarm block interface built into the base of the camera for neat installation.

140dB Super WDR

The cameras built in Super WDR produces quality images across all ranges of light level.

IK10-Vandal Proof

Camera withstands the highest rated impact testing using international standards.

Vehicle Recognition

- License Plate (Temporary and Obscured included)
- No Plate Vehicle Recognition
- Vehicle type (Motorcycle, Car, SUV, Truck, etc)
- Plate & Vehicle Color
- Model
- Region
- Direction of Travel

CREATE A SMART CITY

POWERED BY PACKETALK



Customize a mobile surveillance trailer



< Diesel-Powered Surveillance Trailer PT-RD6000



Add a LPR

Our License Plate Recognition is an AI-based license plate detection, recognition and search solution with an accuracy as high as 98%.



Deploy iSMART

The Interactive Situational Monitoring Analysis Response Tool (iSMART) is a proven real-time situational awareness, problem solving, and resource management



CALL US

888-392-0457



EMAIL US

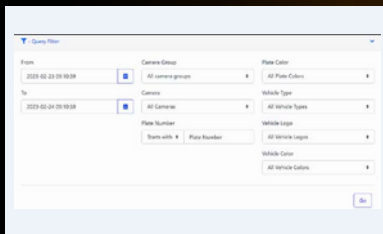
SALES@SILENT6.NET



VISIT OUR WEBSITE

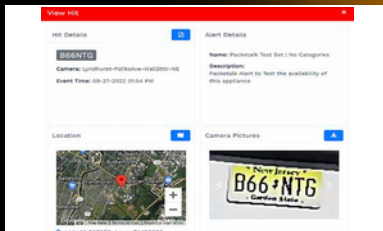
WWW.SILENT6.NET

PTZ-4160-HD36ALPR



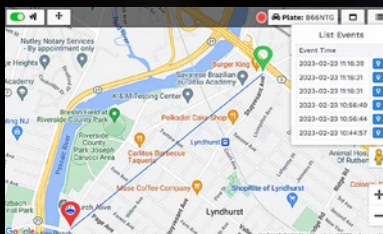
INAAAP

Packge talk Interoperable National ALPR & Analysis Platform. Creates Interoperability across county and state lines for Plate recognition and vehicle exception reports. Equipped with API and third Party integration.



ALERT SYSTEM

The Alert system provides real time interactive Popup/Email notifications for users. Customizable Alert creation and fully integrated with NCIC/SCIC/MVC databases.



REAL TIME ACTIONABLE INTELLIGENCE

Built-in GPS location for real time tracking or historical alerts plotted on an interactive map.

SPECIFICATIONS

CAMERA		INTERFACE	
Image Sensor	1/1.8" Progressive Scan CMOS	Ethernet	1*RJ45 10M/100M Ethernet Port
Min. Illumination	Color: 0.002Lux@F1.55 B/W: 0Lux with IR on	Audio I/O	1/1
WDR	140dB Super WDR	Alarm I/O	4/2
Shutter Time	1/10000s~1s	NETWORK	
Digital Zoom	16X	Network Storage	NAS (Support NFS, SMB/CIFS), ANR
Day/Night Mode	Day/Night/Auto/Customize/Schedule	Protocol	IPv4/IPv6, ARP, TCP, UDP, RTCP, RTP, RTSP, RTMP, HTTP, HTTPS, DNS, DDNS, DHCP, FTP, NTP, SMTP, SNMP, UPnP, Bonjour, SIP, PPPoE, VLAN, 802.1x, QoS, IGMP, ICMP, SSL
S/N	>55dB	SYSTEM	
LENS		Storage	Support microSD/SDHC/SDXC Card Local Storage, up to 1TB
Lens	5.7~205.2mm, 36x Optical Zoom	Advanced Function	BLC, HLC, 2D DNR, 3D DNR, AWB, IP Address Filtering, AGC, Anti-flicker, Corridor Mode, Deblur, Watermark
Field of View	H63°~H3°/D69°~D3°/V36°~V1°	Event Trigger	Black/White List, Motion Detection, Network Disconnection, External Input, Audio Alarm, etc.
Focus Control	Auto/Semi-Auto/Manual	Event Action	FTP Upload, SMTP Upload, SD Card Record, External Output, SIP Phone, HTTP Notification, etc.
Iris Control	Auto	System Compatibility	API, HTTP, TCP, ONVIF Profile G & M & S & T
LPR		GENERAL	
Max. Vehicle Speed	125 MPH	Working Condition	-40°C~60°C/ Humidity: 0~95% (Non-condensing)
Recognition Accuracy	>98%	Power Supply	PoE (802.3at) / AC 24V/3A±10%
Smart Traffic Detection	Plate Color, Vehicle Type, Vehicle Color, Vehicle Brand, No-plate Vehicle Capture	Power Consumption	13W MAX / 23W MAX (With IR on)
PTZ		Weather Proof/ Housing	Up to IP67-rated for Weather-resistant Performance / Vandal-proof IK10-rated Metal Housing (Optional)
Pan Range/ Pan Speed	360°endless Pan Manual Speed: 0.1°~250°/s, Pan Preset Speed: 250°/s	Surge Protection	6KV
Tilt Range/ Tilt Speed	-5°~90°(Auto Flip) Tilt Manual Speed: 0.1°~160°/s Tilt Preset Speed: 160°/s	Dimensions/Weight	Φ205mmX308mm/4Kg
Preset Quantity	300		
Other Function	Auto Scan, Auto Home, Preset Freezing, 3D Positioning, PTZ Limits, Initial Position		
IR			
IR Distance	Up to 300m		
IR Angle	Auto/Manual		
VIDEO			
Max. Image Resolution	2688x1520		
Video Compression	H.265+/H.265(HEVC)/H.264+/H.264/MJPEG		
Image Setting	Brightness/Contrast/Saturation/Sharpness		

GET IN TOUCH

CONTACT US

T (888)392-0457

E sales@silent6.net

SILENT6.NET