

# 50

YEAR

*Anniversary*

1975 - 2025

50 YEARS OF CTE IMPACT: MICHIGAN'S LEGACY  
OF TRANSFORMING SPECIAL POPULATIONS

*April 30 - May 2, 2025*

BOYNE MOUNTAIN RESORT  
BOYNE FALLS, MICHIGAN

IN COLLABORATION WITH:

MICHIGAN DEPARTMENT OF LABOR & ECONOMIC OPPORTUNITY/WORKFORCE DEVELOPMENT AGENCY  
AND

MICHIGAN DEPARTMENT OF EDUCATION/OFFICE OF CAREER AND TECHNICAL EDUCATION



## On behalf of the Conference Planning Committee



*Ariel Maturine*

Dear MOSPA Conference Attendees,

Welcome to the 50th Annual MOSPA Conference: 50 Years of CTE Impact – Michigan's Legacy of Transforming Special Populations!

As co-chairs of the MOSPA Conference, we are truly honored to have you join us for this milestone event at Boyne Mountain Resort, April 30 – May 2, 2025. This conference is a testament to the dedication, passion, and innovation of the educators and professionals who have worked tirelessly to support special populations in Career and Technical Education (CTE). For five decades, MOSPA has been at the forefront of advocating for equity, access, and excellence in CTE, and we are thrilled to celebrate this incredible legacy with all of you.

This year's conference is packed with dynamic sessions, engagement with the latest state updates, and opportunities for meaningful collaboration. We are especially excited to welcome Dr. Oluwaferanmi O. Okanlami, who will share their expertise and inspire us as we look ahead to the future of CTE. Your active involvement and enthusiasm are vital in making this event a resounding success.

We encourage you to take full advantage of this time together—connect with colleagues, exchange ideas, and explore new ways to empower the students we serve. As we celebrate 50 years of impact, we are reminded that our work is never done. The landscape for special population students is evolving at an unprecedented pace, and it is only through collaboration, innovation, and continuous learning that we can help our students navigate these changes effectively. Together, we will continue to shape the future of special populations in Michigan's CTE programs.

Thank you for being part of this extraordinary moment in MOSPA's history. We are excited to learn, grow, and celebrate with you!

With gratitude,

Ariel Maturine  
MOSPA 2025 Conference Chair

Tracey Taylor  
MOSPA 2025 Conference Co-Chair



*Tracey Taylor*

## Welcome to 2024-25 MOSPA State Conference!

As we celebrate the 50th anniversary of MOSPA, I am filled with immense pride and gratitude for all we have achieved together. It has been an honor to serve as your president, and to witness firsthand the remarkable growth, dedication, and unwavering commitment that have defined our community and state over the years.

Fifty years ago, a small group of passionate individuals came together with a shared vision to create a platform where professionals could connect, collaborate, and elevate our industry to new heights. Today, that vision has grown into a thriving network of professionals, a strong community, and a testament to the power of collective effort.

Throughout my term as president, I've been continually inspired by MOSPA's innovation, resilience, and determination. Each challenge we faced was met with dedication, and each success was celebrated as a milestone for us all. This anniversary is not only a time to look back on the extraordinary journey we've taken, but also a time to look ahead to the future.

As we pass the torch to the next generation of teachers and learners, I have no doubt that MOSPA will continue to evolve and strive. Together, we will continue to champion excellence, support one another, and drive progress in our field. I am incredibly proud to have been a part of this chapter, and I'm excited to see where the next 50 years will take us.

Thank you for your trust, your collaboration, and your passion. Here's to another 50 years of success, growth, and community.

Warm regards,

Peter Gonzalez  
Outgoing President, MOSPA



*Chef Pete*



## **Welcome all to the 2025 MOSPA Conference!**

On behalf of the MOSPA Executive Council and organizing committee, it is my honor to welcome you to the MOSPA 2025 Conference! This year, we proudly celebrate “50 Years of CTE Impact: Michigan’s Legacy of Transforming Special Populations.”

My name is Megan Downey, and I serve as the Interim Associate Dean of Advising; Student Support at Grand Rapids Community College. It has also been my privilege to serve you as MOSPA President-Elect.

This year’s theme reflects five decades of progress, innovation, and unwavering dedication to supporting special populations in career and technical education. As we come together for this milestone event, we recognize the collective efforts that have shaped CTE in Michigan and the profound impact of our work on students’ lives.



*Megan Downey*

The MOSPA conference is more than just a gathering—it is a collaborative space where we exchange ideas, share best practices, and forge partnerships that drive meaningful change. Your commitment to equity, access, and student success has been the foundation of CTE’s transformative power, and this conference is an opportunity to build on that legacy.

Over the next few days, I encourage you to take full advantage of the engaging workshops, dynamic discussions, and invaluable networking opportunities. Let’s celebrate our past, reflect on our achievements, and set the course for the future of CTE in Michigan.

Thank you for your dedication to empowering students and strengthening CTE. Let’s make this conference both impactful and memorable—and most importantly, let’s have fun!

Lastly, let’s have fun!

Warm regards,

Megan Downey  
MOSPA President - Elect  
Interim Associate Dean of Advising & Student Support  
Grand Rapids Community College

## GENERAL INFORMATION

### Awards



We invite nominations for the 2026 outstanding individual, program, or community partner who has gone above and beyond to support Special Population students and/or Occupational Programs/Career Technical Education. Five award categories are available for nomination, One secondary and one post-secondary winner will be selected for each category. The nomination form and criteria can be found by scanning the QR code in this section or by clicking this link, <https://mospaonline.org/awards-%26-recognition>, to open the page in an internet browser.

### Door Prizes

Door prizes will be awarded at the conference wrap-up on Friday May 2nd at 9:15-9:45am. It is not guaranteed that all attendees will receive a door prize. For all attendees to receive a door prize, everyone must bring one to donate. You may drop off your door prize donation at conference registration. Remember to hold on to the ticket you received from registration when you dropped off your door prize to be eligible to win prizes on Friday's giveaway. Must be present to win.

### Conference Breakout Sessions Evaluations



You will receive an evaluation link at the end of each session to share your feedback. We request that you fill out a breakout session evaluation online by scanning the QR code in this section or by clicking this link, [https://docs.google.com/forms/d/e/1FAIpQLSfhqf7HPDVc1rg-NuYtqBrlyYQTujx2YqLF2tbv2pff1oG\\_fkA/viewform](https://docs.google.com/forms/d/e/1FAIpQLSfhqf7HPDVc1rg-NuYtqBrlyYQTujx2YqLF2tbv2pff1oG_fkA/viewform), to open the form in an internet browser. Please assist in the continuation of the MOSPA Conference by providing your valued feedback after each session. This feedback assists with planning future conferences.

### Name Badge

Your badge is your ticket to entry and must be worn at all times during the scheduled conference hours. Badges recognize you as a participant of the MOSPA conference. Name badge ribbons will also indicate the Conference Committee members, Executive Council members and Conference Presenters.

### State Continuing Education Clock Hours (SCECHs) Information

For conference participants who are interested in receiving SCECHs, please see the conference committee member at Registration.

### Thursday Night Social Event

Join us on Thursday evening as we commemorate MOSPA's 50th Anniversary with a night of celebration and community! Dine & Win: Enjoy dinner at any restaurant located on the Boyne Mountain Resort property. By doing so, you'll be entered into a drawing to win one of three exciting prizes! Simply retain your receipt and visit the Hospitality Suite for entry details. S'mores Under the Stars: Cap off your evening with complimentary s'mores by the outdoor fire pits. It's our sweet way of saying thank you for being part of MOSPA's journey. For more information and directions, please stop by the Hospitality Suite.

## 2024 AGENDA AT-A-GLANCE

Wednesday, April 30, 2025	
1:00pm - 4:00pm	MOSPA Board Meeting, (Geneva - Lower Level)
4:30pm - 8:00pm	Registration (Lobby)
6:00pm - 8:00pm	Welcome Reception and Opening Remarks (Vienna)

Thursday, May 1, 2025	
7:30am - 5:00pm	Registration / Help Desk
8:00am - 9:00am	Breakfast - Matterhorn A & B
9:15am - 10:30am	Keynote Speaker, Oluwaferanmi O. Okaniami MD, MS - Matterhorn A & B
10:45am - 11:00am	Networking Break
11:00am - 12:15pm	Concurrent Breakout Sessions I
12:30pm - 1:30pm	MOSPA State Awards Banquet & Lunch - Matterhorn A & B
1:45pm - 3:00pm	Concurrent Breakout Sessions II
3:00pm - 3:30pm	Networking Break
3:30pm - 4:45pm	Concurrent Breakout Sessions III
6pm	TBA Anniversary Event

Friday, May 2, 2025	
8:00am - 11:00am	Registration / Help Desk
8:00am - 9:00am	Breakfast - Matterhorn A & B
9:15am - 9:45am	Wrap-up and Door Prizes - Matterhorn A & B
10:00am - 10:15am	Networking Break
10:15am - 11:15pm	Concurrent Sessions IV
11:15am - 12:00pm	Networking

## MOSPA BOARD OF DIRECTORS

Executive Council	
President	Peter Gonzalez*
President Elect	Megan Downey
Past President	Anthony Webster
Secretary	Jennifer Crabtree*
Treasurer	Erik Dedenbach
Co-Treasurer	Amanda Koch*
At-Large Representative	Brigitte June*

Regional Representatives			
Region 1:	Tim Zimmerman Jennifer Marley	Region 7:	Katrina Ware-Burchfield Josie Smith
Region 2:	Tammy Kelley Shawn Kadwell	Region 8:	Vacant
Region 3:	Sandra Curran Carla Shay John Boersma	Region 9:	Vacant
Region 4:	Amanda Koch*	Region 10:	Rhonda Donovan* Sue Tarrow
Region 5:	Terri West*	Region 11:	Maria Schmidt*
Region 6:	Dorothy Getty-Gerlica		

State Liaisons	
Secondary State Liaison	Open
Post-Secondary State Liaison	Virginia Zimmerman*

## 2025 CONFERENCE COMMITTEE MEMBERS

Ariel Maturine, Conference Chair	Tracey Taylor, Conference Co-Chair
Lois Baldwin	Shari Hawken
Nolan Lienhart	Amy Dykhouse
Additional Committee Members include Executive Council members and Regional Representatives above denoted by *.	





## Opening Keynote Speaker

### Dr. Oluwaferanmi Okanlami, M.D., M.S.

*Director of Student Accessibility and Accommodation Services  
University of Michigan*

Dr. Oluwaferanmi Okanlami is the Director of Student Accessibility and Accommodation Services at the University of Michigan. He oversees the office of Services for Students with Disabilities, two Testing Accommodation Centers, Academic Support and Access Partnerships, and is the founding director of the Adaptive Sports; Fitness Program. He is also an Assistant Professor of Family Medicine, Physical Medicine; Rehabilitation, Urology, and Orthopedic Surgery and the Associate Director of the Health Policy and Economics Path of Excellence at Michigan Medicine; and holds an Adjunct Assistant Professor of Orthopaedic Surgery appointment at the David Geffen School of Medicine at UCLA in an effort to develop a robust adaptive sports medicine program in anticipation of the upcoming Los Angeles Olympic and Paralympic Games in 2028.

“Dr. O” was born in Nigeria before immigrating to the US at a young age. He attended High School at Deerfield Academy and college at Stanford University where he also ran Track & Field, serving as captain his last two seasons and achieving Academic All-American recognition.

He then earned his MD from the University of Michigan before matching into Orthopedic Surgery at Yale. At the beginning of his 3rd year he experienced a spinal cord injury, paralyzing him from the chest down. After two surgeries and intense rehabilitation, he was blessed with some return of motor function, and navigates the world as a proud wheelchair user, managing the other long-term sequelae of an incomplete cervical spinal cord injury.

He went on to earn a master's in Engineering, Science, and Technology Entrepreneurship from The University of Notre Dame, and completed his Family Medicine Residency at Memorial Hospital in South Bend, Indiana. He served on the St. Joseph County Board of Health, appointed by then Mayor, turned Secretary of the Department of Transportation, Pete Buttigieg, was featured on Robin Robert's Good Morning America Series “Thrivers Thursday,” and has a catch phrase, “Disabusing Disability®,” hoping to demonstrate that DISability doesn't mean INability. He is a member of U of M's Institute on Health Policy and Innovation, sits on the Alpha Omega Alpha Medical Honors Society Board of Directors, received Michigan Medicine's Distinguished Early Career Alumni Award in 2020, was given the “A Teacher's Teacher Award” by the Academy of Medical Educators, and currently serves as the President of the Michigan Medicine Alumni Society Board.

Nationally, he served as the Disability Issues representative on the Steering Committee for the Group on Diversity and Inclusion at the Association of American Medical Colleges, sits on the National Medical Association's Council on Medical Legislation, and was selected by the White House Office of Public Engagement to participate in the Health Equity Leaders Roundtable Series dedicated to exploring perspectives around Access to Care. He was appointed to the America250 Foundation Health and Wellness Advisory Council and President Biden's Council on Sports, Fitness and Nutrition. He speaks around the country on topics related to Diversity, Equity, and Inclusion, including, but not limited to creating a health system that is accessible to and inclusive of both patients and providers with disabilities, and providing reasonable and appropriate accommodations for students with disabilities in higher education. He has been featured on CBS News, PBS News Hour, and MSNBC's Morning Joe, and is passionate about adaptive sports and fitness, striving to provide access to physical fitness and inclusive recreational and competitive sports for all.”

**MOSPA CONFERENCE 2024 EXPANDED PROGRAM**

**Thursday, May 2, 2024**  
**Concurrent Breakout Sessions I**  
**11:00 a.m. – 12:15 p.m.**

**Presentation:** Preparing Students For Career Success (panel)

**Location:** Matterhorn C

**Presenter:** *Amy Marshall, Dena Greene, and Kaelee Steffens*

**Organization:** *Management Business Solutions and Wayne Regional Educational Agency*

**Audience:** Secondary and Post-Secondary

**Overview:** This panel will cover various perspectives which will address the gaps and find ways to help all students prepare for career success. Insights on readiness, skills training, and industry expectations for all students, including individuals with disabilities, economically disadvantaged Individuals, and individuals preparing for nontraditional fields.



**Presentation:** Championing Inclusion: Practical Strategies for Special Populations in CTE

**Location:** Matterhorn D

**Presenter:** *Amanda Koch*

**Organization:** *Saginaw County ISD Career Development and Special Populations Consultant*

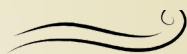
**Audience:** Secondary

**Overview:** This professional development session focuses on fostering inclusion and belonging for special populations students in Career and Technical Education. Participants will engage in practical strategies for creating an environment where all students - regardless of ability, background, or learning needs - feel valued and empowered. Key components include:

**Inclusion and Belonging Strategies:** Explore ways to create a climate where inclusion is not just about academic accommodations, but also social and emotional well-being.

**Teacher Toolkits:** Walk away with a comprehensive toolkit designed to support CTE educators and their efforts in differentiating instruction. Access resources for adapting curriculum, modifying assessments, and applying Universal Design for Learning (UDL) principles.

**Counselor Placement Support:** Help equip school counselors with strategies to support appropriate student placements and collaborate with teachers, families, and community resources.



**Presentation: Best in the West -- How to Create Engaging and Inspiring Recruitment Events for CTE, Non-Traditional, and Under-Represented Students on Your Campus**

**Location:** Arlberg 1

**Presenter:** *Nicole Reinhart-Huberty, Allison Snyder, and Scott Nigoff*

**Organization:** *Lansing Community College West Campus*

**Audience:** Secondary and Post-Secondary

**Overview:** This presentation will provide strategies for developing compelling campus events to attract prospective students in Career and Technical Education (CTE) programs. The session focuses on engaging non-traditional and underrepresented student populations through innovative recruitment techniques. Key topics include:

- Designing interactive, hands-on activities
- Selecting motivational speakers
- Collaborating with faculty and industry partners
- Creating team-building exercises
- Developing program-specific experiential learning opportunities

Targeted toward higher education professionals, the presentation will explore effective methods for showcasing CTE programs in trades, manufacturing, computer information technology, and public service career paths. Attendees will learn practical approaches to:

- Capture student interest
- Highlight program strengths
- Create immersive recruitment experiences

The primary goal is to equip participants with actionable strategies for developing dynamic, engaging campus events that effectively communicate the value of CTE educational pathways.



**Presentation: MiCRI - Michigan Citizen Reentry Initiative: The Power of Second Chances: Bridging the Gap with Apprenticeships**

**Location:** Arlberg 3

**Presenter:** *Gabriel Forkel and Tammy Alvaro*

**Organization:** *Mid-Michigan College*

**Audience:** Secondary and Post-Secondary

**Overview:** The Michigan Citizen Reentry Initiative (MiCRI) offers a comprehensive range of services, including pre-release education, career guidance, social support, and employment assistance for incarcerated individuals, as well as ongoing support after release. This presentation explores the benefits of successful reintegration such as: safer communities, economic savings, stronger families, and an improved quality of life. It outlines MiCRI's approach and highlights data comparing outcomes from similar reentry programs, emphasizing the economic and social impact on both returning citizens and their communities. Additionally, the presentation will showcase apprenticeships as an effective pathway for reentry success, providing returning citizens with career opportunities while helping employers meet their demand for a skilled and motivated workforce.



**Concurrent Breakout Sessions II****1:45 p.m. - 3:00 p.m.****Presentation: Identifying Resources and Forming Partnerships for Meeting Student Basic Needs****Location:** Matterhorn C**Presenter:** *Rhonda Donovan***Organization:** *Schoolcraft College, Livonia***Audience:** Secondary and Post-Secondary

**Overview:** In secondary and post-secondary education, it is important to identify and provide solutions for meeting the basic needs of the students we serve. Basic needs continue to be a major concern among students of all ages. Research shows a direct correlation between basic needs and classroom success. In secondary education, more schools are opening Family Resource Centers to address the needs of students and in the post-secondary setting, higher education institutions are opening or expanding Food Pantries, Clothing Closets, and more to meet individual needs to help students succeed. How can we assist our students who need basic resources to succeed in the classroom and in life? In this session, we will do some group brainstorming as well as look at ideas that are being implemented in both secondary and post-secondary institutions to give you tools and suggestions you may use at your institution in meeting basic needs.

**Presentation: Make your MARC (Michigan Apprenticeship Readiness Certificate)****Location:** Arlberg 3**Presenter:** *Callan Eschenburg***Organization:** *Michigan Department of Labor and Economic Opportunity***Audience:** Secondary and Post-Secondary

**Overview:** Michigan already benefits from high-quality Apprenticeship Readiness (AR) programming, also known as “Pre-Apprenticeship Training” to prepare residents for enrollment into and completion of the USDOL Registered Apprenticeship Programs (RAPs).

While many programs provide completers with skills and connections to help them successfully enter and complete RAPs, unfortunately, some do not.

The MARC provides a way to recognize high-quality AR programs, helping residents access training that leads to RAP opportunities and enables sponsors to more readily find qualified RAP applicants.



*The Michigan Occupational Special Populations Association is committed to providing equal access to all persons in admission, access, or operation of programs and services at secondary and post-secondary level.*



**Presentation: Empowering Futures: How Ready For Life Academy Supports Post-Secondary Transition for Students with Intellectual Disabilities and Autism**

**Location:** Arlberg 1

**Presenter:** *Tori Falk*

**Organization:** *Ready for Life Academy*

**Audience:** Secondary and Post-Secondary

**Overview:** Learn about how a spiraled curriculum reinforces skill development and real-world application, a breakdown of RFLA's approach to independent living, executive functioning, employability skills, relationship-building, and financial literacy. Along with instructional methods that connect classroom learning to real-life experiences and inspiring success stories of students transitioning into independent and fulfilling lives. Specific to our partnering with post-secondary institutions that offer diverse opportunities in skilled trades certificates and associate degrees, Ready for Life Academy students find success thanks to the RFL instructional model and the comprehensive supports in place allowing for the transitional bridging between high school and these kinds of post-secondary opportunities. These elements ensure that students not only gain technical skills but also develop the independence and self-advocacy needed to thrive academically and professionally.

Leave this session with a new perspective on what's possible beyond high school and traditional transition programs. Ready For Life Academy is proof that students with disabilities can continue learning, growing, and preparing for their future in a college environment. We will provide practical goal-setting strategies you can start using with your high school students right away. Let's help them [#thinkhigher](#) and [#thinkcollege](#) and know that [#inclusionmatters!](#)



**Presentation: Strategies for English Learner / Multilingual Learner in the Classroom**

**Location:** Arlberg 2

**Presenters:** *David Moncada, Marina Pakhomova, and Peter Gonzalez*

**Organization:** *Kent Career Technical Center*

**Audience:** Secondary and Post-Secondary

**Overview:** Practical tools and resources for providing a quality and equitable education to ELs/ MLs in the classroom. The EL/ML presentation is designed to help learners of all levels improve their reading, writing, listening, and speaking skills in English. Through interactive lessons, real-life conversation practices, grammar exercises, and vocabulary building, students and staff will develop greater confidence and fluency in the English language. This course provides practical tools and support to help learners achieve their language goals. The presenters will cover curriculum strategies tailored to suit beginners as well as more advanced learners.

WIDA scores are used to assess EL/ ML in grades K-12. These scores are based on access for the EL/ML test and are grouped into six English language proficiency levels.

WIDA score levels: Level 1 Entering, Level 2 Beginning, Level 3 Developing, Level 4 Expanding, Level 5 Bridging, Level 6 Reaching

All levels will be explained in detail how to interpret each level during the presentation.

### Concurrent Breakout Sessions III

3:30 p.m. - 4:45 p.m.

**Presentation:** Bridging Success: Best Practices for Serving Special Populations in Higher Ed

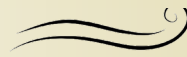
**Location:** Matterhorn C

**Presenter:** Megan Downey

**Organization:** *Grand Rapids Community College*

**Audience:** Post-Secondary

**Overview:** Join this interactive session designed for post-secondary professionals working with Perkins special populations. Through guided table discussions, participants will identify key challenges, share best practices, and collaborate on innovative solutions to better support students. This session will provide a dynamic space for peer learning, problem-solving, and networking to enhance services for students from diverse backgrounds, including those who are economically disadvantaged, English language learners, students with disabilities, and more. Walk away with fresh ideas and practical strategies to strengthen your institution's approach to equity and student success.



**Presentation:** MI Student Aid: Connecting Students to Postsecondary Possibilities

**Location:** Matterhorn D

**Presenter:** *Emily Hurtado-Arboleda*

**Organization:** *MI Student Aid - Michigan Dept. of Lifelong Education, Advancement, and Potential (MiLEAP)*

**Audience:** Secondary and Post-Secondary

**Overview:** In Academic Year 2023-24, the State provided more than \$350 million in financial aid to Michigan college students! MI Student Aid offers a variety of scholarship and grant programs and many of these programs support students from special populations, including, the new Michigan Achievement Scholarship. Join us for an engaging discussion about the State's financial aid programs, learn about innovative services and support available through MI Student Aid and gain a better understanding of student data available in our online data management system, MiSSG. MI Student Aid will also share effective outreach strategies and approaches to supporting students from special populations. Additionally, participants will walk away with resources they can use to help students explore financial aid opportunities and various pathways to postsecondary education.



**Presentation:** Veteran Resource Centers on Campus

**Location:** Arlberg 2

**Presenter:** *Tammy Alvaro*

**Organization:** *Mid Michigan College*

**Audience:** Secondary and Post-Secondary

**Overview:** Learn about the Veteran Resource Centers at Mid Michigan College and how they help veterans and military-connected students. These spaces help with student success offering space to gather and connect to available resources. Each center features several computers with CAC card readers, lounges with big-screen TVs and gaming consoles, refreshments, and quiet study spaces.

**Presentation: Career Development for CTE Michigan Students**

**Location:** Arlberg 1

**Presenter:** *Dena Greene and Christopher Ferrell*

**Organization:** *Wayne Regional Educational Services Agency*

**Audience:** Secondary

**Overview:** Look at the newly revised edition of the Michigan Career Development Model (MCDM) which has been expanded to provide meaningful career development for all students with updated targets and strategies for early childhood, elementary, middle school, high school, and post-secondary. Explore the new resources including a new website, reference guide, graphics and icons, district wide strategies for embedding across the curriculum and metrics for measuring success. Help CTE students see the possibilities for their future because they can't be what they can't see!



**Presentation: Do you know YOUR Value?**

**Location:** Arlberg 3

**Presenter:** *Shari Hawken*

**Organization:** *Tuscola Technology Center*

**Audience:** Secondary and Post-Secondary

**Overview:** As the backbone of student services, support staff play a critical role in ensuring student success—but often face unique challenges, shifting responsibilities, and evolving expectations with limited space to connect and reflect.

In this collaborative session, secondary and postsecondary support professionals—academic advisors, administrative staff, counselors, registrars, career coaches, and others—will come together to share experiences, raise pressing questions, and explore strategies for navigating their roles with clarity, confidence, and care. Together, we'll unpack common concerns such as:

- Balancing administrative tasks with student-centered support
- Navigating institutional change, leadership shifts, and policy updates
- Addressing burnout and advocating for boundaries and well-being
- Creating equitable support systems for increasingly diverse student populations
- Bridging the communication gap between departments, schools, and systems

Through open discussion, breakout dialogues, and peer problem-solving, participants will leave with new insights, practical takeaways, and a stronger network of colleagues facing similar realities in different settings.



*The Michigan Occupational Special Populations Association is committed to providing equal access to all persons in admission, access, or operation of programs and services at secondary and post-secondary level.*

**Friday, May 3, 2024**  
**Concurrent Breakout Sessions IV**  
**9:15 a.m. - 10:30 p.m.**

**Presentation:** State of Michigan Perkins Postsecondary Update and Local Best Practices

**Location:** Matterhorn C

**Presenter:** *Virginia Zimmerman and Neco Jackson*

**Organization:** *Michigan Dept. of Labor and Economic Opportunity (LEO)*

**Audience:** Post-Secondary

**Overview:** This presentation will offer an exploration of key elements of Perkins V, highlighting how educational institutions can strategically access and leverage Perkins funding to strengthen Career and Technical Education (CTE) Programs of Study. The session will help to identify effective strategies for better serving post-secondary Special Populations within CTE programs. Participants will engage with tools such as the Perkins V legislative requirements, LEO-WD guidance materials, best practices, and models to inspire meaningful discussions and discoveries. This session aims to create a collaborative space where participants can share actionable insights and develop solutions to enhance support for students.



**Presentation:** Navigating Work-Based Learning: Rules, Best Practices, and YRA

**Location:** Arlberg 1

**Presenter:** *Candace Vinson*

**Organization:** *Michigan Department of Education -- Office of CTE Education*

**Audience:** Secondary

**Overview:** Join the Michigan Department of Education (MDE) for an in-depth session on Work-Based Learning (WBL) rules, compliance, and best practices to ensure successful and meaningful student experiences. This session will provide educators, workforce partners, and employers with critical updates on WBL regulations, documentation requirements, and strategies for maximizing student learning outcomes.

Additionally, we will explore the Youth Registered Apprenticeship (YRA) model, highlighting how it aligns with WBL to create structured, high-quality career pathways for students. Attendees will gain insights into program design, employer engagement, and the benefits of YRA for students and industry partners. Whether you are new to WBL or looking to enhance existing programs, this session will equip you with the knowledge and tools needed to navigate the landscape effectively.



*The Michigan Occupational Special Populations Association is committed to providing equal access to all persons in admission, access, or operation of programs and services at secondary and post-secondary level.*



**Audience:** Secondary and Post-Secondary



This image shows a single sheet of white paper with horizontal blue ruling lines. The lines are evenly spaced and run across the width of the page. There are no margins, text, or other markings on the paper.

## 2025 MOSPA STATE AWARD RECIPIENTS

### SECONDARY



**Professional Category**  
**Chef Robert Zehnder**  
Tuscola Technology Center



**Support Staff**  
**Terri West**  
Lapeer Education & Technology Center



**SPOP Student**  
**Bryce Ball**  
Tuscola Technology Center

### POST SECONDARY



**Professional**  
**Yvonne Creamer**  
Lansing Community College



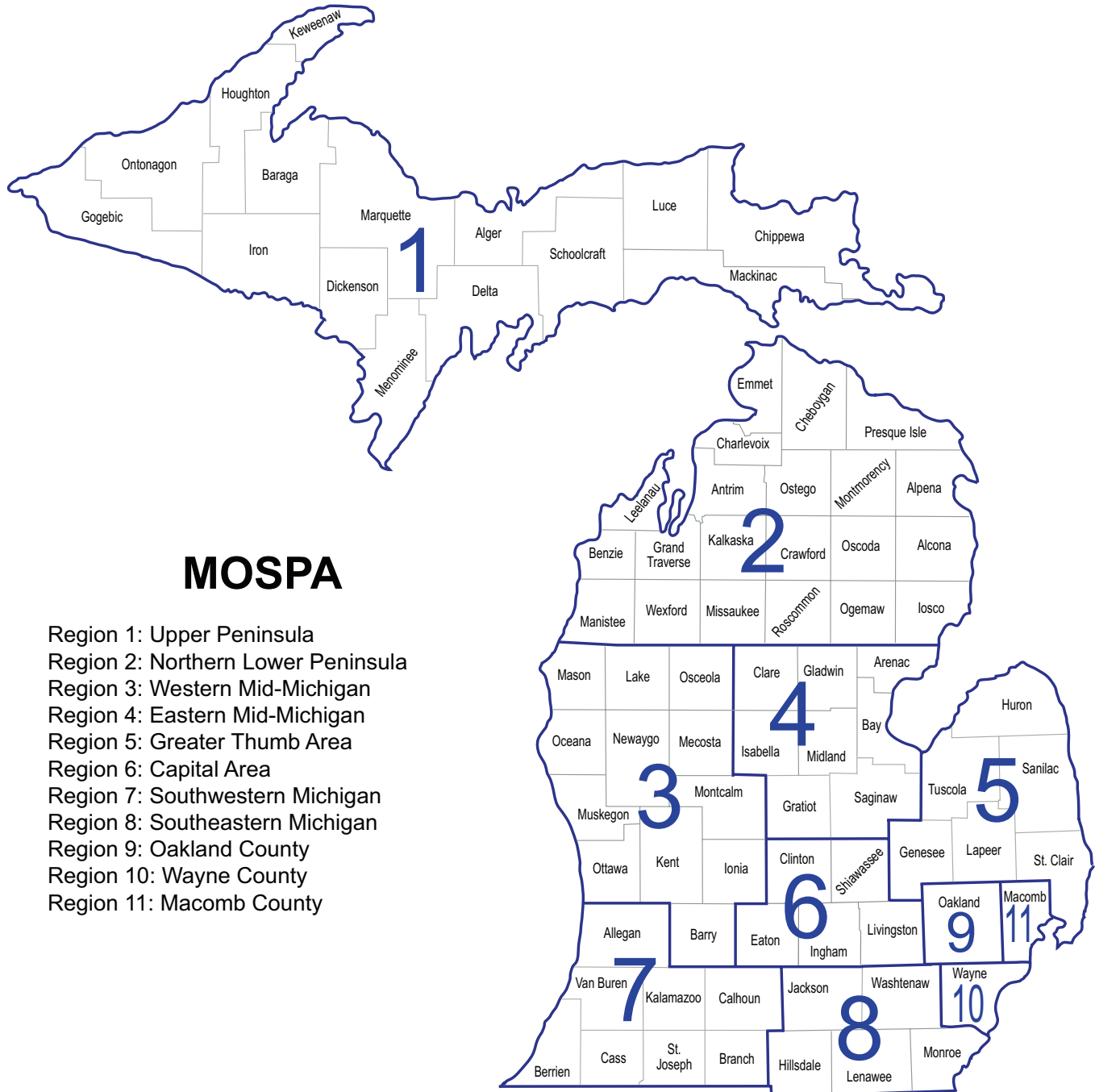
**SPOP Student**  
**Emma Herrington**  
Northwestern Michigan College



**Dr. Amy Dykhous**  
Mid Michigan College

### MICHELLE GLENN AWARD

## MOSPA REGIONS



*The Michigan Occupational Special Populations Association is committed to providing equal access to all persons in admission, access, or operation of programs and services at secondary and post-secondary level.*



# Thank You

**Department of Labor & Economic Opportunity,  
Workforce Development Agency,  
Jackson College, Edge,  
and Muskegon Community College**  
**for the generous and continued  
support of MOSPA and this conference!**



MICHIGAN DEPARTMENT OF  
LABOR & ECONOMIC  
OPPORTUNITY



WORKFORCE  
DEVELOPMENT

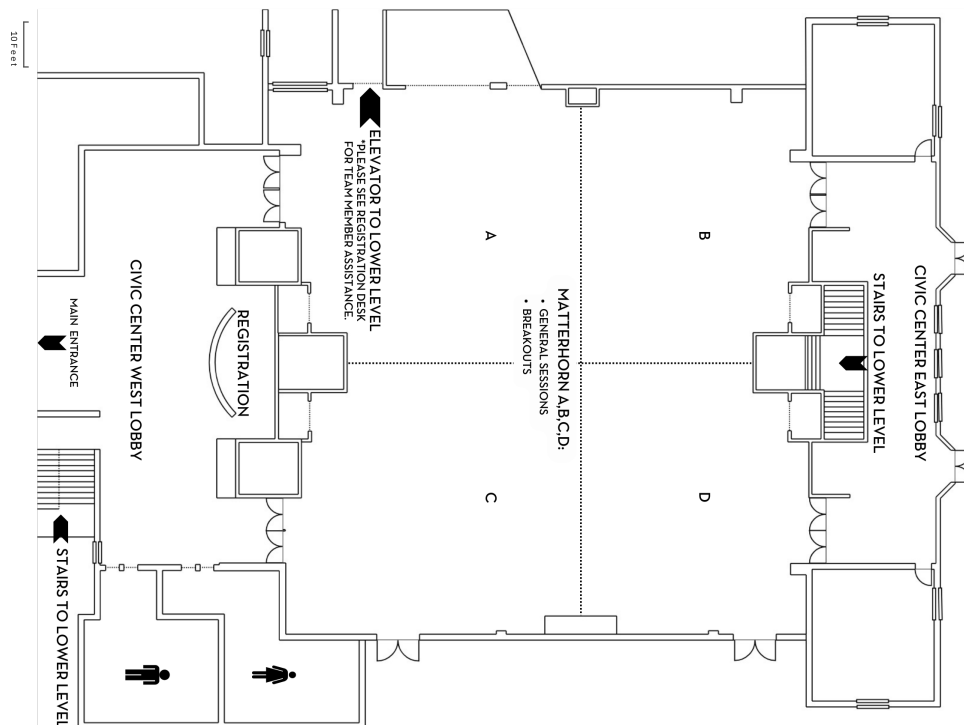


**EDGE**

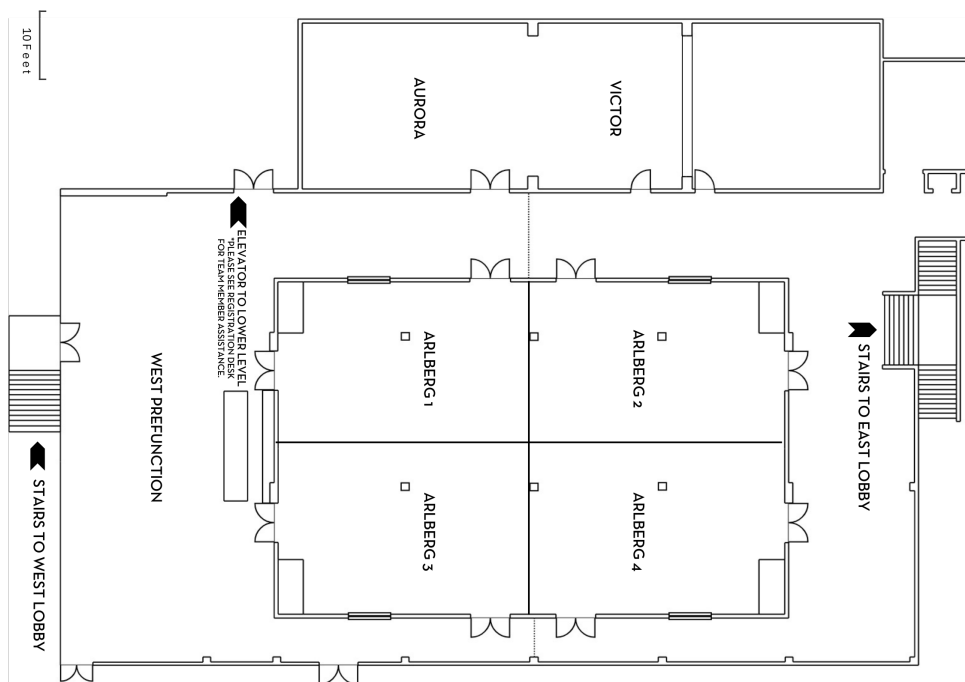


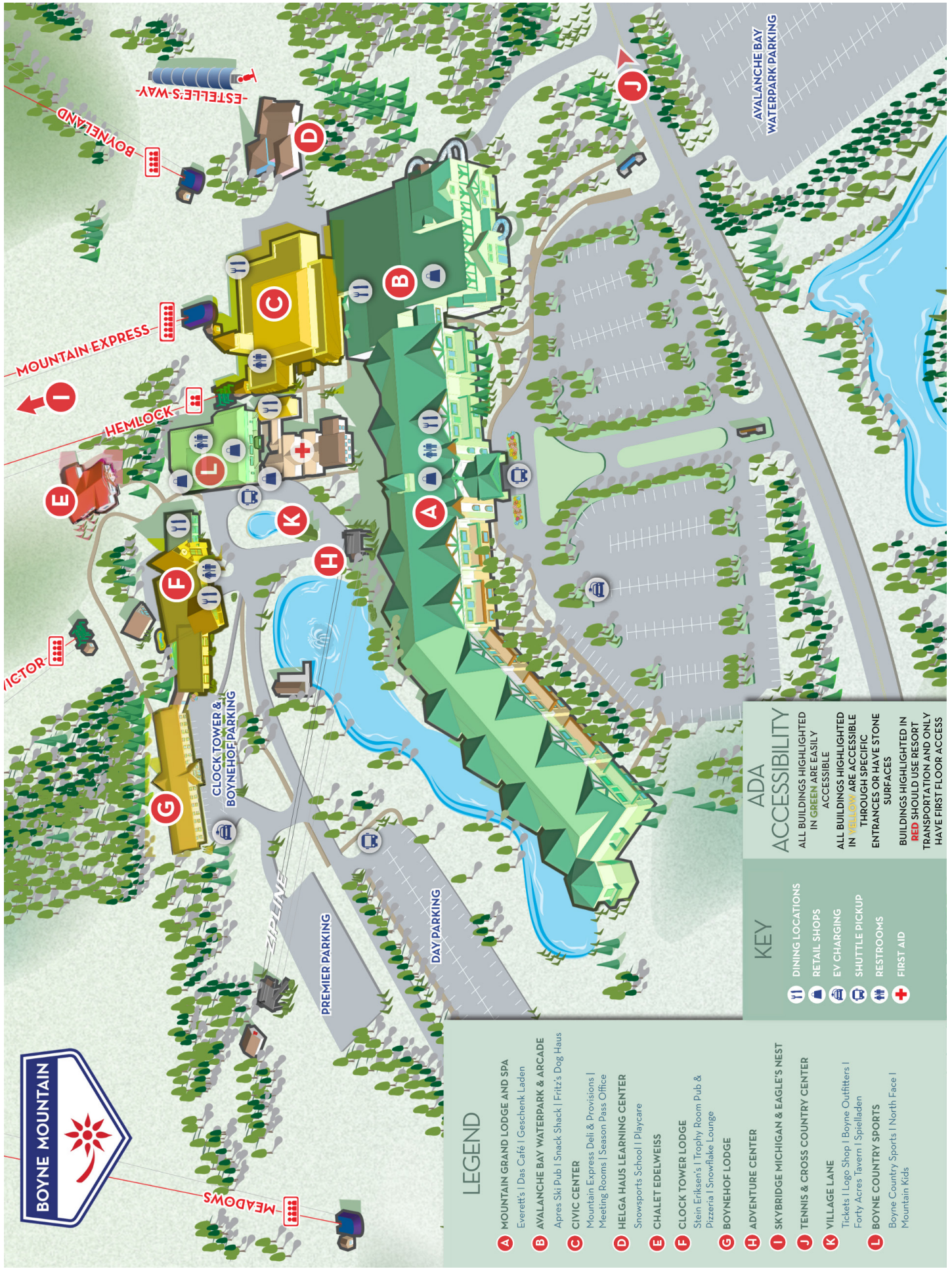
## Boyne Mountain Resort Civic Center

### Upper Level



### Lower Level





## LEGEND

- A** MOUNTAIN GRAND LODGE AND SPA  
Everett's | Das Café | Geschenck Laden
- B** AVALANCHE BAY WATERPARK & ARCADE  
Après Ski Pub | Snack Shack | Fritz's Dog Haus
- C** CIVIC CENTER  
Mountain Express Deli & Provisions | Meeting Rooms | Season Pass Office
- D** HELGA HAUS LEARNING CENTER  
Snowsports School | Playcare
- E** CHALET EDELWEISS
- F** CLOCK TOWER LODGE  
Stein Erksen's | Trophy Room Pub & Pizzeria | Snowflake Lounge
- G** BOYNEHOF LODGE
- H** ADVENTURE CENTER
- I** SKYBRIDGE MICHIGAN & EAGLE'S NEST
- J** TENNIS & CROSS COUNTRY CENTER
- K** VILLAGE LANE  
Tickets | Logo Shop | Boyne Outfitters | Forty Acres Tavern | Spielladen
- L** BOYNE COUNTRY SPORTS  
Boyne Country Sports | North Face | Mountain Kids

## KEY

- DINING LOCATIONS
- RETAIL SHOPS
- EV CHARGING
- SHUTTLE PICKUP
- RESTROOMS
- FIRST AID

## ADA ACCESSIBILITY

ALL BUILDINGS HIGHLIGHTED IN GREEN ARE EASILY ACCESSIBLE

ALL BUILDINGS HIGHLIGHTED IN **YELLOW** ARE ACCESSIBLE THROUGH SPECIFIC ENTRANCES OR HAVE STONE SURFACES

BUILDINGS HIGHLIGHTED IN **RED** SHOULD USE RESORT TRANSPORTATION AND ONLY HAVE FIRST FLOOR ACCESS





*As we celebrate the 50th Annual MOSPA Conference, we extend our deepest thanks to each of you — educators, advocates, and champions of special populations in Career and Technical Education. Your unwavering commitment over the past five decades has transformed countless lives and communities across Michigan. This milestone is a testament to the collective efforts of our dedicated members, past and present. Your passion and perseverance have shaped MOSPA's legacy, and we are honored to continue this journey together. Thank you for being an integral part of our history and our future.*

*The Michigan Occupational Special Populations Association is committed to providing equal access to all persons in admission, access, or operation of programs and services at secondary and post-secondary level.*