

The logo for SIS Manufacturing. It features a stylized icon on the left consisting of a red and yellow shape resembling a hot metal pour or a furnace opening. To the right of the icon, the letters "SIS" are written in a large, bold, black sans-serif font. Below "SIS", the word "MANUFACTURING" is written in a smaller, black, all-caps sans-serif font with wide letter spacing.

**SIS**  
MANUFACTURING



W W F S H A P E S

Innovation. Done. Right.

# Our Certifications



# SIS

MANUFACTURING

WWF SHAPES

Call today 705.759.5148  
info@sisgroup.ca

At SIS Manufacturing, we strive to acquire and maintain the best certifications possible. These include:



Canadian Welding Bureau, a Certification and Registration Organization for companies involved in the welding of steel structures



ISO 9001:2008 - Quality management systems standards that are designed to help organizations ensure they meet the needs of customers while meeting statutory and regulatory requirements related to a product



OHSAS 1800:2007 - Internationally applied Standard for occupational health and safety management systems



Partners in Protection (PIP) is a cooperative program between private industry and the CBSA (Canada Border Services Agency) aimed at enhancing border and trade chain security.



The Technical Standards and Safety Authority (TSSA) administers and enforces technical standards in the province of Ontario in Canada

Innovation. Done. Right.



# SIS

MANUFACTURING

# Welded Wide Flange Beams



**WWF SHAPES**

Call today 705.759.5148  
info@sisgroup.ca



## *Your advantage for steel fabrication*

**We provide full service, from symmetrical structural sections, to large complex assemblies & weldments.**

SIS Manufacturing produces high quality steel beams to the strictest dimensional requirements in a variety of grades. With one of the most sophisticated plate mills in North America at our back door, SIS Manufacturing is capable of acquiring rolled plate up to 75mm (3") in thickness, and up to 3850mm (152") wide.

Coupled with our state-of-the-art welding gantrys, high speed CNC plasma and flame cutting machines, and technical support in application design, SIS Manufacturing provides our customers the competitive edge.



### **PRODUCTS**

- Symmetrical structural sections (WWF)
- Unsymmetrical sections (WRF)
- Welded Special Sections (WSS)
- Custom Sections
- Box Sections

*SIS Manufacturing offers advanced CNC plasma cutting, flame cutting, robotic welding & commercial shot blasting.*

Our technical and commercial representatives can provide you with more detailed information on our welded shapes and assist with design application issues.



**PLEASE INQUIRE FOR SIZES**

**Innovation. Done. Right.**



# Plasma & Oxy-Fuel Cutting



WWF SHAPES

Call today 705.759.5148  
info@sisgroup.ca

Our in-house plasma & oxy-fuel cutting capabilities feature multiple cutting tables.



AKS Dura-Kut G1050 Gantry Cutting System features:

- 15' x 110' bed capacity, up to 2" thickness
- Robo-kut plasma beveling head
- Our Hypertherm Phoenix CNC controller utilizes ProNest software for efficient use of material resulting in less waste & cost to the end user

AKS Dura-Kut G1050 plasma/oxy fuel Gantry Cutting System features:

- 12' x 84' bed capacity
- Two torch oxy-fuel system for synchronized parallel cutting up to 6" thick
- plasma cut up to 3" thickness
- Our Hypertherm Phoenix CNC controller utilizes ProNest software for efficient use of material resulting in less waste & cost to the end user



Innovation. Done. Right.



# Custom Bridge Sections



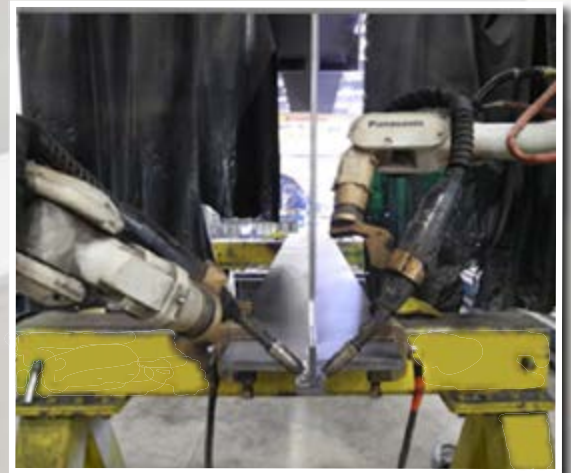
**WWF SHAPES**

Call today 705.759.5148  
info@sisgroup.ca



Customer: Walters Inc.

- 96' length spliced bridge girders
- 63" high
- 2" flange
- 5/8" web
- 7/16" weld
- Material grade CSA G40.21 350WT CAT3 FC
- Testing - 100% MPI fillets  
- 100% UT splices



Custom bridge floor beams, Peace Bridge project  
Walters Inc.

- 5/8" Weld
- 1" Flange
- 48" High
- Material grade CSA G40.21 350WT CAT3 FC

Innovation. Done. Right.



# Robotic Welding



WWF SHAPES

Call today 705.759.5148  
info@sisgroup.ca

SIS Manufacturing has added a dual head robotic welding system to our line-up. Equipped with two Panasonic TA1400 robots, this new addition will provide improved quality, efficiency and consistency for our customer's welded components. Coupled with our custom gantry and turning fixtures, this welding solution is certain to satisfy our customer's requirements.



Our high-speed welding robots increase productivity and achieve maximum welding performance.



Innovation. Done. Right.



# Welded Box Beams, Z-Beams



# SIS

MANUFACTURING

WWF SHAPES

Call today 705.759.5148

info@sisgroup.ca



Customer: Walters Inc.  
Straight Box, Curved Box, Z - Beams

- Lengths up to 50'
- Plate 3/8" to 1-3/8"
- From 11"x11" to 25"x25"
- Max camber 28"
- Material: ASTM A572 Gr50

Innovation. Done. Right.



# SIS

MANUFACTURING

# Welded Cambered Beams



WWF SHAPES

Call today 705.759.5148  
info@sisgroup.ca



- Customer: Northwest  
Cambered pedestrian bridge beams
- 945" Length
  - 1" Flange
  - 5/8" Web
  - 22" Camber
  - Plasma cut
  - Robotic weld
  - Material: CSA G40.21 350A



Innovation. Done. Right.



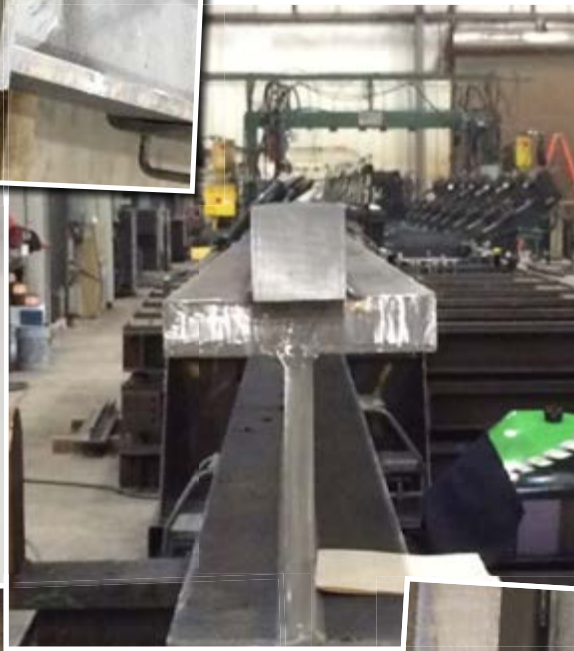


# Welded Kish Beams & Buckstay Beams



WWF SHAPES

Call today 705.759.5148  
info@sisgroup.ca



Customer: Essar Steel

- 1-1/4" Web
- 2-3/4" Flange
- 4" sq. Billet welded to top flange
- Full pen. weld
- Robotic weld
- Material: CSA G40.21 50W



Innovation. Done. Right.



# Welded Locomotive Frame Components



WWF SHAPES

Call today 705.759.5148  
info@sisgroup.ca



Customer: Electro Motive Diesel

- 21 Meter length
- 10 Piece spliced flanges 20mm to 60mm thick
- 4 Piece spliced web 10mm to 24mm thick
- Plasma cut
- Robotic weld
- Precision detail and drill
- Shot blast
- Testing - 100% MPI Fillets  
- 100% UT Splices



Customer: Electro Motive Diesel

- Tier IV locomotive bed plate
- 83' length
- 7 piece spliced
- Testing - 100% UT Splices



Innovation. Done. Right.



# Welded Crane Girders



WWF SHAPES

Call today 705.759.5148  
info@sisgroup.ca



Customer: Sudbury Integrated Nickel

- 2-1/2" Flange thickness
- 1" Web thickness
- Full pen. weld
- Plasma cut
- Robotic welded
- Precision detail & drill
- Ultrasonic Tested
- Shot blast
- Paint



Innovation. Done. Right.



# Shipping Options



WWF SHAPES

Call today 705.759.5148

[info@sisgroup.ca](mailto:info@sisgroup.ca)



- Ship by rail
- Ship by truck



Innovation. Done. Right.

