

The World's First Water Based Self-Cleaning Surface Protectants

We Do Waterproofing

ABM - Bio Protection Solutions Inc.

ABM was founded in 2012 by a Swedish and American team of experts to develop and patent a self-cleaning, non-VOC (Volatile Organic Compound) technology for the concrete and masonry market, capable of repelling liquids and protecting substrates' structural integrity.

ABM's technology allows concrete and masonry to last longer by protecting substrates from the inside out. Meaning, harmful elements such as water, chloride ion and alkali silica will no be able to penetrate nor corrode the substrate and rebar.

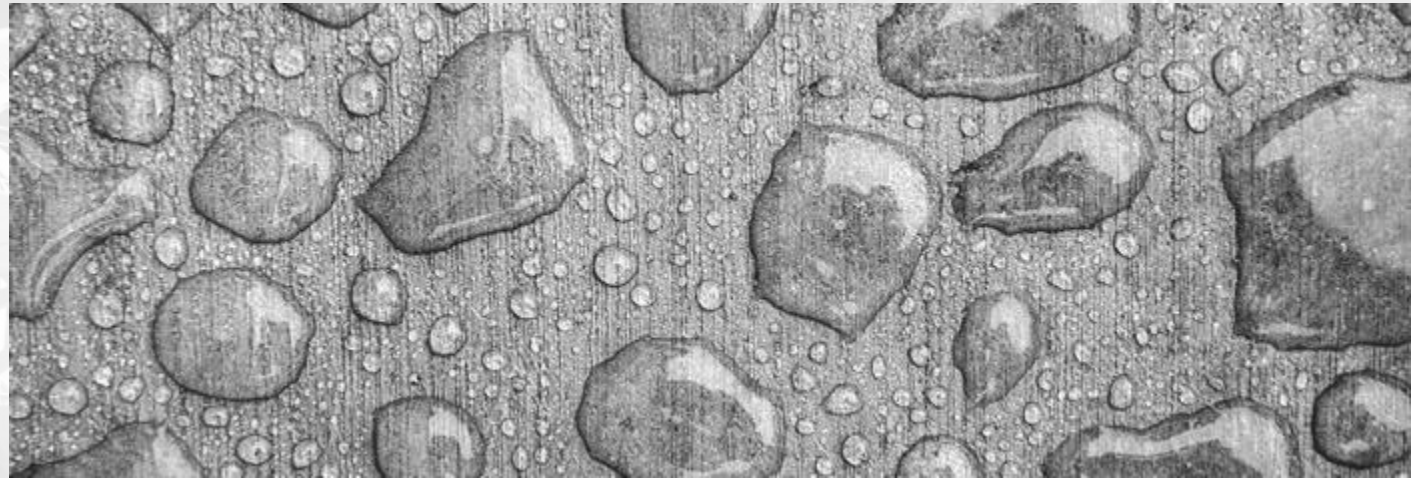


How Do ABM Sealants Protect Your Property?

The Solution

With just a single spray or roll-on application, ABM solutions are engineered to provide the first self-cleaning, Non-Volatile Organic Compound (VOC), chemical resistant and waterproof protection against petroleum, deicing salts and repeated freeze and thaw cycles.

ABM solutions will not alter the color or appearance of the applied substrate as it is water-based, Non-VOC and environmentally friendly. Exposure to our solutions is safe for humans, animals and all vegetation.



How Do ABM Sealants Protect Your Property?

The Process

ABM's product formulations provide three active processes for all-weather concrete and masonry substrate protection; Hydroscopic, Hydrophilic and Hydrophobic.

Hydroscopic and Hydrophilic crystals penetrate deep into pores and microscopic cracks to seek out moisture. Under the influence of constant hydrostatic pressure, the crystallization process continues to fill-in gaps and block the migration of moisture. Upon contact, the crystals expand to trap the moisture and allow the evaporation process to start.

The Hydrophobic process creates a non-slip repellent layer that prevents moisture from penetrating into the substrate.



Concrete Cross-Section: Water and chemicals seep into concrete pores and capillaries causing cracks and corrosion.



Concrete Cross-Section: ABM products penetrate deep into concrete pores and capillaries preventing cracks and corrosion.

How Do ABM Sealants Protect Your Property?

The Applications

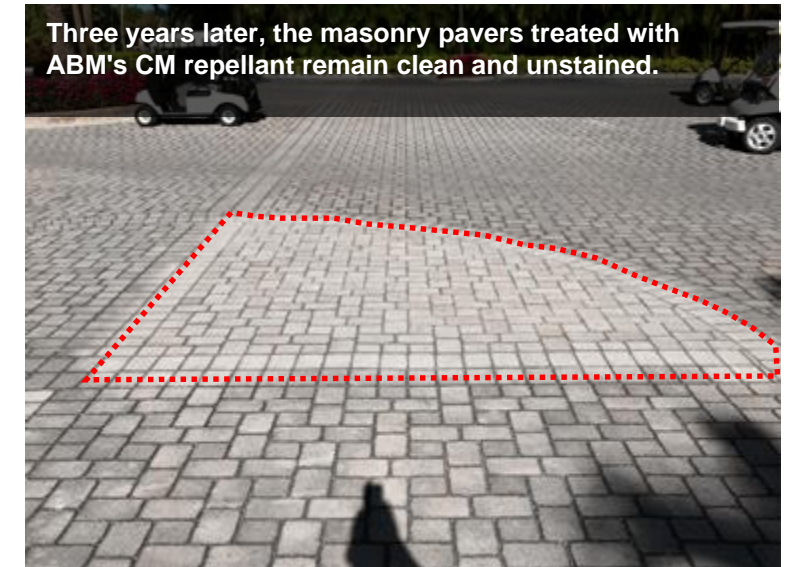
ABM products can be effectively applied to many different types of surfaces and environments in a multitude of settings, including: commercial, residential, industrial, retail, transportation and municipal sites.

- > Concrete Floors and Walls
- > Industrial Plants and Park
- > Foundations and Slabs
- > Swimming Pools and Fountains
- > Fuel Stops and Gas Stations
- > Roadway and Railway Tunnels
- > Staircases and Elevator Pits
- > Parking Lots and Garages
- > Driveways and Walkways
- > Bridges and Overpasses
- > Runways and Taxiways
- > Warehouse Flooring



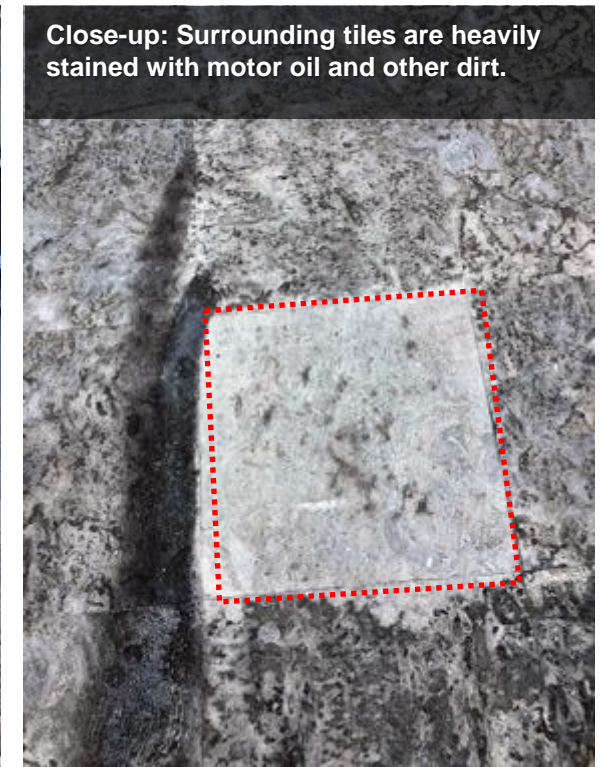
Application of ABM's C/M Onto Masonry Pavers

Since the application of the C/M cleaner and moisture repellant onto the test area three years ago, the product continues to protect the pavers while the surrounding untreated pavers degrade.



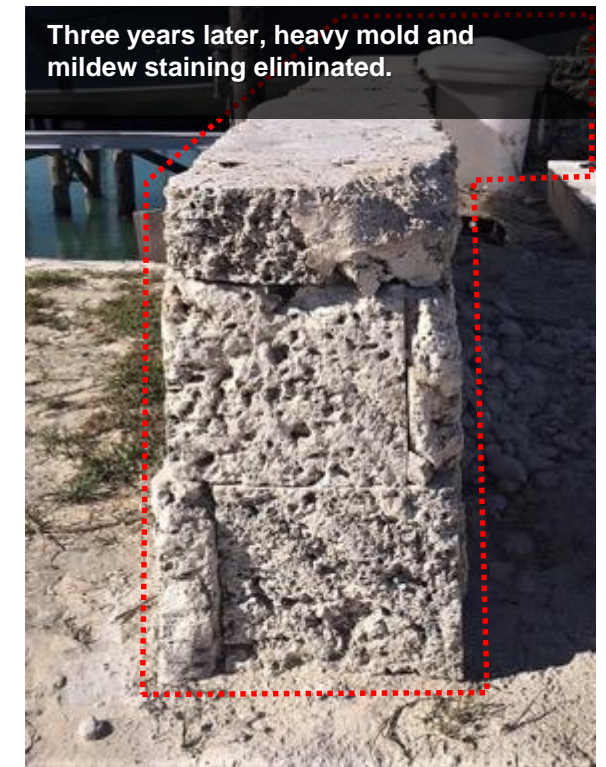
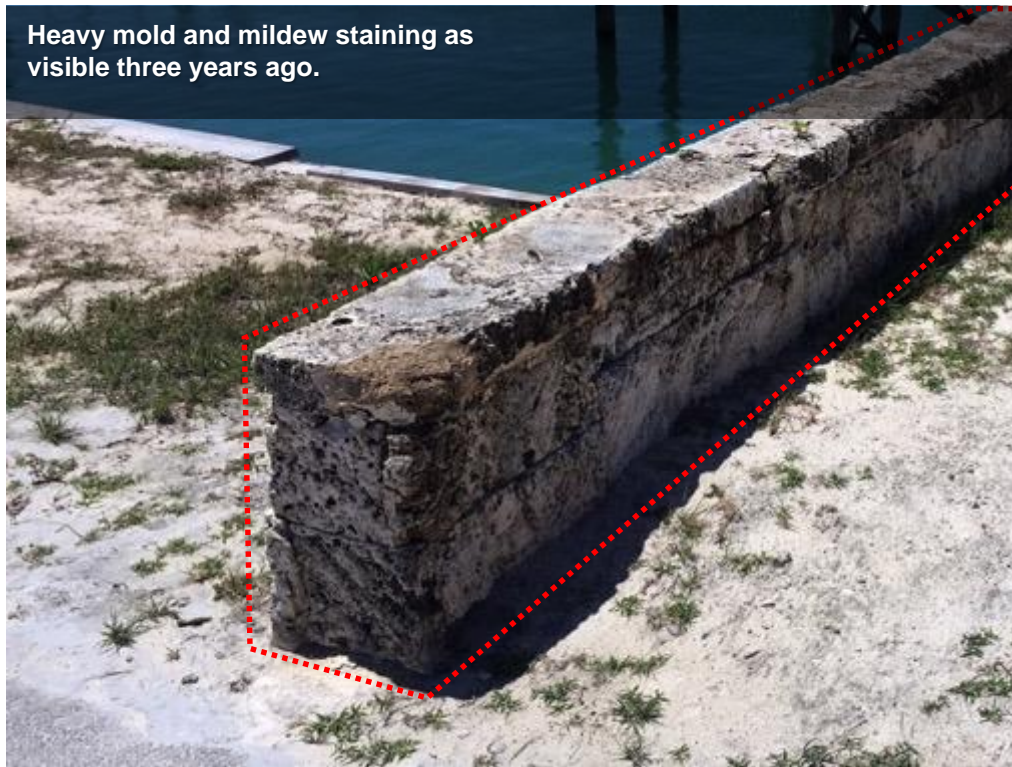
Application of ABM's C/M Product onto Coral Tiles

Since the application of the C/M cleaner and moisture repellant onto the test tile three years ago, the product continues to protect the coral tile while the surrounding untreated tiles became heavily stained.



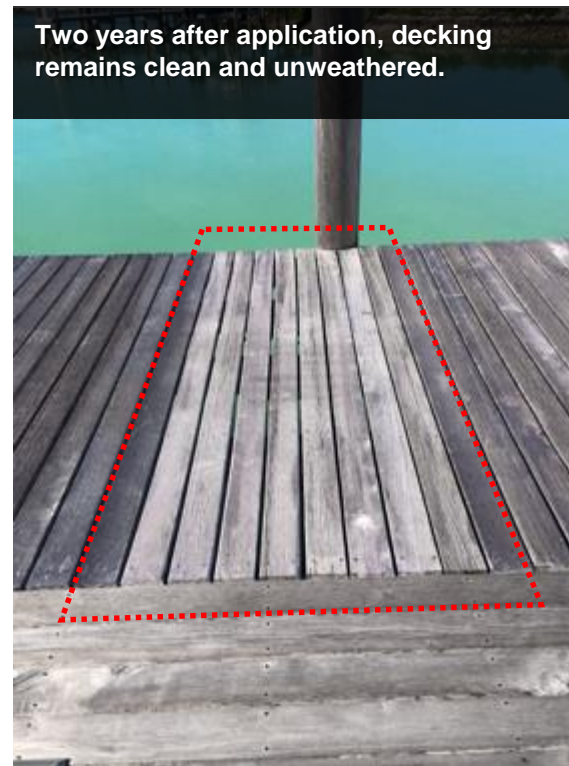
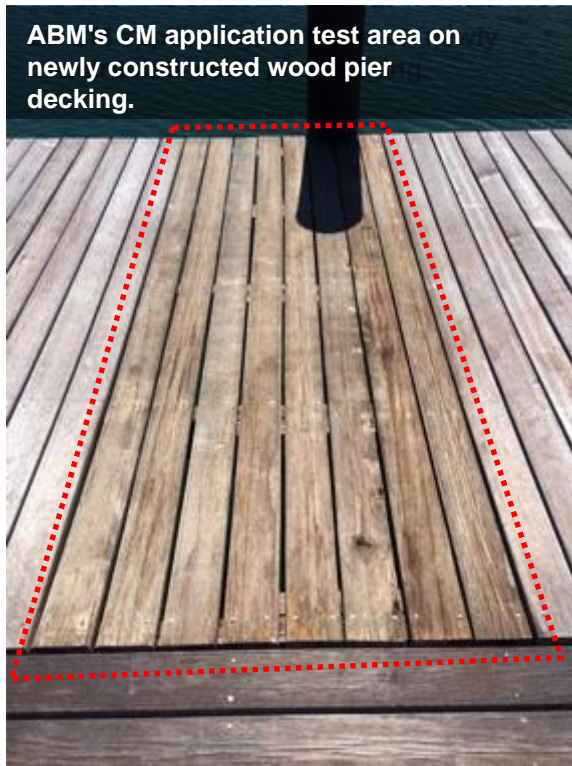
Application of ABM's C/M Product onto Coral Wall

Since the application of the C/M cleaner and moisture repellant onto the natural coral stone walls, heavy mold and mildew surface staining have been eliminated. The product now also protects the coral blocks from sea salt and weathering.



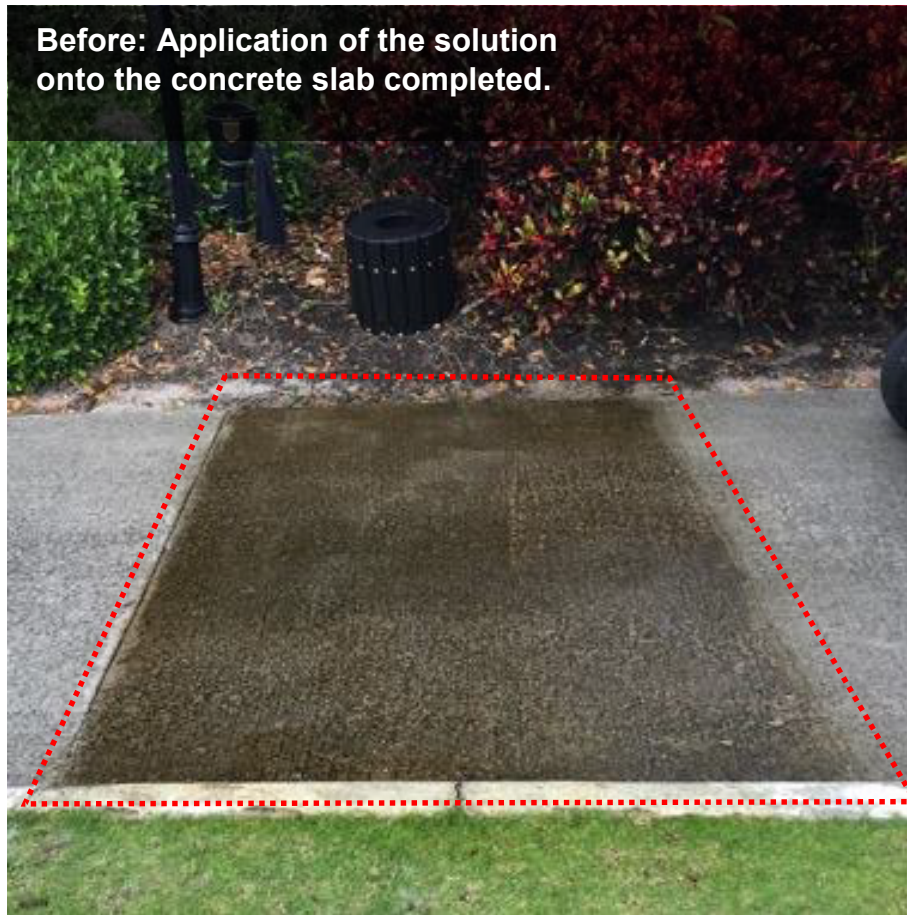
Application of ABM's C/M Onto Wood Pier Decking

Since the application of the C/M cleaner and moisture repellant onto the test section over two years ago, the product continues to protect the decking from mold, mildew, algae and salt while the surrounding untreated wood weathers and degrade.



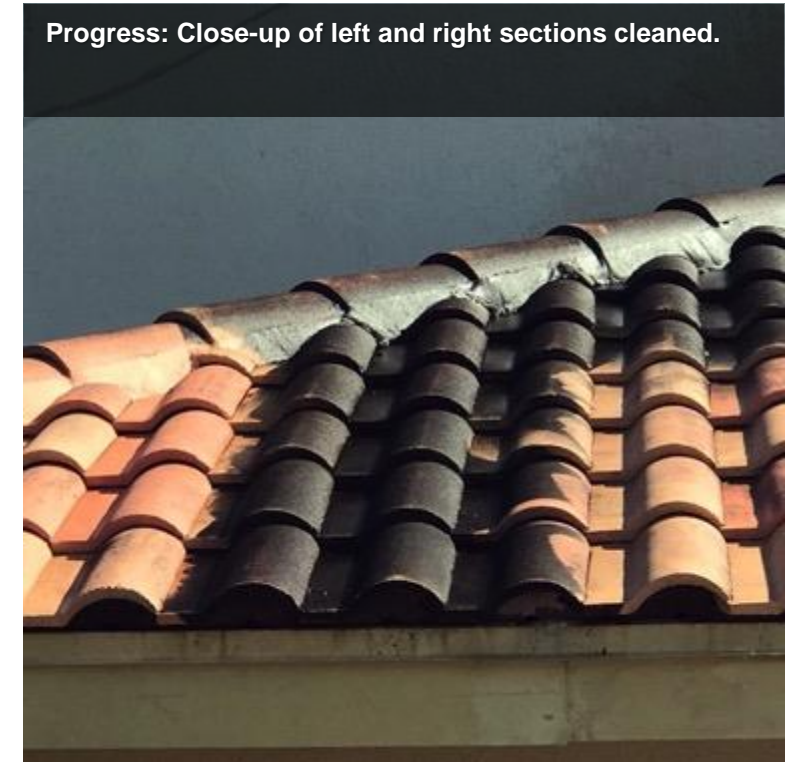
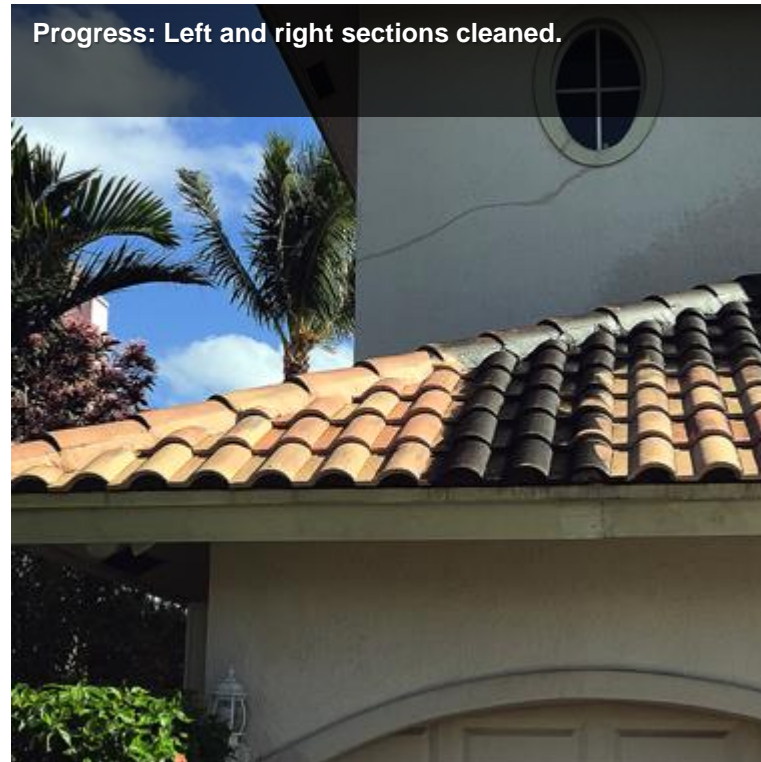
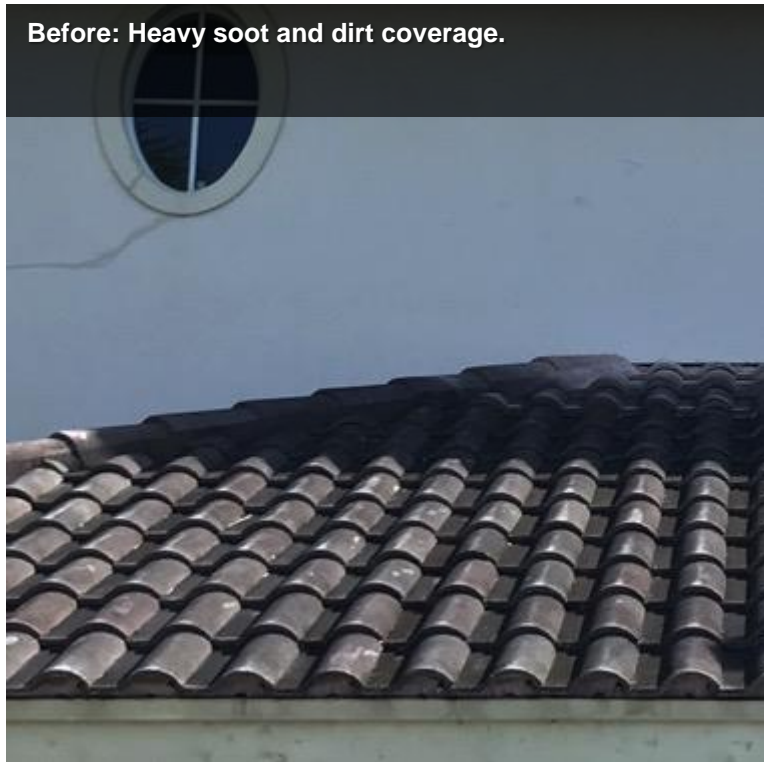
Application of ABM's C/M Onto Concrete Slab Walkway

Removal of mold mildew, grime and dirt stains from concrete slab walkway.



Application of ABM's C/M on Terracotta Roof Tiles

Removal of heavy accumulation and staining from soot, grime and dirt atop terracotta roof tiles of oceanfront house, eliminating the need for future pressure cleaning.



The Products



CM (Concrete and Masonry)

ABM's globally formulations provide three active processes for all-weather concrete and masonry substrate protection; **Hydroscopic, Hydrophilic and Hydrophobic.**

Hydroscopic and Hydrophilic crystals penetrate deep into pores and microscopic cracks to seek out moisture. Under the influence of constant hydrostatic pressure, the crystallization process continues to fill-in gaps and block the migration of moisture. Upon contact, the crystals expand to trap the moisture and allow the evaporation process to start.

The Hydrophobic process creates a non-slip moisture repellent layer that prevents moisture from penetrating into the substrate.

Advantages of Application

- > Self-Cleaning.
- > Long lasting internal waterproofing and moisture blocking.
- > Excellent surface repelling property preventing water, jet fuel and oil penetration.
- > Resists aggressive chemicals such as acid, jet fuel, oil and other caustic substances.
- > Protects reinforcing steel bars against corrosion.
- > Prevents penetration of chloride ions from deicing salts.
- > Eliminates damage by repeated freezing and thawing cycles.
- > Prevents concrete scaling.
- > Seals and protects with one application..

The Products



MV (Moisture and Vapor) Protectant

MV is a unique, water-based crystallization product specifically designed to block negative moisture and vapor in concrete and masonry structures. MV is designed to be applied to concrete substrates that have cured for at least 7 days.

Hydroscopic and Hydrophilic crystals penetrate deep into pores and microscopic cracks to seek out moisture. Under the influence of constant hydrostatic pressure, the crystallization process continues to fill-in gaps and block the migration of moisture. Upon contact, the crystals expand to trap the moisture and allow the evaporation process to start.

Advantages of Application

- > High moisture and vapor blocking performance.
- > Penetrates concrete sealing voids, capillaries and cracks up to 1/16th inch/1.5 mm.
- > Multiple functions: moisture blocking, and increasing the adhesion of coatings and paints.
- > Waterproofs the negative side of basement wall substrates.
- > Non-toxic.
- > Resists hydrostatic pressure.
- > Internal and external application.

ABM - Bio Protection Solutions Inc.

DELRAY BEACH, FL 33446

PH: +1-561-955-0444

WWW.ABMBPS.COM

Developed in Sweden. Made in the USA.

